



# Industry profile

## Victoria

Date of publishing: 15 April 2026

### Overview

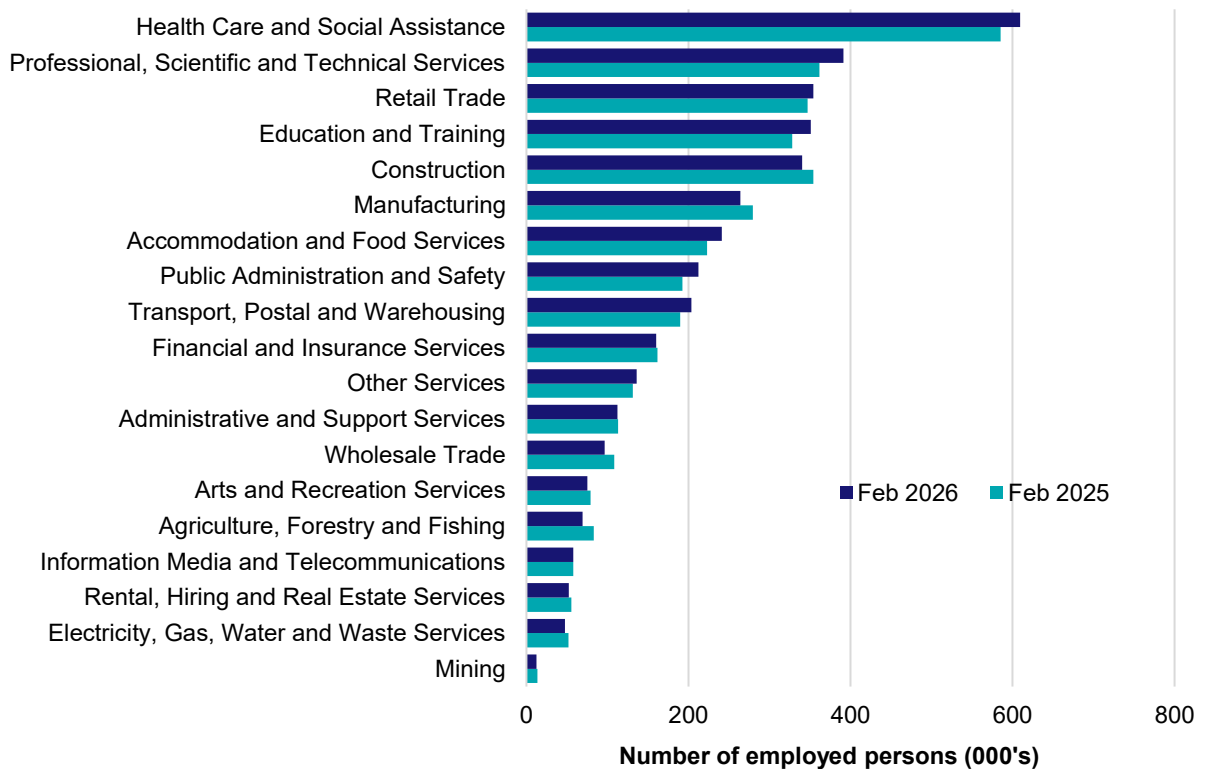
In February 2026, there were around 3,787,000 people employed in Victoria. The 5 largest employing industries in Victoria were Health Care and Social Assistance, Professional, Scientific and Technical Services, Retail Trade, Education and Training and Construction. Together these 5 industries accounted for 54% of all employment.

Over the year to February 2026, employment in:

- Health Care and Social Assistance rose by 4.1% to stand at 609,300
- Professional, Scientific and Technical Services rose by 8.2% to stand at 391,100
- Retail Trade rose by 2.1% to stand at 354,100.

In Health Care and Social Assistance in Victoria, 53% of workers were employed full-time; 76% were Female; and the median age of the workforce was 41. Around 76% of employed persons in this industry were located in Greater Melbourne.

### Employment by industry, February 2026 and February 2025

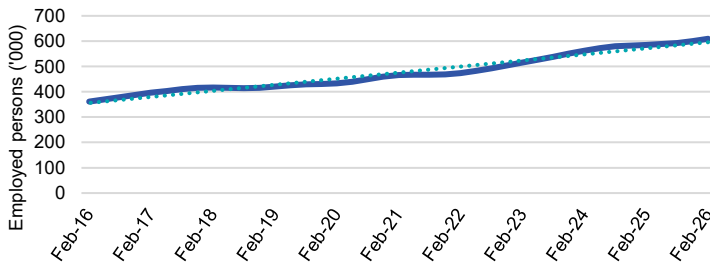


Source: ABS Labour Force Survey, Detailed, four quarter averages, February 2026. Note that total employment (four quarter averaged data) may not match data published in the Labour Market dashboards (6 month averaged data).

Note: For any enquiries related to the data in this report, contact [RegionalWorkforceAssessment@jobsandskills.gov.au](mailto:RegionalWorkforceAssessment@jobsandskills.gov.au)

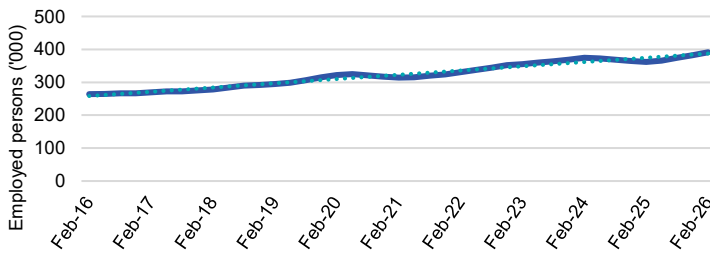
## Five largest employing industries: key statistics

### Health Care and Social Assistance



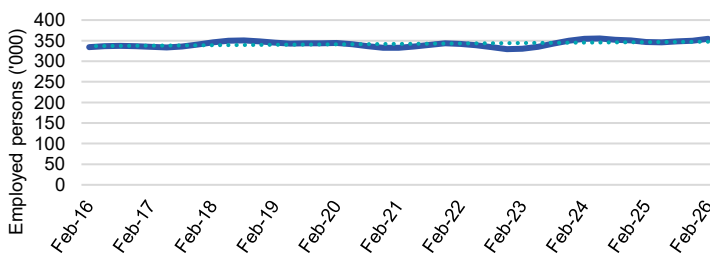
|                                 |         |
|---------------------------------|---------|
| Number employed (Feb-26):       | 609,300 |
| 1 year employment change:       | 4.1%    |
| 5 year employment change:       | 30.7%   |
| 10 year employment change:      | 68.6%   |
| Youth share of employment:      | 9.4%    |
| Mature age share of employment: | 16.9%   |

### Professional, Scientific and Technical Services



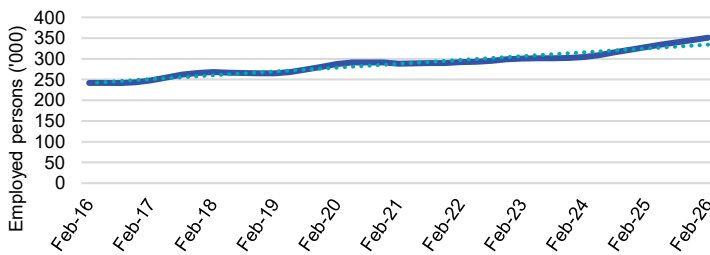
|                                 |         |
|---------------------------------|---------|
| Number employed (Feb-26):       | 391,100 |
| 1 year employment change:       | 8.2%    |
| 5 year employment change:       | 24.3%   |
| 10 year employment change:      | 48.1%   |
| Youth share of employment:      | 4.4%    |
| Mature age share of employment: | 7.7%    |

### Retail Trade



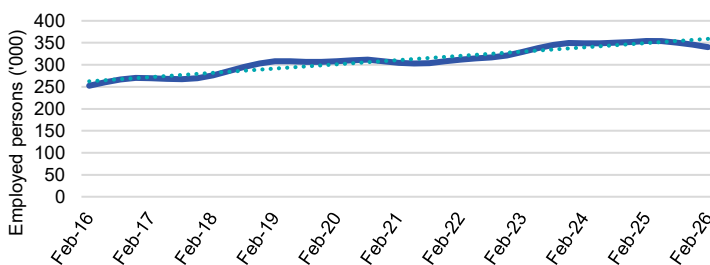
|                                 |         |
|---------------------------------|---------|
| Number employed (Feb-26):       | 354,100 |
| 1 year employment change:       | 2.1%    |
| 5 year employment change:       | 6.4%    |
| 10 year employment change:      | 6.0%    |
| Youth share of employment:      | 21.6%   |
| Mature age share of employment: | 7.8%    |

### Education and Training



|                                 |         |
|---------------------------------|---------|
| Number employed (Feb-26):       | 350,900 |
| 1 year employment change:       | 6.9%    |
| 5 year employment change:       | 21.8%   |
| 10 year employment change:      | 44.9%   |
| Youth share of employment:      | 5.8%    |
| Mature age share of employment: | 10.2%   |

### Construction



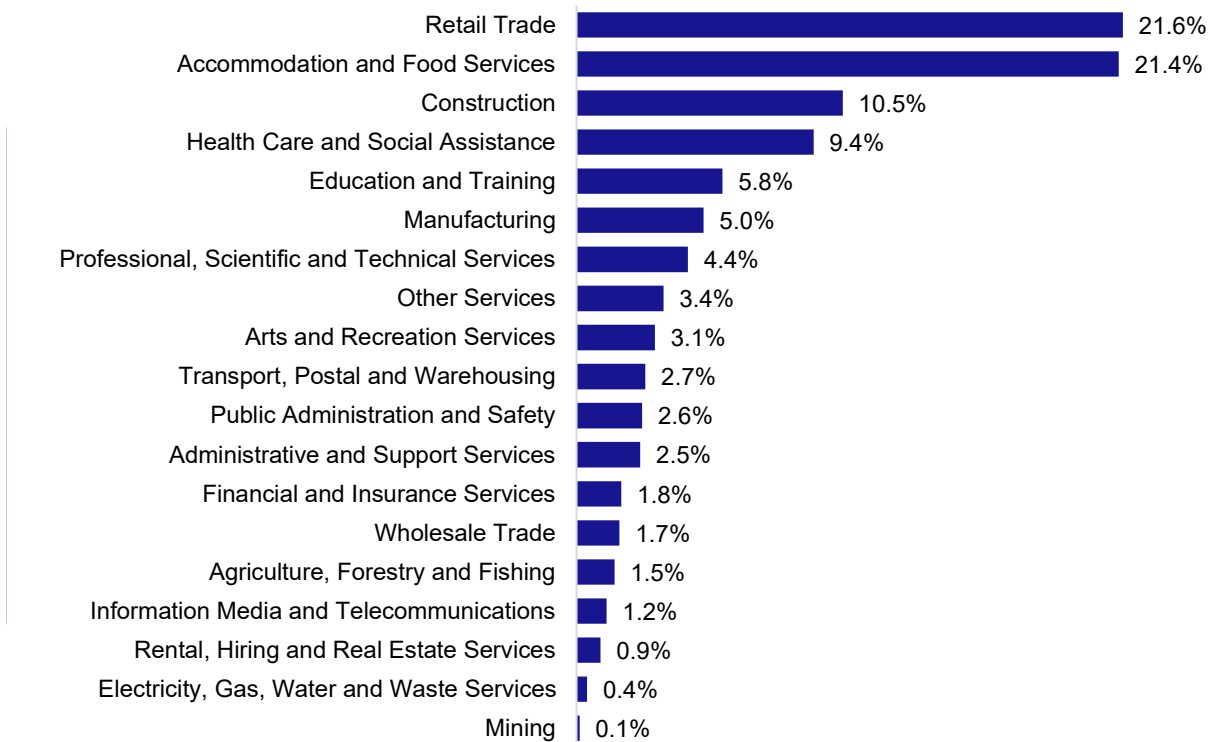
|                                 |         |
|---------------------------------|---------|
| Number employed (Feb-26):       | 340,400 |
| 1 year employment change:       | -3.9%   |
| 5 year employment change:       | 11.7%   |
| 10 year employment change:      | 34.9%   |
| Youth share of employment:      | 10.5%   |
| Mature age share of employment: | 8.1%    |

Source: ABS Labour Force Survey, Detailed, four quarter averages, February 2026, except youth and mature age data which are from the ABS Census of Population and Housing, 2021.

Note: In each chart, the solid line is the level of employment and the dotted line is a simple linear trend line for the 10 year period.

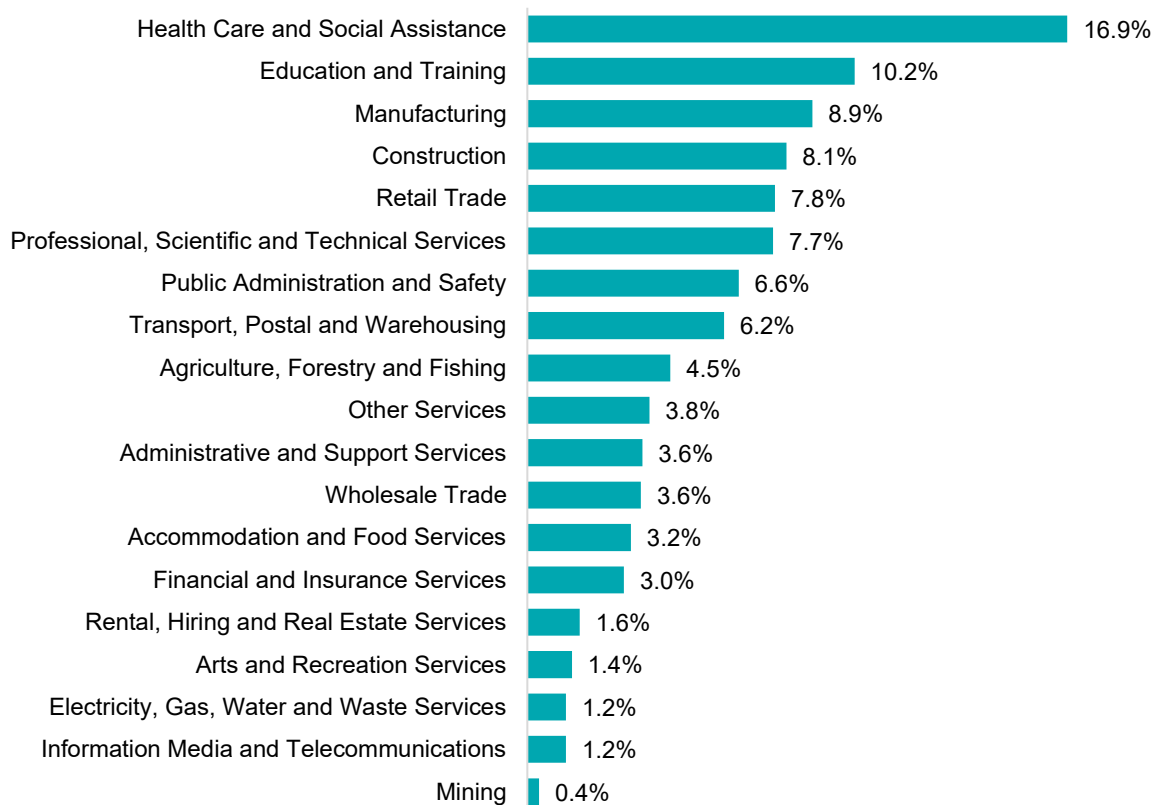
## Employment characteristics by Industry

### Which industries are youth (aged 15-24) employed in?



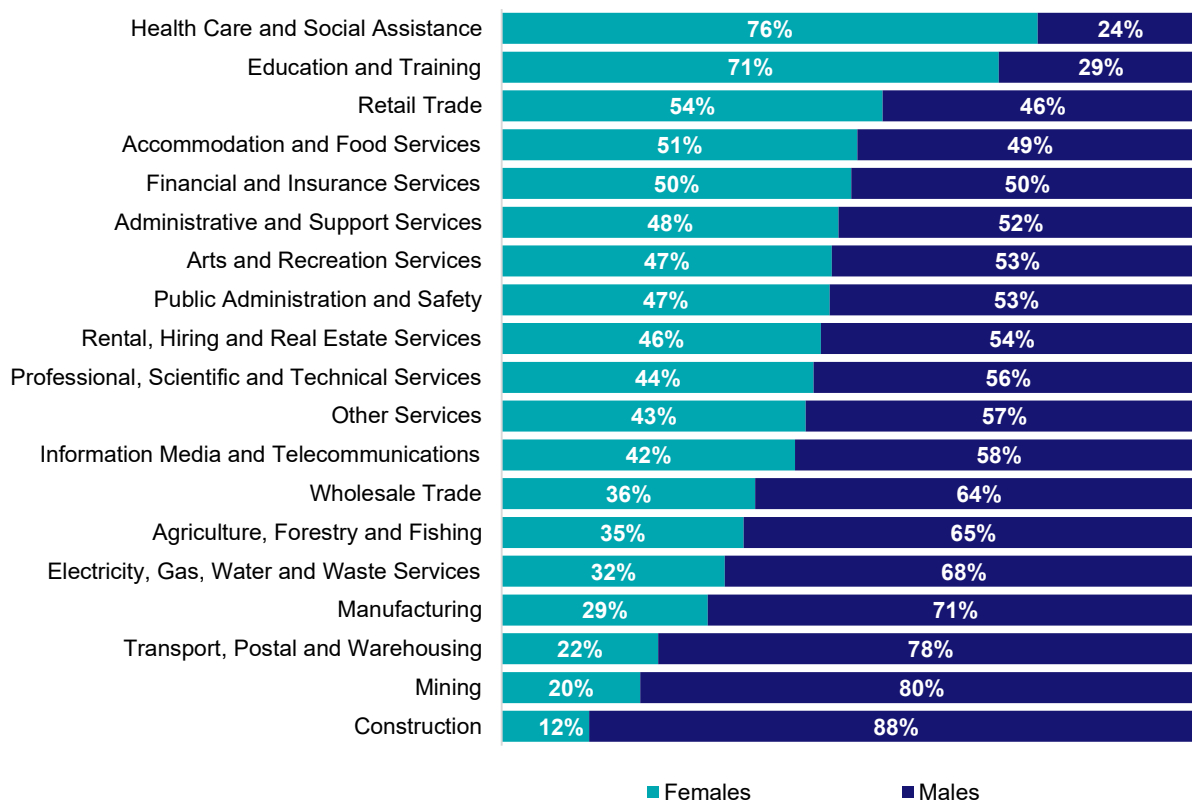
Source: ABS Census of Population and Housing, 2021.

### Which industries are mature age persons (aged 55+) employed in?



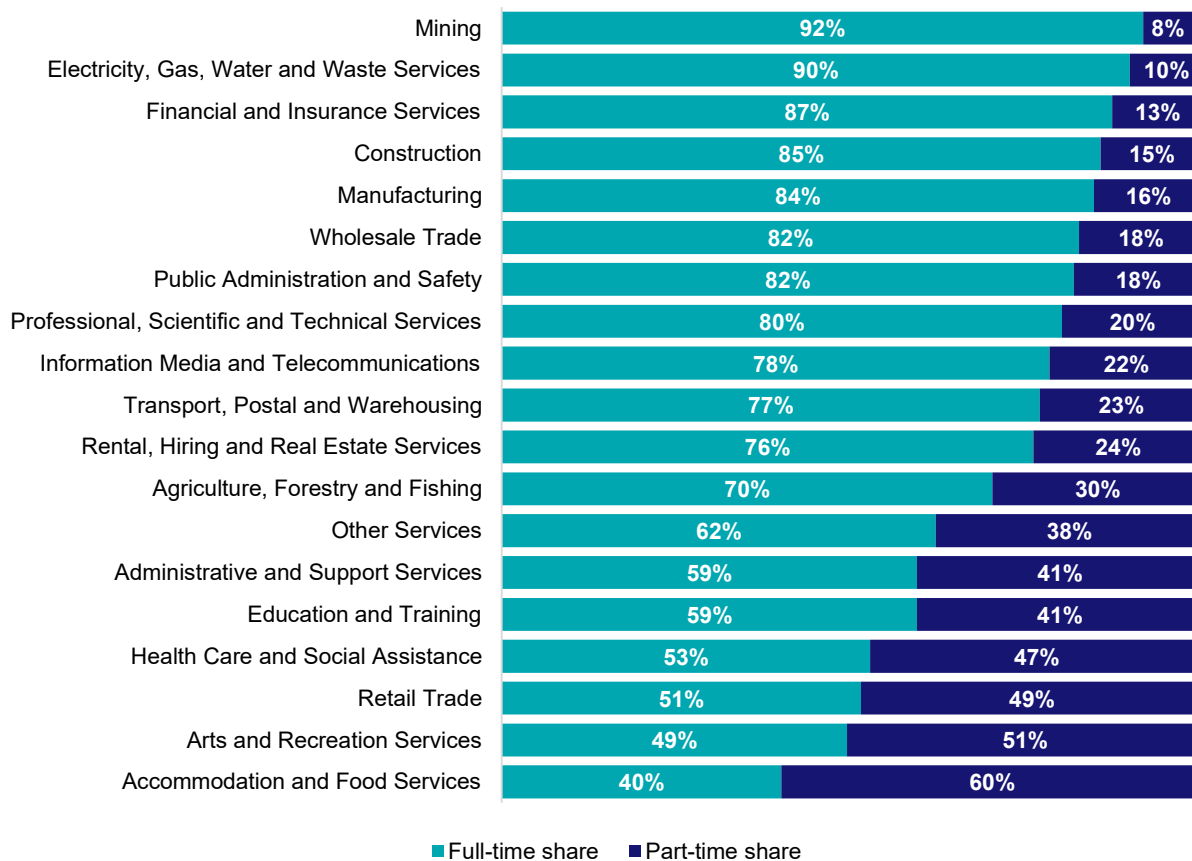
Source: ABS Census of Population and Housing, 2021.

## Gender share by industry



Source: ABS Labour Force Survey, Detailed, four quarter averages, February 2026.

## Full-time and part-time employment status by industry



Source: ABS Labour Force Survey, Detailed, four quarter averages, February 2026.

## Appendix

### Employment by industry, Victoria, February 2026

| Industry (in order of size)                     | Share of emp't Feb-26 (%) | Share of emp't in Greater Melbourne (%) | Share of emp't in Rest of VIC (%) | Employed ('000) |               |               | 1 year change |            | 5 year change |             | Median age * |
|---|---------------------------|---|-----------------------------------|-----------------|---------------|---------------|---------------|------------|---------------|-------------|--------------|
|   |                           |   |                                   | Feb-26          | Feb-25        | Feb-21        | ('000)        | %          | ('000)        | %           |              |
| Health Care and Social Assistance               | 16.1                      | 75.5                                    | 24.5                              | 609.3           | 585.1         | 466.4         | 24.2          | 4.1        | 143.0         | 30.7        | 41           |
| Professional, Scientific and Technical Services | 10.3                      | 89.5                                    | 10.5                              | 391.1           | 361.6         | 314.5         | 29.5          | 8.2        | 76.6          | 24.3        | 39           |
| Retail Trade                                    | 9.4                       | 77.8                                    | 22.2                              | 354.1           | 346.8         | 332.9         | 7.3           | 2.1        | 21.2          | 6.4         | 34           |
| Education and Training                          | 9.3                       | 78.0                                    | 22.0                              | 350.9           | 328.2         | 288.2         | 22.6          | 6.9        | 62.7          | 21.8        | 42           |
| Construction                                    | 9.0                       | 77.3                                    | 22.7                              | 340.4           | 354.1         | 304.7         | -13.7         | -3.9       | 35.8          | 11.7        | 37           |
| Manufacturing                                   | 7.0                       | 77.2                                    | 22.8                              | 264.2           | 279.6         | 280.0         | -15.4         | -5.5       | -15.8         | -5.6        | 44           |
| Accommodation and Food Services                 | 6.4                       | 79.4                                    | 20.6                              | 241.3           | 222.9         | 179.0         | 18.4          | 8.3        | 62.3          | 34.8        | 26           |
| Public Administration and Safety                | 5.6                       | 76.2                                    | 23.8                              | 212.3           | 192.7         | 178.1         | 19.6          | 10.2       | 34.2          | 19.2        | 43           |
| Transport, Postal and Warehousing               | 5.4                       | 84.6                                    | 15.4                              | 203.8           | 189.8         | 176.3         | 14.0          | 7.4        | 27.5          | 15.6        | 43           |
| Financial and Insurance Services                | 4.2                       | 91.0                                    | 9.0                               | 160.3           | 161.7         | 136.6         | -1.5          | -0.9       | 23.7          | 17.4        | 40           |
| Other Services                                  | 3.6                       | 76.2                                    | 23.8                              | 136.2           | 131.3         | 110.7         | 4.9           | 3.7        | 25.5          | 23.1        | 40           |
| Administrative and Support Services             | 3.0                       | 80.2                                    | 19.8                              | 112.4           | 113.0         | 109.0         | -0.6          | -0.5       | 3.4           | 3.1         | 41           |
| Wholesale Trade                                 | 2.5                       | 85.7                                    | 14.3                              | 96.4            | 108.5         | 113.0         | -12.1         | -11.2      | -16.6         | -14.7       | 44           |
| Arts and Recreation Services                    | 2.0                       | 81.7                                    | 18.3                              | 75.3            | 79.0          | 61.4          | -3.7          | -4.7       | 13.9          | 22.6        | 35           |
| Agriculture, Forestry and Fishing               | 1.8                       | 25.1                                    | 74.9                              | 69.2            | 83.0          | 88.2          | -13.8         | -16.6      | -19.0         | -21.6       | 49           |
| Information Media and Telecommunications        | 1.5                       | 89.2                                    | 10.8                              | 57.9            | 57.8          | 54.2          | 0.1           | 0.3        | 3.7           | 6.8         | 39           |
| Rental, Hiring and Real Estate Services         | 1.4                       | 83.2                                    | 16.8                              | 52.1            | 55.5          | 51.5          | -3.4          | -6.1       | 0.7           | 1.3         | 41           |
| Electricity, Gas, Water and Waste Services      | 1.3                       | 67.5                                    | 32.5                              | 47.4            | 52.0          | 41.3          | -4.6          | -8.8       | 6.2           | 14.9        | 42           |
| Mining  | 0.3                       | 50.0                                    | 50.0                              | 12.3            | 13.6          | 8.6           | -1.3          | -9.7       | 3.7           | 43.7        | 44           |
| <b>All Industries</b>                           | <b>100.0</b>              | <b>78.9</b>                             | <b>21.1</b>                       | <b>3787.0</b>   | <b>3716.4</b> | <b>3294.4</b> | <b>70.7</b>   | <b>1.9</b> | <b>492.6</b>  | <b>15.0</b> | <b>40</b>    |

Source: ABS Labour Force Survey, Detailed, February 2026, four quarter averages. \*Median age is from the ABS Census of Population and Housing, 2021.