



# Employment Region Industry profile

## Somerset Employment Region

Date of publishing: 15 April 2026

### Overview

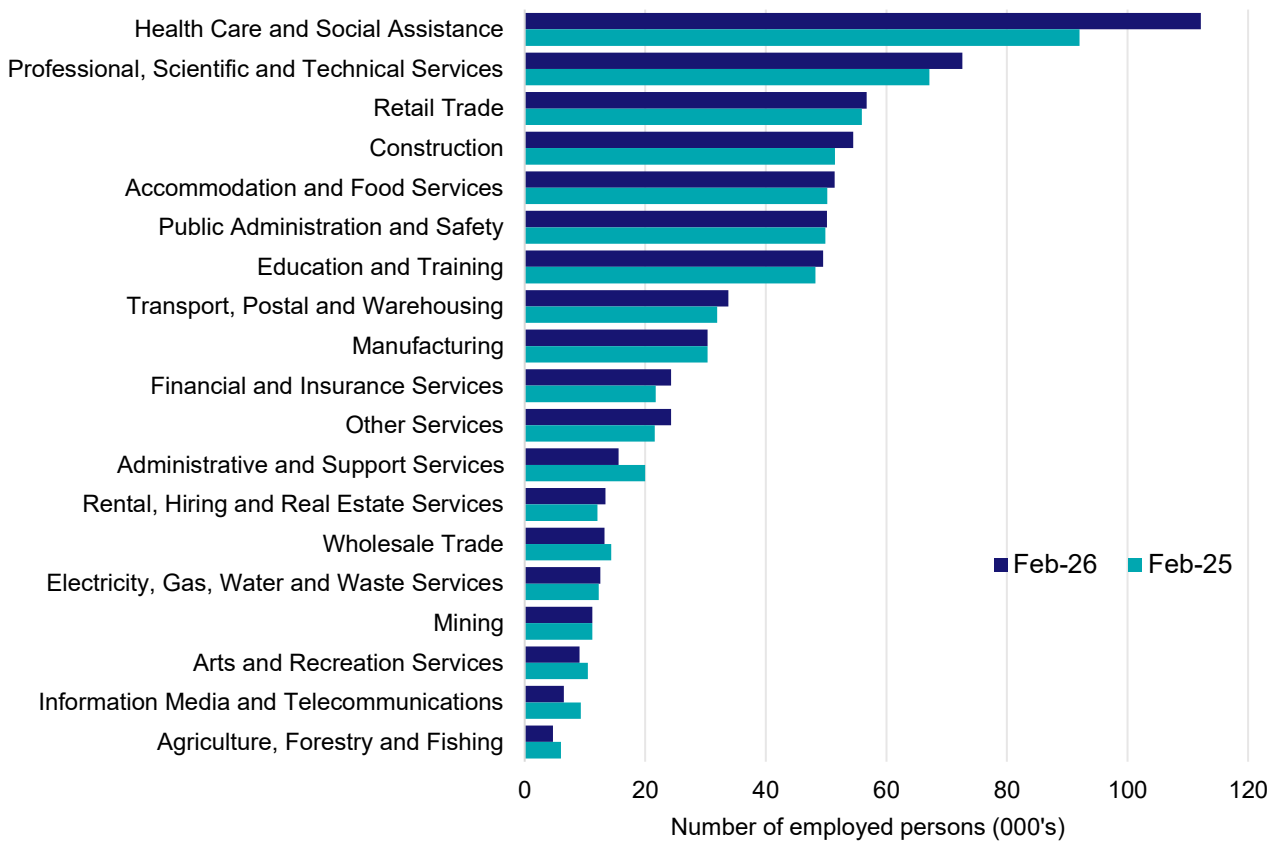
In February 2026, there were around 646,000 people employed in the Somerset Employment Region. The 5 largest employing industries in the region were Health Care and Social Assistance, Professional, Scientific and Technical Services, Retail Trade, Construction, and Accommodation and Food Services. Together these 5 industries accounted for 54% of employment in the region.

Over the year to February 2026, employment in:

- Health Care and Social Assistance rose by 21.8% to stand at 112,100
- Professional, Scientific and Technical Services rose by 8.1% to stand at 72,600
- Retail Trade rose by 1.4% to stand at 56,700.

In Health Care and Social Assistance in the Somerset Employment Region, 60% of workers were employed full-time; 74% were female; and the median age of the workforce was 40.

### Employment by industry, February 2026 and February 2025



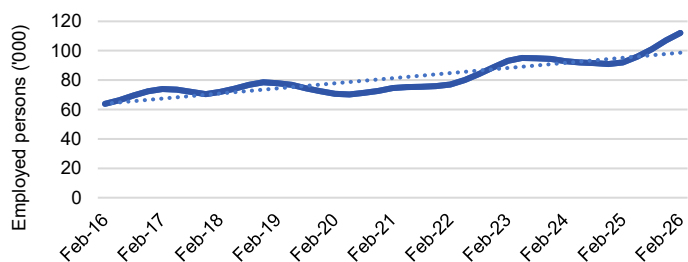
Source: ABS Labour Force Survey\*, Detailed, four quarter averages, February 2026. Note that total employment for the region (four quarter averaged data) will not match data published in the Employment Region Labour Market dashboards (modelled estimates).

\*ABS Labour Force Survey data are based on the combined SA4s of Brisbane - North; Brisbane Inner City; Moreton Bay - North; and Moreton Bay - South.

**Notes: Data are the latest available. A high degree of caution should be exercised when interpreting data at the regional level, particularly in regards to percentage changes, given the volatility of the underlying data. For any enquiries related to the data in this report, please contact [RegionalWorkforceAssessment@jobsandskills.gov.au](mailto:RegionalWorkforceAssessment@jobsandskills.gov.au)**

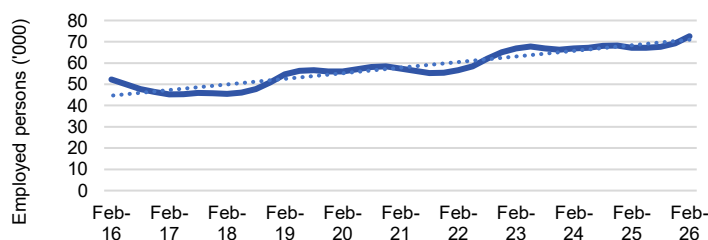
# Five largest employing industries: key statistics

## Health Care and Social Assistance



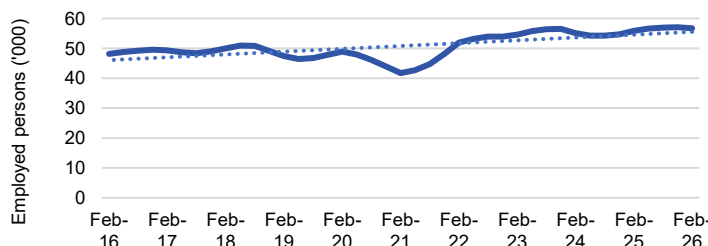
Number employed (Feb-26):	112,100
1 year employment change:	21.8%
5 year employment change:	50.3%
10 year employment change:	75.6%
Youth share of employment:	11.8%
Mature age share of employment:	18.7%

## Professional, Scientific and Technical Services



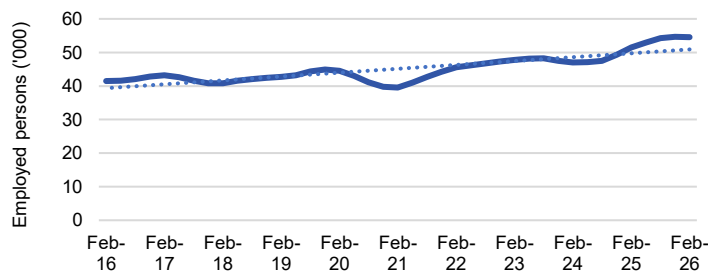
Number employed (Feb-26):	72,600
1 year employment change:	8.1%
5 year employment change:	26.3%
10 year employment change:	39.1%
Youth share of employment:	6.4%
Mature age share of employment:	9.1%

## Retail Trade



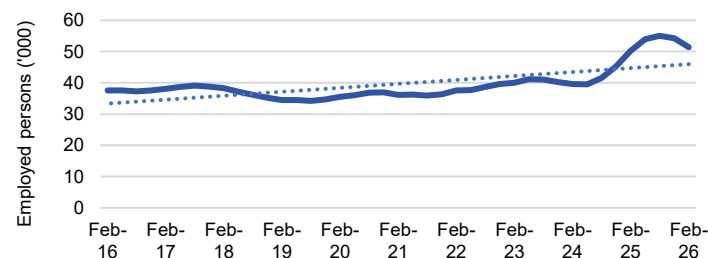
Number employed (Feb-26):	56,700
1 year employment change:	1.4%
5 year employment change:	35.9%
10 year employment change:	17.7%
Youth share of employment:	19.0%
Mature age share of employment:	7.1%

## Construction



Number employed (Feb-26):	54,500
1 year employment change:	5.9%
5 year employment change:	37.9%
10 year employment change:	31.3%
Youth share of employment:	7.6%
Mature age share of employment:	7.7%

## Accommodation and Food Services



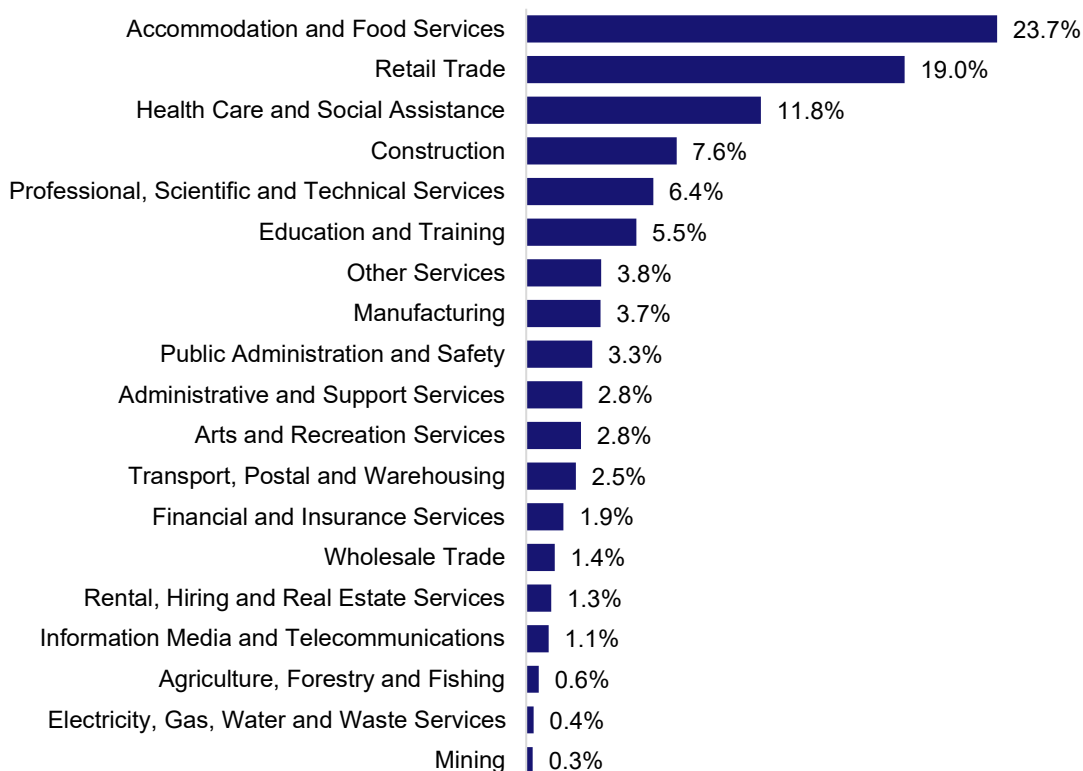
Number employed (Feb-26):	51,400
1 year employment change:	2.4%
5 year employment change:	42.4%
10 year employment change:	36.8%
Youth share of employment:	23.7%
Mature age share of employment:	2.5%

Source: ABS Labour Force Survey, Detailed, four quarter averages, February 2026, except youth and mature age data which are from the ABS Census of Population and Housing, 2021.

**Notes:** In each chart, the solid line is the level of employment and the dotted line is a simple linear trend line for the 10 year period. Given the volatility of the underlying data, employment estimates should be treated with a high degree of caution. Particular focus should be placed on the employment series over time to ascertain more reliable long-term growth trends.

# Employment characteristics by Industry

## Which industries are youth (aged 15-24) employed in?



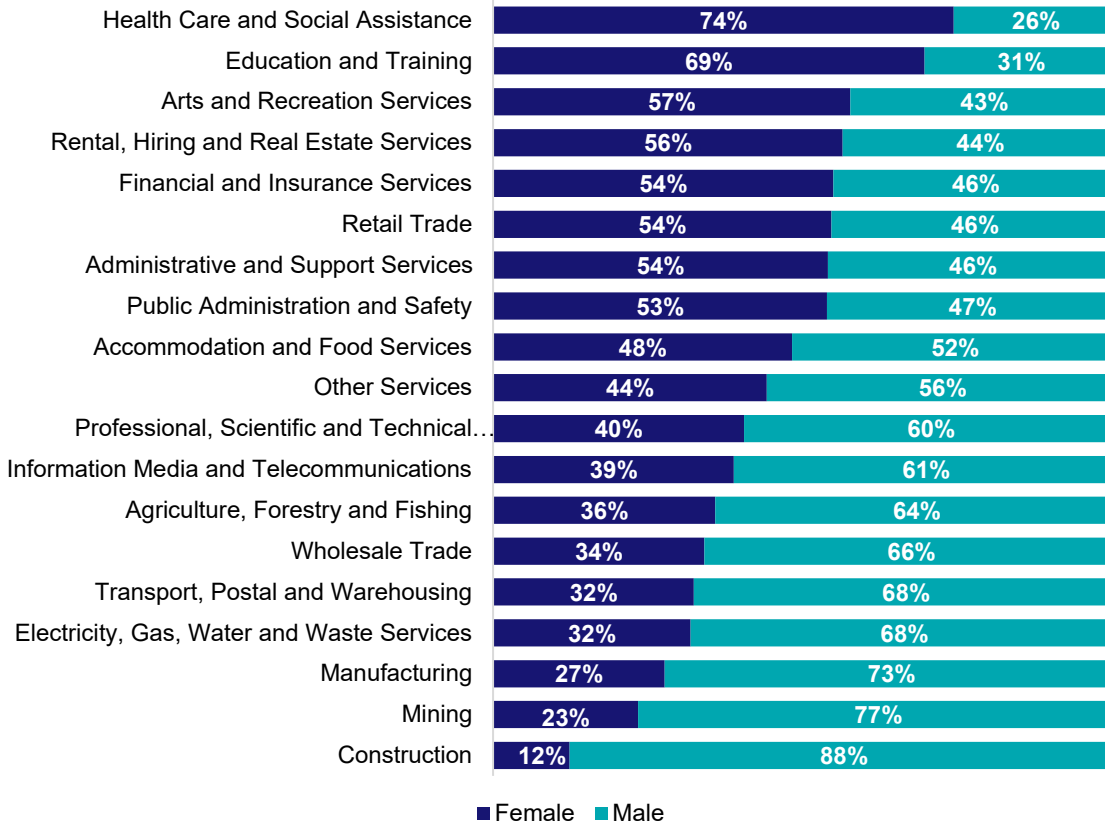
Source: ABS Census of Population and Housing, 2021.

## Which industries are mature age persons (aged 55+) employed in?



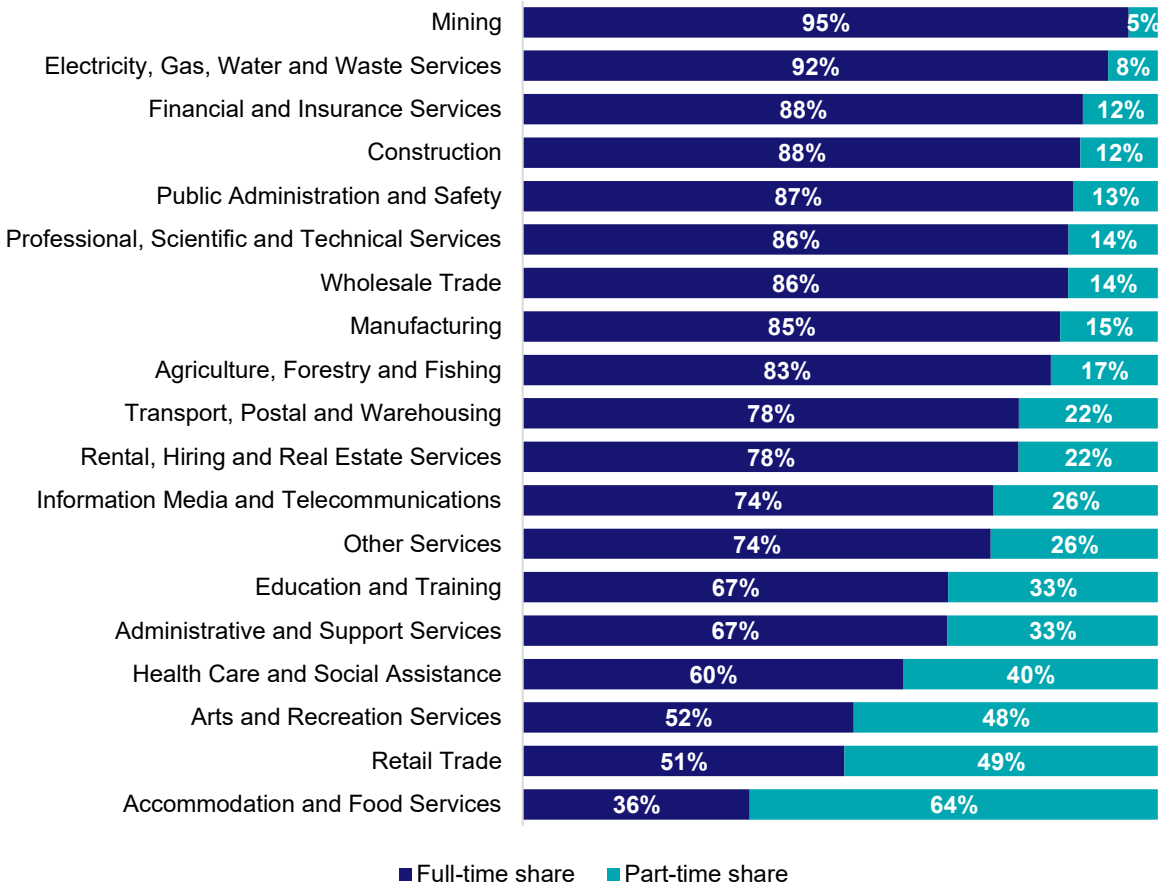
Source: ABS Census of Population and Housing, 2021. Note: SA2 level Census data have been aggregated to the Employment Region level.

## Gender share by industry



Source: ABS Labour Force Survey, Detailed, four quarter averages, February 2026.

## Full-time and part-time employment status by industry



Source: ABS Labour Force Survey, Detailed, four quarter averages, February 2026.

## Appendix

### Employment by industry, Somerset, February 2026

Industry (in order of size)	Share of employment in the region Feb-26 (%)	Employed ('000)			Full-time share %	Part-time share %	Median age *
		Feb-26	Feb-25	Feb-21			
Health Care and Social Assistance	17.4	112.1	92.0	74.6	59.9	40.1	40
Professional, Scientific and Technical Services	11.2	72.6	67.1	57.4	86.0	14.0	39
Retail Trade	8.8	56.7	55.9	41.7	50.7	49.3	31
Construction	8.4	54.5	51.5	39.5	87.8	12.2	38
Accommodation and Food Services	8.0	51.4	50.2	36.1	35.8	64.2	23
Public Administration and Safety	7.8	50.2	49.9	44.8	86.7	13.3	42
Education and Training	7.7	49.5	48.2	44.6	67.0	33.0	43
Transport, Postal and Warehousing	5.2	33.8	31.9	29.5	78.1	21.9	43
Manufacturing	4.7	30.3	30.3	25.7	84.6	15.4	42
Financial and Insurance Services	3.8	24.3	21.7	19.3	88.2	11.8	40
Other Services	3.8	24.3	21.6	16.6	73.7	26.3	37
Administrative and Support Services	2.4	15.6	20.0	15.7	66.8	33.2	38
Rental, Hiring and Real Estate Services	2.1	13.4	12.1	13.6	78.1	21.9	40
Wholesale Trade	2.1	13.3	14.3	15.6	85.9	14.1	43
Electricity, Gas, Water and Waste Services	1.9	12.5	12.3	8.2	92.2	7.8	44
Mining	1.7	11.2	11.2	10.2	95.4	4.6	41
Arts and Recreation Services	1.4	9.1	10.5	8.7	52.1	47.9	32
Information Media and Telecommunications	1.0	6.5	9.3	6.6	74.1	25.9	37
Agriculture, Forestry and Fishing	0.7	4.7	6.0	3.9	83.2	16.8	37
<b>All industries</b>	<b>100.0</b>	<b>646.0</b>	<b>616.0</b>	<b>512.4</b>	<b>71.3</b>	<b>28.7</b>	<b>38</b>

Source: ABS Labour Force Survey, Detailed, four quarter averages, February 2026. \*Median age is from the ABS Census of Population and Housing, 2021. Median age has been derived using aggregated SA2s for the Employment Region.

**Note: Small cells should be viewed with caution due to small sample sizes and regional volatility.**