



Industry profile

Queensland

Date of publishing: 15 April 2026

Overview

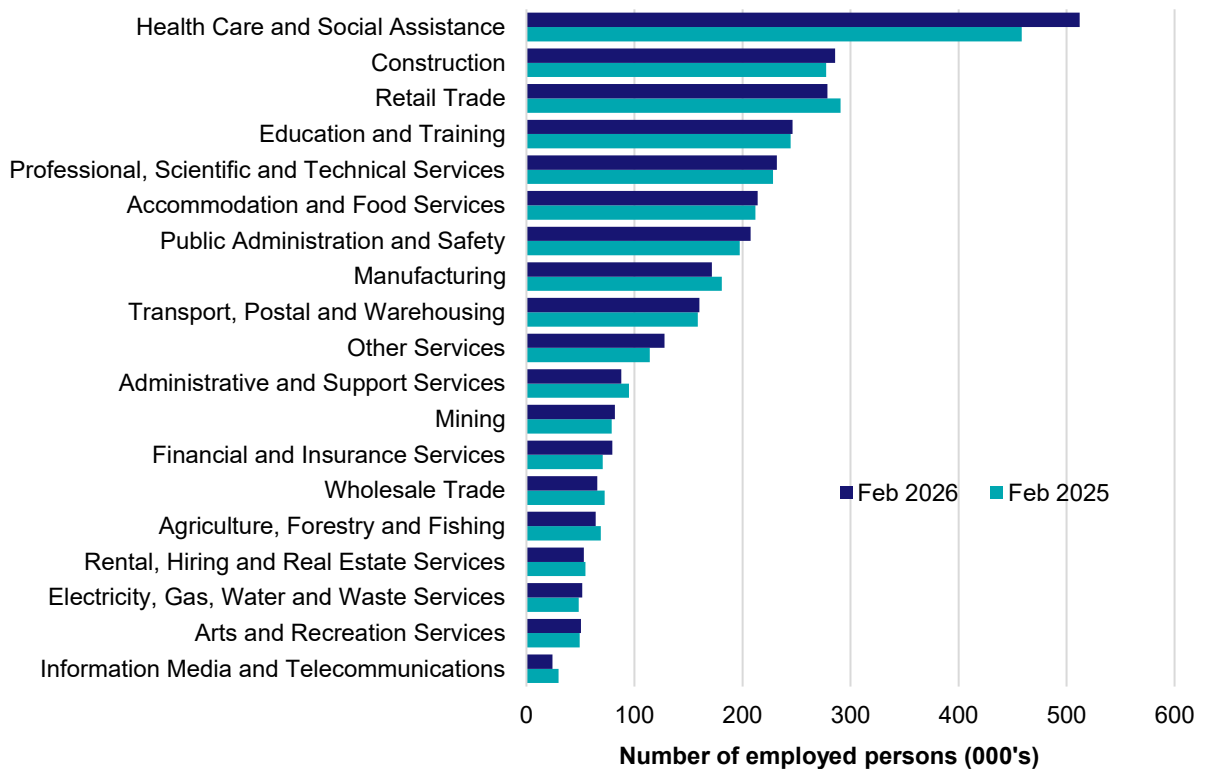
In February 2026, there were around 2,993,800 people employed in Queensland. The 5 largest employing industries in Queensland were Health Care and Social Assistance, Construction, Retail Trade, Education and Training and Professional, Scientific and Technical Services. Together these 5 industries accounted for 52% of all employment.

Over the year to February 2026, employment in:

- Health Care and Social Assistance rose by 11.7% to stand at 512,100
- Construction rose by 3.1% to stand at 285,900
- Retail Trade fell by 4.2% to stand at 278,700.

In Health Care and Social Assistance in Queensland, 58% of workers were employed full-time; 76% were Female; and the median age of the workforce was 42. Around 50% of employed persons in this industry were located in Greater Brisbane.

Employment by industry, February 2026 and February 2025

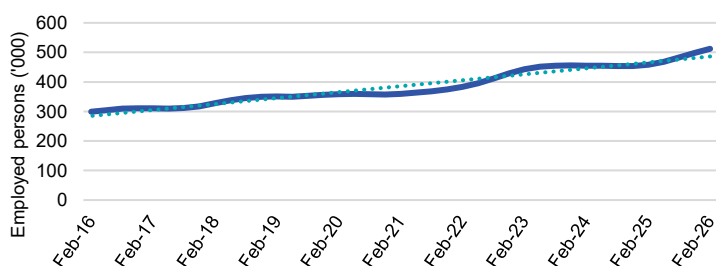


Source: ABS Labour Force Survey, Detailed, four quarter averages, February 2026. Note that total employment (four quarter averaged data) may not match data published in the Labour Market dashboards (6 month averaged data).

Note: For any enquiries related to the data in this report, contact RegionalWorkforceAssessment@jobsandskills.gov.au

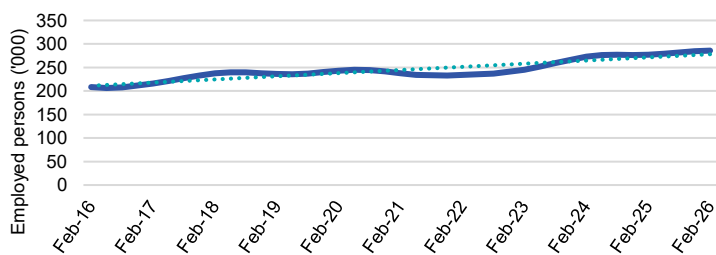
Five largest employing industries: key statistics

Health Care and Social Assistance



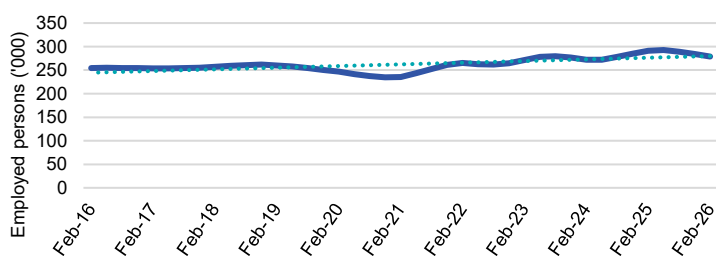
| | |
|---------------------------------|---------|
| Number employed (Feb-26): | 512,100 |
| 1 year employment change: | 11.7% |
| 5 year employment change: | 42.6% |
| 10 year employment change: | 71.2% |
| Youth share of employment: | 10.6% |
| Mature age share of employment: | 17.6% |

Construction



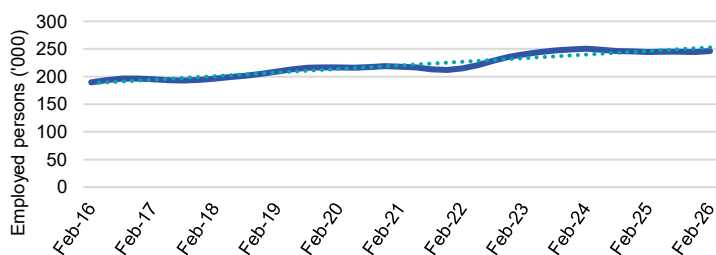
| | |
|---------------------------------|---------|
| Number employed (Feb-26): | 285,900 |
| 1 year employment change: | 3.1% |
| 5 year employment change: | 20.2% |
| 10 year employment change: | 37.2% |
| Youth share of employment: | 8.7% |
| Mature age share of employment: | 8.6% |

Retail Trade



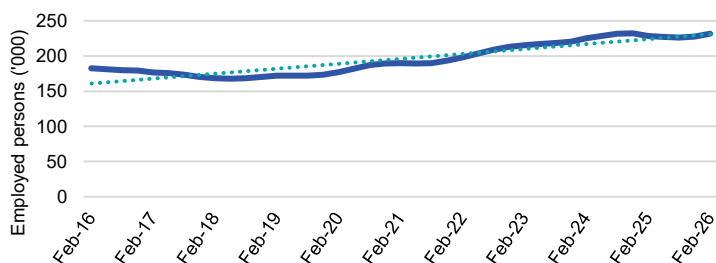
| | |
|---------------------------------|---------|
| Number employed (Feb-26): | 278,700 |
| 1 year employment change: | -4.2% |
| 5 year employment change: | 18.5% |
| 10 year employment change: | 9.6% |
| Youth share of employment: | 19.6% |
| Mature age share of employment: | 7.7% |

Education and Training



| | |
|---------------------------------|---------|
| Number employed (Feb-26): | 246,400 |
| 1 year employment change: | 0.8% |
| 5 year employment change: | 13.1% |
| 10 year employment change: | 29.9% |
| Youth share of employment: | 5.2% |
| Mature age share of employment: | 10.6% |

Professional, Scientific and Technical Services



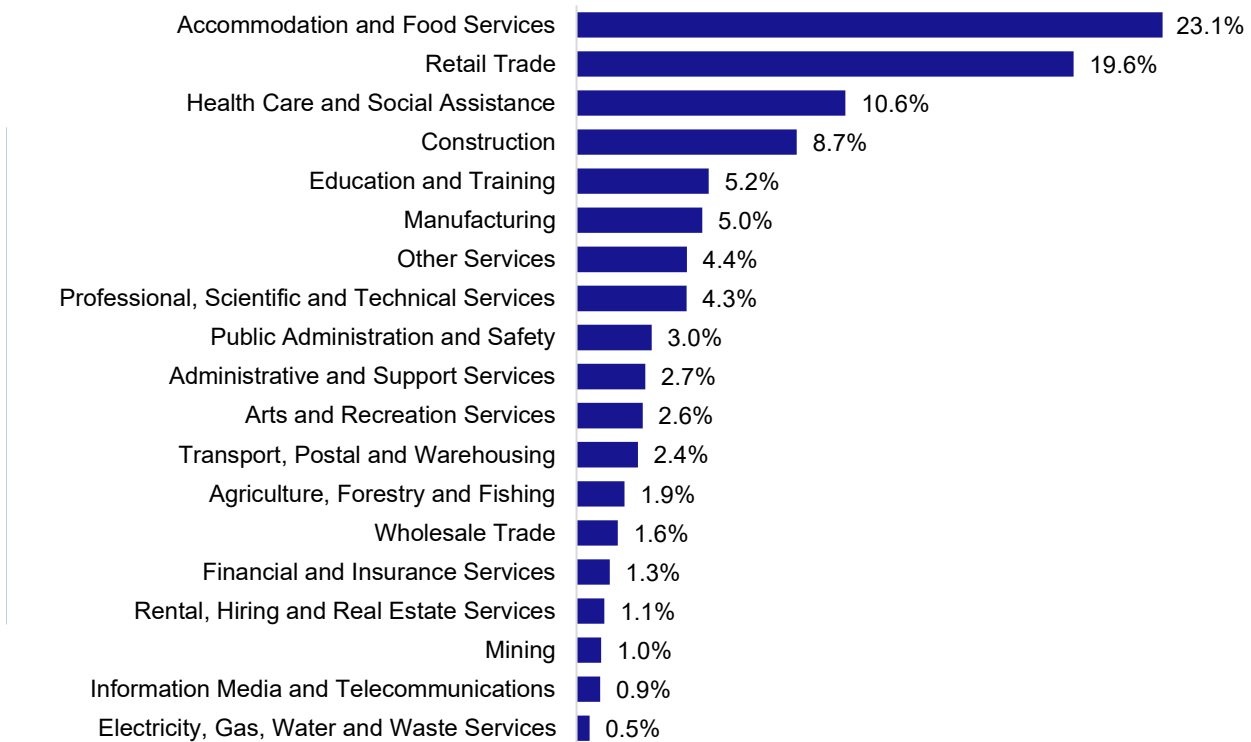
| | |
|---------------------------------|---------|
| Number employed (Feb-26): | 231,800 |
| 1 year employment change: | 1.5% |
| 5 year employment change: | 22.2% |
| 10 year employment change: | 27.1% |
| Youth share of employment: | 4.3% |
| Mature age share of employment: | 6.3% |

Source: ABS Labour Force Survey, Detailed, four quarter averages, February 2026, except youth and mature age data which are from the ABS Census of Population and Housing, 2021.

Note: In each chart, the solid line is the level of employment and the dotted line is a simple linear trend line for the 10 year period.

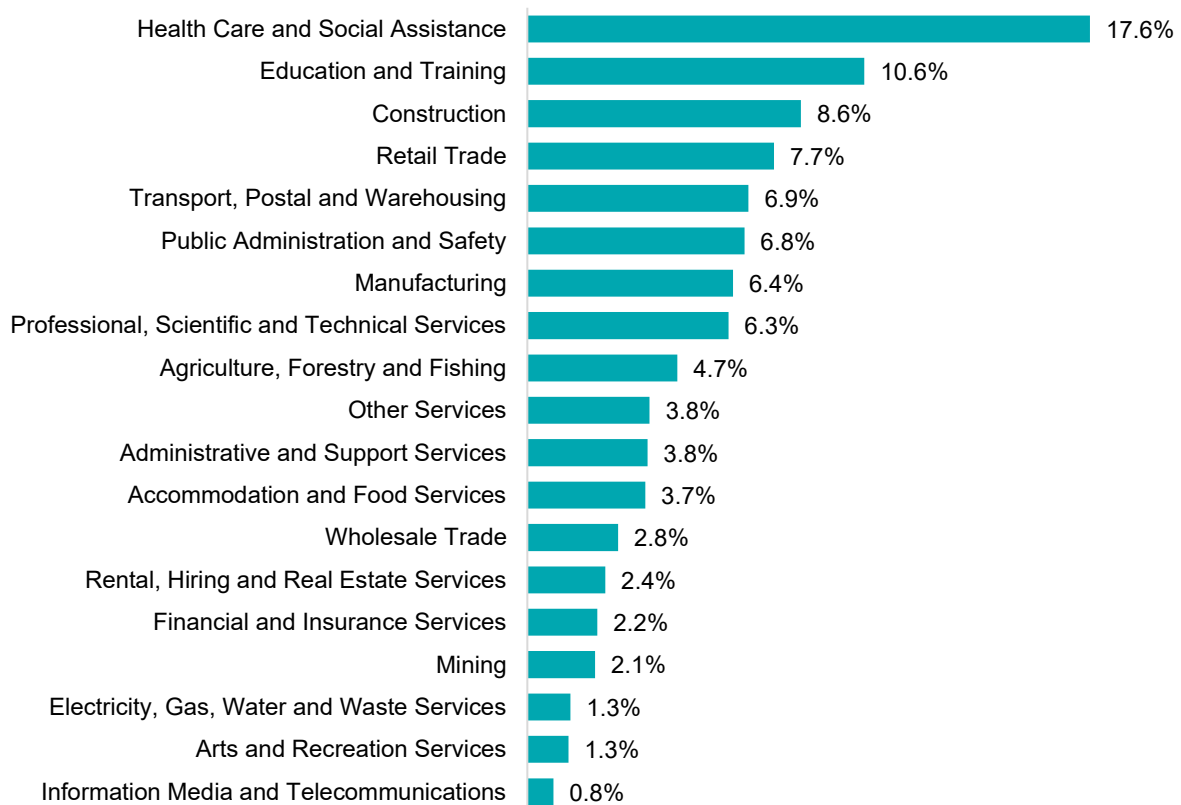
Employment characteristics by Industry

Which industries are youth (aged 15-24) employed in?



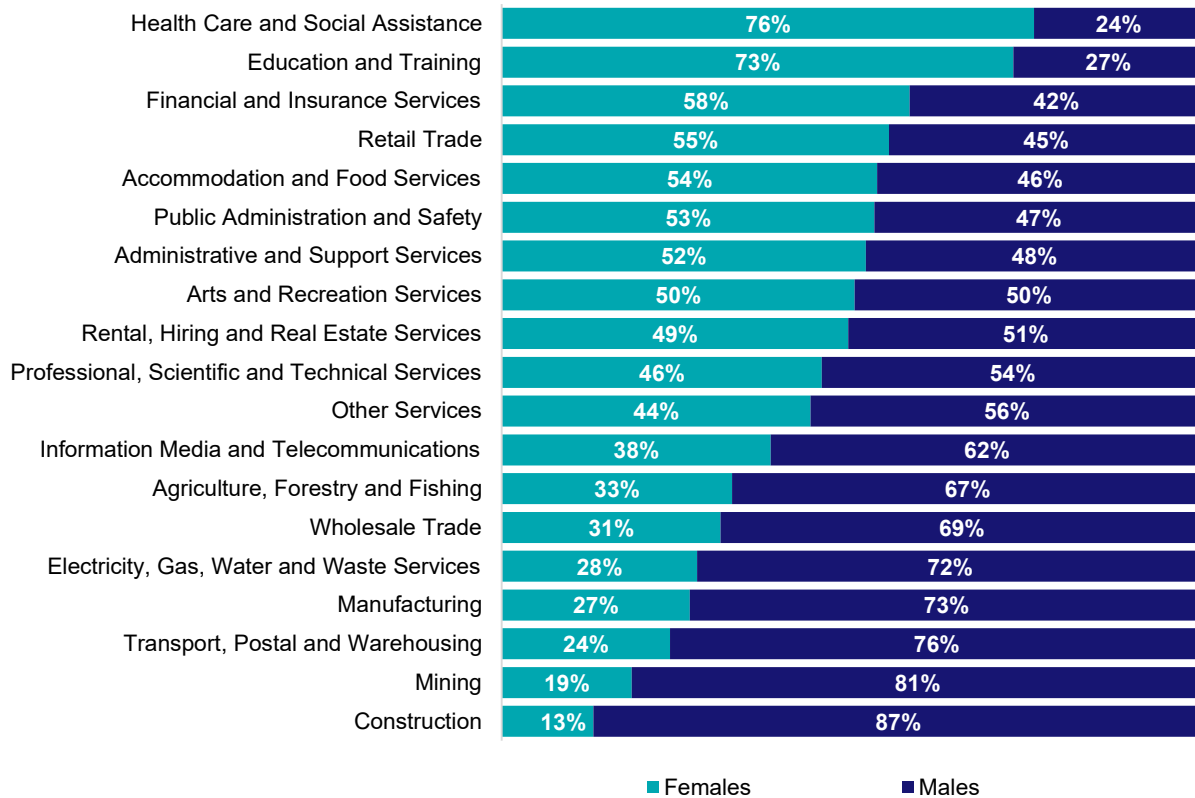
Source: ABS Census of Population and Housing, 2021.

Which industries are mature age persons (aged 55+) employed in?



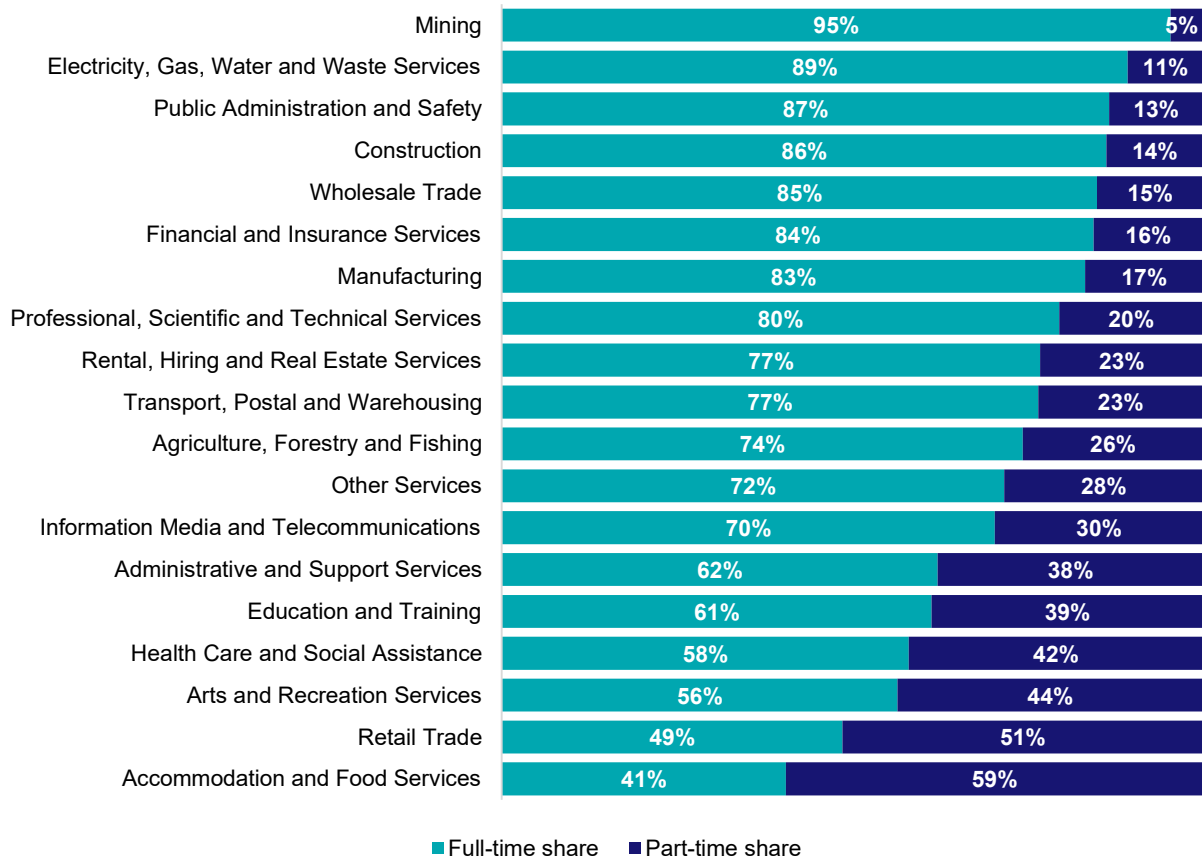
Source: ABS Census of Population and Housing, 2021.

Gender share by industry



Source: ABS Labour Force Survey, Detailed, four quarter averages, February 2026.

Full-time and part-time employment status by industry



Source: ABS Labour Force Survey, Detailed, four quarter averages, February 2026.

Appendix

Employment by industry, Queensland, February 2026

| Industry (in order of size) | Share of emp't Feb-26 (%) | Share of emp't in Greater Brisbane (%) | Share of emp't in Rest of QLD (%) | Employed ('000) | | | 1 year change | | 5 year change | | Median age * |
|---|---------------------------|--|-----------------------------------|-----------------|---------------|---------------|---------------|------------|---------------|-------------|--------------|
| | | | | Feb-26 | Feb-25 | Feb-21 | ('000) | % | ('000) | % | |
| Health Care and Social Assistance | 17.1 | 50.3 | 49.7 | 512.1 | 458.6 | 359.1 | 53.5 | 11.7 | 153.0 | 42.6 | 42 |
| Construction | 9.5 | 48.5 | 51.5 | 285.9 | 277.3 | 237.9 | 8.5 | 3.1 | 48.0 | 20.2 | 39 |
| Retail Trade | 9.3 | 50.8 | 49.2 | 278.7 | 290.9 | 235.1 | -12.3 | -4.2 | 43.5 | 18.5 | 33 |
| Education and Training | 8.2 | 48.7 | 51.3 | 246.4 | 244.4 | 217.9 | 2.0 | 0.8 | 28.5 | 13.1 | 44 |
| Professional, Scientific and Technical Services | 7.7 | 63.5 | 36.5 | 231.8 | 228.4 | 189.6 | 3.4 | 1.5 | 42.2 | 22.2 | 40 |
| Accommodation and Food Services | 7.2 | 49.4 | 50.6 | 214.1 | 211.9 | 179.1 | 2.2 | 1.0 | 35.0 | 19.5 | 25 |
| Public Administration and Safety | 6.9 | 57.4 | 42.6 | 207.5 | 197.4 | 165.3 | 10.1 | 5.1 | 42.2 | 25.5 | 44 |
| Manufacturing | 5.7 | 54.2 | 45.8 | 171.6 | 180.9 | 166.4 | -9.3 | -5.1 | 5.1 | 3.1 | 42 |
| Transport, Postal and Warehousing | 5.3 | 61.4 | 38.6 | 160.0 | 158.7 | 127.5 | 1.3 | 0.8 | 32.5 | 25.5 | 45 |
| Other Services | 4.3 | 50.4 | 49.6 | 127.9 | 114.3 | 100.9 | 13.6 | 11.9 | 26.9 | 26.7 | 39 |
| Administrative and Support Services | 2.9 | 44.8 | 55.2 | 87.7 | 94.8 | 82.2 | -7.1 | -7.5 | 5.5 | 6.7 | 41 |
| Mining | 2.7 | 27.8 | 72.2 | 81.8 | 78.8 | 72.6 | 3.1 | 3.9 | 9.3 | 12.8 | 42 |
| Financial and Insurance Services | 2.7 | 65.3 | 34.7 | 79.5 | 70.6 | 65.5 | 8.9 | 12.6 | 14.0 | 21.3 | 41 |
| Wholesale Trade | 2.2 | 55.0 | 45.0 | 65.6 | 72.5 | 74.3 | -6.9 | -9.6 | -8.7 | -11.7 | 43 |
| Agriculture, Forestry and Fishing | 2.1 | 21.0 | 79.0 | 64.0 | 68.7 | 77.9 | -4.7 | -6.9 | -13.9 | -17.9 | 47 |
| Rental, Hiring and Real Estate Services | 1.8 | 60.8 | 39.2 | 53.1 | 54.7 | 51.2 | -1.6 | -2.9 | 1.9 | 3.7 | 44 |
| Electricity, Gas, Water and Waste Services | 1.7 | 50.4 | 49.6 | 51.7 | 48.4 | 30.2 | 3.3 | 6.9 | 21.6 | 71.5 | 44 |
| Arts and Recreation Services | 1.7 | 51.2 | 48.8 | 50.4 | 49.4 | 42.5 | 1.0 | 2.0 | 7.9 | 18.5 | 36 |
| Information Media and Telecommunications | 0.8 | 57.8 | 42.2 | 24.0 | 29.7 | 27.8 | -5.7 | -19.1 | -3.8 | -13.6 | 39 |
| All Industries | 100.0 | 51.7 | 48.3 | 2993.8 | 2930.6 | 2503.2 | 63.3 | 2.2 | 490.6 | 19.6 | 40 |

Source: ABS Labour Force Survey, Detailed, February 2026, four quarter averages. *Median age is from the ABS Census of Population and Housing, 2021.