



Employment Region Industry profile

North Eastern Melbourne Employment Region

Date of publishing: 15 April 2026

Overview

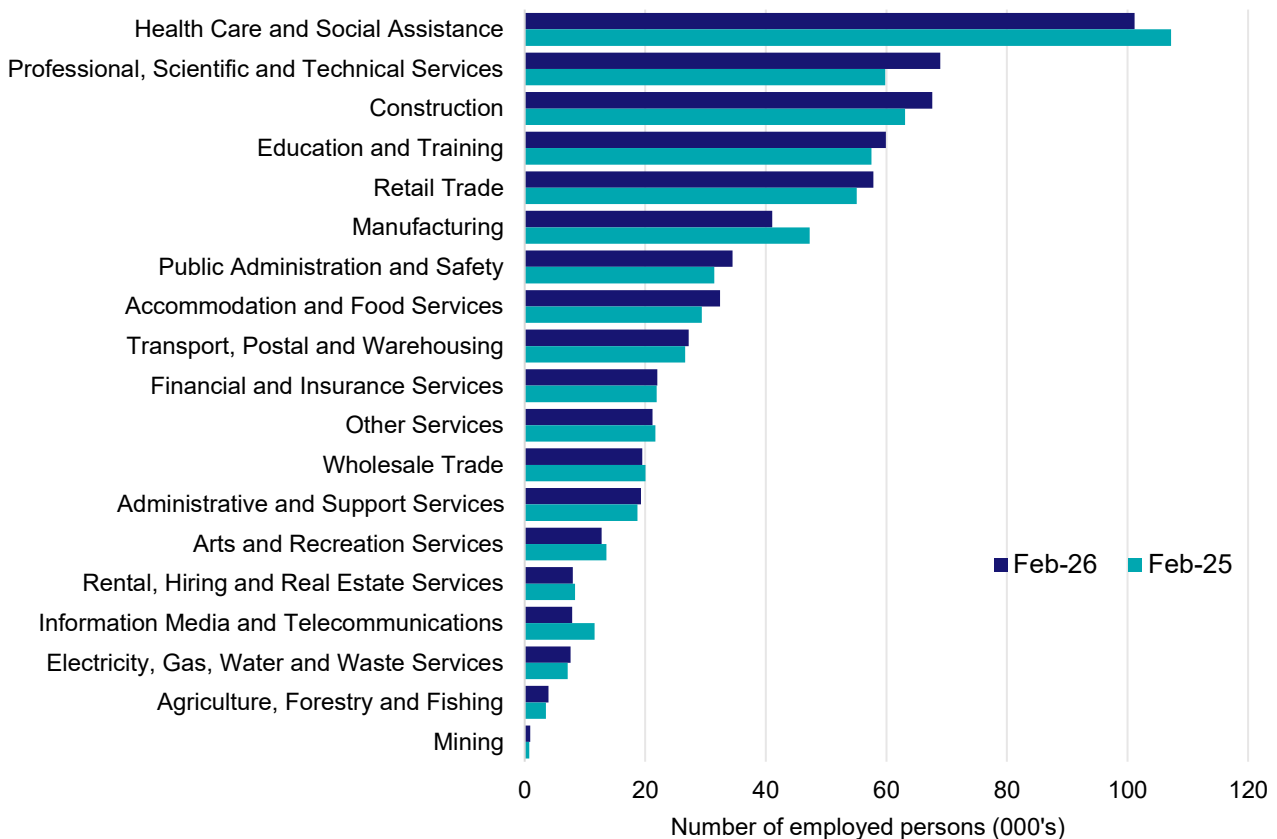
In February 2026, there were around 613,700 people employed in the North Eastern Melbourne Employment Region. The 5 largest employing industries in the region were Health Care and Social Assistance, Professional, Scientific and Technical Services, Construction, Education and Training, and Retail Trade. Together these 5 industries accounted for 58% of employment in the region.

Over the year to February 2026, employment in:

- Health Care and Social Assistance fell by 5.6% to stand at 101,200
- Professional, Scientific and Technical Services rose by 15.2% to stand at 68,900
- Construction rose by 7.2% to stand at 67,600.

In Health Care and Social Assistance in the North Eastern Melbourne Employment Region, 52% of workers were employed part-time; 79% were female; and the median age of the workforce was 42.

Employment by industry, February 2026 and February 2025



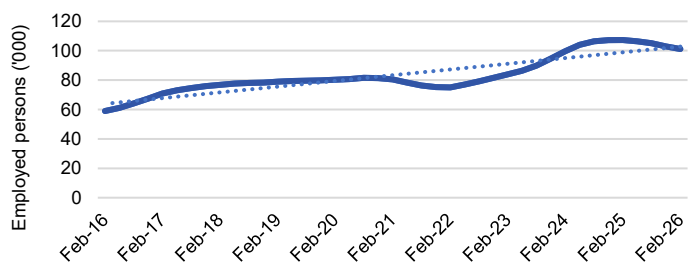
Source: ABS Labour Force Survey*, Detailed, four quarter averages, February 2026. Note that total employment for the region (four quarter averaged data) will not match data published in the Employment Region Labour Market dashboards (modelled estimates).

*ABS Labour Force Survey data are based on the combined SA4s of Melbourne - North East; and Melbourne - Outer East.

Notes: Data are the latest available. A high degree of caution should be exercised when interpreting data at the regional level, particularly in regards to percentage changes, given the volatility of the underlying data. For any enquiries related to the data in this report, please contact RegionalWorkforceAssessment@jobsandskills.gov.au

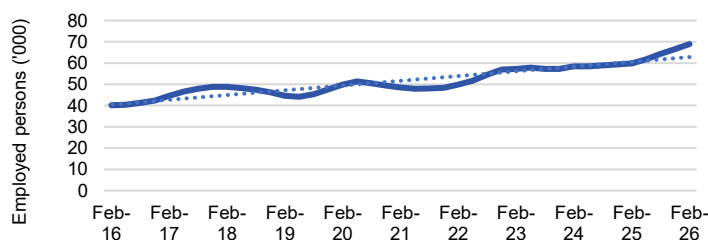
Five largest employing industries: key statistics

Health Care and Social Assistance



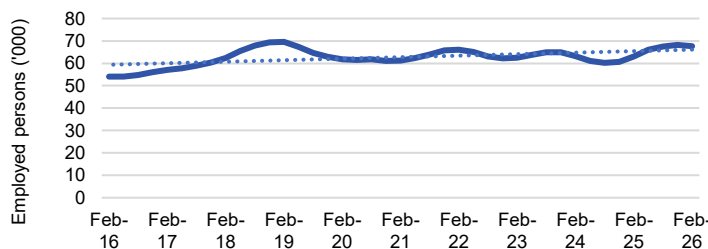
Number employed (Feb-26):	101,200
1 year employment change:	-5.6%
5 year employment change:	25.7%
10 year employment change:	71.6%
Youth share of employment:	9.5%
Mature age share of employment:	17.1%

Professional, Scientific and Technical Services



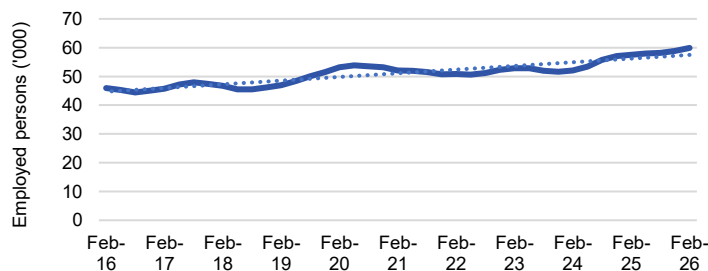
Number employed (Feb-26):	68,900
1 year employment change:	15.2%
5 year employment change:	42.2%
10 year employment change:	71.7%
Youth share of employment:	3.9%
Mature age share of employment:	7.4%

Construction



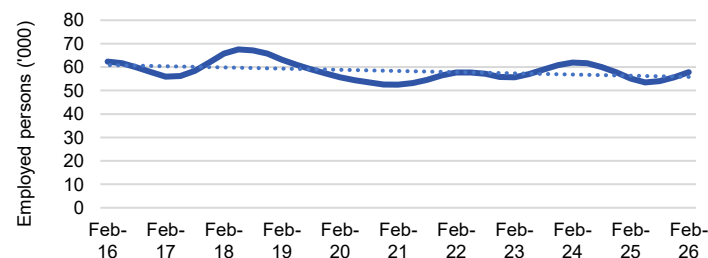
Number employed (Feb-26):	67,600
1 year employment change:	7.2%
5 year employment change:	10.5%
10 year employment change:	25.0%
Youth share of employment:	13.0%
Mature age share of employment:	9.6%

Education and Training



Number employed (Feb-26):	59,900
1 year employment change:	4.1%
5 year employment change:	15.0%
10 year employment change:	30.2%
Youth share of employment:	5.5%
Mature age share of employment:	10.8%

Retail Trade



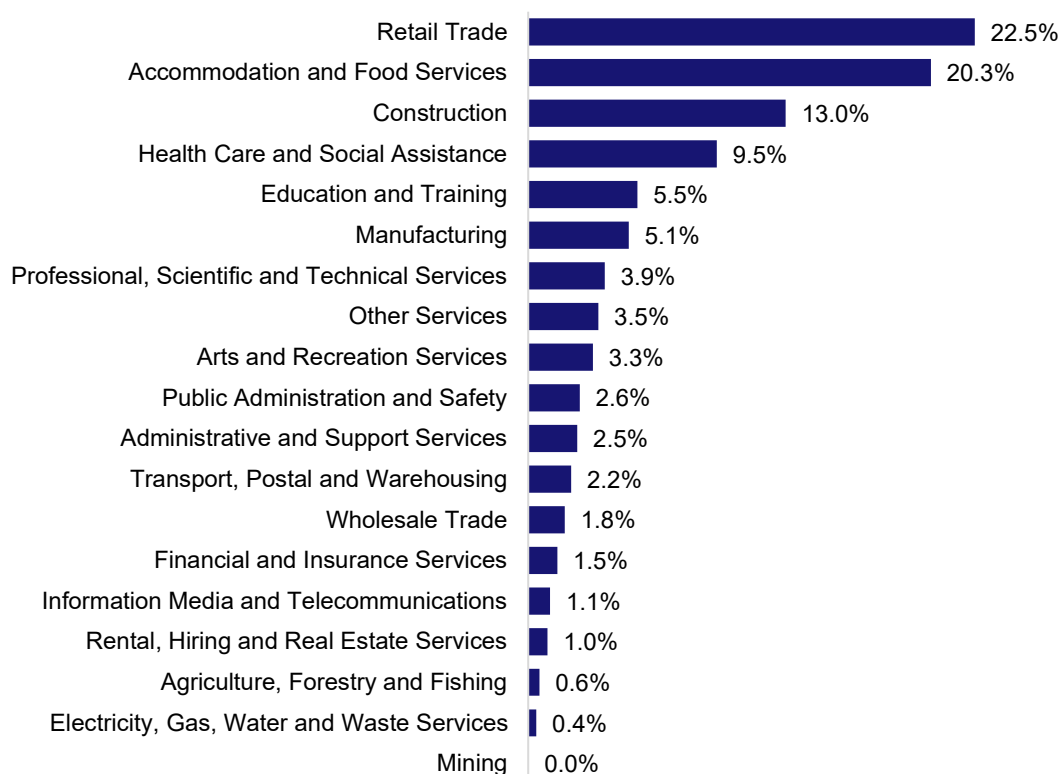
Number employed (Feb-26):	57,800
1 year employment change:	4.9%
5 year employment change:	10.0%
10 year employment change:	-7.3%
Youth share of employment:	22.5%
Mature age share of employment:	8.1%

Source: ABS Labour Force Survey, Detailed, four quarter averages, February 2026, except youth and mature age data which are from the ABS Census of Population and Housing, 2021.

Notes: In each chart, the solid line is the level of employment and the dotted line is a simple linear trend line for the 10 year period. Given the volatility of the underlying data, employment estimates should be treated with a high degree of caution. Particular focus should be placed on the employment series over time to ascertain more reliable long-term growth trends.

Employment characteristics by Industry

Which industries are youth (aged 15-24) employed in?



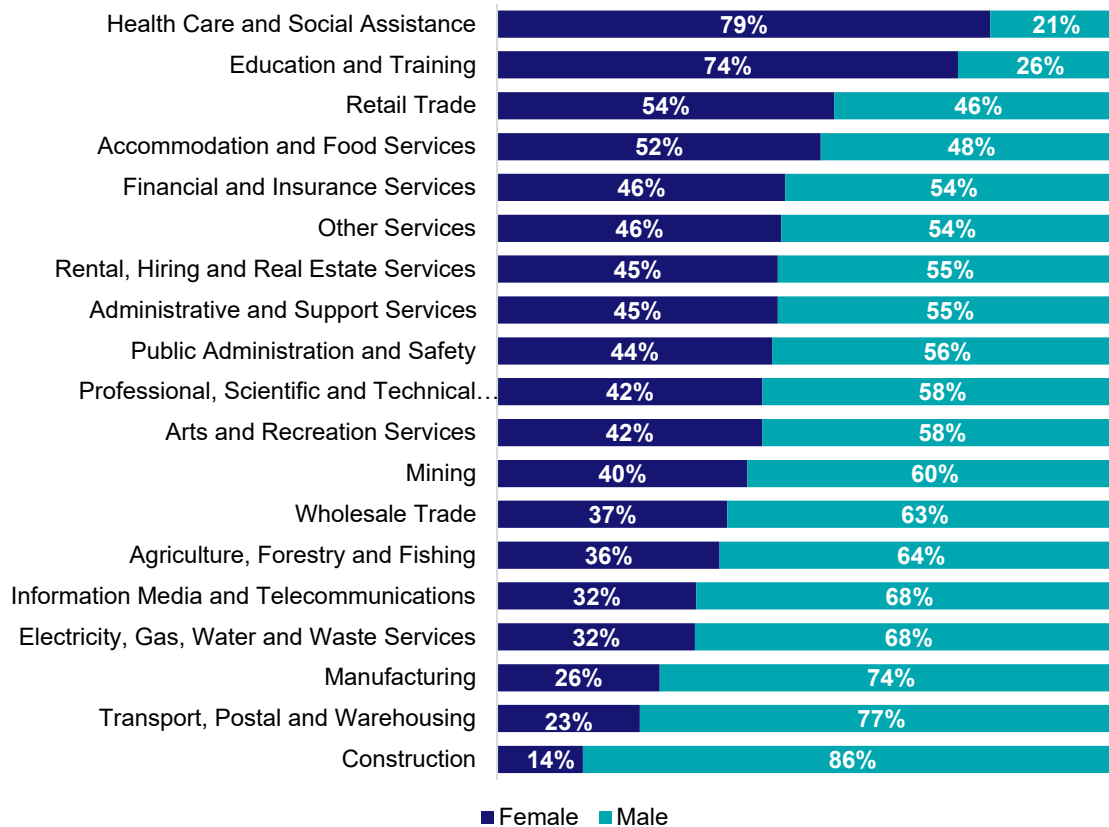
Source: ABS Census of Population and Housing, 2021.

Which industries are mature age persons (aged 55+) employed in?



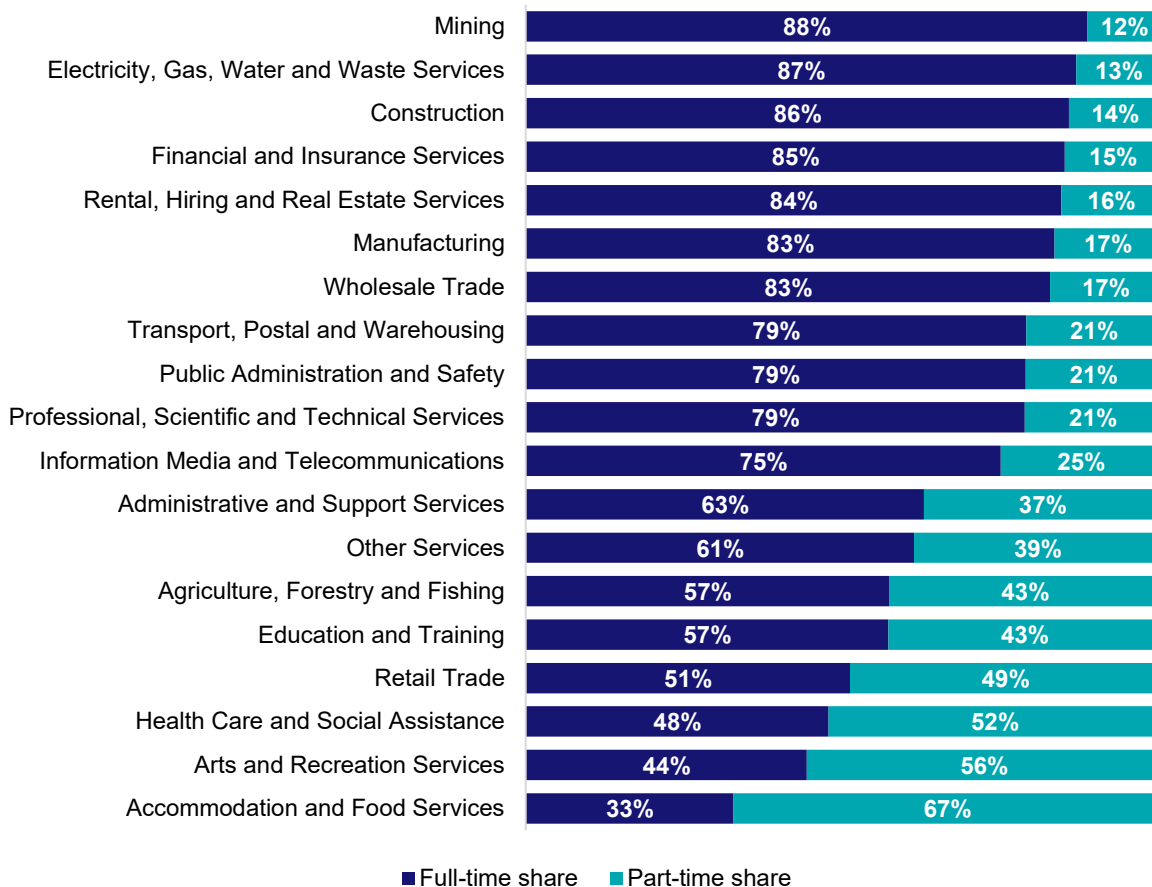
Source: ABS Census of Population and Housing, 2021. Note: SA2 level Census data have been aggregated to the Employment Region level.

Gender share by industry



Source: ABS Labour Force Survey, Detailed, four quarter averages, February 2026.

Full-time and part-time employment status by industry



Source: ABS Labour Force Survey, Detailed, four quarter averages, February 2026.

Appendix

Employment by industry, North Eastern Melbourne, February 2026

Industry (in order of size)	Share of employment in the region Feb-26 (%)	Employed ('000)			Full-time share %	Part-time share %	Median age *
		Feb-26	Feb-25	Feb-21			
Health Care and Social Assistance	16.5	101.2	107.2	80.5	47.7	52.3	42
Professional, Scientific and Technical Services	11.2	68.9	59.8	48.5	78.6	21.4	41
Construction	11.0	67.6	63.1	61.2	85.5	14.5	38
Education and Training	9.8	59.9	57.5	52.1	57.1	42.9	42
Retail Trade	9.4	57.8	55.1	52.6	51.1	48.9	34
Manufacturing	6.7	41.0	47.3	51.6	83.3	16.7	45
Public Administration and Safety	5.6	34.5	31.5	27.4	78.7	21.3	43
Accommodation and Food Services	5.3	32.4	29.4	25.6	32.7	67.3	24
Transport, Postal and Warehousing	4.4	27.2	26.6	24.5	78.8	21.2	44
Financial and Insurance Services	3.6	22.0	21.9	21.1	84.9	15.1	40
Other Services	3.5	21.2	21.7	23.0	61.2	38.8	41
Wholesale Trade	3.2	19.5	20.0	24.5	82.6	17.4	45
Administrative and Support Services	3.1	19.3	18.7	17.7	62.7	37.3	43
Arts and Recreation Services	2.1	12.8	13.6	9.6	44.3	55.7	33
Rental, Hiring and Real Estate Services	1.3	8.0	8.4	6.6	84.3	15.7	40
Information Media and Telecommunications	1.3	7.9	11.6	8.7	74.8	25.2	40
Electricity, Gas, Water and Waste Services	1.2	7.6	7.1	4.4	86.7	13.3	42
Agriculture, Forestry and Fishing	0.6	3.9	3.5	6.2	57.2	42.8	46
Mining	0.2	0.9	0.8	0.3	88.5	11.5	47
All industries	100.0	613.7	604.7	546.0	66.0	34.0	40

Source: ABS Labour Force Survey, Detailed, four quarter averages, February 2026. *Median age is from the ABS Census of Population and Housing, 2021. Median age has been derived using aggregated SA2s for the Employment Region.

Note: Small cells should be viewed with caution due to small sample sizes and regional volatility.