



**Australian Government**



**Jobs and Skills Australia**

## **Note regarding labour force data for the Broome, Esperance, Geraldton and Kalgoorlie Employment Regions**

These Employment Regions fall within the Western Australia – Outback (North and South) SA4. This SA4 is very large and covers much of regional and remote WA, including Broome, Esperance, Geraldton and Kalgoorlie. The WA Outback SA4 is a poor fit for these Employment Regions but is the only data readily available for the labour force. As a result, the labour force data for the Western Australia – Outback (North and South) SA4 is presented for each of these Employment Regions.



# Employment Region Industry profile

## Broome Employment Region

Date of publishing: 15 April 2026

### Overview

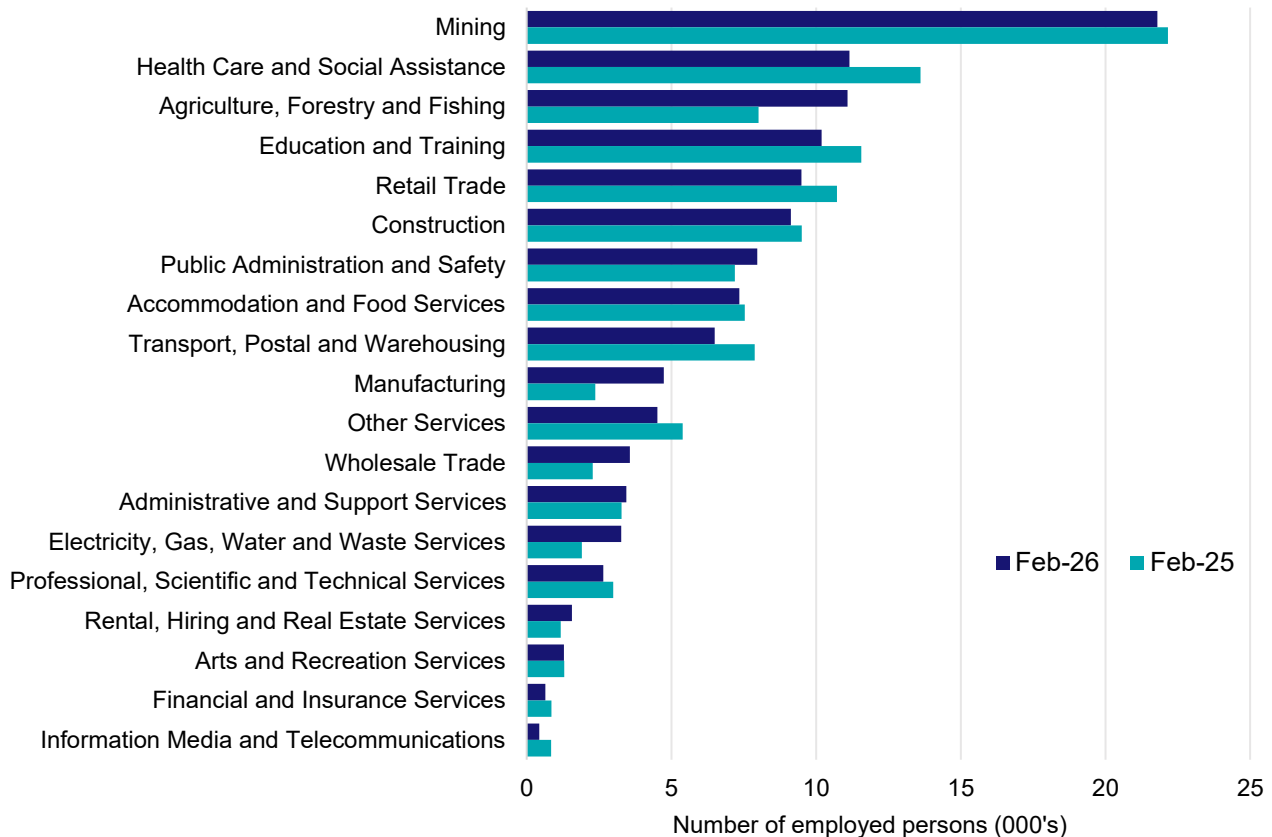
In February 2026, there were around 120,800 people employed in the Broome Employment Region. The 5 largest employing industries in the region were Mining, Health Care and Social Assistance, Agriculture, Forestry and Fishing, Education and Training, and Retail Trade. Together these 5 industries accounted for 53% of employment in the region.

Over the year to February 2026, employment in:

- Mining fell by 1.6% to stand at 21,800
- Health Care and Social Assistance fell by 18.0% to stand at 11,200
- Agriculture, Forestry and Fishing rose by 38.4% to stand at 11,100.

In Mining in the Broome Employment Region, 94% of workers were employed full-time; 73% were male; and the median age of the workforce was 38.

### Employment by industry, February 2026 and February 2025



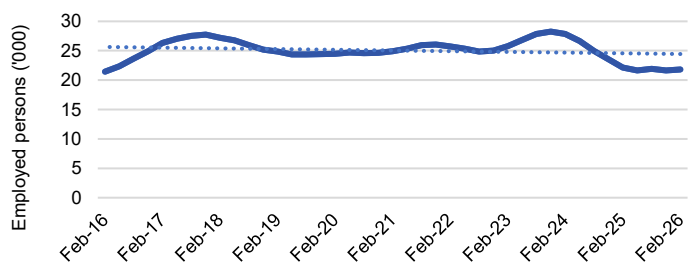
Source: ABS Labour Force Survey\*, Detailed, four quarter averages, February 2026. Note that total employment for the region (four quarter averaged data) will not match data published in the Employment Region Labour Market dashboards (modelled estimates).

\*ABS Labour Force Survey data are based on the Western Australia - Outback (North and South) SA4. This SA4 is very large and covers much of regional and remote WA and is not a good fit for this Employment Region, but is the only data readily available.

**Notes: Data are the latest available. A high degree of caution should be exercised when interpreting data at the regional level, particularly in regards to percentage changes, given the volatility of the underlying data. For any enquiries related to the data in this report, please contact [RegionalWorkforceAssessment@jobsandskills.gov.au](mailto:RegionalWorkforceAssessment@jobsandskills.gov.au)**

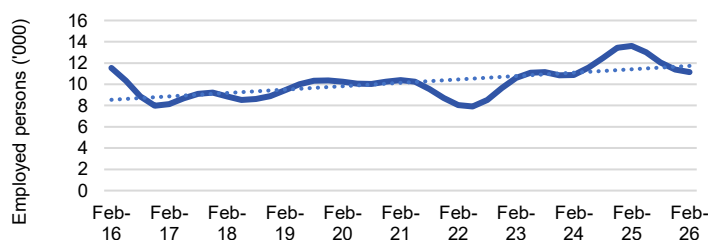
# Five largest employing industries: key statistics

## Mining



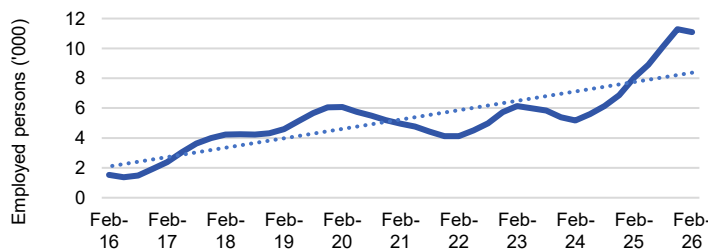
Number employed (Feb-26):	21,800
1 year employment change:	-1.6%
5 year employment change:	-12.5%
10 year employment change:	1.7%
Youth share of employment:	2.0%
Mature age share of employment:	2.4%

## Health Care and Social Assistance



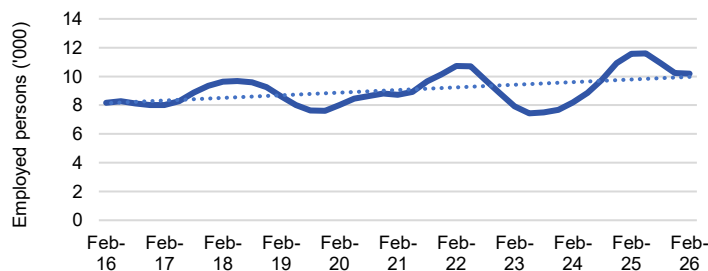
Number employed (Feb-26):	11,200
1 year employment change:	-18.0%
5 year employment change:	7.2%
10 year employment change:	-3.3%
Youth share of employment:	14.3%
Mature age share of employment:	21.1%

## Agriculture, Forestry and Fishing



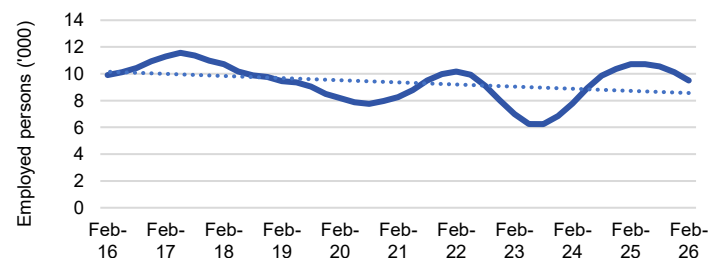
Number employed (Feb-26):	11,100
1 year employment change:	38.4%
5 year employment change:	123.7%
10 year employment change:	625.0%
Youth share of employment:	3.0%
Mature age share of employment:	2.0%

## Education and Training



Number employed (Feb-26):	10,200
1 year employment change:	-11.9%
5 year employment change:	16.7%
10 year employment change:	24.8%
Youth share of employment:	6.4%
Mature age share of employment:	12.3%

## Retail Trade



Number employed (Feb-26):	9,500
1 year employment change:	-11.5%
5 year employment change:	14.8%
10 year employment change:	-4.2%
Youth share of employment:	21.7%
Mature age share of employment:	10.2%

Source: ABS Labour Force Survey, Detailed, four quarter averages, February 2026, except youth and mature age data which are from the ABS Census of Population and Housing, 2021.

**Notes:** In each chart, the solid line is the level of employment and the dotted line is a simple linear trend line for the 10 year period. Given the volatility of the underlying data, employment estimates should be treated with a high degree of caution. Particular focus should be placed on the employment series over time to ascertain more reliable long-term growth trends.

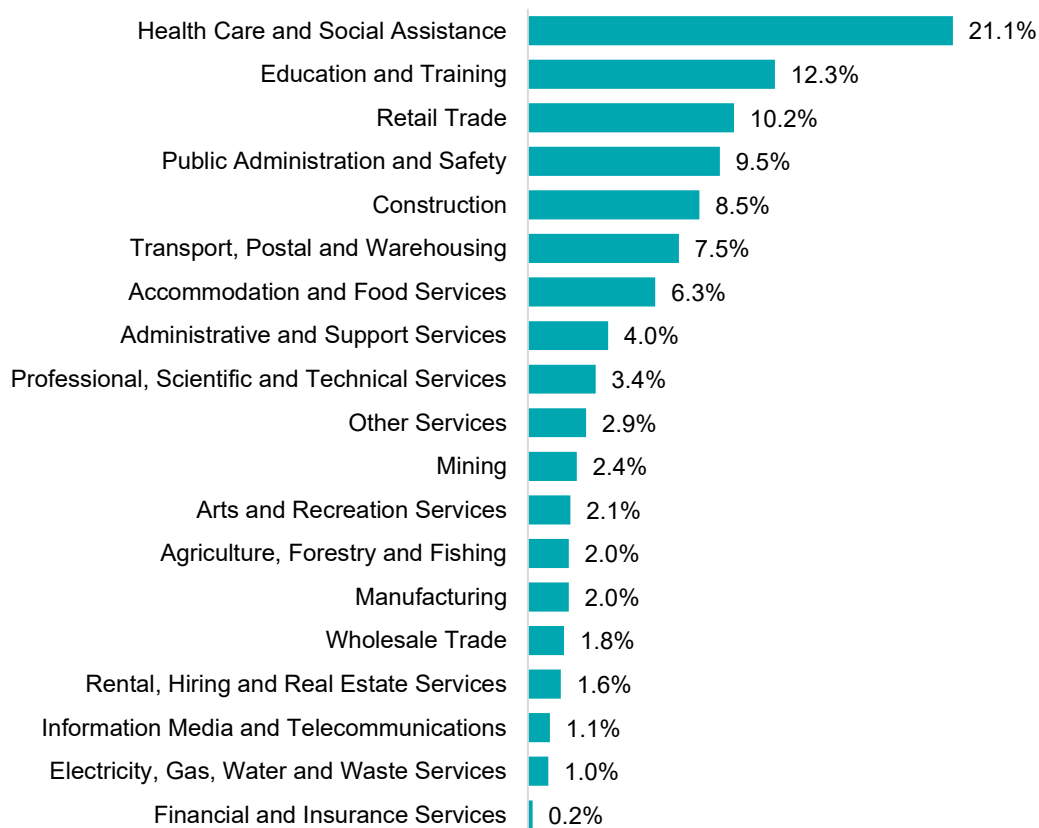
## Employment characteristics by Industry

### Which industries are youth (aged 15-24) employed in?



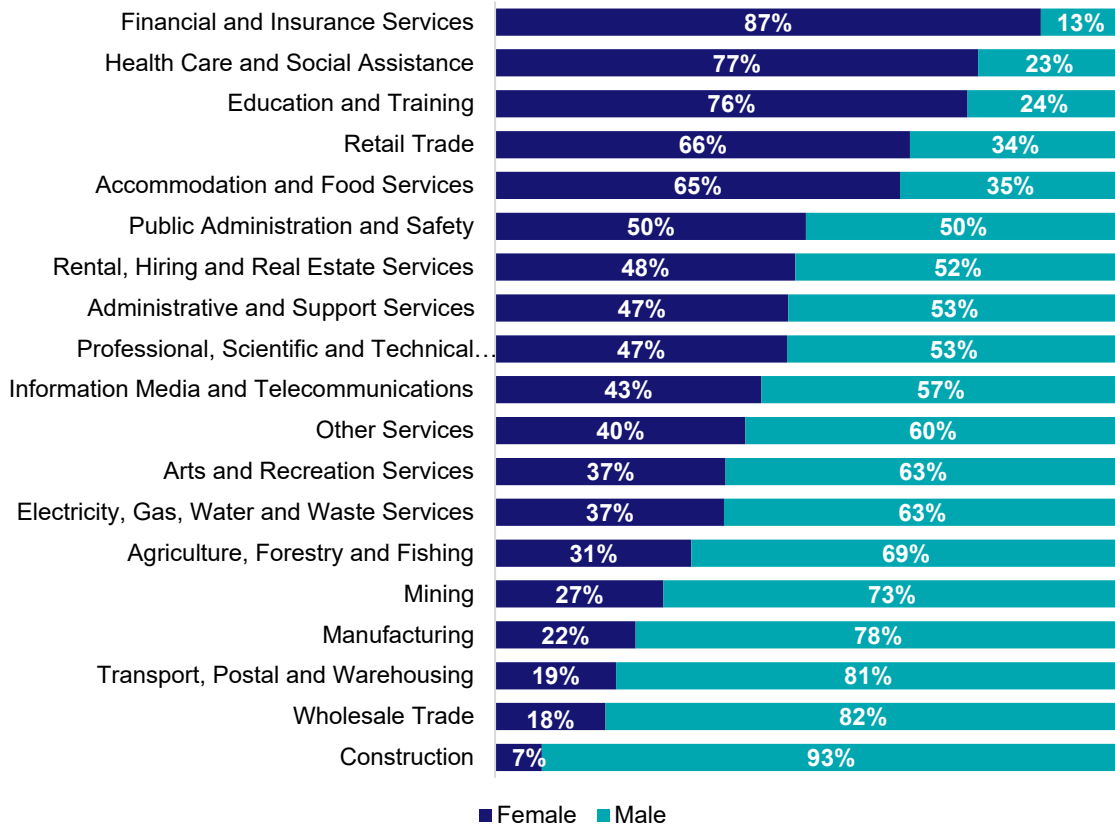
Source: ABS Census of Population and Housing, 2021.

### Which industries are mature age persons (aged 55+) employed in?



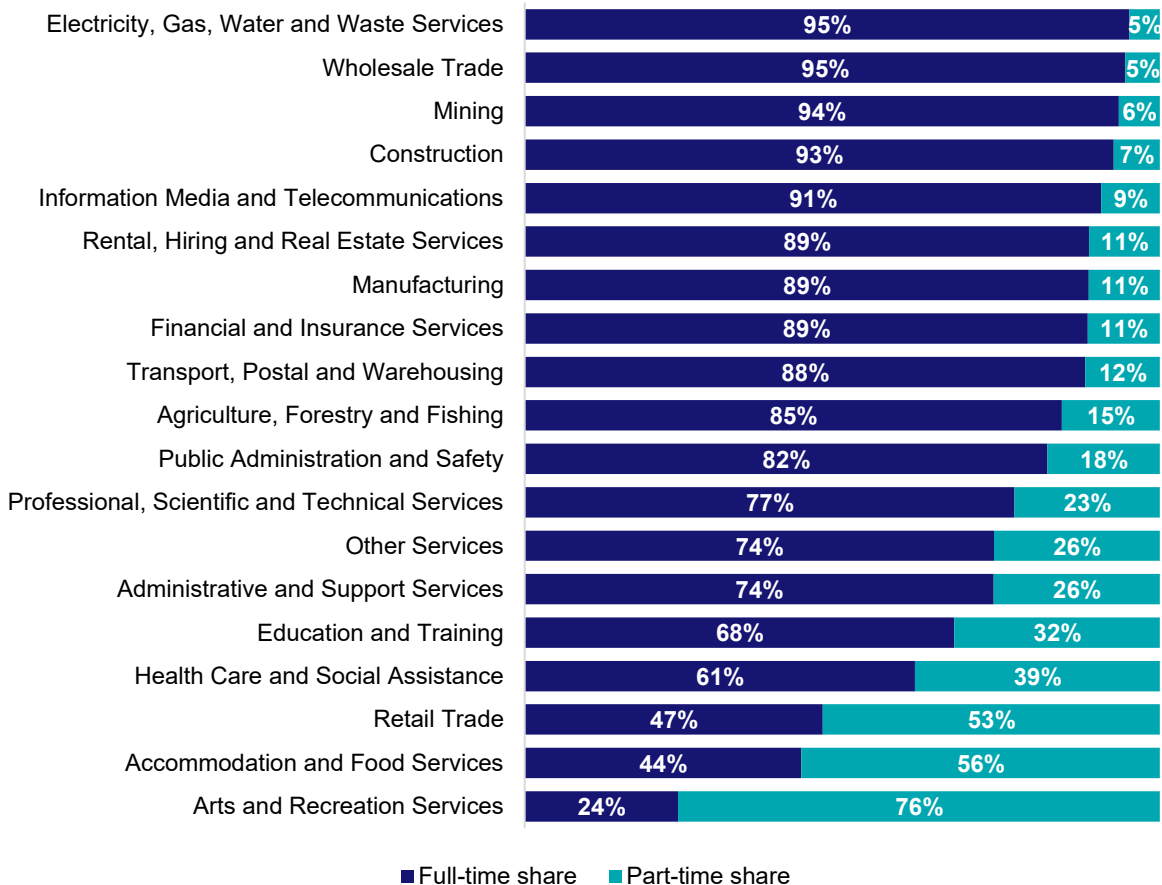
Source: ABS Census of Population and Housing, 2021. Note: SA2 level Census data have been aggregated to the Employment Region level.

## Gender share by industry



Source: ABS Labour Force Survey, Detailed, four quarter averages, February 2026.

## Full-time and part-time employment status by industry



Source: ABS Labour Force Survey, Detailed, four quarter averages, February 2026.

## Appendix

### Employment by industry, Broome, February 2026

Industry (in order of size)	Share of employment in the region Feb-26 (%)	Employed ('000)			Full-time share %	Part-time share %	Median age *
		Feb-26	Feb-25	Feb-21			
Mining	18.1	21.8	22.2	24.9	93.6	6.4	38
Health Care and Social Assistance	9.2	11.2	13.6	10.4	61.4	38.6	39
Agriculture, Forestry and Fishing	9.2	11.1	8.0	5.0	84.6	15.4	35
Education and Training	8.4	10.2	11.6	8.7	67.7	32.3	42
Retail Trade	7.9	9.5	10.7	8.3	46.9	53.1	38
Construction	7.6	9.1	9.5	9.7	92.7	7.3	42
Public Administration and Safety	6.6	8.0	7.2	10.4	82.3	17.7	43
Accommodation and Food Services	6.1	7.4	7.5	5.6	43.6	56.4	31
Transport, Postal and Warehousing	5.4	6.5	7.9	5.3	88.3	11.7	39
Manufacturing	3.9	4.7	2.4	3.6	88.8	11.2	35
Other Services	3.7	4.5	5.4	4.2	73.9	26.1	38
Wholesale Trade	2.9	3.6	2.3	1.8	94.6	5.4	50
Administrative and Support Services	2.8	3.4	3.3	3.3	73.8	26.2	43
Electricity, Gas, Water and Waste Services	2.7	3.3	1.9	2.2	95.2	4.8	43
Professional, Scientific and Technical Services	2.2	2.6	3.0	4.7	77.1	22.9	43
Rental, Hiring and Real Estate Services	1.3	1.6	1.2	1.9	88.9	11.1	43
Arts and Recreation Services	1.1	1.3	1.3	1.9	24.2	75.8	39
Financial and Insurance Services	0.5	0.6	0.9	1.1	88.7	11.3	44
Information Media and Telecommunications	0.4	0.4	0.8	0.7	90.8	9.2	38
<b>All industries</b>	<b>100.0</b>	<b>120.8</b>	<b>120.6</b>	<b>113.8</b>	<b>77.2</b>	<b>22.8</b>	<b>40</b>

Source: ABS Labour Force Survey, Detailed, four quarter averages, February 2026. \*Median age is from the ABS Census of Population and Housing, 2021. Median age has been derived using aggregated SA2s for the Employment Region.

**Note: Small cells should be viewed with caution due to small sample sizes and regional volatility.**