



Employment Region Industry profile

Ballarat Employment Region

Date of publishing: 15 April 2026

Overview

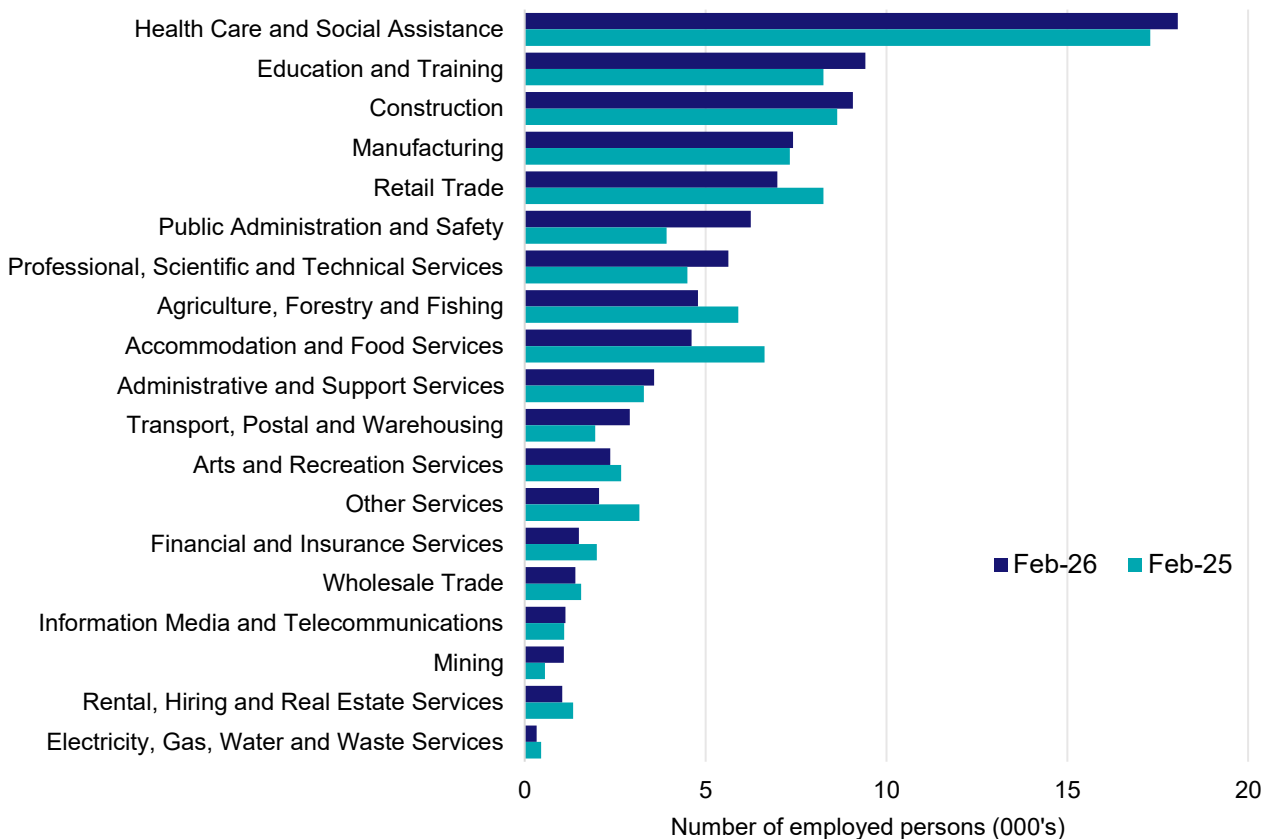
In February 2026, there were around 89,600 people employed in the Ballarat Employment Region. The 5 largest employing industries in the region were Health Care and Social Assistance, Education and Training, Construction, Manufacturing, and Retail Trade. Together these 5 industries accounted for 57% of employment in the region.

Over the year to February 2026, employment in:

- Health Care and Social Assistance rose by 4.4% to stand at 18,100
- Education and Training rose by 14.0% to stand at 9,400
- Construction rose by 5.1% to stand at 9,100.

In Health Care and Social Assistance in the Ballarat Employment Region, 55% of workers were employed full-time; 77% were female; and the median age of the workforce was 44.

Employment by industry, February 2026 and February 2025



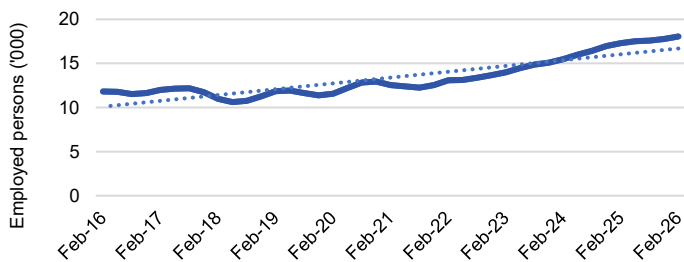
Source: ABS Labour Force Survey*, Detailed, four quarter averages, February 2026. Note that total employment for the region (four quarter averaged data) will not match data published in the Employment Region Labour Market dashboards (modelled estimates).

*ABS Labour Force Survey data are based on the Ballarat SA4.

Notes: Data are the latest available. A high degree of caution should be exercised when interpreting data at the regional level, particularly in regards to percentage changes, given the volatility of the underlying data. For any enquiries related to the data in this report, please contact RegionalWorkforceAssessment@jobsandskills.gov.au

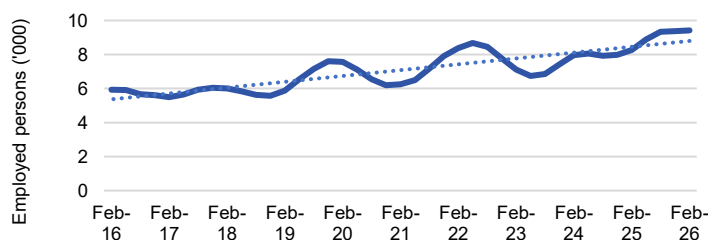
Five largest employing industries: key statistics

Health Care and Social Assistance



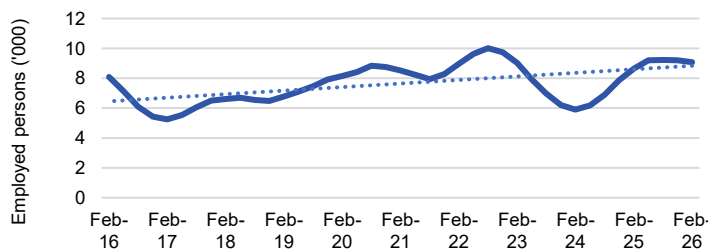
Number employed (Feb-26):	18,100
1 year employment change:	4.4%
5 year employment change:	43.9%
10 year employment change:	52.7%
Youth share of employment:	11.0%
Mature age share of employment:	19.9%

Education and Training



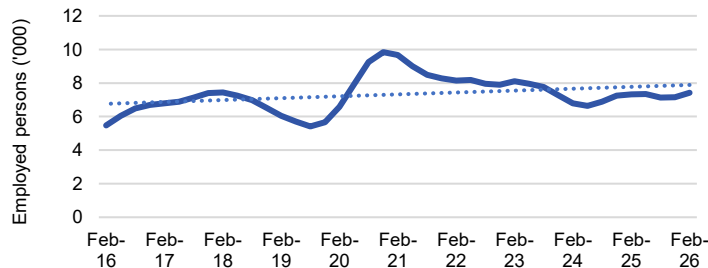
Number employed (Feb-26):	9,400
1 year employment change:	14.0%
5 year employment change:	50.7%
10 year employment change:	58.6%
Youth share of employment:	4.9%
Mature age share of employment:	10.8%

Construction



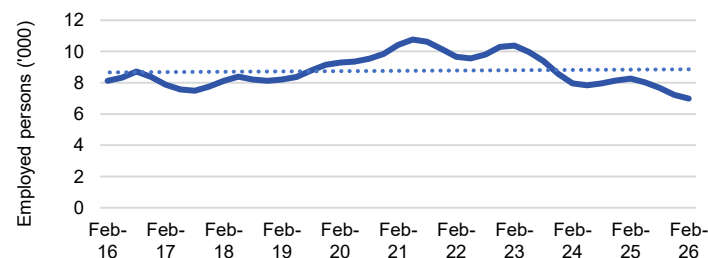
Number employed (Feb-26):	9,100
1 year employment change:	5.1%
5 year employment change:	6.5%
10 year employment change:	12.4%
Youth share of employment:	12.5%
Mature age share of employment:	8.0%

Manufacturing



Number employed (Feb-26):	7,400
1 year employment change:	1.3%
5 year employment change:	-23.2%
10 year employment change:	35.7%
Youth share of employment:	6.1%
Mature age share of employment:	8.3%

Retail Trade



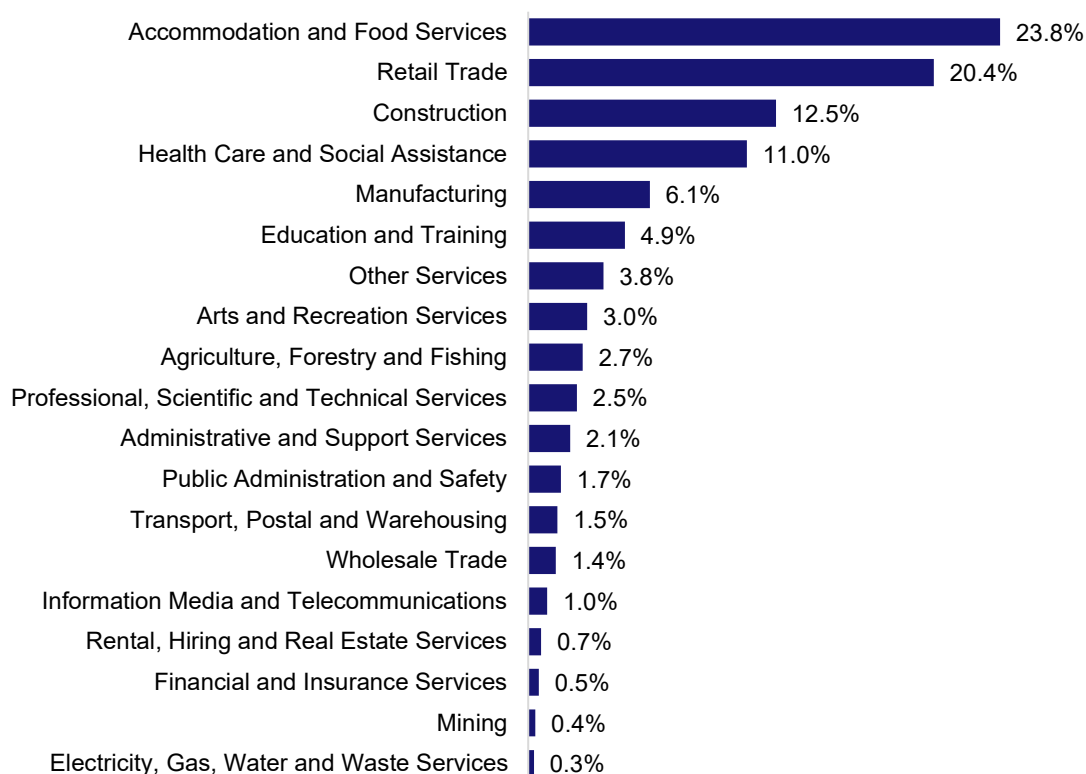
Number employed (Feb-26):	7,000
1 year employment change:	-15.4%
5 year employment change:	-33.0%
10 year employment change:	-14.0%
Youth share of employment:	20.4%
Mature age share of employment:	7.9%

Source: ABS Labour Force Survey, Detailed, four quarter averages, February 2026, except youth and mature age data which are from the ABS Census of Population and Housing, 2021.

Notes: In each chart, the solid line is the level of employment and the dotted line is a simple linear trend line for the 10 year period. Given the volatility of the underlying data, employment estimates should be treated with a high degree of caution. Particular focus should be placed on the employment series over time to ascertain more reliable long-term growth trends.

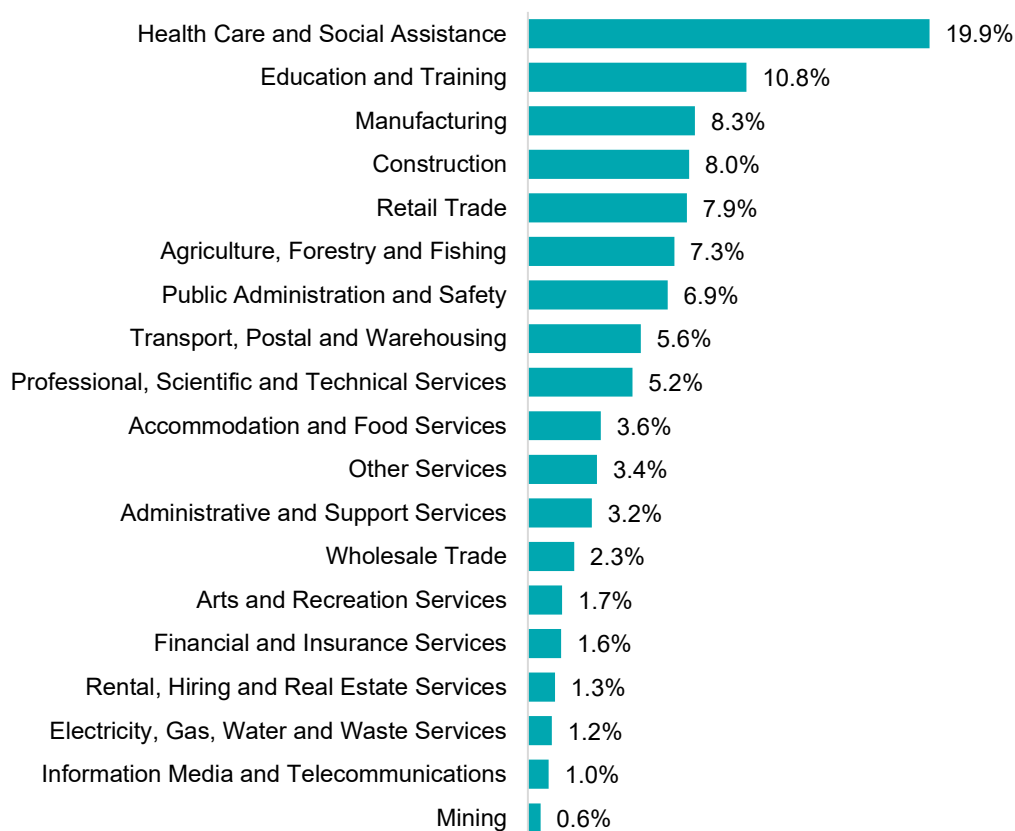
Employment characteristics by Industry

Which industries are youth (aged 15-24) employed in?



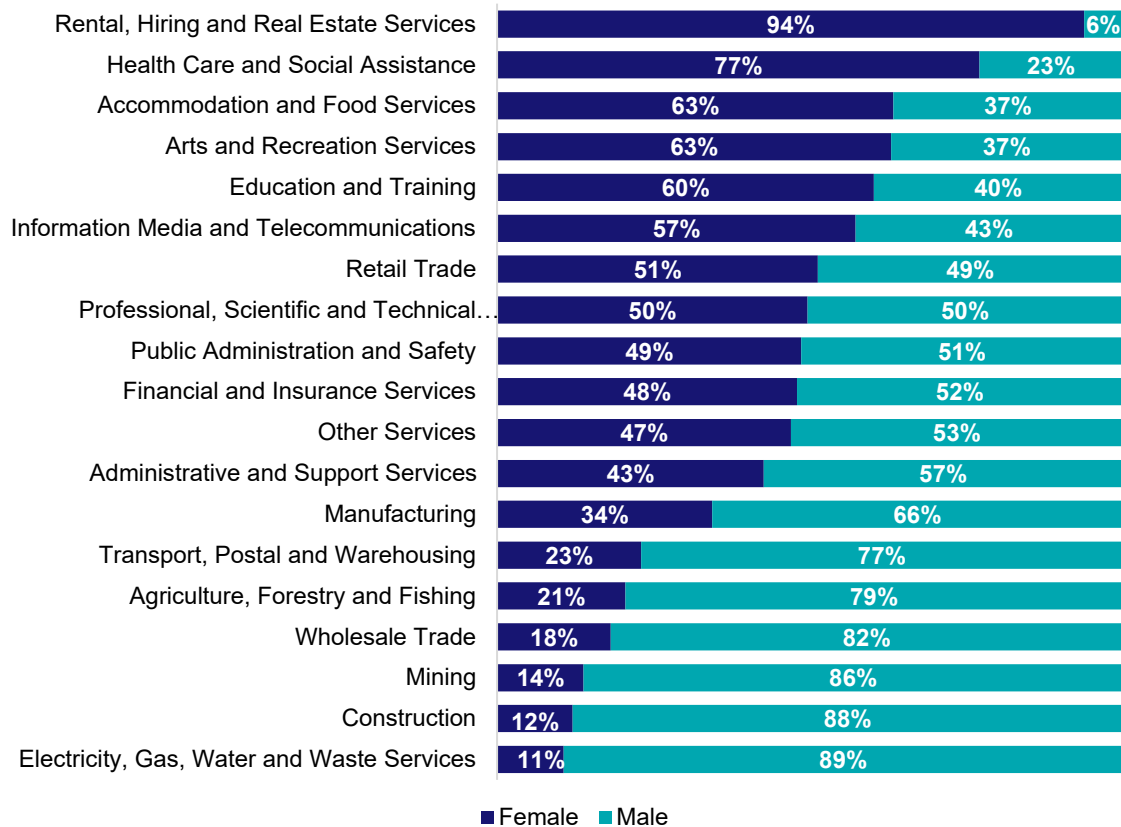
Source: ABS Census of Population and Housing, 2021.

Which industries are mature age persons (aged 55+) employed in?



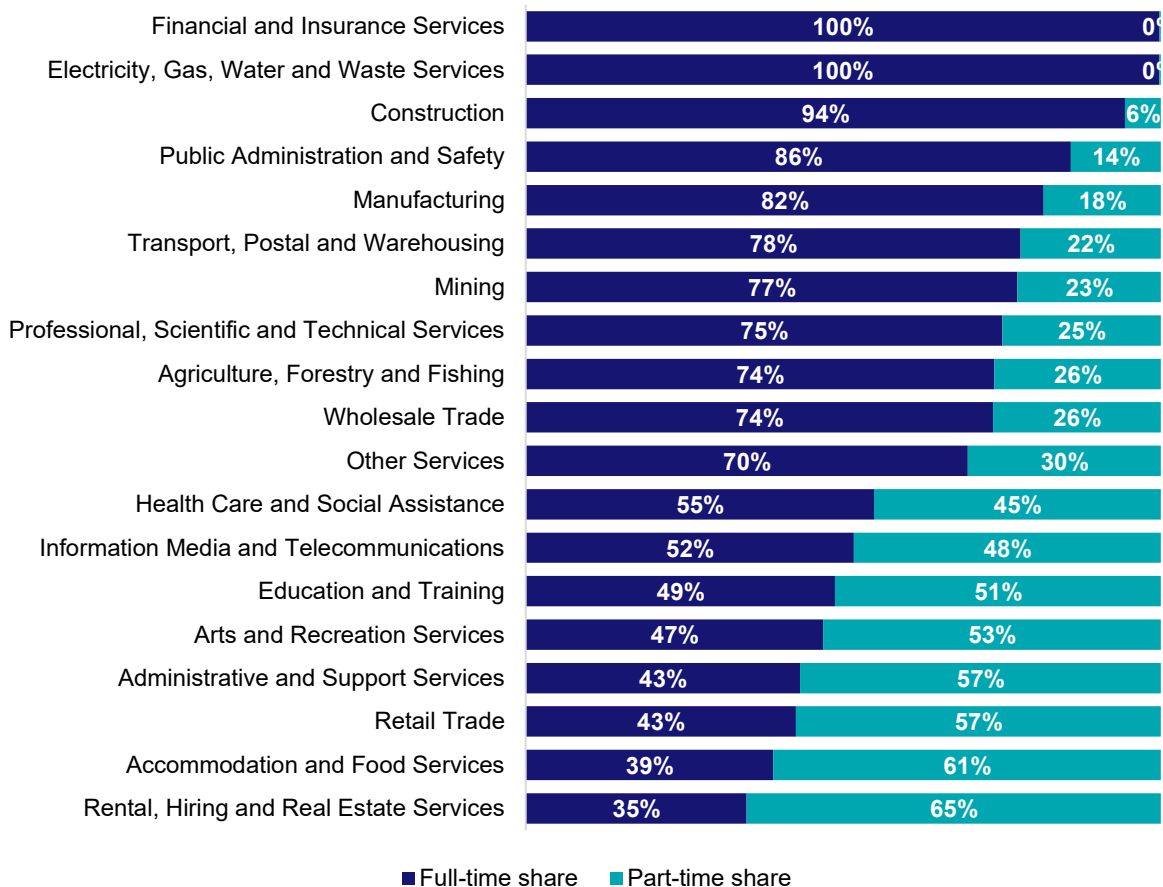
Source: ABS Census of Population and Housing, 2021. Note: SA2 level Census data have been aggregated to the Employment Region level.

Gender share by industry



Source: ABS Labour Force Survey, Detailed, four quarter averages, February 2026.

Full-time and part-time employment status by industry



Source: ABS Labour Force Survey, Detailed, four quarter averages, February 2026.

Appendix

Employment by industry, Ballarat, February 2026

Industry (in order of size)	Share of employment in the region Feb-26 (%)	Employed ('000)			Full-time share %	Part-time share %	Median age *
		Feb-26	Feb-25	Feb-21			
Health Care and Social Assistance	20.1	18.1	17.3	12.5	54.8	45.2	44
Education and Training	10.5	9.4	8.3	6.2	48.7	51.3	44
Construction	10.1	9.1	8.6	8.5	94.4	5.6	37
Manufacturing	8.3	7.4	7.3	9.7	81.6	18.4	45
Retail Trade	7.8	7.0	8.3	10.4	42.5	57.5	35
Public Administration and Safety	7.0	6.3	3.9	4.9	85.9	14.1	45
Professional, Scientific and Technical Services	6.3	5.6	4.5	4.6	75.1	24.9	43
Agriculture, Forestry and Fishing	5.3	4.8	5.9	2.8	73.8	26.2	51
Accommodation and Food Services	5.1	4.6	6.6	4.9	39.0	61.0	24
Administrative and Support Services	4.0	3.6	3.3	2.3	43.2	56.8	44
Transport, Postal and Warehousing	3.2	2.9	1.9	2.4	78.0	22.0	48
Arts and Recreation Services	2.6	2.4	2.7	2.2	46.8	53.2	37
Other Services	2.3	2.1	3.2	2.8	69.6	30.4	39
Financial and Insurance Services	1.7	1.5	2.0	1.4	99.8	0.2	45
Wholesale Trade	1.6	1.4	1.6	1.1	73.6	26.4	46
Information Media and Telecommunications	1.3	1.1	1.1	1.1	51.7	48.3	41
Mining	1.2	1.1	0.6	0.4	77.4	22.6	38
Rental, Hiring and Real Estate Services	1.2	1.0	1.3	2.1	34.8	65.2	42
Electricity, Gas, Water and Waste Services	0.4	0.3	0.5	0.5	99.8	0.2	45
All industries	100.0	89.6	88.8	81.0	64.7	35.3	42

Source: ABS Labour Force Survey, Detailed, four quarter averages, February 2026. *Median age is from the ABS Census of Population and Housing, 2021. Median age has been derived using aggregated SA2s for the Employment Region.

Note: Small cells should be viewed with caution due to small sample sizes and regional volatility.