



# Industry profile Australia

Release date: 15 April 2026

## Overview

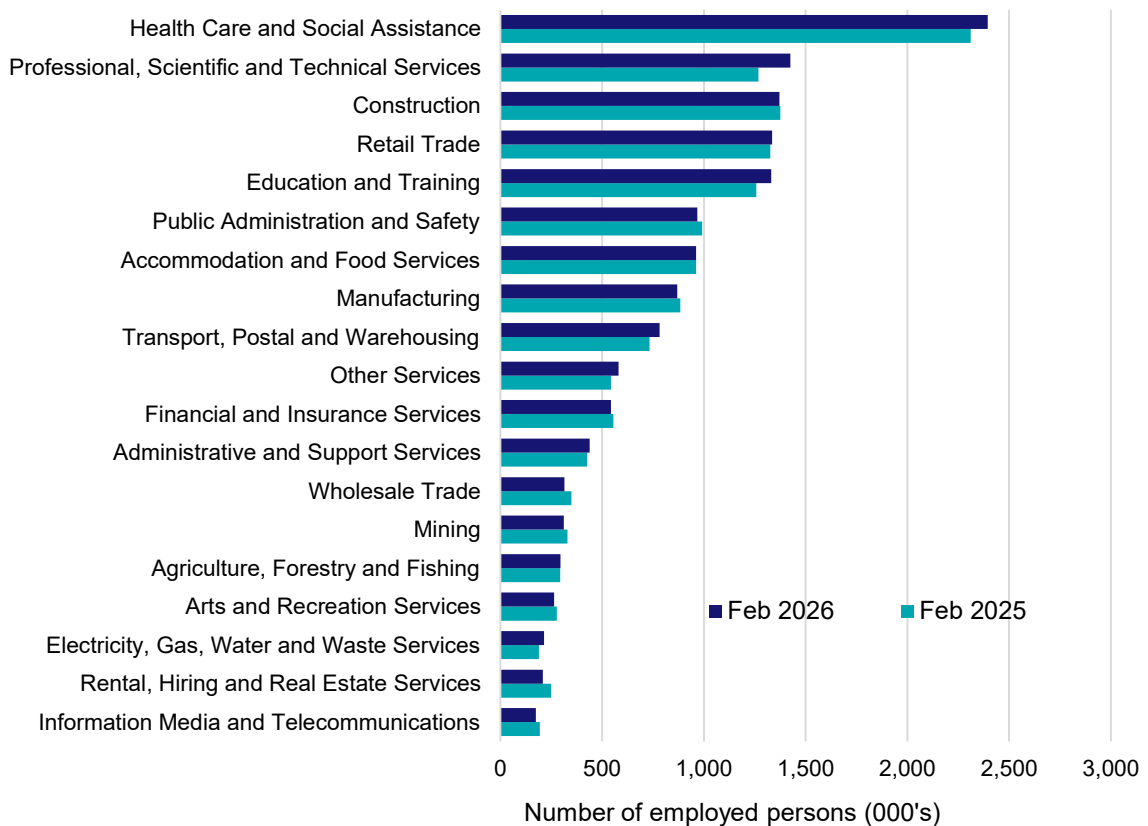
In February 2026, there were around 14,771,900 people employed in Australia. The 5 largest employing industries nationally were Health Care and Social Assistance, Professional, Scientific and Technical Services, Construction, Retail Trade and Education and Training. Together these 5 industries accounted for 53% of all employment.

Over the year to February 2026, employment in:

- Health Care and Social Assistance rose by 3.6% to stand at 2,394,400
- Professional, Scientific and Technical Services rose by 12.4% to stand at 1,424,900
- Construction fell by 0.4% to stand at 1,370,600.

In Health Care and Social Assistance, nationally, 56% of workers were employed full-time; 76% were Female; and the median age of the workforce was 42.

## Employment by industry, February 2026 and February 2025

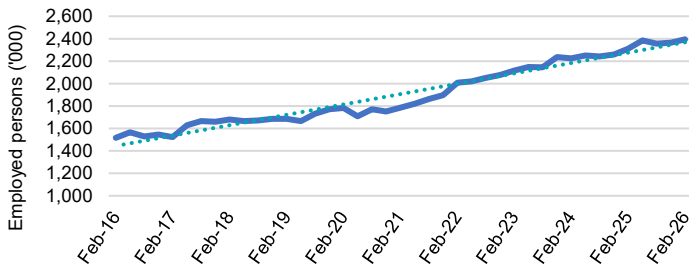


Source: ABS Labour Force Survey, Detailed, four quarter averages for full-time/part-time and gender data; ABS Labour Force Survey, Detailed, seasonally adjusted data, February 2026.

Note: For any enquiries related to the data in this report, contact [RegionalWorkforceAssessment@jobsandskills.gov.au](mailto:RegionalWorkforceAssessment@jobsandskills.gov.au)

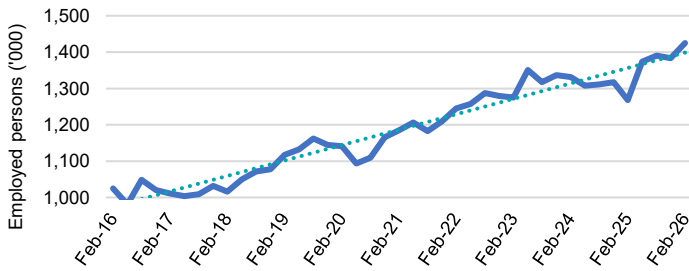
## Five largest employing industries: key statistics

### Health Care and Social Assistance



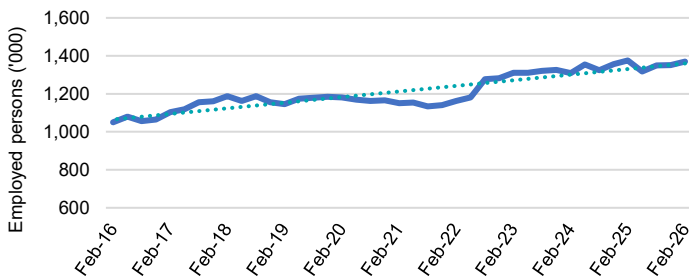
Number employed (Feb-26):	2,394,400
1 year employment change:	3.6%
5 year employment change:	34.1%
10 year employment change:	57.9%
Youth share of employment:	10.2%
Mature age share of employment:	17.2%

### Professional, Scientific and Technical Services



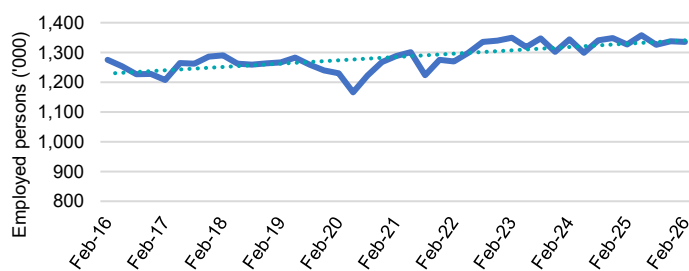
Number employed (Feb-26):	1,424,900
1 year employment change:	12.4%
5 year employment change:	20.2%
10 year employment change:	39.1%
Youth share of employment:	4.7%
Mature age share of employment:	7.2%

### Construction



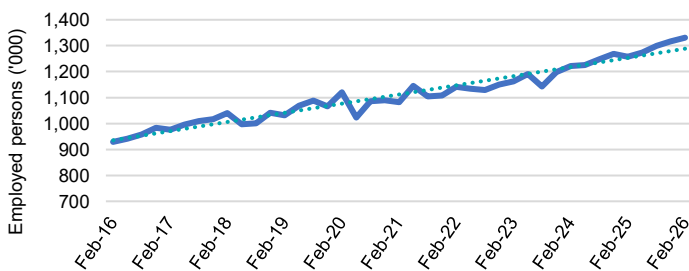
Number employed (Feb-26):	1,370,600
1 year employment change:	-0.4%
5 year employment change:	19.1%
10 year employment change:	30.5%
Youth share of employment:	9.5%
Mature age share of employment:	8.0%

### Retail Trade



Number employed (Feb-26):	1,335,800
1 year employment change:	0.7%
5 year employment change:	3.7%
10 year employment change:	4.7%
Youth share of employment:	20.2%
Mature age share of employment:	7.6%

### Education and Training



Number employed (Feb-26):	1,330,800
1 year employment change:	5.9%
5 year employment change:	22.9%
10 year employment change:	43.3%
Youth share of employment:	5.9%
Mature age share of employment:	10.5%

Source: ABS Labour Force Survey, Detailed, seasonally adjusted data, February 2026, except youth and mature age data which are from the ABS Census of Population and Housing, 2021.

Note: In each chart, the solid line is the level of employment and the dotted line is a simple linear trend line for the 10 year period.

## Employment characteristics by Industry

### Which industries are youth (aged 15-24) employed in?



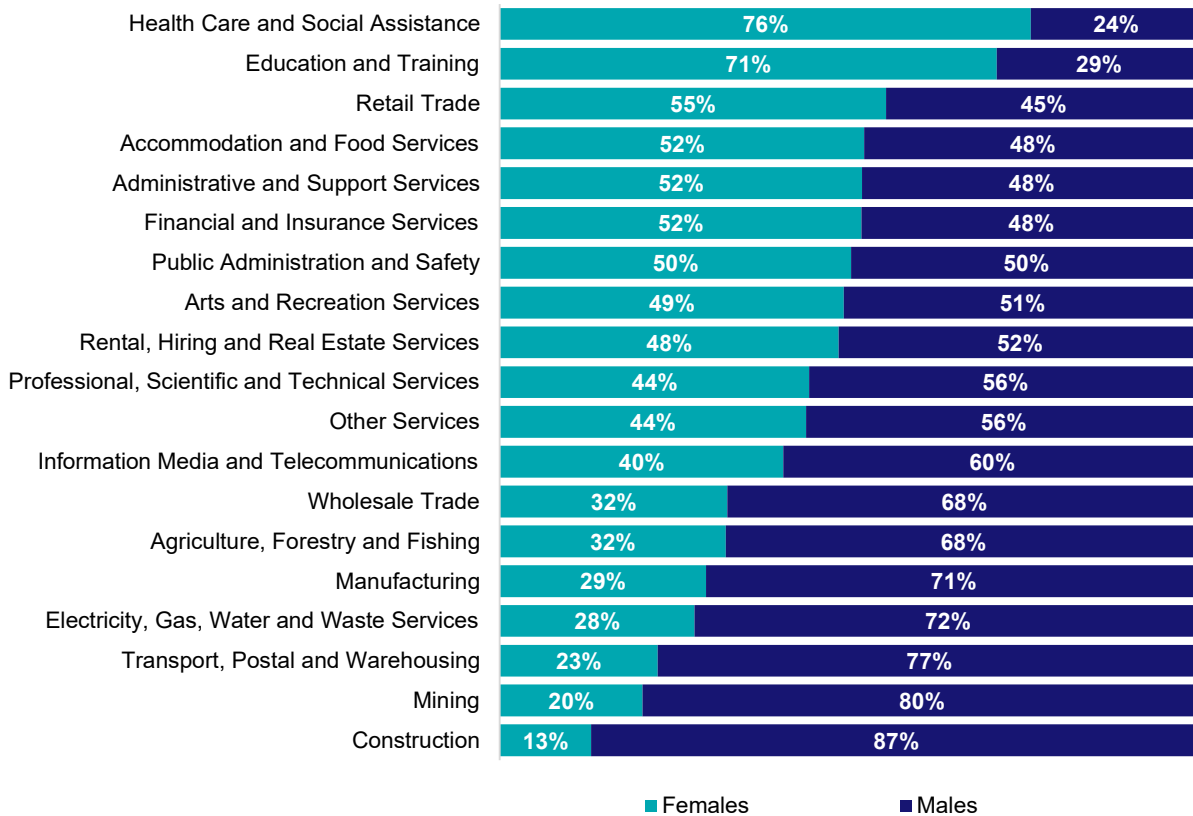
Source: ABS Census of Population and Housing, 2021.

### Which industries are mature age persons (aged 55+) employed in?



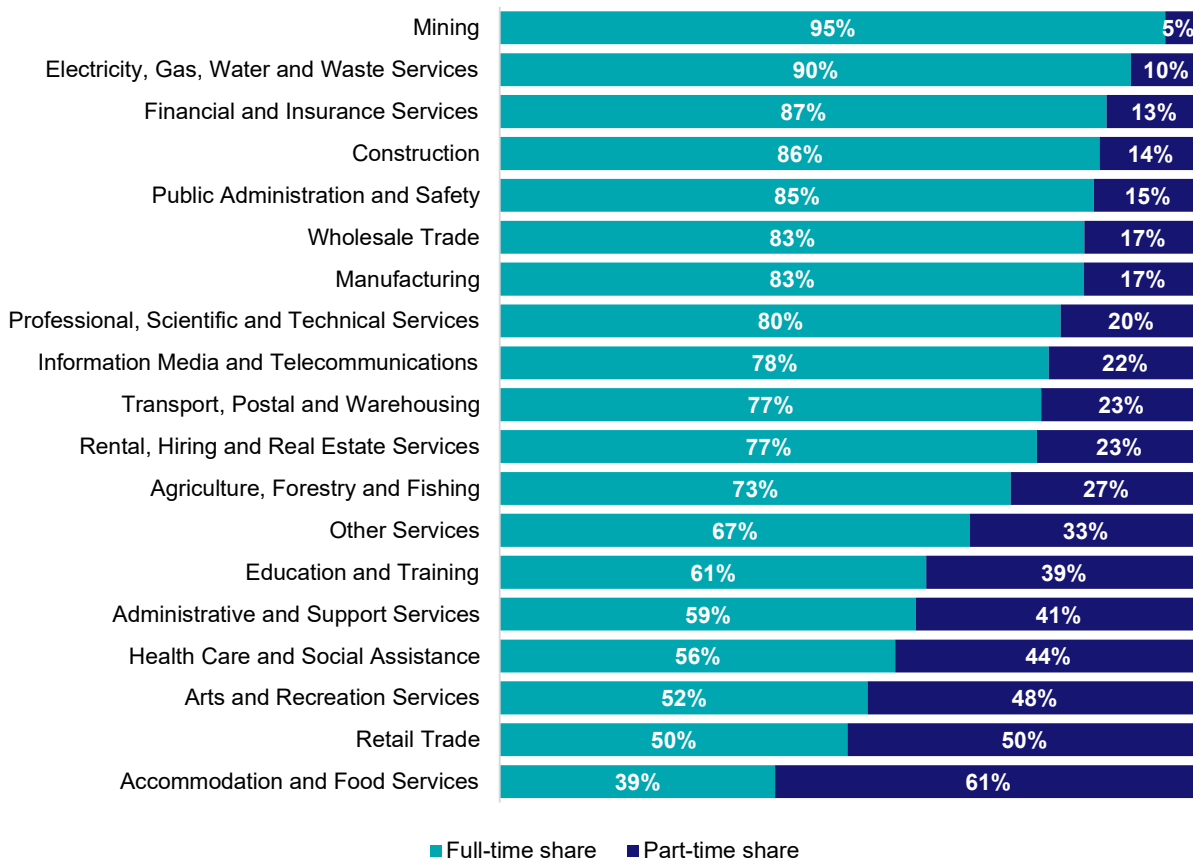
Source: ABS Census of Population and Housing, 2021.

## Gender share by industry



Source: ABS Labour Force Survey, Detailed, four quarter averages, February 2026.

## Full-time and part-time employment status by industry



Source: ABS Labour Force Survey, Detailed, four quarter averages, February 2026.

## Appendix

### Employment by industry, Australia, February 2026

Industry (in order of size)	Share of employment Feb-26 (%)	Share of emp't in Capital cities (%)	Share of emp't in regional areas (%)	Employed ('000)			1 year change		5 year change		Median age *
				Feb-26	Feb-25	Feb-21	('000)	%	('000)	%	
Health Care and Social Assistance	16.2	67.9	32.1	2,394.4	2,310.9	1,785.8	83.5	3.6	608.6	34.1	42
Professional, Scientific and Technical Services	9.6	83.0	17.0	1,424.9	1,268.2	1,185.3	156.7	12.4	239.7	20.2	40
Construction	9.3	68.6	31.4	1,370.6	1,375.8	1,150.9	-5.2	-0.4	219.7	19.1	38
Retail Trade	9.0	68.2	31.8	1,335.8	1,326.8	1,288.5	9.0	0.7	47.3	3.7	34
Education and Training	9.0	68.8	31.2	1,330.8	1,257.1	1,082.7	73.8	5.9	248.1	22.9	43
Public Administration and Safety	6.5	70.1	29.9	967.5	992.2	866.0	-24.7	-2.5	101.5	11.7	43
Accommodation and Food Services	6.5	67.6	32.4	962.2	961.9	836.6	0.3	0.0	125.6	15.0	27
Manufacturing	5.9	70.1	29.9	869.0	884.4	886.6	-15.4	-1.7	-17.6	-2.0	43
Transport, Postal and Warehousing	5.3	75.8	24.2	782.6	733.7	677.9	48.9	6.7	104.7	15.4	44
Other Services	3.9	67.5	32.5	581.1	543.9	502.5	37.3	6.9	78.6	15.6	39
Financial and Insurance Services	3.7	85.8	14.2	543.7	555.3	469.3	-11.6	-2.1	74.4	15.8	40
Administrative and Support Services	3.0	70.7	29.3	439.2	426.2	386.1	13.0	3.0	53.1	13.8	41
Wholesale Trade	2.1	75.9	24.1	314.9	348.4	389.6	-33.6	-9.6	-74.8	-19.2	44
Mining	2.1	52.3	47.7	311.9	329.1	275.4	-17.2	-5.2	36.5	13.3	41
Agriculture, Forestry and Fishing	2.0	19.7	80.3	294.9	294.0	333.5	0.9	0.3	-38.6	-11.6	49
Arts and Recreation Services	1.8	72.2	27.8	263.3	277.9	237.1	-14.5	-5.2	26.2	11.0	36
Electricity, Gas, Water and Waste Services	1.4	64.5	35.5	214.3	189.1	146.9	25.2	13.3	67.4	45.9	43
Rental, Hiring and Real Estate Services	1.4	74.7	25.3	208.9	248.6	206.6	-39.7	-16.0	2.3	1.1	42
Information Media and Telecommunications	1.2	82.2	17.8	174.4	193.5	194.6	-19.1	-9.9	-20.1	-10.4	39
<b>All Industries</b>	<b>100.0</b>	<b>70.1</b>	<b>29.9</b>	<b>14,771.9</b>	<b>14,506.6</b>	<b>12,916.0</b>	<b>265.2</b>	<b>1.8</b>	<b>1855.9</b>	<b>14.4</b>	<b>40</b>

Source: ABS Labour Force Survey, Detailed, February 2026. Data for Australia are seasonally adjusted. Greater Capital City and Rest of State data are four quarter averages. \*Median age is from the ABS Census of Population and Housing, 2021.