

# Employment Region Industry profile

## Western Melbourne Employment Region

Release date: 27 March 2025

### Overview

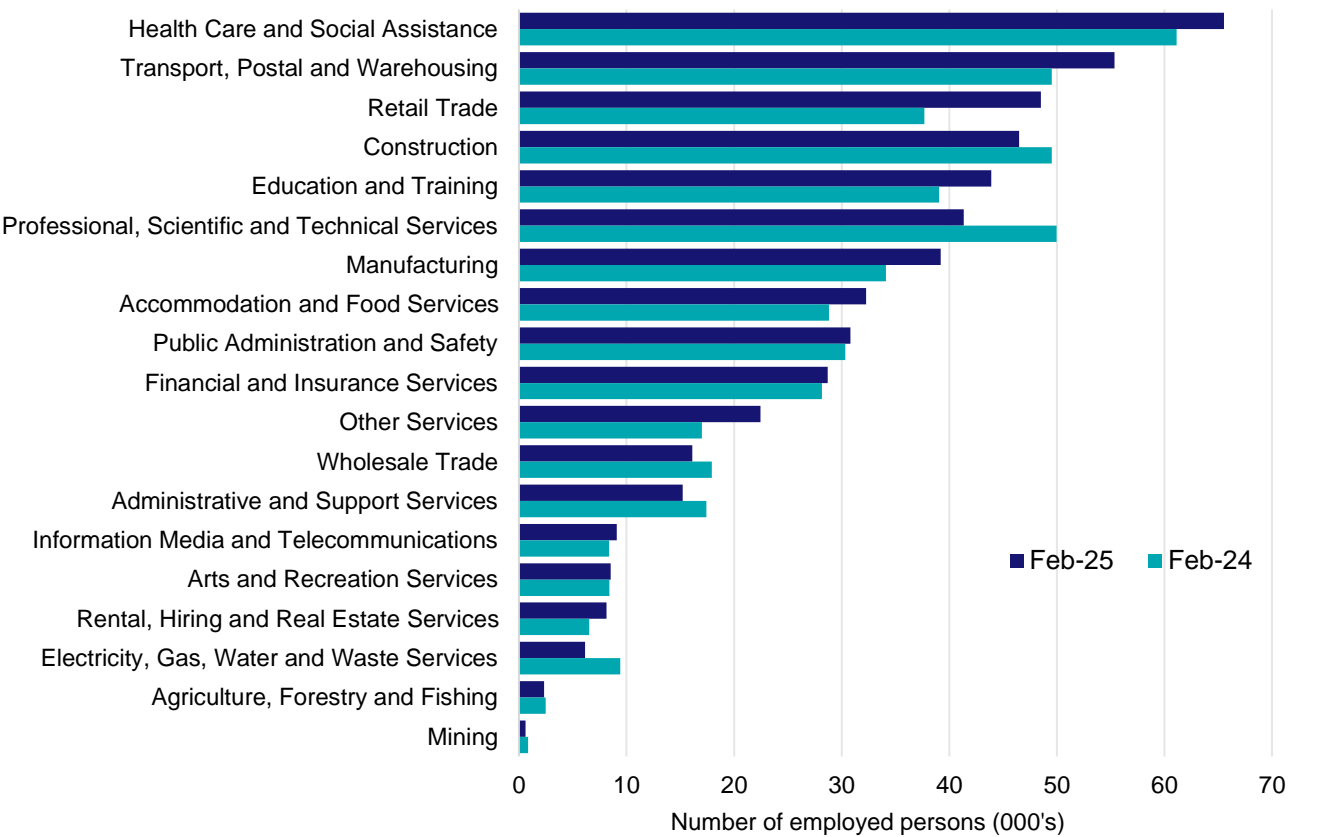
In February 2025, there were around 520,800 people employed in the Western Melbourne Employment Region. The 5 largest employing industries in the region were Health Care and Social Assistance, Transport, Postal and Warehousing, Retail Trade, Construction, and Education and Training. Together these 5 industries accounted for 50% of employment in the region.

Over the year to February 2025, employment in:

- Health Care and Social Assistance rose by 7.2% to stand at 65,500
- Transport, Postal and Warehousing rose by 11.8% to stand at 55,400
- Retail Trade rose by 28.8% to stand at 48,500.

In Health Care and Social Assistance in the Western Melbourne Employment Region, 56% of workers were employed full-time; 76% were female; and the median age of the workforce was 39.

### Employment by industry, February 2025 and February 2024



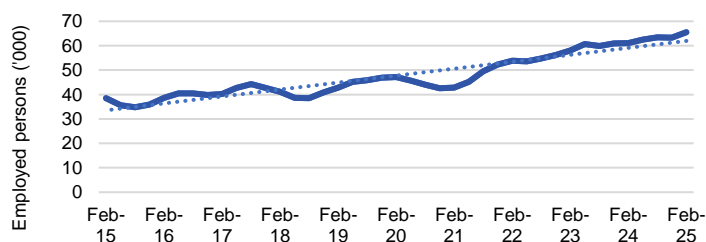
Source: ABS Labour Force Survey\*, Detailed, four quarter averages, February 2025. Note that total employment for the region (four quarter averaged data) will not match data published in the Employment Region Labour Market dashboards (modelled estimates).

\*ABS Labour Force Survey data are based on the Melbourne-West SA4.

**Notes:** Data are the latest available. A high degree of caution should be exercised when interpreting data at the regional level, particularly in regards to percentage changes, given the volatility of the underlying data. For any enquiries related to the data in this report, please contact [RegionalWorkforceAssessment@jobsandskills.gov.au](mailto:RegionalWorkforceAssessment@jobsandskills.gov.au)

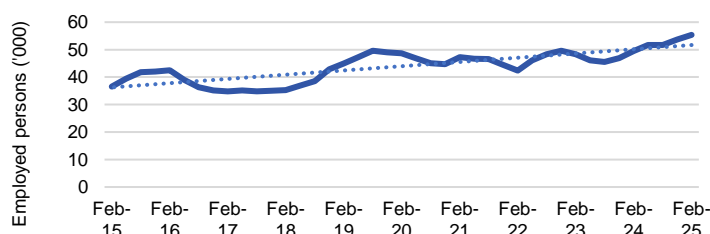
# Five largest employing industries: key statistics

## Health Care and Social Assistance



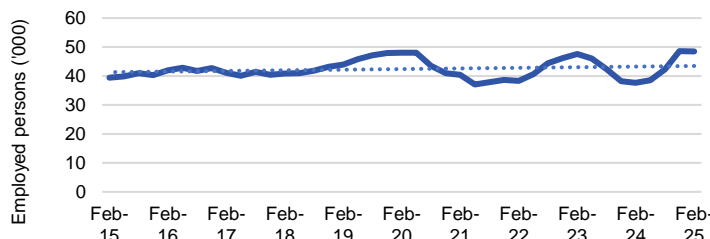
Number employed (Feb-25):	65,500
1 year employment change:	7.2%
5 year employment change:	38.8%
10 year employment change:	70.1%
Youth share of employment:	8.0%
Mature age share of employment:	13.7%

## Transport, Postal and Warehousing



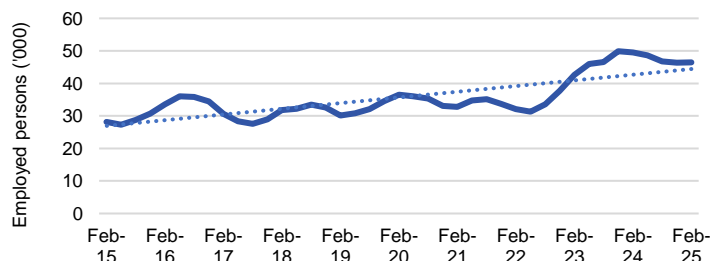
Number employed (Feb-25):	55,400
1 year employment change:	11.8%
5 year employment change:	13.6%
10 year employment change:	51.3%
Youth share of employment:	5.8%
Mature age share of employment:	11.7%

## Retail Trade



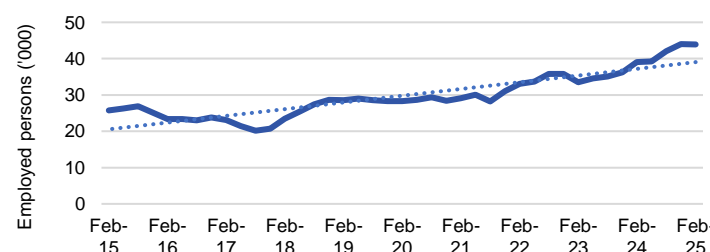
Number employed (Feb-25):	48,500
1 year employment change:	28.8%
5 year employment change:	1.1%
10 year employment change:	23.1%
Youth share of employment:	22.5%
Mature age share of employment:	8.0%

## Construction



Number employed (Feb-25):	46,500
1 year employment change:	-6.1%
5 year employment change:	27.3%
10 year employment change:	64.9%
Youth share of employment:	10.8%
Mature age share of employment:	8.3%

## Education and Training



Number employed (Feb-25):	43,900
1 year employment change:	12.4%
5 year employment change:	55.1%
10 year employment change:	70.6%
Youth share of employment:	5.3%
Mature age share of employment:	9.0%

Source: ABS Labour Force Survey, Detailed, four quarter averages, February 2025, except youth and mature age data which are from the ABS Census of Population and Housing, 2021.

**Notes:** In each chart, the solid line is the level of employment and the dotted line is a simple linear trend line for the 10 year period. Given the volatility of the underlying data, employment estimates should be treated with a high degree of caution. Particular focus should be placed on the employment series over time to ascertain more reliable long-term growth trends.

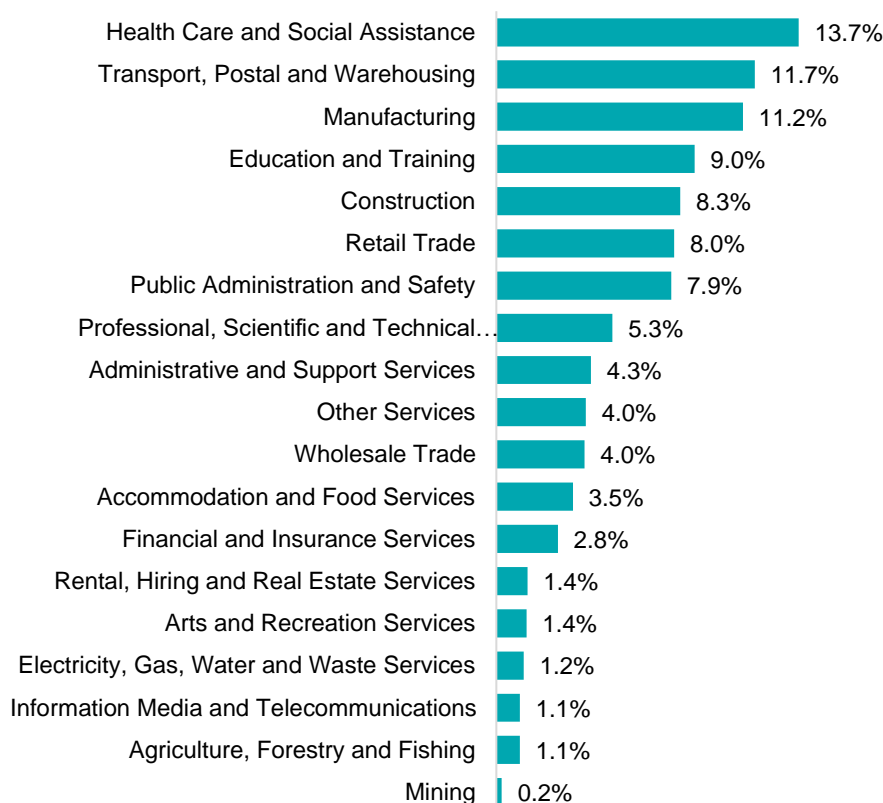
## Employment characteristics by Industry

### Which industries are youth (aged 15-24) employed in?



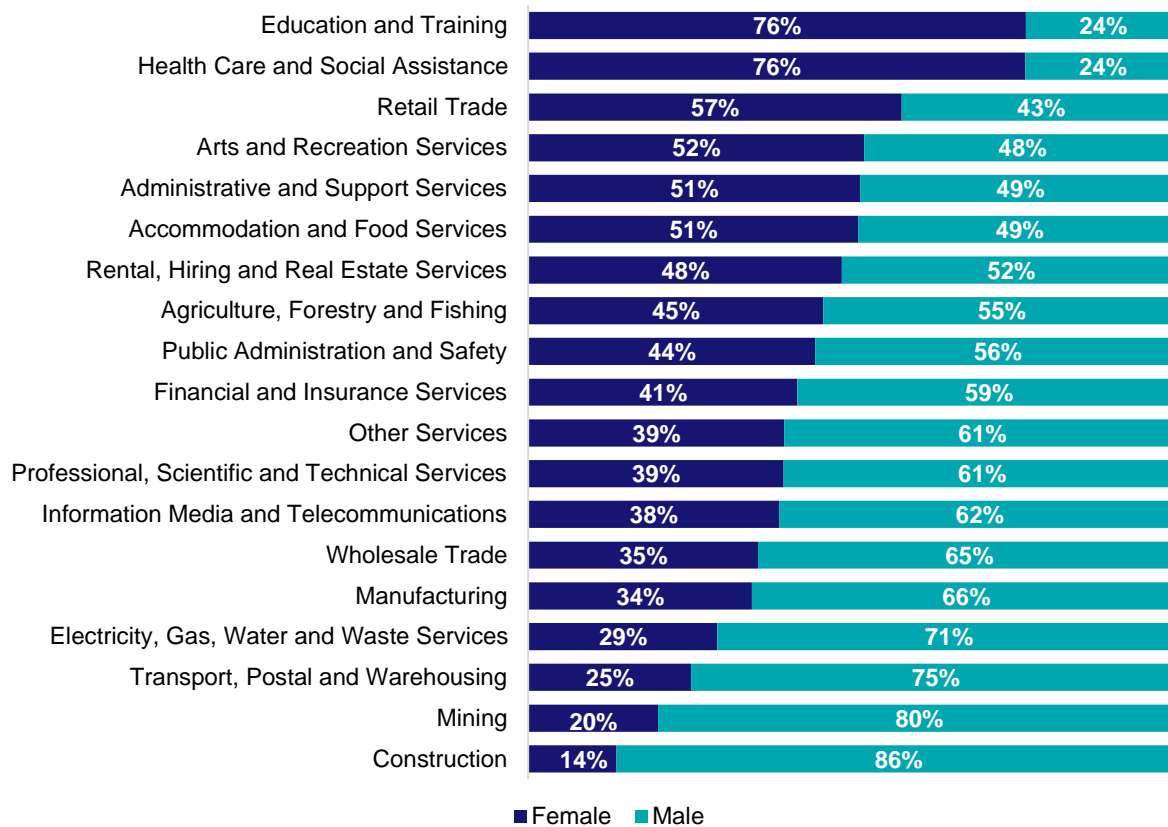
Source: ABS Census of Population and Housing, 2021.

### Which industries are mature age persons (aged 55+) employed in?



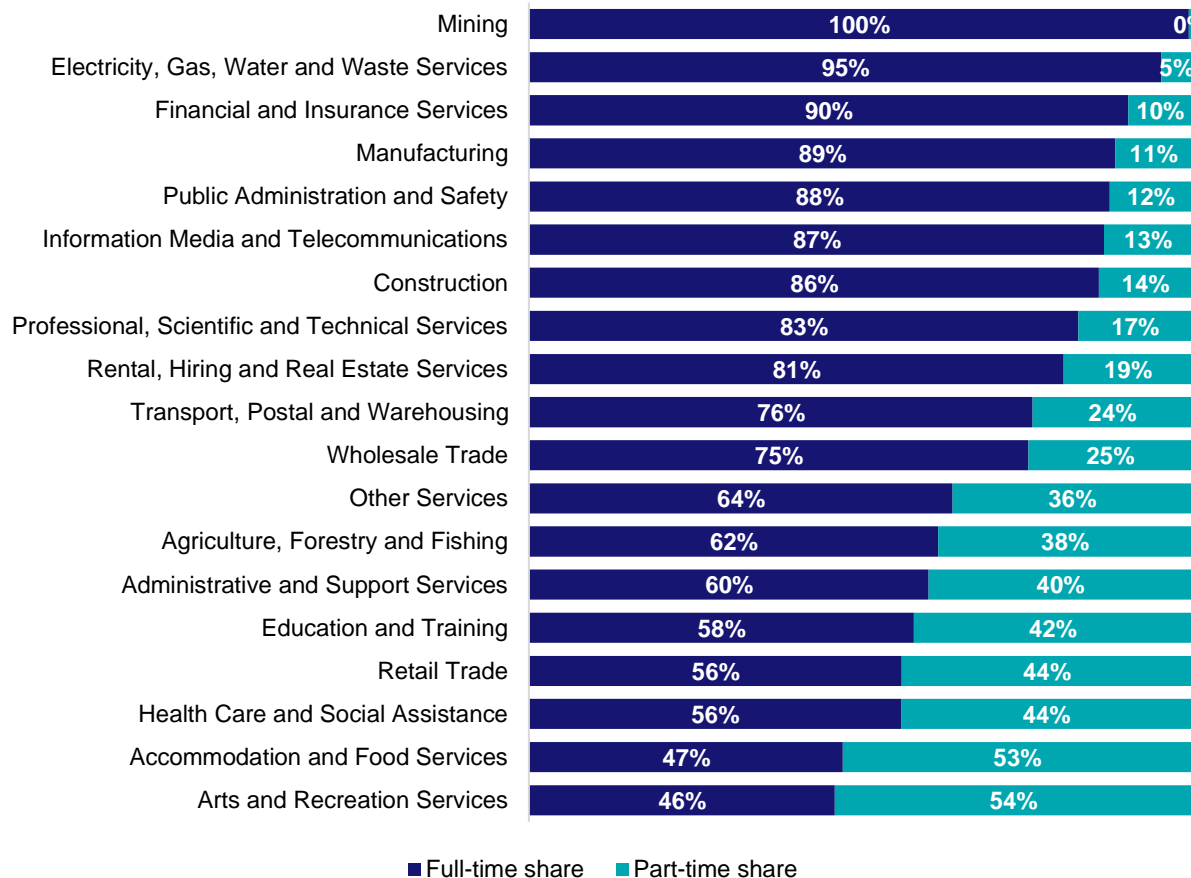
Source: ABS Census of Population and Housing, 2021. Note: SA2 level Census data have been aggregated to the Employment Region level.

## Gender share by industry



Source: ABS Labour Force Survey, Detailed, four quarter averages, February 2025.

## Full-time and part-time employment status by industry



Source: ABS Labour Force Survey, Detailed, four quarter averages, February 2025.

## Appendix

### Employment by industry, Western Melbourne, February 2025

Industry (in order of size)	Share of employment in the region Feb-25 (%)	Employed ('000)			Full-time share %	Part-time share %	Median age *
		Feb-25	Feb-24	Feb-20			
Health Care and Social Assistance	12.6	65.5	61.1	47.2	56.2	43.8	39
Transport, Postal and Warehousing	10.6	55.4	49.5	48.7	76.1	23.9	40
Retail Trade	9.3	48.5	37.7	48.0	56.3	43.7	33
Construction	8.9	46.5	49.5	36.5	86.1	13.9	36
Education and Training	8.4	43.9	39.1	28.3	58.1	41.9	40
Professional, Scientific and Technical Services	7.9	41.3	50.0	33.3	82.9	17.1	38
Manufacturing	7.5	39.2	34.1	33.1	88.5	11.5	44
Accommodation and Food Services	6.2	32.3	28.8	29.5	47.4	52.6	26
Public Administration and Safety	5.9	30.8	30.3	28.4	87.7	12.3	41
Financial and Insurance Services	5.5	28.7	28.2	20.1	90.5	9.5	38
Other Services	4.3	22.5	17.0	12.2	64.0	36.0	38
Wholesale Trade	3.1	16.1	17.9	11.1	75.4	24.6	42
Administrative and Support Services	2.9	15.2	17.4	17.7	60.4	39.6	38
Information Media and Telecommunications	1.7	9.1	8.4	11.2	86.8	13.2	38
Arts and Recreation Services	1.6	8.5	8.4	8.0	46.2	53.8	35
Rental, Hiring and Real Estate Services	1.6	8.2	6.5	5.3	80.7	19.3	38
Electricity, Gas, Water and Waste Services	1.2	6.1	9.4	6.0	95.5	4.5	39
Agriculture, Forestry and Fishing	0.5	2.3	2.5	2.1	61.8	38.2	43
Mining	0.1	0.6	0.9	1.1	99.6	0.4	43
<b>All industries</b>	<b>100.0</b>	<b>520.8</b>	<b>496.8</b>	<b>427.6</b>	<b>71.3</b>	<b>28.7</b>	<b>38</b>

Source: ABS Labour Force Survey, Detailed, four quarter averages, February 2025. \*Median age is from the ABS Census of Population and Housing, 2021. Median age has been derived using aggregated SA2s for the Employment Region.

**Note: Small cells should be viewed with caution due to small sample sizes and regional volatility.**