



Australian Government



Jobs and Skills Australia

Industry profile

Tasmania

Release date: 27 March 2025

Overview

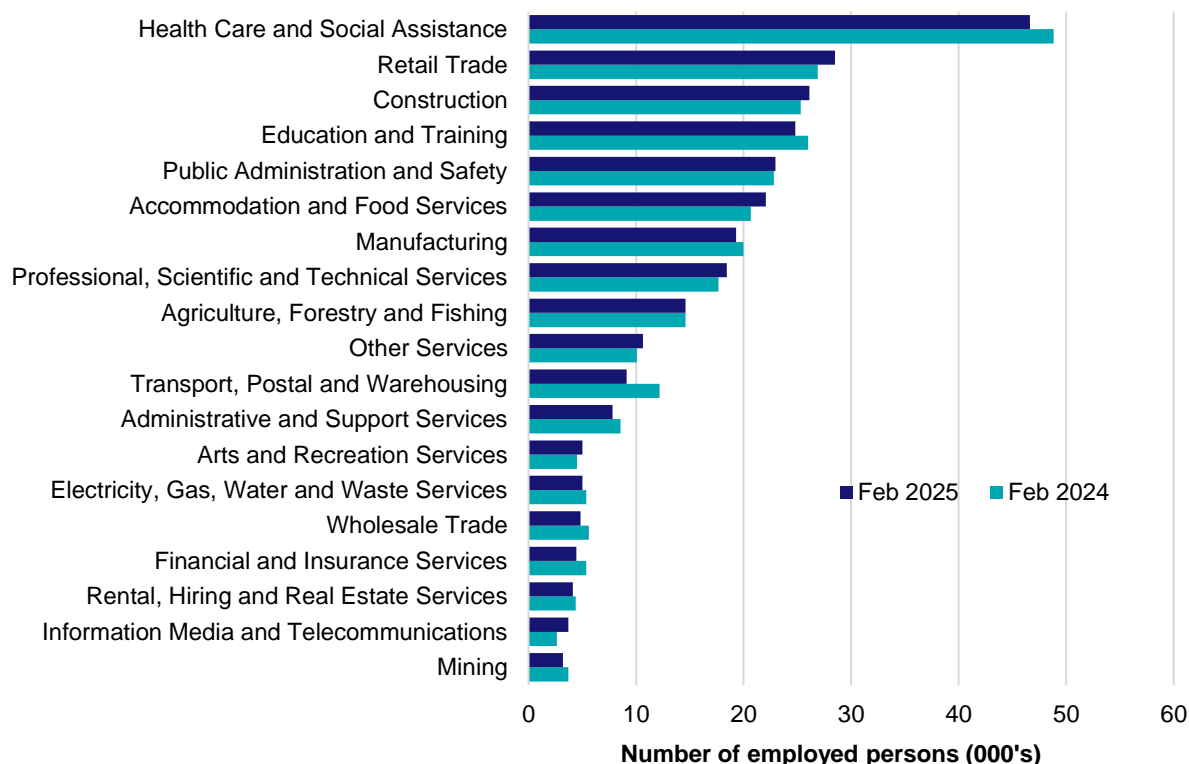
In February 2025, there were around 281,300 people employed in Tasmania. The 5 largest employing industries in Tasmania were Health Care and Social Assistance, Retail Trade, Construction, Education and Training and Public Administration and Safety. Together these 5 industries accounted for 53% of all employment.

Over the year to February 2025, employment in:

- Health Care and Social Assistance fell by 4.5% to stand at 46,600
- Retail Trade rose by 6.0% to stand at 28,500
- Construction rose by 3.2% to stand at 26,100.

In Health Care and Social Assistance in Tasmania, 51% of workers were employed part-time; 75% were Female; and the median age of the workforce was 43. Around 51% of employed persons in this industry were located in Greater Hobart.

Employment by industry, February 2025 and February 2024

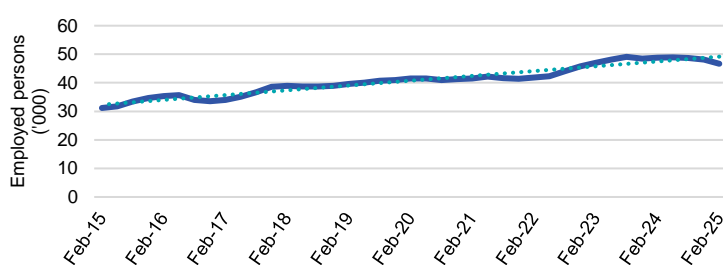


Source: ABS Labour Force Survey, Detailed, four quarter averages, February 2025. Note that total employment (four quarter averaged data) may not match data published in the Labour Market dashboards (6 month averaged data).

Note: For any enquiries related to the data in this report, contact RegionalWorkforceAssessment@jobsandskills.gov.au

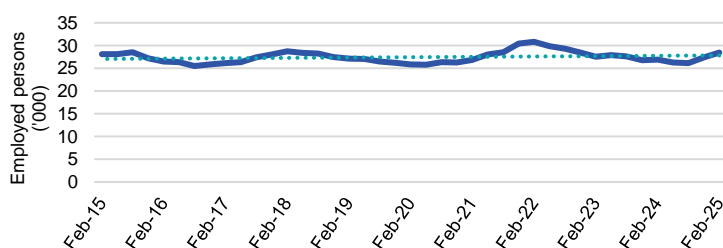
Five largest employing industries: key statistics

Health Care and Social Assistance



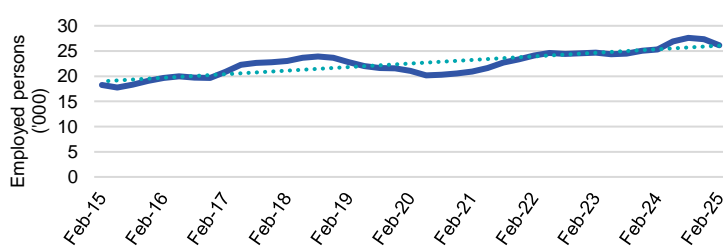
Number employed (Feb-25):	46,600
1 year employment change:	-4.5%
5 year employment change:	12.4%
10 year employment change:	49.6%
Youth share of employment:	10.2%
Mature age share of employment:	18.6%

Retail Trade



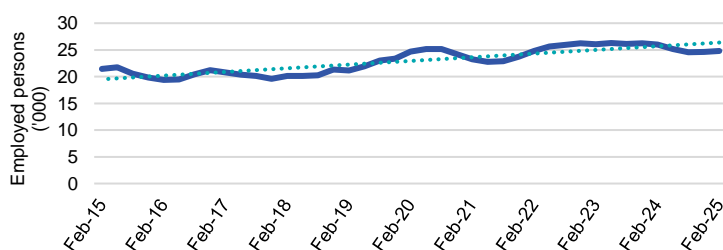
Number employed (Feb-25):	28,500
1 year employment change:	6.0%
5 year employment change:	10.1%
10 year employment change:	1.4%
Youth share of employment:	20.4%
Mature age share of employment:	7.5%

Construction



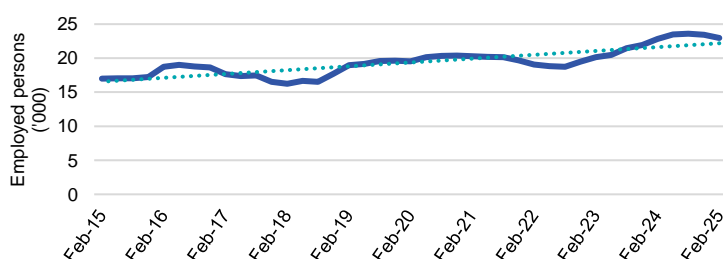
Number employed (Feb-25):	26,100
1 year employment change:	3.2%
5 year employment change:	24.3%
10 year employment change:	43.3%
Youth share of employment:	11.1%
Mature age share of employment:	7.8%

Education and Training



Number employed (Feb-25):	24,800
1 year employment change:	-4.5%
5 year employment change:	0.5%
10 year employment change:	15.8%
Youth share of employment:	4.8%
Mature age share of employment:	10.8%

Public Administration and Safety



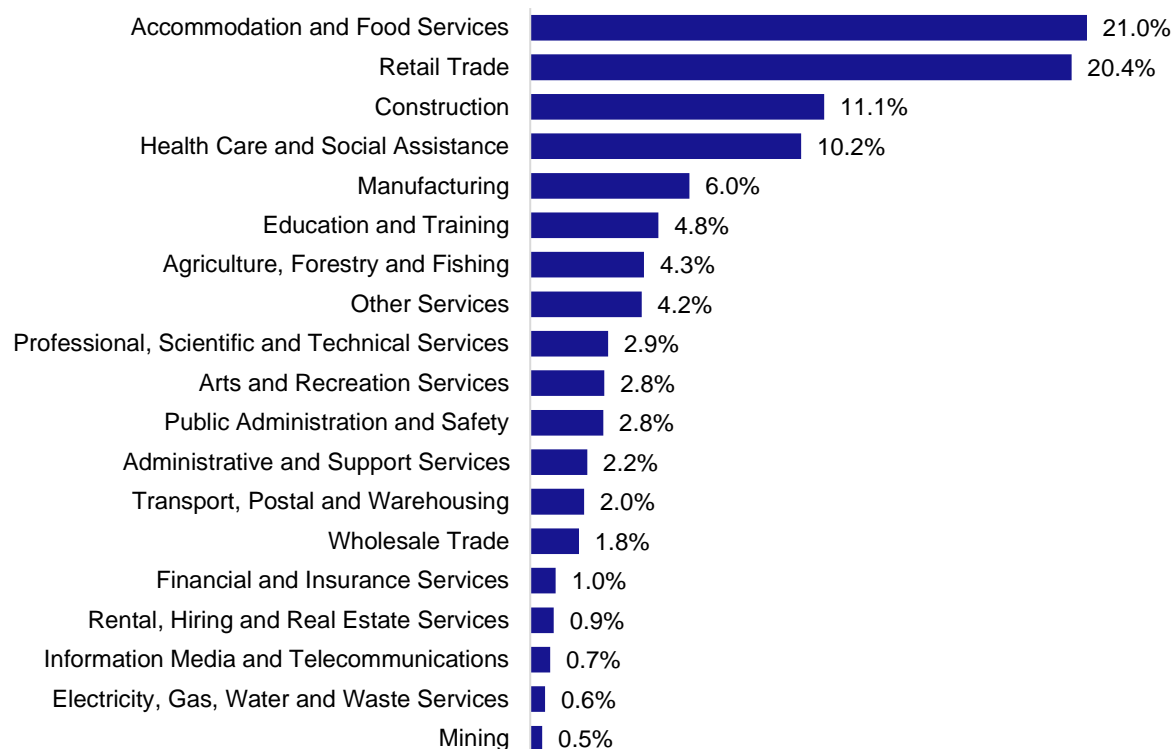
Number employed (Feb-25):	23,000
1 year employment change:	0.7%
5 year employment change:	17.6%
10 year employment change:	35.0%
Youth share of employment:	2.8%
Mature age share of employment:	8.0%

Source: ABS Labour Force Survey, Detailed, four quarter averages, February 2025, except youth and mature age data which are from the ABS Census of Population and Housing, 2021.

Note: In each chart, the solid line is the level of employment and the dotted line is a simple linear trend line for the 10 year period.

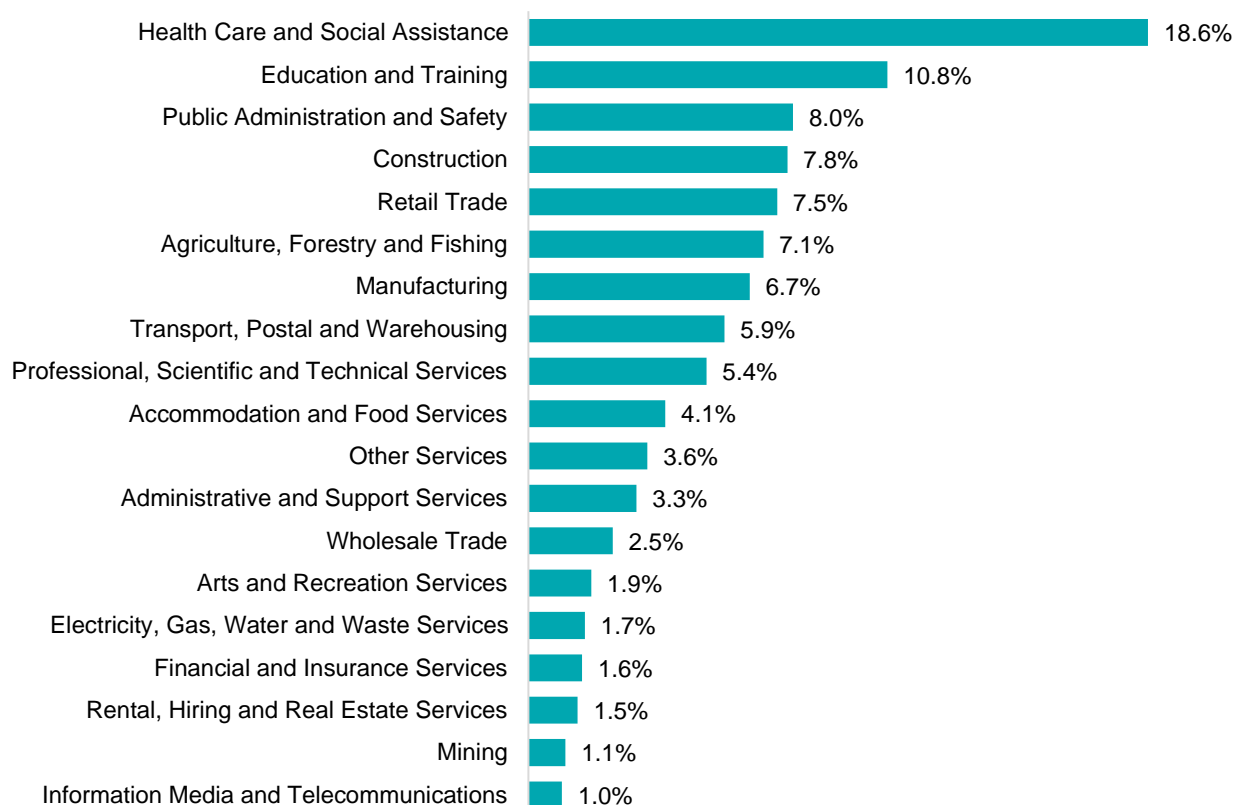
Employment characteristics by Industry

Which industries are youth (aged 15-24) employed in?



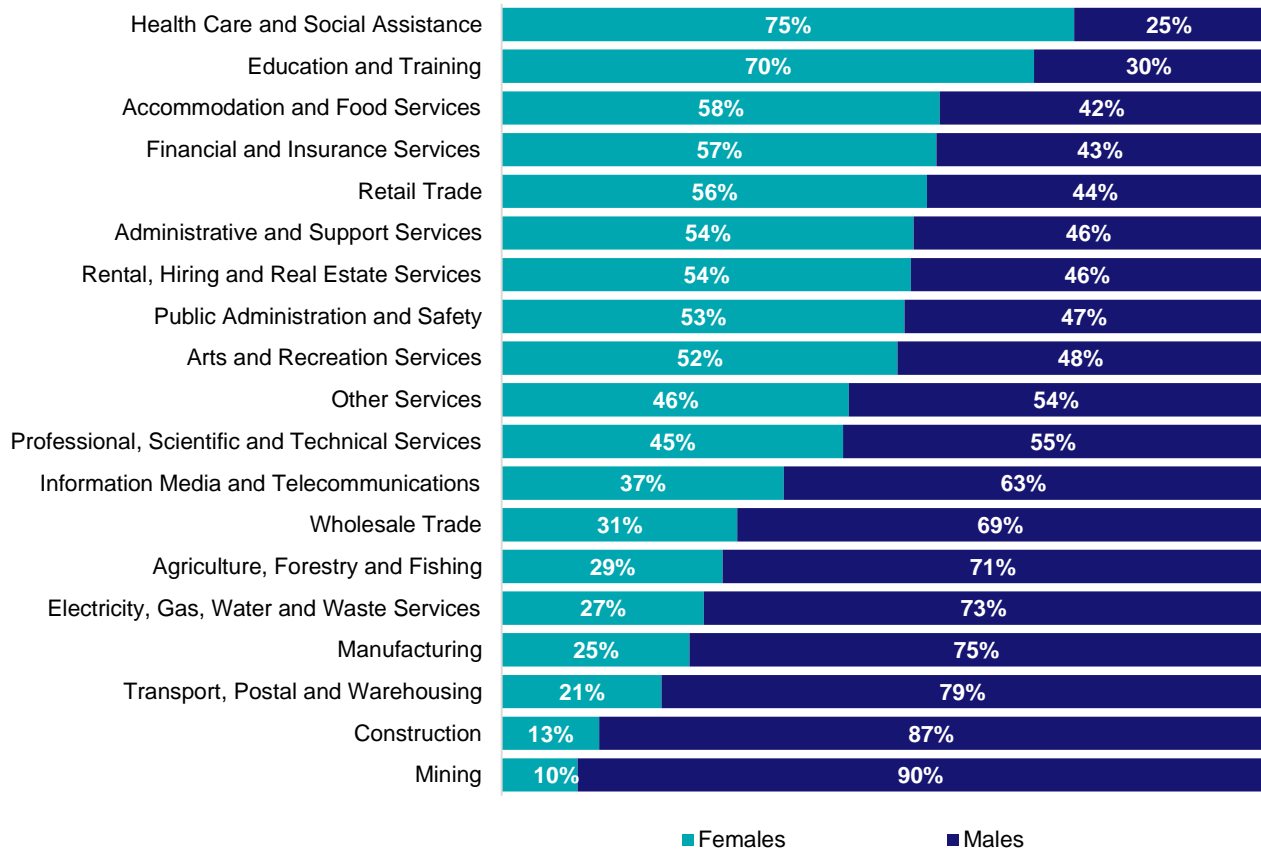
Source: ABS Census of Population and Housing, 2021.

Which industries are mature age persons (aged 55+) employed in?



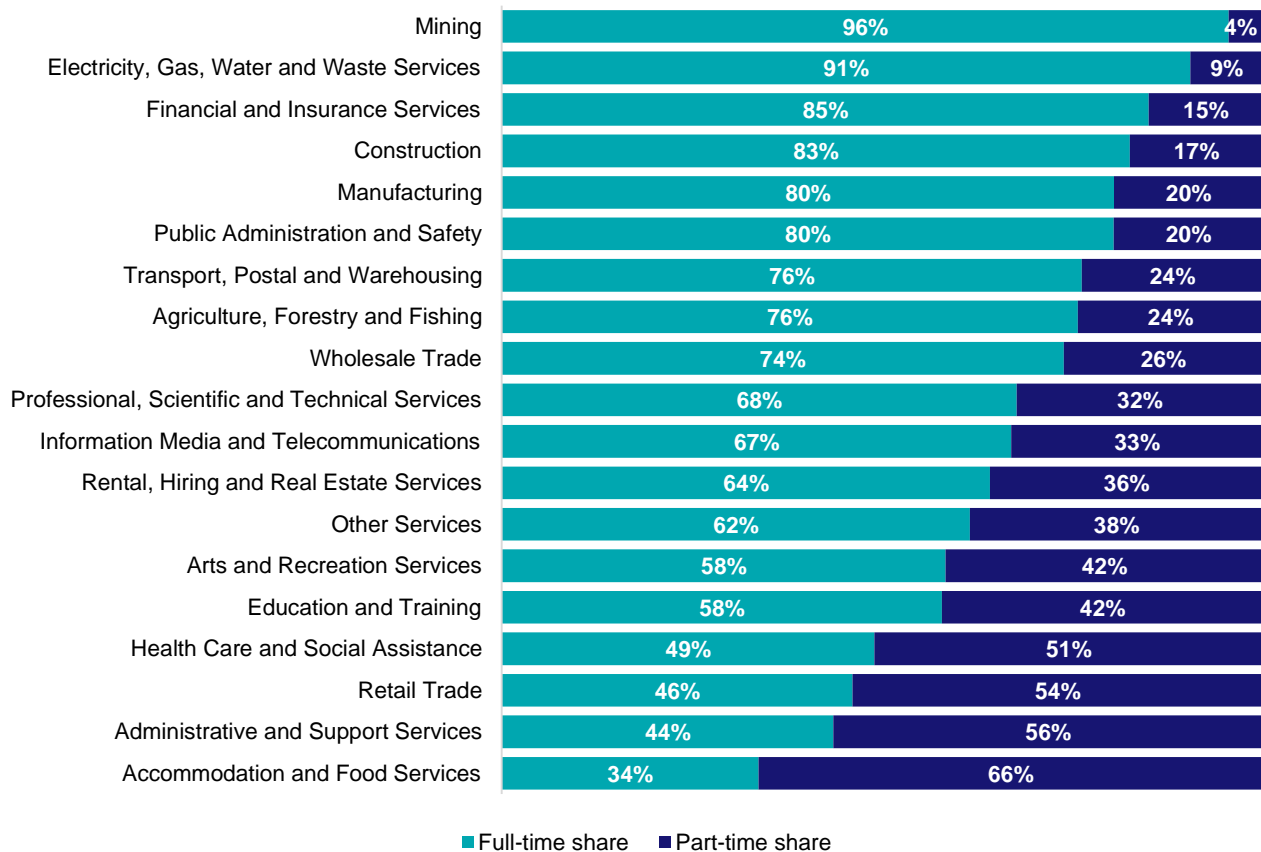
Source: ABS Census of Population and Housing, 2021.

Gender share by industry



Source: ABS Labour Force Survey, Detailed, four quarter averages, February 2025.

Full-time and part-time employment status by industry



Source: ABS Labour Force Survey, Detailed, four quarter averages, February 2025.

Appendix

Employment by industry, Tasmania, February 2025

Industry (in order of size)	Share of emp't Feb-25 (%)	Share of emp't in Greater Hobart (%)	Share of emp't in Rest of TAS (%)	Employed ('000)			1 year change		5 year change		Median age *
				Feb-25	Feb-24	Feb-20	('000)	%	('000)	%	
Health Care and Social Assistance	16.6	51.5	48.5	46.6	48.8	41.5	-2.2	-4.5	5.1	12.4	43
Retail Trade	10.1	45.0	55.0	28.5	26.9	25.9	1.6	6.0	2.6	10.1	34
Construction	9.3	43.8	56.2	26.1	25.3	21.0	0.8	3.2	5.1	24.3	38
Education and Training	8.8	51.9	48.1	24.8	26.0	24.7	-1.2	-4.5	0.1	0.5	45
Public Administration and Safety	8.2	61.7	38.3	23.0	22.8	19.5	0.2	0.7	3.4	17.6	46
Accommodation and Food Services	7.8	49.5	50.5	22.1	20.7	22.5	1.4	6.8	-0.4	-1.7	29
Manufacturing	6.9	31.0	69.0	19.3	20.0	18.6	-0.7	-3.4	0.7	3.9	42
Professional, Scientific and Technical Services	6.6	55.7	44.3	18.4	17.7	15.3	0.8	4.4	3.1	20.5	42
Agriculture, Forestry and Fishing	5.2	18.2	81.8	14.6	14.6	15.5	0.0	0.1	-0.9	-5.9	44
Other Services	3.8	46.5	53.5	10.6	10.1	9.6	0.6	5.5	1.0	10.9	39
Transport, Postal and Warehousing	3.2	32.7	67.3	9.1	12.2	10.8	-3.1	-25.2	-1.7	-15.6	47
Administrative and Support Services	2.8	41.6	58.4	7.8	8.5	6.6	-0.7	-8.7	1.2	18.9	43
Arts and Recreation Services	1.8	52.7	47.3	5.0	4.5	6.5	0.5	11.1	-1.5	-23.0	40
Electricity, Gas, Water and Waste Services	1.8	52.2	47.8	5.0	5.4	3.3	-0.4	-6.7	1.7	53.1	44
Wholesale Trade	1.7	44.1	55.9	4.8	5.6	5.8	-0.8	-13.5	-1.0	-16.6	44
Financial and Insurance Services	1.6	66.7	33.3	4.4	5.4	5.4	-0.9	-17.4	-0.9	-17.1	41
Rental, Hiring and Real Estate Services	1.5	44.4	55.6	4.1	4.4	3.1	-0.3	-5.9	1.0	32.7	45
Information Media and Telecommunications	1.3	56.0	44.0	3.7	2.6	3.1	1.1	41.8	0.6	20.3	42
Mining	1.1	18.5	81.5	3.2	3.7	2.9	-0.5	-14.0	0.3	9.6	44
All Industries	100.0	46.6	53.4	281.3	285.1	261.4	-3.8	-1.3	19.9	7.6	41

Source: ABS Labour Force Survey, Detailed, February 2025, four quarter averages. *Median age is from the ABS Census of Population and Housing, 2021.