

Employment Region Industry profile

South Coast of Victoria Employment Region

Release date: 27 March 2025

Overview

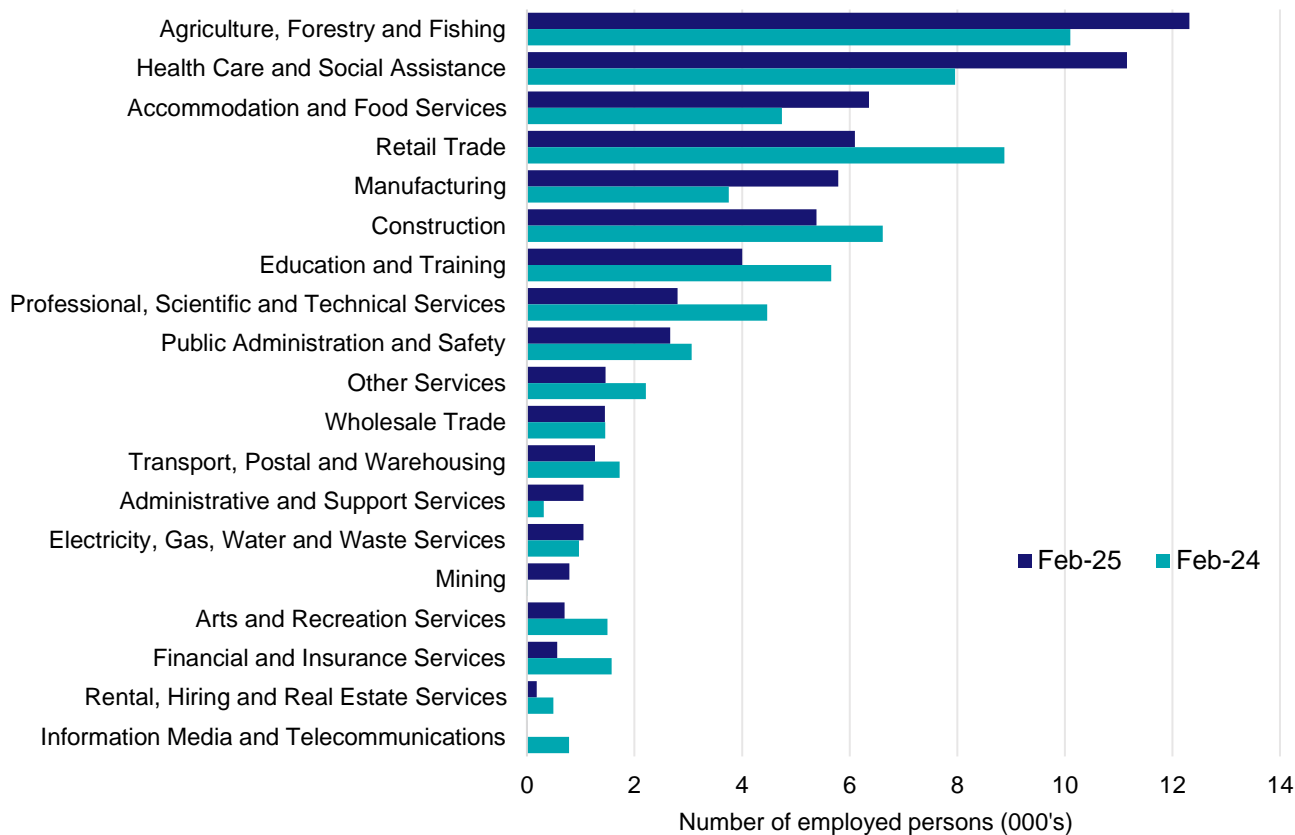
In February 2025, there were around 65,100 people employed in the South Coast of Victoria Employment Region. The 5 largest employing industries in the region were Agriculture, Forestry and Fishing, Health Care and Social Assistance, Accommodation and Food Services, Retail Trade, and Manufacturing. Together these 5 industries accounted for 64% of employment in the region.

Over the year to February 2025, employment in:

- Agriculture, Forestry and Fishing rose by 21.9% to stand at 12,300
- Health Care and Social Assistance rose by 40.1% to stand at 11,200
- Accommodation and Food Services rose by 34.1% to stand at 6,400.

In Agriculture, Forestry and Fishing in the South Coast of Victoria Employment Region, 78% of workers were employed full-time; 71% were male; and the median age of the workforce was 50.

Employment by industry, February 2025 and February 2024



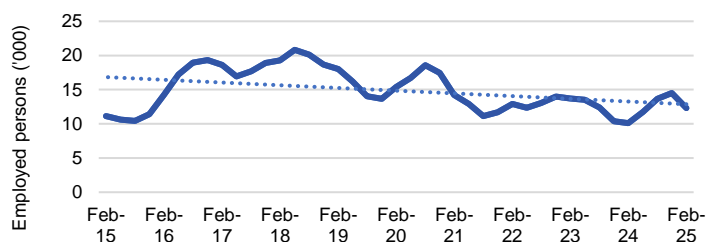
Source: ABS Labour Force Survey*, Detailed, four quarter averages, February 2025. Note that total employment for the region (four quarter averaged data) will not match data published in the Employment Region Labour Market dashboards (modelled estimates).

*ABS Labour Force Survey data are based on the Warrnambool and South West SA4.

Notes: Data are the latest available. A high degree of caution should be exercised when interpreting data at the regional level, particularly in regards to percentage changes, given the volatility of the underlying data. For any enquiries related to the data in this report, please contact RegionalWorkforceAssessment@jobsandskills.gov.au

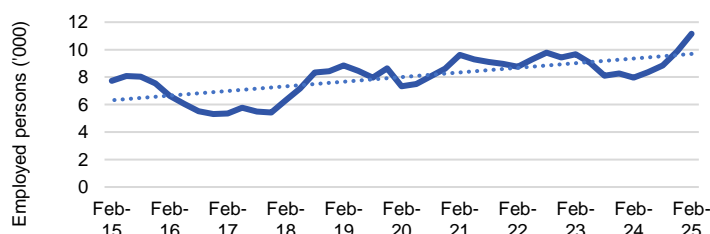
Five largest employing industries: key statistics

Agriculture, Forestry and Fishing



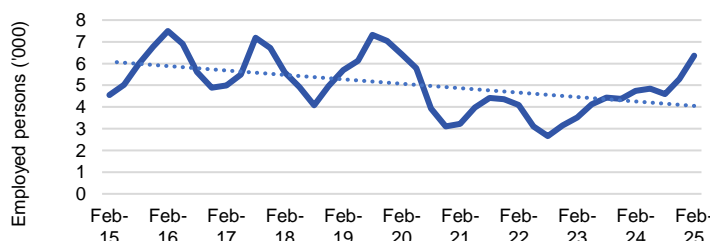
Number employed (Feb-25):	12,300
1 year employment change:	21.9%
5 year employment change:	-20.0%
10 year employment change:	10.7%
Youth share of employment:	11.6%
Mature age share of employment:	22.4%

Health Care and Social Assistance



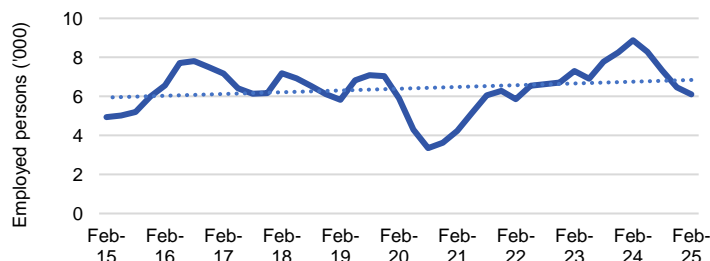
Number employed (Feb-25):	11,200
1 year employment change:	40.1%
5 year employment change:	52.0%
10 year employment change:	44.5%
Youth share of employment:	7.8%
Mature age share of employment:	17.3%

Accommodation and Food Services



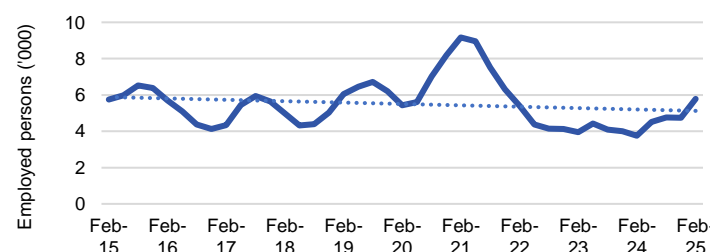
Number employed (Feb-25):	6,400
1 year employment change:	34.1%
5 year employment change:	-1.1%
10 year employment change:	39.5%
Youth share of employment:	19.1%
Mature age share of employment:	4.3%

Retail Trade



Number employed (Feb-25):	6,100
1 year employment change:	-31.3%
5 year employment change:	3.2%
10 year employment change:	23.5%
Youth share of employment:	21.3%
Mature age share of employment:	7.1%

Manufacturing



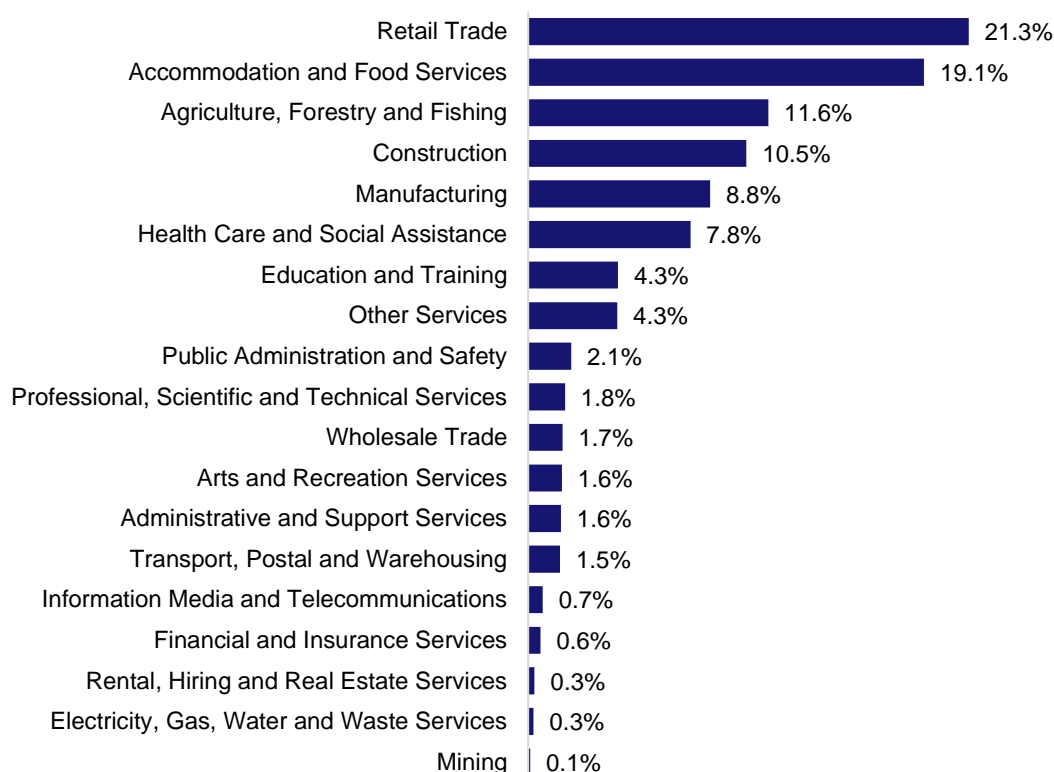
Number employed (Feb-25):	5,800
1 year employment change:	54.2%
5 year employment change:	6.5%
10 year employment change:	0.7%
Youth share of employment:	8.8%
Mature age share of employment:	7.3%

Source: ABS Labour Force Survey, Detailed, four quarter averages, February 2025, except youth and mature age data which are from the ABS Census of Population and Housing, 2021.

Notes: In each chart, the solid line is the level of employment and the dotted line is a simple linear trend line for the 10 year period. Given the volatility of the underlying data, employment estimates should be treated with a high degree of caution. Particular focus should be placed on the employment series over time to ascertain more reliable long-term growth trends.

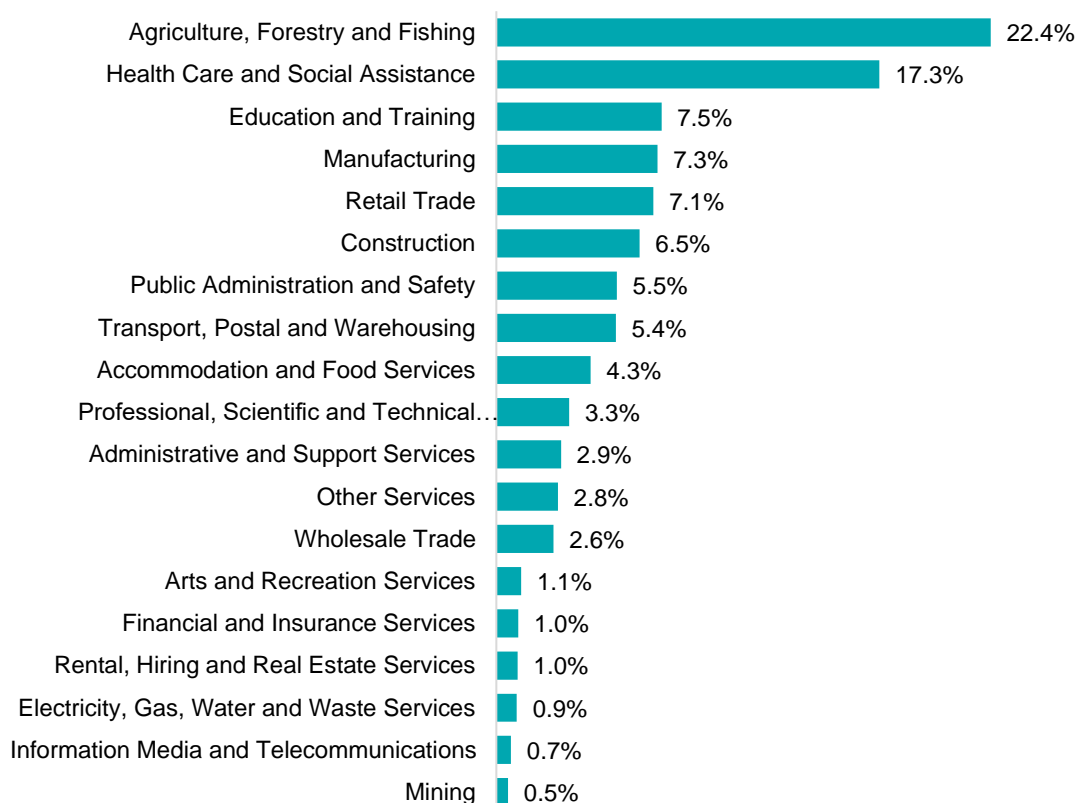
Employment characteristics by Industry

Which industries are youth (aged 15-24) employed in?



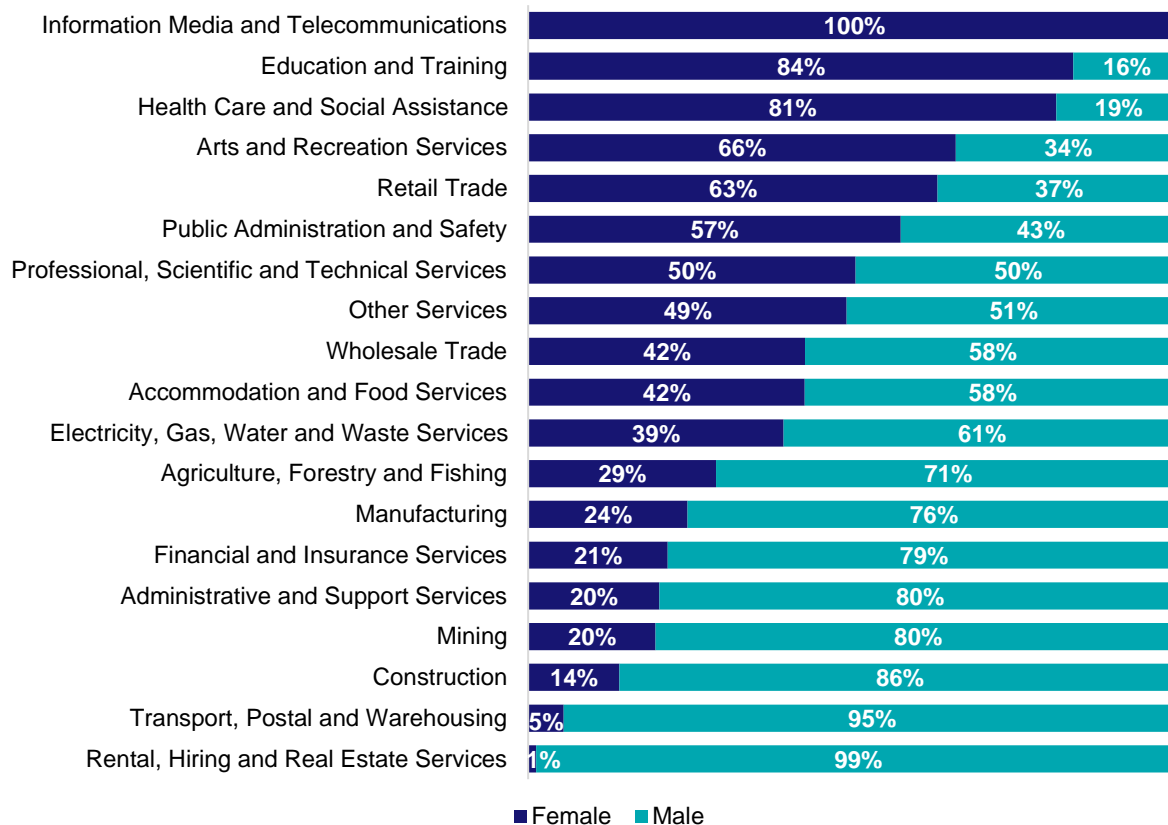
Source: ABS Census of Population and Housing, 2021.

Which industries are mature age persons (aged 55+) employed in?



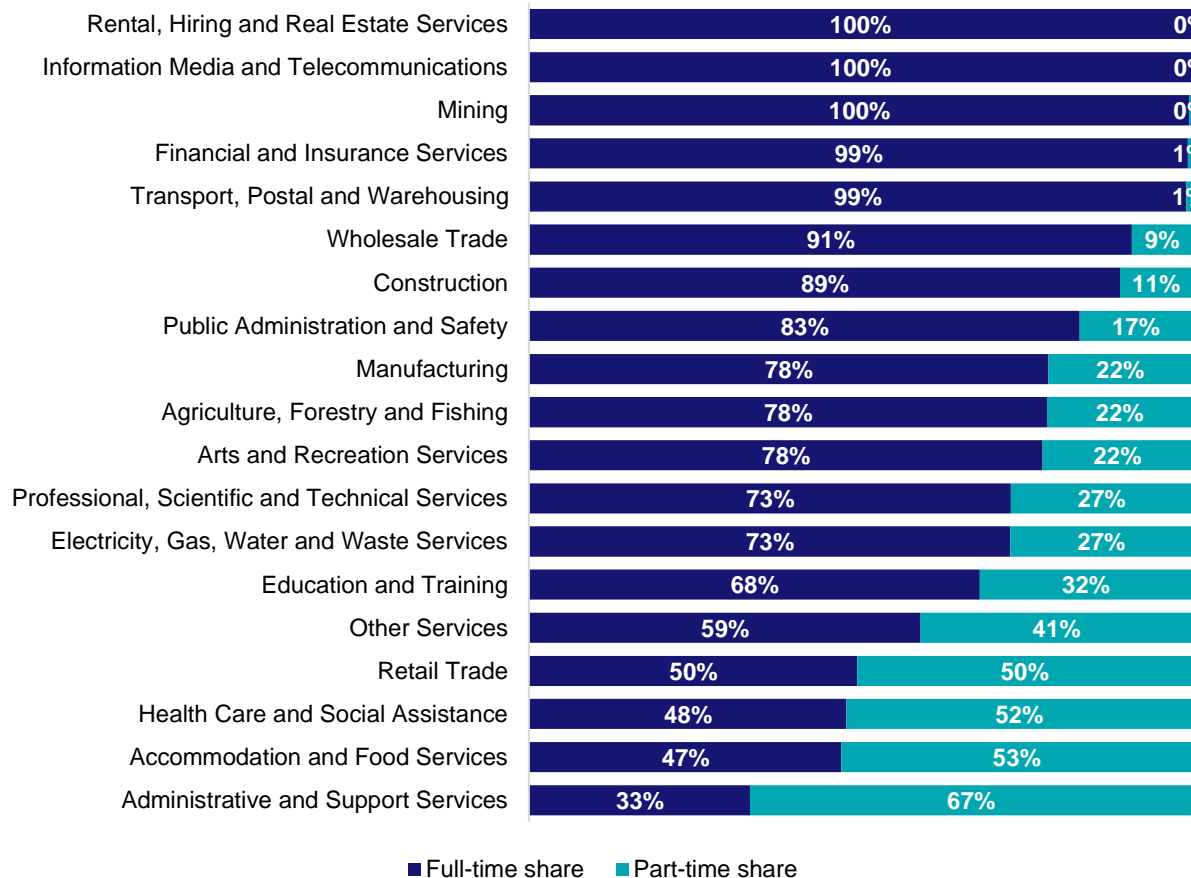
Source: ABS Census of Population and Housing, 2021. Note: SA2 level Census data have been aggregated to the Employment Region level.

Gender share by industry



Source: ABS Labour Force Survey, Detailed, four quarter averages, February 2025.

Full-time and part-time employment status by industry



Source: ABS Labour Force Survey, Detailed, four quarter averages, February 2025.

Appendix

Employment by industry, South Coast of Victoria, February 2025

Industry (in order of size)	Share of employment in the region Feb-25 (%)	Employed ('000)			Full-time share %	Part-time share %	Median age *
		Feb-25	Feb-24	Feb-20			
Agriculture, Forestry and Fishing	18.9	12.3	10.1	15.4	78.2	21.8	50
Health Care and Social Assistance	17.1	11.2	8.0	7.3	47.9	52.1	47
Accommodation and Food Services	9.8	6.4	4.7	6.4	47.2	52.8	30
Retail Trade	9.4	6.1	8.9	5.9	49.6	50.4	36
Manufacturing	8.9	5.8	3.8	5.4	78.4	21.6	41
Construction	8.3	5.4	6.6	5.5	89.2	10.8	39
Education and Training	6.2	4.0	5.7	6.4	68.1	31.9	46
Professional, Scientific and Technical Services	4.3	2.8	4.5	2.2	72.8	27.2	43
Public Administration and Safety	4.1	2.7	3.1	2.3	83.1	16.9	47
Other Services	2.2	1.5	2.2	1.9	59.2	40.8	40
Wholesale Trade	2.2	1.4	1.5	2.2	91.0	9.0	47
Transport, Postal and Warehousing	1.9	1.3	1.7	3.1	99.2	0.8	50
Administrative and Support Services	1.6	1.1	0.3	1.3	33.4	66.6	47
Electricity, Gas, Water and Waste Services	1.6	1.1	1.0	1.1	72.7	27.3	44
Mining	1.2	0.8	0.0	0.4	99.7	0.3	55
Arts and Recreation Services	1.1	0.7	1.5	0.4	77.6	22.4	40
Financial and Insurance Services	0.9	0.6	1.6	0.9	99.5	0.5	43
Rental, Hiring and Real Estate Services	0.3	0.2	0.5	0.2	100.0	0.0	46
Information Media and Telecommunications	0.0	0.0	0.8	0.4	100.0	0.0	35
All industries	100.0	65.1	66.3	68.7	67.5	32.5	44

Source: ABS Labour Force Survey, Detailed, four quarter averages, February 2025. *Median age is from the ABS Census of Population and Housing, 2021. Median age has been derived using aggregated SA2s for the Employment Region.

Note: Small cells should be viewed with caution due to small sample sizes and regional volatility.