



Australian Government



Jobs and Skills Australia

Industry profile

Queensland

Release date: 27 March 2025

Overview

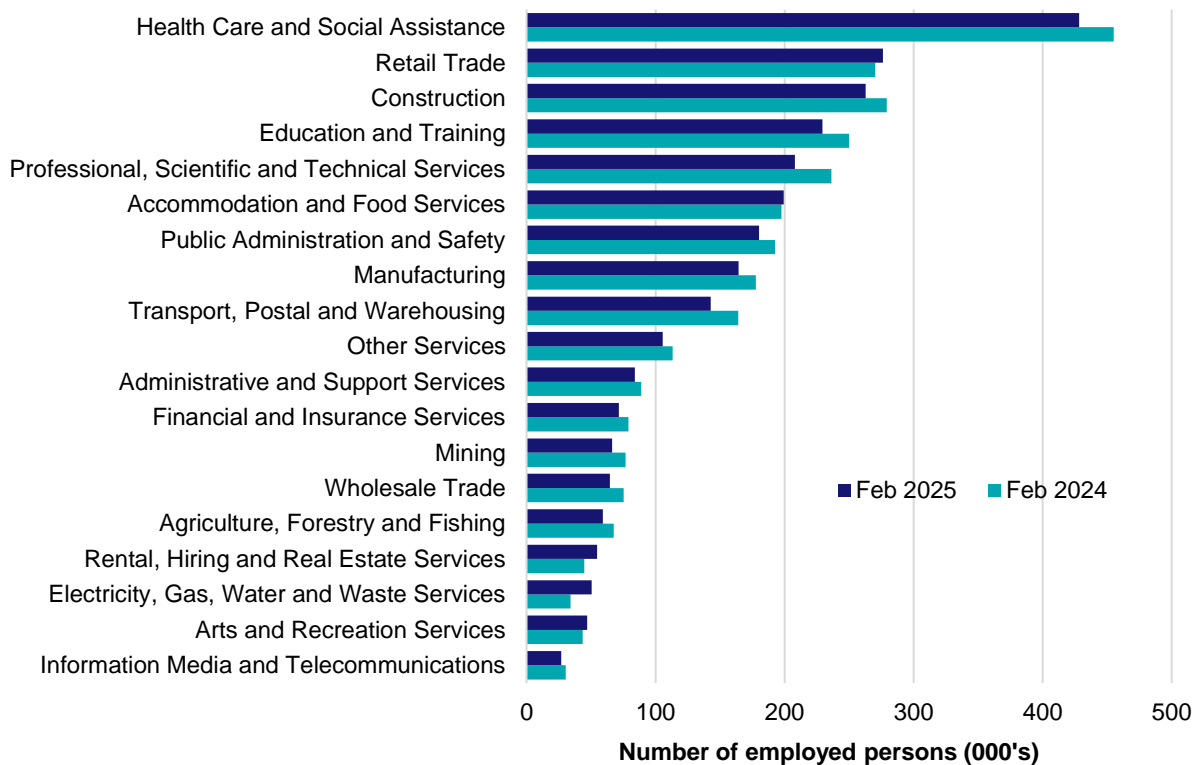
In February 2025, there were around 2,721,300 people employed in Queensland. The 5 largest employing industries in Queensland were Health Care and Social Assistance, Retail Trade, Construction, Education and Training and Professional, Scientific and Technical Services. Together these 5 industries accounted for 52% of all employment.

Over the year to February 2025, employment in:

- Health Care and Social Assistance fell by 5.9% to stand at 428,200
- Retail Trade rose by 2.2% to stand at 276,200
- Construction fell by 5.8% to stand at 262,900.

In Health Care and Social Assistance in Queensland, 56% of workers were employed full-time; 76% were Female; and the median age of the workforce was 42. Around 54% of employed persons in this industry were located in Greater Brisbane.

Employment by industry, February 2025 and February 2024

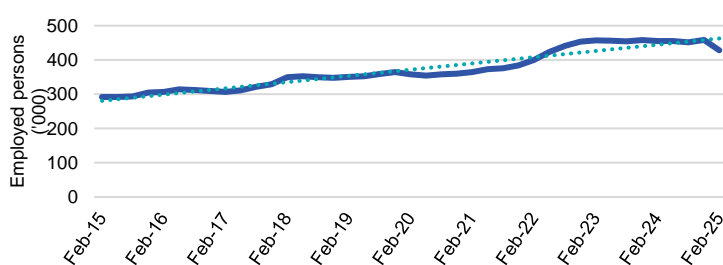


Source: ABS Labour Force Survey, Detailed, four quarter averages, February 2025. Note that total employment (four quarter averaged data) may not match data published in the Labour Market dashboards (6 month averaged data).

Note: For any enquiries related to the data in this report, contact RegionalWorkforceAssessment@jobsandskills.gov.au

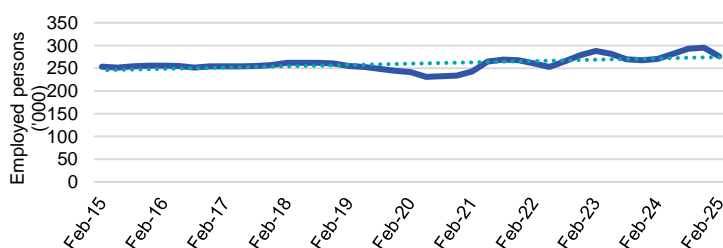
Five largest employing industries: key statistics

Health Care and Social Assistance



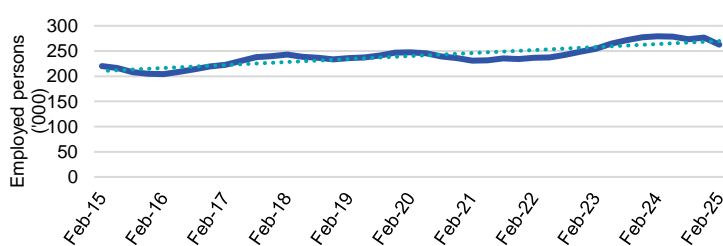
Number employed (Feb-25):	428,200
1 year employment change:	-5.9%
5 year employment change:	19.7%
10 year employment change:	46.7%
Youth share of employment:	10.6%
Mature age share of employment:	17.6%

Retail Trade



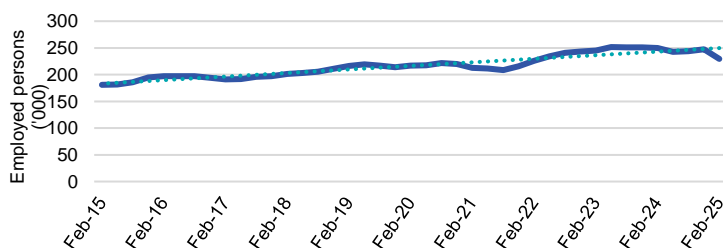
Number employed (Feb-25):	276,200
1 year employment change:	2.2%
5 year employment change:	14.3%
10 year employment change:	8.8%
Youth share of employment:	19.6%
Mature age share of employment:	7.7%

Construction



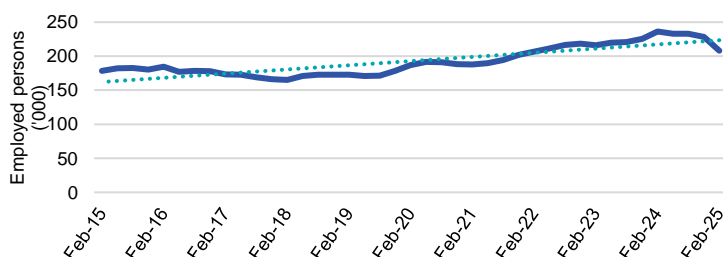
Number employed (Feb-25):	262,900
1 year employment change:	-5.8%
5 year employment change:	6.3%
10 year employment change:	19.4%
Youth share of employment:	8.7%
Mature age share of employment:	8.6%

Education and Training



Number employed (Feb-25):	229,400
1 year employment change:	-8.2%
5 year employment change:	5.9%
10 year employment change:	26.8%
Youth share of employment:	5.2%
Mature age share of employment:	10.6%

Professional, Scientific and Technical Services



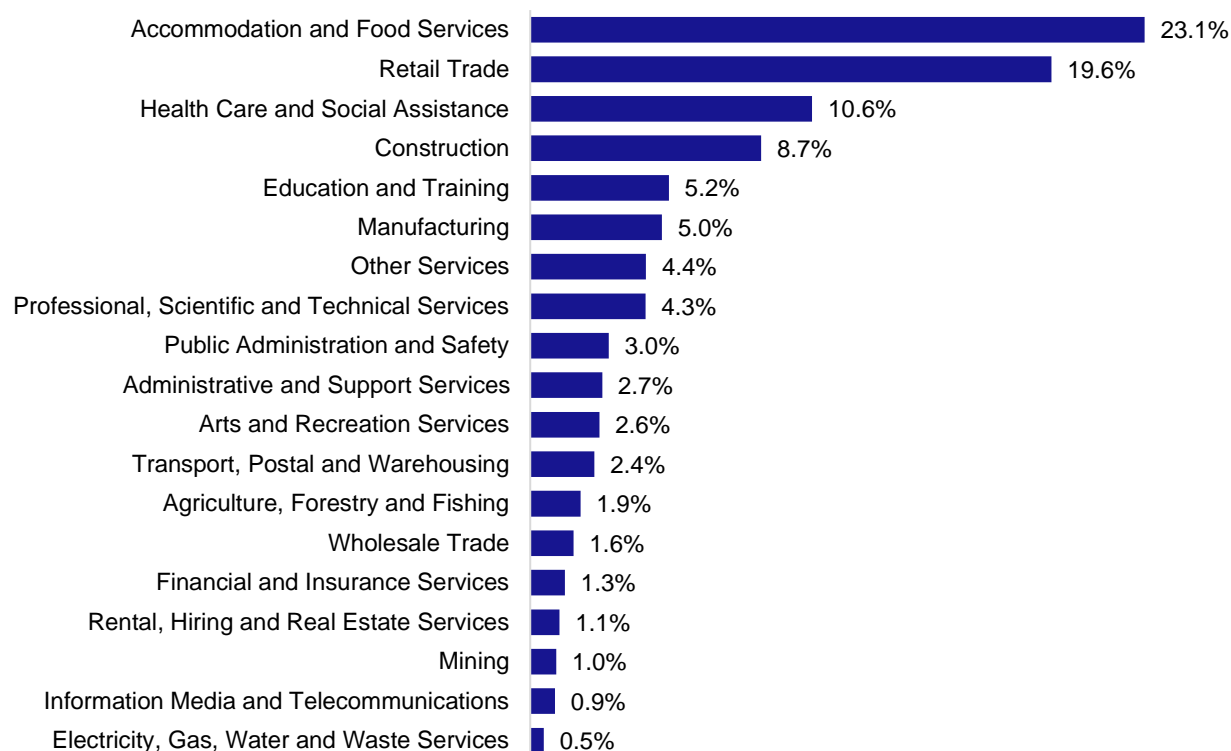
Number employed (Feb-25):	207,900
1 year employment change:	-12.0%
5 year employment change:	11.1%
10 year employment change:	16.5%
Youth share of employment:	4.3%
Mature age share of employment:	6.3%

Source: ABS Labour Force Survey, Detailed, four quarter averages, February 2025, except youth and mature age data which are from the ABS Census of Population and Housing, 2021.

Note: In each chart, the solid line is the level of employment and the dotted line is a simple linear trend line for the 10 year period.

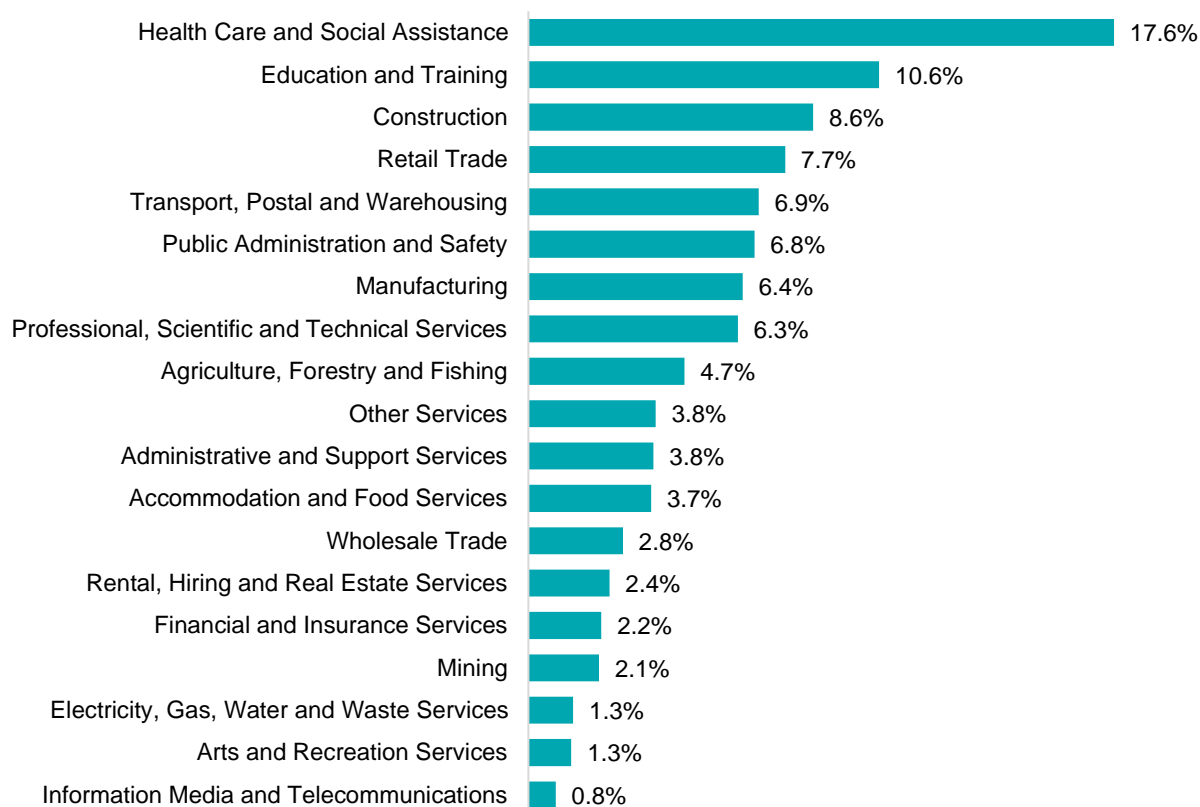
Employment characteristics by Industry

Which industries are youth (aged 15-24) employed in?



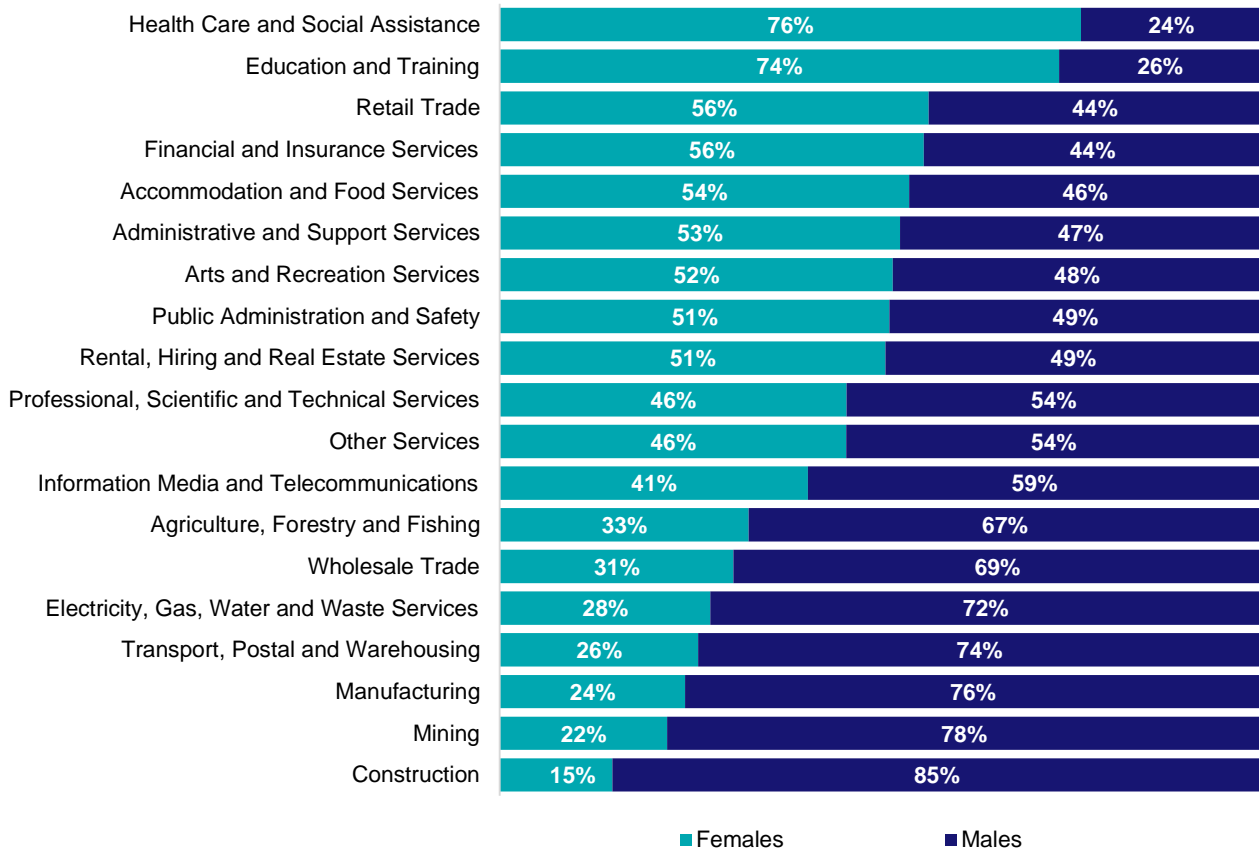
Source: ABS Census of Population and Housing, 2021.

Which industries are mature age persons (aged 55+) employed in?



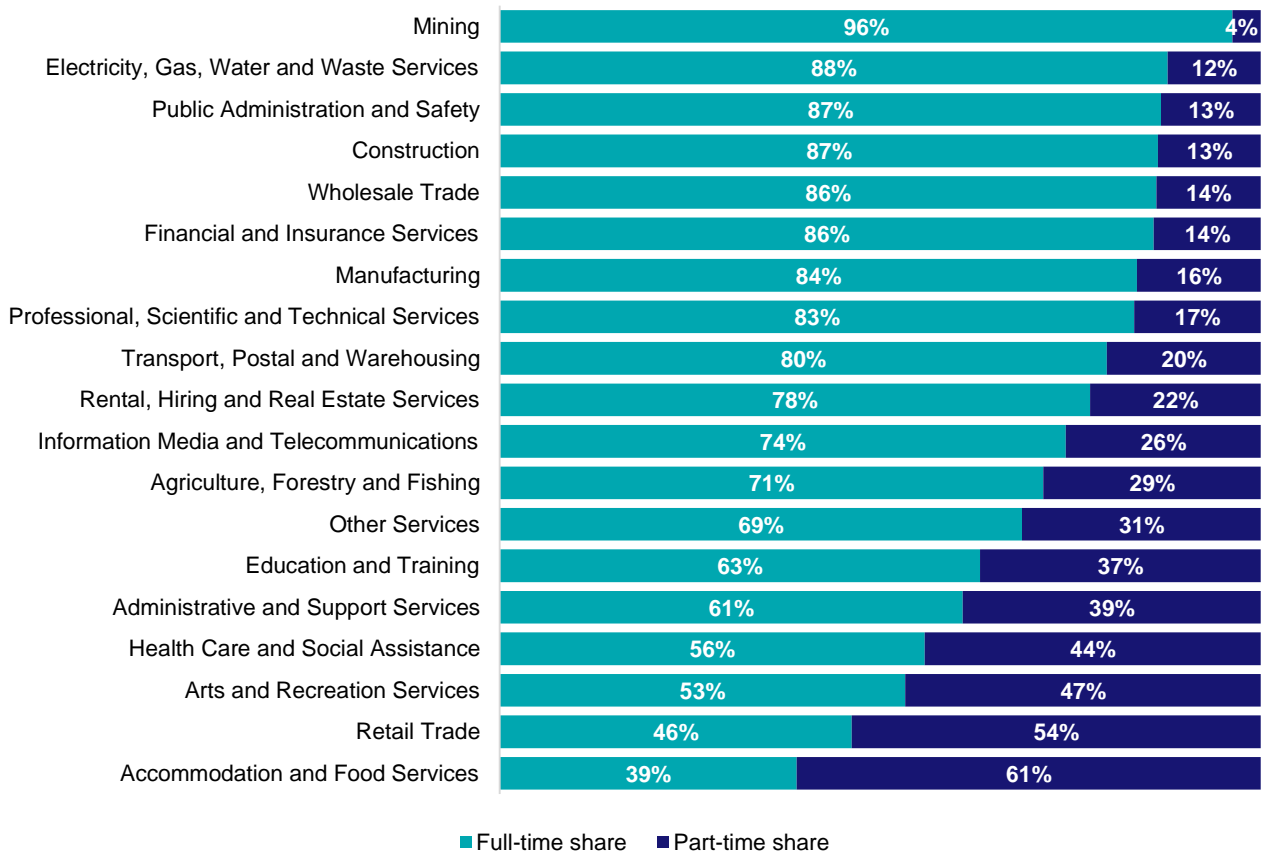
Source: ABS Census of Population and Housing, 2021.

Gender share by industry



Source: ABS Labour Force Survey, Detailed, four quarter averages, February 2025.

Full-time and part-time employment status by industry



Source: ABS Labour Force Survey, Detailed, four quarter averages, February 2025.

Appendix

Employment by industry, Queensland, February 2025

Industry (in order of size)	Share of emp't Feb-25 (%)	Share of emp't in Greater Brisbane (%)	Share of emp't in Rest of QLD (%)	Employed ('000)			1 year change		5 year change		Median age *
				Feb-25	Feb-24	Feb-20	('000)	%	('000)	%	
Health Care and Social Assistance	15.7	54.1	45.9	428.2	455.2	357.8	-26.9	-5.9	70.5	19.7	42
Retail Trade	10.1	56.8	43.2	276.2	270.4	241.6	5.8	2.2	34.6	14.3	33
Construction	9.7	53.1	46.9	262.9	279.2	247.2	-16.3	-5.8	15.7	6.3	39
Education and Training	8.4	54.7	45.3	229.4	249.8	216.7	-20.4	-8.2	12.8	5.9	44
Professional, Scientific and Technical Services	7.6	64.8	35.2	207.9	236.3	187.1	-28.4	-12.0	20.8	11.1	40
Accommodation and Food Services	7.3	54.6	45.4	199.3	197.6	201.2	1.6	0.8	-2.0	-1.0	25
Public Administration and Safety	6.6	63.4	36.6	180.2	192.6	160.7	-12.3	-6.4	19.6	12.2	44
Manufacturing	6.0	55.4	44.6	164.2	177.8	165.3	-13.6	-7.7	-1.1	-0.7	42
Transport, Postal and Warehousing	5.3	64.9	35.1	142.9	164.0	135.0	-21.2	-12.9	7.9	5.8	45
Other Services	3.9	54.6	45.4	105.4	113.2	109.5	-7.7	-6.8	-4.1	-3.7	39
Administrative and Support Services	3.1	53.5	46.5	84.0	89.0	92.4	-5.0	-5.6	-8.5	-9.2	41
Financial and Insurance Services	2.6	66.1	33.9	71.6	79.1	60.5	-7.5	-9.5	11.1	18.3	41
Mining	2.4	36.3	63.7	66.3	76.7	70.8	-10.3	-13.5	-4.4	-6.3	42
Wholesale Trade	2.4	60.3	39.7	64.6	75.4	72.5	-10.8	-14.3	-7.9	-10.9	43
Agriculture, Forestry and Fishing	2.2	20.2	79.8	59.2	67.7	70.4	-8.4	-12.5	-11.2	-15.9	47
Rental, Hiring and Real Estate Services	2.0	61.4	38.6	54.6	44.7	50.6	10.0	22.4	4.1	8.1	44
Electricity, Gas, Water and Waste Services	1.9	52.3	47.7	50.4	34.2	30.2	16.2	47.3	20.2	67.0	44
Arts and Recreation Services	1.7	51.8	48.2	47.0	43.4	50.6	3.5	8.1	-3.6	-7.1	36
Information Media and Telecommunications	1.0	60.4	39.6	26.9	30.4	30.3	-3.5	-11.6	-3.4	-11.2	39
All Industries	100.0	55.9	44.1	2721.3	2876.7	2550.3	-155.3	-5.4	171.0	6.7	40

Source: ABS Labour Force Survey, Detailed, February 2025, four quarter averages. *Median age is from the ABS Census of Population and Housing, 2021.