



**Australian Government**



**Jobs and Skills Australia**

## **Note regarding labour force data for the Broome, Esperance, Geraldton and Kalgoorlie Employment Regions**

These Employment Regions fall within the Western Australia – Outback (North and South) SA4. This SA4 is very large and covers much of regional and remote WA, including Broome, Esperance, Geraldton and Kalgoorlie. The WA Outback SA4 is a poor fit for these Employment Regions but is the only data readily available for the labour force. As a result, the labour force data for the Western Australia – Outback (North and South) SA4 is presented for each of these Employment Regions.

# Employment Region Industry profile

## Perth - North Employment Region

Release date: 27 March 2025

### Overview

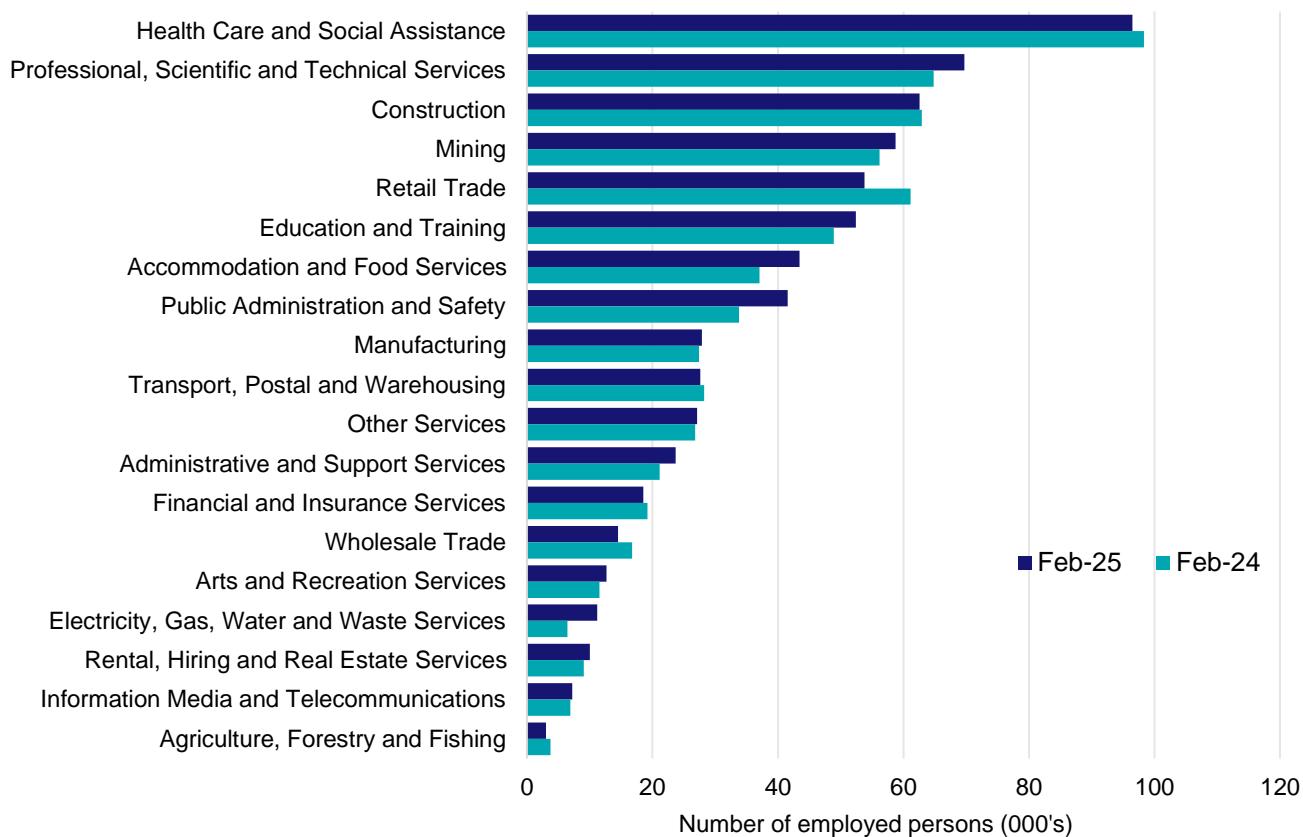
In February 2025, there were around 662,300 people employed in the Perth - North Employment Region. The 5 largest employing industries in the region were Health Care and Social Assistance, Professional, Scientific and Technical Services, Construction, Mining, and Retail Trade. Together these 5 industries accounted for 52% of employment in the region.

Over the year to February 2025, employment in:

- Health Care and Social Assistance fell by 1.9% to stand at 96,500
- Professional, Scientific and Technical Services rose by 7.6% to stand at 69,700
- Construction fell by 0.6% to stand at 62,600.

In Health Care and Social Assistance in the Perth - North Employment Region, 53% of workers were employed full-time; 77% were female; and the median age of the workforce was 41.

### Employment by industry, February 2025 and February 2024



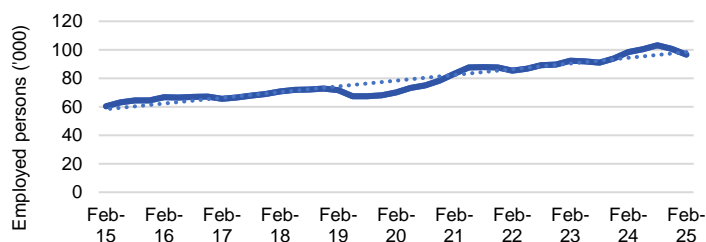
Source: ABS Labour Force Survey\*, Detailed, four quarter averages, February 2025. Note that total employment for the region (four quarter averaged data) will not match data published in the Employment Region Labour Market dashboards (modelled estimates).

\*ABS Labour Force Survey data are based on the combined SA4s of Perth - Inner; Perth - North East; and Perth - North West.

**Notes:** Data are the latest available. A high degree of caution should be exercised when interpreting data at the regional level, particularly in regards to percentage changes, given the volatility of the underlying data. For any enquiries related to the data in this report, please contact [RegionalWorkforceAssessment@jobsandskills.gov.au](mailto:RegionalWorkforceAssessment@jobsandskills.gov.au)

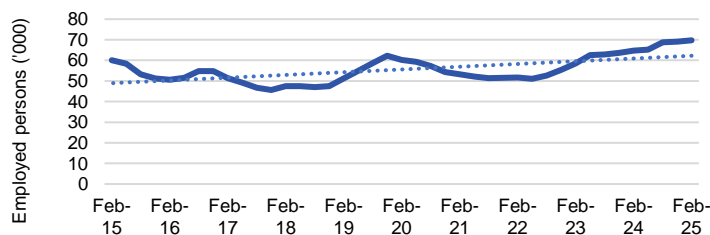
# Five largest employing industries: key statistics

## Health Care and Social Assistance



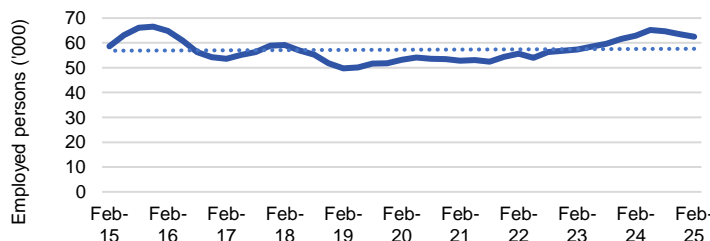
Number employed (Feb-25):	96,500
1 year employment change:	-1.9%
5 year employment change:	37.7%
10 year employment change:	59.9%
Youth share of employment:	9.6%
Mature age share of employment:	16.9%

## Professional, Scientific and Technical Services



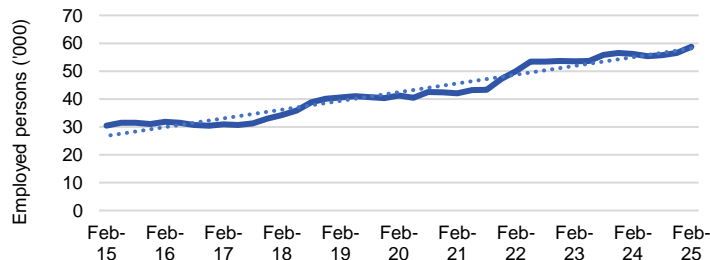
Number employed (Feb-25):	69,700
1 year employment change:	7.6%
5 year employment change:	15.7%
10 year employment change:	15.9%
Youth share of employment:	4.7%
Mature age share of employment:	8.3%

## Construction



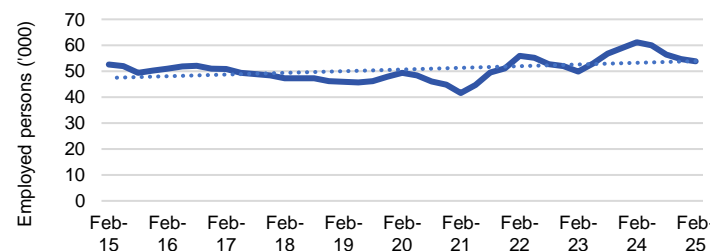
Number employed (Feb-25):	62,600
1 year employment change:	-0.6%
5 year employment change:	17.4%
10 year employment change:	6.8%
Youth share of employment:	7.9%
Mature age share of employment:	8.7%

## Mining



Number employed (Feb-25):	58,700
1 year employment change:	4.5%
5 year employment change:	42.4%
10 year employment change:	93.1%
Youth share of employment:	2.6%
Mature age share of employment:	5.2%

## Retail Trade



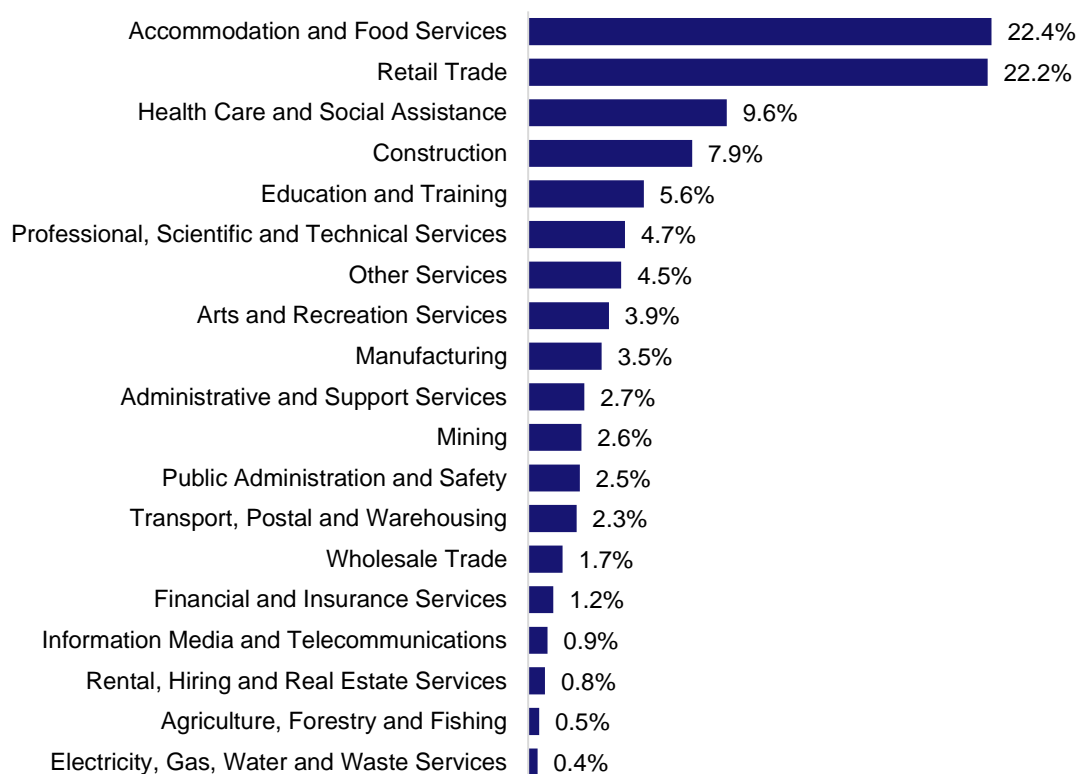
Number employed (Feb-25):	53,800
1 year employment change:	-12.0%
5 year employment change:	9.0%
10 year employment change:	2.3%
Youth share of employment:	22.2%
Mature age share of employment:	7.3%

Source: ABS Labour Force Survey, Detailed, four quarter averages, February 2025, except youth and mature age data which are from the ABS Census of Population and Housing, 2021.

**Notes:** In each chart, the solid line is the level of employment and the dotted line is a simple linear trend line for the 10 year period. Given the volatility of the underlying data, employment estimates should be treated with a high degree of caution. Particular focus should be placed on the employment series over time to ascertain more reliable long-term growth trends.

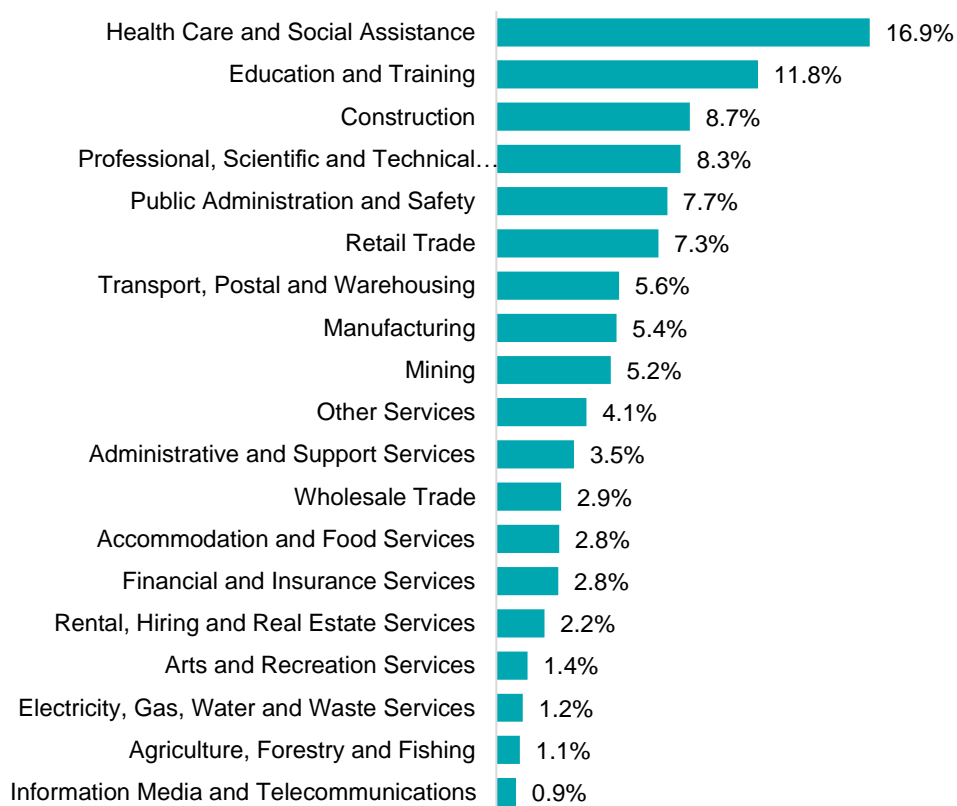
## Employment characteristics by Industry

### Which industries are youth (aged 15-24) employed in?



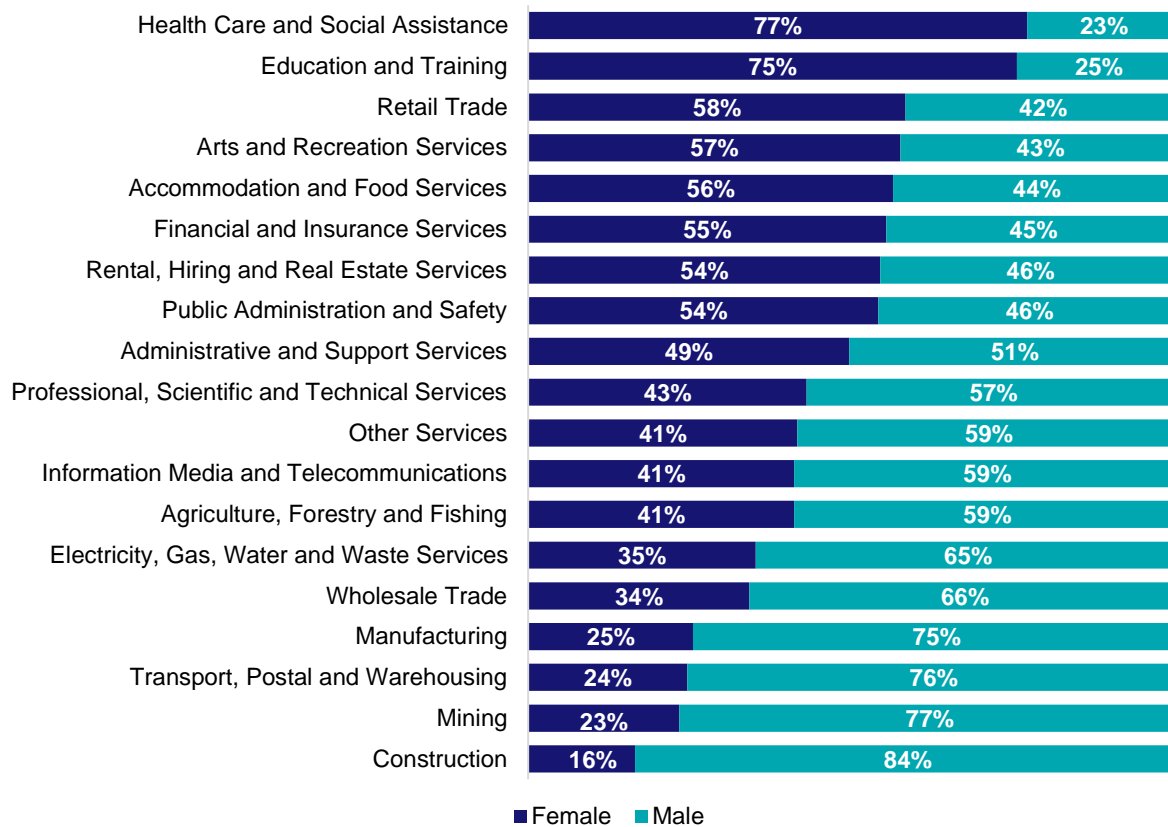
Source: ABS Census of Population and Housing, 2021.

### Which industries are mature age persons (aged 55+) employed in?



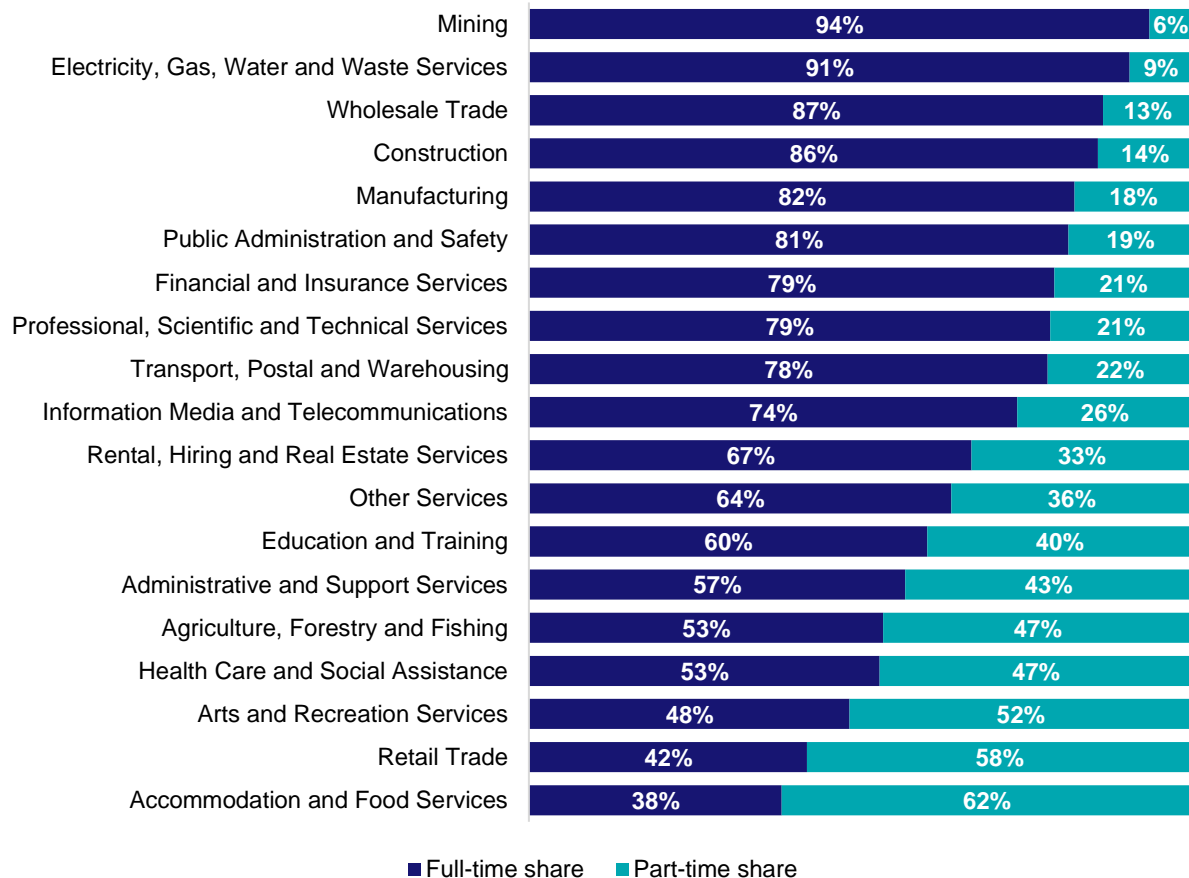
Source: ABS Census of Population and Housing, 2021. Note: SA2 level Census data have been aggregated to the Employment Region level.

## Gender share by industry



Source: ABS Labour Force Survey, Detailed, four quarter averages, February 2025.

## Full-time and part-time employment status by industry



Source: ABS Labour Force Survey, Detailed, four quarter averages, February 2025.

## Appendix

### Employment by industry, Perth - North, February 2025

Industry (in order of size)	Share of employment in the region Feb-25 (%)	Employed ('000)			Full-time share %	Part-time share %	Median age *
		Feb-25	Feb-24	Feb-20			
Health Care and Social Assistance	14.6	96.5	98.3	70.1	53.0	47.0	41
Professional, Scientific and Technical Services	10.5	69.7	64.8	60.3	78.7	21.3	41
Construction	9.4	62.6	62.9	53.3	85.9	14.1	39
Mining	8.9	58.7	56.2	41.2	93.7	6.3	40
Retail Trade	8.1	53.8	61.1	49.3	42.0	58.0	32
Education and Training	7.9	52.4	48.9	45.2	60.1	39.9	45
Accommodation and Food Services	6.6	43.4	37.1	37.7	38.2	61.8	25
Public Administration and Safety	6.3	41.6	33.8	37.0	81.5	18.5	44
Manufacturing	4.2	27.9	27.4	32.1	82.4	17.6	43
Transport, Postal and Warehousing	4.2	27.7	28.2	20.9	78.3	21.7	44
Other Services	4.1	27.1	26.8	22.6	63.8	36.2	38
Administrative and Support Services	3.6	23.7	21.2	21.3	56.8	43.2	40
Financial and Insurance Services	2.8	18.6	19.2	17.4	79.4	20.6	42
Wholesale Trade	2.2	14.5	16.8	17.7	86.7	13.3	43
Arts and Recreation Services	1.9	12.7	11.6	11.9	48.4	51.6	32
Electricity, Gas, Water and Waste Services	1.7	11.2	6.5	7.8	90.7	9.3	43
Rental, Hiring and Real Estate Services	1.5	10.1	9.1	9.6	66.8	33.2	43
Information Media and Telecommunications	1.1	7.2	6.9	4.7	73.7	26.3	38
Agriculture, Forestry and Fishing	0.5	3.0	3.8	4.6	53.5	46.5	44
<b>All industries</b>	<b>100.0</b>	<b>662.3</b>	<b>640.6</b>	<b>564.7</b>	<b>68.2</b>	<b>31.8</b>	<b>40</b>

Source: ABS Labour Force Survey, Detailed, four quarter averages, February 2025. \*Median age is from the ABS Census of Population and Housing, 2021. Median age has been derived using aggregated SA2s for the Employment Region.

**Note: Small cells should be viewed with caution due to small sample sizes and regional volatility.**