



Australian Government



Jobs and Skills Australia

Industry profile

Northern Territory

Release date: 27 March 2025

Overview

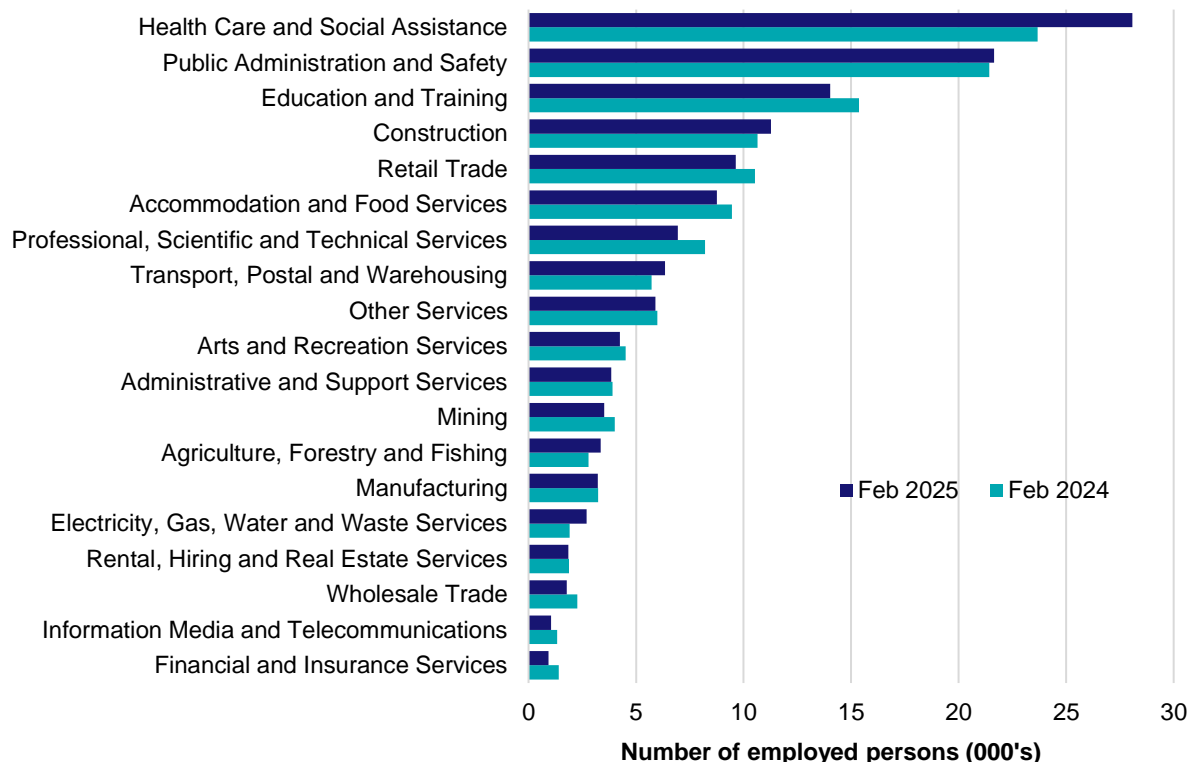
In February 2025, there were around 139,100 people employed in Northern Territory. The 5 largest employing industries in Northern Territory were Health Care and Social Assistance, Public Administration and Safety, Education and Training, Construction and Retail Trade. Together these 5 industries accounted for 61% of all employment.

Over the year to February 2025, employment in:

- Health Care and Social Assistance rose by 18.6% to stand at 28,100
- Public Administration and Safety rose by 1.1% to stand at 21,600
- Education and Training fell by 8.7% to stand at 14,000.

In Health Care and Social Assistance in Northern Territory, 78% of workers were employed full-time; 69% were Female; and the median age of the workforce was 38. Around 55% of employed persons in this industry were located in Greater Darwin.

Employment by industry, February 2025 and February 2024

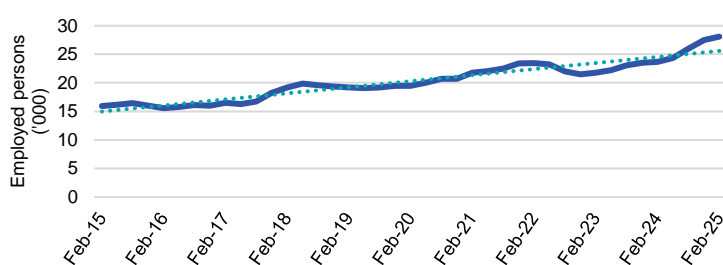


Source: ABS Labour Force Survey, Detailed, four quarter averages, February 2025. Note that total employment (four quarter averaged data) may not match data published in the Labour Market dashboards (6 month averaged data).

Note: For any enquiries related to the data in this report, contact RegionalWorkforceAssessment@jobsandskills.gov.au

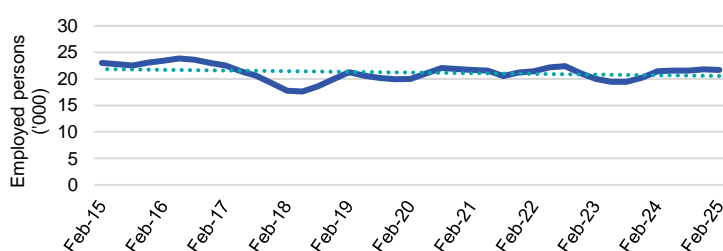
Five largest employing industries: key statistics

Health Care and Social Assistance



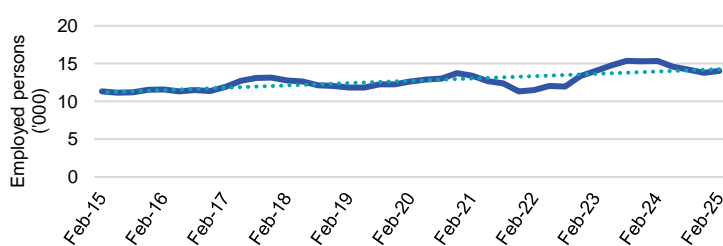
Number employed (Feb-25):	28,100
1 year employment change:	18.6%
5 year employment change:	44.1%
10 year employment change:	76.5%
Youth share of employment:	10.1%
Mature age share of employment:	14.8%

Public Administration and Safety



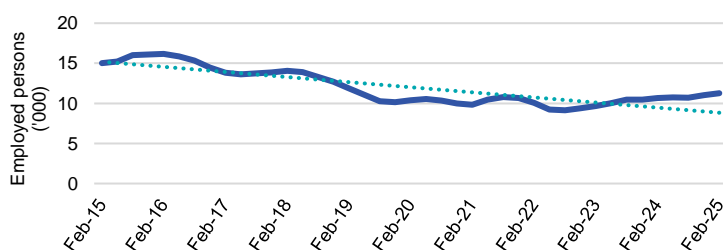
Number employed (Feb-25):	21,600
1 year employment change:	1.1%
5 year employment change:	8.3%
10 year employment change:	-5.9%
Youth share of employment:	15.1%
Mature age share of employment:	18.0%

Education and Training



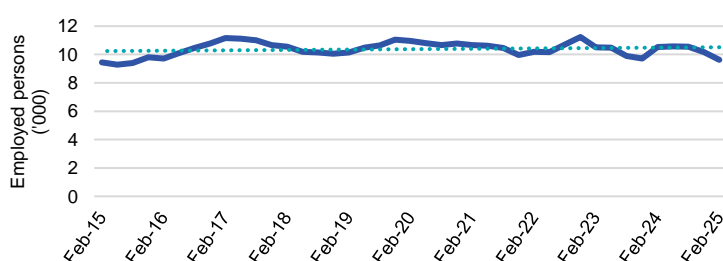
Number employed (Feb-25):	14,000
1 year employment change:	-8.7%
5 year employment change:	11.1%
10 year employment change:	23.9%
Youth share of employment:	6.6%
Mature age share of employment:	11.8%

Construction



Number employed (Feb-25):	11,300
1 year employment change:	5.9%
5 year employment change:	8.6%
10 year employment change:	-25.0%
Youth share of employment:	7.3%
Mature age share of employment:	8.4%

Retail Trade



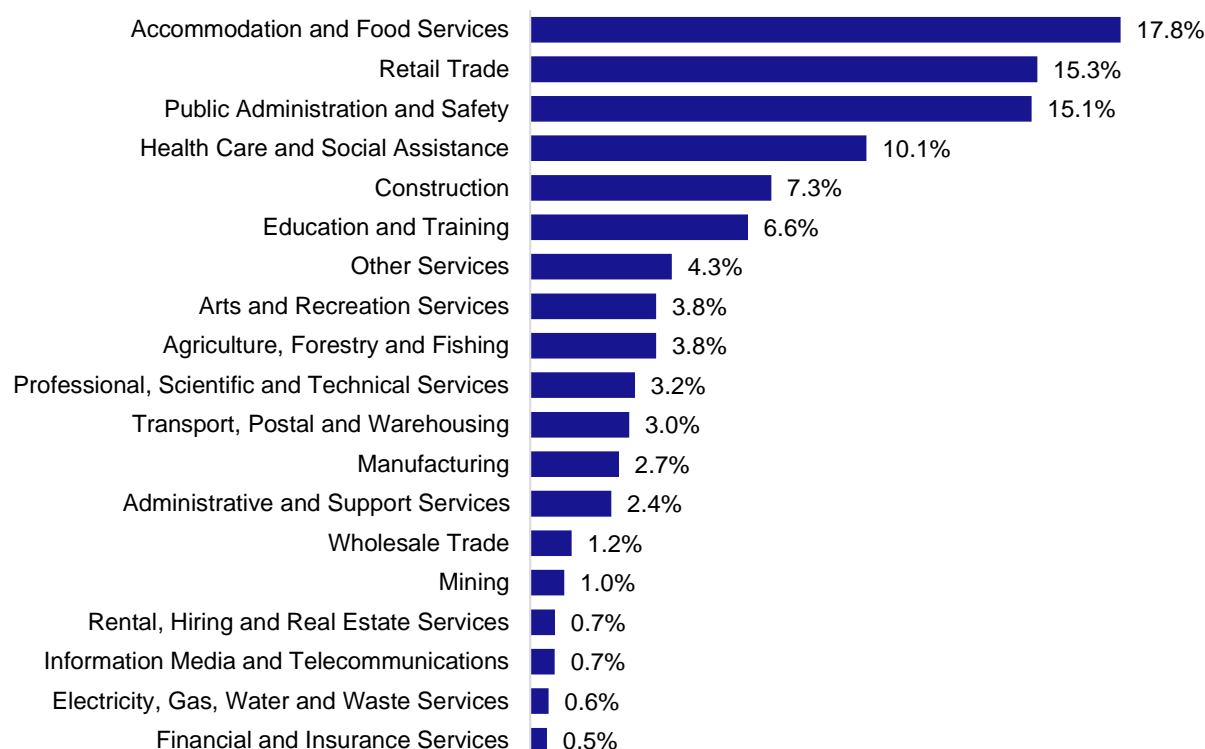
Number employed (Feb-25):	9,600
1 year employment change:	-8.5%
5 year employment change:	-12.1%
10 year employment change:	1.9%
Youth share of employment:	15.3%
Mature age share of employment:	6.3%

Source: ABS Labour Force Survey, Detailed, four quarter averages, February 2025, except youth and mature age data which are from the ABS Census of Population and Housing, 2021.

Note: In each chart, the solid line is the level of employment and the dotted line is a simple linear trend line for the 10 year period.

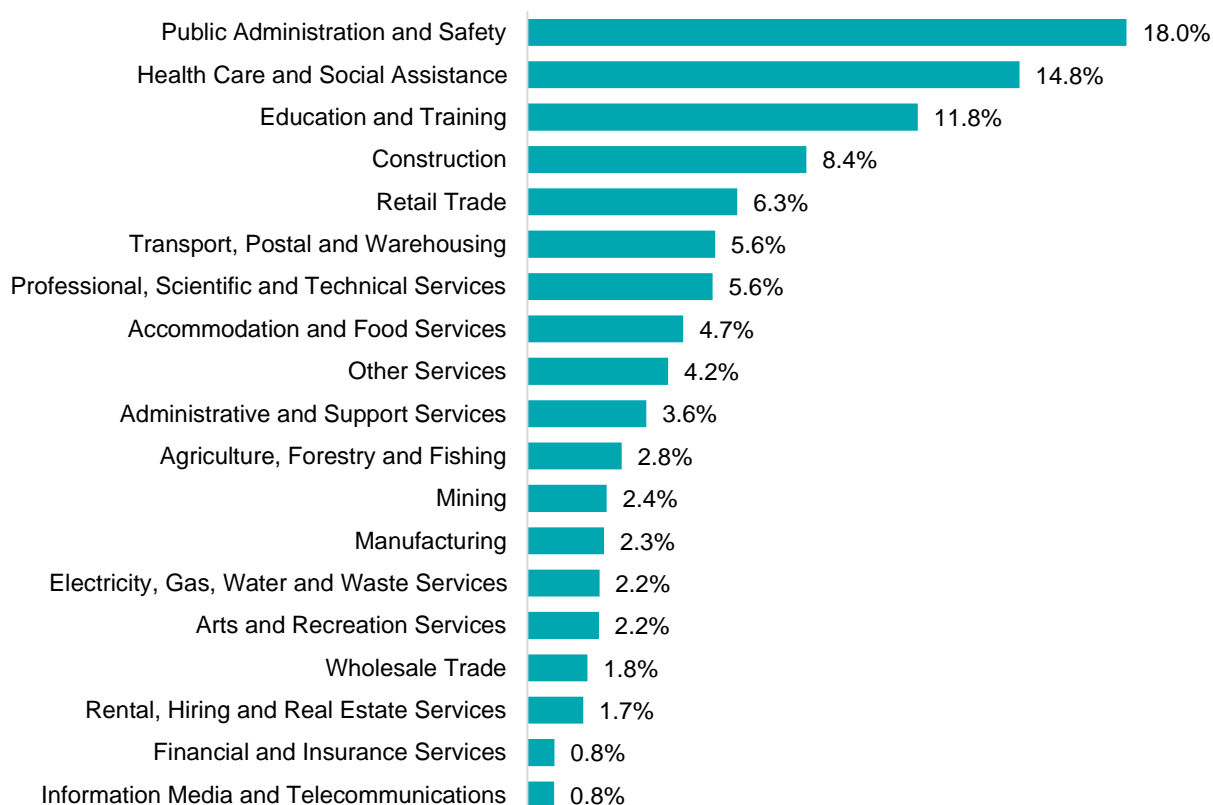
Employment characteristics by Industry

Which industries are youth (aged 15-24) employed in?



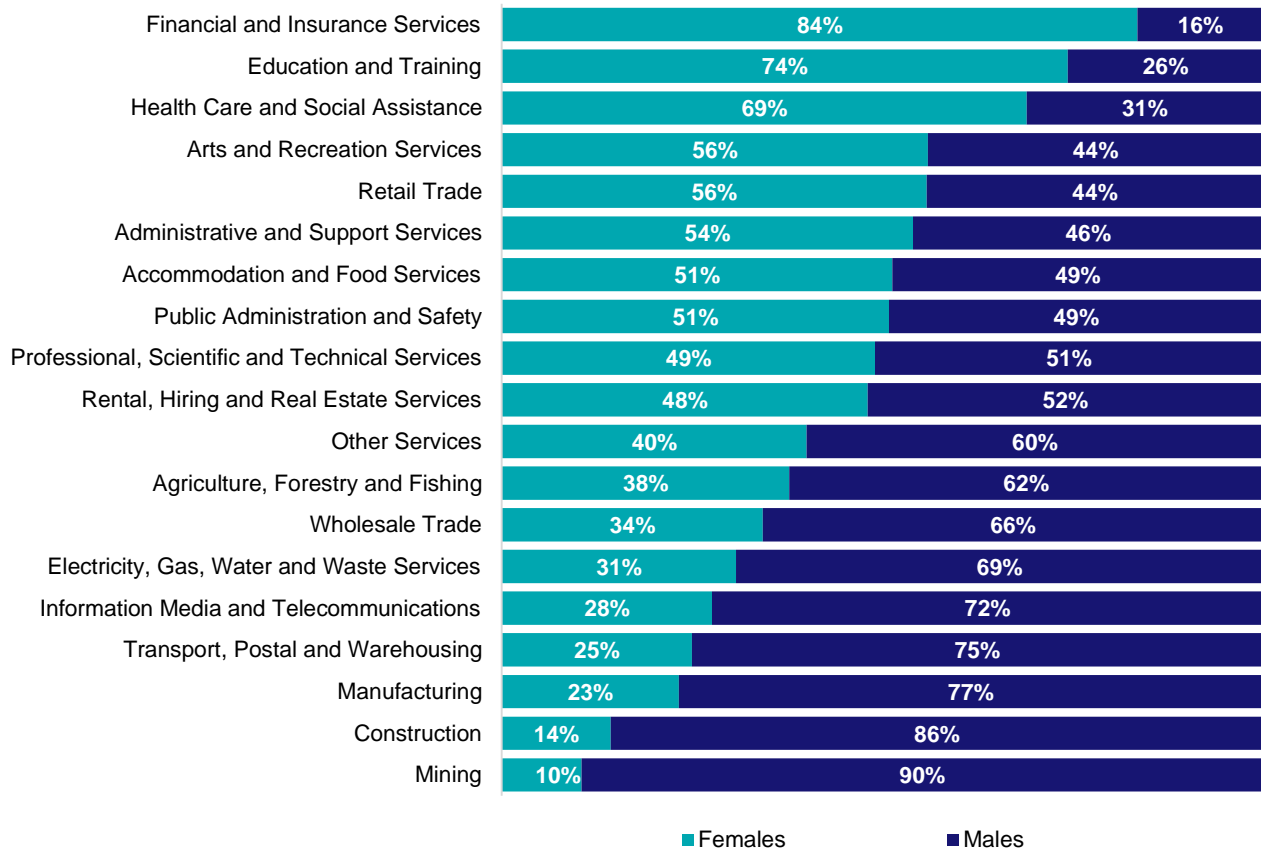
Source: ABS Census of Population and Housing, 2021.

Which industries are mature age persons (aged 55+) employed in?



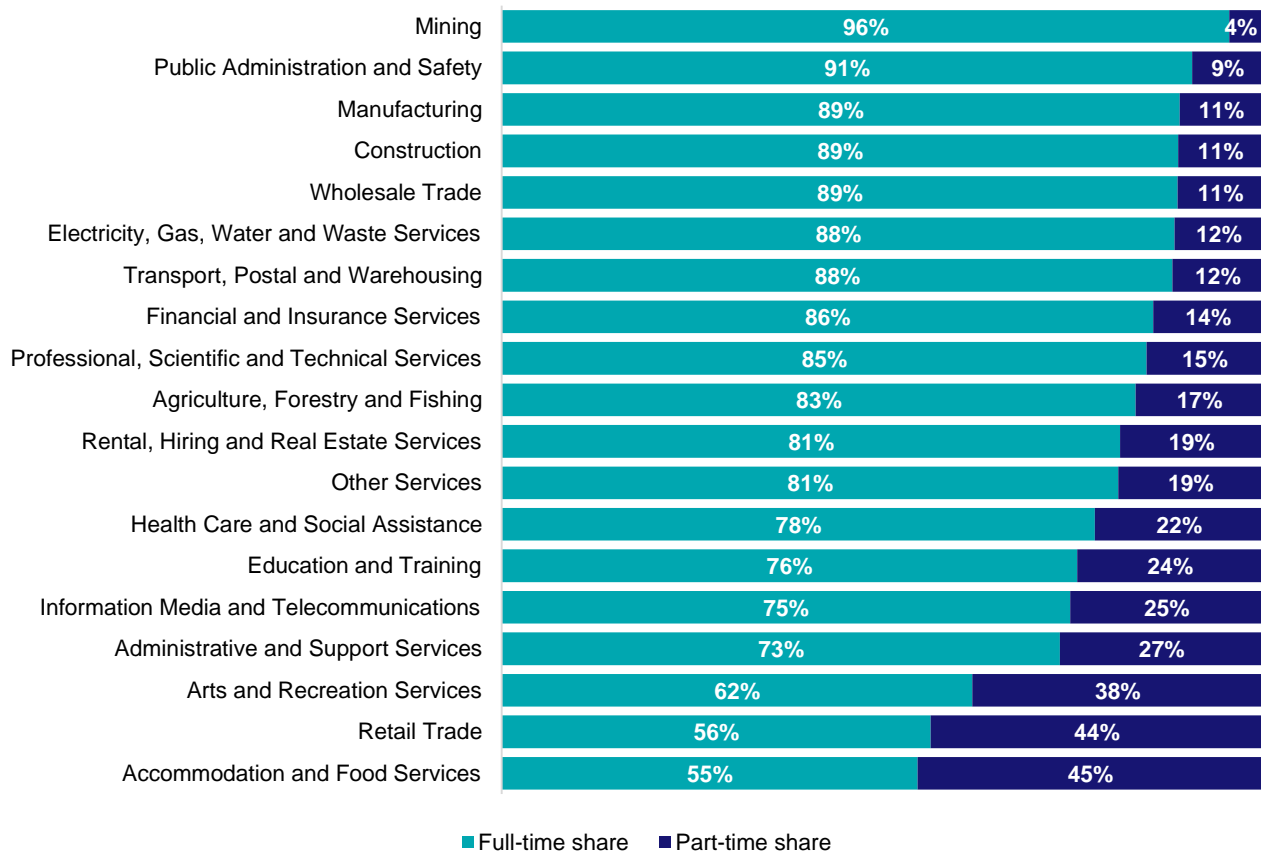
Source: ABS Census of Population and Housing, 2021.

Gender share by industry



Source: ABS Labour Force Survey, Detailed, four quarter averages, February 2025.

Full-time and part-time employment status by industry



Source: ABS Labour Force Survey, Detailed, four quarter averages, February 2025.

Appendix

Employment by industry, Northern Territory, February 2025

Industry (in order of size)	Share of emp't Feb-25 (%)	Share of emp't in Greater Darwin (%)	Share of emp't in Rest of NT (%)	Employed ('000)			1 year change		5 year change		Median age *
				Feb-25	Feb-24	Feb-20	('000)	%	('000)	%	
Health Care and Social Assistance	20.2	55.1	44.9	28.1	23.7	19.5	4.4	18.6	8.6	44.1	38
Public Administration and Safety	15.6	61.7	38.3	21.6	21.4	20.0	0.2	1.1	1.7	8.3	40
Education and Training	10.1	55.0	45.0	14.0	15.4	12.6	-1.3	-8.7	1.4	11.1	42
Construction	8.1	71.7	28.3	11.3	10.7	10.4	0.6	5.9	0.9	8.6	39
Retail Trade	6.9	64.7	35.3	9.6	10.5	11.0	-0.9	-8.5	-1.3	-12.1	33
Accommodation and Food Services	6.3	61.0	39.0	8.8	9.5	8.9	-0.7	-7.5	-0.1	-1.6	30
Professional, Scientific and Technical Services	5.0	81.7	18.3	6.9	8.2	7.1	-1.3	-15.5	-0.1	-2.0	39
Transport, Postal and Warehousing	4.6	69.0	31.0	6.3	5.7	6.2	0.6	10.8	0.1	2.1	42
Other Services	4.2	65.3	34.7	5.9	6.0	7.0	-0.1	-1.5	-1.1	-15.5	38
Arts and Recreation Services	3.1	58.1	41.9	4.2	4.5	3.5	-0.3	-6.1	0.7	20.9	35
Administrative and Support Services	2.8	71.9	28.1	3.8	3.9	4.9	-0.1	-1.7	-1.1	-22.2	41
Mining	2.5	62.6	37.4	3.5	4.0	3.3	-0.5	-12.3	0.2	5.0	42
Agriculture, Forestry and Fishing	2.4	34.8	65.2	3.4	2.8	3.3	0.6	20.1	0.1	3.1	38
Manufacturing	2.3	74.7	25.3	3.2	3.2	3.5	0.0	-0.2	-0.3	-8.6	40
Electricity, Gas, Water and Waste Services	1.9	82.5	17.5	2.7	1.9	1.8	0.8	41.0	0.9	54.1	44
Rental, Hiring and Real Estate Services	1.3	78.5	21.5	1.9	1.9	2.2	0.0	-1.4	-0.4	-15.9	43
Wholesale Trade	1.3	77.4	22.6	1.8	2.3	2.7	-0.5	-21.3	-0.9	-33.0	41
Information Media and Telecommunications	0.7	61.0	39.0	1.0	1.3	1.4	-0.3	-21.7	-0.3	-23.1	38
Financial and Insurance Services	0.7	90.8	9.2	0.9	1.4	1.5	-0.5	-33.9	-0.5	-37.3	39
All Industries	100.0	63.0	37.0	139.1	138.3	130.6	0.8	0.6	8.4	6.5	39

Source: ABS Labour Force Survey, Detailed, February 2025, four quarter averages. *Median age is from the ABS Census of Population and Housing, 2021.