

Employment Region Industry profile

Inner Metropolitan Melbourne Employment Region

Release date: 27 March 2025

Overview

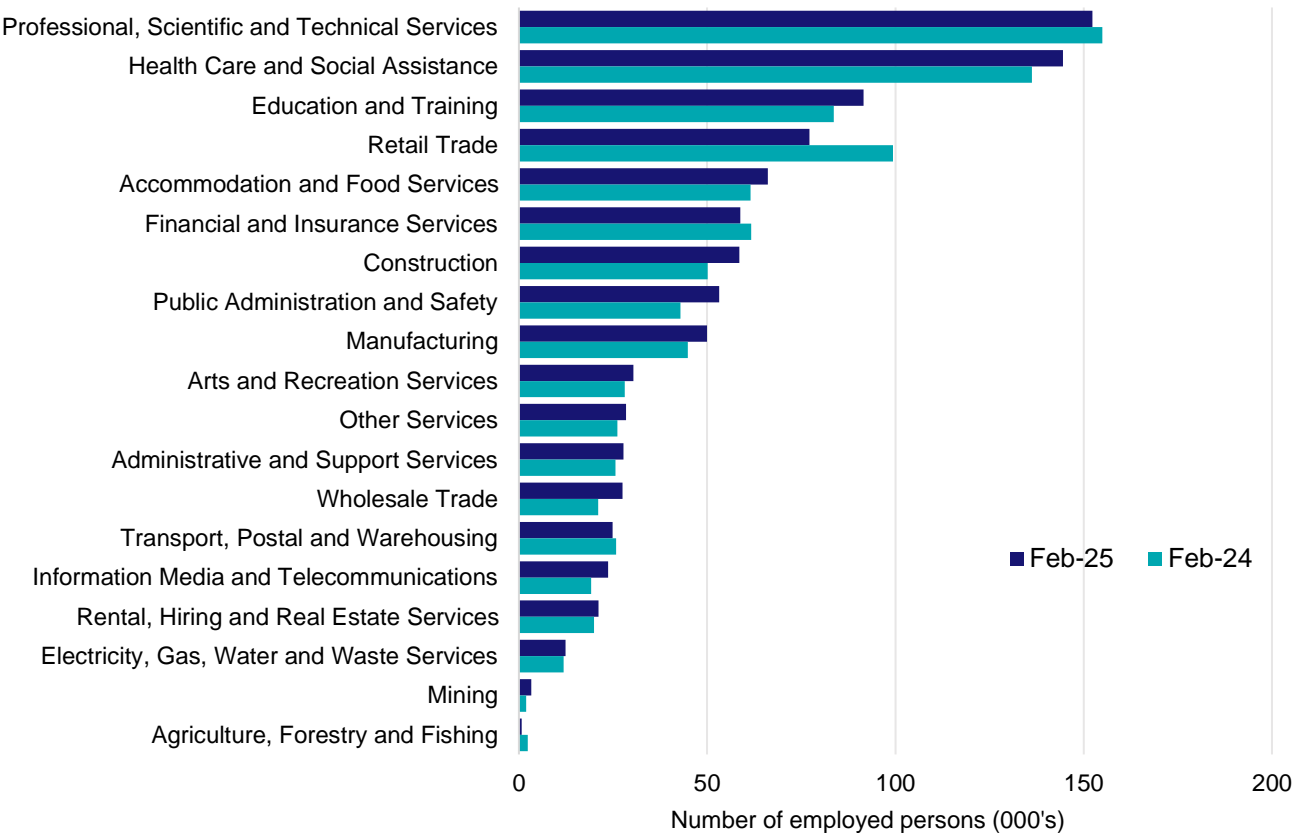
In February 2025, there were around 952,200 people employed in the Inner Metropolitan Melbourne Employment Region. The 5 largest employing industries in the region were Professional, Scientific and Technical Services, Health Care and Social Assistance, Education and Training, Retail Trade, and Accommodation and Food Services. Together these 5 industries accounted for 56% of employment in the region.

Over the year to February 2025, employment in:

- Professional, Scientific and Technical Services fell by 1.7% to stand at 152,300
- Health Care and Social Assistance rose by 6.0% to stand at 144,500
- Education and Training rose by 9.5% to stand at 91,500.

In Professional, Scientific and Technical Services in the Inner Metropolitan Melbourne Employment Region, 83% of workers were employed full-time; 58% were male; and the median age of the workforce was 38.

Employment by industry, February 2025 and February 2024



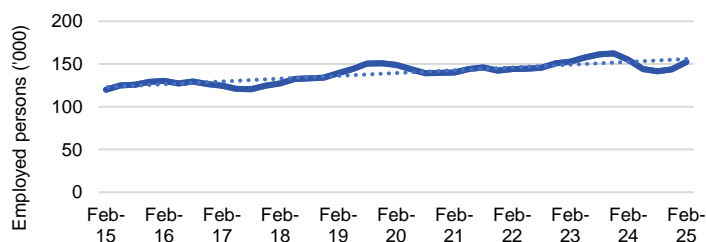
Source: ABS Labour Force Survey*, Detailed, four quarter averages, February 2025. Note that total employment for the region (four quarter averaged data) will not match data published in the Employment Region Labour Market dashboards (modelled estimates).

*ABS Labour Force Survey data are based on the combined SA4s of Melbourne - Inner; Melbourne - Inner East; and Melbourne - Inner South.

Notes: Data are the latest available. A high degree of caution should be exercised when interpreting data at the regional level, particularly in regards to percentage changes, given the volatility of the underlying data. For any enquiries related to the data in this report, please contact RegionalWorkforceAssessment@jobsandskills.gov.au

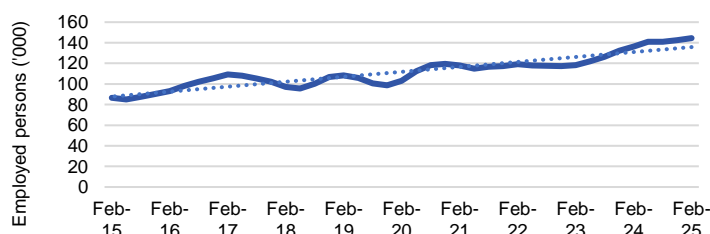
Five largest employing industries: key statistics

Professional, Scientific and Technical Services



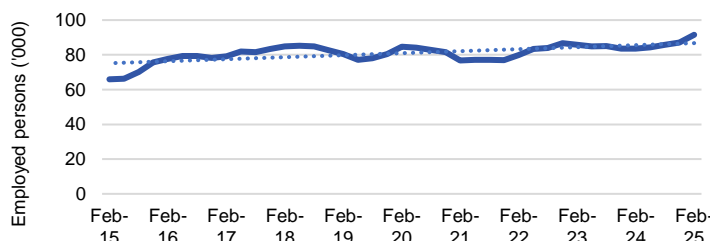
Number employed (Feb-25):	152,300
1 year employment change:	-1.7%
5 year employment change:	2.2%
10 year employment change:	27.0%
Youth share of employment:	8.2%
Mature age share of employment:	14.0%

Health Care and Social Assistance



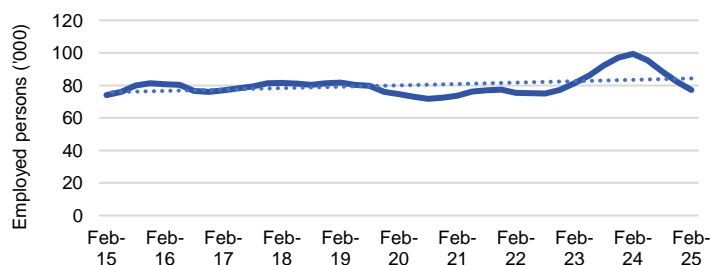
Number employed (Feb-25):	144,500
1 year employment change:	6.0%
5 year employment change:	40.2%
10 year employment change:	66.6%
Youth share of employment:	9.5%
Mature age share of employment:	17.7%

Education and Training



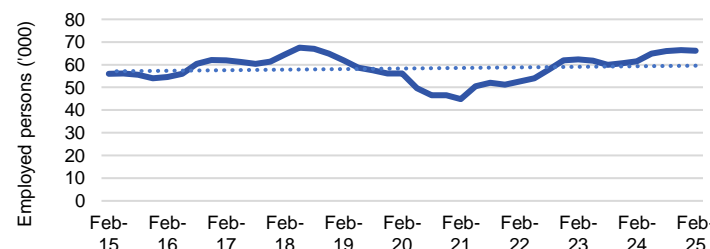
Number employed (Feb-25):	91,500
1 year employment change:	9.5%
5 year employment change:	8.1%
10 year employment change:	38.9%
Youth share of employment:	7.9%
Mature age share of employment:	12.9%

Retail Trade



Number employed (Feb-25):	77,100
1 year employment change:	-22.4%
5 year employment change:	3.3%
10 year employment change:	4.3%
Youth share of employment:	20.9%
Mature age share of employment:	6.9%

Accommodation and Food Services



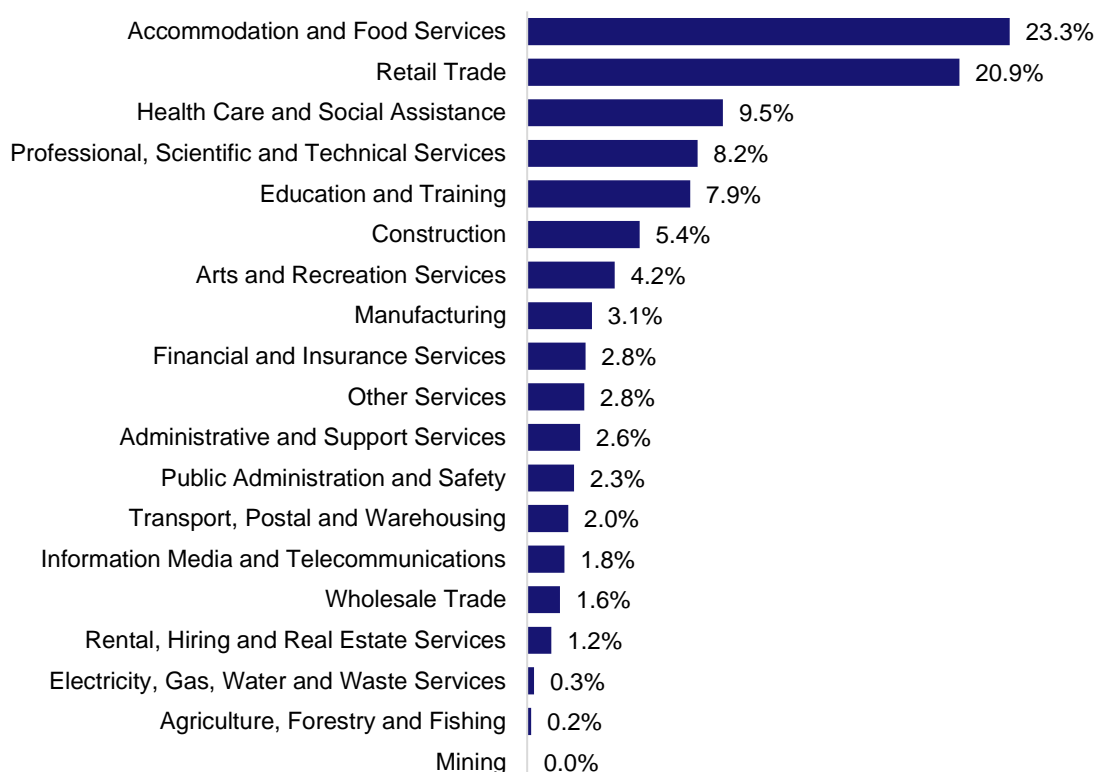
Number employed (Feb-25):	66,100
1 year employment change:	7.5%
5 year employment change:	17.8%
10 year employment change:	18.0%
Youth share of employment:	23.3%
Mature age share of employment:	2.9%

Source: ABS Labour Force Survey, Detailed, four quarter averages, February 2025, except youth and mature age data which are from the ABS Census of Population and Housing, 2021.

Notes: In each chart, the solid line is the level of employment and the dotted line is a simple linear trend line for the 10 year period. Given the volatility of the underlying data, employment estimates should be treated with a high degree of caution. Particular focus should be placed on the employment series over time to ascertain more reliable long-term growth trends.

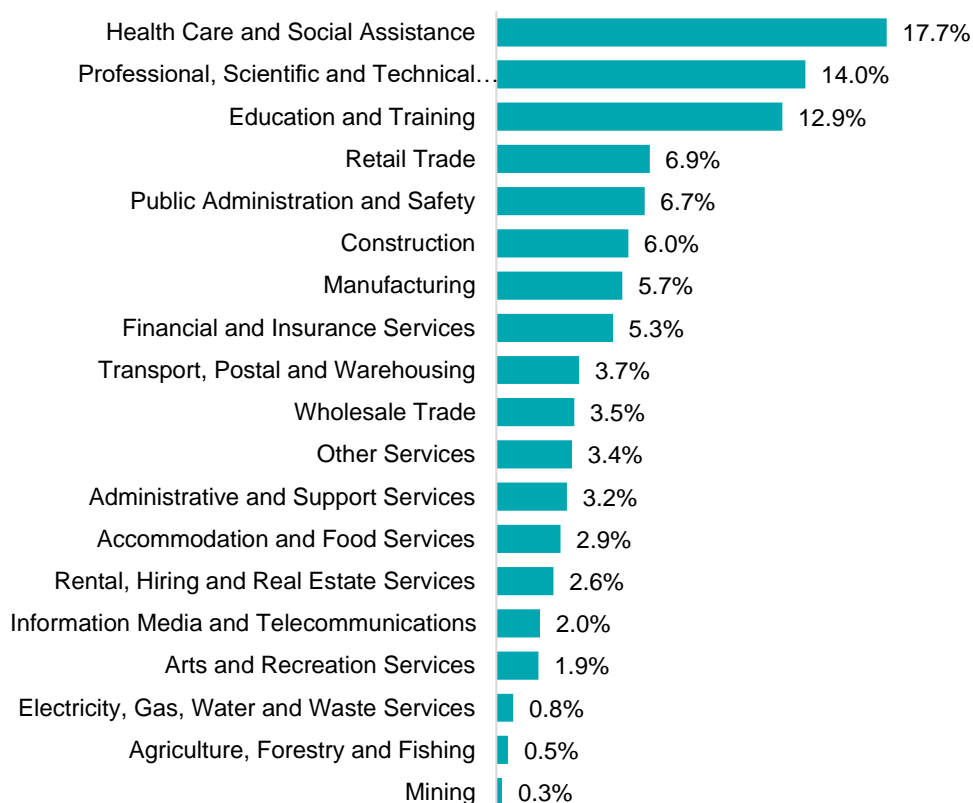
Employment characteristics by Industry

Which industries are youth (aged 15-24) employed in?



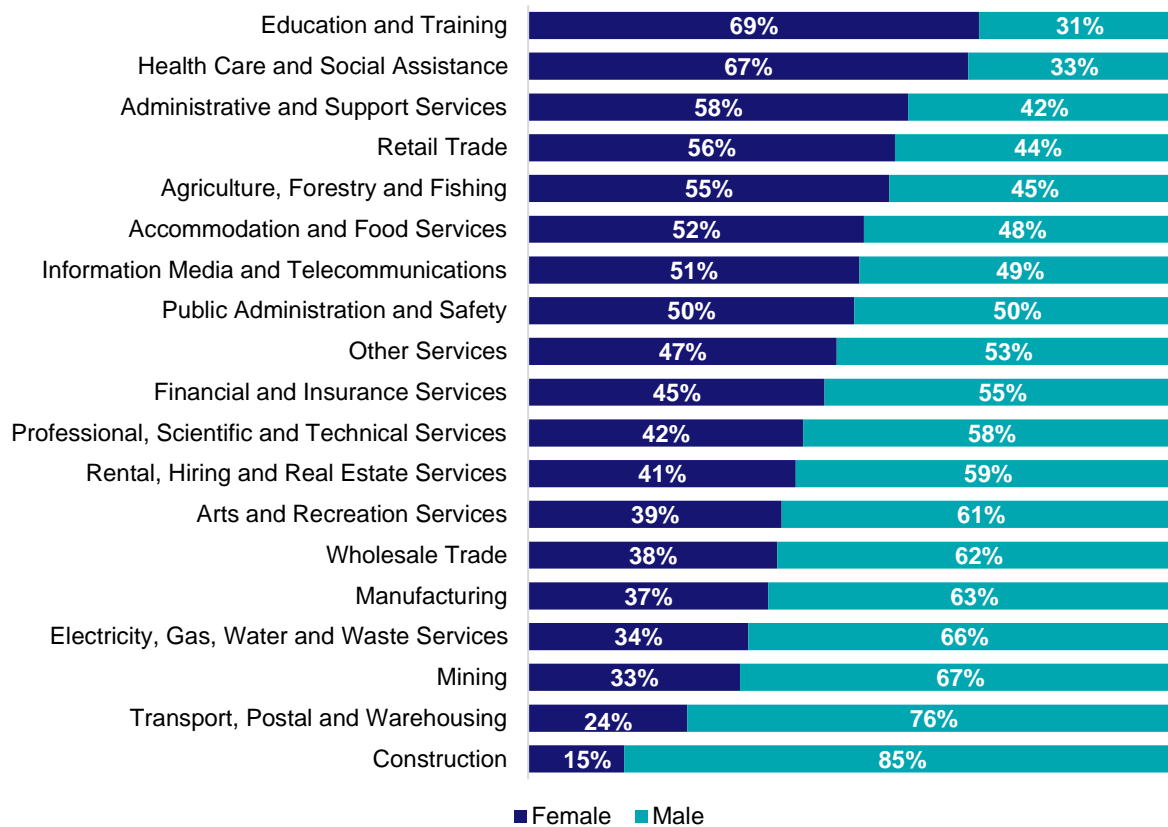
Source: ABS Census of Population and Housing, 2021.

Which industries are mature age persons (aged 55+) employed in?



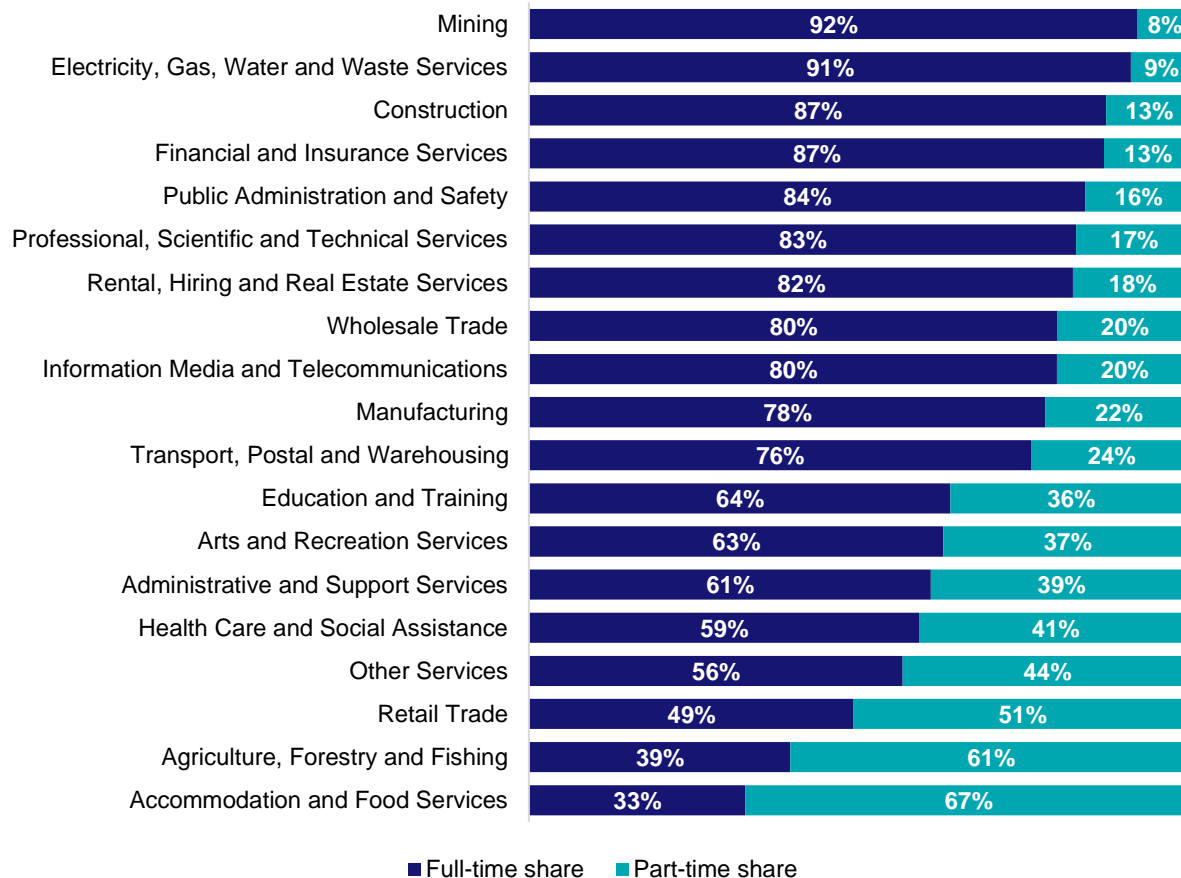
Source: ABS Census of Population and Housing, 2021. Note: SA2 level Census data have been aggregated to the Employment Region level.

Gender share by industry



Source: ABS Labour Force Survey, Detailed, four quarter averages, February 2025.

Full-time and part-time employment status by industry



Source: ABS Labour Force Survey, Detailed, four quarter averages, February 2025.

Appendix

Employment by industry, Inner Metropolitan Melbourne, February 2025

Industry (in order of size)	Share of employment in the region Feb-25 (%)	Employed ('000)			Full-time share %	Part-time share %	Median age *
		Feb-25	Feb-24	Feb-20			
Professional, Scientific and Technical Services	16.0	152.3	154.9	149.0	82.6	17.4	38
Health Care and Social Assistance	15.2	144.5	136.3	103.1	58.9	41.1	40
Education and Training	9.6	91.5	83.6	84.7	63.6	36.4	41
Retail Trade	8.1	77.1	99.4	74.7	49.0	51.0	31
Accommodation and Food Services	6.9	66.1	61.5	56.1	32.7	67.3	26
Financial and Insurance Services	6.2	58.8	61.7	51.1	86.8	13.2	40
Construction	6.1	58.5	50.1	47.0	87.2	12.8	37
Public Administration and Safety	5.6	53.2	42.9	45.9	84.0	16.0	42
Manufacturing	5.2	49.9	44.9	45.6	78.0	22.0	42
Arts and Recreation Services	3.2	30.4	28.1	27.3	62.6	37.4	33
Other Services	3.0	28.4	26.1	24.9	56.4	43.6	38
Administrative and Support Services	2.9	27.7	25.6	31.2	60.7	39.3	37
Wholesale Trade	2.9	27.5	21.1	31.0	79.8	20.2	43
Transport, Postal and Warehousing	2.6	24.9	25.8	27.3	75.8	24.2	41
Information Media and Telecommunications	2.5	23.7	19.2	21.2	79.7	20.3	38
Rental, Hiring and Real Estate Services	2.2	21.1	20.0	21.4	82.1	17.9	40
Electricity, Gas, Water and Waste Services	1.3	12.4	11.9	8.0	90.9	9.1	39
Mining	0.3	3.3	2.0	1.9	91.9	8.1	45
Agriculture, Forestry and Fishing	0.1	0.7	2.4	2.3	39.5	60.5	39
All industries	100.0	952.2	917.4	853.5	69.1	30.9	38

Source: ABS Labour Force Survey, Detailed, four quarter averages, February 2025. *Median age is from the ABS Census of Population and Housing, 2021. Median age has been derived using aggregated SA2s for the Employment Region.

Note: Small cells should be viewed with caution due to small sample sizes and regional volatility.