



Australian Government



Jobs and Skills Australia

Industry profile

Tasmania

Release date: 27 March 2025

Overview

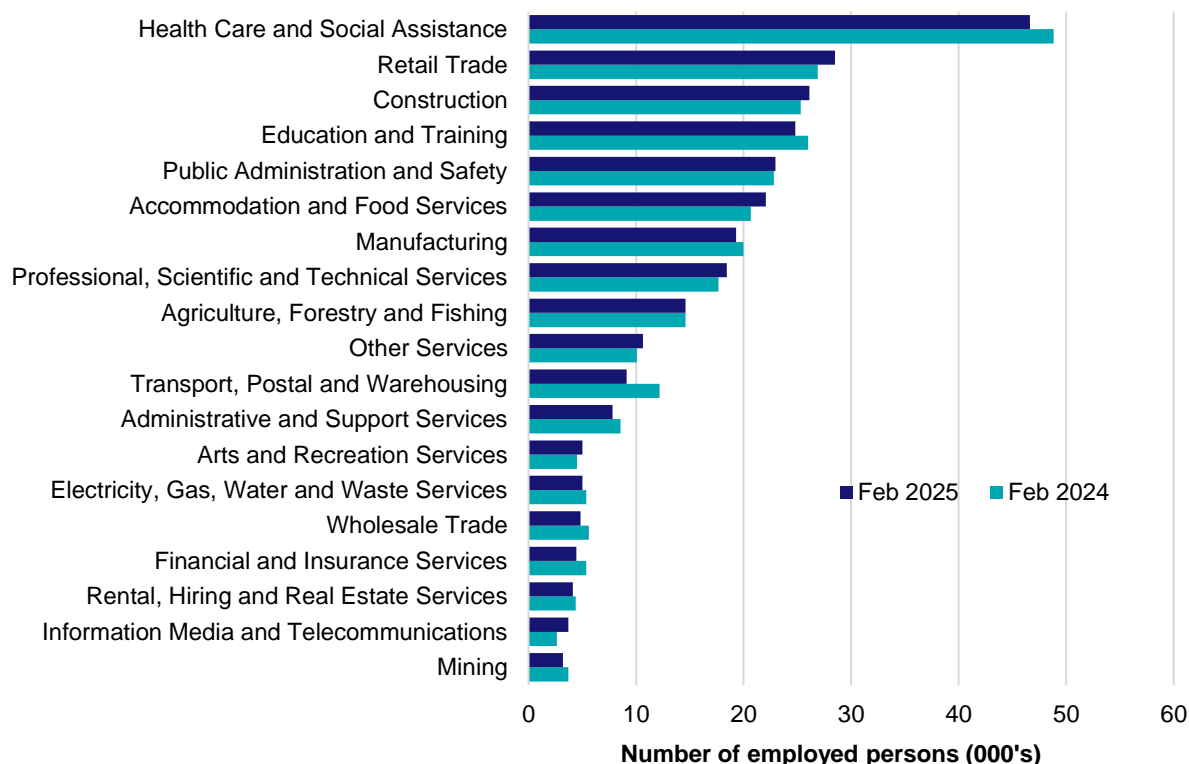
In February 2025, there were around 281,300 people employed in Tasmania. The 5 largest employing industries in Tasmania were Health Care and Social Assistance, Retail Trade, Construction, Education and Training and Public Administration and Safety. Together these 5 industries accounted for 53% of all employment.

Over the year to February 2025, employment in:

- Health Care and Social Assistance fell by 4.5% to stand at 46,600
- Retail Trade rose by 6.0% to stand at 28,500
- Construction rose by 3.2% to stand at 26,100.

In Health Care and Social Assistance in Tasmania, 51% of workers were employed part-time; 75% were Female; and the median age of the workforce was 43. Around 51% of employed persons in this industry were located in Greater Hobart.

Employment by industry, February 2025 and February 2024

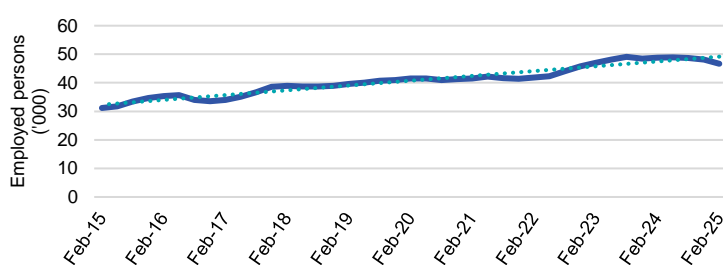


Source: ABS Labour Force Survey, Detailed, four quarter averages, February 2025. Note that total employment (four quarter averaged data) may not match data published in the Labour Market dashboards (6 month averaged data).

Note: For any enquiries related to the data in this report, contact RegionalWorkforceAssessment@jobsandskills.gov.au

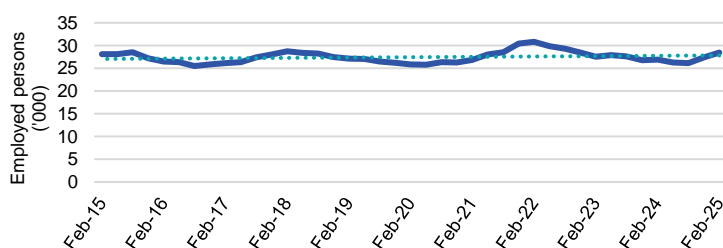
Five largest employing industries: key statistics

Health Care and Social Assistance



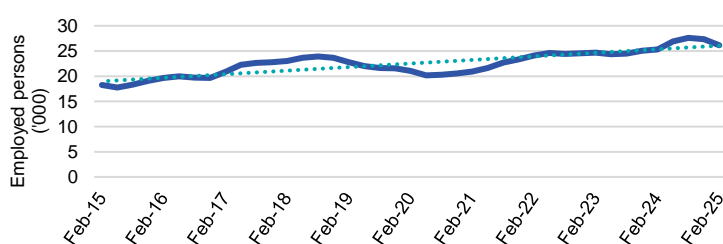
Number employed (Feb-25):	46,600
1 year employment change:	-4.5%
5 year employment change:	12.4%
10 year employment change:	49.6%
Youth share of employment:	10.2%
Mature age share of employment:	18.6%

Retail Trade



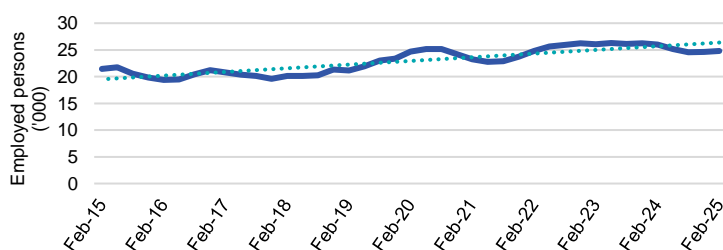
Number employed (Feb-25):	28,500
1 year employment change:	6.0%
5 year employment change:	10.1%
10 year employment change:	1.4%
Youth share of employment:	20.4%
Mature age share of employment:	7.5%

Construction



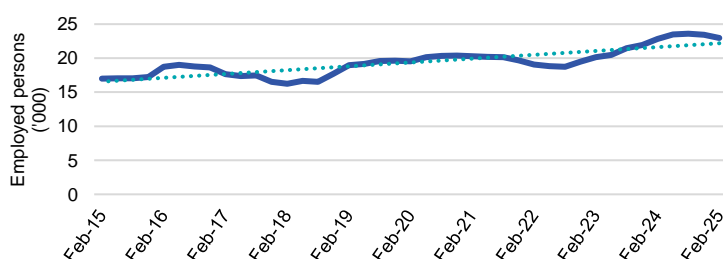
Number employed (Feb-25):	26,100
1 year employment change:	3.2%
5 year employment change:	24.3%
10 year employment change:	43.3%
Youth share of employment:	11.1%
Mature age share of employment:	7.8%

Education and Training



Number employed (Feb-25):	24,800
1 year employment change:	-4.5%
5 year employment change:	0.5%
10 year employment change:	15.8%
Youth share of employment:	4.8%
Mature age share of employment:	10.8%

Public Administration and Safety



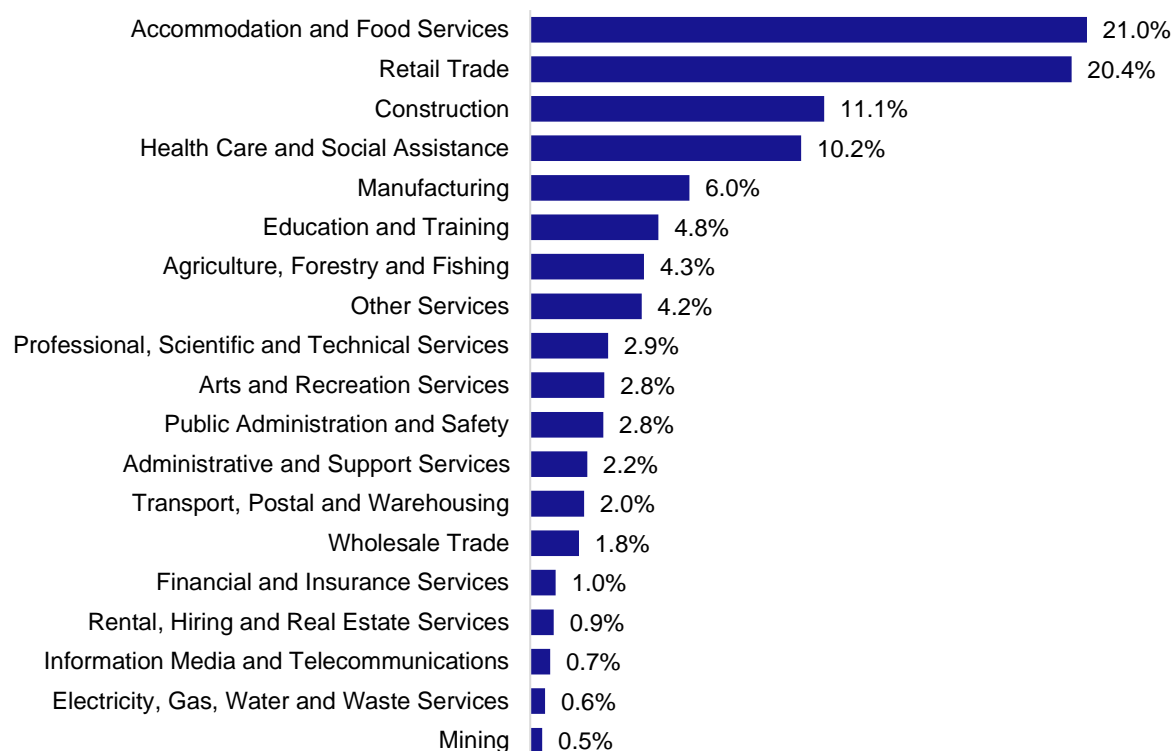
Number employed (Feb-25):	23,000
1 year employment change:	0.7%
5 year employment change:	17.6%
10 year employment change:	35.0%
Youth share of employment:	2.8%
Mature age share of employment:	8.0%

Source: ABS Labour Force Survey, Detailed, four quarter averages, February 2025, except youth and mature age data which are from the ABS Census of Population and Housing, 2021.

Note: In each chart, the solid line is the level of employment and the dotted line is a simple linear trend line for the 10 year period.

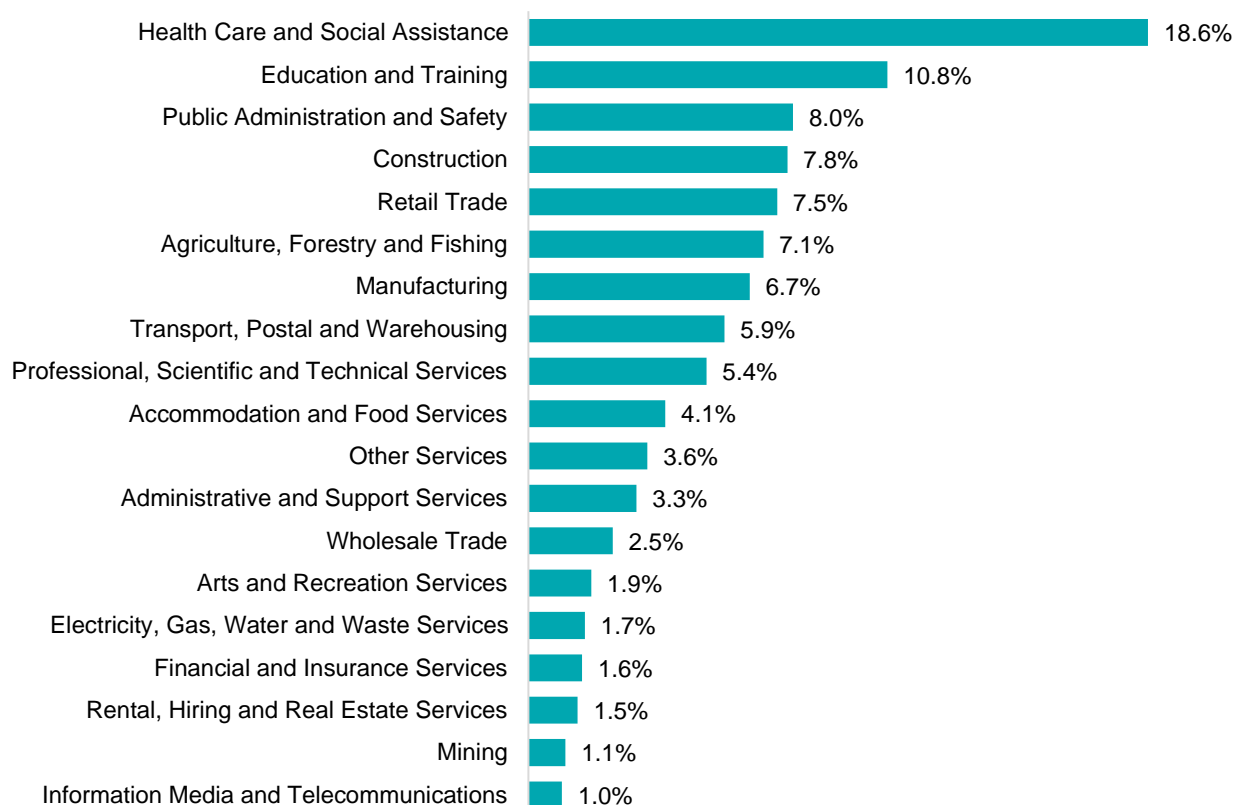
Employment characteristics by Industry

Which industries are youth (aged 15-24) employed in?



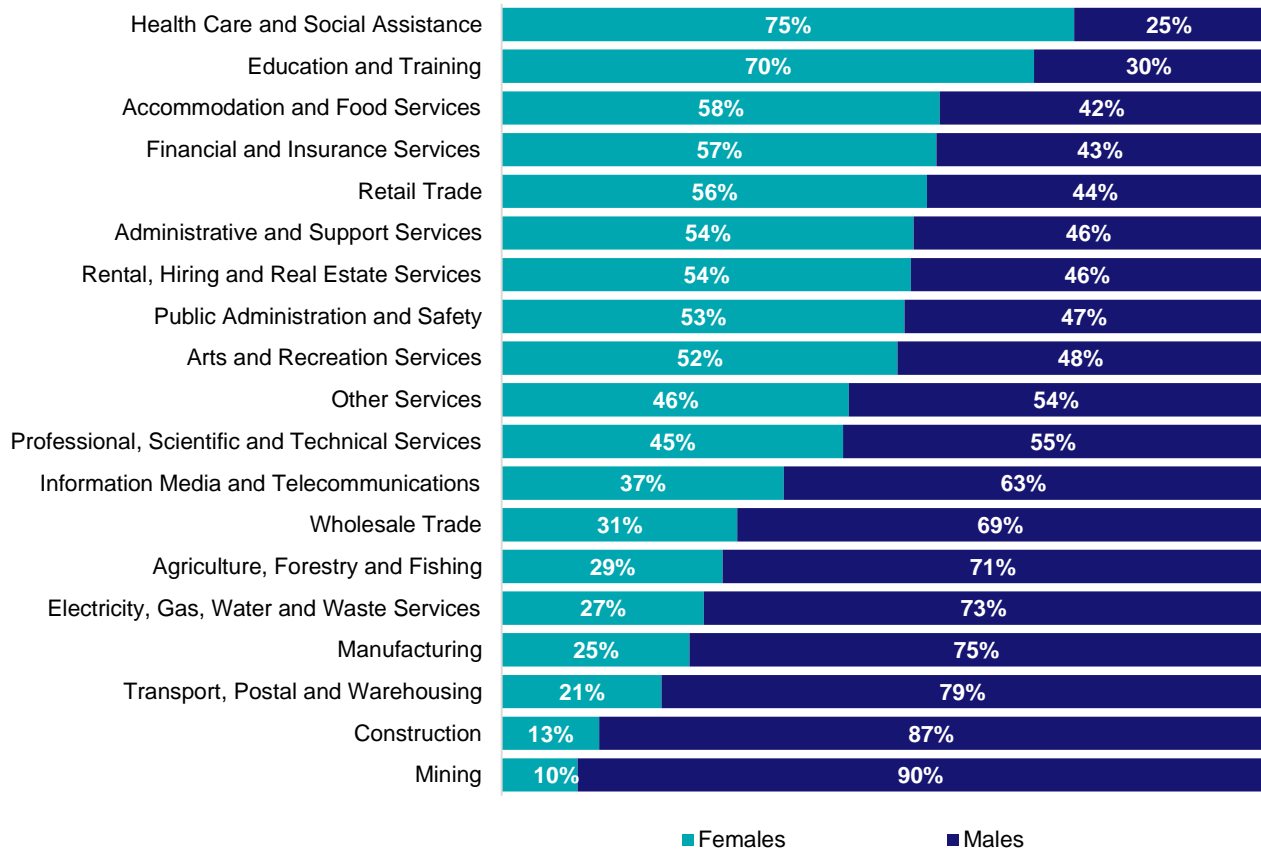
Source: ABS Census of Population and Housing, 2021.

Which industries are mature age persons (aged 55+) employed in?



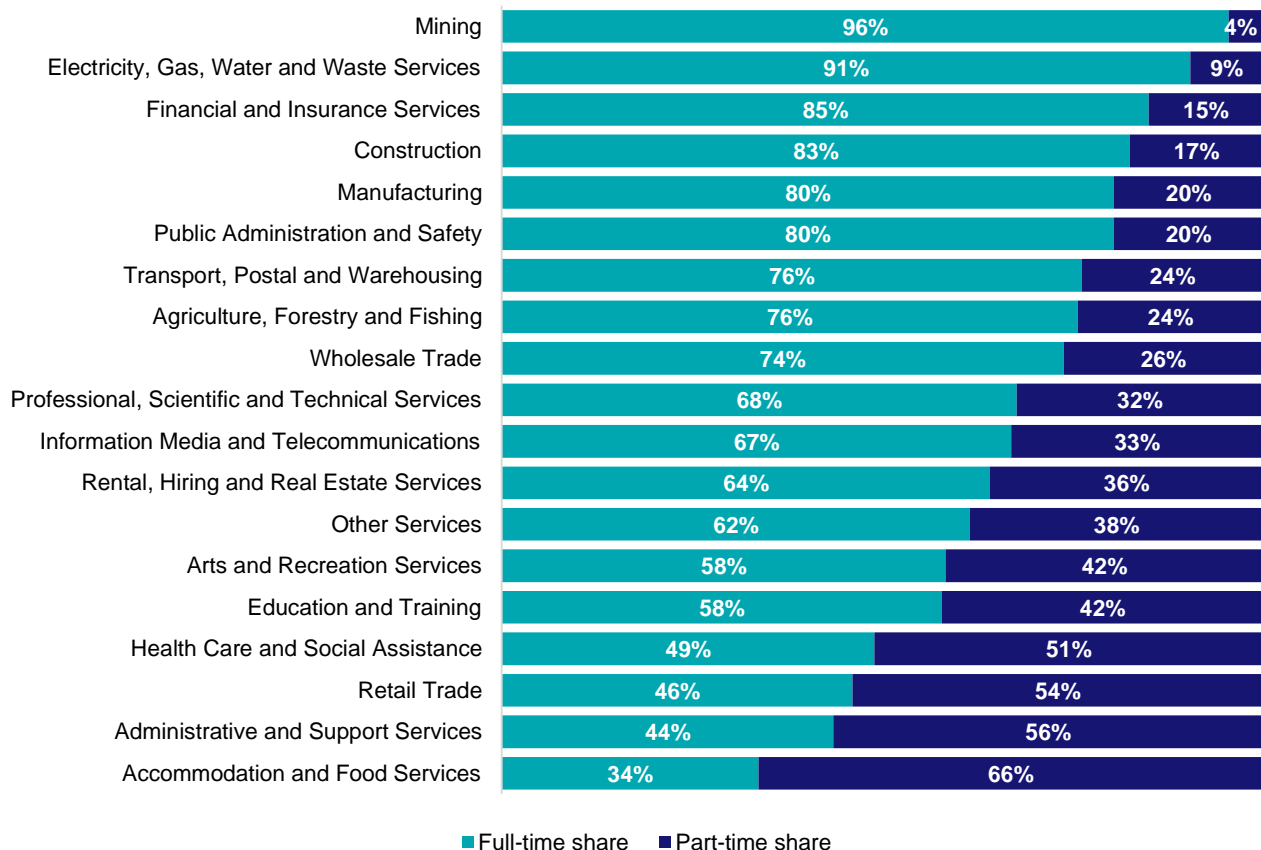
Source: ABS Census of Population and Housing, 2021.

Gender share by industry



Source: ABS Labour Force Survey, Detailed, four quarter averages, February 2025.

Full-time and part-time employment status by industry



Source: ABS Labour Force Survey, Detailed, four quarter averages, February 2025.

Appendix

Employment by industry, Tasmania, February 2025

Industry (in order of size)	Share of emp't Feb-25 (%)	Share of emp't in Greater Hobart (%)	Share of emp't in Rest of TAS (%)	Employed ('000)			1 year change		5 year change		Median age *
				Feb-25	Feb-24	Feb-20	('000)	%	('000)	%	
Health Care and Social Assistance	16.6	51.5	48.5	46.6	48.8	41.5	-2.2	-4.5	5.1	12.4	43
Retail Trade	10.1	45.0	55.0	28.5	26.9	25.9	1.6	6.0	2.6	10.1	34
Construction	9.3	43.8	56.2	26.1	25.3	21.0	0.8	3.2	5.1	24.3	38
Education and Training	8.8	51.9	48.1	24.8	26.0	24.7	-1.2	-4.5	0.1	0.5	45
Public Administration and Safety	8.2	61.7	38.3	23.0	22.8	19.5	0.2	0.7	3.4	17.6	46
Accommodation and Food Services	7.8	49.5	50.5	22.1	20.7	22.5	1.4	6.8	-0.4	-1.7	29
Manufacturing	6.9	31.0	69.0	19.3	20.0	18.6	-0.7	-3.4	0.7	3.9	42
Professional, Scientific and Technical Services	6.6	55.7	44.3	18.4	17.7	15.3	0.8	4.4	3.1	20.5	42
Agriculture, Forestry and Fishing	5.2	18.2	81.8	14.6	14.6	15.5	0.0	0.1	-0.9	-5.9	44
Other Services	3.8	46.5	53.5	10.6	10.1	9.6	0.6	5.5	1.0	10.9	39
Transport, Postal and Warehousing	3.2	32.7	67.3	9.1	12.2	10.8	-3.1	-25.2	-1.7	-15.6	47
Administrative and Support Services	2.8	41.6	58.4	7.8	8.5	6.6	-0.7	-8.7	1.2	18.9	43
Arts and Recreation Services	1.8	52.7	47.3	5.0	4.5	6.5	0.5	11.1	-1.5	-23.0	40
Electricity, Gas, Water and Waste Services	1.8	52.2	47.8	5.0	5.4	3.3	-0.4	-6.7	1.7	53.1	44
Wholesale Trade	1.7	44.1	55.9	4.8	5.6	5.8	-0.8	-13.5	-1.0	-16.6	44
Financial and Insurance Services	1.6	66.7	33.3	4.4	5.4	5.4	-0.9	-17.4	-0.9	-17.1	41
Rental, Hiring and Real Estate Services	1.5	44.4	55.6	4.1	4.4	3.1	-0.3	-5.9	1.0	32.7	45
Information Media and Telecommunications	1.3	56.0	44.0	3.7	2.6	3.1	1.1	41.8	0.6	20.3	42
Mining	1.1	18.5	81.5	3.2	3.7	2.9	-0.5	-14.0	0.3	9.6	44
All Industries	100.0	46.6	53.4	281.3	285.1	261.4	-3.8	-1.3	19.9	7.6	41

Source: ABS Labour Force Survey, Detailed, February 2025, four quarter averages. *Median age is from the ABS Census of Population and Housing, 2021.

Employment Region Industry profile

Hobart and Southern Tasmania Employment Region

Release date: 27 March 2025

Overview

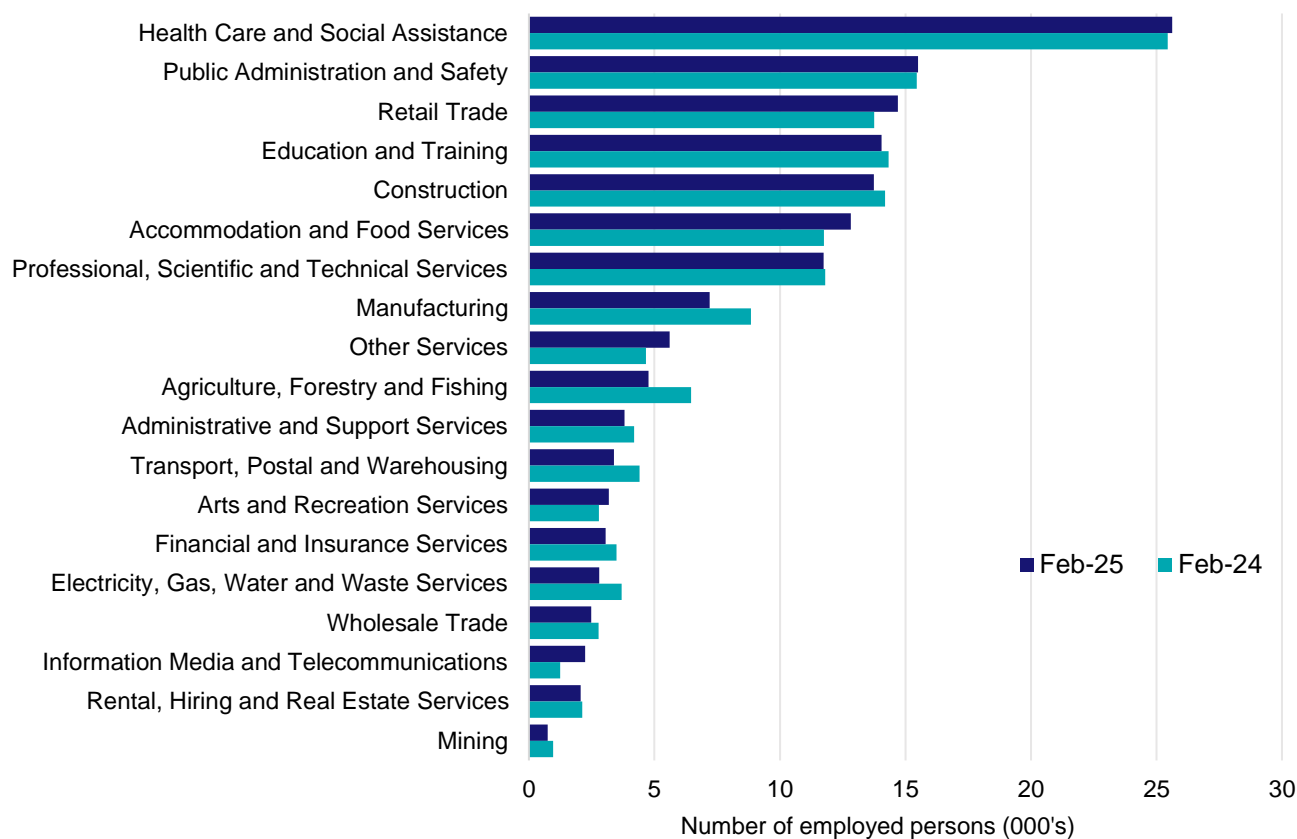
In February 2025, there were around 149,500 people employed in the Hobart and Southern Tasmania Employment Region. The 5 largest employing industries in the region were Health Care and Social Assistance, Public Administration and Safety, Retail Trade, Education and Training, and Construction. Together these 5 industries accounted for 56% of employment in the region.

Over the year to February 2025, employment in:

- Health Care and Social Assistance rose by 0.7% to stand at 25,600
- Public Administration and Safety rose by 0.3% to stand at 15,500
- Retail Trade rose by 6.9% to stand at 14,700.

In Health Care and Social Assistance in the Hobart and Southern Tasmania Employment Region, 50% of workers were employed full-time; 73% were female; and the median age of the workforce was 41.

Employment by industry, February 2025 and February 2024



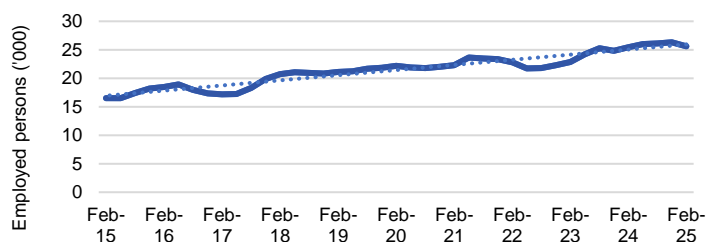
Source: ABS Labour Force Survey*, Detailed, four quarter averages, February 2025. Note that total employment for the region (four quarter averaged data) will not match data published in the Employment Region Labour Market dashboards (modelled estimates).

*ABS Labour Force Survey data are based on the combined SA4s of Hobart and South East.

Notes: Data are the latest available. A high degree of caution should be exercised when interpreting data at the regional level, particularly in regards to percentage changes, given the volatility of the underlying data. For any enquiries related to the data in this report, please contact RegionalWorkforceAssessment@jobsandskills.gov.au

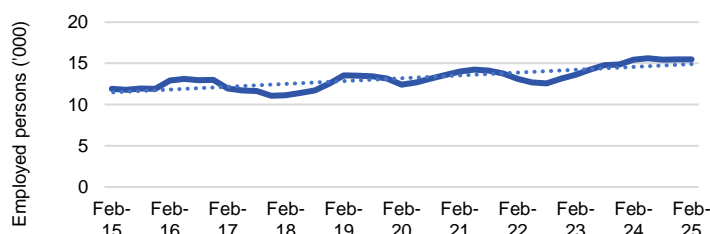
Five largest employing industries: key statistics

Health Care and Social Assistance



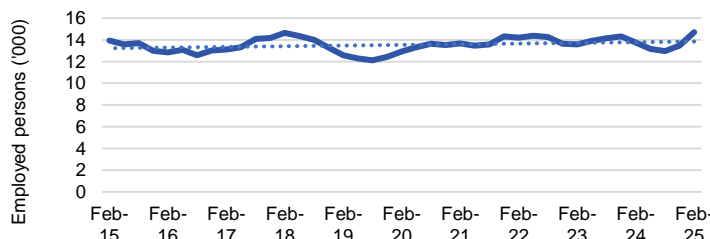
Number employed (Feb-25):	25,600
1 year employment change:	0.7%
5 year employment change:	15.6%
10 year employment change:	55.2%
Youth share of employment:	10.8%
Mature age share of employment:	18.6%

Public Administration and Safety



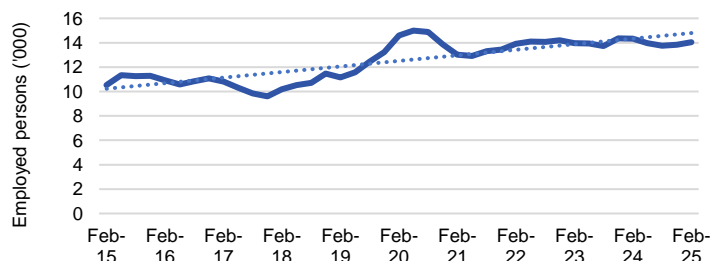
Number employed (Feb-25):	15,500
1 year employment change:	0.3%
5 year employment change:	24.9%
10 year employment change:	30.2%
Youth share of employment:	3.5%
Mature age share of employment:	10.6%

Retail Trade



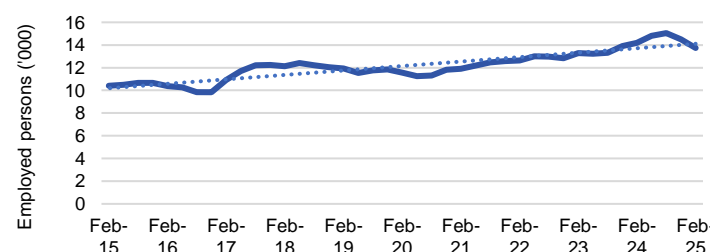
Number employed (Feb-25):	14,700
1 year employment change:	6.9%
5 year employment change:	13.6%
10 year employment change:	5.5%
Youth share of employment:	20.4%
Mature age share of employment:	6.9%

Education and Training



Number employed (Feb-25):	14,100
1 year employment change:	-1.9%
5 year employment change:	-3.7%
10 year employment change:	33.5%
Youth share of employment:	5.8%
Mature age share of employment:	11.8%

Construction



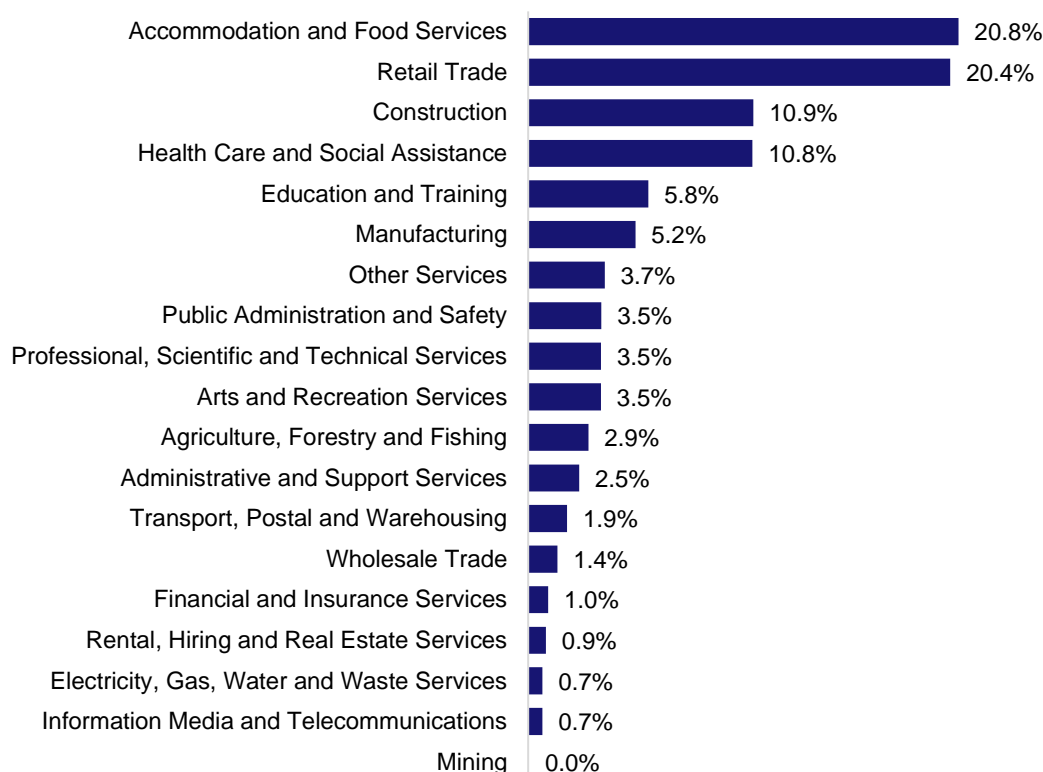
Number employed (Feb-25):	13,700
1 year employment change:	-3.2%
5 year employment change:	18.7%
10 year employment change:	32.1%
Youth share of employment:	10.9%
Mature age share of employment:	8.0%

Source: ABS Labour Force Survey, Detailed, four quarter averages, February 2025, except youth and mature age data which are from the ABS Census of Population and Housing, 2021.

Notes: In each chart, the solid line is the level of employment and the dotted line is a simple linear trend line for the 10 year period. Given the volatility of the underlying data, employment estimates should be treated with a high degree of caution. Particular focus should be placed on the employment series over time to ascertain more reliable long-term growth trends.

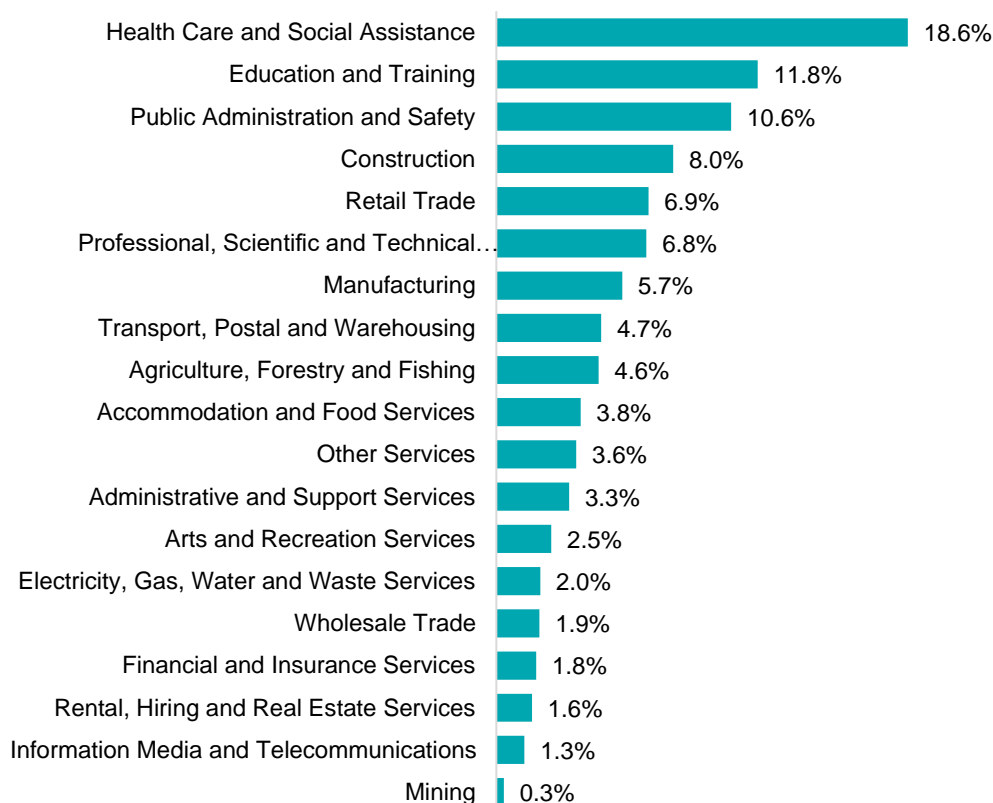
Employment characteristics by Industry

Which industries are youth (aged 15-24) employed in?



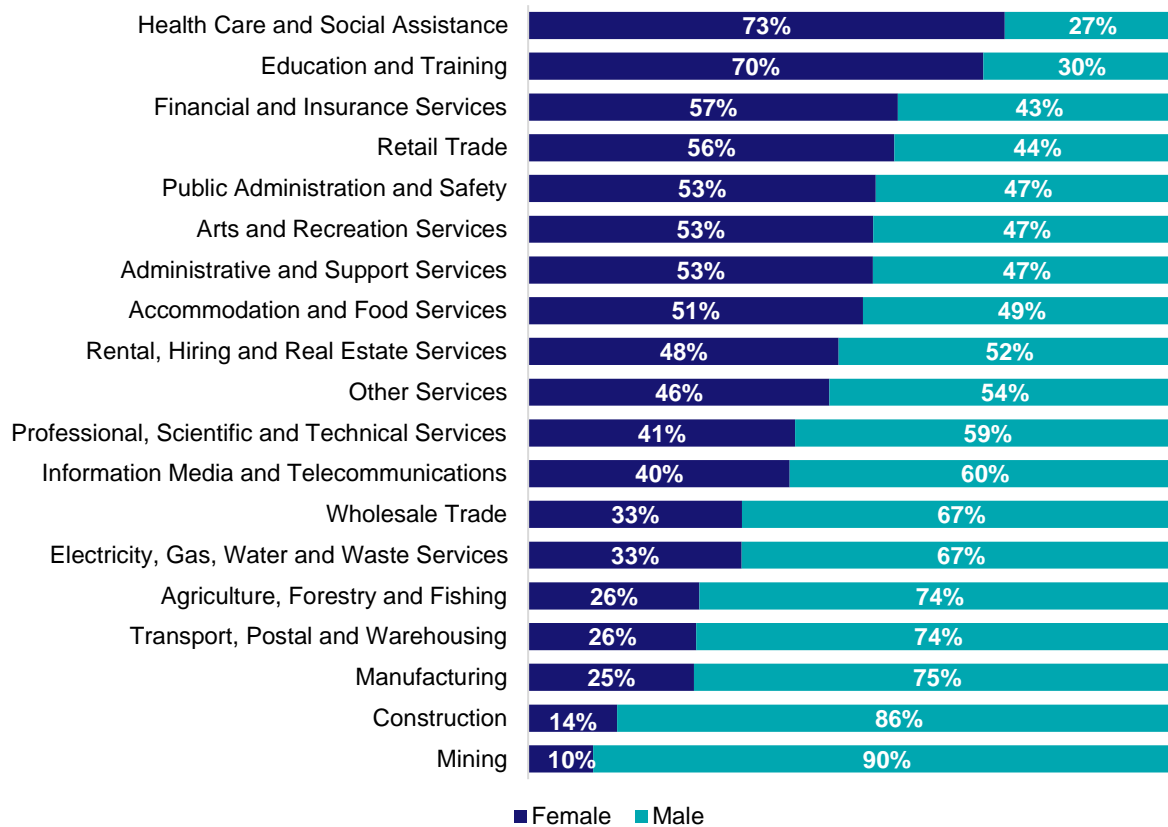
Source: ABS Census of Population and Housing, 2021.

Which industries are mature age persons (aged 55+) employed in?



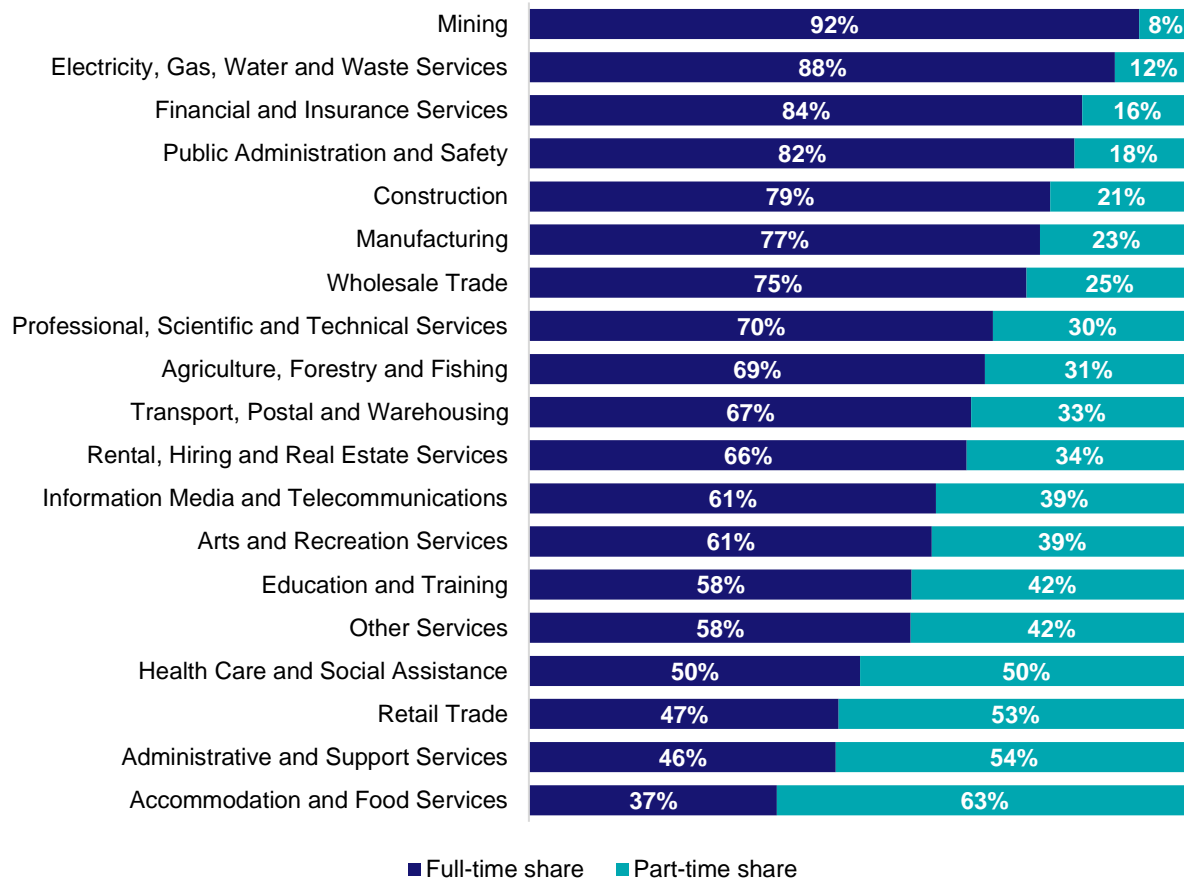
Source: ABS Census of Population and Housing, 2021. Note: SA2 level Census data have been aggregated to the Employment Region level.

Gender share by industry



Source: ABS Labour Force Survey, Detailed, four quarter averages, February 2025.

Full-time and part-time employment status by industry



Source: ABS Labour Force Survey, Detailed, four quarter averages, February 2025.

Appendix

Employment by industry, Hobart and Southern Tasmania, February 2025

Industry (in order of size)	Share of employment in the region Feb-25 (%)	Employed ('000)			Full-time share %	Part-time share %	Median age *
		Feb-25	Feb-24	Feb-20			
Health Care and Social Assistance	17.1	25.6	25.4	22.2	50.0	50.0	41
Public Administration and Safety	10.4	15.5	15.4	12.4	82.4	17.6	45
Retail Trade	9.8	14.7	13.7	12.9	46.8	53.2	32
Education and Training	9.4	14.1	14.3	14.6	57.8	42.2	44
Construction	9.2	13.7	14.2	11.6	78.7	21.3	38
Accommodation and Food Services	8.6	12.8	11.8	12.4	37.5	62.5	28
Professional, Scientific and Technical Services	7.9	11.7	11.8	10.1	70.0	30.0	41
Manufacturing	4.8	7.2	8.8	9.1	77.2	22.8	41
Other Services	3.7	5.6	4.7	4.8	57.6	42.4	38
Agriculture, Forestry and Fishing	3.2	4.8	6.5	5.5	68.8	31.2	42
Administrative and Support Services	2.5	3.8	4.2	3.0	46.3	53.7	41
Transport, Postal and Warehousing	2.3	3.4	4.4	4.6	66.8	33.2	44
Arts and Recreation Services	2.1	3.2	2.8	4.7	60.8	39.2	36
Financial and Insurance Services	2.0	3.1	3.5	2.9	83.6	16.4	40
Electricity, Gas, Water and Waste Services	1.9	2.8	3.7	2.0	88.5	11.5	42
Wholesale Trade	1.7	2.5	2.8	2.3	75.1	24.9	43
Information Media and Telecommunications	1.5	2.2	1.2	2.2	61.4	38.6	39
Rental, Hiring and Real Estate Services	1.4	2.1	2.1	2.0	66.1	33.9	47
Mining	0.5	0.7	1.0	0.4	92.1	7.9	49
All industries	100.0	149.5	152.4	139.7	62.0	38.0	40

Source: ABS Labour Force Survey, Detailed, four quarter averages, February 2025. *Median age is from the ABS Census of Population and Housing, 2021. Median age has been derived using aggregated SA2s for the Employment Region.

Note: Small cells should be viewed with caution due to small sample sizes and regional volatility.

Employment Region Industry profile

North and North Western Tasmania Employment Region

Release date: 27 March 2025

Overview

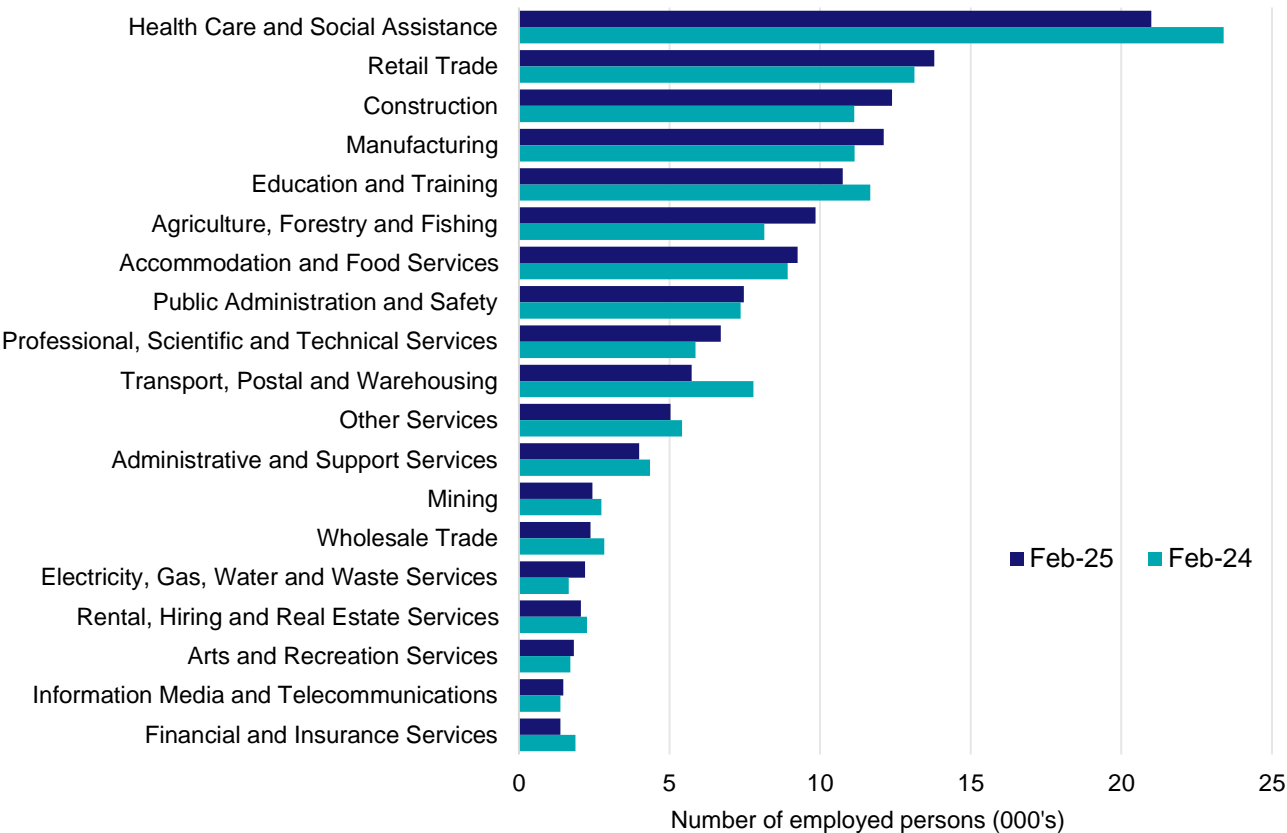
In February 2025, there were around 131,800 people employed in the North and North Western Tasmania Employment Region. The 5 largest employing industries in the region were Health Care and Social Assistance, Retail Trade, Construction, Manufacturing, and Education and Training. Together these 5 industries accounted for 53% of employment in the region.

Over the year to February 2025, employment in:

- Health Care and Social Assistance fell by 10.3% to stand at 21,000
- Retail Trade rose by 5.0% to stand at 13,800
- Construction rose by 11.3% to stand at 12,400.

In Health Care and Social Assistance in the North and North Western Tasmania Employment Region, 52% of workers were employed part-time; 78% were female; and the median age of the workforce was 44.

Employment by industry, February 2025 and February 2024



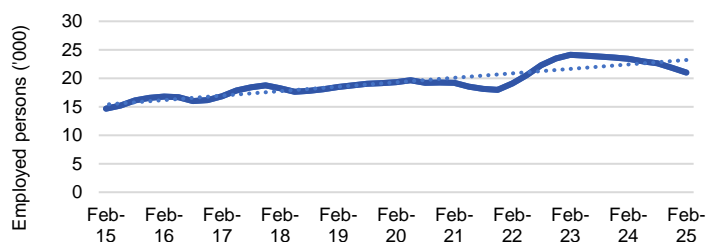
Source: ABS Labour Force Survey*, Detailed, four quarter averages, February 2025. Note that total employment for the region (four quarter averaged data) will not match data published in the Employment Region Labour Market dashboards (modelled estimates).

*ABS Labour Force Survey data are based on the combined SA4s of Launceston and North East; and West and North West.

Notes: Data are the latest available. A high degree of caution should be exercised when interpreting data at the regional level, particularly in regards to percentage changes, given the volatility of the underlying data. For any enquiries related to the data in this report, please contact RegionalWorkforceAssessment@jobsandskills.gov.au

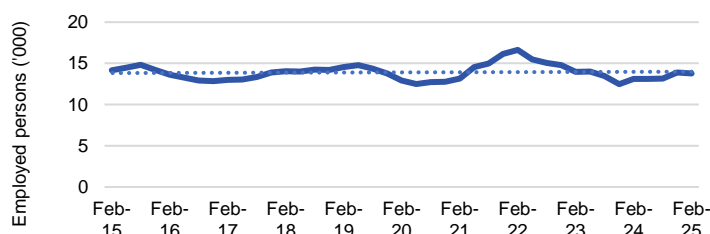
Five largest employing industries: key statistics

Health Care and Social Assistance



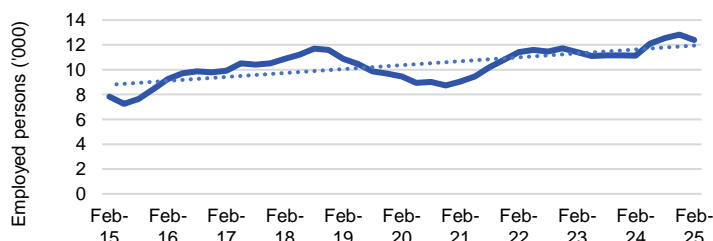
Number employed (Feb-25):	21,000
1 year employment change:	-10.3%
5 year employment change:	8.8%
10 year employment change:	43.2%
Youth share of employment:	9.9%
Mature age share of employment:	18.6%

Retail Trade



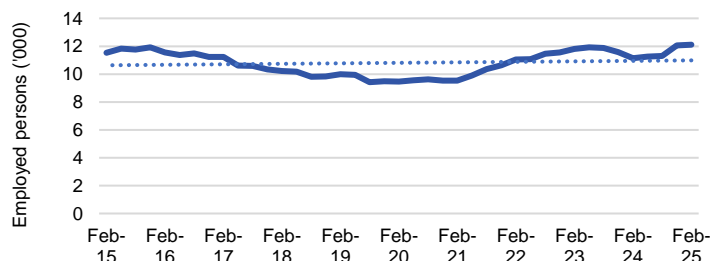
Number employed (Feb-25):	13,800
1 year employment change:	5.0%
5 year employment change:	6.6%
10 year employment change:	-2.6%
Youth share of employment:	20.6%
Mature age share of employment:	8.0%

Construction



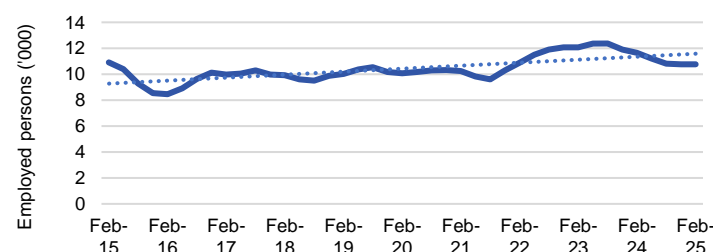
Number employed (Feb-25):	12,400
1 year employment change:	11.3%
5 year employment change:	31.1%
10 year employment change:	58.2%
Youth share of employment:	11.3%
Mature age share of employment:	7.7%

Manufacturing



Number employed (Feb-25):	12,100
1 year employment change:	8.7%
5 year employment change:	27.8%
10 year employment change:	5.0%
Youth share of employment:	6.8%
Mature age share of employment:	7.5%

Education and Training



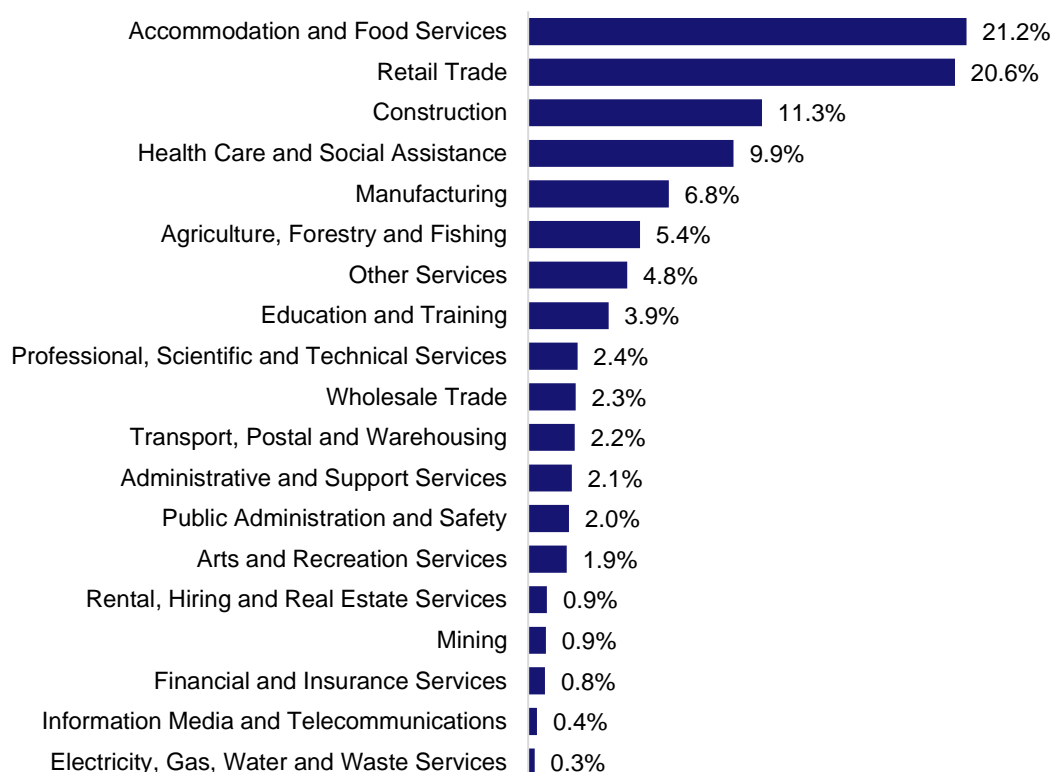
Number employed (Feb-25):	10,800
1 year employment change:	-7.8%
5 year employment change:	6.6%
10 year employment change:	-1.4%
Youth share of employment:	3.9%
Mature age share of employment:	9.8%

Source: ABS Labour Force Survey, Detailed, four quarter averages, February 2025, except youth and mature age data which are from the ABS Census of Population and Housing, 2021.

Notes: In each chart, the solid line is the level of employment and the dotted line is a simple linear trend line for the 10 year period. Given the volatility of the underlying data, employment estimates should be treated with a high degree of caution. Particular focus should be placed on the employment series over time to ascertain more reliable long-term growth trends.

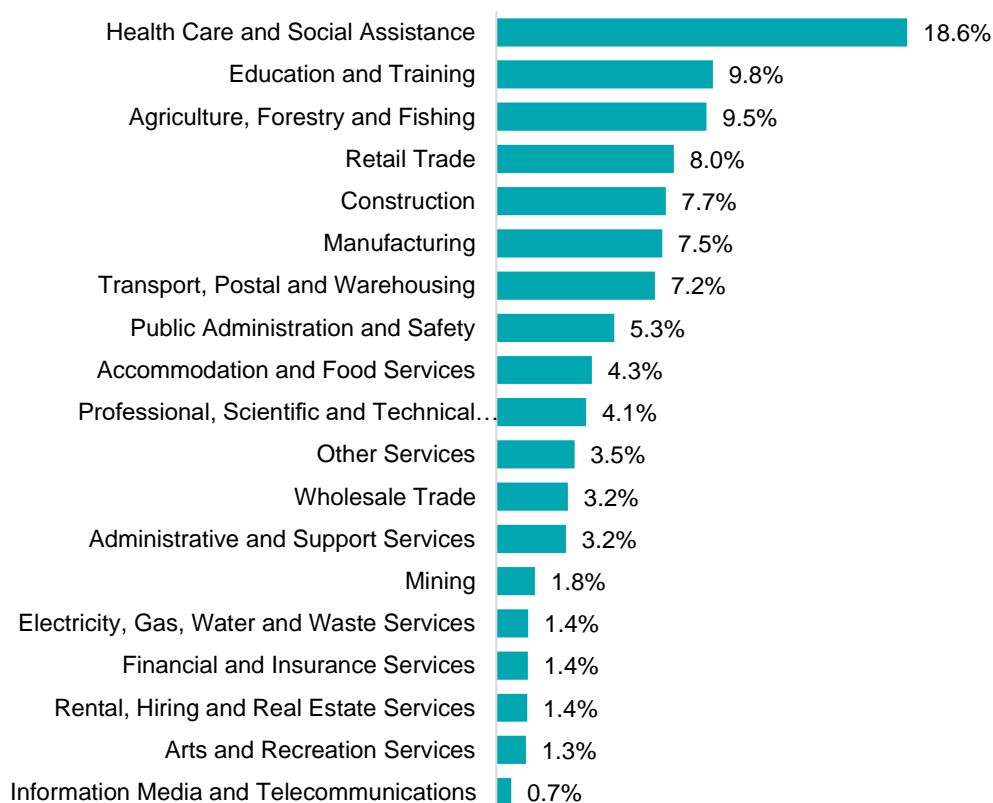
Employment characteristics by Industry

Which industries are youth (aged 15-24) employed in?



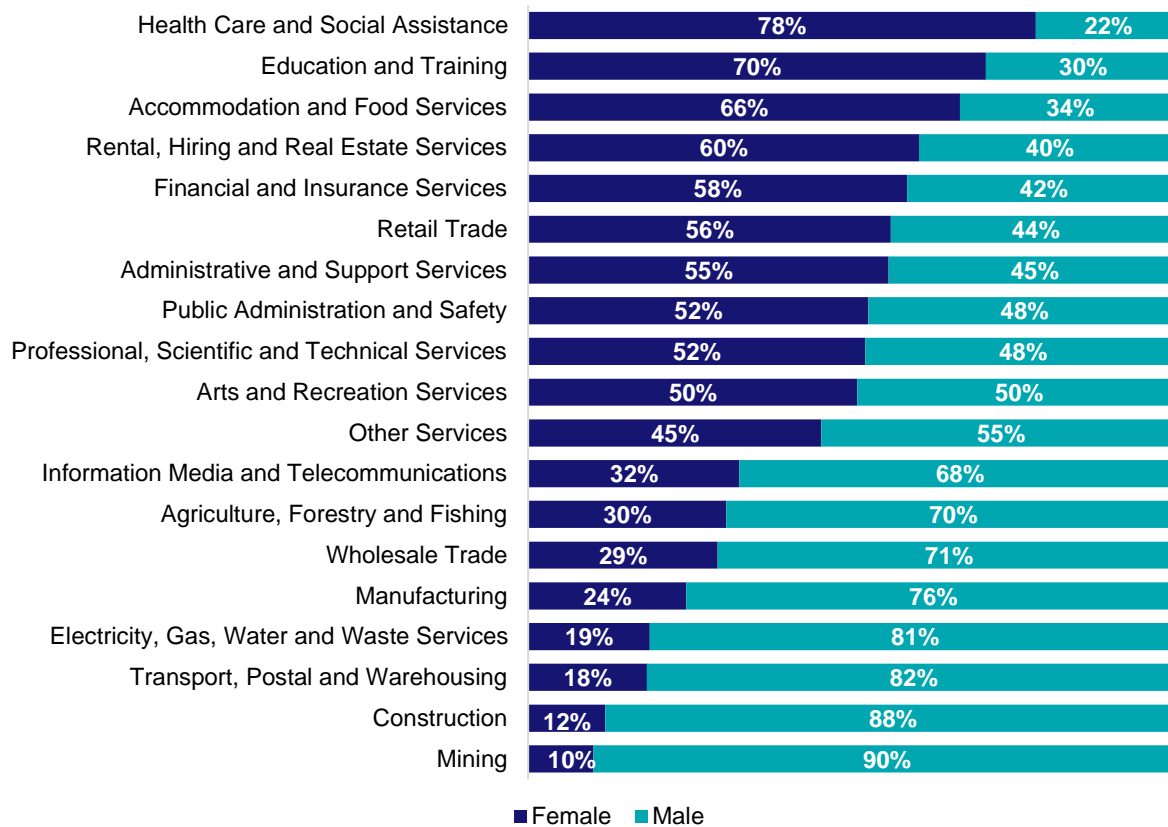
Source: ABS Census of Population and Housing, 2021.

Which industries are mature age persons (aged 55+) employed in?



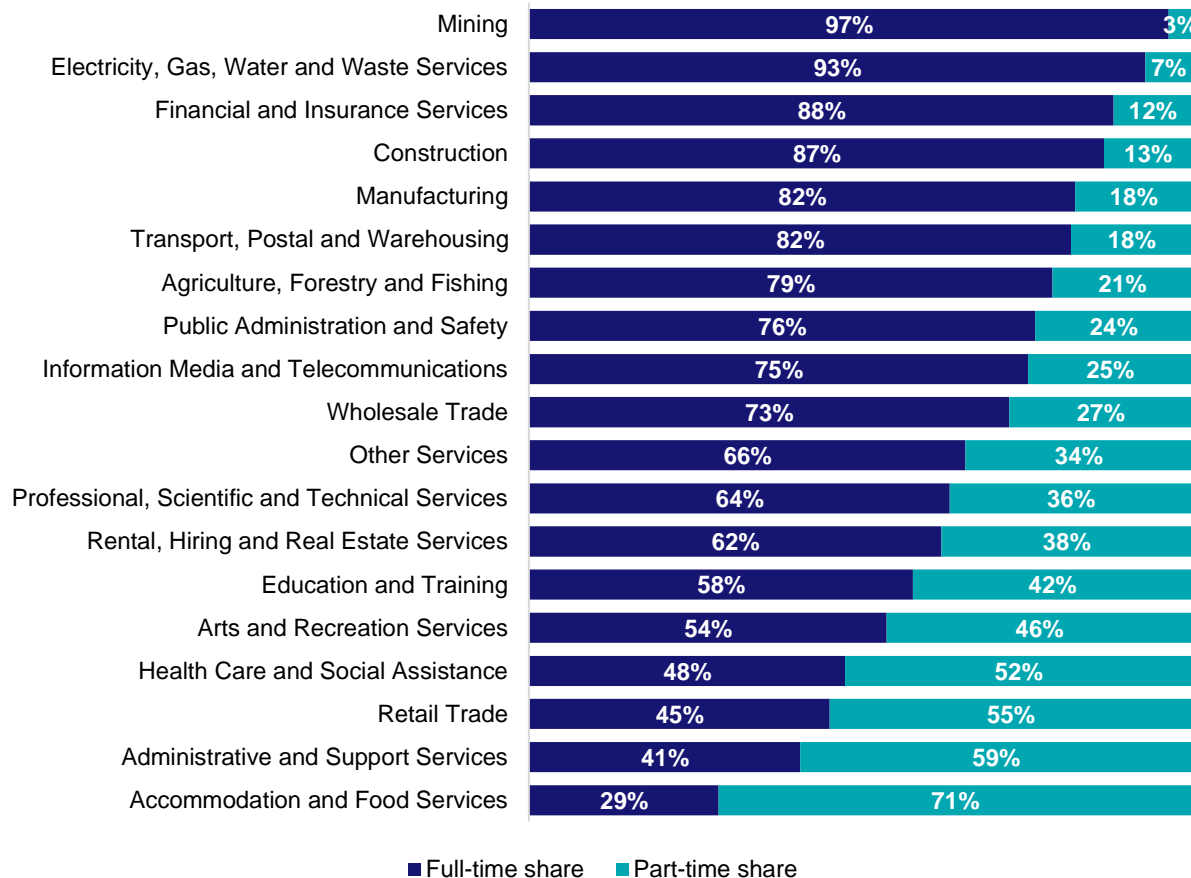
Source: ABS Census of Population and Housing, 2021. Note: SA2 level Census data have been aggregated to the Employment Region level.

Gender share by industry



Source: ABS Labour Force Survey, Detailed, four quarter averages, February 2025.

Full-time and part-time employment status by industry



Source: ABS Labour Force Survey, Detailed, four quarter averages, February 2025.

Appendix

Employment by industry, North and North Western Tasmania, February 2025

Industry (in order of size)	Share of employment in the region Feb-25 (%)	Employed ('000)			Full-time share %	Part-time share %	Median age *
		Feb-25	Feb-24	Feb-20			
Health Care and Social Assistance	15.9	21.0	23.4	19.3	47.7	52.3	44
Retail Trade	10.5	13.8	13.1	12.9	45.4	54.6	36
Construction	9.4	12.4	11.1	9.4	86.8	13.2	38
Manufacturing	9.2	12.1	11.1	9.5	82.5	17.5	42
Education and Training	8.2	10.8	11.7	10.1	58.0	42.0	46
Agriculture, Forestry and Fishing	7.5	9.8	8.1	10.1	79.1	20.9	44
Accommodation and Food Services	7.0	9.2	8.9	10.0	28.6	71.4	27
Public Administration and Safety	5.7	7.5	7.4	7.1	76.4	23.6	46
Professional, Scientific and Technical Services	5.1	6.7	5.9	5.2	63.5	36.5	42
Transport, Postal and Warehousing	4.3	5.7	7.8	6.2	81.9	18.1	50
Other Services	3.8	5.0	5.4	4.8	65.9	34.1	38
Administrative and Support Services	3.0	4.0	4.4	3.5	41.0	59.0	47
Mining	1.9	2.4	2.7	2.5	96.6	3.4	43
Wholesale Trade	1.8	2.4	2.8	3.5	72.5	27.5	46
Electricity, Gas, Water and Waste Services	1.7	2.2	1.7	1.2	93.1	6.9	46
Rental, Hiring and Real Estate Services	1.6	2.1	2.3	1.1	62.3	37.7	43
Arts and Recreation Services	1.4	1.8	1.7	1.8	54.0	46.0	42
Information Media and Telecommunications	1.1	1.5	1.4	0.9	75.4	24.6	43
Financial and Insurance Services	1.0	1.4	1.9	2.5	88.3	11.7	42
All industries	100.0	131.8	132.8	121.7	63.7	36.3	42

Source: ABS Labour Force Survey, Detailed, four quarter averages, February 2025. *Median age is from the ABS Census of Population and Housing, 2021. Median age has been derived using aggregated SA2s for the Employment Region.

Note: Small cells should be viewed with caution due to small sample sizes and regional volatility.