



Australian Government



Jobs and Skills Australia

Note regarding labour force data for the Broome, Esperance, Geraldton and Kalgoorlie Employment Regions

These Employment Regions fall within the Western Australia – Outback (North and South) SA4. This SA4 is very large and covers much of regional and remote WA, including Broome, Esperance, Geraldton and Kalgoorlie. The WA Outback SA4 is a poor fit for these Employment Regions but is the only data readily available for the labour force. As a result, the labour force data for the Western Australia – Outback (North and South) SA4 is presented for each of these Employment Regions.



Australian Government



Jobs and Skills Australia

Industry profile

Western Australia

Release date: 27 March 2025

Overview

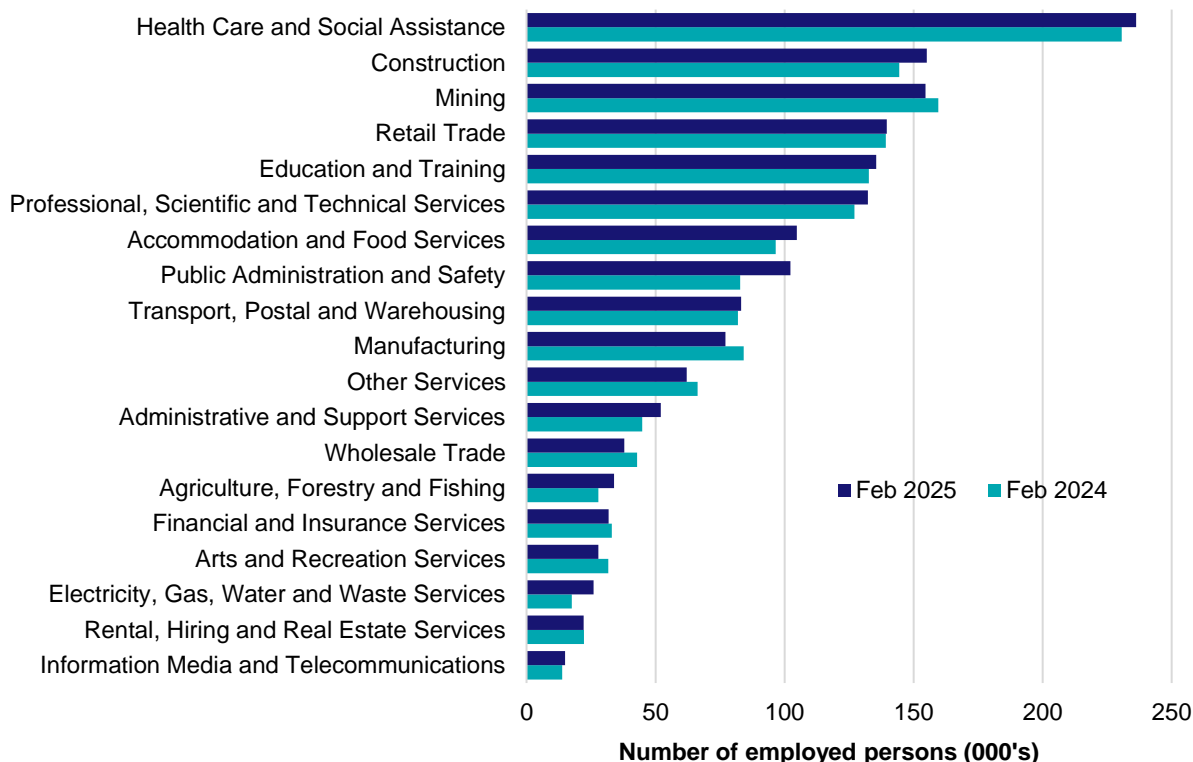
In February 2025, there were around 1,629,100 people employed in Western Australia. The 5 largest employing industries in Western Australia were Health Care and Social Assistance, Construction, Mining, Retail Trade and Education and Training. Together these 5 industries accounted for 50% of all employment.

Over the year to February 2025, employment in:

- Health Care and Social Assistance rose by 2.4% to stand at 236,200
- Construction rose by 7.5% to stand at 155,200
- Mining fell by 3.1% to stand at 154,600.

In Health Care and Social Assistance in Western Australia, 53% of workers were employed full-time; 77% were Female; and the median age of the workforce was 42. Around 86% of employed persons in this industry were located in Greater Perth.

Employment by industry, February 2025 and February 2024

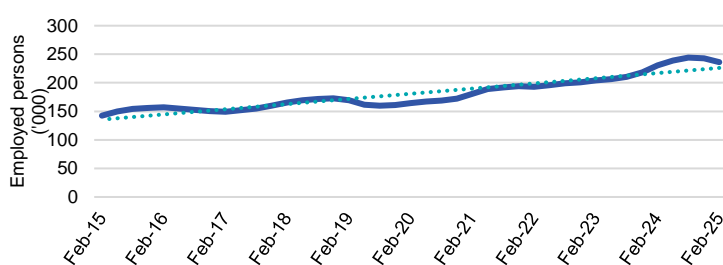


Source: ABS Labour Force Survey, Detailed, four quarter averages, February 2025. Note that total employment (four quarter averaged data) may not match data published in the Labour Market dashboards (6 month averaged data).

Note: For any enquiries related to the data in this report, contact RegionalWorkforceAssessment@jobsandskills.gov.au

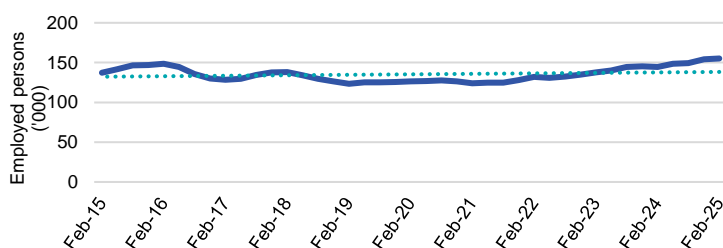
Five largest employing industries: key statistics

Health Care and Social Assistance



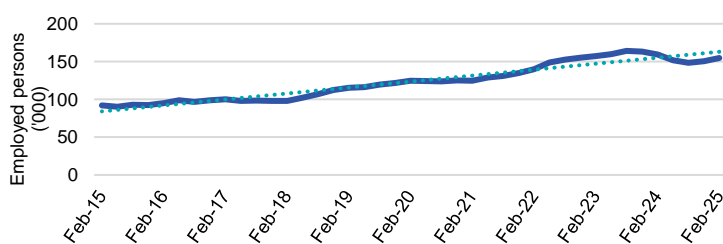
Number employed (Feb-25):	236,200
1 year employment change:	2.4%
5 year employment change:	43.7%
10 year employment change:	65.8%
Youth share of employment:	9.4%
Mature age share of employment:	15.7%

Construction



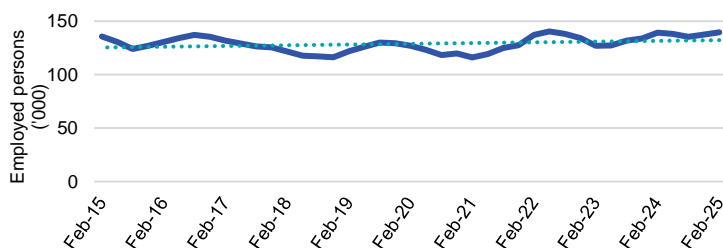
Number employed (Feb-25):	155,200
1 year employment change:	7.5%
5 year employment change:	22.7%
10 year employment change:	13.2%
Youth share of employment:	7.9%
Mature age share of employment:	8.6%

Mining



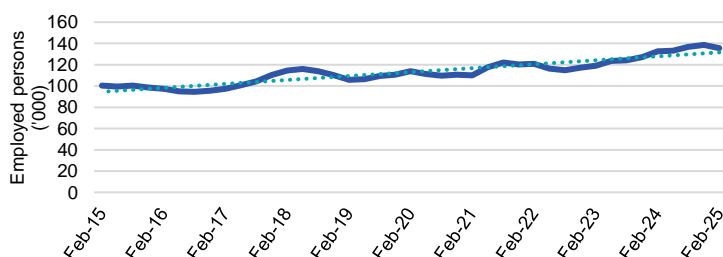
Number employed (Feb-25):	154,600
1 year employment change:	-3.1%
5 year employment change:	23.9%
10 year employment change:	68.2%
Youth share of employment:	3.5%
Mature age share of employment:	6.2%

Retail Trade



Number employed (Feb-25):	139,600
1 year employment change:	0.2%
5 year employment change:	9.9%
10 year employment change:	2.8%
Youth share of employment:	20.9%
Mature age share of employment:	7.3%

Education and Training



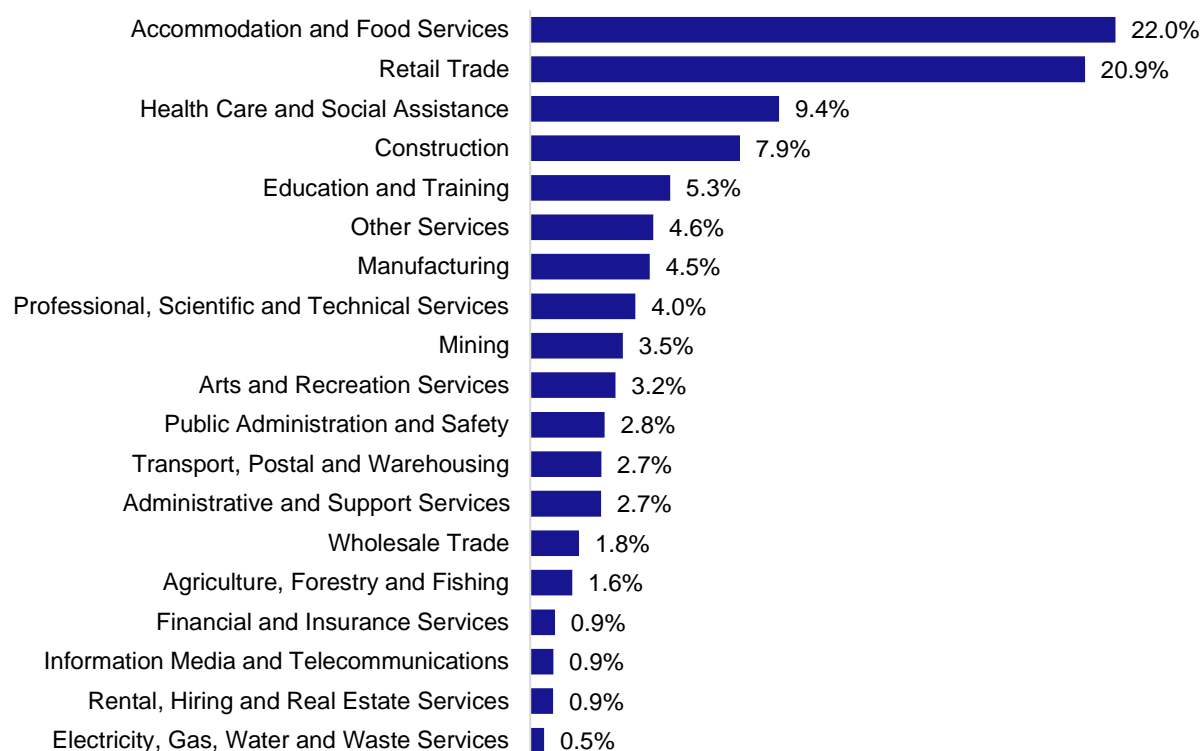
Number employed (Feb-25):	135,500
1 year employment change:	2.2%
5 year employment change:	18.9%
10 year employment change:	35.1%
Youth share of employment:	5.3%
Mature age share of employment:	11.2%

Source: ABS Labour Force Survey, Detailed, four quarter averages, February 2025, except youth and mature age data which are from the ABS Census of Population and Housing, 2021.

Note: In each chart, the solid line is the level of employment and the dotted line is a simple linear trend line for the 10 year period.

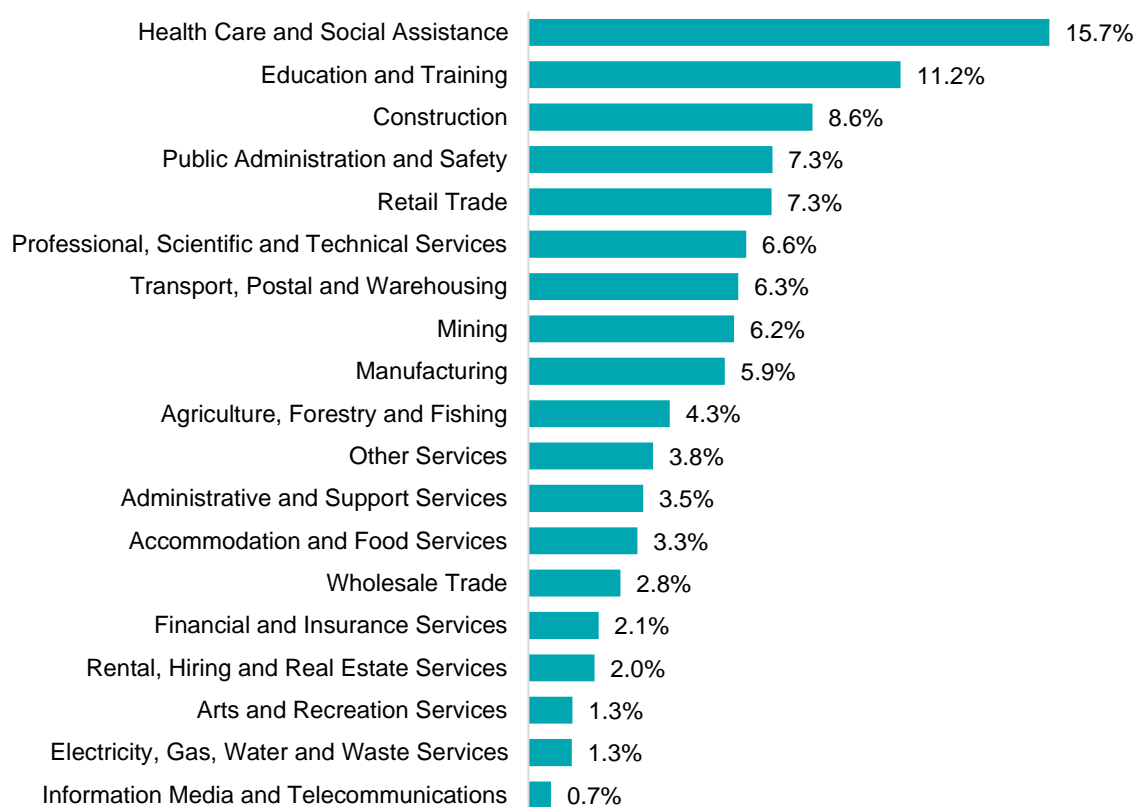
Employment characteristics by Industry

Which industries are youth (aged 15-24) employed in?



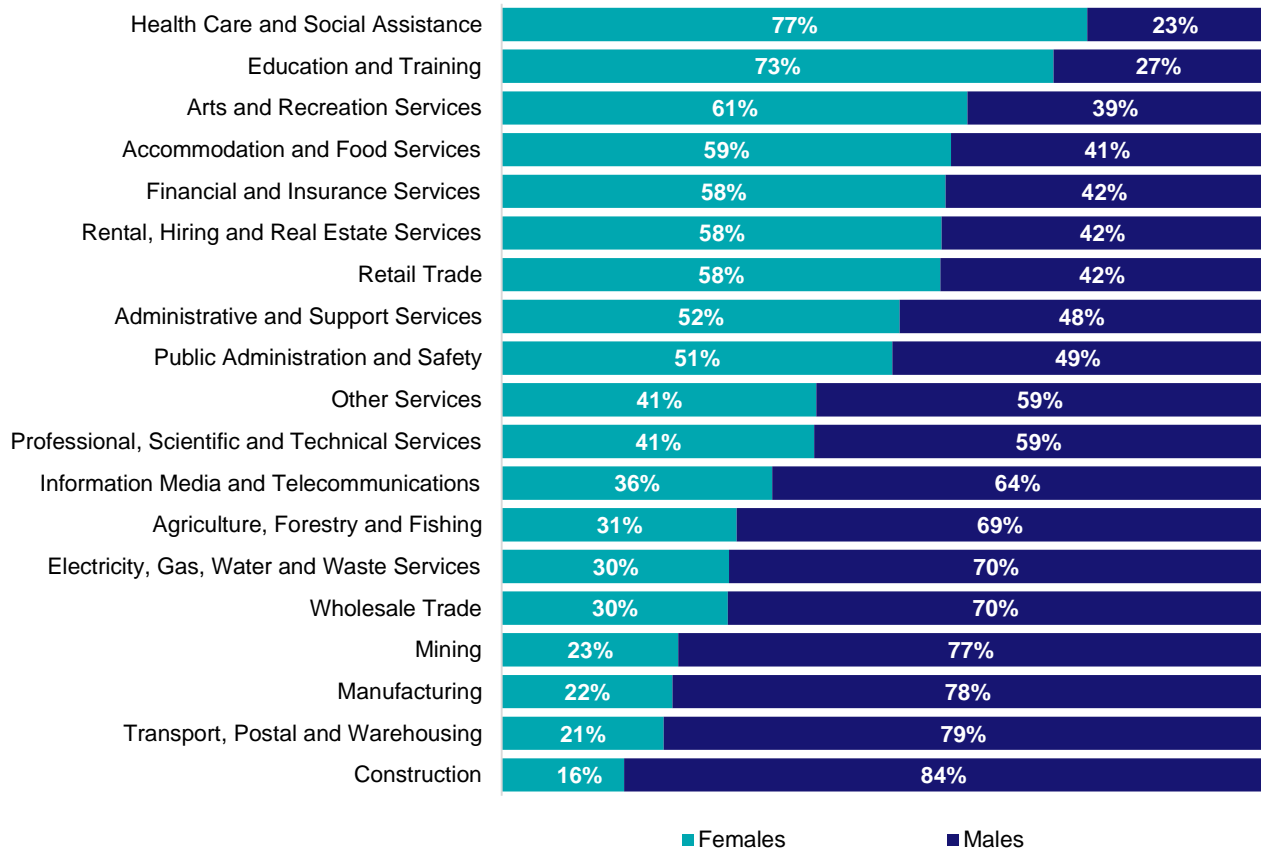
Source: ABS Census of Population and Housing, 2021.

Which industries are mature age persons (aged 55+) employed in?



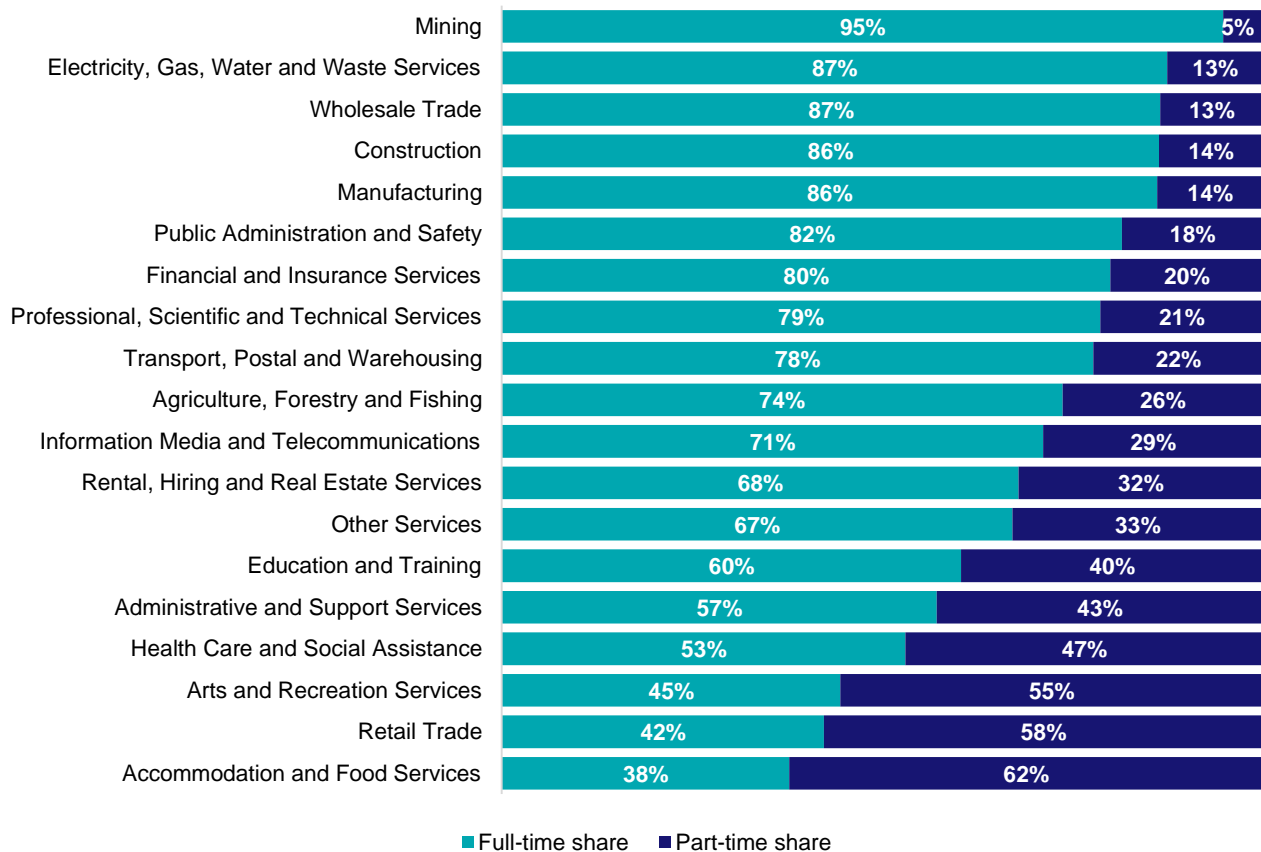
Source: ABS Census of Population and Housing, 2021.

Gender share by industry



Source: ABS Labour Force Survey, Detailed, four quarter averages, February 2025.

Full-time and part-time employment status by industry



Source: ABS Labour Force Survey, Detailed, four quarter averages, February 2025.

Appendix

Employment by industry, Western Australia, February 2025

Industry (in order of size)	Share of emp't Feb-25 (%)	Share of emp't in Greater Perth (%)	Share of emp't in Rest of WA (%)	Employed ('000)			1 year change		5 year change		Median age *
				Feb-25	Feb-24	Feb-20	('000)	%	('000)	%	
Health Care and Social Assistance	14.5	85.6	14.4	236.2	230.6	164.3	5.5	2.4	71.8	43.7	42
Construction	9.5	80.9	19.1	155.2	144.4	126.4	10.8	7.5	28.8	22.7	40
Mining	9.5	76.9	23.1	154.6	159.6	124.8	-5.0	-3.1	29.9	23.9	41
Retail Trade	8.6	79.1	20.9	139.6	139.3	127.0	0.3	0.2	12.6	9.9	33
Education and Training	8.3	79.9	20.1	135.5	132.6	113.9	2.9	2.2	21.6	18.9	45
Professional, Scientific and Technical Services	8.1	93.3	6.7	132.2	127.0	112.9	5.2	4.1	19.3	17.1	41
Accommodation and Food Services	6.4	79.5	20.5	104.7	96.6	88.0	8.2	8.4	16.7	19.0	26
Public Administration and Safety	6.3	81.1	18.9	102.3	82.8	87.0	19.5	23.5	15.3	17.6	44
Transport, Postal and Warehousing	5.1	78.5	21.5	83.2	81.9	67.9	1.3	1.5	15.3	22.5	45
Manufacturing	4.7	83.8	16.2	77.0	84.1	83.5	-7.1	-8.4	-6.5	-7.7	42
Other Services	3.8	83.5	16.5	62.0	66.3	55.4	-4.2	-6.4	6.6	11.9	39
Administrative and Support Services	3.2	79.5	20.5	52.0	44.8	43.4	7.2	16.1	8.6	19.7	41
Wholesale Trade	2.3	84.7	15.3	37.9	42.8	42.3	-4.9	-11.5	-4.4	-10.5	43
Agriculture, Forestry and Fishing	2.1	15.0	85.0	33.9	27.8	36.7	6.1	22.0	-2.8	-7.7	48
Financial and Insurance Services	2.0	92.9	7.1	31.8	33.0	30.3	-1.2	-3.7	1.5	4.9	42
Arts and Recreation Services	1.7	91.1	8.9	27.9	31.7	24.9	-3.8	-12.1	3.0	12.1	35
Electricity, Gas, Water and Waste Services	1.6	83.8	16.2	26.0	17.5	19.6	8.5	48.4	6.4	32.6	43
Rental, Hiring and Real Estate Services	1.4	86.2	13.8	22.2	22.3	24.2	-0.1	-0.4	-2.0	-8.3	44
Information Media and Telecommunications	0.9	86.7	13.3	15.0	13.8	12.6	1.2	8.4	2.4	19.1	39
All Industries	100.0	81.3	18.7	1629.1	1578.9	1385.2	50.2	3.2	243.9	17.6	41

Source: ABS Labour Force Survey, Detailed, February 2025, four quarter averages. *Median age is from the ABS Census of Population and Housing, 2021.

Employment Region Industry profile

Broome Employment Region

Release date: 27 March 2025

Overview

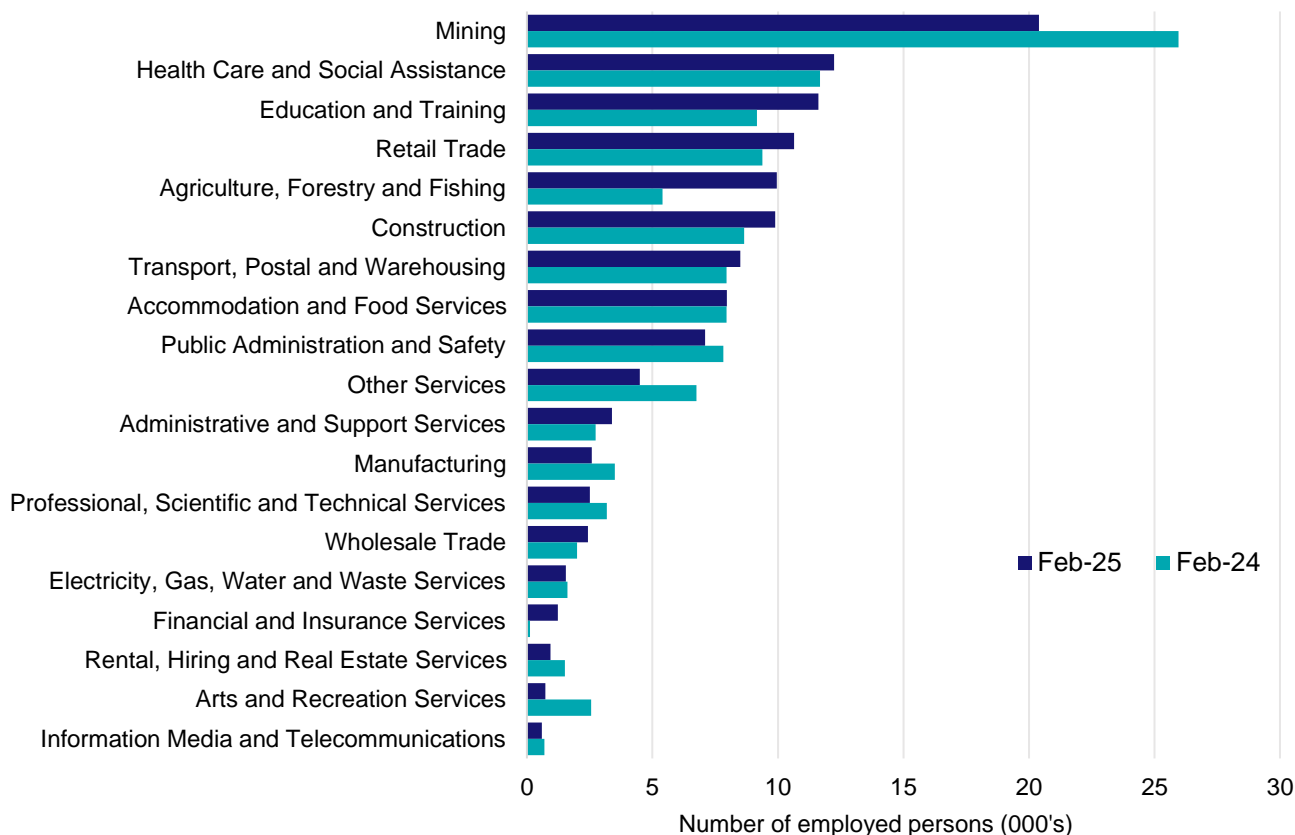
In February 2025, there were around 118,700 people employed in the Broome Employment Region. The 5 largest employing industries in the region were Mining, Health Care and Social Assistance, Education and Training, Retail Trade, and Agriculture, Forestry and Fishing. Together these 5 industries accounted for 55% of employment in the region.

Over the year to February 2025, employment in:

- Mining fell by 21.4% to stand at 20,400
- Health Care and Social Assistance rose by 4.8% to stand at 12,200
- Education and Training rose by 26.7% to stand at 11,600.

In Mining in the Broome Employment Region, 95% of workers were employed full-time; 78% were male; and the median age of the workforce was 38.

Employment by industry, February 2025 and February 2024



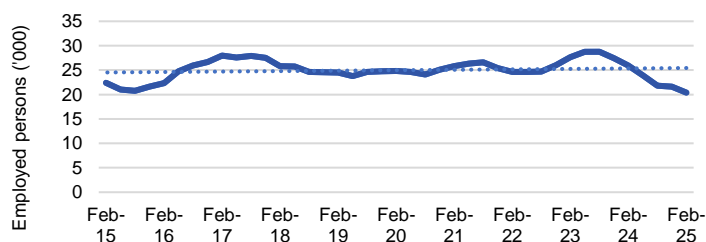
Source: ABS Labour Force Survey*, Detailed, four quarter averages, February 2025. Note that total employment for the region (four quarter averaged data) will not match data published in the Employment Region Labour Market dashboards (modelled estimates).

*ABS Labour Force Survey data are based on the Western Australia - Outback (North and South) SA4. This SA4 is very large and covers much of regional and remote WA and is not a good fit for this Employment Region, but is the only data readily available.

Notes: Data are the latest available. A high degree of caution should be exercised when interpreting data at the regional level, particularly in regards to percentage changes, given the volatility of the underlying data. For any enquiries related to the data in this report, please contact RegionalWorkforceAssessment@jobsandskills.gov.au

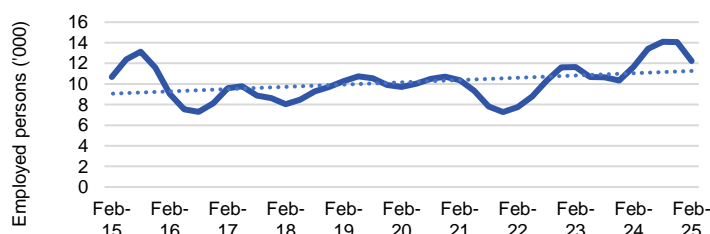
Five largest employing industries: key statistics

Mining



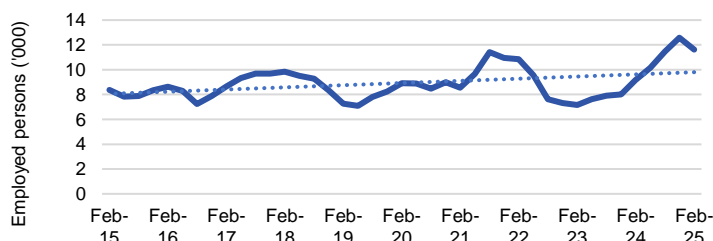
Number employed (Feb-25):	20,400
1 year employment change:	-21.4%
5 year employment change:	-17.9%
10 year employment change:	-9.0%
Youth share of employment:	2.0%
Mature age share of employment:	2.4%

Health Care and Social Assistance



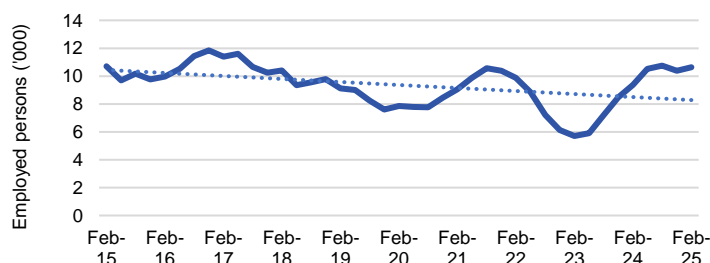
Number employed (Feb-25):	12,200
1 year employment change:	4.8%
5 year employment change:	25.8%
10 year employment change:	14.7%
Youth share of employment:	14.3%
Mature age share of employment:	21.1%

Education and Training



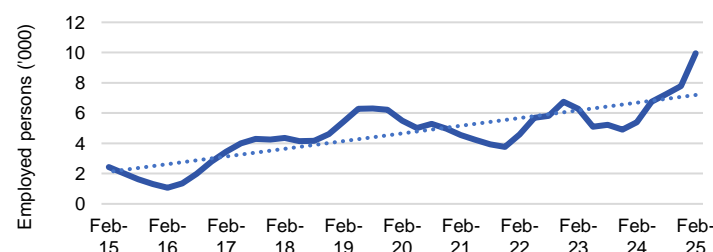
Number employed (Feb-25):	11,600
1 year employment change:	26.7%
5 year employment change:	30.4%
10 year employment change:	38.7%
Youth share of employment:	6.4%
Mature age share of employment:	12.3%

Retail Trade



Number employed (Feb-25):	10,600
1 year employment change:	13.5%
5 year employment change:	35.4%
10 year employment change:	-0.6%
Youth share of employment:	21.7%
Mature age share of employment:	10.2%

Agriculture, Forestry and Fishing



Number employed (Feb-25):	10,000
1 year employment change:	84.3%
5 year employment change:	81.2%
10 year employment change:	307.4%
Youth share of employment:	3.0%
Mature age share of employment:	2.0%

Source: ABS Labour Force Survey, Detailed, four quarter averages, February 2025, except youth and mature age data which are from the ABS Census of Population and Housing, 2021.

Notes: In each chart, the solid line is the level of employment and the dotted line is a simple linear trend line for the 10 year period. Given the volatility of the underlying data, employment estimates should be treated with a high degree of caution. Particular focus should be placed on the employment series over time to ascertain more reliable long-term growth trends.

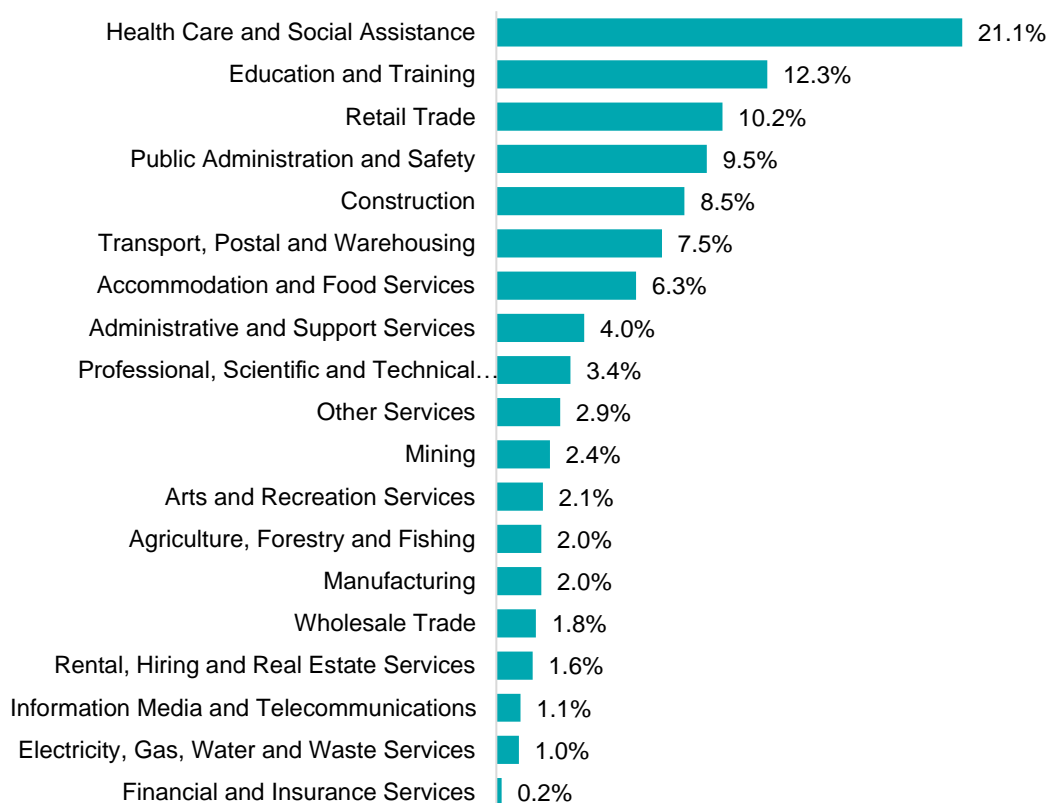
Employment characteristics by Industry

Which industries are youth (aged 15-24) employed in?



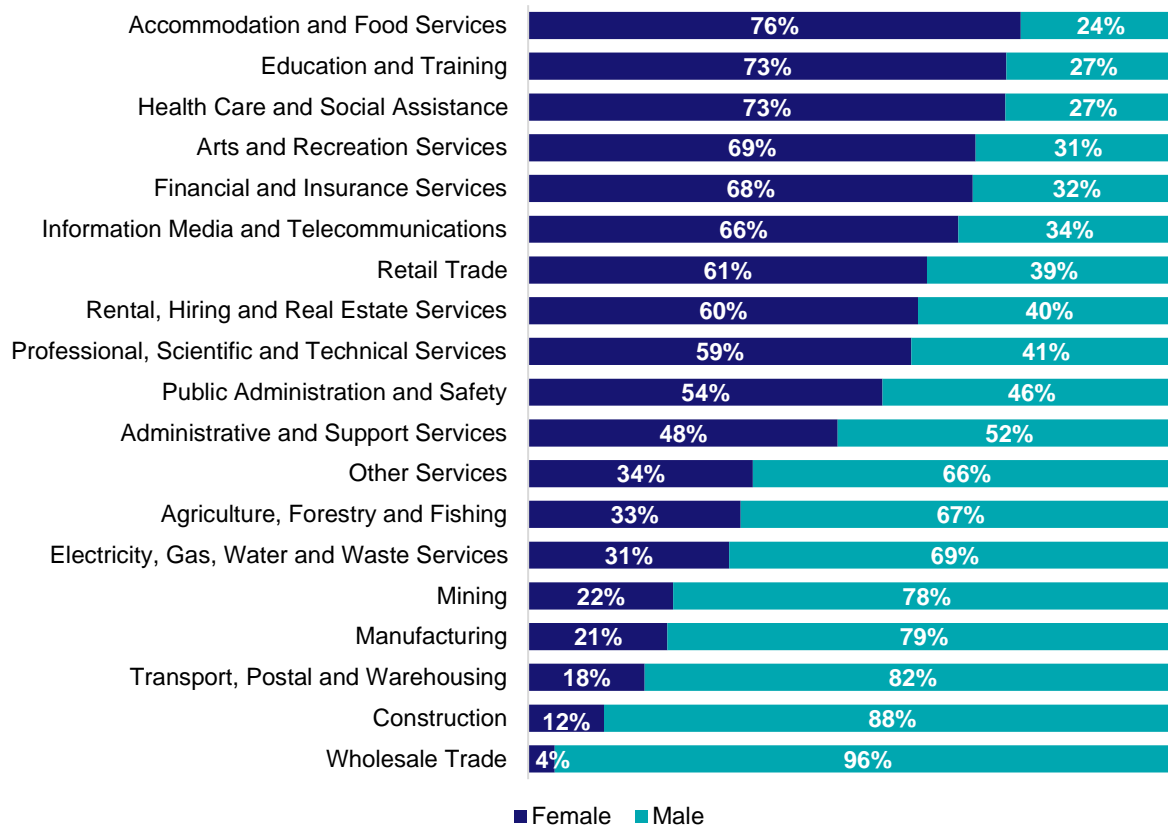
Source: ABS Census of Population and Housing, 2021.

Which industries are mature age persons (aged 55+) employed in?



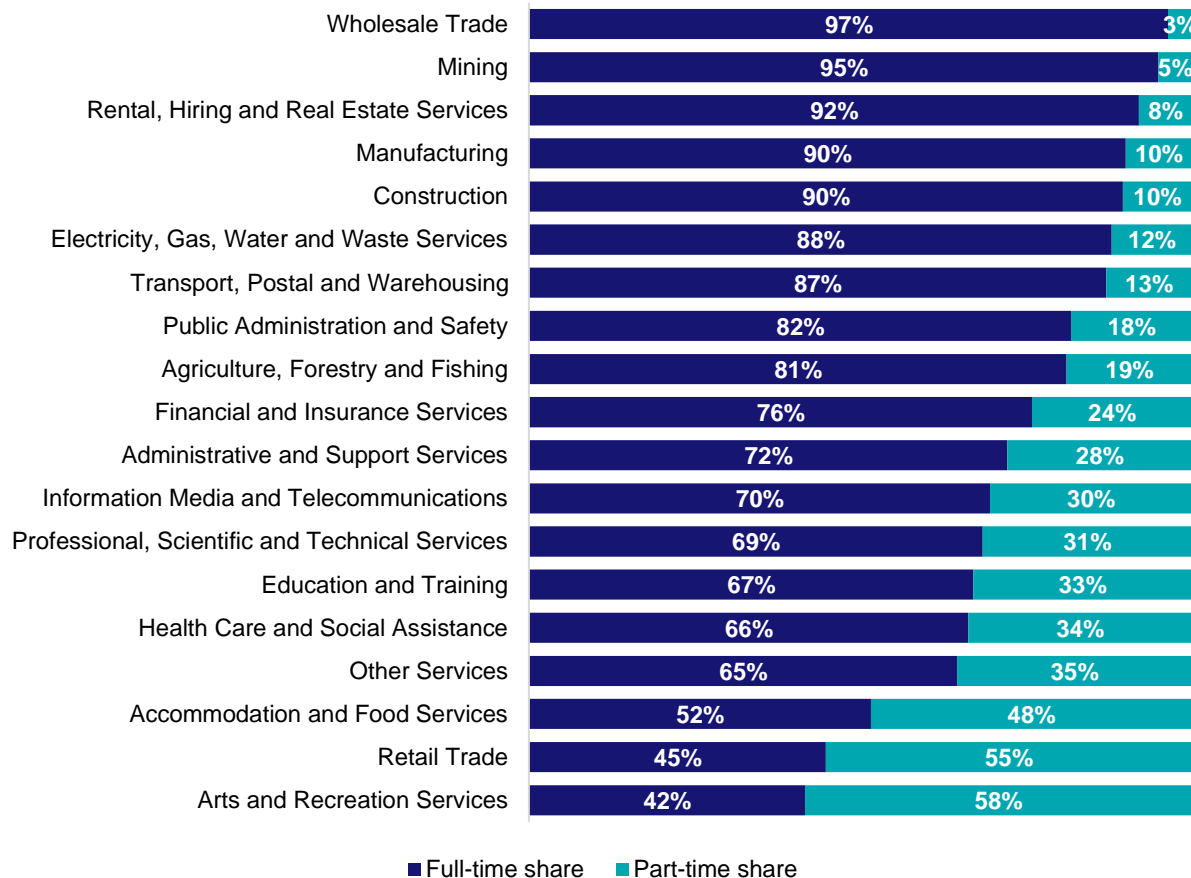
Source: ABS Census of Population and Housing, 2021. Note: SA2 level Census data have been aggregated to the Employment Region level.

Gender share by industry



Source: ABS Labour Force Survey, Detailed, four quarter averages, February 2025.

Full-time and part-time employment status by industry



Source: ABS Labour Force Survey, Detailed, four quarter averages, February 2025.

Appendix

Employment by industry, Broome, February 2025

Industry (in order of size)	Share of employment in the region Feb-25 (%)	Employed ('000)			Full-time share %	Part-time share %	Median age *
		Feb-25	Feb-24	Feb-20			
Mining	17.2	20.4	26.0	24.8	95.1	4.9	38
Health Care and Social Assistance	10.3	12.2	11.7	9.7	66.3	33.7	39
Education and Training	9.8	11.6	9.2	8.9	67.1	32.9	42
Retail Trade	9.0	10.6	9.4	7.9	44.8	55.2	38
Agriculture, Forestry and Fishing	8.4	10.0	5.4	5.5	81.2	18.8	35
Construction	8.3	9.9	8.7	11.1	89.7	10.3	42
Transport, Postal and Warehousing	7.2	8.5	7.9	6.5	87.2	12.8	39
Accommodation and Food Services	6.7	8.0	7.9	6.6	51.6	48.4	31
Public Administration and Safety	6.0	7.1	7.8	10.0	81.9	18.1	43
Other Services	3.8	4.5	6.8	3.2	64.7	35.3	38
Administrative and Support Services	2.8	3.4	2.7	2.8	72.2	27.8	43
Manufacturing	2.2	2.6	3.5	3.7	90.1	9.9	35
Professional, Scientific and Technical Services	2.1	2.5	3.2	3.7	68.5	31.5	43
Wholesale Trade	2.1	2.4	2.0	2.1	96.5	3.5	50
Electricity, Gas, Water and Waste Services	1.3	1.5	1.6	1.4	88.0	12.0	43
Financial and Insurance Services	1.0	1.2	0.1	0.6	76.0	24.0	44
Rental, Hiring and Real Estate Services	0.8	0.9	1.5	2.0	92.1	7.9	43
Arts and Recreation Services	0.6	0.7	2.6	1.5	41.7	58.3	39
Information Media and Telecommunications	0.5	0.6	0.7	0.8	69.6	30.4	38
All industries	100.0	118.7	118.7	112.6	75.8	24.2	40

Source: ABS Labour Force Survey, Detailed, four quarter averages, February 2025. *Median age is from the ABS Census of Population and Housing, 2021. Median age has been derived using aggregated SA2s for the Employment Region.

Note: Small cells should be viewed with caution due to small sample sizes and regional volatility.



Employment Region Industry profile

Esperance Employment Region

Release date: 27 March 2025

Overview

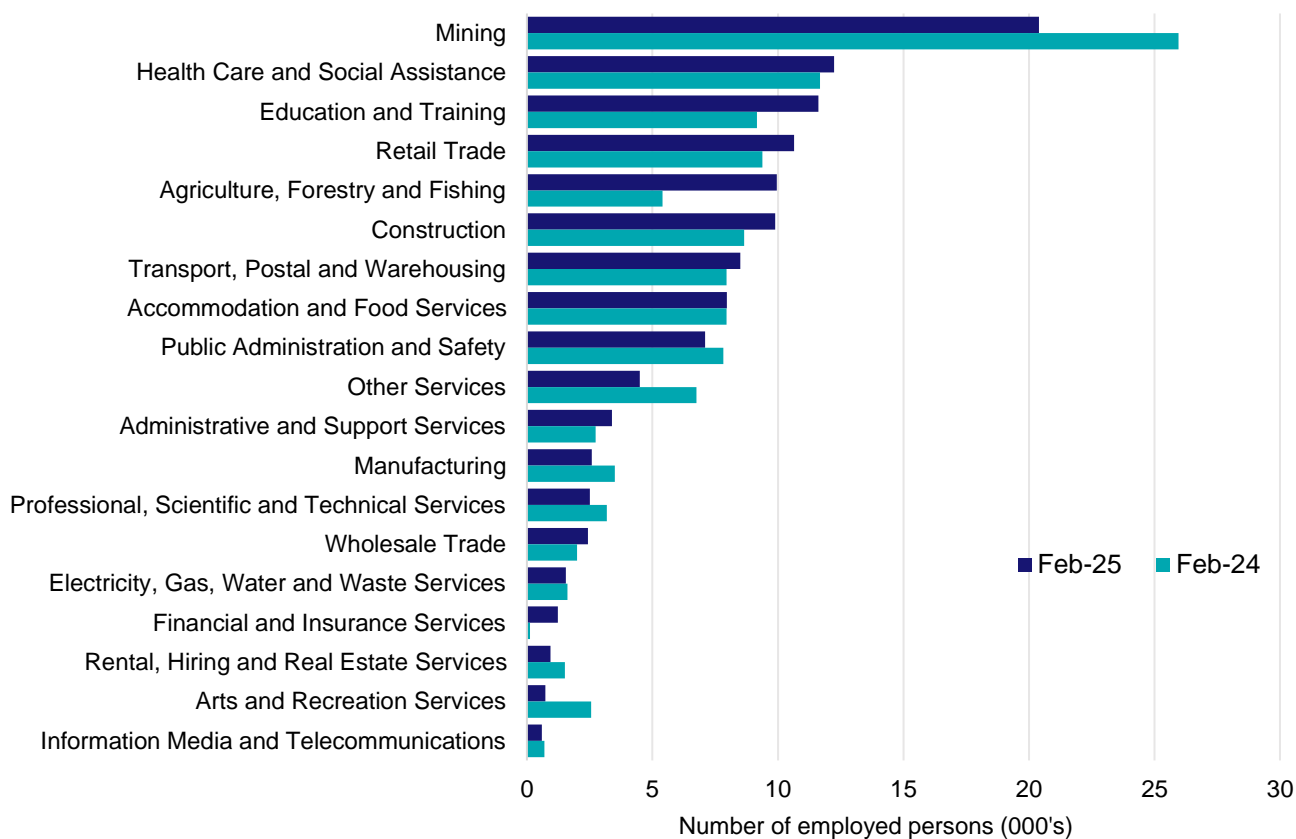
In February 2025, there were around 118,700 people employed in the Esperance Employment Region. The 5 largest employing industries in the region were Mining, Health Care and Social Assistance, Education and Training, Retail Trade, and Agriculture, Forestry and Fishing. Together these 5 industries accounted for 55% of employment in the region.

Over the year to February 2025, employment in:

- Mining fell by 21.4% to stand at 20,400
- Health Care and Social Assistance rose by 4.8% to stand at 12,200
- Education and Training rose by 26.7% to stand at 11,600.

In Mining in the Esperance Employment Region, 95% of workers were employed full-time; 78% were male; and the median age of the workforce was 44.

Employment by industry, February 2025 and February 2024



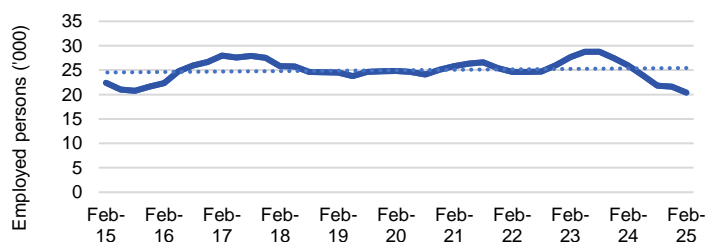
Source: ABS Labour Force Survey*, Detailed, four quarter averages, February 2025. Note that total employment for the region (four quarter averaged data) will not match data published in the Employment Region Labour Market dashboards (modelled estimates).

*ABS Labour Force Survey data are based on the Western Australia - Outback (North and South) SA4. This SA4 is very large and covers much of regional and remote WA and is not a good fit for this Employment Region, but is the only data readily available.

Notes: Data are the latest available. A high degree of caution should be exercised when interpreting data at the regional level, particularly in regards to percentage changes, given the volatility of the underlying data. For any enquiries related to the data in this report, please contact RegionalWorkforceAssessment@jobsandskills.gov.au

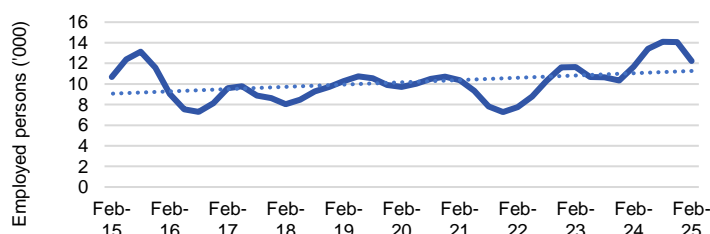
Five largest employing industries: key statistics

Mining



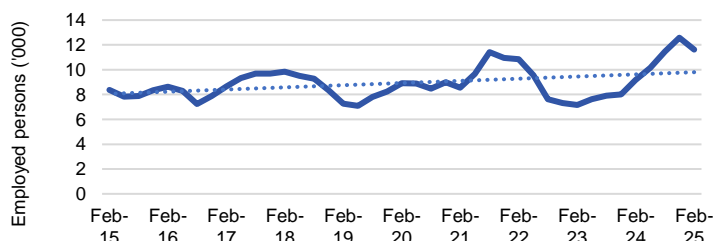
Number employed (Feb-25):	20,400
1 year employment change:	-21.4%
5 year employment change:	-17.9%
10 year employment change:	-9.0%
Youth share of employment:	2.8%
Mature age share of employment:	4.2%

Health Care and Social Assistance



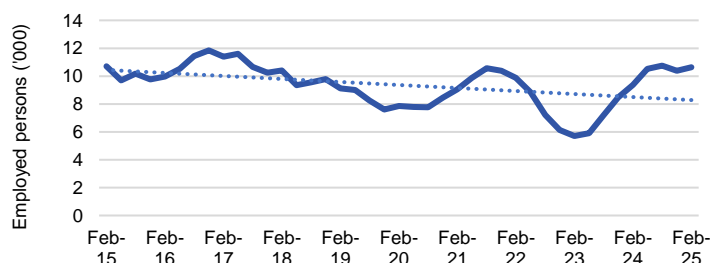
Number employed (Feb-25):	12,200
1 year employment change:	4.8%
5 year employment change:	25.8%
10 year employment change:	14.7%
Youth share of employment:	7.5%
Mature age share of employment:	13.2%

Education and Training



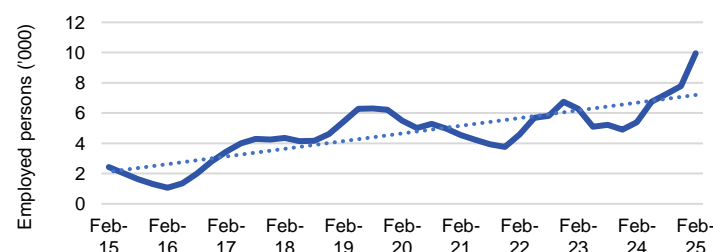
Number employed (Feb-25):	11,600
1 year employment change:	26.7%
5 year employment change:	30.4%
10 year employment change:	38.7%
Youth share of employment:	3.6%
Mature age share of employment:	11.1%

Retail Trade



Number employed (Feb-25):	10,600
1 year employment change:	13.5%
5 year employment change:	35.4%
10 year employment change:	-0.6%
Youth share of employment:	21.3%
Mature age share of employment:	6.8%

Agriculture, Forestry and Fishing



Number employed (Feb-25):	10,000
1 year employment change:	84.3%
5 year employment change:	81.2%
10 year employment change:	307.4%
Youth share of employment:	4.9%
Mature age share of employment:	13.2%

Source: ABS Labour Force Survey, Detailed, four quarter averages, February 2025, except youth and mature age data which are from the ABS Census of Population and Housing, 2021.

Notes: In each chart, the solid line is the level of employment and the dotted line is a simple linear trend line for the 10 year period. Given the volatility of the underlying data, employment estimates should be treated with a high degree of caution. Particular focus should be placed on the employment series over time to ascertain more reliable long-term growth trends.

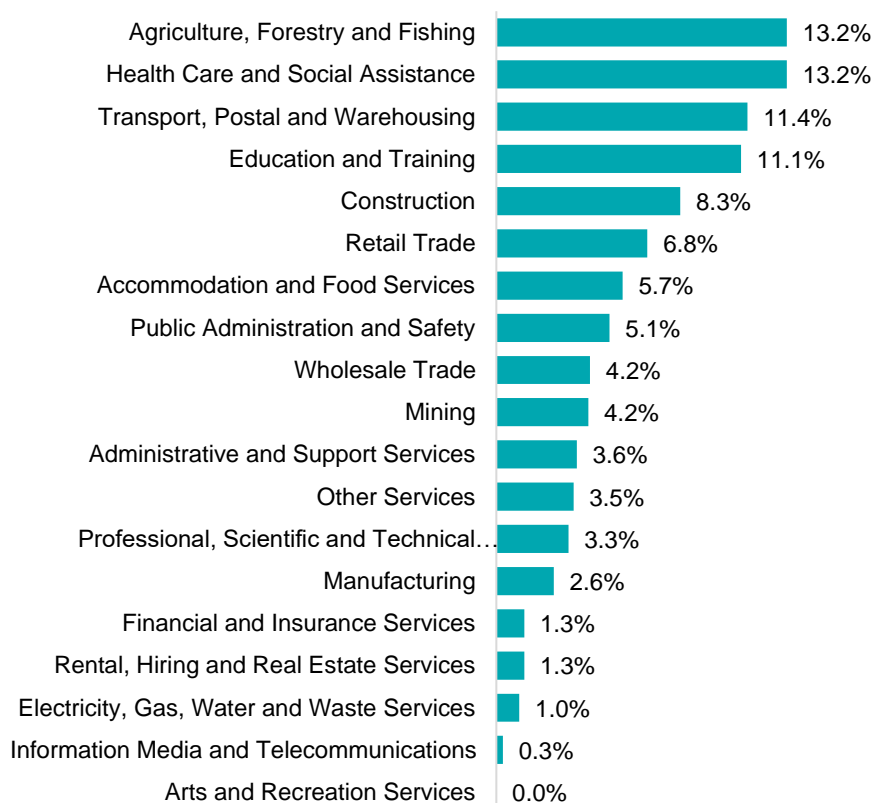
Employment characteristics by Industry

Which industries are youth (aged 15-24) employed in?



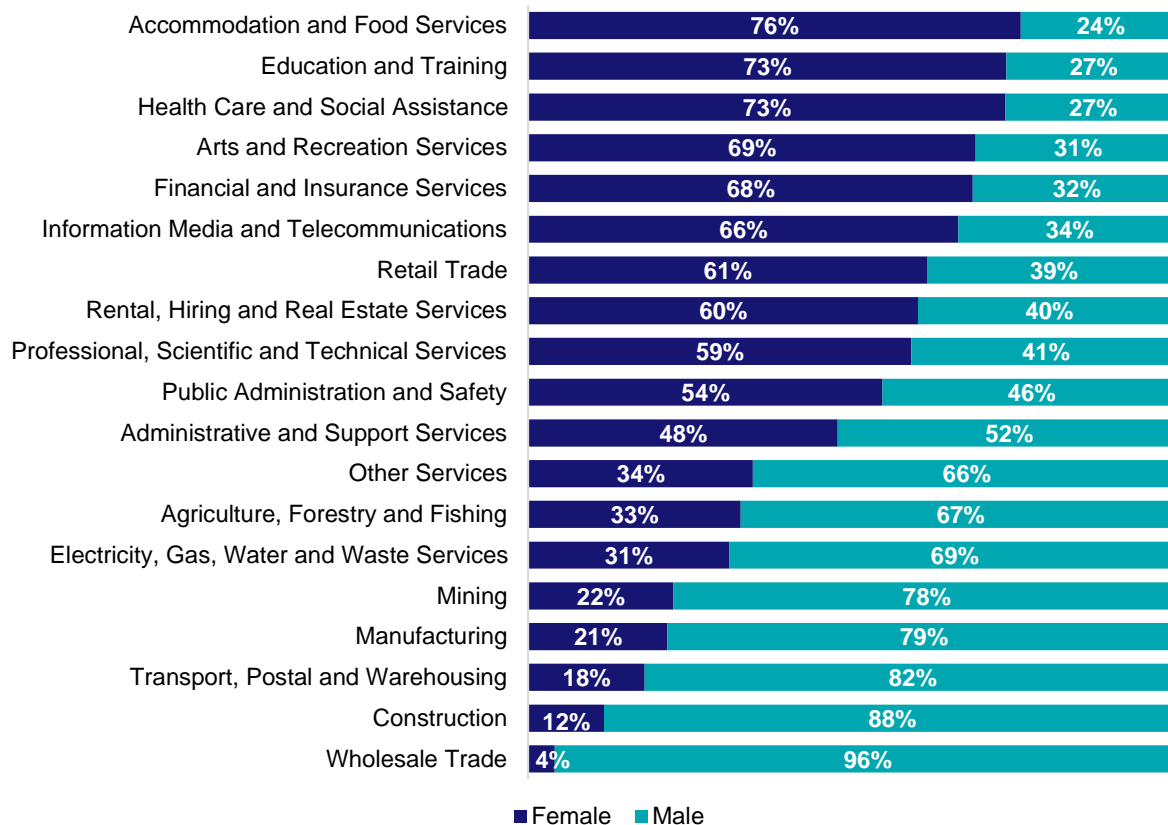
Source: ABS Census of Population and Housing, 2021.

Which industries are mature age persons (aged 55+) employed in?



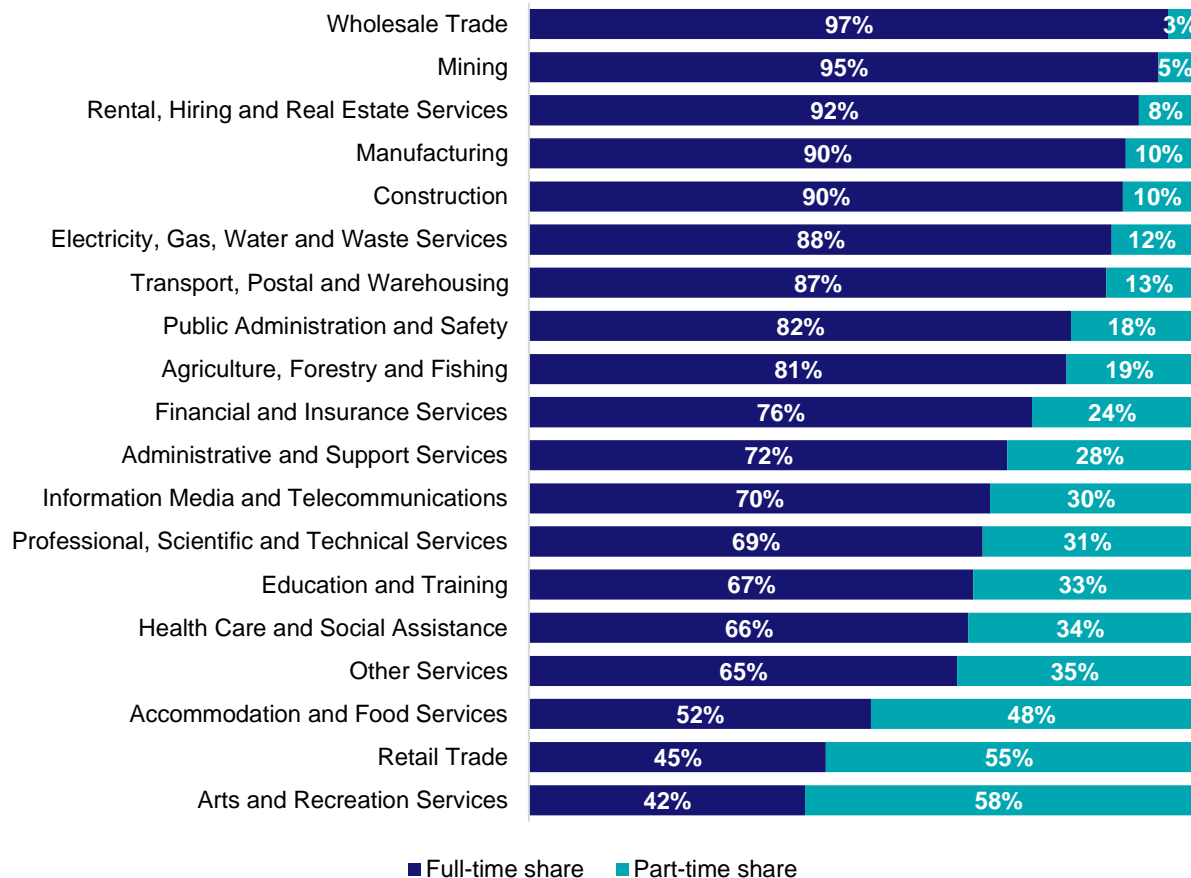
Source: ABS Census of Population and Housing, 2021. Note: SA2 level Census data have been aggregated to the Employment Region level.

Gender share by industry



Source: ABS Labour Force Survey, Detailed, four quarter averages, February 2025.

Full-time and part-time employment status by industry



Source: ABS Labour Force Survey, Detailed, four quarter averages, February 2025.

Appendix

Employment by industry, Esperance, February 2025

Industry (in order of size)	Share of employment in the region Feb-25 (%)	Employed ('000)			Full-time share %	Part-time share %	Median age *
		Feb-25	Feb-24	Feb-20			
Mining	17.2	20.4	26.0	24.8	95.1	4.9	44
Health Care and Social Assistance	10.3	12.2	11.7	9.7	66.3	33.7	46
Education and Training	9.8	11.6	9.2	8.9	67.1	32.9	46
Retail Trade	9.0	10.6	9.4	7.9	44.8	55.2	35
Agriculture, Forestry and Fishing	8.4	10.0	5.4	5.5	81.2	18.8	49
Construction	8.3	9.9	8.7	11.1	89.7	10.3	42
Transport, Postal and Warehousing	7.2	8.5	7.9	6.5	87.2	12.8	47
Accommodation and Food Services	6.7	8.0	7.9	6.6	51.6	48.4	34
Public Administration and Safety	6.0	7.1	7.8	10.0	81.9	18.1	48
Other Services	3.8	4.5	6.8	3.2	64.7	35.3	38
Administrative and Support Services	2.8	3.4	2.7	2.8	72.2	27.8	46
Manufacturing	2.2	2.6	3.5	3.7	90.1	9.9	37
Professional, Scientific and Technical Services	2.1	2.5	3.2	3.7	68.5	31.5	43
Wholesale Trade	2.1	2.4	2.0	2.1	96.5	3.5	46
Electricity, Gas, Water and Waste Services	1.3	1.5	1.6	1.4	88.0	12.0	43
Financial and Insurance Services	1.0	1.2	0.1	0.6	76.0	24.0	44
Rental, Hiring and Real Estate Services	0.8	0.9	1.5	2.0	92.1	7.9	49
Arts and Recreation Services	0.6	0.7	2.6	1.5	41.7	58.3	39
Information Media and Telecommunications	0.5	0.6	0.7	0.8	69.6	30.4	43
All industries	100.0	118.7	118.7	112.6	75.8	24.2	44

Source: ABS Labour Force Survey, Detailed, four quarter averages, February 2025. *Median age is from the ABS Census of Population and Housing, 2021. Median age has been derived using aggregated SA2s for the Employment Region.

Note: Small cells should be viewed with caution due to small sample sizes and regional volatility.



Employment Region Industry profile

Gerladton Employment Region

Release date: 27 March 2025

Overview

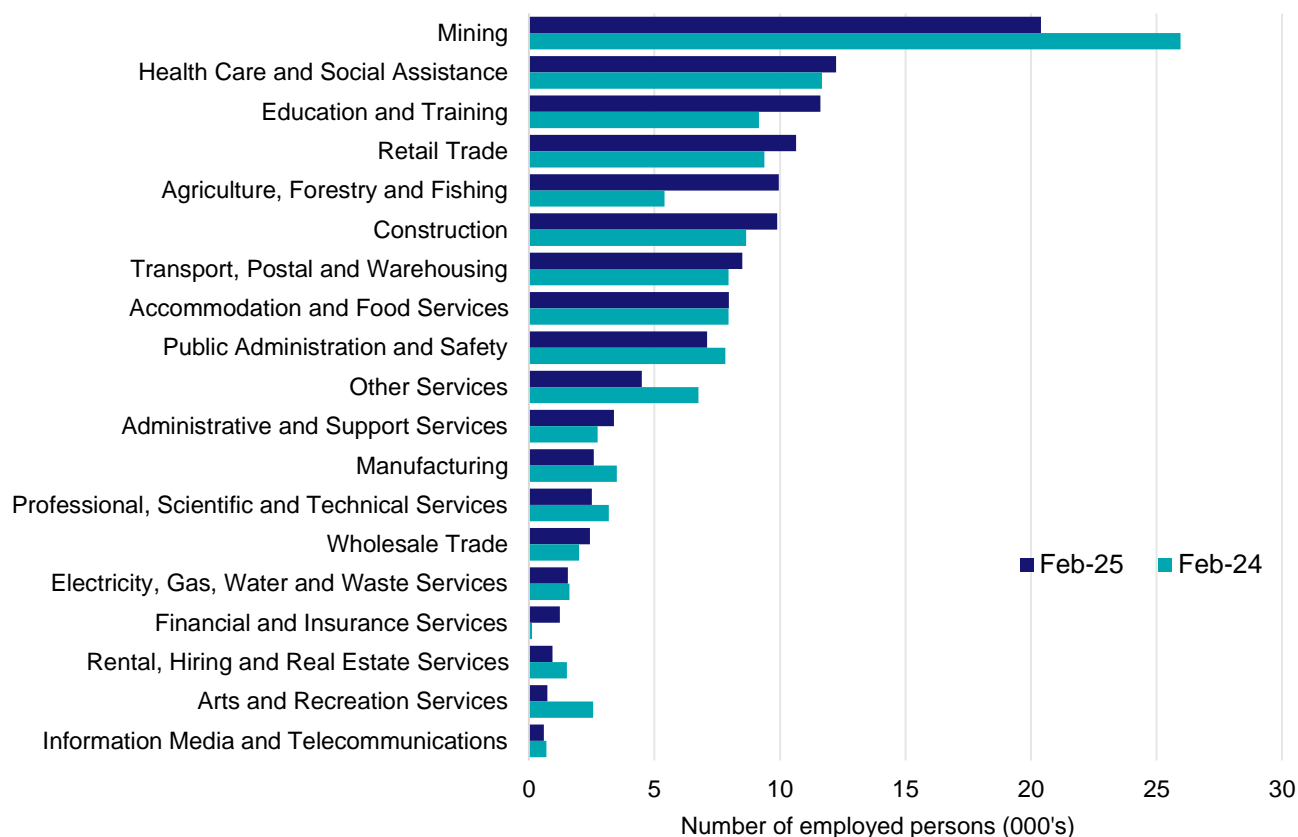
In February 2025, there were around 118,700 people employed in the Gerladton Employment Region. The 5 largest employing industries in the region were Mining, Health Care and Social Assistance, Education and Training, Retail Trade, and Agriculture, Forestry and Fishing. Together these 5 industries accounted for 55% of employment in the region.

Over the year to February 2025, employment in:

- Mining fell by 21.4% to stand at 20,400
- Health Care and Social Assistance rose by 4.8% to stand at 12,200
- Education and Training rose by 26.7% to stand at 11,600.

In Mining in the Gerladton Employment Region, 95% of workers were employed full-time; 78% were male; and the median age of the workforce was 41.

Employment by industry, February 2025 and February 2024



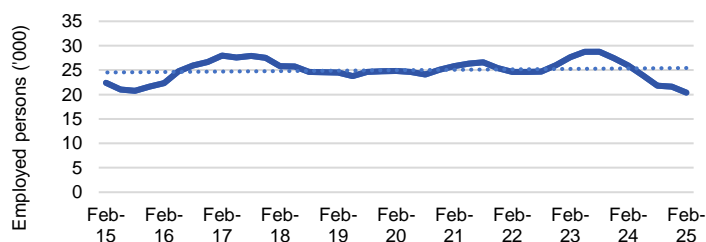
Source: ABS Labour Force Survey*, Detailed, four quarter averages, February 2025. Note that total employment for the region (four quarter averaged data) will not match data published in the Employment Region Labour Market dashboards (modelled estimates).

#N/A

Notes: Data are the latest available. A high degree of caution should be exercised when interpreting data at the regional level, particularly in regards to percentage changes, given the volatility of the underlying data. For any enquiries related to the data in this report, please contact RegionalWorkforceAssessment@jobsandskills.gov.au

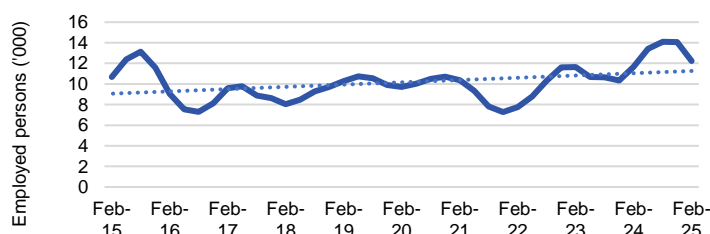
Five largest employing industries: key statistics

Mining



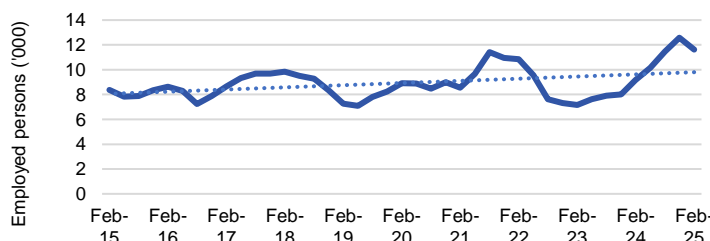
Number employed (Feb-25):	20,400
1 year employment change:	-21.4%
5 year employment change:	-17.9%
10 year employment change:	-9.0%
Youth share of employment:	3.6%
Mature age share of employment:	5.3%

Health Care and Social Assistance



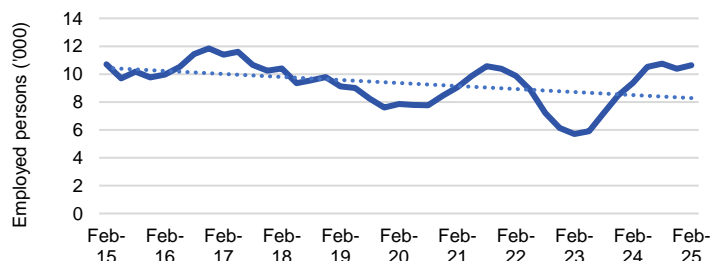
Number employed (Feb-25):	12,200
1 year employment change:	4.8%
5 year employment change:	25.8%
10 year employment change:	14.7%
Youth share of employment:	9.9%
Mature age share of employment:	16.3%

Education and Training



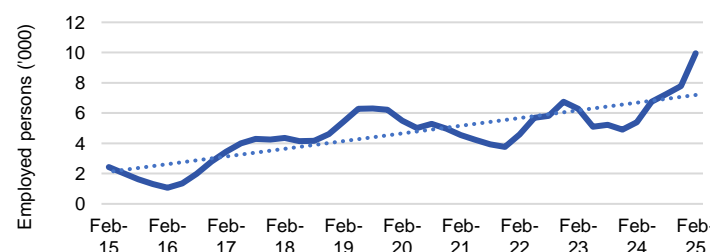
Number employed (Feb-25):	11,600
1 year employment change:	26.7%
5 year employment change:	30.4%
10 year employment change:	38.7%
Youth share of employment:	4.0%
Mature age share of employment:	11.8%

Retail Trade



Number employed (Feb-25):	10,600
1 year employment change:	13.5%
5 year employment change:	35.4%
10 year employment change:	-0.6%
Youth share of employment:	24.0%
Mature age share of employment:	8.4%

Agriculture, Forestry and Fishing



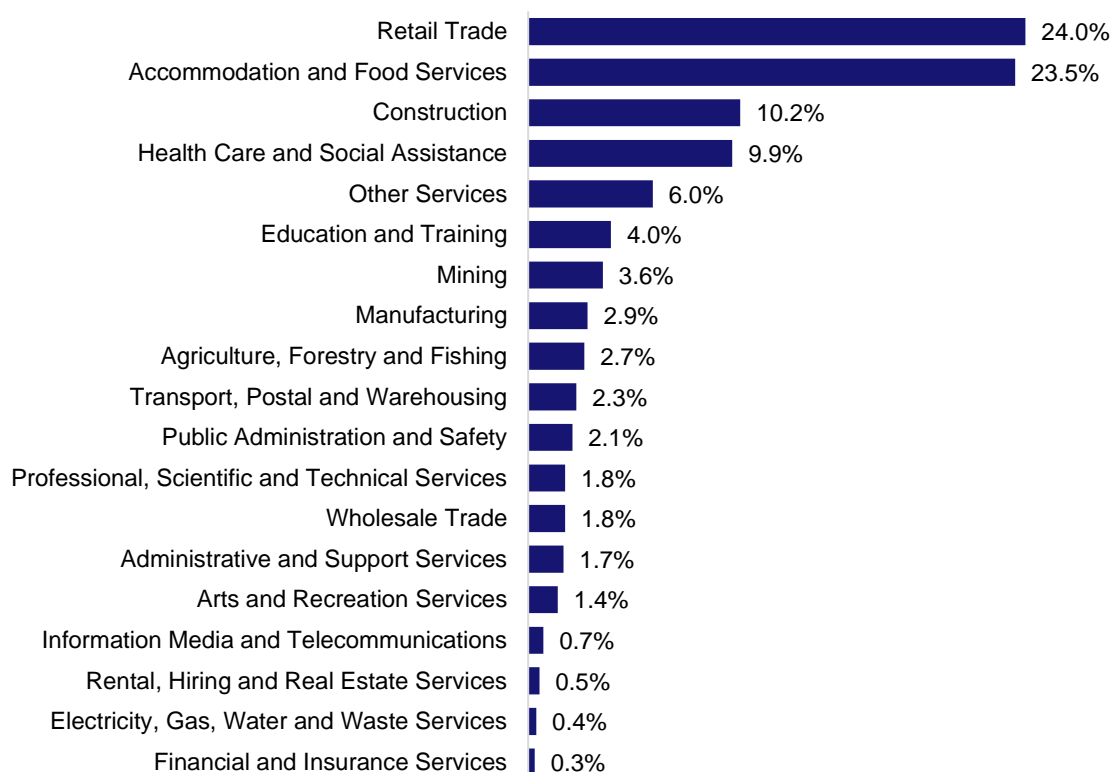
Number employed (Feb-25):	10,000
1 year employment change:	84.3%
5 year employment change:	81.2%
10 year employment change:	307.4%
Youth share of employment:	2.7%
Mature age share of employment:	5.1%

Source: ABS Labour Force Survey, Detailed, four quarter averages, February 2025, except youth and mature age data which are from the ABS Census of Population and Housing, 2021.

Notes: In each chart, the solid line is the level of employment and the dotted line is a simple linear trend line for the 10 year period. Given the volatility of the underlying data, employment estimates should be treated with a high degree of caution. Particular focus should be placed on the employment series over time to ascertain more reliable long-term growth trends.

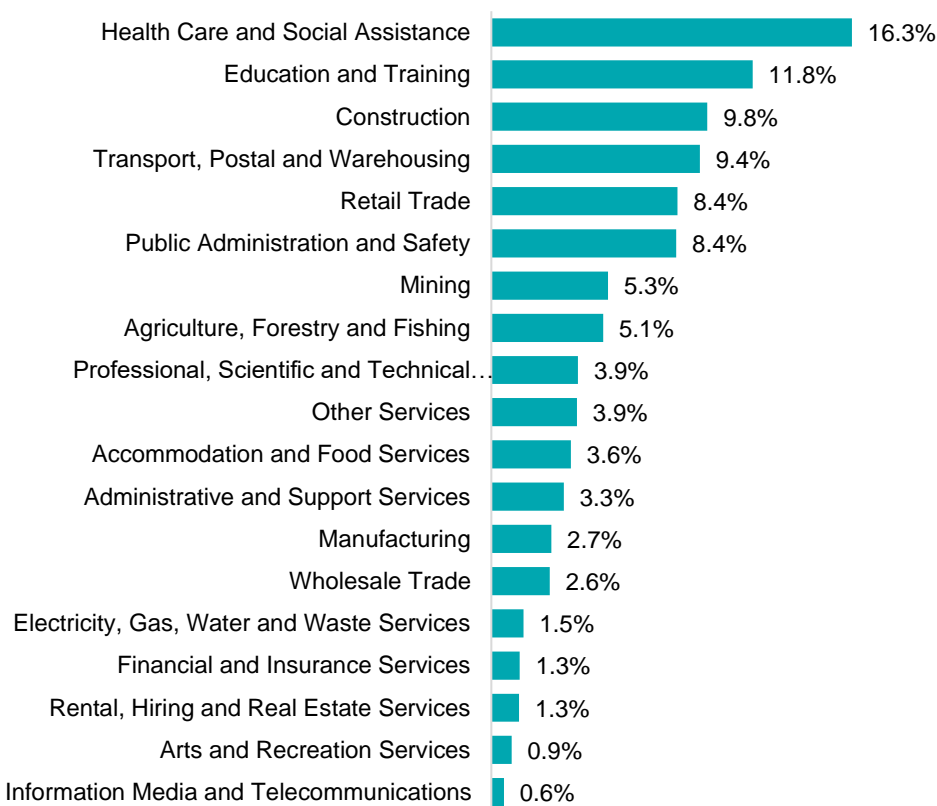
Employment characteristics by Industry

Which industries are youth (aged 15-24) employed in?



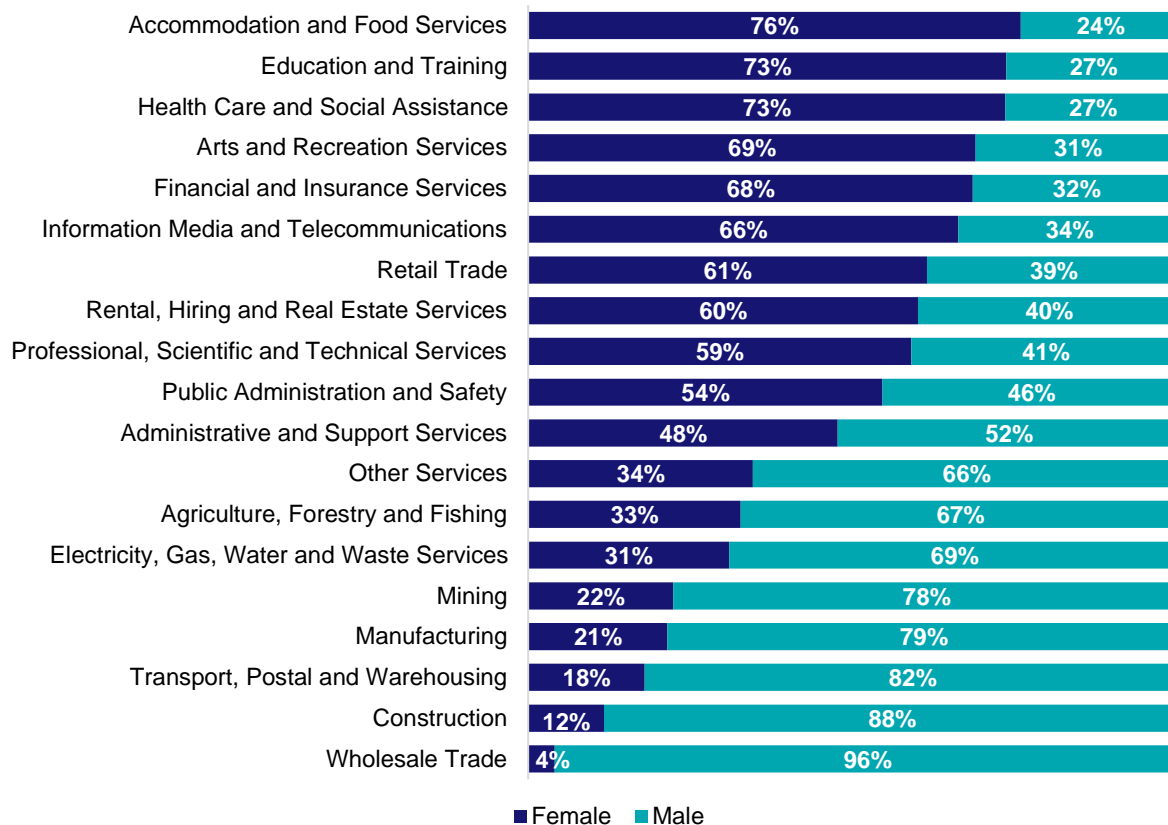
Source: ABS Census of Population and Housing, 2021.

Which industries are mature age persons (aged 55+) employed in?



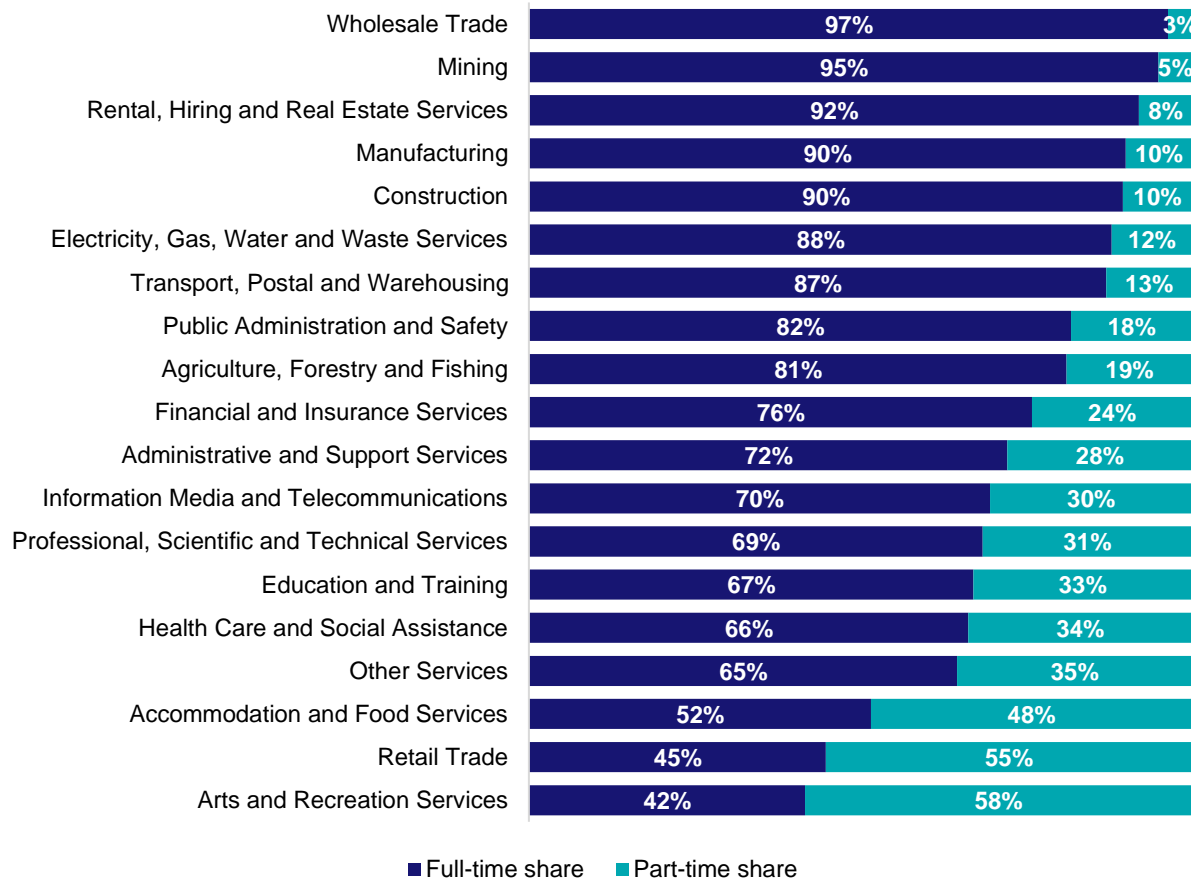
Source: ABS Census of Population and Housing, 2021. Note: SA2 level Census data have been aggregated to the Employment Region level.

Gender share by industry



Source: ABS Labour Force Survey, Detailed, four quarter averages, February 2025.

Full-time and part-time employment status by industry



Source: ABS Labour Force Survey, Detailed, four quarter averages, February 2025.

Appendix

Employment by industry, Gerladton, February 2025

Industry (in order of size)	Share of employment in the region Feb-25 (%)	Employed ('000)			Full-time share %	Part-time share %	Median age *
		Feb-25	Feb-24	Feb-20			
Mining	17.2	20.4	26.0	24.8	95.1	4.9	41
Health Care and Social Assistance	10.3	12.2	11.7	9.7	66.3	33.7	44
Education and Training	9.8	11.6	9.2	8.9	67.1	32.9	46
Retail Trade	9.0	10.6	9.4	7.9	44.8	55.2	34
Agriculture, Forestry and Fishing	8.4	10.0	5.4	5.5	81.2	18.8	48
Construction	8.3	9.9	8.7	11.1	89.7	10.3	40
Transport, Postal and Warehousing	7.2	8.5	7.9	6.5	87.2	12.8	48
Accommodation and Food Services	6.7	8.0	7.9	6.6	51.6	48.4	23
Public Administration and Safety	6.0	7.1	7.8	10.0	81.9	18.1	47
Other Services	3.8	4.5	6.8	3.2	64.7	35.3	38
Administrative and Support Services	2.8	3.4	2.7	2.8	72.2	27.8	45
Manufacturing	2.2	2.6	3.5	3.7	90.1	9.9	42
Professional, Scientific and Technical Services	2.1	2.5	3.2	3.7	68.5	31.5	44
Wholesale Trade	2.1	2.4	2.0	2.1	96.5	3.5	43
Electricity, Gas, Water and Waste Services	1.3	1.5	1.6	1.4	88.0	12.0	53
Financial and Insurance Services	1.0	1.2	0.1	0.6	76.0	24.0	48
Rental, Hiring and Real Estate Services	0.8	0.9	1.5	2.0	92.1	7.9	48
Arts and Recreation Services	0.6	0.7	2.6	1.5	41.7	58.3	38
Information Media and Telecommunications	0.5	0.6	0.7	0.8	69.6	30.4	27
All industries	100.0	118.7	118.7	112.6	75.8	24.2	42

Source: ABS Labour Force Survey, Detailed, four quarter averages, February 2025. *Median age is from the ABS Census of Population and Housing, 2021. Median age has been derived using aggregated SA2s for the Employment Region.

Note: Small cells should be viewed with caution due to small sample sizes and regional volatility.

Employment Region Industry profile

Great Southern - Wheatbelt Employment Region

Release date: 27 March 2025

Overview

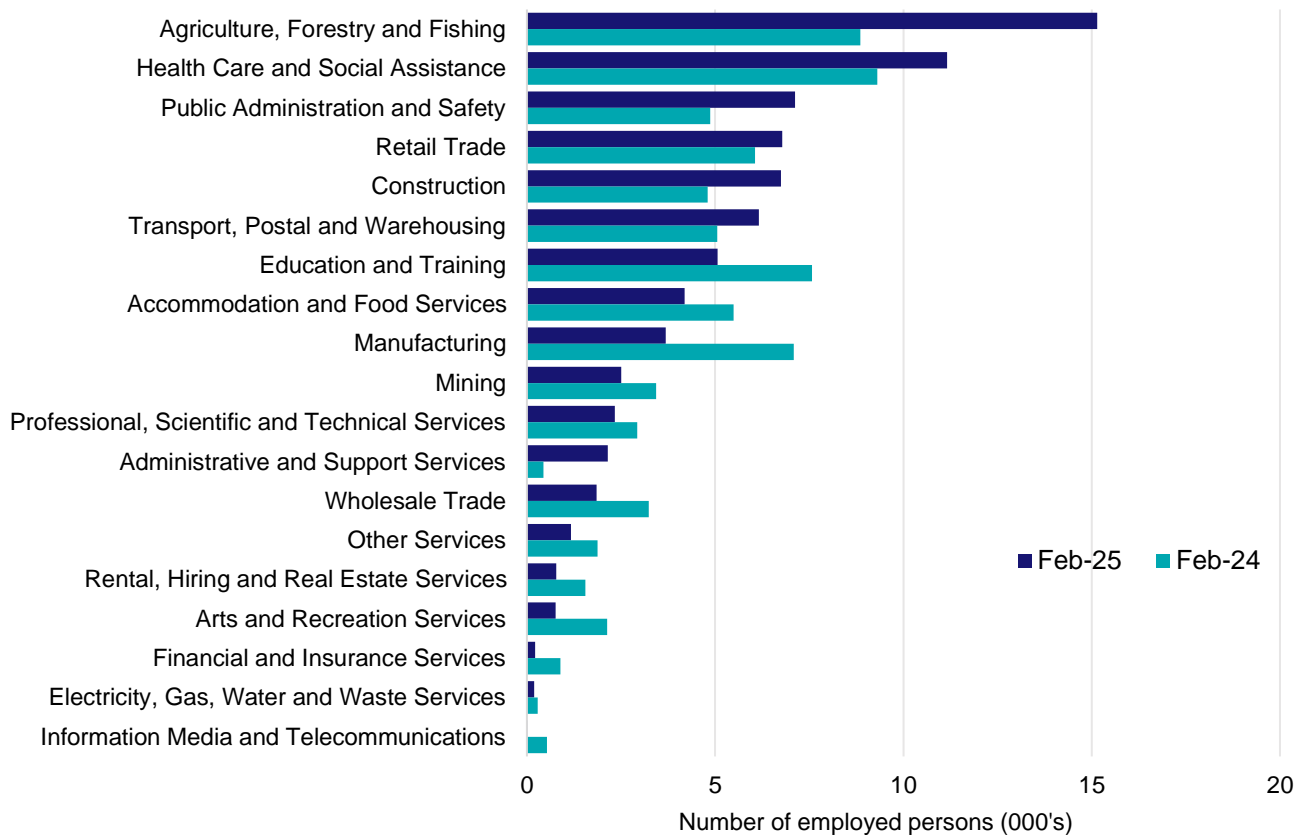
In February 2025, there were around 78,000 people employed in the Great Southern - Wheatbelt Employment Region. The 5 largest employing industries in the region were Agriculture, Forestry and Fishing, Health Care and Social Assistance, Public Administration and Safety, Retail Trade, and Construction. Together these 5 industries accounted for 60% of employment in the region.

Over the year to February 2025, employment in:

- Agriculture, Forestry and Fishing rose by 71.0% to stand at 15,100
- Health Care and Social Assistance rose by 19.9% to stand at 11,200
- Public Administration and Safety rose by 46.3% to stand at 7,100.

In Agriculture, Forestry and Fishing in the Great Southern - Wheatbelt Employment Region, 69% of workers were employed full-time; 74% were male; and the median age of the workforce was 50.

Employment by industry, February 2025 and February 2024



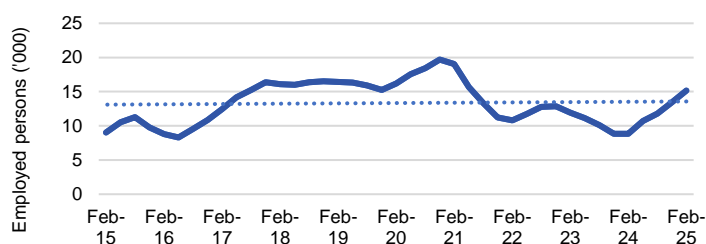
Source: ABS Labour Force Survey*, Detailed, four quarter averages, February 2025. Note that total employment for the region (four quarter averaged data) will not match data published in the Employment Region Labour Market dashboards (modelled estimates).

*ABS Labour Force Survey data are based on the Western Australia - Wheat Belt SA4.

Notes: Data are the latest available. A high degree of caution should be exercised when interpreting data at the regional level, particularly in regards to percentage changes, given the volatility of the underlying data. For any enquiries related to the data in this report, please contact RegionalWorkforceAssessment@jobsandskills.gov.au

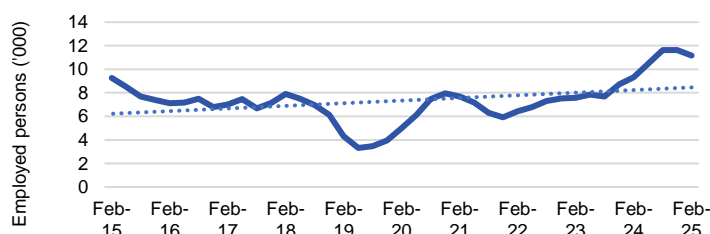
Five largest employing industries: key statistics

Agriculture, Forestry and Fishing



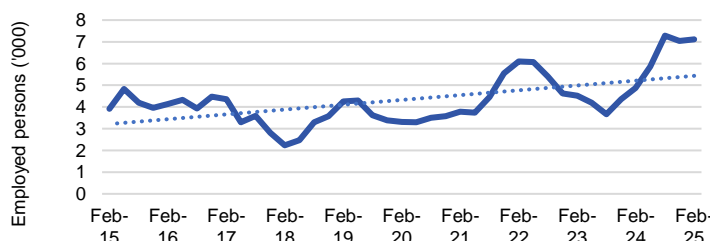
Number employed (Feb-25):	15,100
1 year employment change:	71.0%
5 year employment change:	-6.5%
10 year employment change:	67.6%
Youth share of employment:	14.3%
Mature age share of employment:	25.8%

Health Care and Social Assistance



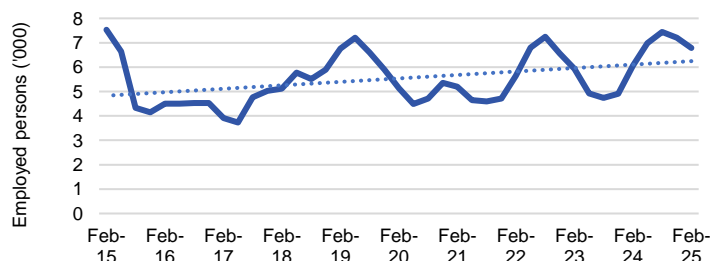
Number employed (Feb-25):	11,200
1 year employment change:	19.9%
5 year employment change:	122.9%
10 year employment change:	20.5%
Youth share of employment:	7.5%
Mature age share of employment:	12.4%

Public Administration and Safety



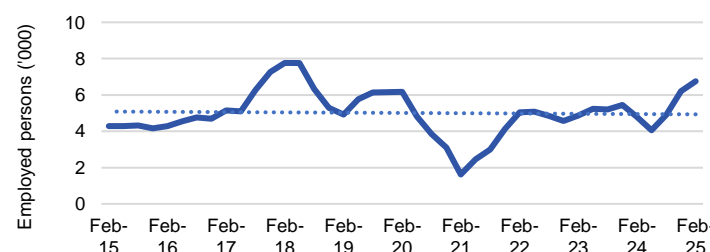
Number employed (Feb-25):	7,100
1 year employment change:	46.3%
5 year employment change:	115.1%
10 year employment change:	81.8%
Youth share of employment:	2.8%
Mature age share of employment:	7.0%

Retail Trade



Number employed (Feb-25):	6,800
1 year employment change:	11.9%
5 year employment change:	32.2%
10 year employment change:	-9.9%
Youth share of employment:	18.9%
Mature age share of employment:	6.7%

Construction



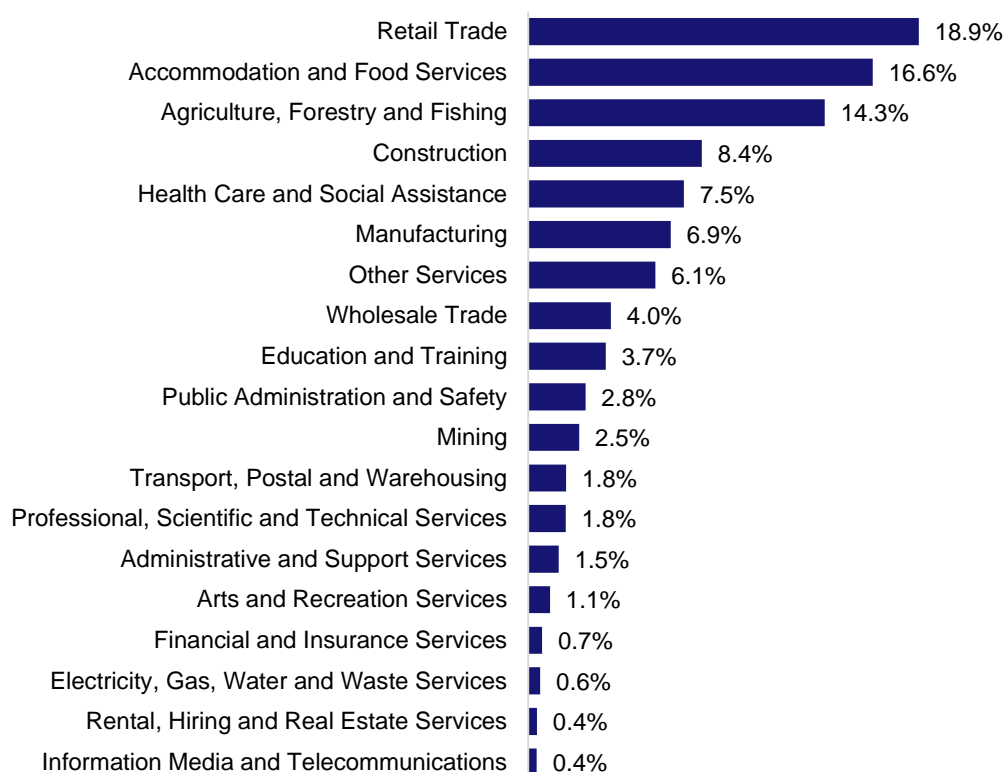
Number employed (Feb-25):	6,700
1 year employment change:	40.7%
5 year employment change:	9.5%
10 year employment change:	57.6%
Youth share of employment:	8.4%
Mature age share of employment:	6.7%

Source: ABS Labour Force Survey, Detailed, four quarter averages, February 2025, except youth and mature age data which are from the ABS Census of Population and Housing, 2021.

Notes: In each chart, the solid line is the level of employment and the dotted line is a simple linear trend line for the 10 year period. Given the volatility of the underlying data, employment estimates should be treated with a high degree of caution. Particular focus should be placed on the employment series over time to ascertain more reliable long-term growth trends.

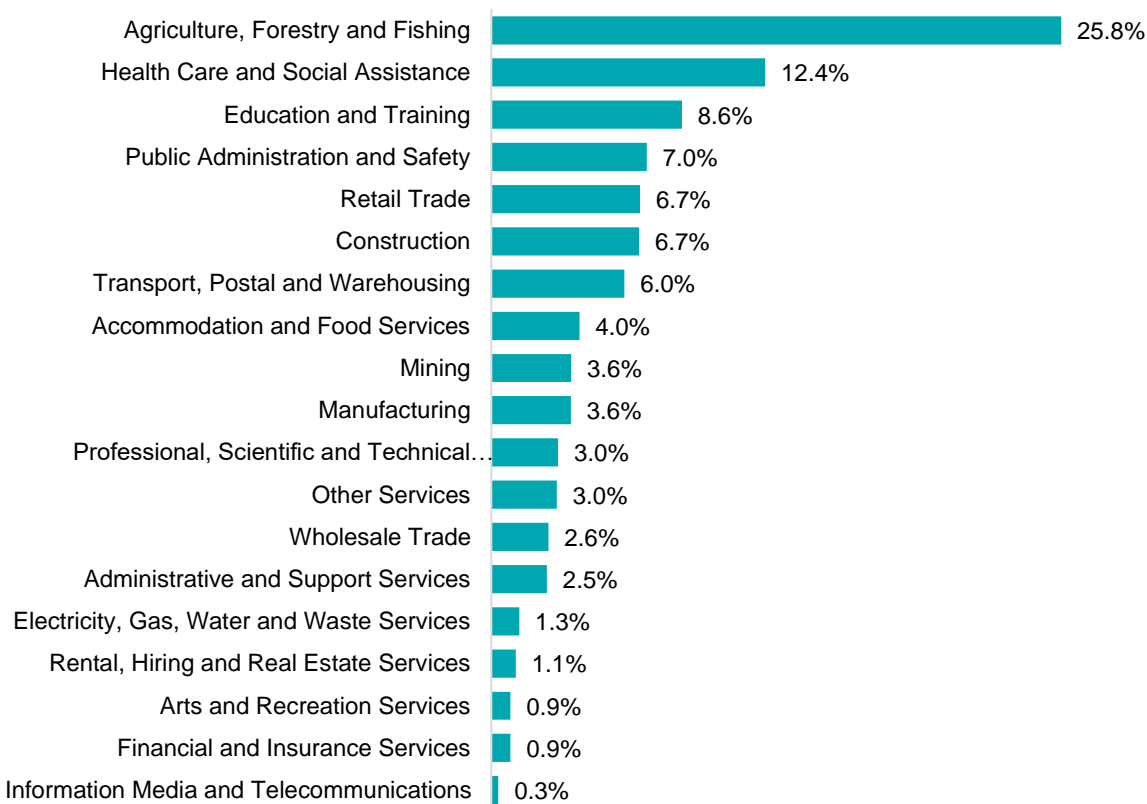
Employment characteristics by Industry

Which industries are youth (aged 15-24) employed in?



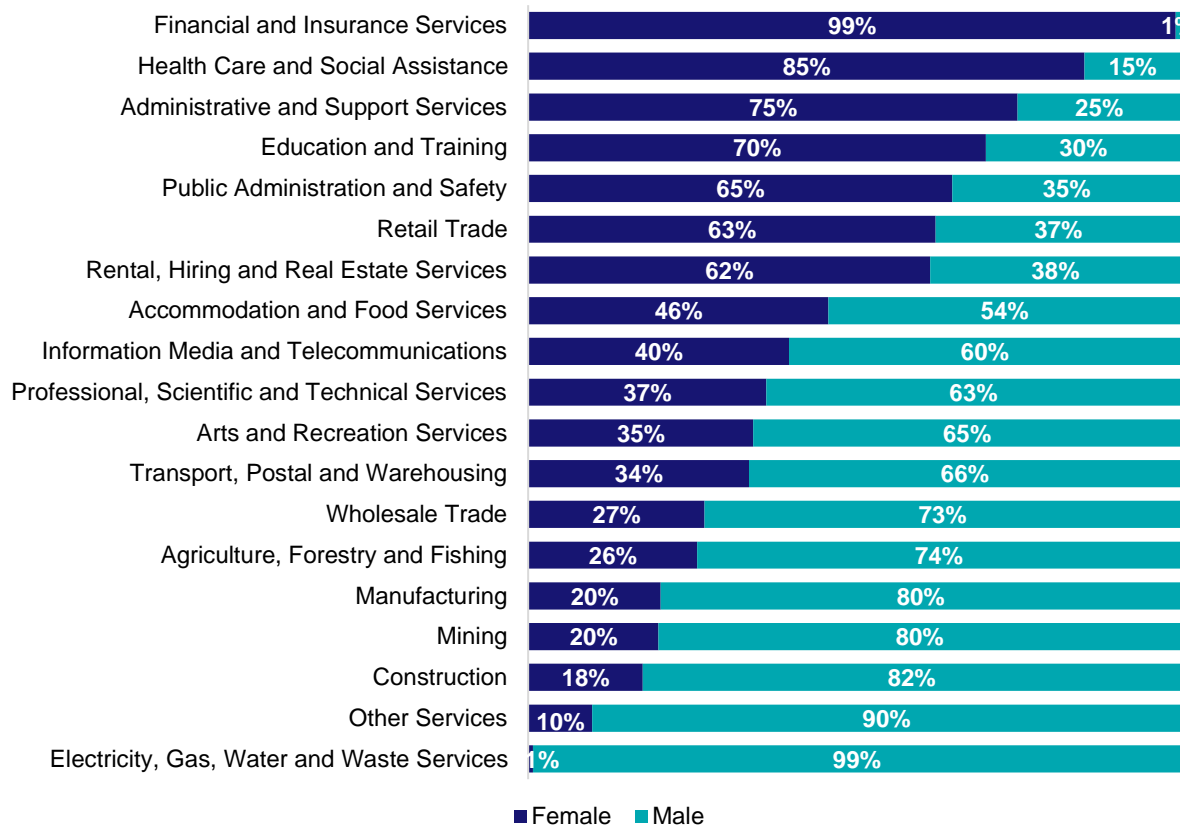
Source: ABS Census of Population and Housing, 2021.

Which industries are mature age persons (aged 55+) employed in?



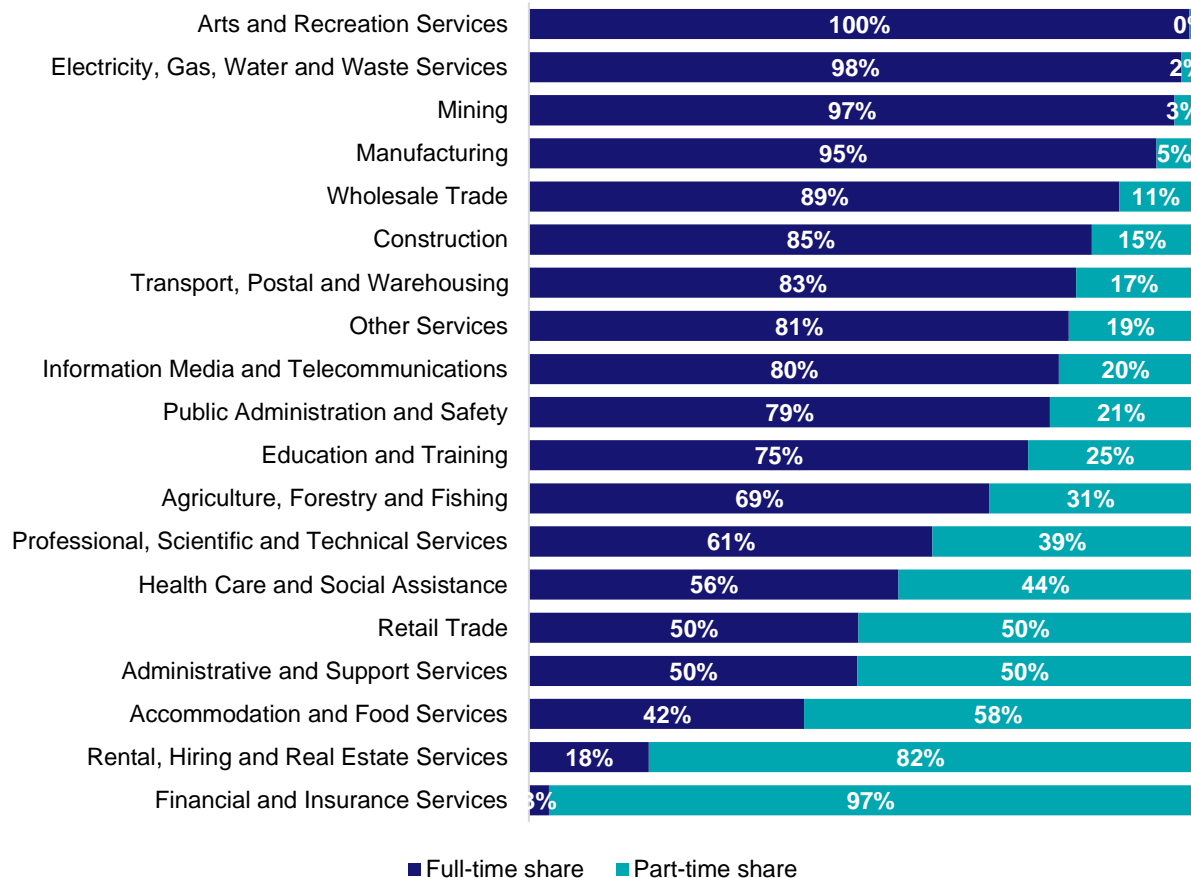
Source: ABS Census of Population and Housing, 2021. Note: SA2 level Census data have been aggregated to the Employment Region level.

Gender share by industry



Source: ABS Labour Force Survey, Detailed, four quarter averages, February 2025.

Full-time and part-time employment status by industry



Source: ABS Labour Force Survey, Detailed, four quarter averages, February 2025.

Appendix

Employment by industry, Great Southern - Wheatbelt, February 2025

Industry (in order of size)	Share of employment in the region Feb-25 (%)	Employed ('000)			Full-time share %	Part-time share %	Median age *
		Feb-25	Feb-24	Feb-20			
Agriculture, Forestry and Fishing	19.4	15.1	8.9	16.2	69.5	30.5	50
Health Care and Social Assistance	14.3	11.2	9.3	5.0	55.8	44.2	48
Public Administration and Safety	9.1	7.1	4.9	3.3	78.7	21.3	50
Retail Trade	8.7	6.8	6.1	5.1	49.8	50.2	40
Construction	8.6	6.7	4.8	6.2	85.0	15.0	44
Transport, Postal and Warehousing	7.9	6.2	5.1	3.4	82.6	17.4	53
Education and Training	6.5	5.1	7.6	8.3	75.4	24.6	48
Accommodation and Food Services	5.4	4.2	5.5	2.9	41.6	58.4	33
Manufacturing	4.7	3.7	7.1	5.2	94.7	5.3	42
Mining	3.2	2.5	3.4	3.4	97.5	2.5	45
Professional, Scientific and Technical Services	3.0	2.3	2.9	2.3	60.9	39.1	46
Administrative and Support Services	2.8	2.1	0.4	1.4	49.6	50.4	50
Wholesale Trade	2.4	1.9	3.2	2.3	89.1	10.9	44
Other Services	1.5	1.2	1.9	2.3	81.5	18.5	41
Rental, Hiring and Real Estate Services	1.0	0.8	1.6	1.1	18.1	81.9	52
Arts and Recreation Services	1.0	0.8	2.1	1.0	99.7	0.3	40
Financial and Insurance Services	0.3	0.2	0.9	0.7	3.0	97.0	45
Electricity, Gas, Water and Waste Services	0.3	0.2	0.3	2.0	98.5	1.5	45
Information Media and Telecommunications	0.0	0.0	0.5	0.8	80.0	20.0	36
All industries	100.0	78.0	76.4	72.9	69.5	30.5	47

Source: ABS Labour Force Survey, Detailed, four quarter averages, February 2025. *Median age is from the ABS Census of Population and Housing, 2021. Median age has been derived using aggregated SA2s for the Employment Region.

Note: Small cells should be viewed with caution due to small sample sizes and regional volatility.



Employment Region Industry profile

Kalgoorlie Employment Region

Release date: 27 March 2025

Overview

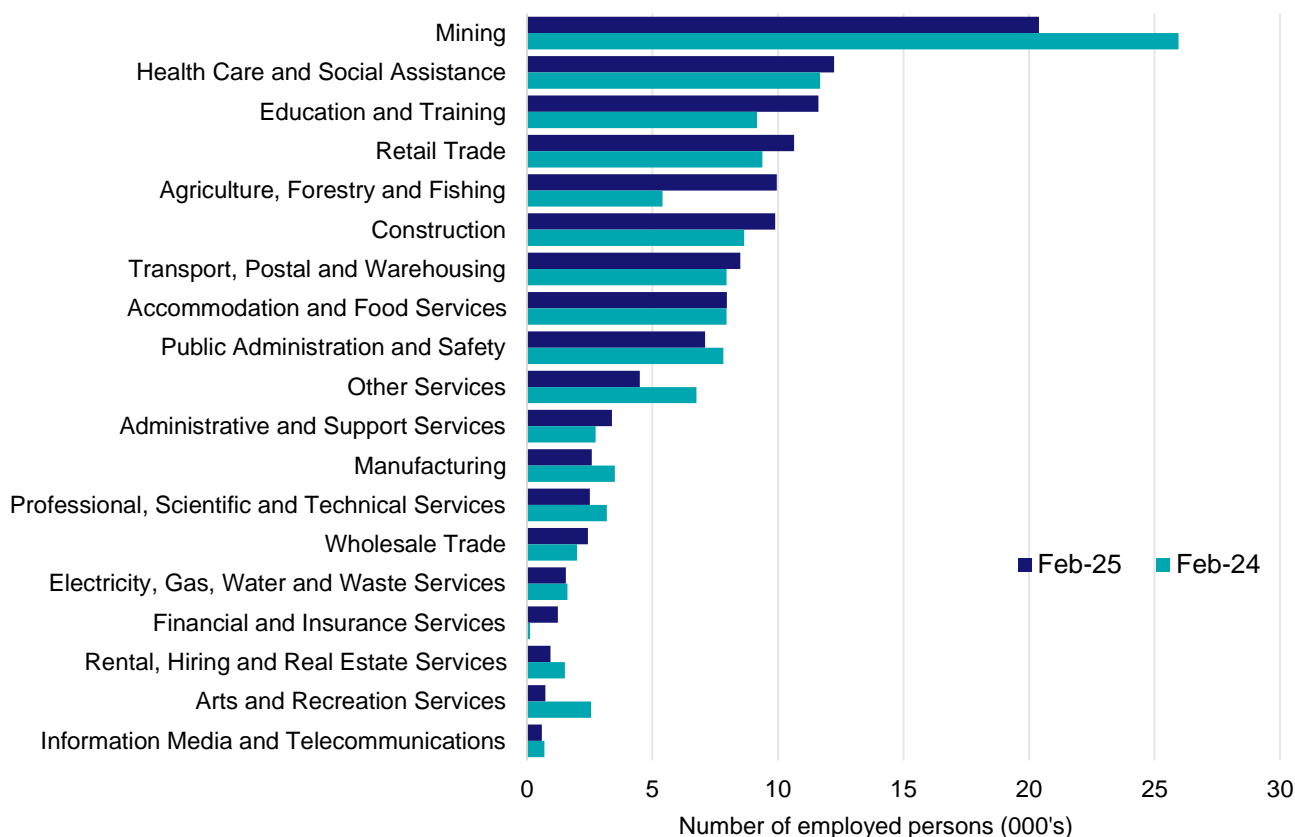
In February 2025, there were around 118,700 people employed in the Kalgoorlie Employment Region. The 5 largest employing industries in the region were Mining, Health Care and Social Assistance, Education and Training, Retail Trade, and Agriculture, Forestry and Fishing. Together these 5 industries accounted for 55% of employment in the region.

Over the year to February 2025, employment in:

- Mining fell by 21.4% to stand at 20,400
- Health Care and Social Assistance rose by 4.8% to stand at 12,200
- Education and Training rose by 26.7% to stand at 11,600.

In Mining in the Kalgoorlie Employment Region, 95% of workers were employed full-time; 78% were male; and the median age of the workforce was 39.

Employment by industry, February 2025 and February 2024



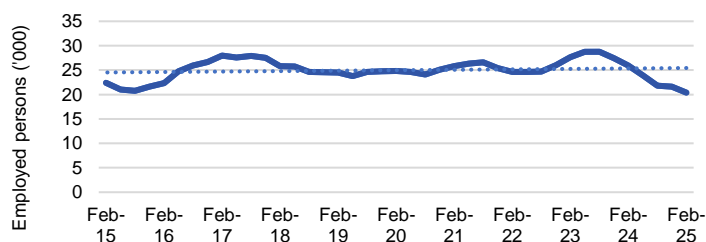
Source: ABS Labour Force Survey*, Detailed, four quarter averages, February 2025. Note that total employment for the region (four quarter averaged data) will not match data published in the Employment Region Labour Market dashboards (modelled estimates).

*ABS Labour Force Survey data are based on the Western Australia - Outback (North and South) SA4. This SA4 is very large and covers much of regional and remote WA and is not a good fit for this Employment Region, but is the only data readily available.

Notes: Data are the latest available. A high degree of caution should be exercised when interpreting data at the regional level, particularly in regards to percentage changes, given the volatility of the underlying data. For any enquiries related to the data in this report, please contact RegionalWorkforceAssessment@jobsandskills.gov.au

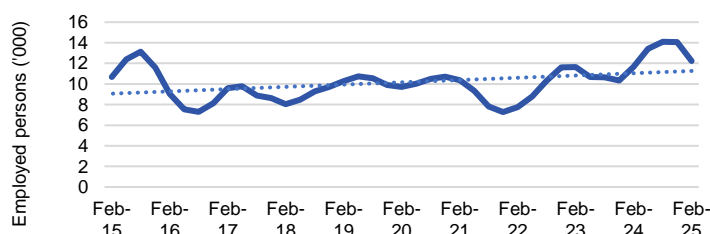
Five largest employing industries: key statistics

Mining



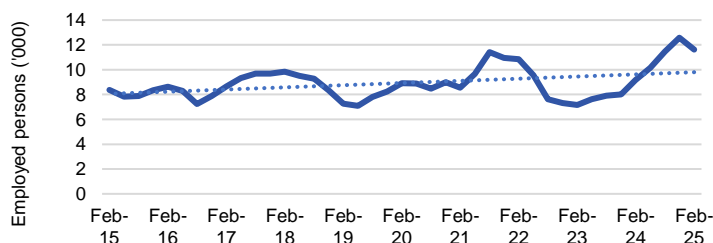
Number employed (Feb-25):	20,400
1 year employment change:	-21.4%
5 year employment change:	-17.9%
10 year employment change:	-9.0%
Youth share of employment:	21.6%
Mature age share of employment:	23.1%

Health Care and Social Assistance



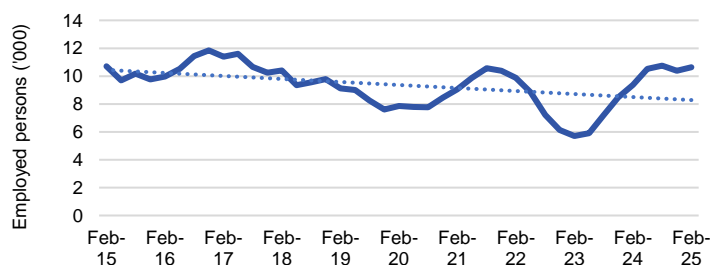
Number employed (Feb-25):	12,200
1 year employment change:	4.8%
5 year employment change:	25.8%
10 year employment change:	14.7%
Youth share of employment:	6.8%
Mature age share of employment:	11.3%

Education and Training



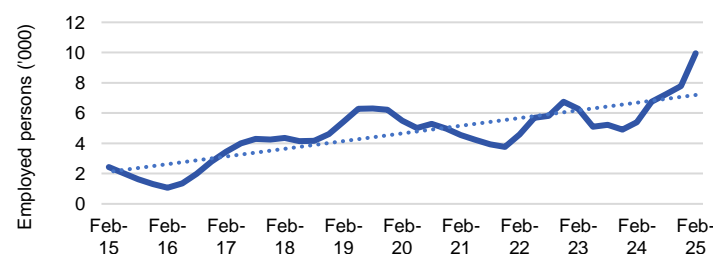
Number employed (Feb-25):	11,600
1 year employment change:	26.7%
5 year employment change:	30.4%
10 year employment change:	38.7%
Youth share of employment:	4.4%
Mature age share of employment:	9.1%

Retail Trade



Number employed (Feb-25):	10,600
1 year employment change:	13.5%
5 year employment change:	35.4%
10 year employment change:	-0.6%
Youth share of employment:	17.1%
Mature age share of employment:	6.6%

Agriculture, Forestry and Fishing



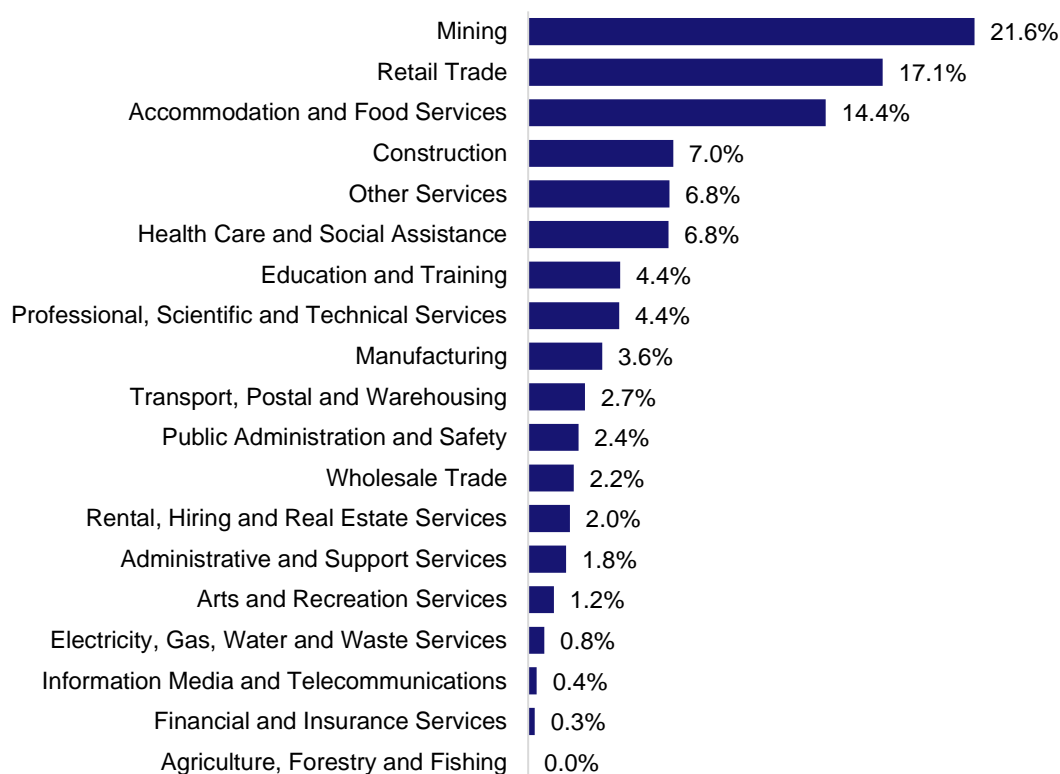
Number employed (Feb-25):	10,000
1 year employment change:	84.3%
5 year employment change:	81.2%
10 year employment change:	307.4%
Youth share of employment:	0.0%
Mature age share of employment:	0.1%

Source: ABS Labour Force Survey, Detailed, four quarter averages, February 2025, except youth and mature age data which are from the ABS Census of Population and Housing, 2021.

Notes: In each chart, the solid line is the level of employment and the dotted line is a simple linear trend line for the 10 year period. Given the volatility of the underlying data, employment estimates should be treated with a high degree of caution. Particular focus should be placed on the employment series over time to ascertain more reliable long-term growth trends.

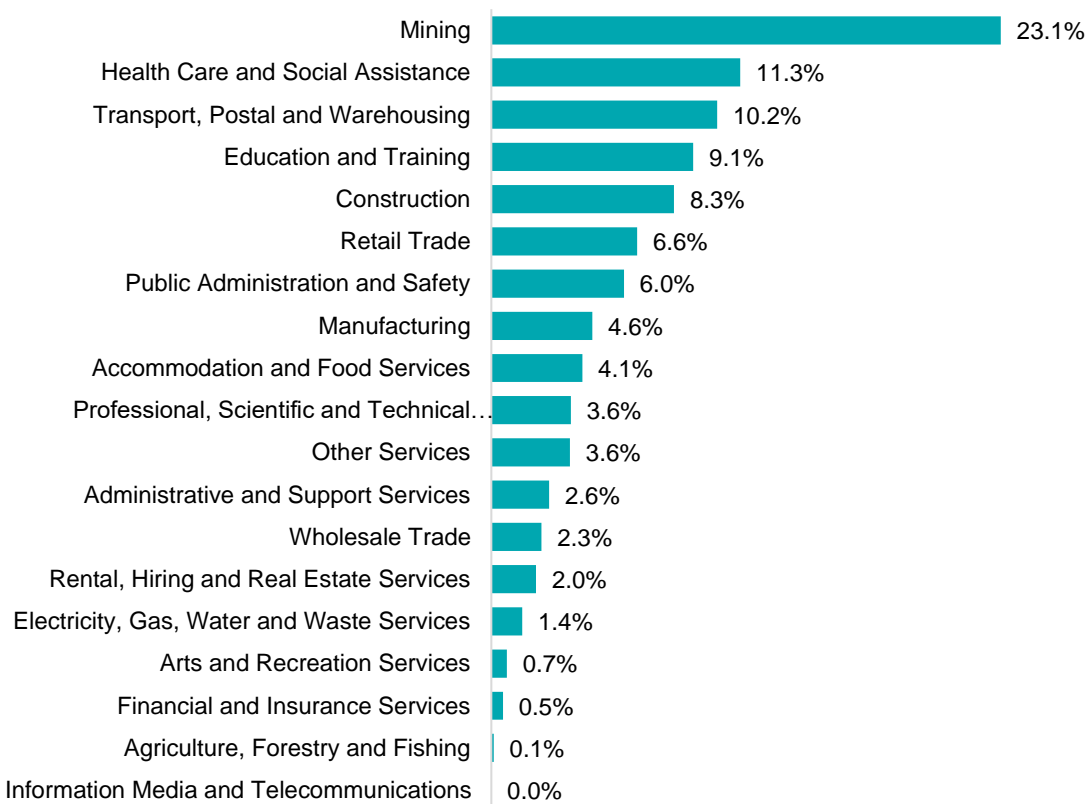
Employment characteristics by Industry

Which industries are youth (aged 15-24) employed in?



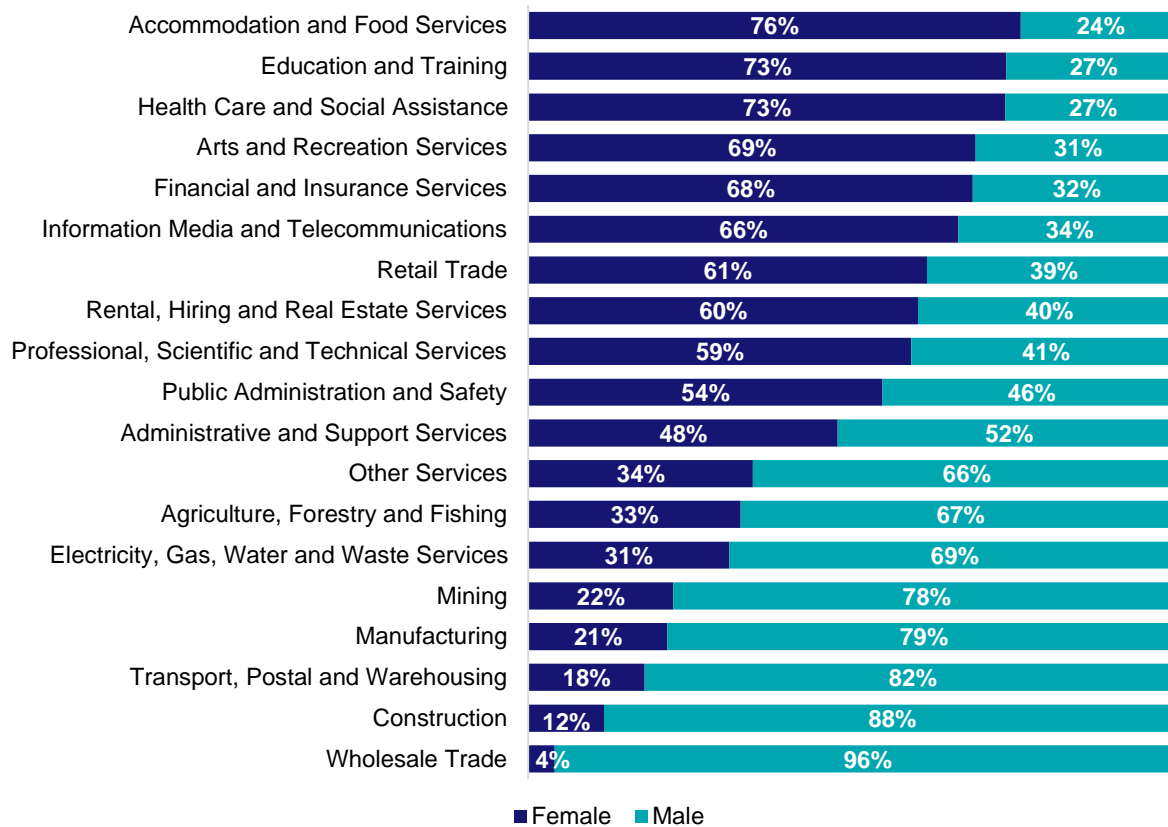
Source: ABS Census of Population and Housing, 2021.

Which industries are mature age persons (aged 55+) employed in?



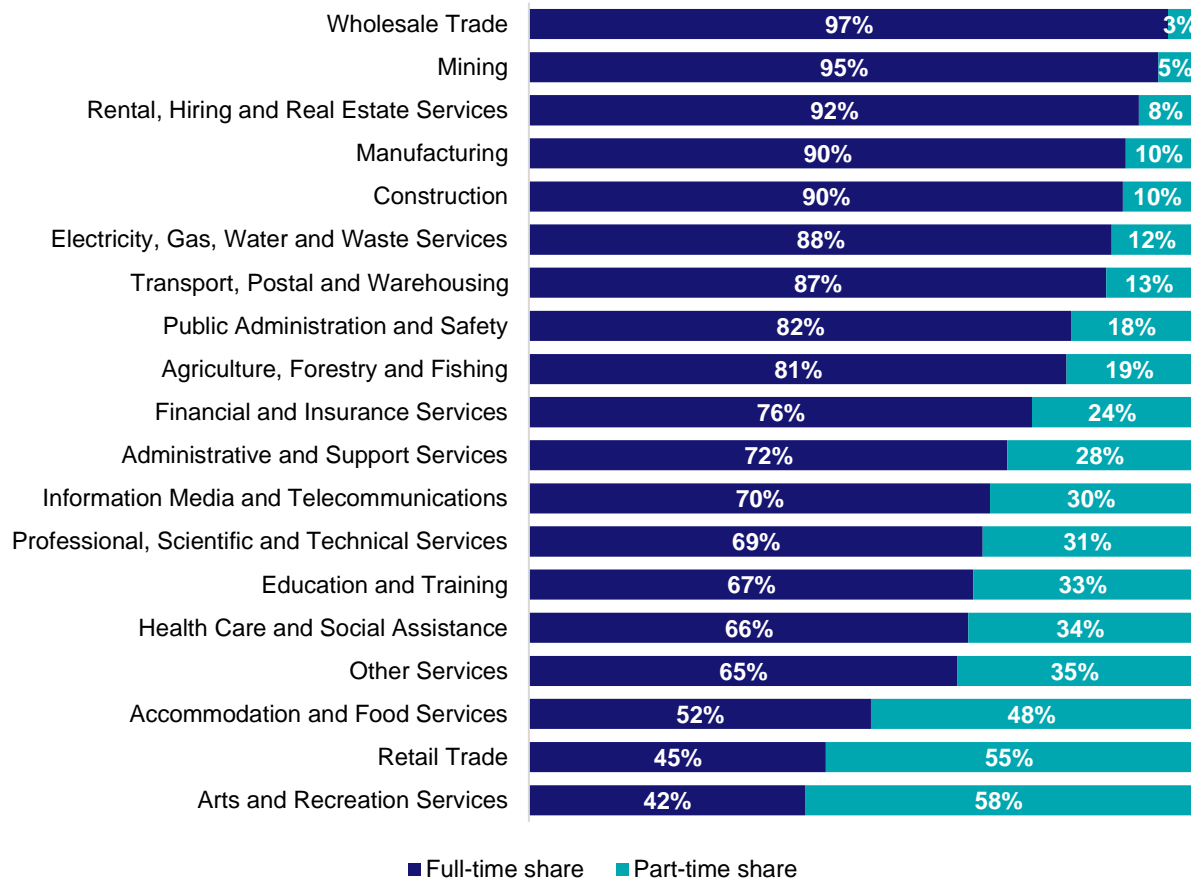
Source: ABS Census of Population and Housing, 2021. Note: SA2 level Census data have been aggregated to the Employment Region level.

Gender share by industry



Source: ABS Labour Force Survey, Detailed, four quarter averages, February 2025.

Full-time and part-time employment status by industry



Source: ABS Labour Force Survey, Detailed, four quarter averages, February 2025.

Appendix

Employment by industry, Kalgoorlie, February 2025

Industry (in order of size)	Share of employment in the region Feb-25 (%)	Employed ('000)			Full-time share %	Part-time share %	Median age *
		Feb-25	Feb-24	Feb-20			
Mining	17.2	20.4	26.0	24.8	95.1	4.9	39
Health Care and Social Assistance	10.3	12.2	11.7	9.7	66.3	33.7	40
Education and Training	9.8	11.6	9.2	8.9	67.1	32.9	44
Retail Trade	9.0	10.6	9.4	7.9	44.8	55.2	34
Agriculture, Forestry and Fishing	8.4	10.0	5.4	5.5	81.2	18.8	31
Construction	8.3	9.9	8.7	11.1	89.7	10.3	39
Transport, Postal and Warehousing	7.2	8.5	7.9	6.5	87.2	12.8	50
Accommodation and Food Services	6.7	8.0	7.9	6.6	51.6	48.4	32
Public Administration and Safety	6.0	7.1	7.8	10.0	81.9	18.1	42
Other Services	3.8	4.5	6.8	3.2	64.7	35.3	37
Administrative and Support Services	2.8	3.4	2.7	2.8	72.2	27.8	41
Manufacturing	2.2	2.6	3.5	3.7	90.1	9.9	38
Professional, Scientific and Technical Services	2.1	2.5	3.2	3.7	68.5	31.5	37
Wholesale Trade	2.1	2.4	2.0	2.1	96.5	3.5	36
Electricity, Gas, Water and Waste Services	1.3	1.5	1.6	1.4	88.0	12.0	47
Financial and Insurance Services	1.0	1.2	0.1	0.6	76.0	24.0	39
Rental, Hiring and Real Estate Services	0.8	0.9	1.5	2.0	92.1	7.9	40
Arts and Recreation Services	0.6	0.7	2.6	1.5	41.7	58.3	36
Information Media and Telecommunications	0.5	0.6	0.7	0.8	69.6	30.4	32
All industries	100.0	118.7	118.7	112.6	75.8	24.2	39

Source: ABS Labour Force Survey, Detailed, four quarter averages, February 2025. *Median age is from the ABS Census of Population and Housing, 2021. Median age has been derived using aggregated SA2s for the Employment Region.

Note: Small cells should be viewed with caution due to small sample sizes and regional volatility.

Employment Region Industry profile

Perth - North Employment Region

Release date: 27 March 2025

Overview

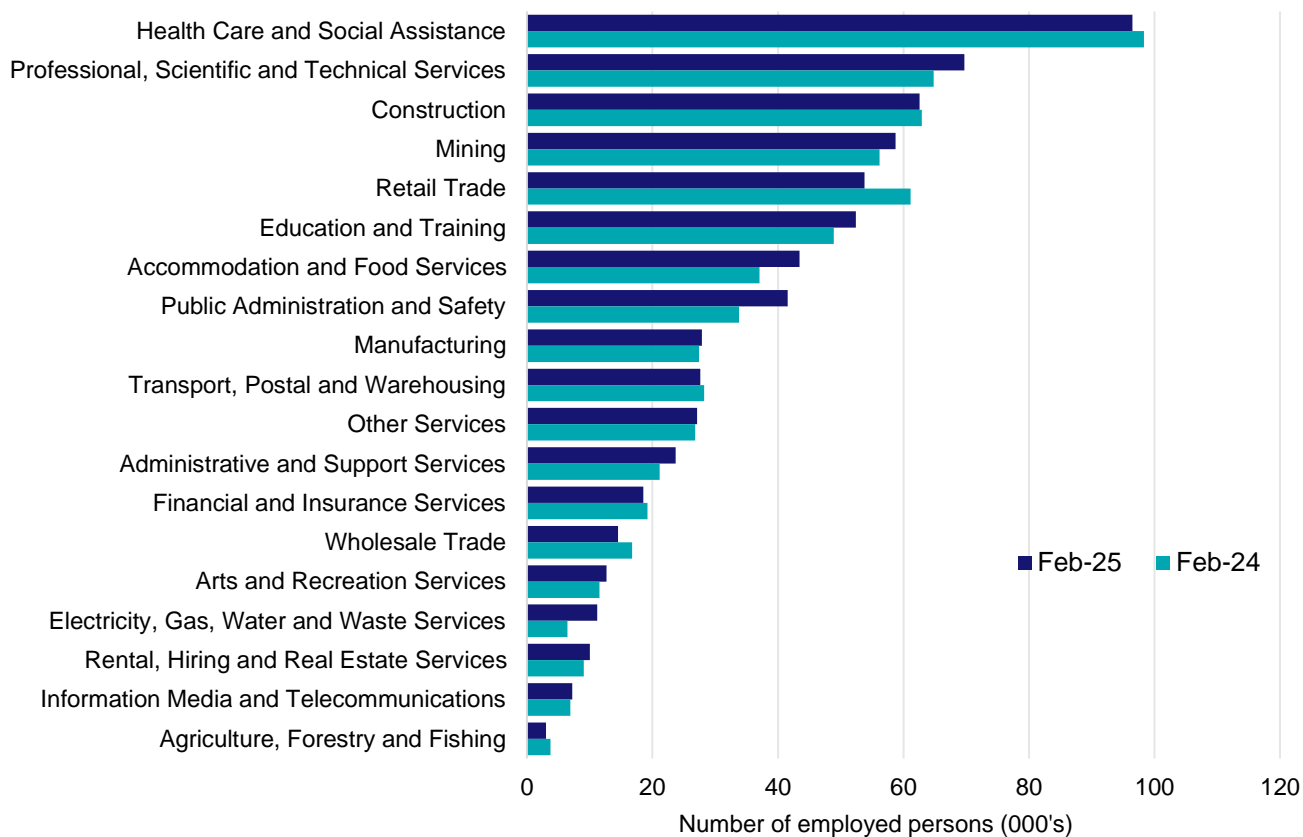
In February 2025, there were around 662,300 people employed in the Perth - North Employment Region. The 5 largest employing industries in the region were Health Care and Social Assistance, Professional, Scientific and Technical Services, Construction, Mining, and Retail Trade. Together these 5 industries accounted for 52% of employment in the region.

Over the year to February 2025, employment in:

- Health Care and Social Assistance fell by 1.9% to stand at 96,500
- Professional, Scientific and Technical Services rose by 7.6% to stand at 69,700
- Construction fell by 0.6% to stand at 62,600.

In Health Care and Social Assistance in the Perth - North Employment Region, 53% of workers were employed full-time; 77% were female; and the median age of the workforce was 41.

Employment by industry, February 2025 and February 2024



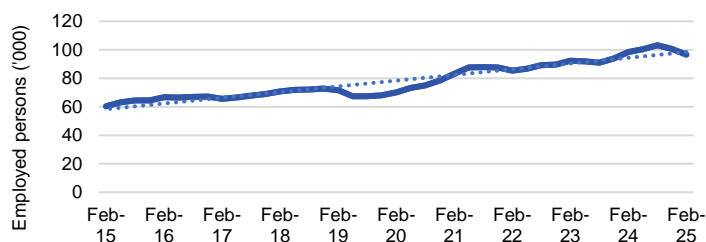
Source: ABS Labour Force Survey*, Detailed, four quarter averages, February 2025. Note that total employment for the region (four quarter averaged data) will not match data published in the Employment Region Labour Market dashboards (modelled estimates).

*ABS Labour Force Survey data are based on the combined SA4s of Perth - Inner; Perth - North East; and Perth - North West.

Notes: Data are the latest available. A high degree of caution should be exercised when interpreting data at the regional level, particularly in regards to percentage changes, given the volatility of the underlying data. For any enquiries related to the data in this report, please contact RegionalWorkforceAssessment@jobsandskills.gov.au

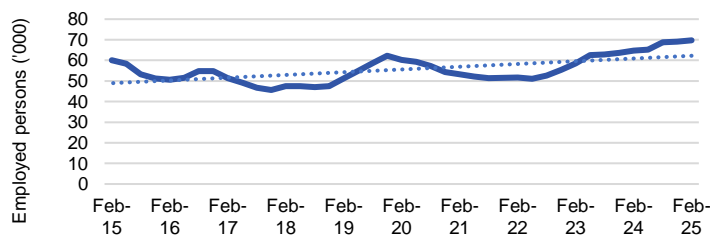
Five largest employing industries: key statistics

Health Care and Social Assistance



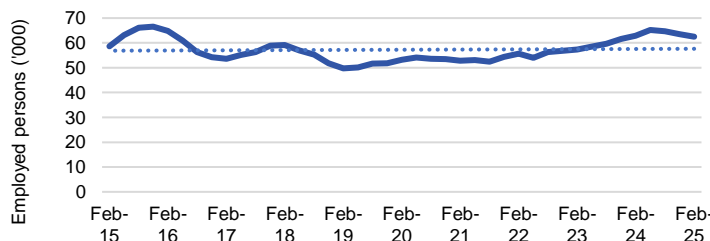
Number employed (Feb-25):	96,500
1 year employment change:	-1.9%
5 year employment change:	37.7%
10 year employment change:	59.9%
Youth share of employment:	9.6%
Mature age share of employment:	16.9%

Professional, Scientific and Technical Services



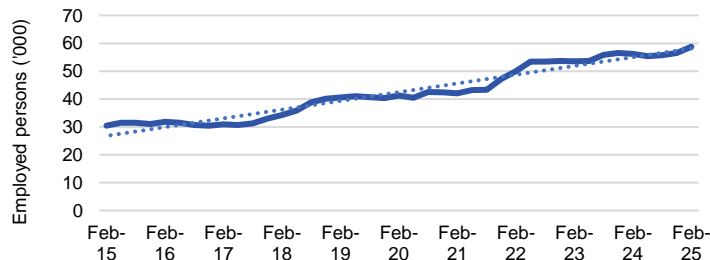
Number employed (Feb-25):	69,700
1 year employment change:	7.6%
5 year employment change:	15.7%
10 year employment change:	15.9%
Youth share of employment:	4.7%
Mature age share of employment:	8.3%

Construction



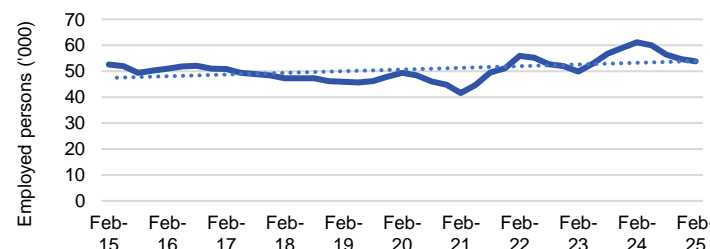
Number employed (Feb-25):	62,600
1 year employment change:	-0.6%
5 year employment change:	17.4%
10 year employment change:	6.8%
Youth share of employment:	7.9%
Mature age share of employment:	8.7%

Mining



Number employed (Feb-25):	58,700
1 year employment change:	4.5%
5 year employment change:	42.4%
10 year employment change:	93.1%
Youth share of employment:	2.6%
Mature age share of employment:	5.2%

Retail Trade



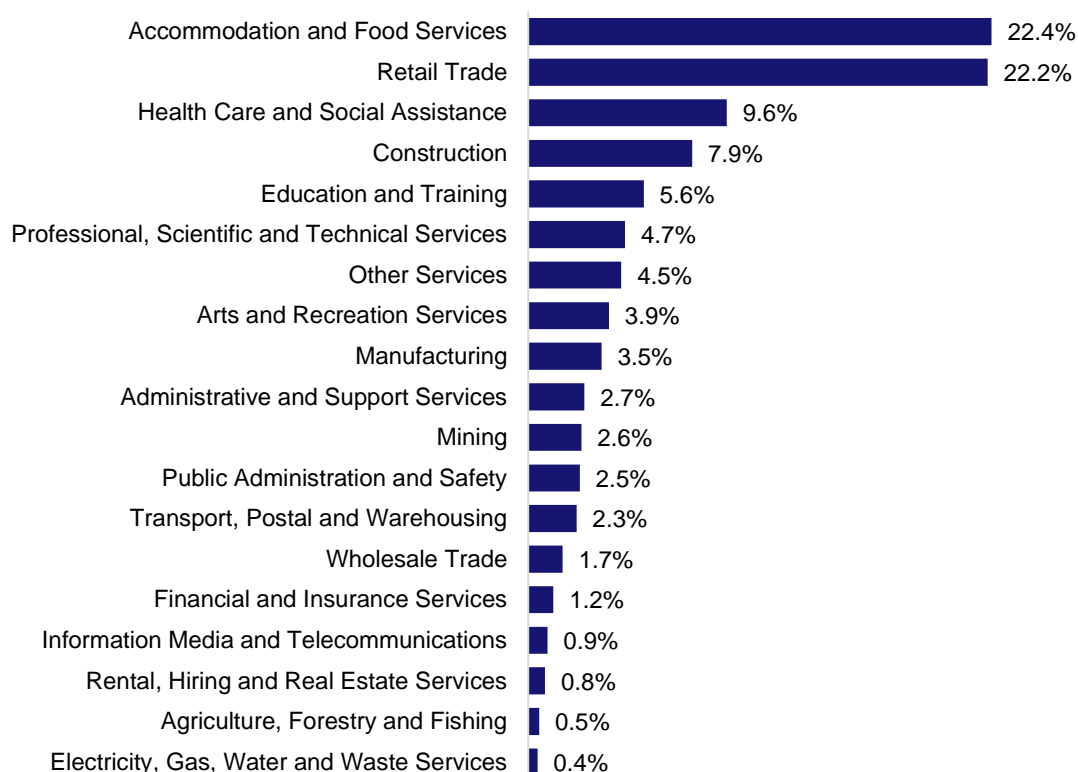
Number employed (Feb-25):	53,800
1 year employment change:	-12.0%
5 year employment change:	9.0%
10 year employment change:	2.3%
Youth share of employment:	22.2%
Mature age share of employment:	7.3%

Source: ABS Labour Force Survey, Detailed, four quarter averages, February 2025, except youth and mature age data which are from the ABS Census of Population and Housing, 2021.

Notes: In each chart, the solid line is the level of employment and the dotted line is a simple linear trend line for the 10 year period. Given the volatility of the underlying data, employment estimates should be treated with a high degree of caution. Particular focus should be placed on the employment series over time to ascertain more reliable long-term growth trends.

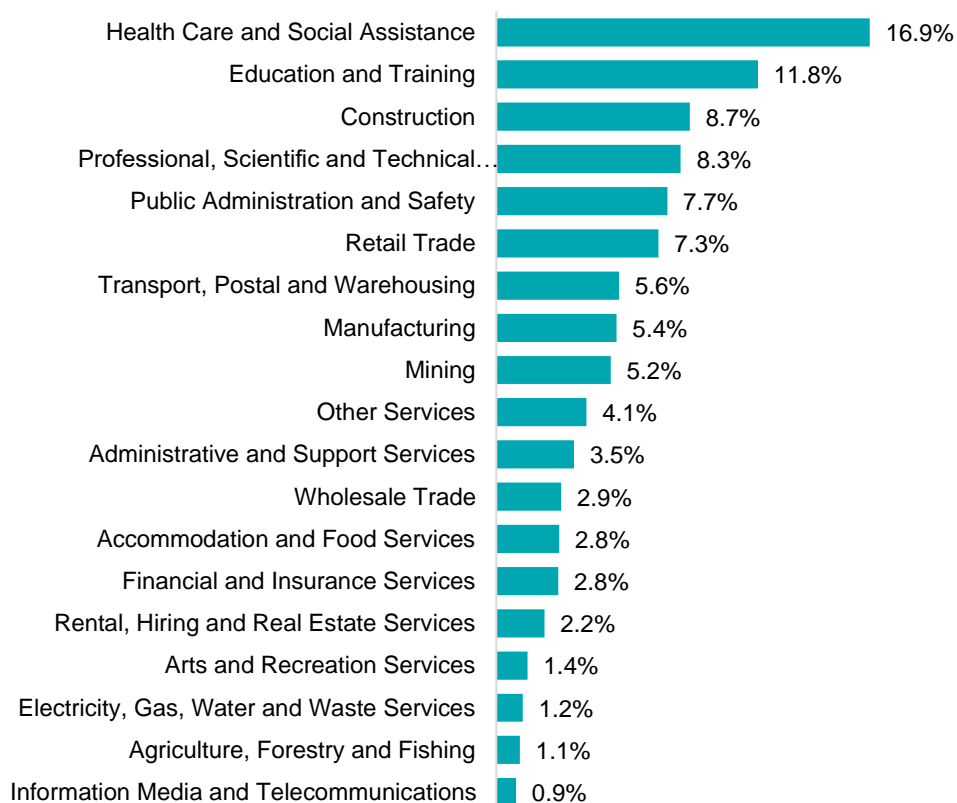
Employment characteristics by Industry

Which industries are youth (aged 15-24) employed in?



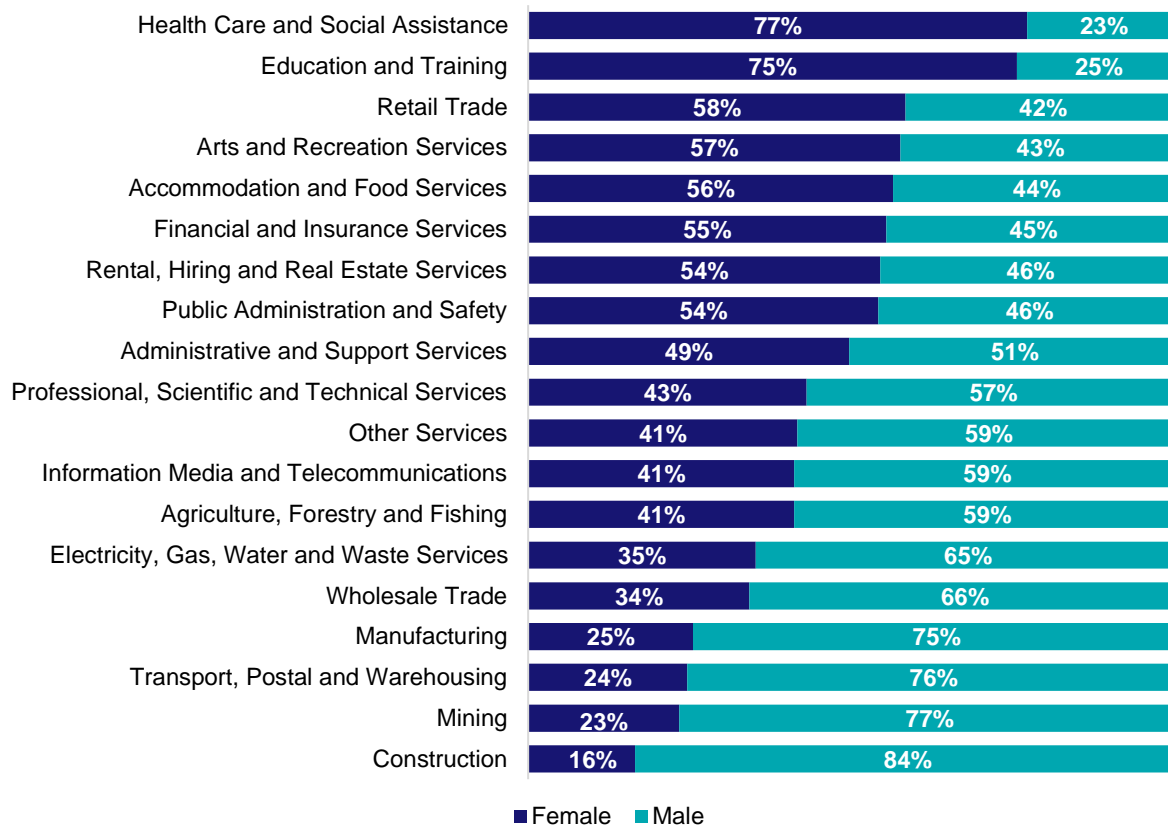
Source: ABS Census of Population and Housing, 2021.

Which industries are mature age persons (aged 55+) employed in?



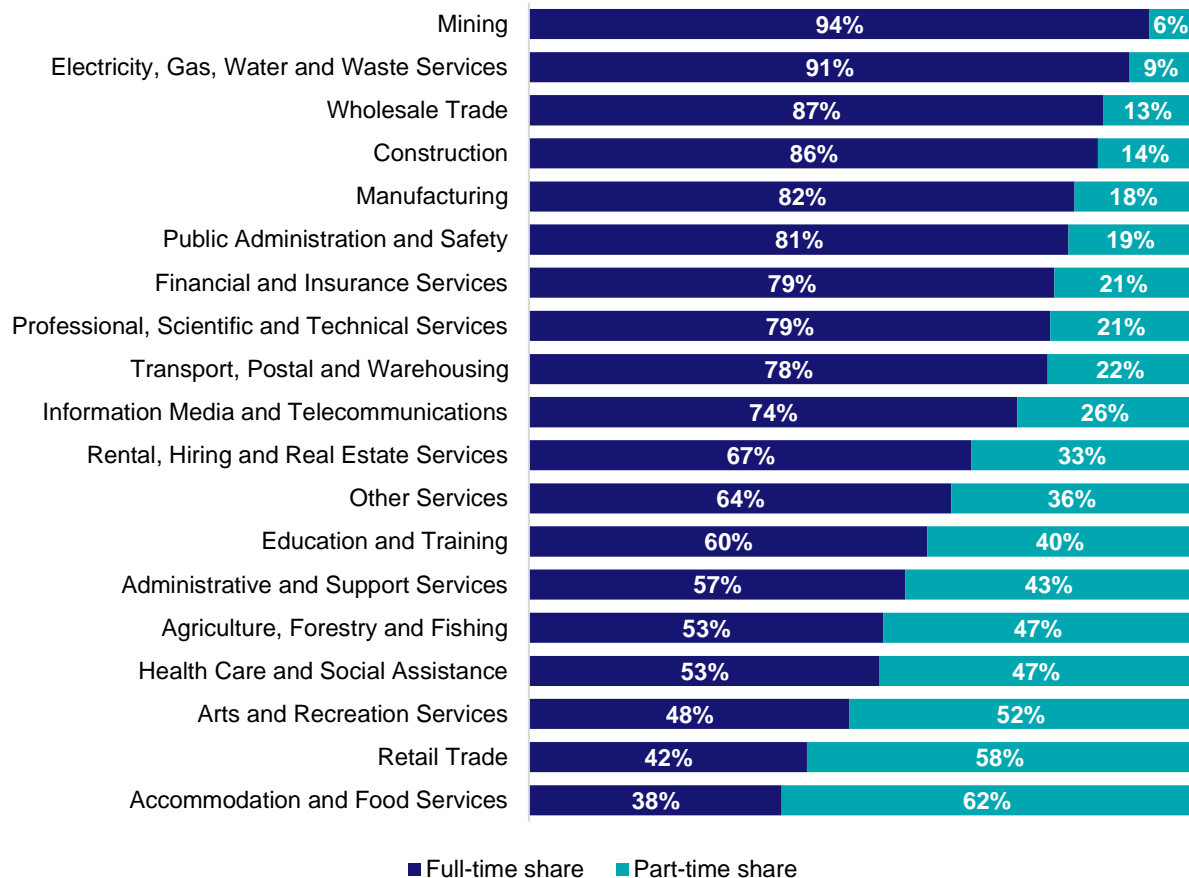
Source: ABS Census of Population and Housing, 2021. Note: SA2 level Census data have been aggregated to the Employment Region level.

Gender share by industry



Source: ABS Labour Force Survey, Detailed, four quarter averages, February 2025.

Full-time and part-time employment status by industry



Source: ABS Labour Force Survey, Detailed, four quarter averages, February 2025.

Appendix

Employment by industry, Perth - North, February 2025

Industry (in order of size)	Share of employment in the region Feb-25 (%)	Employed ('000)			Full-time share %	Part-time share %	Median age *
		Feb-25	Feb-24	Feb-20			
Health Care and Social Assistance	14.6	96.5	98.3	70.1	53.0	47.0	41
Professional, Scientific and Technical Services	10.5	69.7	64.8	60.3	78.7	21.3	41
Construction	9.4	62.6	62.9	53.3	85.9	14.1	39
Mining	8.9	58.7	56.2	41.2	93.7	6.3	40
Retail Trade	8.1	53.8	61.1	49.3	42.0	58.0	32
Education and Training	7.9	52.4	48.9	45.2	60.1	39.9	45
Accommodation and Food Services	6.6	43.4	37.1	37.7	38.2	61.8	25
Public Administration and Safety	6.3	41.6	33.8	37.0	81.5	18.5	44
Manufacturing	4.2	27.9	27.4	32.1	82.4	17.6	43
Transport, Postal and Warehousing	4.2	27.7	28.2	20.9	78.3	21.7	44
Other Services	4.1	27.1	26.8	22.6	63.8	36.2	38
Administrative and Support Services	3.6	23.7	21.2	21.3	56.8	43.2	40
Financial and Insurance Services	2.8	18.6	19.2	17.4	79.4	20.6	42
Wholesale Trade	2.2	14.5	16.8	17.7	86.7	13.3	43
Arts and Recreation Services	1.9	12.7	11.6	11.9	48.4	51.6	32
Electricity, Gas, Water and Waste Services	1.7	11.2	6.5	7.8	90.7	9.3	43
Rental, Hiring and Real Estate Services	1.5	10.1	9.1	9.6	66.8	33.2	43
Information Media and Telecommunications	1.1	7.2	6.9	4.7	73.7	26.3	38
Agriculture, Forestry and Fishing	0.5	3.0	3.8	4.6	53.5	46.5	44
All industries	100.0	662.3	640.6	564.7	68.2	31.8	40

Source: ABS Labour Force Survey, Detailed, four quarter averages, February 2025. *Median age is from the ABS Census of Population and Housing, 2021. Median age has been derived using aggregated SA2s for the Employment Region.

Note: Small cells should be viewed with caution due to small sample sizes and regional volatility.

Employment Region Industry profile

Perth - South Employment Region

Release date: 27 March 2025

Overview

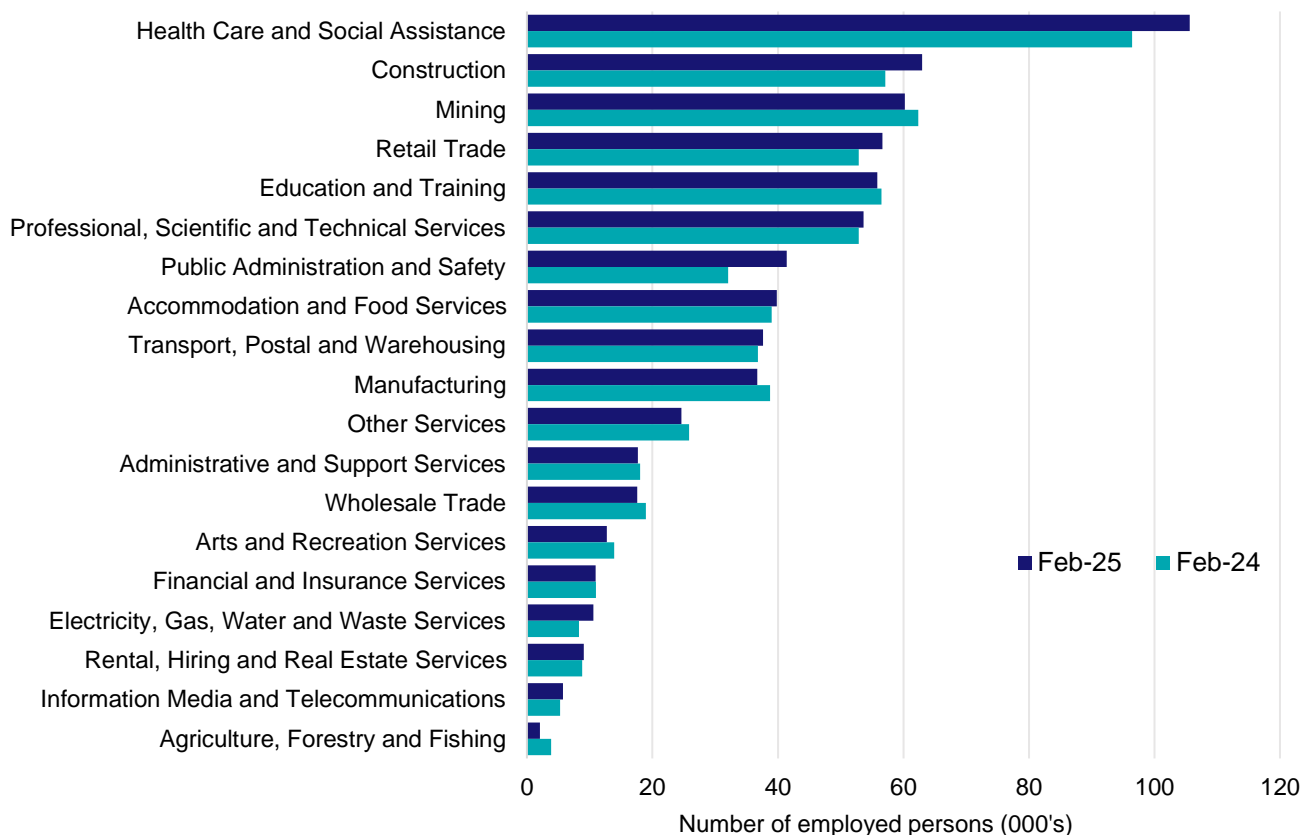
In February 2025, there were around 661,500 people employed in the Perth - South Employment Region. The 5 largest employing industries in the region were Health Care and Social Assistance, Construction, Mining, Retail Trade, and Education and Training. Together these 5 industries accounted for 52% of employment in the region.

Over the year to February 2025, employment in:

- Health Care and Social Assistance rose by 9.5% to stand at 105,600
- Construction rose by 10.3% to stand at 63,000
- Mining fell by 3.5% to stand at 60,200.

In Health Care and Social Assistance in the Perth - South Employment Region, 52% of workers were employed full-time; 76% were female; and the median age of the workforce was 41.

Employment by industry, February 2025 and February 2024



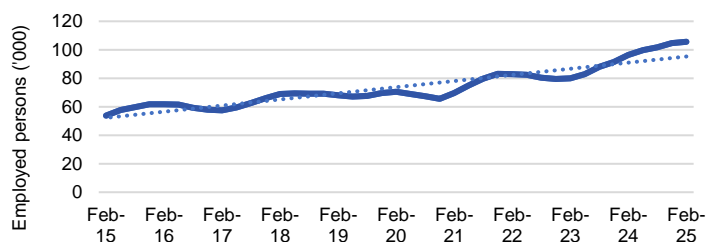
Source: ABS Labour Force Survey*, Detailed, four quarter averages, February 2025. Note that total employment for the region (four quarter averaged data) will not match data published in the Employment Region Labour Market dashboards (modelled estimates).

*ABS Labour Force Survey data are based on the combined SA4s of Mandurah; Perth - South East; and Perth - South West.

Notes: Data are the latest available. A high degree of caution should be exercised when interpreting data at the regional level, particularly in regards to percentage changes, given the volatility of the underlying data. For any enquiries related to the data in this report, please contact RegionalWorkforceAssessment@jobsandskills.gov.au

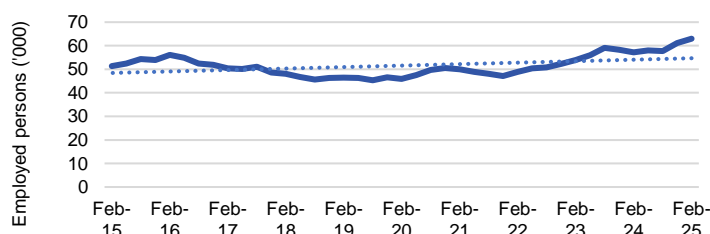
Five largest employing industries: key statistics

Health Care and Social Assistance



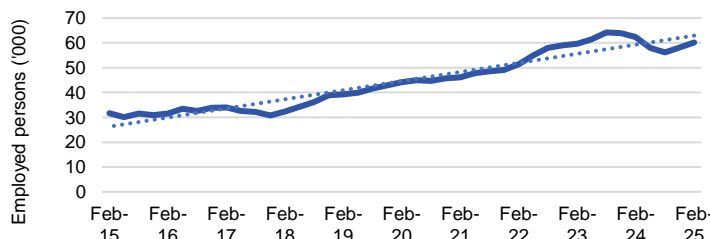
Number employed (Feb-25):	105,600
1 year employment change:	9.5%
5 year employment change:	49.9%
10 year employment change:	96.4%
Youth share of employment:	9.8%
Mature age share of employment:	16.1%

Construction



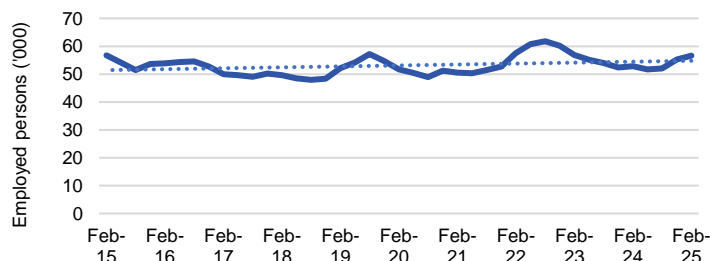
Number employed (Feb-25):	63,000
1 year employment change:	10.3%
5 year employment change:	37.0%
10 year employment change:	22.6%
Youth share of employment:	7.3%
Mature age share of employment:	8.5%

Mining



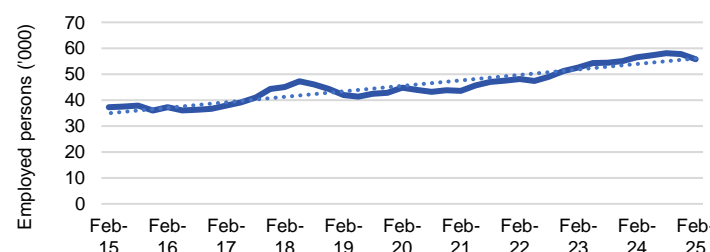
Number employed (Feb-25):	60,200
1 year employment change:	-3.5%
5 year employment change:	36.1%
10 year employment change:	89.7%
Youth share of employment:	3.0%
Mature age share of employment:	6.1%

Retail Trade



Number employed (Feb-25):	56,700
1 year employment change:	7.2%
5 year employment change:	9.5%
10 year employment change:	-0.1%
Youth share of employment:	20.7%
Mature age share of employment:	7.4%

Education and Training



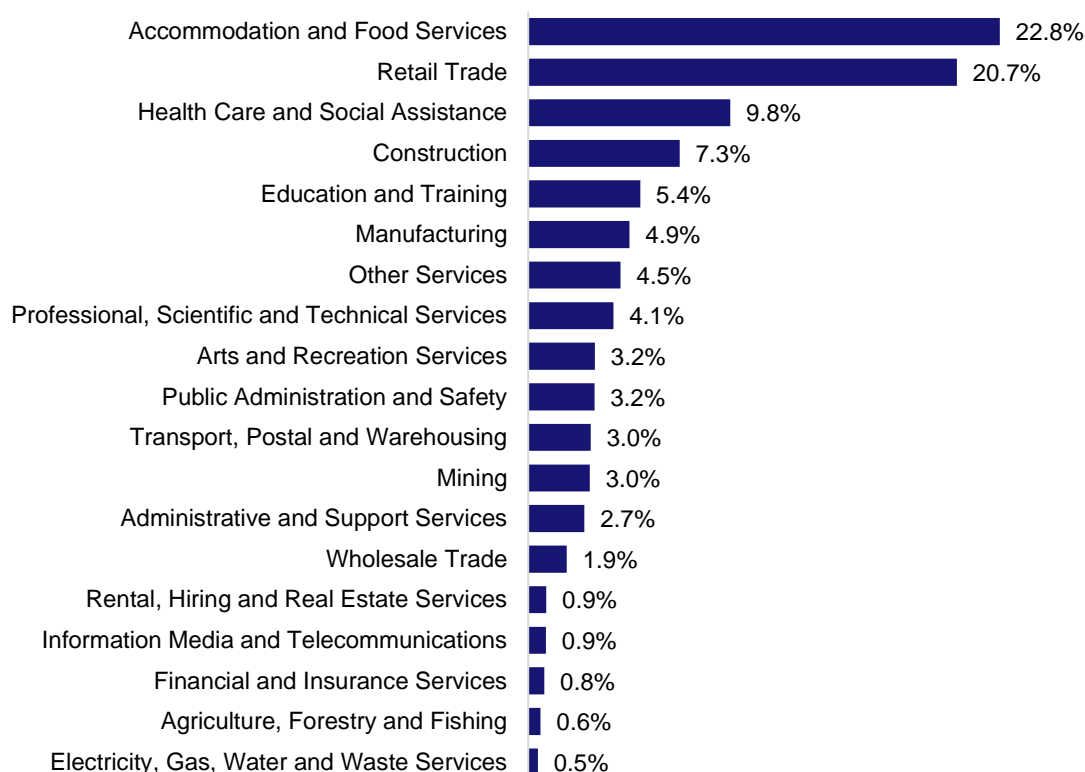
Number employed (Feb-25):	55,800
1 year employment change:	-1.2%
5 year employment change:	24.5%
10 year employment change:	49.6%
Youth share of employment:	5.4%
Mature age share of employment:	11.6%

Source: ABS Labour Force Survey, Detailed, four quarter averages, February 2025, except youth and mature age data which are from the ABS Census of Population and Housing, 2021.

Notes: In each chart, the solid line is the level of employment and the dotted line is a simple linear trend line for the 10 year period. Given the volatility of the underlying data, employment estimates should be treated with a high degree of caution. Particular focus should be placed on the employment series over time to ascertain more reliable long-term growth trends.

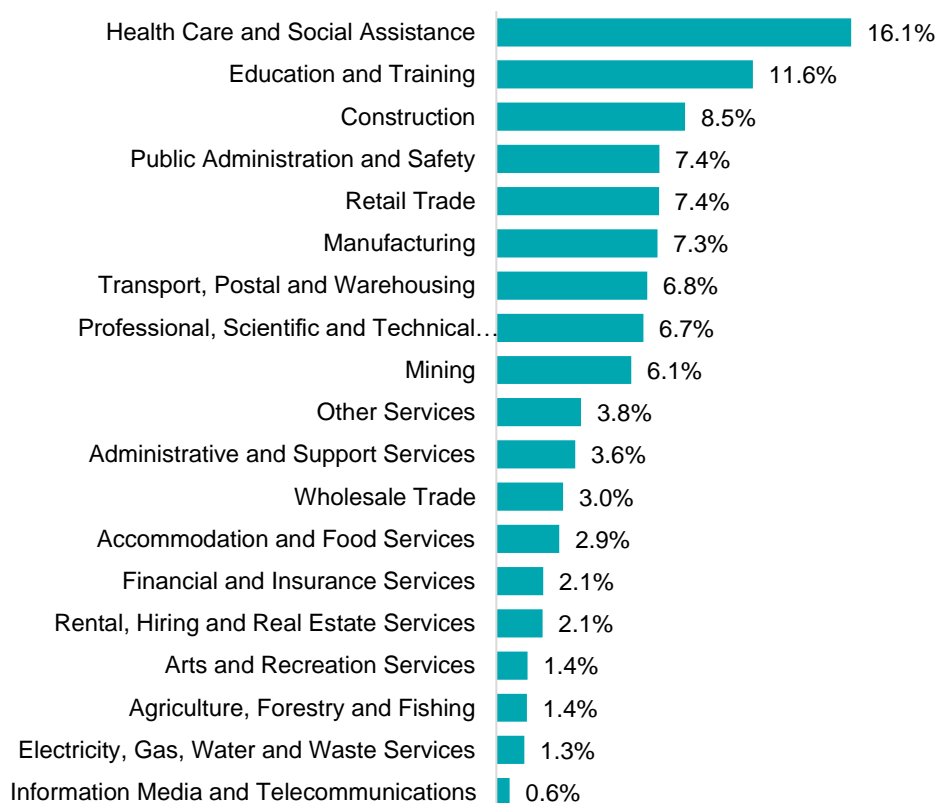
Employment characteristics by Industry

Which industries are youth (aged 15-24) employed in?



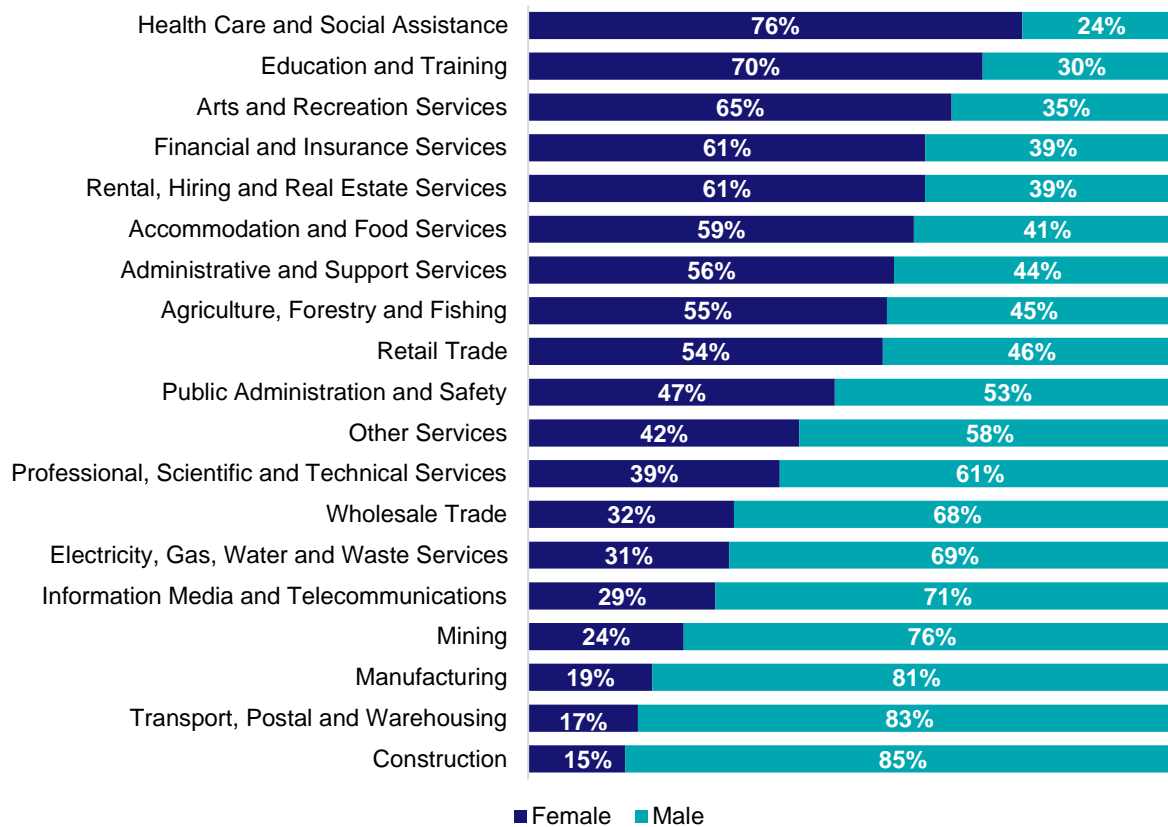
Source: ABS Census of Population and Housing, 2021.

Which industries are mature age persons (aged 55+) employed in?



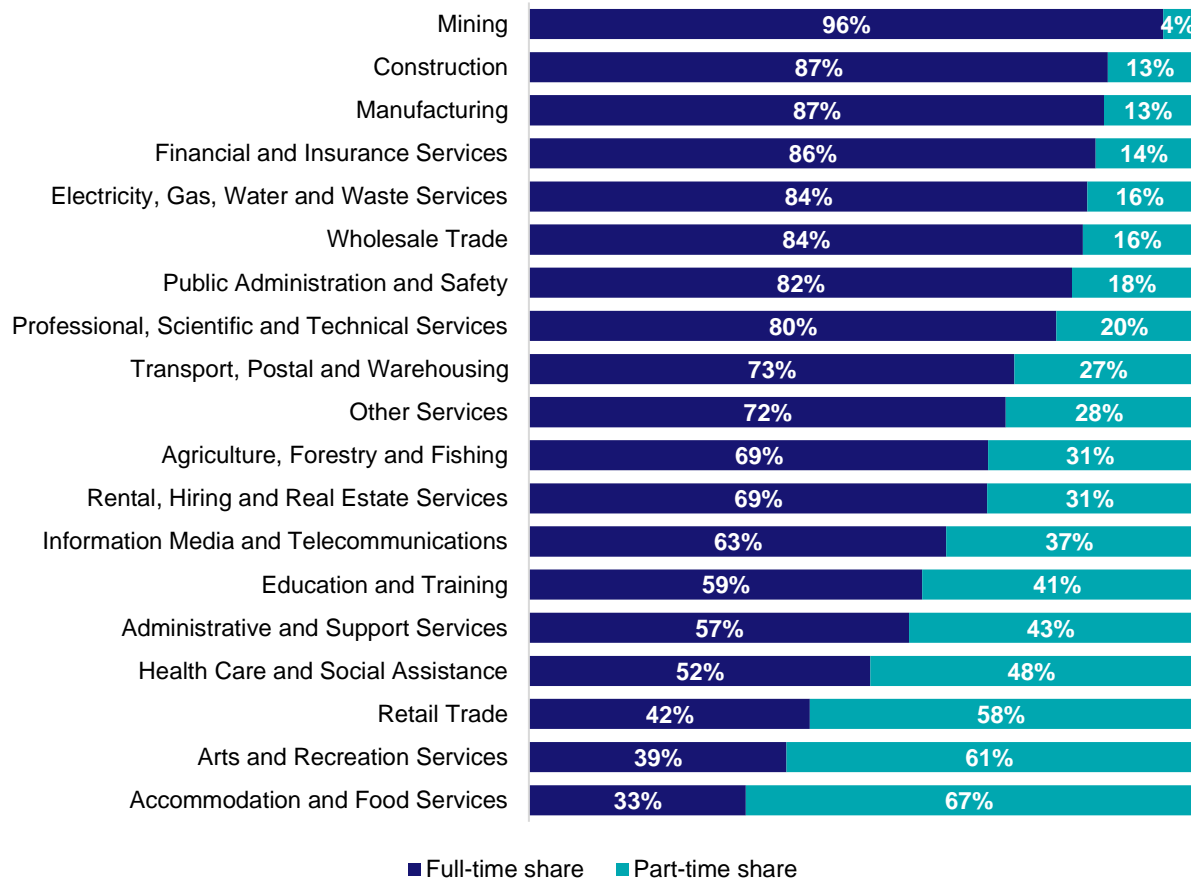
Source: ABS Census of Population and Housing, 2021. Note: SA2 level Census data have been aggregated to the Employment Region level.

Gender share by industry



Source: ABS Labour Force Survey, Detailed, four quarter averages, February 2025.

Full-time and part-time employment status by industry



Source: ABS Labour Force Survey, Detailed, four quarter averages, February 2025.

Appendix

Employment by industry, Perth - South, February 2025

Industry (in order of size)	Share of employment in the region Feb-25 (%)	Employed ('000)			Full-time share %	Part-time share %	Median age *
		Feb-25	Feb-24	Feb-20			
Health Care and Social Assistance	16.0	105.6	96.4	70.4	51.6	48.4	41
Construction	9.5	63.0	57.1	46.0	87.4	12.6	40
Mining	9.1	60.2	62.4	44.2	95.8	4.2	41
Retail Trade	8.6	56.7	52.9	51.7	42.4	57.6	32
Education and Training	8.4	55.8	56.5	44.8	59.4	40.6	44
Professional, Scientific and Technical Services	8.1	53.7	52.9	42.3	79.6	20.4	40
Public Administration and Safety	6.3	41.4	32.1	33.0	82.0	18.0	43
Accommodation and Food Services	6.0	39.8	39.0	33.2	32.8	67.2	24
Transport, Postal and Warehousing	5.7	37.6	36.8	33.5	73.3	26.7	43
Manufacturing	5.5	36.7	38.8	35.4	86.8	13.2	42
Other Services	3.7	24.6	25.9	23.9	72.0	28.0	38
Administrative and Support Services	2.7	17.7	18.0	15.1	57.4	42.6	40
Wholesale Trade	2.7	17.6	19.0	17.4	83.6	16.4	42
Arts and Recreation Services	1.9	12.7	13.9	9.6	38.9	61.1	33
Financial and Insurance Services	1.7	11.0	11.0	10.6	85.6	14.4	41
Electricity, Gas, Water and Waste Services	1.6	10.6	8.3	7.2	84.3	15.7	42
Rental, Hiring and Real Estate Services	1.4	9.1	8.8	10.2	69.2	30.8	44
Information Media and Telecommunications	0.9	5.8	5.3	5.9	63.0	37.0	36
Agriculture, Forestry and Fishing	0.3	2.1	3.9	4.3	69.3	30.7	47
All industries	100.0	661.5	638.8	538.6	68.1	31.9	40

Source: ABS Labour Force Survey, Detailed, four quarter averages, February 2025. *Median age is from the ABS Census of Population and Housing, 2021. Median age has been derived using aggregated SA2s for the Employment Region.

Note: Small cells should be viewed with caution due to small sample sizes and regional volatility.



Employment Region Industry profile

South West WA Employment Region

Release date: 27 March 2025

Overview

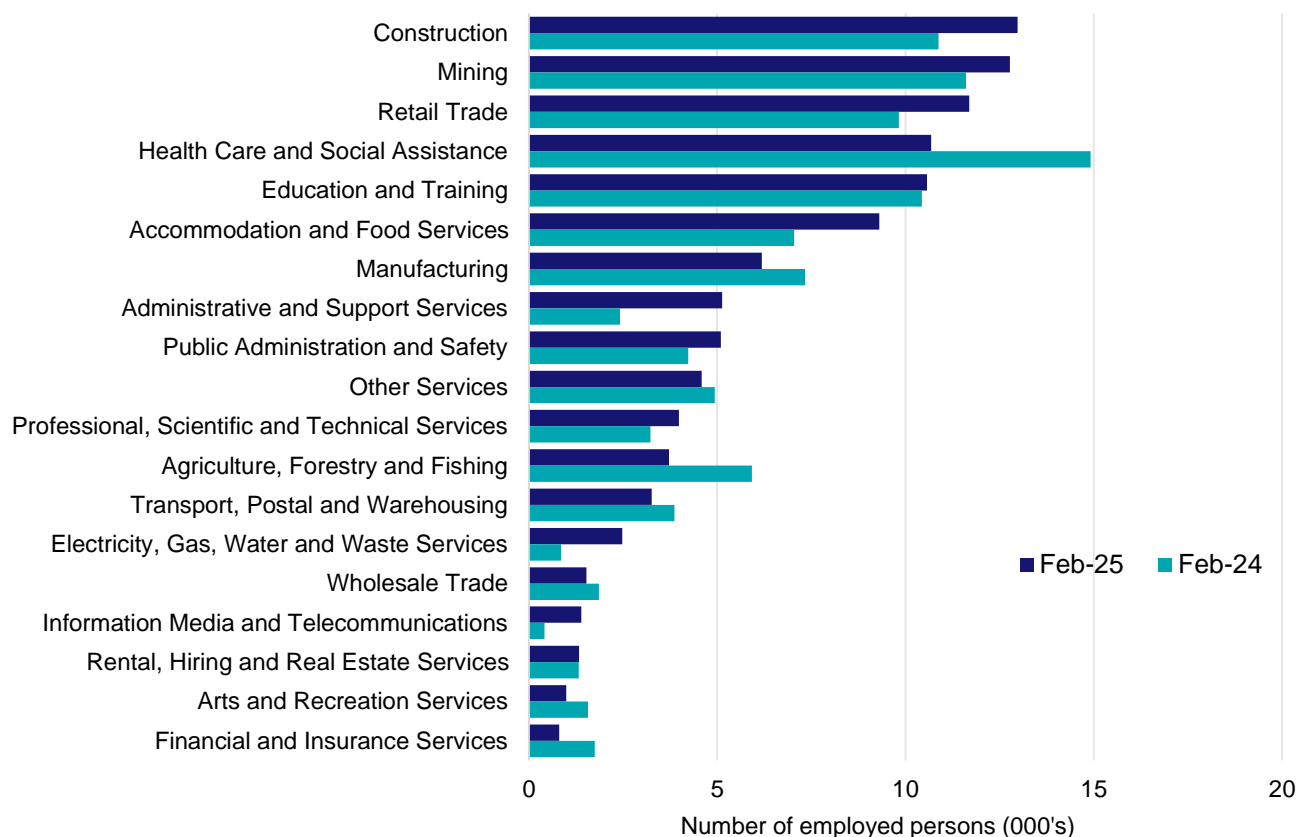
In February 2025, there were around 108,500 people employed in the South West WA Employment Region. The 5 largest employing industries in the region were Construction, Mining, Retail Trade, Health Care and Social Assistance, and Education and Training. Together these 5 industries accounted for 54% of employment in the region.

Over the year to February 2025, employment in:

- Construction rose by 19.3% to stand at 13,000
- Mining rose by 10.0% to stand at 12,800
- Retail Trade rose by 19.0% to stand at 11,700.

In Construction in the South West WA Employment Region, 82% of workers were employed full-time; 77% were male; and the median age of the workforce was 42.

Employment by industry, February 2025 and February 2024



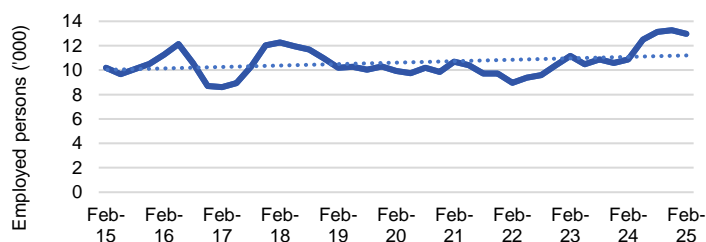
Source: ABS Labour Force Survey*, Detailed, four quarter averages, February 2025. Note that total employment for the region (four quarter averaged data) will not match data published in the Employment Region Labour Market dashboards (modelled estimates).

*ABS Labour Force Survey data are based on the Bunbury SA4.

Notes: Data are the latest available. A high degree of caution should be exercised when interpreting data at the regional level, particularly in regards to percentage changes, given the volatility of the underlying data. For any enquiries related to the data in this report, please contact RegionalWorkforceAssessment@jobsandskills.gov.au

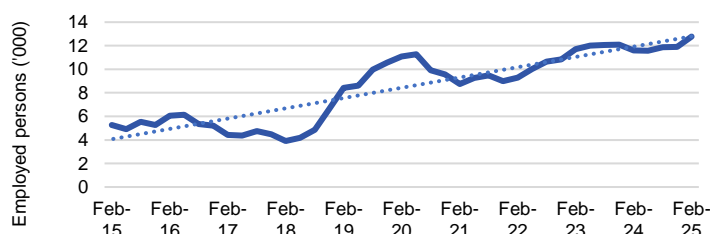
Five largest employing industries: key statistics

Construction



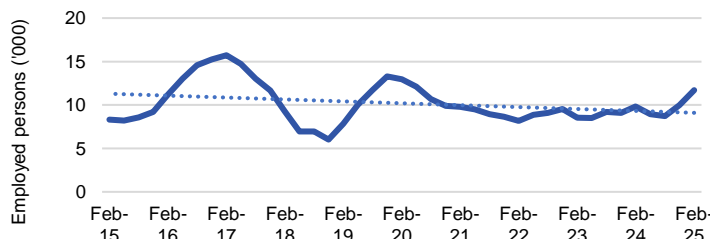
Number employed (Feb-25):	13,000
1 year employment change:	19.3%
5 year employment change:	30.8%
10 year employment change:	27.4%
Youth share of employment:	10.9%
Mature age share of employment:	9.6%

Mining



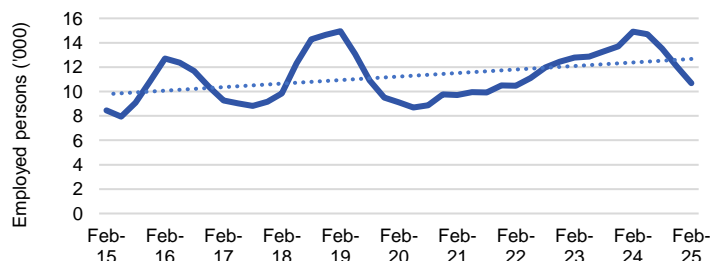
Number employed (Feb-25):	12,800
1 year employment change:	10.0%
5 year employment change:	15.3%
10 year employment change:	142.9%
Youth share of employment:	4.0%
Mature age share of employment:	6.4%

Retail Trade



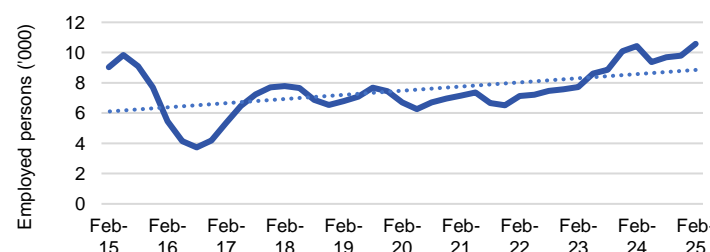
Number employed (Feb-25):	11,700
1 year employment change:	19.0%
5 year employment change:	-9.7%
10 year employment change:	40.9%
Youth share of employment:	19.3%
Mature age share of employment:	8.2%

Health Care and Social Assistance



Number employed (Feb-25):	10,700
1 year employment change:	-28.3%
5 year employment change:	17.4%
10 year employment change:	26.6%
Youth share of employment:	7.8%
Mature age share of employment:	14.5%

Education and Training



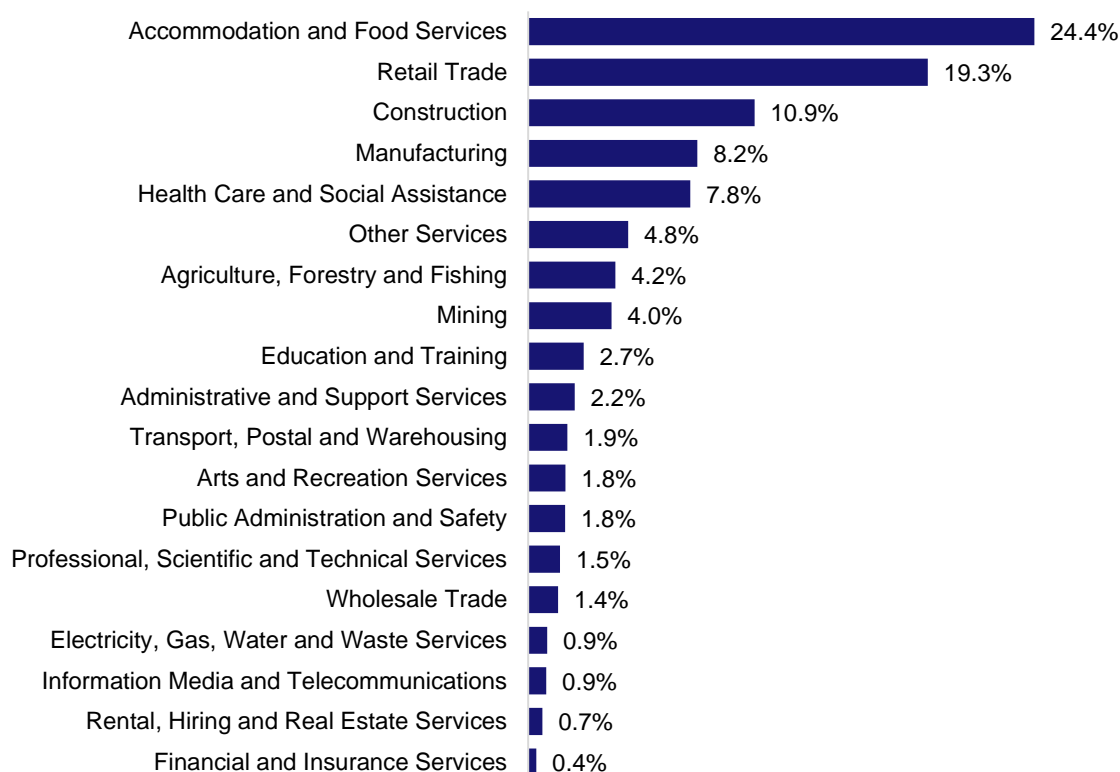
Number employed (Feb-25):	10,600
1 year employment change:	1.4%
5 year employment change:	57.9%
10 year employment change:	17.0%
Youth share of employment:	2.7%
Mature age share of employment:	10.1%

Source: ABS Labour Force Survey, Detailed, four quarter averages, February 2025, except youth and mature age data which are from the ABS Census of Population and Housing, 2021.

Notes: In each chart, the solid line is the level of employment and the dotted line is a simple linear trend line for the 10 year period. Given the volatility of the underlying data, employment estimates should be treated with a high degree of caution. Particular focus should be placed on the employment series over time to ascertain more reliable long-term growth trends.

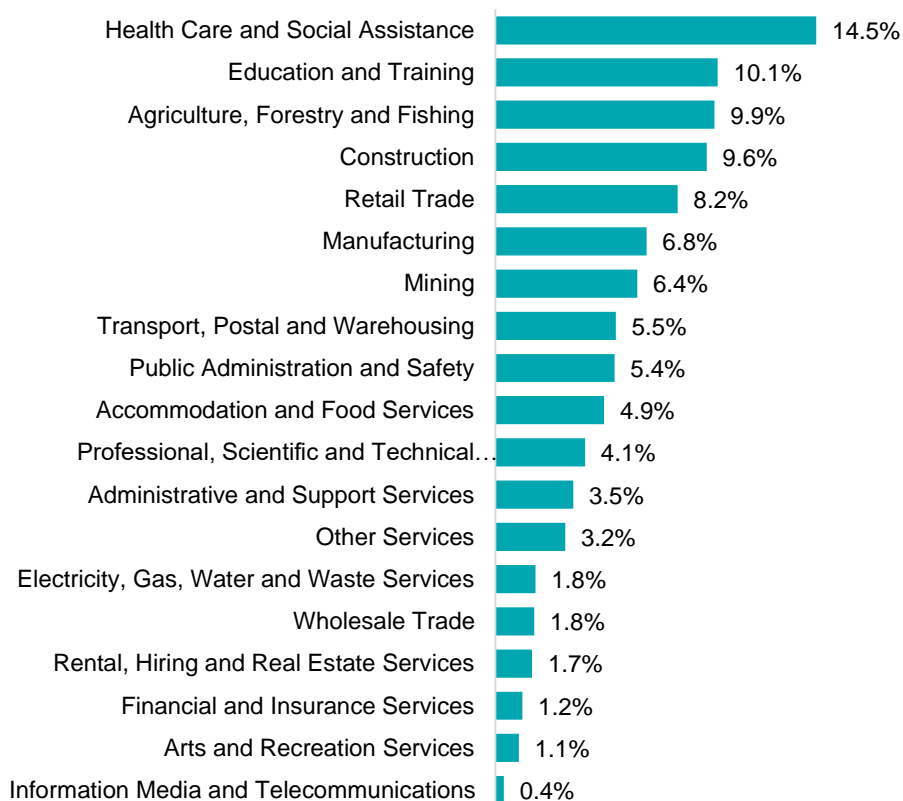
Employment characteristics by Industry

Which industries are youth (aged 15-24) employed in?



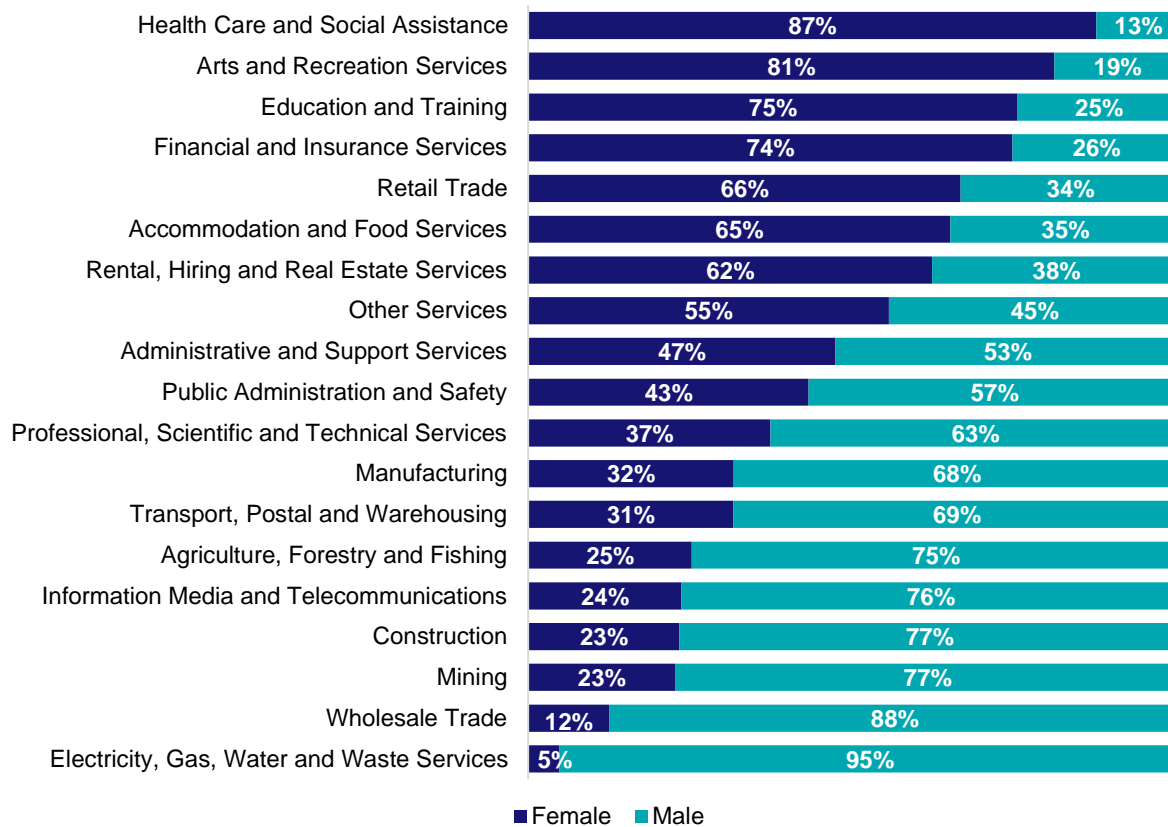
Source: ABS Census of Population and Housing, 2021.

Which industries are mature age persons (aged 55+) employed in?



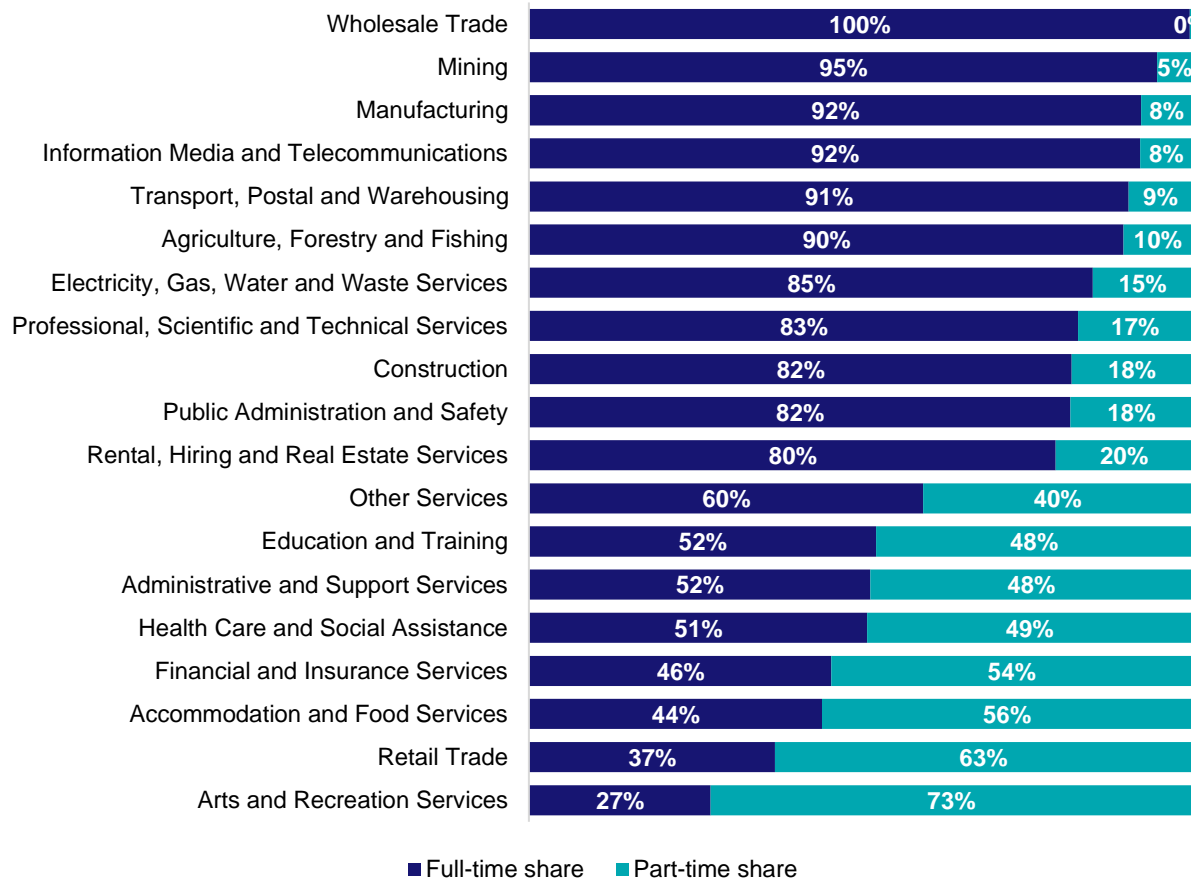
Source: ABS Census of Population and Housing, 2021. Note: SA2 level Census data have been aggregated to the Employment Region level.

Gender share by industry



Source: ABS Labour Force Survey, Detailed, four quarter averages, February 2025.

Full-time and part-time employment status by industry



Source: ABS Labour Force Survey, Detailed, four quarter averages, February 2025.

Appendix

Employment by industry, South West WA, February 2025

Industry (in order of size)	Share of employment in the region Feb-25 (%)	Employed ('000)			Full-time share %	Part-time share %	Median age *
		Feb-25	Feb-24	Feb-20			
Construction	12.0	13.0	10.9	9.9	81.9	18.1	42
Mining	11.8	12.8	11.6	11.1	94.9	5.1	43
Retail Trade	10.8	11.7	9.8	12.9	37.1	62.9	39
Health Care and Social Assistance	9.8	10.7	14.9	9.1	51.1	48.9	46
Education and Training	9.7	10.6	10.4	6.7	52.4	47.6	48
Accommodation and Food Services	8.6	9.3	7.0	7.6	44.2	55.8	31
Manufacturing	5.7	6.2	7.3	7.1	92.4	7.6	41
Administrative and Support Services	4.7	5.1	2.4	2.9	51.5	48.5	45
Public Administration and Safety	4.7	5.1	4.2	3.7	81.8	18.2	48
Other Services	4.2	4.6	4.9	3.4	59.5	40.5	40
Professional, Scientific and Technical Services	3.7	4.0	3.2	4.3	82.9	17.1	46
Agriculture, Forestry and Fishing	3.4	3.7	5.9	6.1	89.8	10.2	50
Transport, Postal and Warehousing	3.0	3.3	3.9	3.7	90.5	9.5	51
Electricity, Gas, Water and Waste Services	2.3	2.5	0.9	1.2	85.2	14.8	46
Wholesale Trade	1.4	1.5	1.9	2.8	99.8	0.2	46
Information Media and Telecommunications	1.3	1.4	0.4	0.4	92.3	7.7	37
Rental, Hiring and Real Estate Services	1.2	1.3	1.3	1.3	79.6	20.4	48
Arts and Recreation Services	0.9	1.0	1.6	1.0	27.4	72.6	37
Financial and Insurance Services	0.7	0.8	1.8	1.1	45.7	54.3	46
All industries	100.0	108.5	104.4	96.4	67.9	32.1	44

Source: ABS Labour Force Survey, Detailed, four quarter averages, February 2025. *Median age is from the ABS Census of Population and Housing, 2021. Median age has been derived using aggregated SA2s for the Employment Region.

Note: Small cells should be viewed with caution due to small sample sizes and regional volatility.