



Australian Government



Jobs and Skills Australia

Industry profile

South Australia

Release date: 27 March 2025

Overview

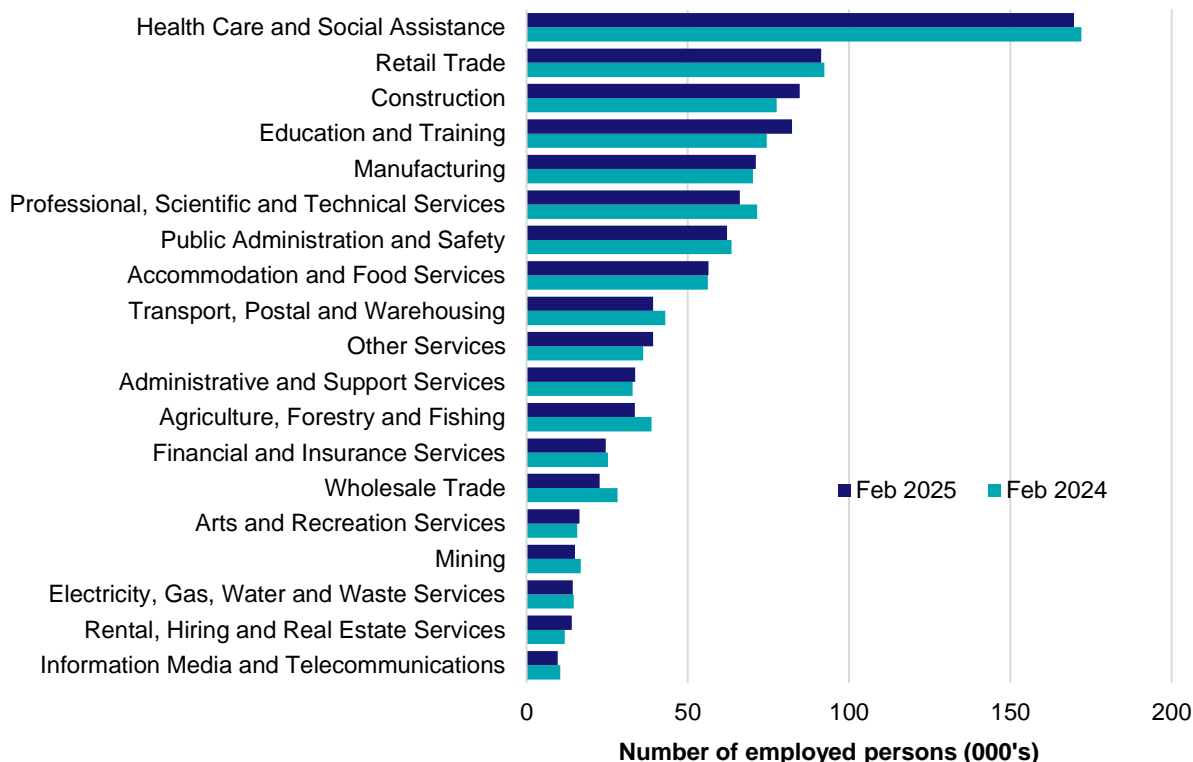
In February 2025, there were around 946,400 people employed in South Australia. The 5 largest employing industries in South Australia were Health Care and Social Assistance, Retail Trade, Construction, Education and Training and Manufacturing. Together these 5 industries accounted for 53% of all employment.

Over the year to February 2025, employment in:

- Health Care and Social Assistance fell by 1.3% to stand at 169,700
- Retail Trade fell by 1.1% to stand at 91,300
- Construction rose by 9.2% to stand at 84,700.

In Health Care and Social Assistance in South Australia, 53% of workers were employed full-time; 75% were Female; and the median age of the workforce was 42. Around 84% of employed persons in this industry were located in Greater Adelaide.

Employment by industry, February 2025 and February 2024

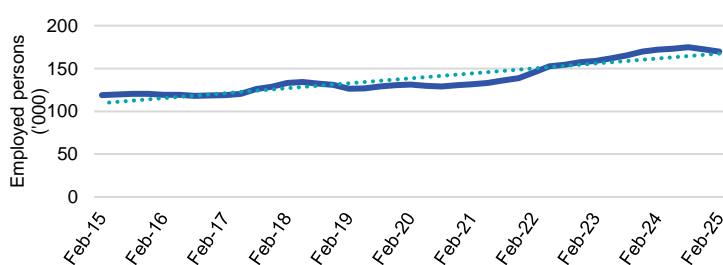


Source: ABS Labour Force Survey, Detailed, four quarter averages, February 2025. Note that total employment (four quarter averaged data) may not match data published in the Labour Market dashboards (6 month averaged data).

Note: For any enquiries related to the data in this report, contact RegionalWorkforceAssessment@jobsandskills.gov.au

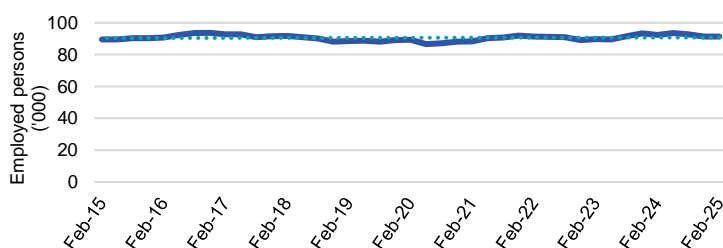
Five largest employing industries: key statistics

Health Care and Social Assistance



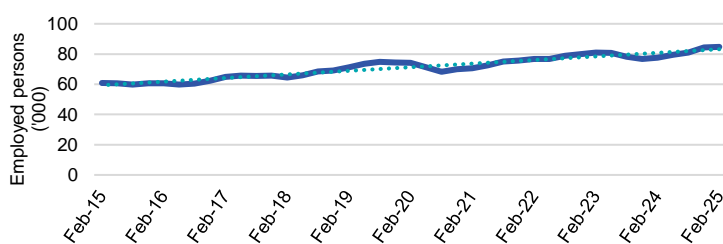
| | |
|---------------------------------|---------|
| Number employed (Feb-25): | 169,700 |
| 1 year employment change: | -1.3% |
| 5 year employment change: | 29.1% |
| 10 year employment change: | 42.6% |
| Youth share of employment: | 10.4% |
| Mature age share of employment: | 18.5% |

Retail Trade



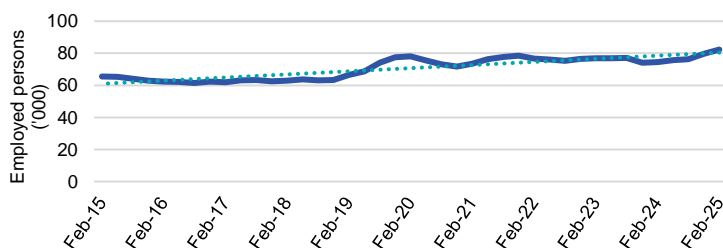
| | |
|---------------------------------|--------|
| Number employed (Feb-25): | 91,300 |
| 1 year employment change: | -1.1% |
| 5 year employment change: | 2.3% |
| 10 year employment change: | 1.9% |
| Youth share of employment: | 22.2% |
| Mature age share of employment: | 7.5% |

Construction



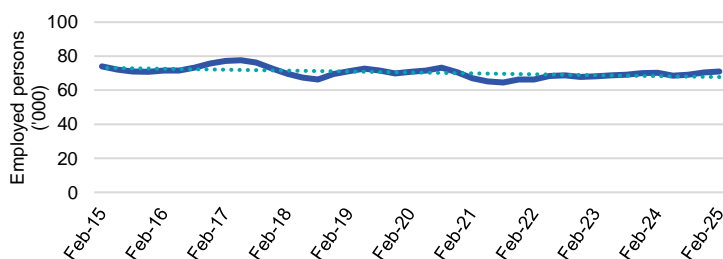
| | |
|---------------------------------|--------|
| Number employed (Feb-25): | 84,700 |
| 1 year employment change: | 9.2% |
| 5 year employment change: | 14.3% |
| 10 year employment change: | 39.4% |
| Youth share of employment: | 8.4% |
| Mature age share of employment: | 7.6% |

Education and Training



| | |
|---------------------------------|--------|
| Number employed (Feb-25): | 82,300 |
| 1 year employment change: | 10.5% |
| 5 year employment change: | 5.4% |
| 10 year employment change: | 25.5% |
| Youth share of employment: | 5.6% |
| Mature age share of employment: | 9.9% |

Manufacturing



| | |
|---------------------------------|--------|
| Number employed (Feb-25): | 71,100 |
| 1 year employment change: | 1.2% |
| 5 year employment change: | 0.3% |
| 10 year employment change: | -4.1% |
| Youth share of employment: | 5.5% |
| Mature age share of employment: | 8.1% |

Source: ABS Labour Force Survey, Detailed, four quarter averages, February 2025, except youth and mature age data which are from the ABS Census of Population and Housing, 2021.

Note: In each chart, the solid line is the level of employment and the dotted line is a simple linear trend line for the 10 year period.

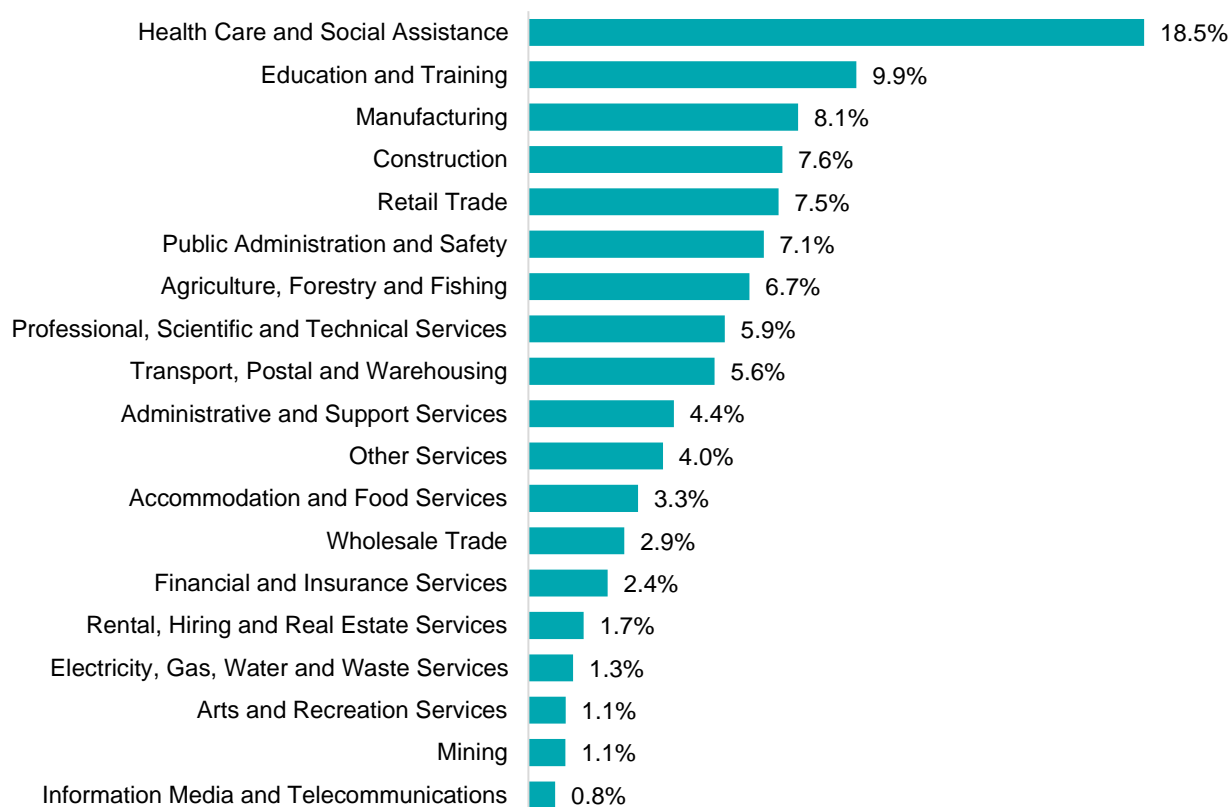
Employment characteristics by Industry

Which industries are youth (aged 15-24) employed in?



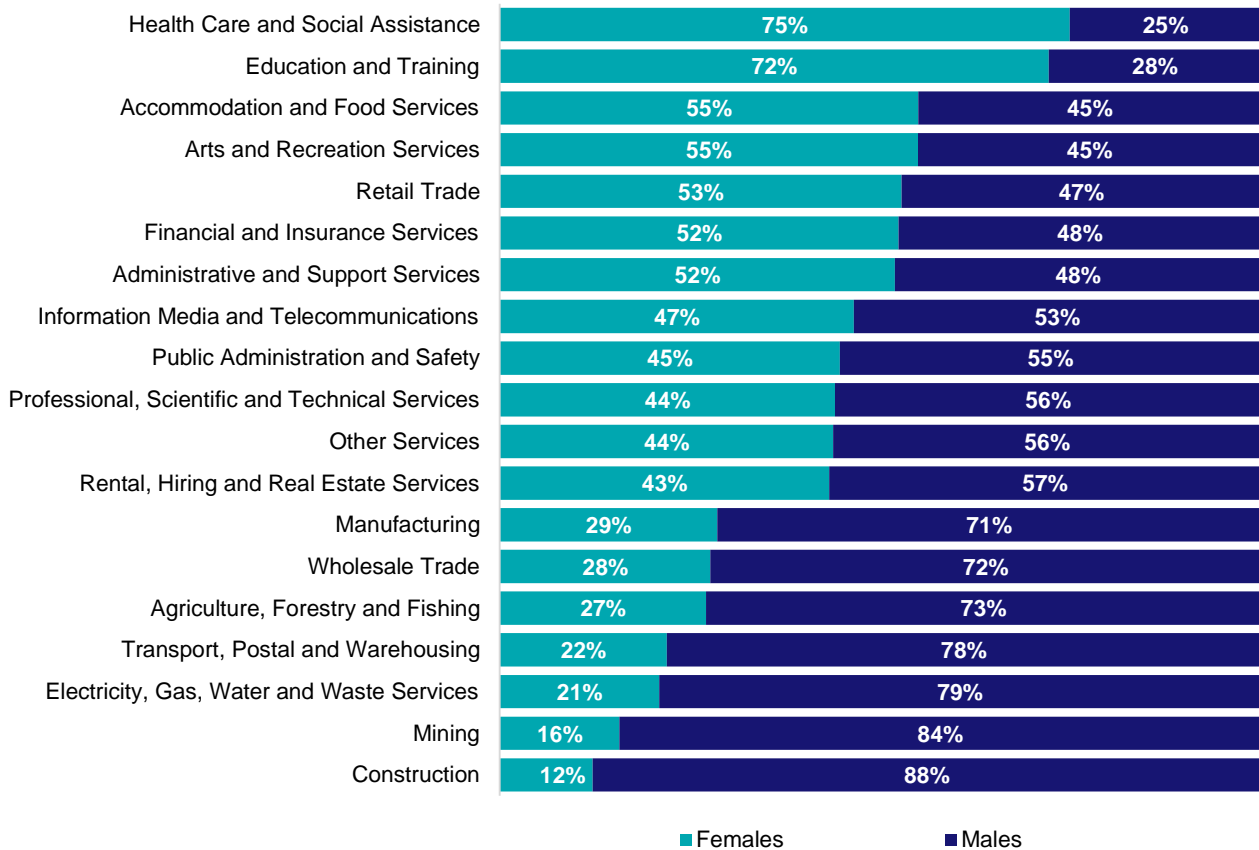
Source: ABS Census of Population and Housing, 2021.

Which industries are mature age persons (aged 55+) employed in?



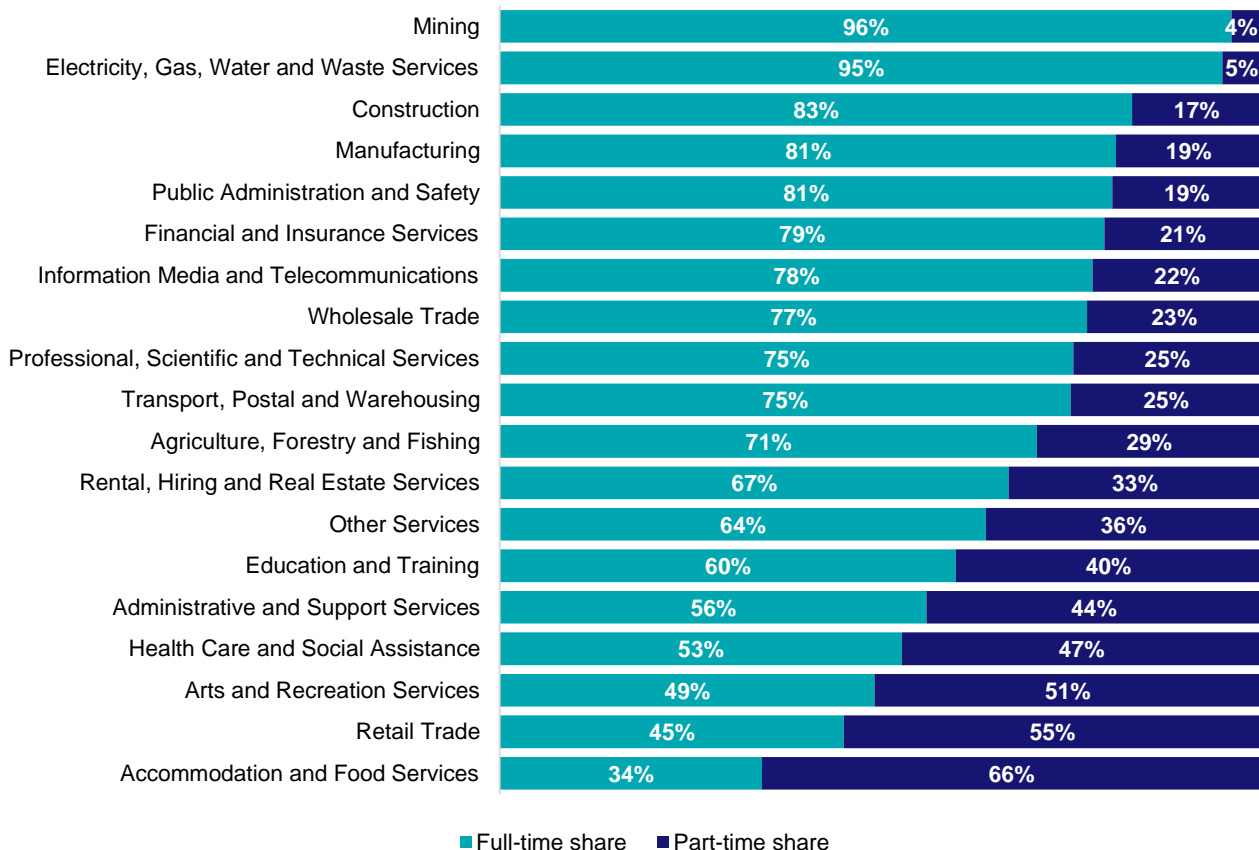
Source: ABS Census of Population and Housing, 2021.

Gender share by industry



Source: ABS Labour Force Survey, Detailed, four quarter averages, February 2025.

Full-time and part-time employment status by industry



Source: ABS Labour Force Survey, Detailed, four quarter averages, February 2025.

Appendix

Employment by industry, South Australia, February 2025

| Industry (in order of size) | Share of emp't Feb-25 (%) | Share of emp't in Greater Adelaide (%) | Share of emp't in Rest of SA (%) | Employed ('000) | | | 1 year change | | 5 year change | | Median age * |
|---|---------------------------|--|----------------------------------|-----------------|--------------|--------------|---------------|-------------|---------------|------------|--------------|
| | | | | Feb-25 | Feb-24 | Feb-20 | ('000) | % | ('000) | % | |
| Health Care and Social Assistance | 17.9 | 84.3 | 15.7 | 169.7 | 172.0 | 131.4 | -2.3 | -1.3 | 38.3 | 29.1 | 42 |
| Retail Trade | 9.7 | 78.8 | 21.2 | 91.3 | 92.3 | 89.3 | -1.0 | -1.1 | 2.0 | 2.3 | 33 |
| Construction | 9.0 | 79.8 | 20.2 | 84.7 | 77.6 | 74.1 | 7.2 | 9.2 | 10.6 | 14.3 | 39 |
| Education and Training | 8.7 | 82.0 | 18.0 | 82.3 | 74.5 | 78.1 | 7.8 | 10.5 | 4.2 | 5.4 | 43 |
| Manufacturing | 7.5 | 78.8 | 21.2 | 71.1 | 70.2 | 70.9 | 0.9 | 1.2 | 0.2 | 0.3 | 44 |
| Professional, Scientific and Technical Services | 7.0 | 94.3 | 5.7 | 66.1 | 71.5 | 59.7 | -5.4 | -7.6 | 6.4 | 10.8 | 41 |
| Public Administration and Safety | 6.6 | 86.5 | 13.5 | 62.2 | 63.5 | 52.0 | -1.3 | -2.1 | 10.1 | 19.5 | 44 |
| Accommodation and Food Services | 6.0 | 81.2 | 18.8 | 56.4 | 56.2 | 62.0 | 0.2 | 0.3 | -5.6 | -9.0 | 26 |
| Transport, Postal and Warehousing | 4.1 | 80.0 | 20.0 | 39.3 | 43.0 | 37.3 | -3.7 | -8.7 | 2.0 | 5.3 | 45 |
| Other Services | 4.1 | 79.4 | 20.6 | 39.2 | 36.1 | 34.8 | 3.1 | 8.6 | 4.4 | 12.7 | 40 |
| Administrative and Support Services | 3.6 | 82.3 | 17.7 | 33.6 | 32.9 | 34.4 | 0.8 | 2.4 | -0.7 | -2.1 | 43 |
| Agriculture, Forestry and Fishing | 3.6 | 16.6 | 83.4 | 33.6 | 38.8 | 31.2 | -5.2 | -13.3 | 2.4 | 7.8 | 48 |
| Financial and Insurance Services | 2.6 | 92.5 | 7.5 | 24.6 | 25.3 | 19.4 | -0.7 | -2.8 | 5.2 | 26.6 | 42 |
| Wholesale Trade | 2.4 | 84.1 | 15.9 | 22.7 | 28.3 | 25.6 | -5.5 | -19.6 | -2.9 | -11.4 | 45 |
| Arts and Recreation Services | 1.7 | 83.9 | 16.1 | 16.4 | 15.7 | 12.0 | 0.7 | 4.4 | 4.4 | 37.1 | 35 |
| Mining | 1.6 | 52.1 | 47.9 | 15.0 | 16.8 | 11.8 | -1.8 | -10.7 | 3.2 | 27.4 | 41 |
| Electricity, Gas, Water and Waste Services | 1.5 | 81.6 | 18.4 | 14.4 | 14.6 | 13.0 | -0.3 | -1.8 | 1.4 | 10.9 | 43 |
| Rental, Hiring and Real Estate Services | 1.5 | 85.5 | 14.5 | 14.1 | 11.8 | 10.9 | 2.3 | 19.1 | 3.2 | 29.0 | 45 |
| Information Media and Telecommunications | 1.0 | 91.6 | 8.4 | 9.7 | 10.4 | 13.8 | -0.8 | -7.4 | -4.1 | -30.0 | 39 |
| All Industries | 100.0 | 80.3 | 19.7 | 946.4 | 951.4 | 861.7 | -5.0 | -0.5 | 84.7 | 9.8 | 41 |

Source: ABS Labour Force Survey, Detailed, February 2025, four quarter averages. *Median age is from the ABS Census of Population and Housing, 2021.

Employment Region Industry profile

Adelaide North Employment Region

Release date: 27 March 2025

Overview

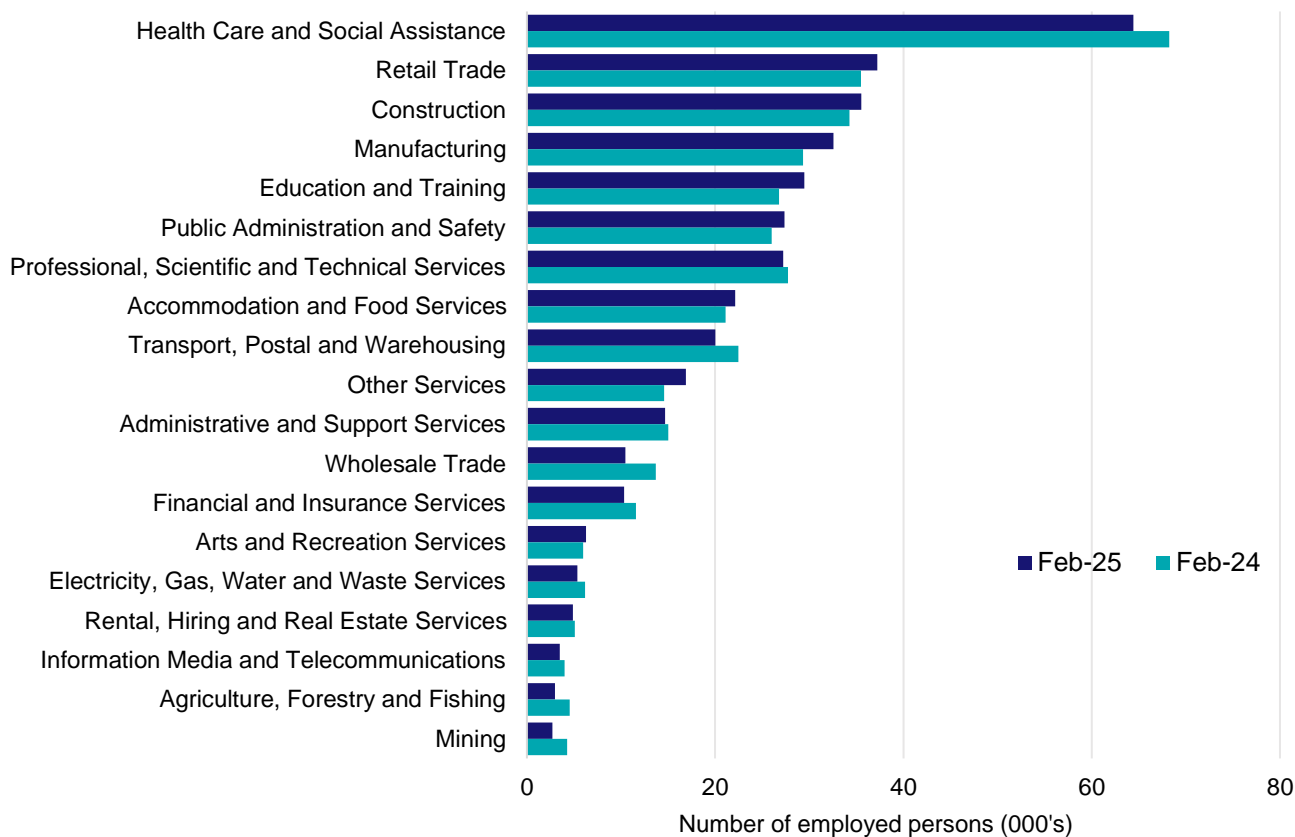
In February 2025, there were around 373,900 people employed in the Adelaide North Employment Region. The 5 largest employing industries in the region were Health Care and Social Assistance, Retail Trade, Construction, Manufacturing, and Education and Training. Together these 5 industries accounted for 53% of employment in the region.

Over the year to February 2025, employment in:

- Health Care and Social Assistance fell by 5.6% to stand at 64,400
- Retail Trade rose by 4.8% to stand at 37,200
- Construction rose by 3.6% to stand at 35,500.

In Health Care and Social Assistance in the Adelaide North Employment Region, 52% of workers were employed full-time; 77% were female; and the median age of the workforce was 40.

Employment by industry, February 2025 and February 2024



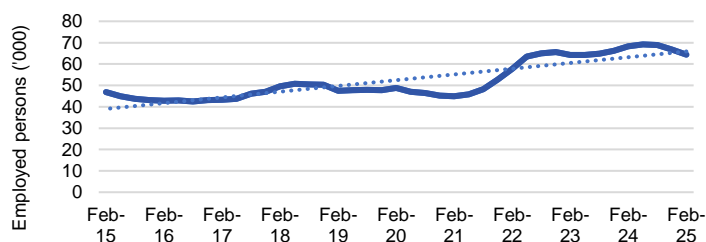
Source: ABS Labour Force Survey*, Detailed, four quarter averages, February 2025. Note that total employment for the region (four quarter averaged data) will not match data published in the Employment Region Labour Market dashboards (modelled estimates).

*ABS Labour Force Survey data are based on the combined SA4s of Adelaide - North; and Adelaide - West.

Notes: Data are the latest available. A high degree of caution should be exercised when interpreting data at the regional level, particularly in regards to percentage changes, given the volatility of the underlying data. For any enquiries related to the data in this report, please contact RegionalWorkforceAssessment@jobsandskills.gov.au

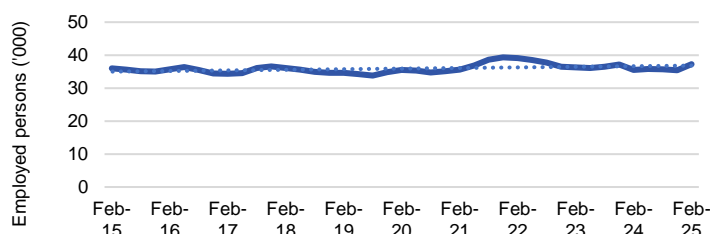
Five largest employing industries: key statistics

Health Care and Social Assistance



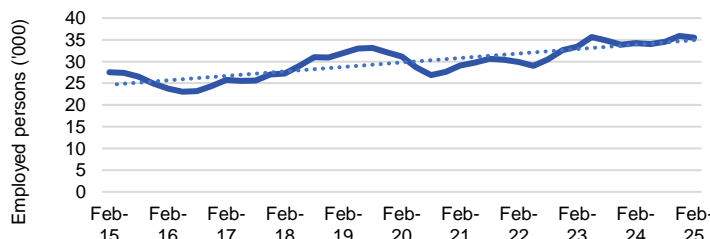
| | |
|---------------------------------|--------|
| Number employed (Feb-25): | 64,400 |
| 1 year employment change: | -5.6% |
| 5 year employment change: | 31.9% |
| 10 year employment change: | 37.7% |
| Youth share of employment: | 10.8% |
| Mature age share of employment: | 18.2% |

Retail Trade



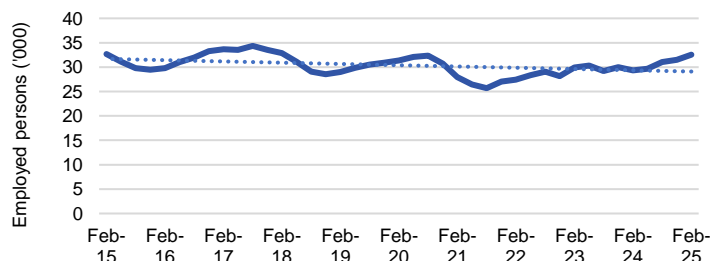
| | |
|---------------------------------|--------|
| Number employed (Feb-25): | 37,200 |
| 1 year employment change: | 4.8% |
| 5 year employment change: | 4.8% |
| 10 year employment change: | 3.5% |
| Youth share of employment: | 22.5% |
| Mature age share of employment: | 8.1% |

Construction



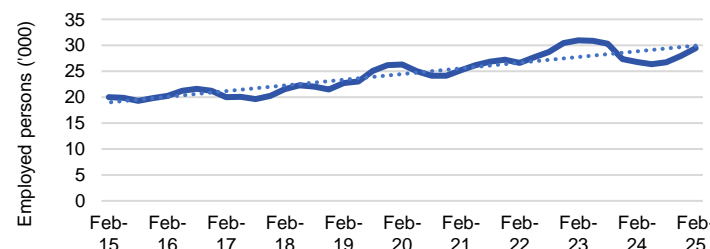
| | |
|---------------------------------|--------|
| Number employed (Feb-25): | 35,500 |
| 1 year employment change: | 3.6% |
| 5 year employment change: | 14.1% |
| 10 year employment change: | 29.1% |
| Youth share of employment: | 8.6% |
| Mature age share of employment: | 8.4% |

Manufacturing



| | |
|---------------------------------|--------|
| Number employed (Feb-25): | 32,600 |
| 1 year employment change: | 11.0% |
| 5 year employment change: | 3.7% |
| 10 year employment change: | -0.3% |
| Youth share of employment: | 5.0% |
| Mature age share of employment: | 9.8% |

Education and Training



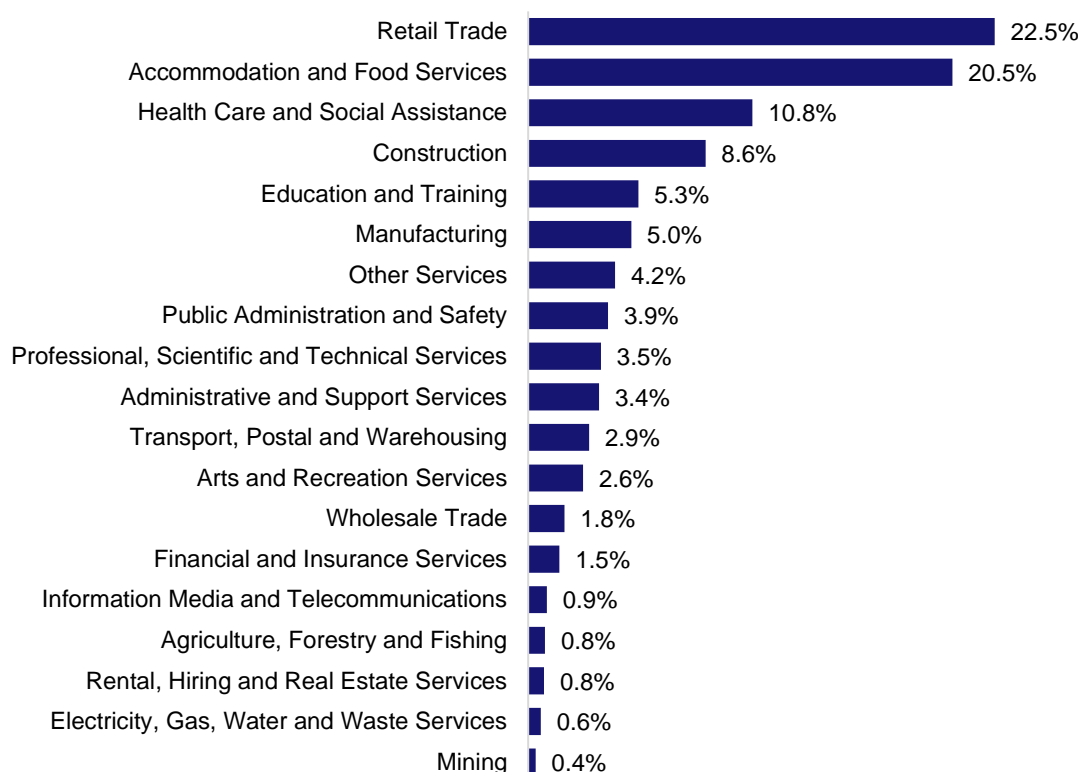
| | |
|---------------------------------|--------|
| Number employed (Feb-25): | 29,500 |
| 1 year employment change: | 10.0% |
| 5 year employment change: | 12.1% |
| 10 year employment change: | 47.4% |
| Youth share of employment: | 5.3% |
| Mature age share of employment: | 9.2% |

Source: ABS Labour Force Survey, Detailed, four quarter averages, February 2025, except youth and mature age data which are from the ABS Census of Population and Housing, 2021.

Notes: In each chart, the solid line is the level of employment and the dotted line is a simple linear trend line for the 10 year period. Given the volatility of the underlying data, employment estimates should be treated with a high degree of caution. Particular focus should be placed on the employment series over time to ascertain more reliable long-term growth trends.

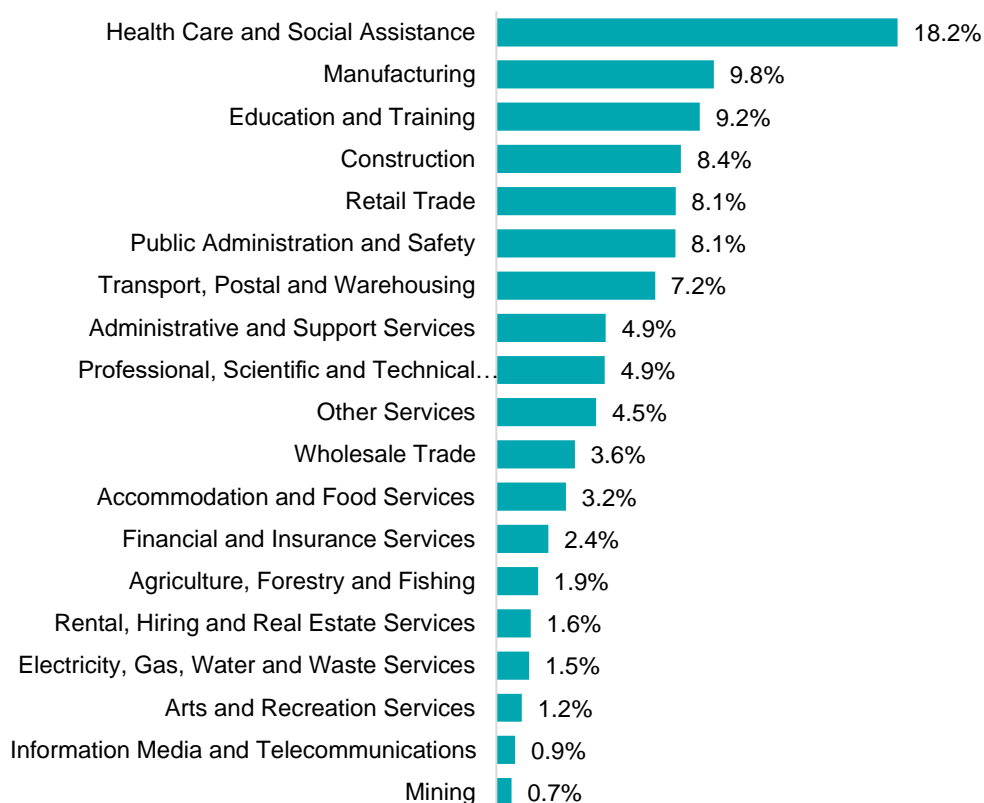
Employment characteristics by Industry

Which industries are youth (aged 15-24) employed in?



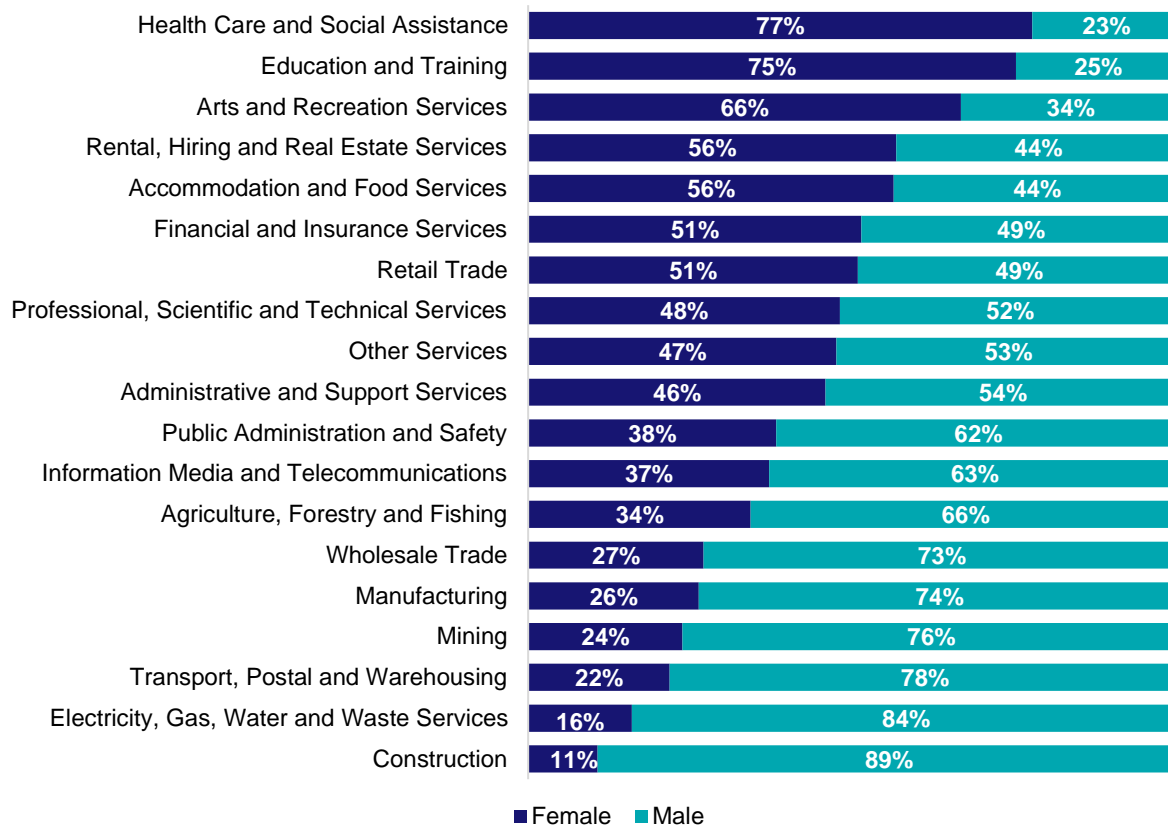
Source: ABS Census of Population and Housing, 2021.

Which industries are mature age persons (aged 55+) employed in?



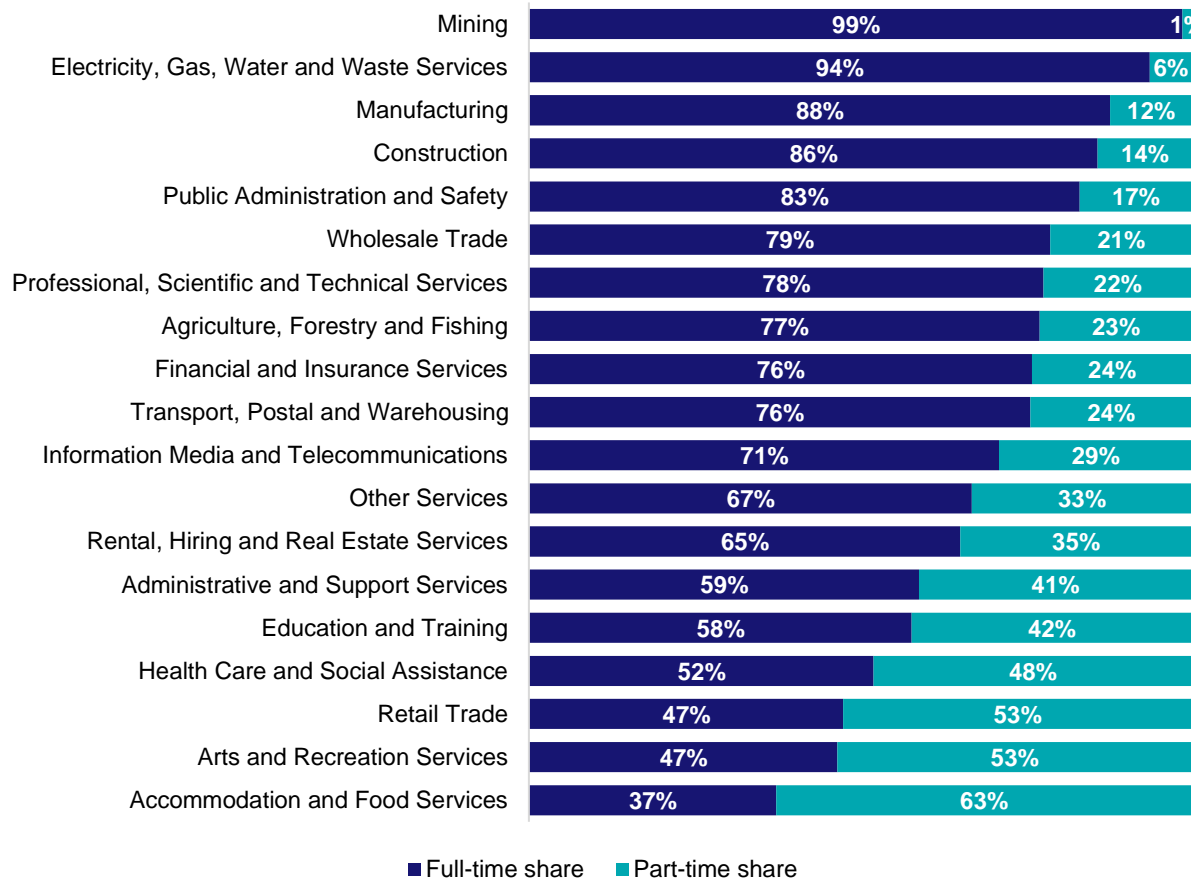
Source: ABS Census of Population and Housing, 2021. Note: SA2 level Census data have been aggregated to the Employment Region level.

Gender share by industry



Source: ABS Labour Force Survey, Detailed, four quarter averages, February 2025.

Full-time and part-time employment status by industry



Source: ABS Labour Force Survey, Detailed, four quarter averages, February 2025.

Appendix

Employment by industry, Adelaide North, February 2025

| Industry (in order of size) | Share of employment in the region Feb-25 (%) | Employed ('000) | | | Full-time share % | Part-time share % | Median age * |
|---|--|-----------------|--------------|--------------|-------------------|-------------------|--------------|
| | | Feb-25 | Feb-24 | Feb-20 | | | |
| Health Care and Social Assistance | 17.2 | 64.4 | 68.2 | 48.9 | 52.0 | 48.0 | 40 |
| Retail Trade | 10.0 | 37.2 | 35.5 | 35.5 | 47.5 | 52.5 | 32 |
| Construction | 9.5 | 35.5 | 34.3 | 31.1 | 85.9 | 14.1 | 38 |
| Manufacturing | 8.7 | 32.6 | 29.3 | 31.4 | 87.7 | 12.3 | 43 |
| Education and Training | 7.9 | 29.5 | 26.8 | 26.3 | 57.8 | 42.2 | 41 |
| Public Administration and Safety | 7.3 | 27.4 | 26.0 | 21.7 | 83.2 | 16.8 | 42 |
| Professional, Scientific and Technical Services | 7.3 | 27.2 | 27.7 | 21.4 | 77.7 | 22.3 | 38 |
| Accommodation and Food Services | 5.9 | 22.1 | 21.1 | 23.6 | 37.3 | 62.7 | 26 |
| Transport, Postal and Warehousing | 5.4 | 20.0 | 22.5 | 18.7 | 75.7 | 24.3 | 42 |
| Other Services | 4.5 | 16.9 | 14.6 | 13.4 | 66.9 | 33.1 | 38 |
| Administrative and Support Services | 3.9 | 14.7 | 15.0 | 13.3 | 58.9 | 41.1 | 40 |
| Wholesale Trade | 2.8 | 10.5 | 13.7 | 9.9 | 78.7 | 21.3 | 43 |
| Financial and Insurance Services | 2.8 | 10.3 | 11.6 | 8.0 | 76.0 | 24.0 | 39 |
| Arts and Recreation Services | 1.7 | 6.3 | 6.0 | 4.5 | 46.6 | 53.4 | 31 |
| Electricity, Gas, Water and Waste Services | 1.4 | 5.4 | 6.2 | 4.5 | 93.7 | 6.3 | 41 |
| Rental, Hiring and Real Estate Services | 1.3 | 4.9 | 5.1 | 4.4 | 65.1 | 34.9 | 41 |
| Information Media and Telecommunications | 0.9 | 3.5 | 4.0 | 4.7 | 71.0 | 29.0 | 38 |
| Agriculture, Forestry and Fishing | 0.8 | 3.0 | 4.5 | 3.7 | 77.1 | 22.9 | 44 |
| Mining | 0.7 | 2.7 | 4.3 | 2.5 | 98.7 | 1.3 | 37 |
| All industries | 100.0 | 373.9 | 376.4 | 327.5 | 66.6 | 33.4 | 39 |

Source: ABS Labour Force Survey, Detailed, four quarter averages, February 2025. *Median age is from the ABS Census of Population and Housing, 2021. Median age has been derived using aggregated SA2s for the Employment Region.

Note: Small cells should be viewed with caution due to small sample sizes and regional volatility.



Employment Region Industry profile

Adelaide South Employment Region

Release date: 27 March 2025

Overview

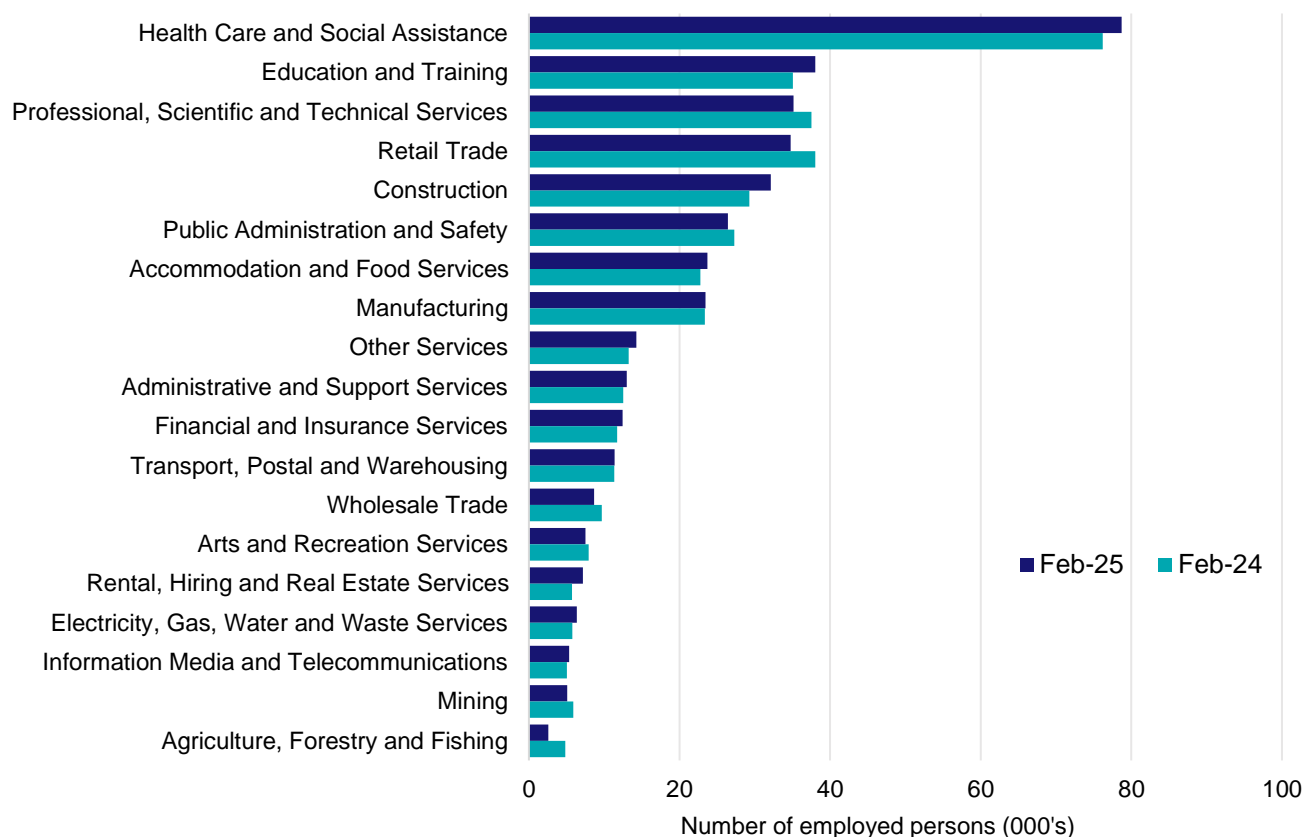
In February 2025, there were around 386,100 people employed in the Adelaide South Employment Region. The 5 largest employing industries in the region were Health Care and Social Assistance, Education and Training, Professional, Scientific and Technical Services, Retail Trade, and Construction. Together these 5 industries accounted for 57% of employment in the region.

Over the year to February 2025, employment in:

- Health Care and Social Assistance rose by 3.2% to stand at 78,700
- Education and Training rose by 8.5% to stand at 38,000
- Professional, Scientific and Technical Services fell by 6.4% to stand at 35,100.

In Health Care and Social Assistance in the Adelaide South Employment Region, 56% of workers were employed full-time; 72% were female; and the median age of the workforce was 43.

Employment by industry, February 2025 and February 2024



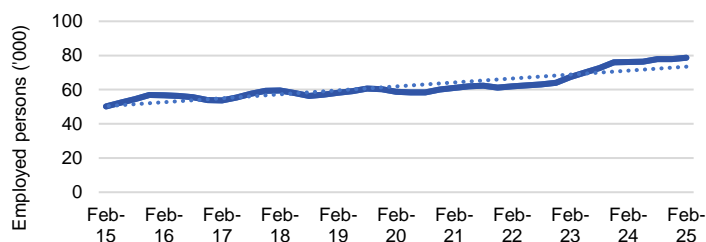
Source: ABS Labour Force Survey*, Detailed, four quarter averages, February 2025. Note that total employment for the region (four quarter averaged data) will not match data published in the Employment Region Labour Market dashboards (modelled estimates).

*ABS Labour Force Survey data are based on the combined SA4s of Adelaide - Central and Hills; and Adelaide - South.

Notes: Data are the latest available. A high degree of caution should be exercised when interpreting data at the regional level, particularly in regards to percentage changes, given the volatility of the underlying data. For any enquiries related to the data in this report, please contact RegionalWorkforceAssessment@jobsandskills.gov.au

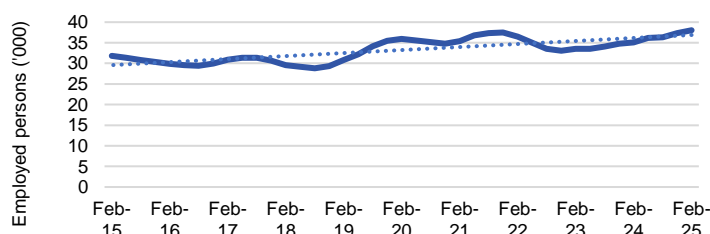
Five largest employing industries: key statistics

Health Care and Social Assistance



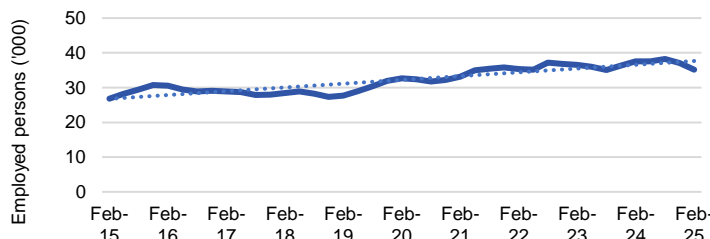
| | |
|---------------------------------|--------|
| Number employed (Feb-25): | 78,700 |
| 1 year employment change: | 3.2% |
| 5 year employment change: | 34.0% |
| 10 year employment change: | 56.8% |
| Youth share of employment: | 10.6% |
| Mature age share of employment: | 20.6% |

Education and Training



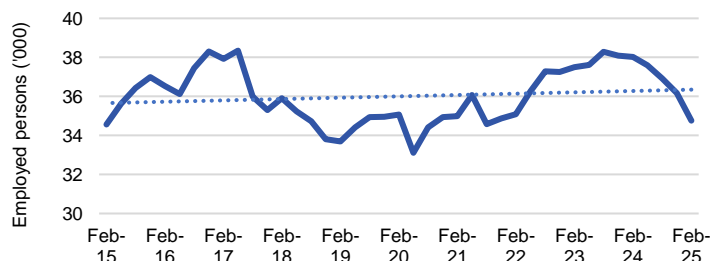
| | |
|---------------------------------|--------|
| Number employed (Feb-25): | 38,000 |
| 1 year employment change: | 8.5% |
| 5 year employment change: | 5.9% |
| 10 year employment change: | 19.4% |
| Youth share of employment: | 6.3% |
| Mature age share of employment: | 11.6% |

Professional, Scientific and Technical Services



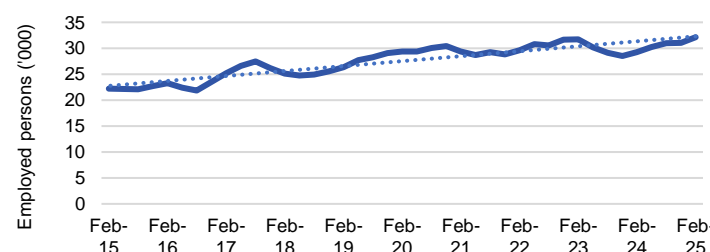
| | |
|---------------------------------|--------|
| Number employed (Feb-25): | 35,100 |
| 1 year employment change: | -6.4% |
| 5 year employment change: | 7.4% |
| 10 year employment change: | 31.0% |
| Youth share of employment: | 4.3% |
| Mature age share of employment: | 8.3% |

Retail Trade



| | |
|---------------------------------|--------|
| Number employed (Feb-25): | 34,800 |
| 1 year employment change: | -8.6% |
| 5 year employment change: | -0.9% |
| 10 year employment change: | 0.6% |
| Youth share of employment: | 22.9% |
| Mature age share of employment: | 7.1% |

Construction



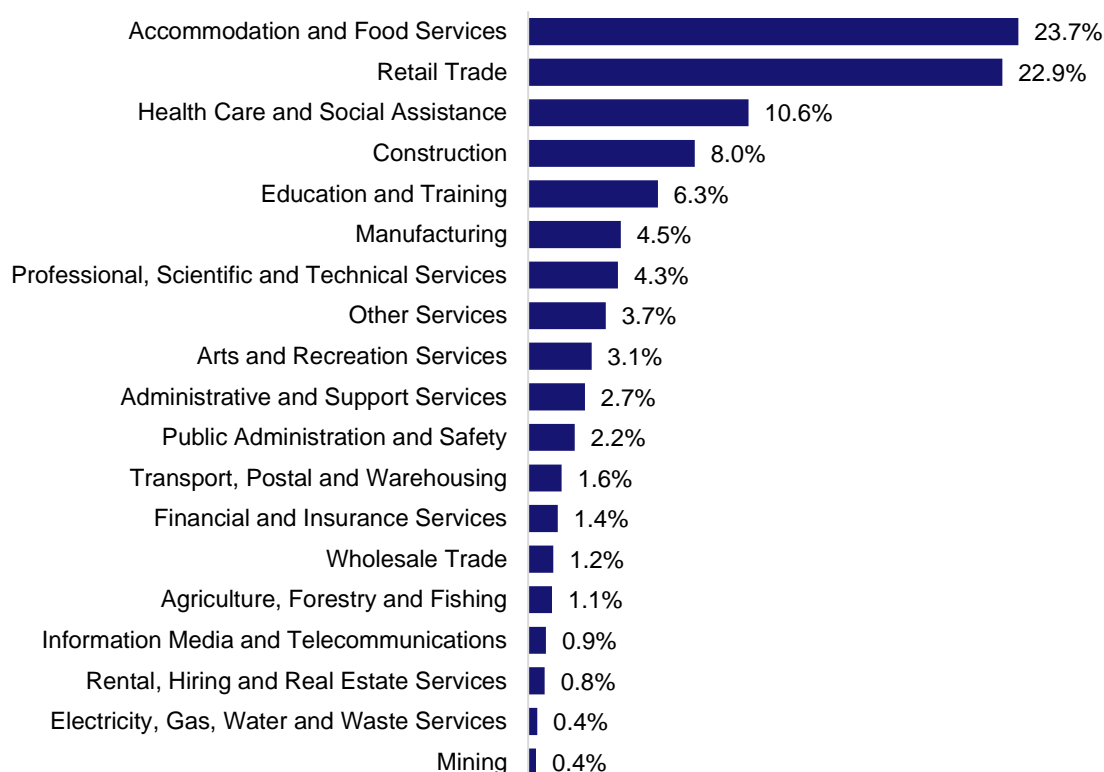
| | |
|---------------------------------|--------|
| Number employed (Feb-25): | 32,100 |
| 1 year employment change: | 9.8% |
| 5 year employment change: | 9.3% |
| 10 year employment change: | 44.6% |
| Youth share of employment: | 8.0% |
| Mature age share of employment: | 7.6% |

Source: ABS Labour Force Survey, Detailed, four quarter averages, February 2025, except youth and mature age data which are from the ABS Census of Population and Housing, 2021.

Notes: In each chart, the solid line is the level of employment and the dotted line is a simple linear trend line for the 10 year period. Given the volatility of the underlying data, employment estimates should be treated with a high degree of caution. Particular focus should be placed on the employment series over time to ascertain more reliable long-term growth trends.

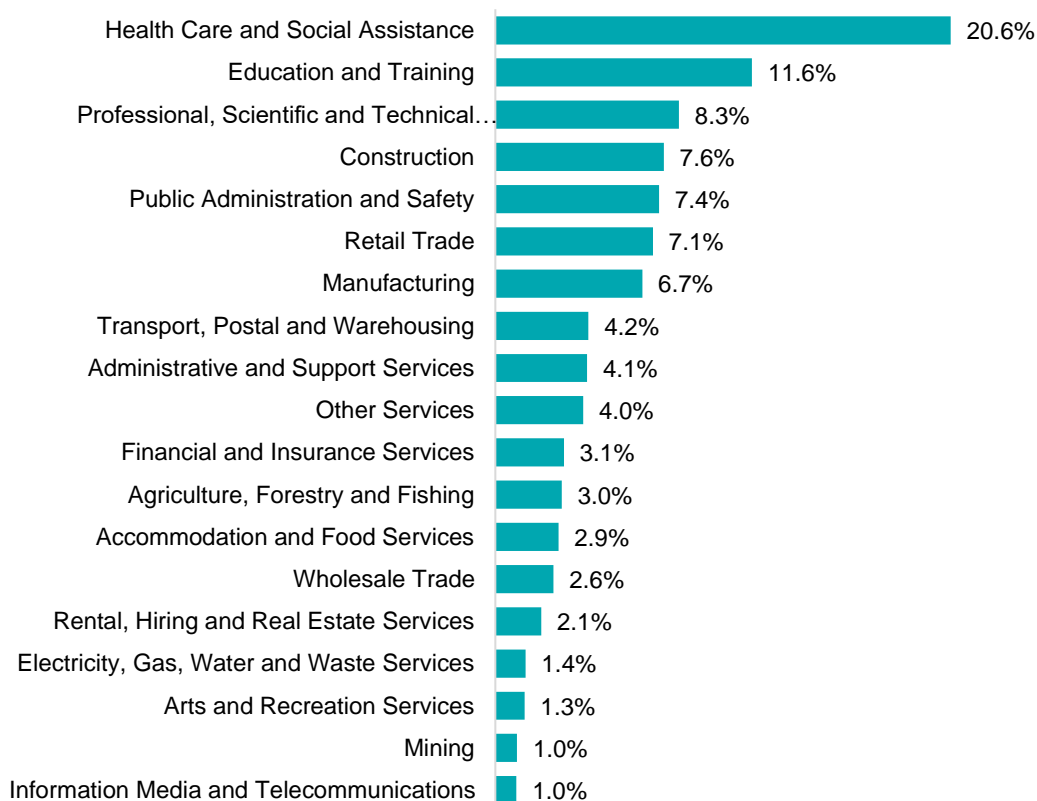
Employment characteristics by Industry

Which industries are youth (aged 15-24) employed in?



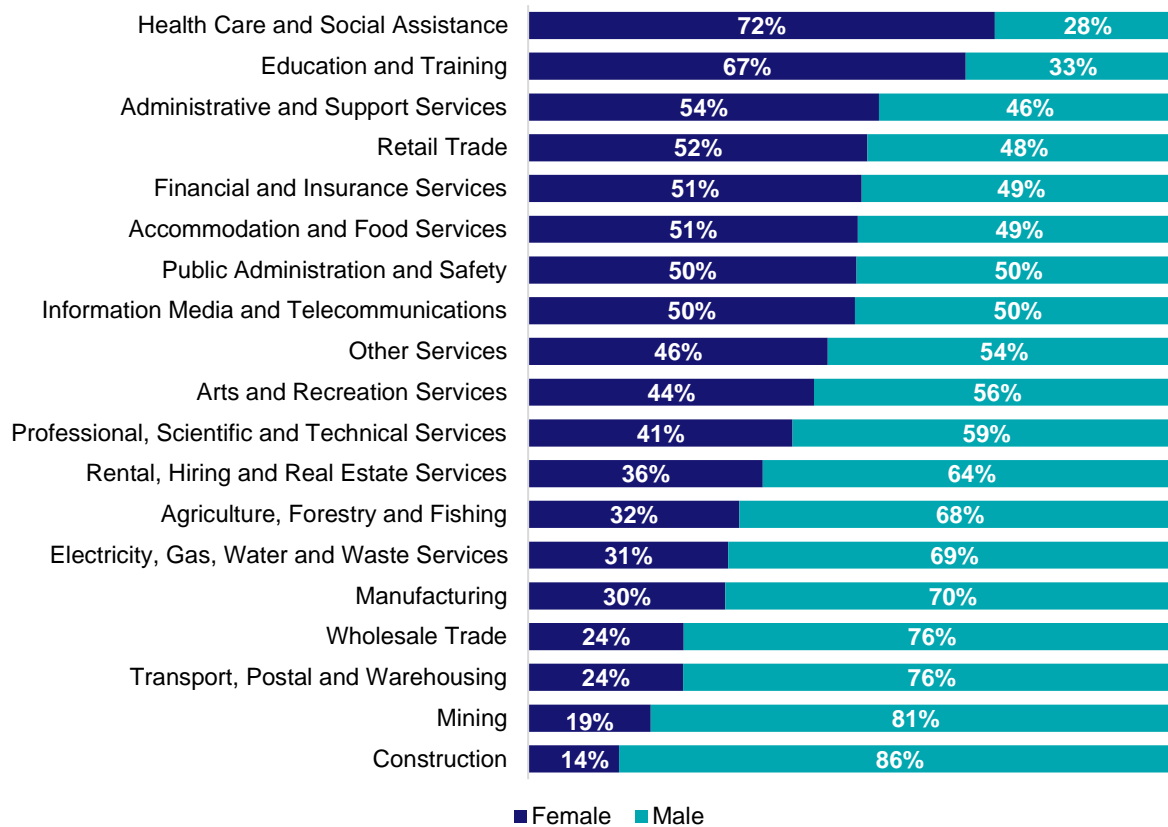
Source: ABS Census of Population and Housing, 2021.

Which industries are mature age persons (aged 55+) employed in?



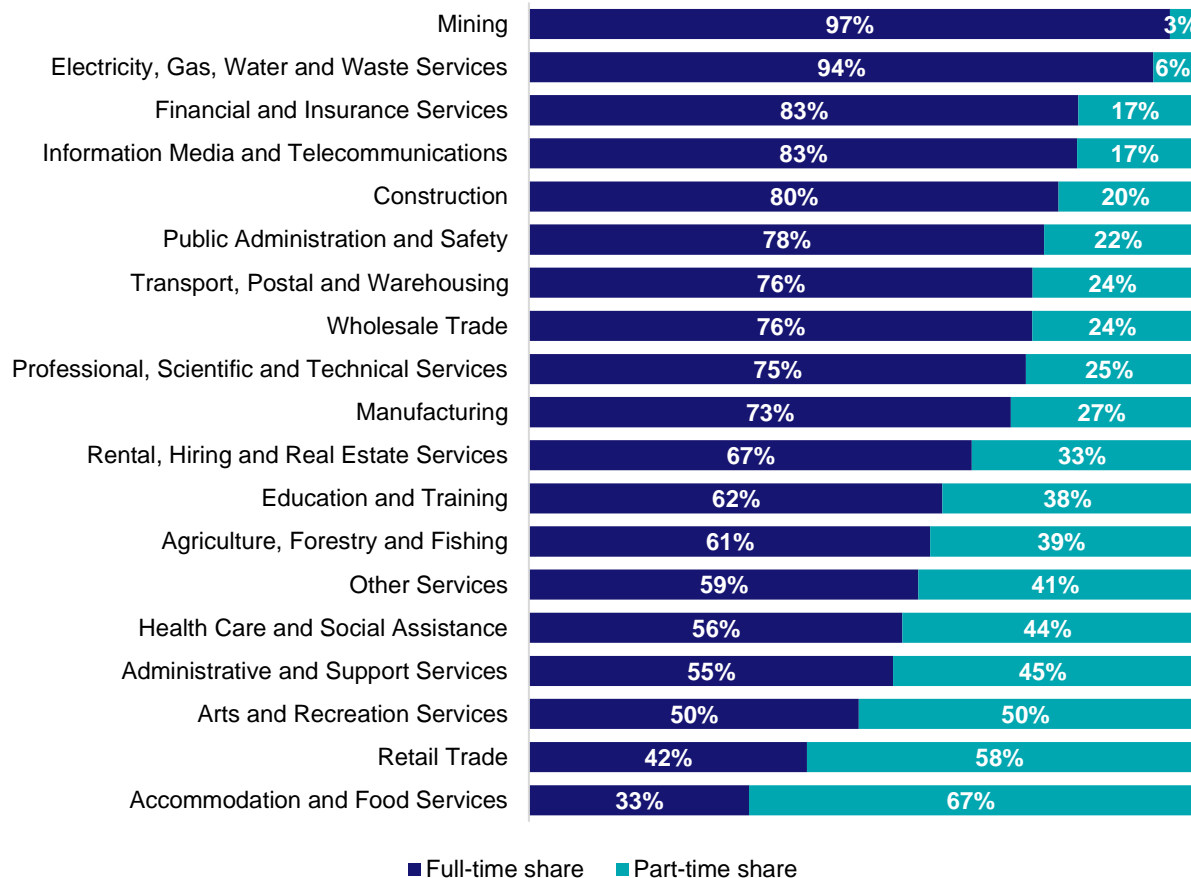
Source: ABS Census of Population and Housing, 2021. Note: SA2 level Census data have been aggregated to the Employment Region level.

Gender share by industry



Source: ABS Labour Force Survey, Detailed, four quarter averages, February 2025.

Full-time and part-time employment status by industry



Source: ABS Labour Force Survey, Detailed, four quarter averages, February 2025.

Appendix

Employment by industry, Adelaide South, February 2025

| Industry (in order of size) | Share of employment in the region Feb-25 (%) | Employed ('000) | | | Full-time share % | Part-time share % | Median age * |
|---|--|-----------------|--------------|--------------|-------------------|-------------------|--------------|
| | | Feb-25 | Feb-24 | Feb-20 | | | |
| Health Care and Social Assistance | 20.4 | 78.7 | 76.2 | 58.7 | 56.4 | 43.6 | 43 |
| Education and Training | 9.9 | 38.0 | 35.1 | 35.9 | 62.4 | 37.6 | 44 |
| Professional, Scientific and Technical Services | 9.1 | 35.1 | 37.5 | 32.7 | 75.0 | 25.0 | 42 |
| Retail Trade | 9.0 | 34.8 | 38.0 | 35.1 | 42.0 | 58.0 | 32 |
| Construction | 8.3 | 32.1 | 29.3 | 29.4 | 80.0 | 20.0 | 40 |
| Public Administration and Safety | 6.8 | 26.4 | 27.3 | 21.9 | 77.8 | 22.2 | 45 |
| Accommodation and Food Services | 6.1 | 23.7 | 22.8 | 25.3 | 33.2 | 66.8 | 24 |
| Manufacturing | 6.1 | 23.5 | 23.4 | 22.4 | 72.8 | 27.2 | 45 |
| Other Services | 3.7 | 14.3 | 13.2 | 14.7 | 58.8 | 41.2 | 41 |
| Administrative and Support Services | 3.4 | 13.0 | 12.5 | 13.7 | 55.0 | 45.0 | 43 |
| Financial and Insurance Services | 3.2 | 12.4 | 11.7 | 9.3 | 82.9 | 17.1 | 42 |
| Transport, Postal and Warehousing | 2.9 | 11.4 | 11.3 | 10.8 | 76.0 | 24.0 | 46 |
| Wholesale Trade | 2.2 | 8.6 | 9.7 | 11.8 | 76.0 | 24.0 | 46 |
| Arts and Recreation Services | 1.9 | 7.5 | 7.9 | 5.8 | 49.8 | 50.2 | 33 |
| Rental, Hiring and Real Estate Services | 1.9 | 7.2 | 5.7 | 5.1 | 66.9 | 33.1 | 46 |
| Electricity, Gas, Water and Waste Services | 1.7 | 6.4 | 5.8 | 6.3 | 94.3 | 5.7 | 45 |
| Information Media and Telecommunications | 1.4 | 5.4 | 5.1 | 7.4 | 82.8 | 17.2 | 40 |
| Mining | 1.3 | 5.1 | 5.9 | 3.5 | 96.8 | 3.2 | 41 |
| Agriculture, Forestry and Fishing | 0.7 | 2.6 | 4.8 | 2.4 | 60.6 | 39.4 | 50 |
| All industries | 100.0 | 386.1 | 383.2 | 352.0 | 63.9 | 36.1 | 41 |

Source: ABS Labour Force Survey, Detailed, four quarter averages, February 2025. *Median age is from the ABS Census of Population and Housing, 2021. Median age has been derived using aggregated SA2s for the Employment Region.

Note: Small cells should be viewed with caution due to small sample sizes and regional volatility.



Employment Region Industry profile

Mid North SA Employment Region

Release date: 27 March 2025

Overview

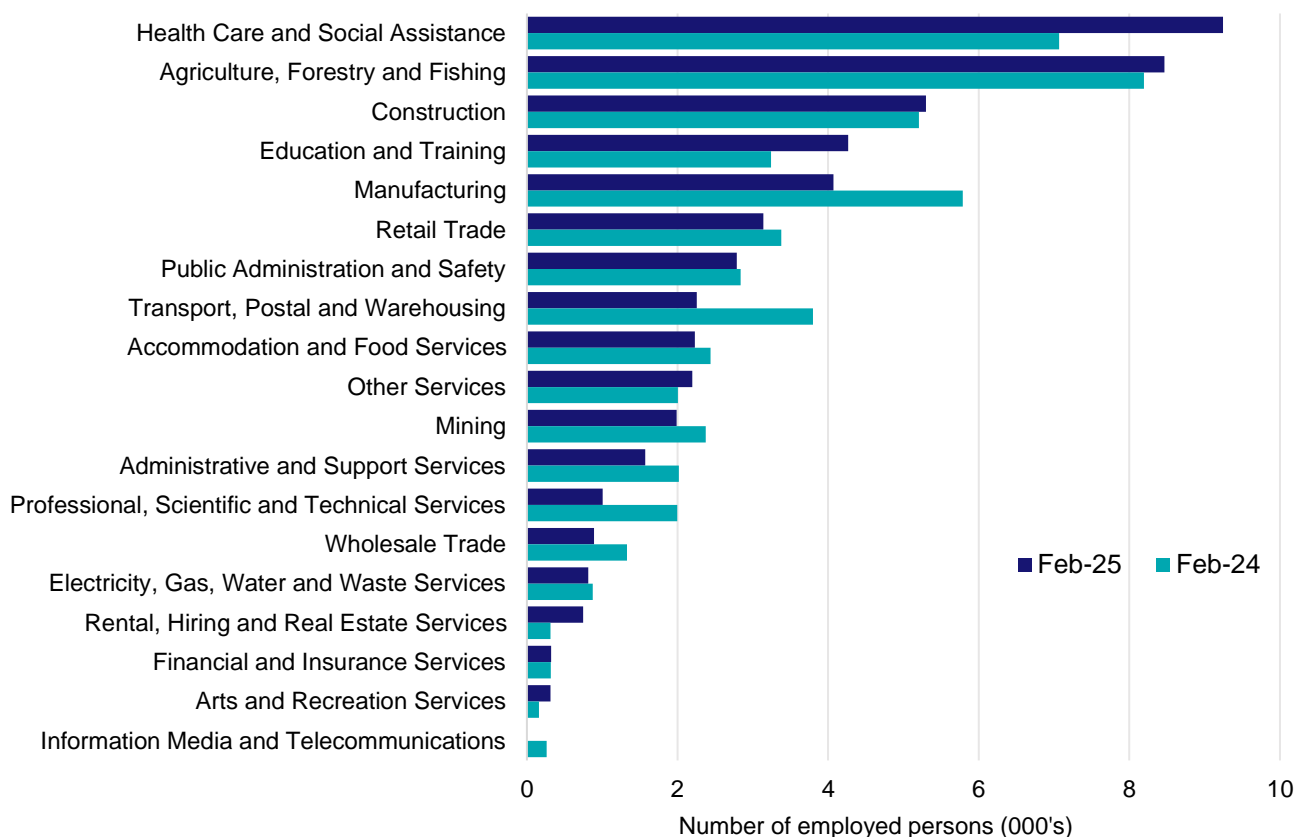
In February 2025, there were around 51,600 people employed in the Mid North SA Employment Region. The 5 largest employing industries in the region were Health Care and Social Assistance, Agriculture, Forestry and Fishing, Construction, Education and Training, and Manufacturing. Together these 5 industries accounted for 61% of employment in the region.

Over the year to February 2025, employment in:

- Health Care and Social Assistance rose by 30.8% to stand at 9,200
- Agriculture, Forestry and Fishing rose by 3.3% to stand at 8,500
- Construction rose by 1.8% to stand at 5,300.

In Health Care and Social Assistance in the Mid North SA Employment Region, 60% of workers were employed part-time; 79% were female; and the median age of the workforce was 48.

Employment by industry, February 2025 and February 2024



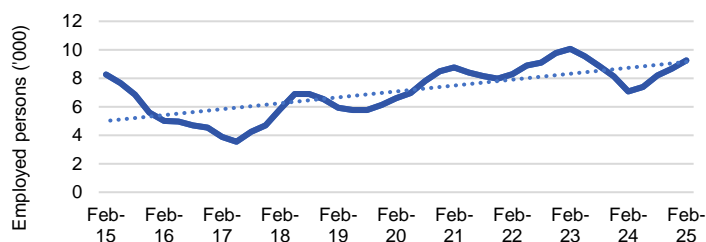
Source: ABS Labour Force Survey*, Detailed, four quarter averages, February 2025. Note that total employment for the region (four quarter averaged data) will not match data published in the Employment Region Labour Market dashboards (modelled estimates).

*ABS Labour Force Survey data are based on the Barossa - Yorke - Mid North SA4.

Notes: Data are the latest available. A high degree of caution should be exercised when interpreting data at the regional level, particularly in regards to percentage changes, given the volatility of the underlying data. For any enquiries related to the data in this report, please contact RegionalWorkforceAssessment@jobsandskills.gov.au

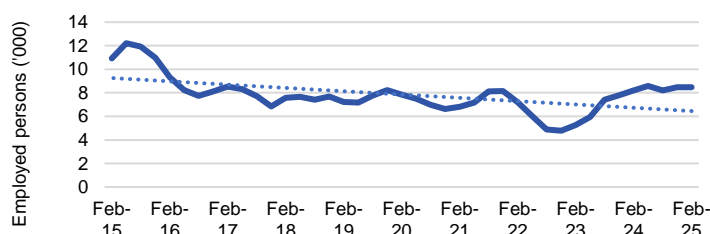
Five largest employing industries: key statistics

Health Care and Social Assistance



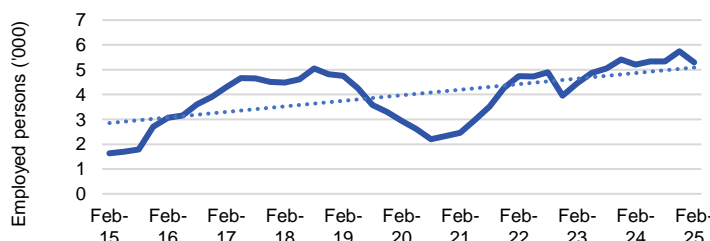
| | |
|---------------------------------|-------|
| Number employed (Feb-25): | 9,200 |
| 1 year employment change: | 30.8% |
| 5 year employment change: | 39.9% |
| 10 year employment change: | 11.9% |
| Youth share of employment: | 9.0% |
| Mature age share of employment: | 15.1% |

Agriculture, Forestry and Fishing



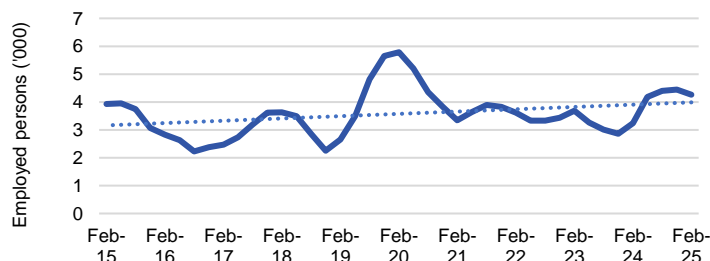
| | |
|---------------------------------|--------|
| Number employed (Feb-25): | 8,500 |
| 1 year employment change: | 3.3% |
| 5 year employment change: | 7.9% |
| 10 year employment change: | -22.4% |
| Youth share of employment: | 8.4% |
| Mature age share of employment: | 20.0% |

Construction



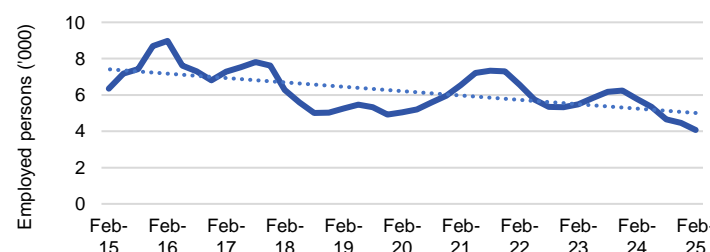
| | |
|---------------------------------|--------|
| Number employed (Feb-25): | 5,300 |
| 1 year employment change: | 1.8% |
| 5 year employment change: | 80.8% |
| 10 year employment change: | 224.5% |
| Youth share of employment: | 9.4% |
| Mature age share of employment: | 6.2% |

Education and Training



| | |
|---------------------------------|--------|
| Number employed (Feb-25): | 4,300 |
| 1 year employment change: | 31.5% |
| 5 year employment change: | -26.3% |
| 10 year employment change: | 8.4% |
| Youth share of employment: | 4.8% |
| Mature age share of employment: | 8.0% |

Manufacturing



| | |
|---------------------------------|--------|
| Number employed (Feb-25): | 4,100 |
| 1 year employment change: | -29.7% |
| 5 year employment change: | -19.3% |
| 10 year employment change: | -35.9% |
| Youth share of employment: | 11.6% |
| Mature age share of employment: | 9.8% |

Source: ABS Labour Force Survey, Detailed, four quarter averages, February 2025, except youth and mature age data which are from the ABS Census of Population and Housing, 2021.

Notes: In each chart, the solid line is the level of employment and the dotted line is a simple linear trend line for the 10 year period. Given the volatility of the underlying data, employment estimates should be treated with a high degree of caution. Particular focus should be placed on the employment series over time to ascertain more reliable long-term growth trends.

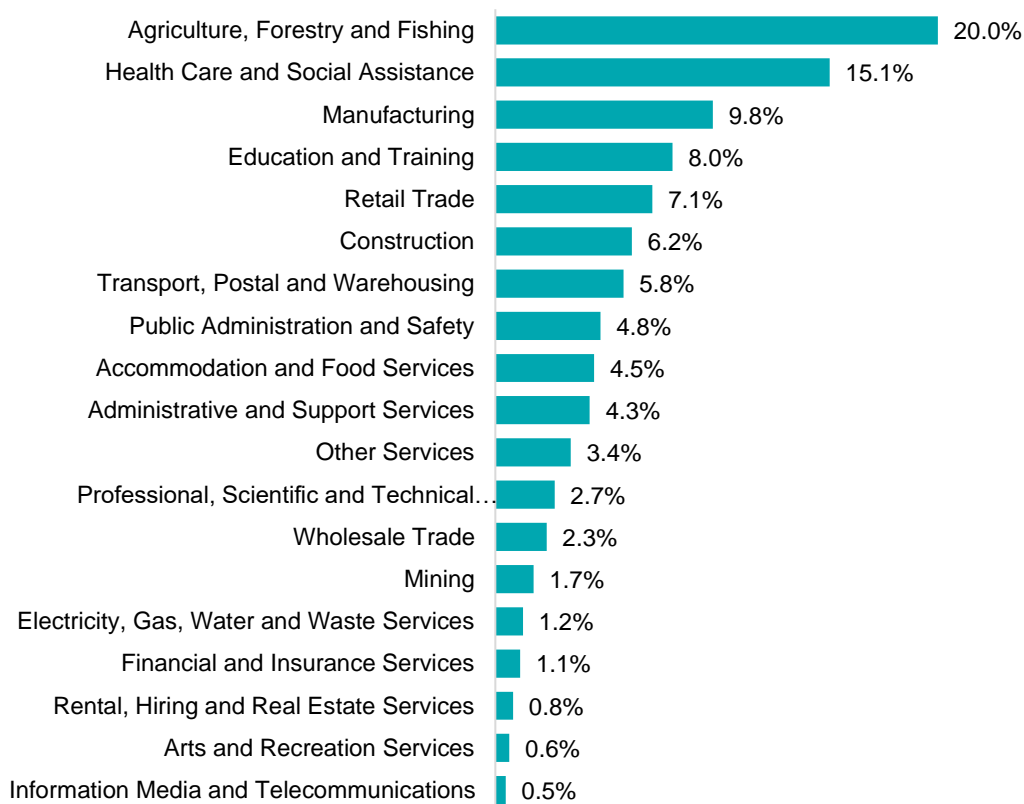
Employment characteristics by Industry

Which industries are youth (aged 15-24) employed in?



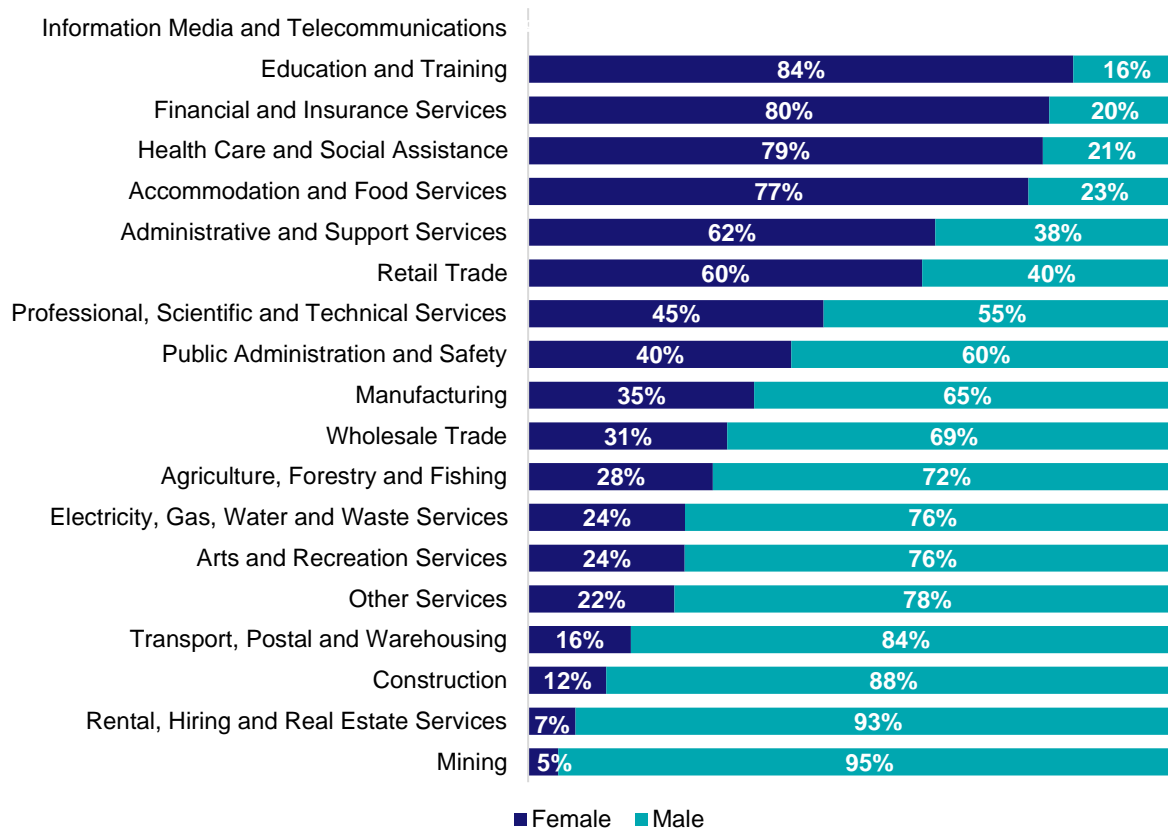
Source: ABS Census of Population and Housing, 2021.

Which industries are mature age persons (aged 55+) employed in?



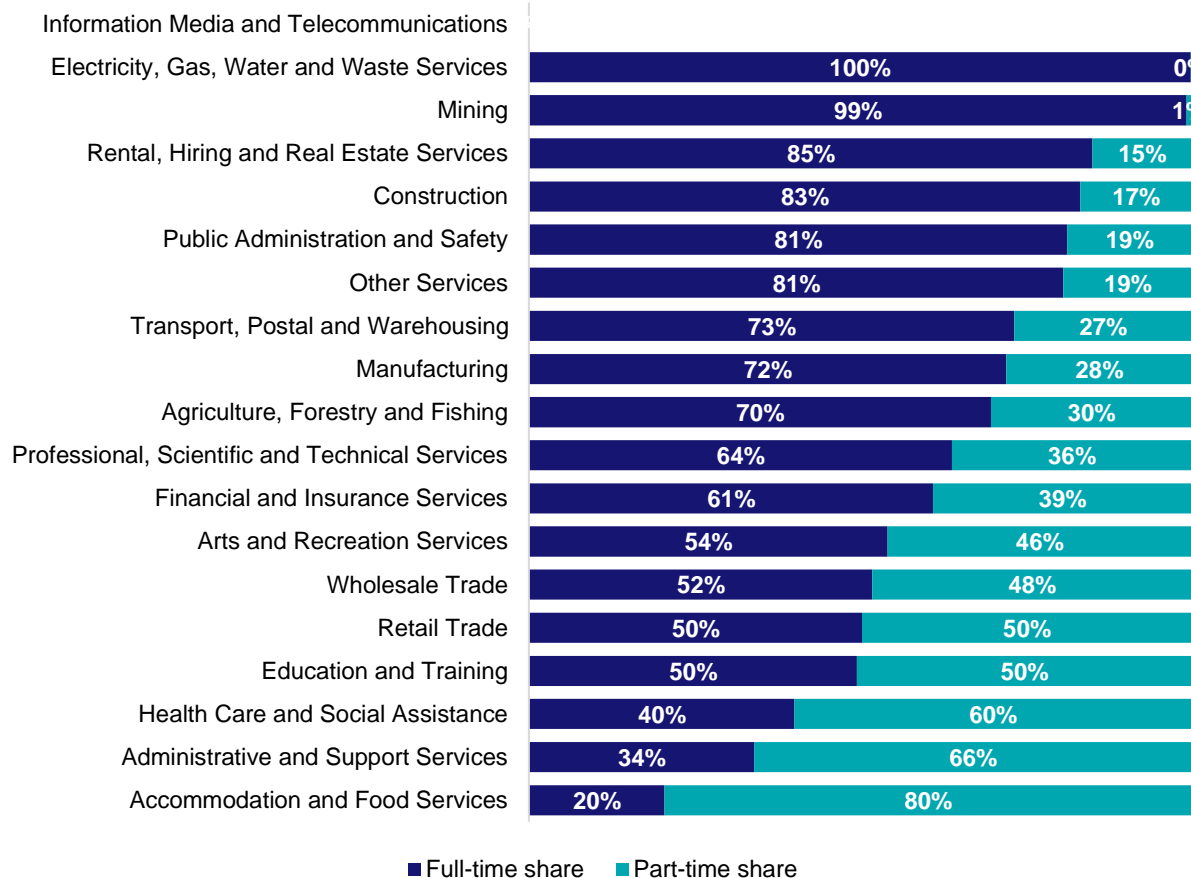
Source: ABS Census of Population and Housing, 2021. Note: SA2 level Census data have been aggregated to the Employment Region level.

Gender share by industry



Source: ABS Labour Force Survey, Detailed, four quarter averages, February 2025.

Full-time and part-time employment status by industry



Source: ABS Labour Force Survey, Detailed, four quarter averages, February 2025.

Appendix

Employment by industry, Mid North SA, February 2025

| Industry (in order of size) | Share of employment in the region Feb-25 (%) | Employed ('000) | | | Full-time share % | Part-time share % | Median age * |
|---|--|-----------------|-------------|-------------|-------------------|-------------------|--------------|
| | | Feb-25 | Feb-24 | Feb-20 | | | |
| Health Care and Social Assistance | 17.9 | 9.2 | 7.1 | 6.6 | 40.1 | 59.9 | 48 |
| Agriculture, Forestry and Fishing | 16.4 | 8.5 | 8.2 | 7.8 | 69.8 | 30.2 | 52 |
| Construction | 10.3 | 5.3 | 5.2 | 2.9 | 83.2 | 16.8 | 40 |
| Education and Training | 8.3 | 4.3 | 3.2 | 5.8 | 49.5 | 50.5 | 46 |
| Manufacturing | 7.9 | 4.1 | 5.8 | 5.0 | 72.1 | 27.9 | 44 |
| Retail Trade | 6.1 | 3.1 | 3.4 | 4.9 | 50.3 | 49.7 | 37 |
| Public Administration and Safety | 5.4 | 2.8 | 2.8 | 2.6 | 81.3 | 18.7 | 49 |
| Transport, Postal and Warehousing | 4.4 | 2.3 | 3.8 | 2.2 | 73.3 | 26.7 | 51 |
| Accommodation and Food Services | 4.3 | 2.2 | 2.4 | 4.1 | 20.5 | 79.5 | 32 |
| Other Services | 4.3 | 2.2 | 2.0 | 2.2 | 80.7 | 19.3 | 43 |
| Mining | 3.9 | 2.0 | 2.4 | 1.4 | 99.3 | 0.7 | 43 |
| Administrative and Support Services | 3.0 | 1.6 | 2.0 | 2.1 | 34.0 | 66.0 | 48 |
| Professional, Scientific and Technical Services | 1.9 | 1.0 | 2.0 | 1.4 | 63.9 | 36.1 | 44 |
| Wholesale Trade | 1.7 | 0.9 | 1.3 | 1.4 | 51.8 | 48.2 | 49 |
| Electricity, Gas, Water and Waste Services | 1.6 | 0.8 | 0.9 | 0.9 | 99.9 | 0.1 | 42 |
| Rental, Hiring and Real Estate Services | 1.4 | 0.7 | 0.3 | 0.4 | 85.1 | 14.9 | 51 |
| Financial and Insurance Services | 0.6 | 0.3 | 0.3 | 1.0 | 61.0 | 39.0 | 43 |
| Arts and Recreation Services | 0.6 | 0.3 | 0.2 | 0.2 | 54.1 | 45.9 | 28 |
| Information Media and Telecommunications | 0.0 | 0.0 | 0.3 | 0.5 | - | - | 38 |
| All industries | 100.0 | 51.6 | 53.6 | 53.4 | 62.4 | 37.6 | 45 |

Source: ABS Labour Force Survey, Detailed, four quarter averages, February 2025. *Median age is from the ABS Census of Population and Housing, 2021. Median age has been derived using aggregated SA2s for the Employment Region.

Note: Small cells should be viewed with caution due to small sample sizes and regional volatility.

Employment Region Industry profile

Murray and South East Employment Region

Release date: 27 March 2025

Overview

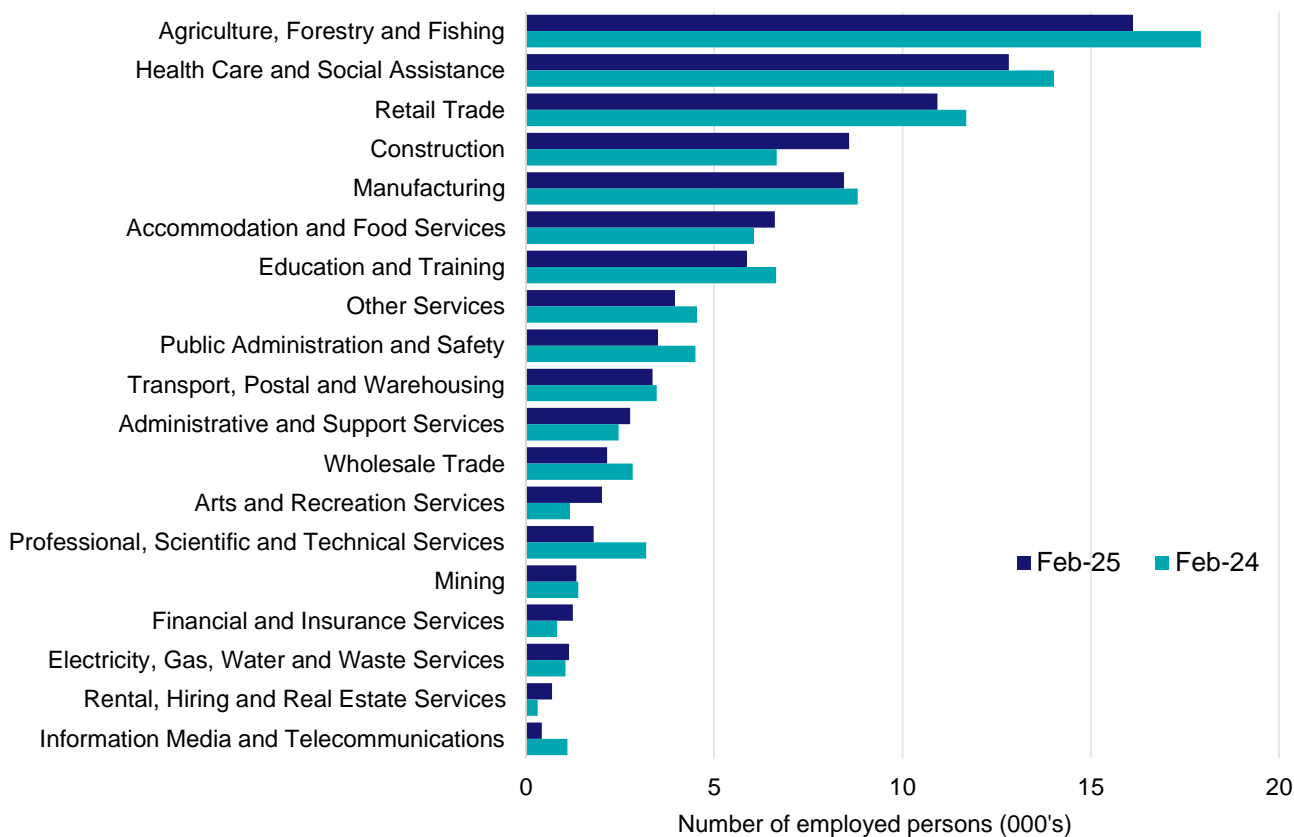
In February 2025, there were around 93,800 people employed in the Murray and South East Employment Region. The 5 largest employing industries in the region were Agriculture, Forestry and Fishing, Health Care and Social Assistance, Retail Trade, Construction, and Manufacturing. Together these 5 industries accounted for 61% of employment in the region.

Over the year to February 2025, employment in:

- Agriculture, Forestry and Fishing fell by 10.1% to stand at 16,100
- Health Care and Social Assistance fell by 8.6% to stand at 12,800
- Retail Trade fell by 6.6% to stand at 10,900.

In Agriculture, Forestry and Fishing in the Murray and South East Employment Region, 71% of workers were employed full-time; 74% were male; and the median age of the workforce was 48.

Employment by industry, February 2025 and February 2024



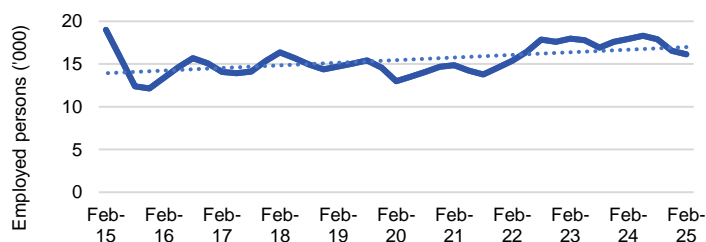
Source: ABS Labour Force Survey*, Detailed, four quarter averages, February 2025. Note that total employment for the region (four quarter averaged data) will not match data published in the Employment Region Labour Market dashboards (modelled estimates).

*ABS Labour Force Survey data are based on the South Australia - South East SA4.

Notes: Data are the latest available. A high degree of caution should be exercised when interpreting data at the regional level, particularly in regards to percentage changes, given the volatility of the underlying data. For any enquiries related to the data in this report, please contact RegionalWorkforceAssessment@jobsandskills.gov.au

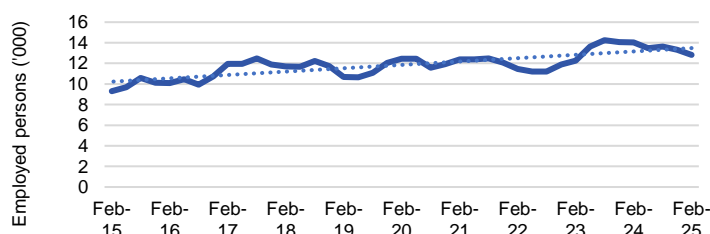
Five largest employing industries: key statistics

Agriculture, Forestry and Fishing



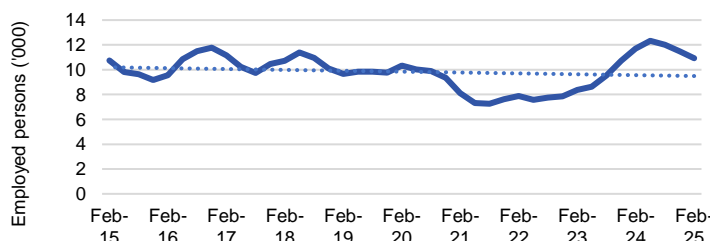
| | |
|---------------------------------|--------|
| Number employed (Feb-25): | 16,100 |
| 1 year employment change: | -10.1% |
| 5 year employment change: | 24.0% |
| 10 year employment change: | -15.2% |
| Youth share of employment: | 12.6% |
| Mature age share of employment: | 25.3% |

Health Care and Social Assistance



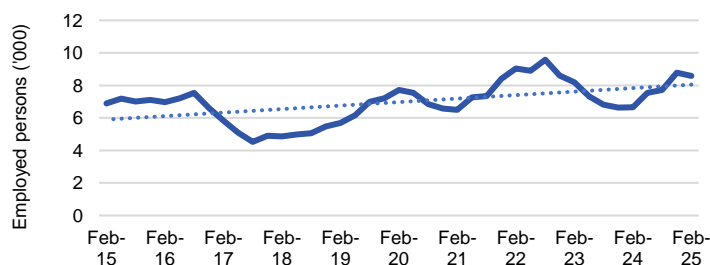
| | |
|---------------------------------|--------|
| Number employed (Feb-25): | 12,800 |
| 1 year employment change: | -8.6% |
| 5 year employment change: | 3.1% |
| 10 year employment change: | 37.9% |
| Youth share of employment: | 8.6% |
| Mature age share of employment: | 14.2% |

Retail Trade



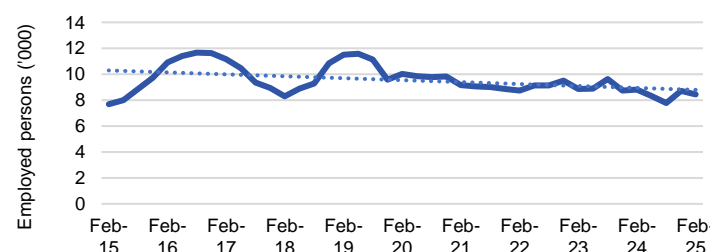
| | |
|---------------------------------|--------|
| Number employed (Feb-25): | 10,900 |
| 1 year employment change: | -6.6% |
| 5 year employment change: | 5.7% |
| 10 year employment change: | 1.8% |
| Youth share of employment: | 19.8% |
| Mature age share of employment: | 7.7% |

Construction



| | |
|---------------------------------|-------|
| Number employed (Feb-25): | 8,600 |
| 1 year employment change: | 28.8% |
| 5 year employment change: | 11.0% |
| 10 year employment change: | 24.6% |
| Youth share of employment: | 9.1% |
| Mature age share of employment: | 6.6% |

Manufacturing



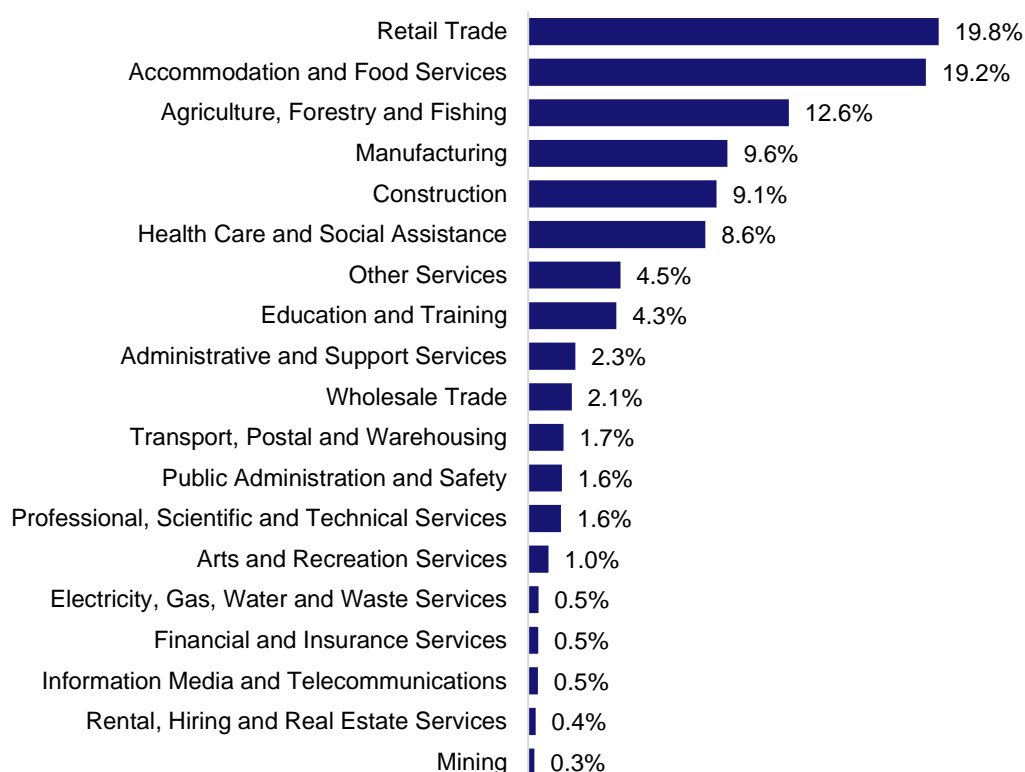
| | |
|---------------------------------|--------|
| Number employed (Feb-25): | 8,400 |
| 1 year employment change: | -4.2% |
| 5 year employment change: | -15.7% |
| 10 year employment change: | 9.9% |
| Youth share of employment: | 9.6% |
| Mature age share of employment: | 8.9% |

Source: ABS Labour Force Survey, Detailed, four quarter averages, February 2025, except youth and mature age data which are from the ABS Census of Population and Housing, 2021.

Notes: In each chart, the solid line is the level of employment and the dotted line is a simple linear trend line for the 10 year period. Given the volatility of the underlying data, employment estimates should be treated with a high degree of caution. Particular focus should be placed on the employment series over time to ascertain more reliable long-term growth trends.

Employment characteristics by Industry

Which industries are youth (aged 15-24) employed in?



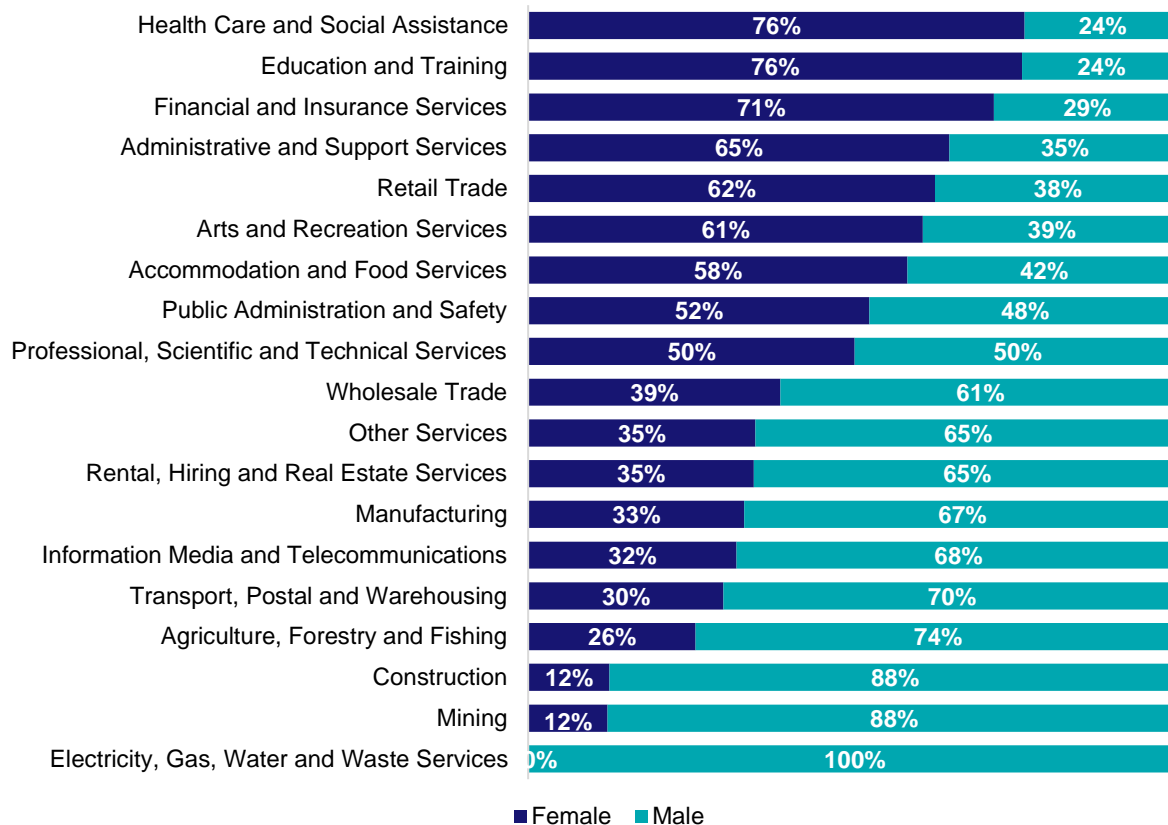
Source: ABS Census of Population and Housing, 2021.

Which industries are mature age persons (aged 55+) employed in?



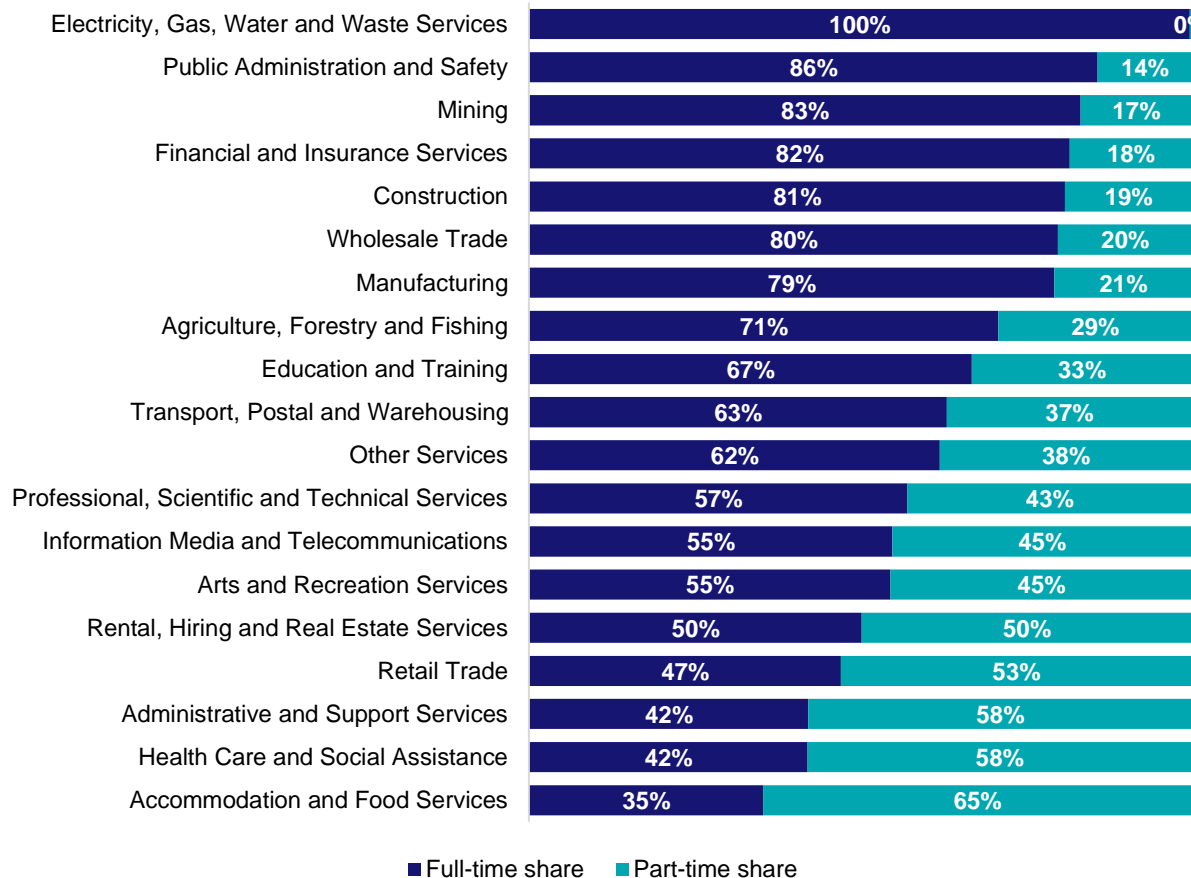
Source: ABS Census of Population and Housing, 2021. Note: SA2 level Census data have been aggregated to the Employment Region level.

Gender share by industry



Source: ABS Labour Force Survey, Detailed, four quarter averages, February 2025.

Full-time and part-time employment status by industry



Source: ABS Labour Force Survey, Detailed, four quarter averages, February 2025.

Appendix

Employment by industry, Murray and South East, February 2025

| Industry (in order of size) | Share of employment in the region Feb-25 (%) | Employed ('000) | | | Full-time share % | Part-time share % | Median age * |
|---|--|-----------------|-------------|-------------|-------------------|-------------------|--------------|
| | | Feb-25 | Feb-24 | Feb-20 | | | |
| Agriculture, Forestry and Fishing | 17.2 | 16.1 | 17.9 | 13.0 | 70.9 | 29.1 | 48 |
| Health Care and Social Assistance | 13.7 | 12.8 | 14.0 | 12.4 | 42.1 | 57.9 | 46 |
| Retail Trade | 11.7 | 10.9 | 11.7 | 10.3 | 47.1 | 52.9 | 36 |
| Construction | 9.1 | 8.6 | 6.7 | 7.7 | 80.9 | 19.1 | 40 |
| Manufacturing | 9.0 | 8.4 | 8.8 | 10.0 | 79.4 | 20.6 | 43 |
| Accommodation and Food Services | 7.0 | 6.6 | 6.1 | 5.9 | 35.3 | 64.7 | 27 |
| Education and Training | 6.3 | 5.9 | 6.6 | 6.2 | 66.8 | 33.2 | 44 |
| Other Services | 4.2 | 4.0 | 4.5 | 2.5 | 62.0 | 38.0 | 39 |
| Public Administration and Safety | 3.7 | 3.5 | 4.5 | 3.9 | 85.9 | 14.1 | 47 |
| Transport, Postal and Warehousing | 3.6 | 3.4 | 3.5 | 3.7 | 63.1 | 36.9 | 52 |
| Administrative and Support Services | 3.0 | 2.8 | 2.5 | 3.5 | 42.2 | 57.8 | 47 |
| Wholesale Trade | 2.3 | 2.2 | 2.8 | 1.7 | 79.9 | 20.1 | 47 |
| Arts and Recreation Services | 2.2 | 2.0 | 1.2 | 1.2 | 54.6 | 45.4 | 34 |
| Professional, Scientific and Technical Services | 1.9 | 1.8 | 3.2 | 3.2 | 57.2 | 42.8 | 42 |
| Mining | 1.4 | 1.3 | 1.4 | 0.5 | 83.3 | 16.7 | 45 |
| Financial and Insurance Services | 1.3 | 1.2 | 0.8 | 0.9 | 81.7 | 18.3 | 45 |
| Electricity, Gas, Water and Waste Services | 1.2 | 1.1 | 1.0 | 0.8 | 99.8 | 0.2 | 49 |
| Rental, Hiring and Real Estate Services | 0.7 | 0.7 | 0.3 | 0.9 | 50.2 | 49.8 | 46 |
| Information Media and Telecommunications | 0.5 | 0.4 | 1.1 | 1.1 | 54.9 | 45.1 | 32 |
| All industries | 100.0 | 93.8 | 98.7 | 89.3 | 62.2 | 37.8 | 44 |

Source: ABS Labour Force Survey, Detailed, four quarter averages, February 2025. *Median age is from the ABS Census of Population and Housing, 2021. Median age has been derived using aggregated SA2s for the Employment Region.

Note: Small cells should be viewed with caution due to small sample sizes and regional volatility.



Employment Region Industry profile

North West Country SA Employment Region

Release date: 27 March 2025

Overview

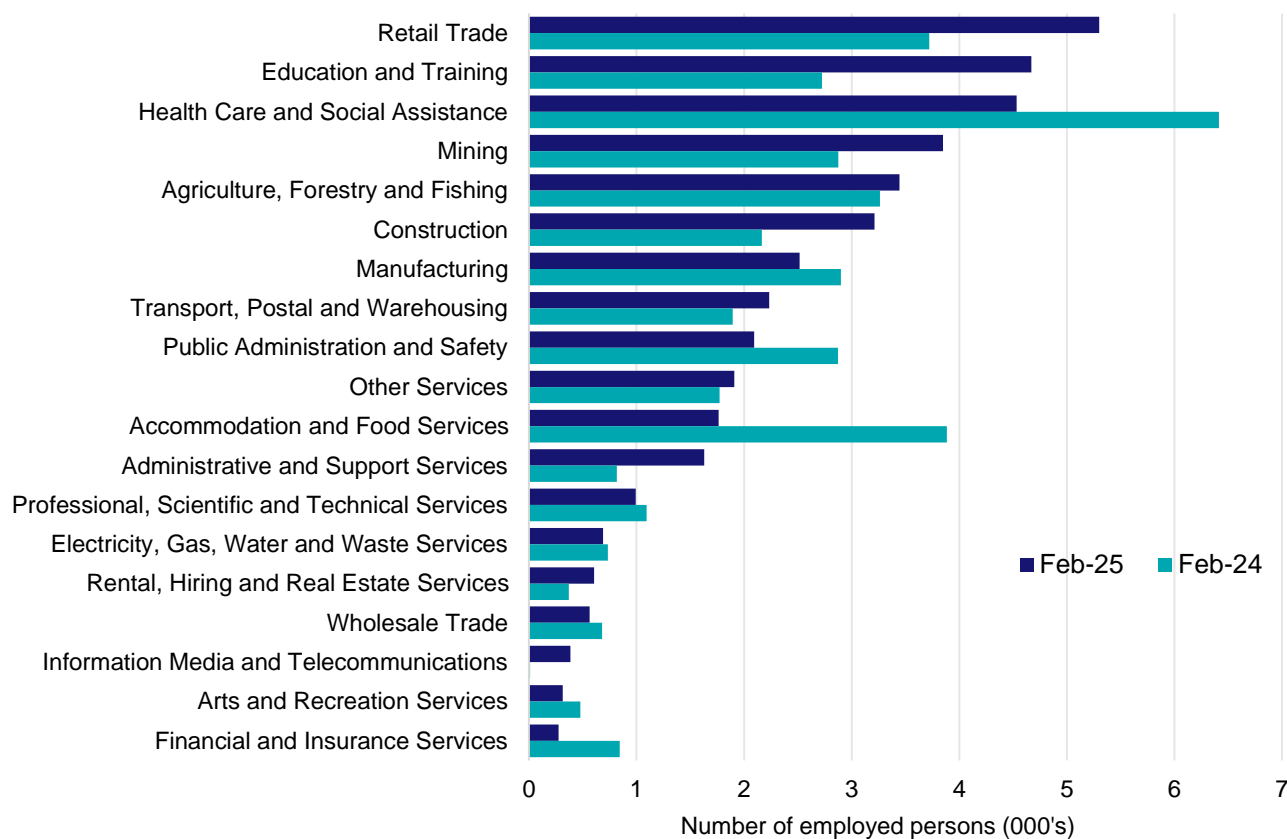
In February 2025, there were around 41,000 people employed in the North West Country SA Employment Region. The 5 largest employing industries in the region were Retail Trade, Education and Training, Health Care and Social Assistance, Mining, and Agriculture, Forestry and Fishing. Together these 5 industries accounted for 53% of employment in the region.

Over the year to February 2025, employment in:

- Retail Trade rose by 42.4% to stand at 5,300
- Education and Training rose by 71.5% to stand at 4,700
- Health Care and Social Assistance fell by 29.3% to stand at 4,500.

In Retail Trade in the North West Country SA Employment Region, 56% of workers were employed part-time; 51% were male; and the median age of the workforce was 35.

Employment by industry, February 2025 and February 2024



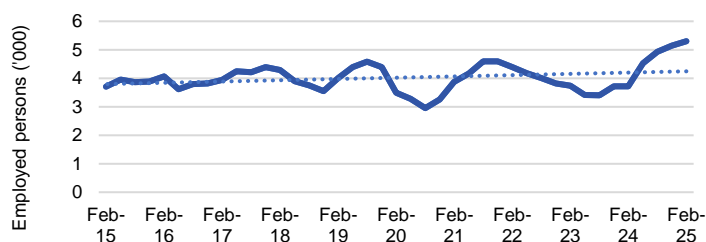
Source: ABS Labour Force Survey*, Detailed, four quarter averages, February 2025. Note that total employment for the region (four quarter averaged data) will not match data published in the Employment Region Labour Market dashboards (modelled estimates).

*ABS Labour Force Survey data are based on the South Australia - Outback SA4.

Notes: Data are the latest available. A high degree of caution should be exercised when interpreting data at the regional level, particularly in regards to percentage changes, given the volatility of the underlying data. For any enquiries related to the data in this report, please contact RegionalWorkforceAssessment@jobsandskills.gov.au

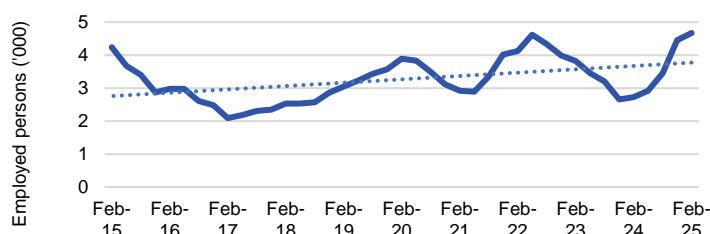
Five largest employing industries: key statistics

Retail Trade



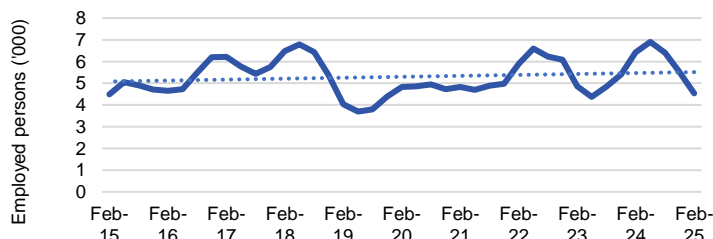
| | |
|---------------------------------|-------|
| Number employed (Feb-25): | 5,300 |
| 1 year employment change: | 42.4% |
| 5 year employment change: | 51.7% |
| 10 year employment change: | 42.8% |
| Youth share of employment: | 22.8% |
| Mature age share of employment: | 8.7% |

Education and Training



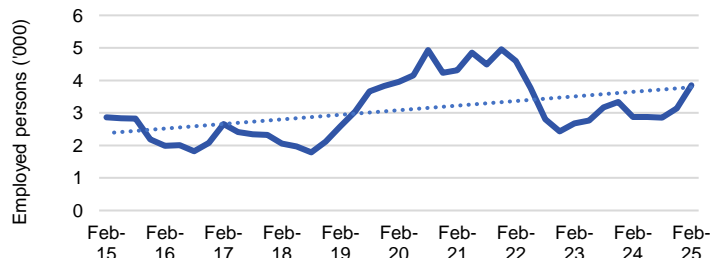
| | |
|---------------------------------|-------|
| Number employed (Feb-25): | 4,700 |
| 1 year employment change: | 71.5% |
| 5 year employment change: | 20.0% |
| 10 year employment change: | 10.1% |
| Youth share of employment: | 4.5% |
| Mature age share of employment: | 9.2% |

Health Care and Social Assistance



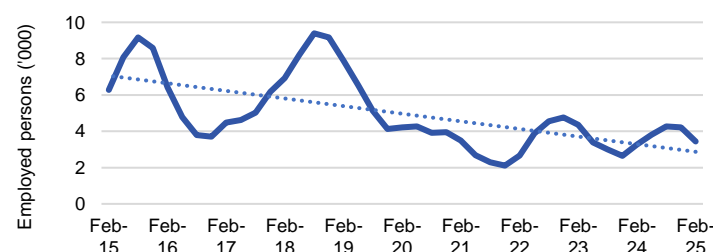
| | |
|---------------------------------|--------|
| Number employed (Feb-25): | 4,500 |
| 1 year employment change: | -29.3% |
| 5 year employment change: | -6.0% |
| 10 year employment change: | 0.9% |
| Youth share of employment: | 11.1% |
| Mature age share of employment: | 18.1% |

Mining



| | |
|---------------------------------|-------|
| Number employed (Feb-25): | 3,900 |
| 1 year employment change: | 33.8% |
| 5 year employment change: | -2.6% |
| 10 year employment change: | 34.5% |
| Youth share of employment: | 2.2% |
| Mature age share of employment: | 4.0% |

Agriculture, Forestry and Fishing



| | |
|---------------------------------|--------|
| Number employed (Feb-25): | 3,400 |
| 1 year employment change: | 5.5% |
| 5 year employment change: | -18.4% |
| 10 year employment change: | -45.2% |
| Youth share of employment: | 2.8% |
| Mature age share of employment: | 4.9% |

Source: ABS Labour Force Survey, Detailed, four quarter averages, February 2025, except youth and mature age data which are from the ABS Census of Population and Housing, 2021.

Notes: In each chart, the solid line is the level of employment and the dotted line is a simple linear trend line for the 10 year period. Given the volatility of the underlying data, employment estimates should be treated with a high degree of caution. Particular focus should be placed on the employment series over time to ascertain more reliable long-term growth trends.

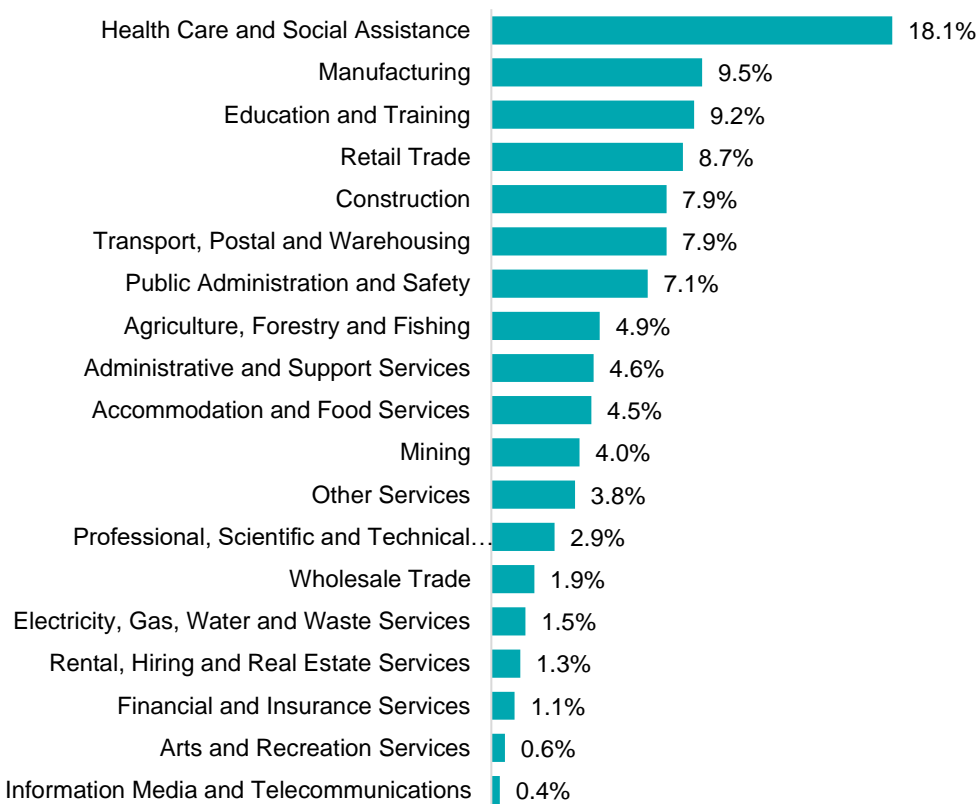
Employment characteristics by Industry

Which industries are youth (aged 15-24) employed in?



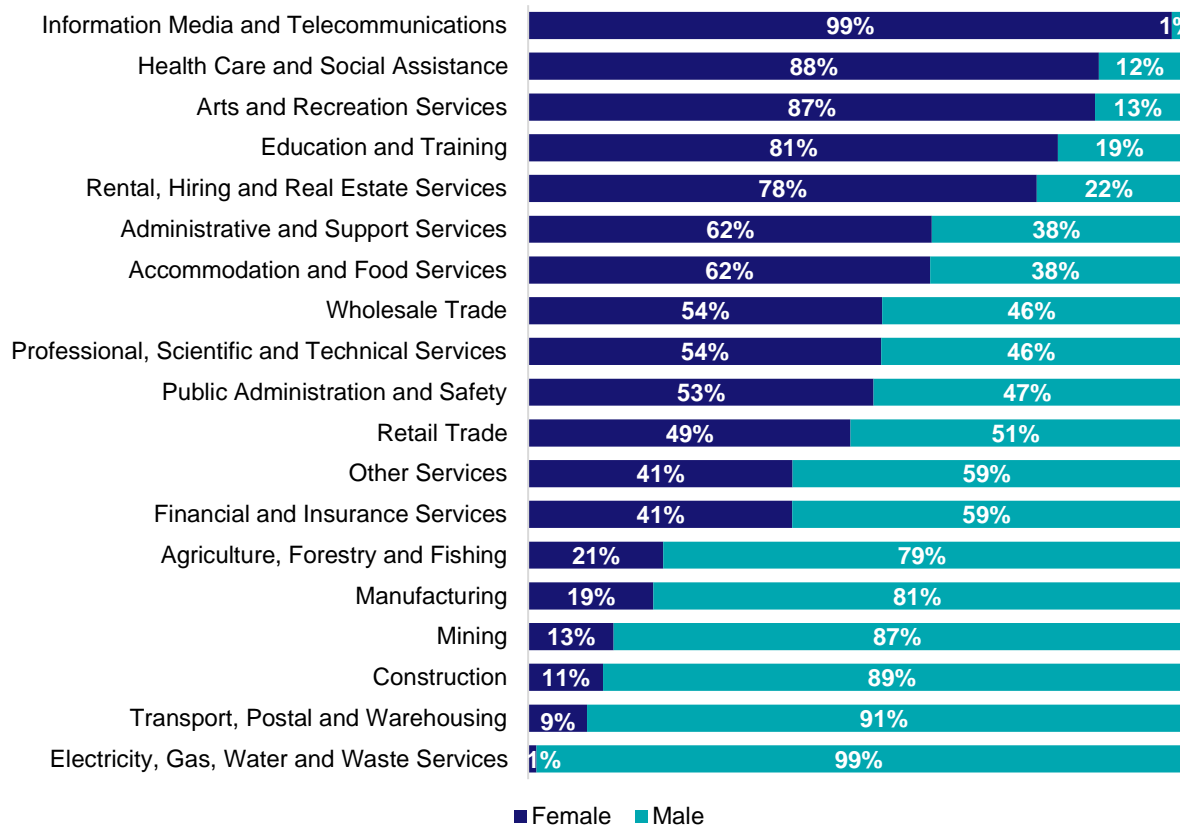
Source: ABS Census of Population and Housing, 2021.

Which industries are mature age persons (aged 55+) employed in?



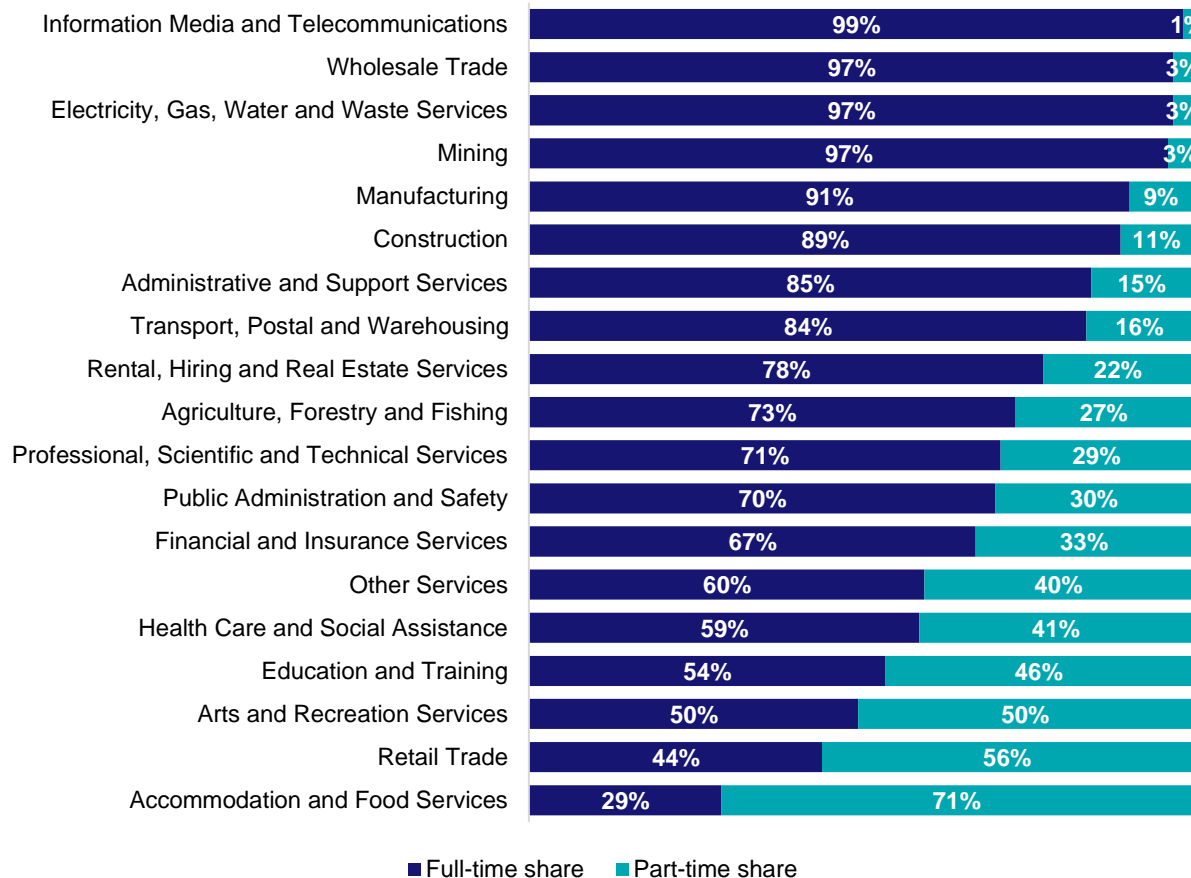
Source: ABS Census of Population and Housing, 2021. Note: SA2 level Census data have been aggregated to the Employment Region level.

Gender share by industry



Source: ABS Labour Force Survey, Detailed, four quarter averages, February 2025.

Full-time and part-time employment status by industry



Source: ABS Labour Force Survey, Detailed, four quarter averages, February 2025.

Appendix

Employment by industry, North West Country SA, February 2025

| Industry (in order of size) | Share of employment in the region Feb-25 (%) | Employed ('000) | | | Full-time share % | Part-time share % | Median age * |
|---|--|-----------------|-------------|-------------|-------------------|-------------------|--------------|
| | | Feb-25 | Feb-24 | Feb-20 | | | |
| Retail Trade | 12.9 | 5.3 | 3.7 | 3.5 | 44.3 | 55.7 | 35 |
| Education and Training | 11.4 | 4.7 | 2.7 | 3.9 | 53.8 | 46.2 | 43 |
| Health Care and Social Assistance | 11.1 | 4.5 | 6.4 | 4.8 | 58.9 | 41.1 | 43 |
| Mining | 9.4 | 3.9 | 2.9 | 4.0 | 96.5 | 3.5 | 41 |
| Agriculture, Forestry and Fishing | 8.4 | 3.4 | 3.3 | 4.2 | 73.4 | 26.6 | 41 |
| Construction | 7.8 | 3.2 | 2.2 | 3.0 | 89.4 | 10.6 | 40 |
| Manufacturing | 6.1 | 2.5 | 2.9 | 2.0 | 90.7 | 9.3 | 42 |
| Transport, Postal and Warehousing | 5.4 | 2.2 | 1.9 | 1.9 | 84.2 | 15.8 | 49 |
| Public Administration and Safety | 5.1 | 2.1 | 2.9 | 2.0 | 70.5 | 29.5 | 45 |
| Other Services | 4.7 | 1.9 | 1.8 | 2.0 | 59.7 | 40.3 | 38 |
| Accommodation and Food Services | 4.3 | 1.8 | 3.9 | 3.1 | 29.1 | 70.9 | 28 |
| Administrative and Support Services | 4.0 | 1.6 | 0.8 | 1.8 | 84.9 | 15.1 | 43 |
| Professional, Scientific and Technical Services | 2.4 | 1.0 | 1.1 | 1.0 | 71.2 | 28.8 | 41 |
| Electricity, Gas, Water and Waste Services | 1.7 | 0.7 | 0.7 | 0.5 | 97.3 | 2.7 | 44 |
| Rental, Hiring and Real Estate Services | 1.5 | 0.6 | 0.4 | 0.2 | 77.7 | 22.3 | 41 |
| Wholesale Trade | 1.4 | 0.6 | 0.7 | 0.9 | 97.3 | 2.7 | 44 |
| Information Media and Telecommunications | 0.9 | 0.4 | 0.0 | 0.2 | 98.8 | 1.2 | 43 |
| Arts and Recreation Services | 0.8 | 0.3 | 0.5 | 0.3 | 49.7 | 50.3 | 46 |
| Financial and Insurance Services | 0.7 | 0.3 | 0.8 | 0.3 | 67.5 | 32.5 | 36 |
| All industries | 100.0 | 41.0 | 39.5 | 39.4 | 69.4 | 30.6 | 41 |

Source: ABS Labour Force Survey, Detailed, four quarter averages, February 2025. *Median age is from the ABS Census of Population and Housing, 2021. Median age has been derived using aggregated SA2s for the Employment Region.

Note: Small cells should be viewed with caution due to small sample sizes and regional volatility.