



Australian Government



Jobs and Skills Australia

Industry profile

Queensland

Release date: 27 March 2025

Overview

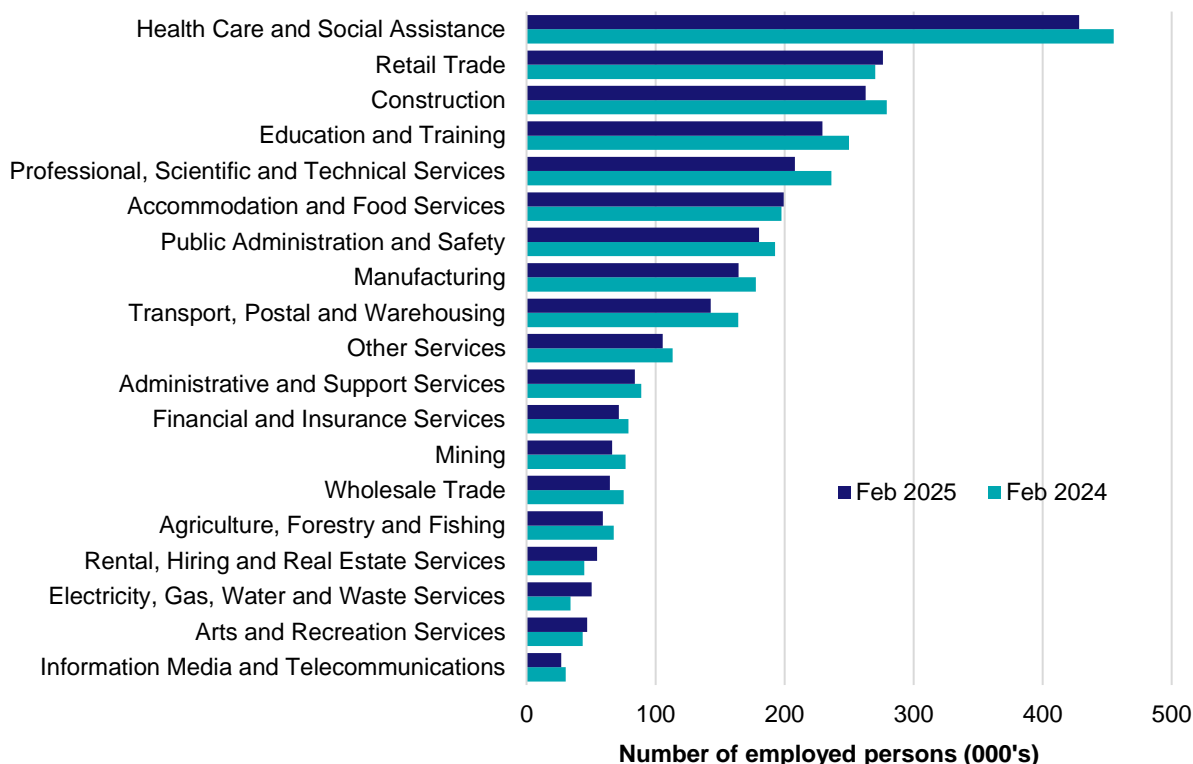
In February 2025, there were around 2,721,300 people employed in Queensland. The 5 largest employing industries in Queensland were Health Care and Social Assistance, Retail Trade, Construction, Education and Training and Professional, Scientific and Technical Services. Together these 5 industries accounted for 52% of all employment.

Over the year to February 2025, employment in:

- Health Care and Social Assistance fell by 5.9% to stand at 428,200
- Retail Trade rose by 2.2% to stand at 276,200
- Construction fell by 5.8% to stand at 262,900.

In Health Care and Social Assistance in Queensland, 56% of workers were employed full-time; 76% were Female; and the median age of the workforce was 42. Around 54% of employed persons in this industry were located in Greater Brisbane.

Employment by industry, February 2025 and February 2024

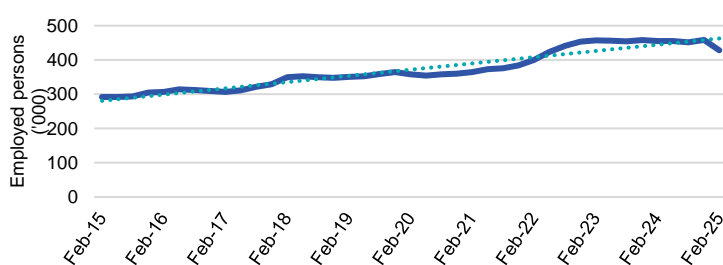


Source: ABS Labour Force Survey, Detailed, four quarter averages, February 2025. Note that total employment (four quarter averaged data) may not match data published in the Labour Market dashboards (6 month averaged data).

Note: For any enquiries related to the data in this report, contact RegionalWorkforceAssessment@jobsandskills.gov.au

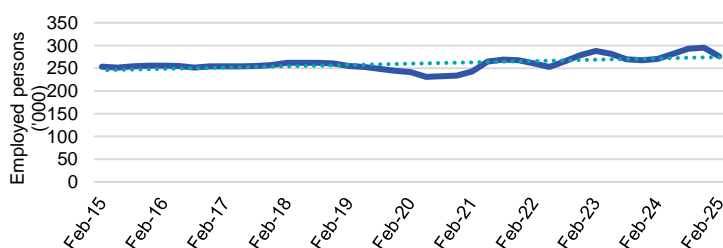
Five largest employing industries: key statistics

Health Care and Social Assistance



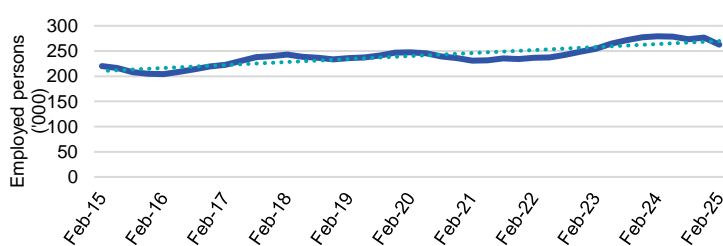
Number employed (Feb-25):	428,200
1 year employment change:	-5.9%
5 year employment change:	19.7%
10 year employment change:	46.7%
Youth share of employment:	10.6%
Mature age share of employment:	17.6%

Retail Trade



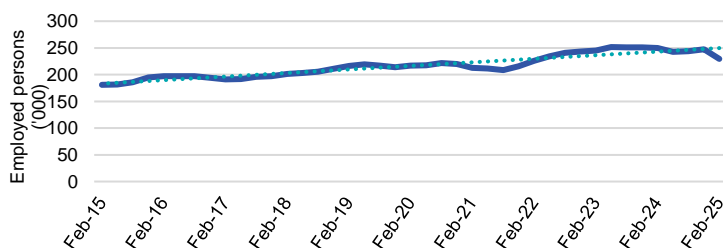
Number employed (Feb-25):	276,200
1 year employment change:	2.2%
5 year employment change:	14.3%
10 year employment change:	8.8%
Youth share of employment:	19.6%
Mature age share of employment:	7.7%

Construction



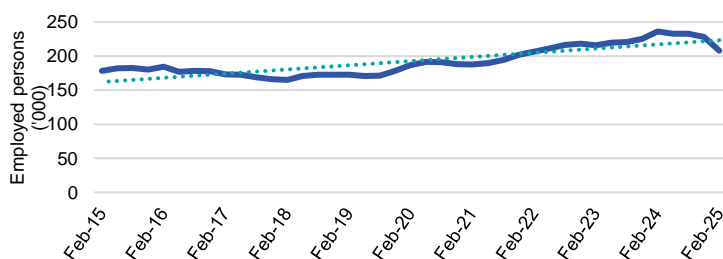
Number employed (Feb-25):	262,900
1 year employment change:	-5.8%
5 year employment change:	6.3%
10 year employment change:	19.4%
Youth share of employment:	8.7%
Mature age share of employment:	8.6%

Education and Training



Number employed (Feb-25):	229,400
1 year employment change:	-8.2%
5 year employment change:	5.9%
10 year employment change:	26.8%
Youth share of employment:	5.2%
Mature age share of employment:	10.6%

Professional, Scientific and Technical Services



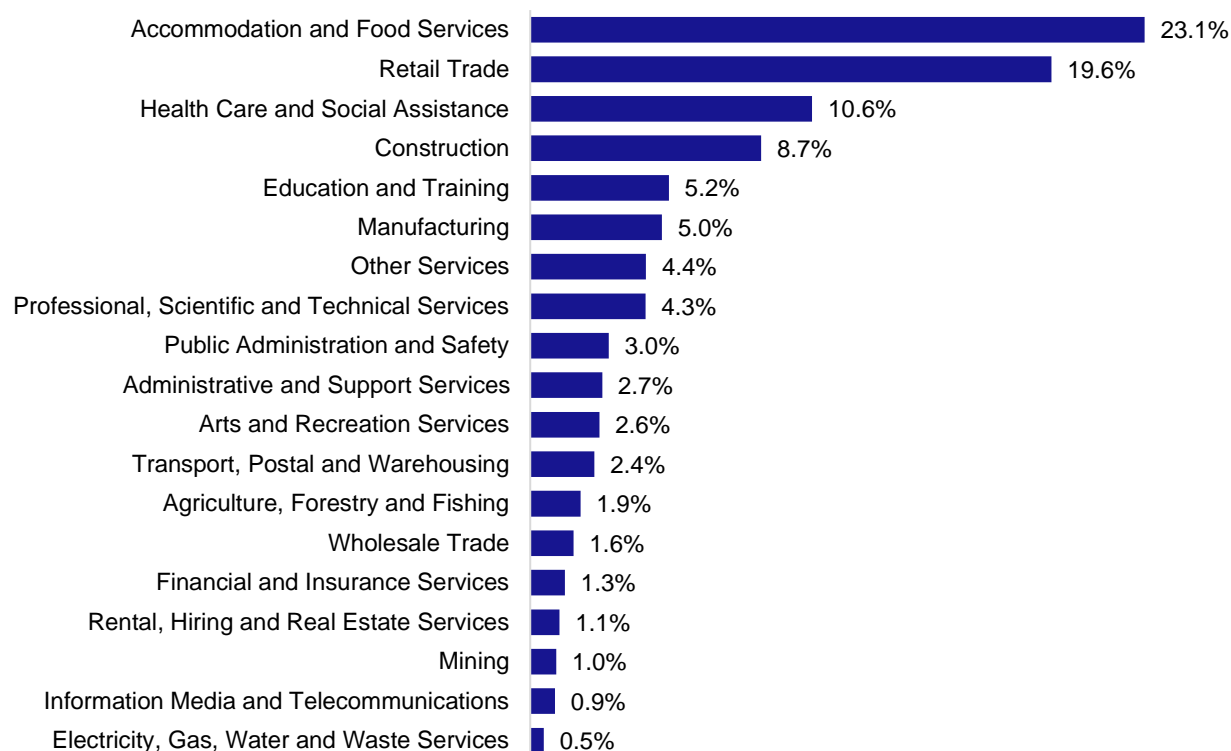
Number employed (Feb-25):	207,900
1 year employment change:	-12.0%
5 year employment change:	11.1%
10 year employment change:	16.5%
Youth share of employment:	4.3%
Mature age share of employment:	6.3%

Source: ABS Labour Force Survey, Detailed, four quarter averages, February 2025, except youth and mature age data which are from the ABS Census of Population and Housing, 2021.

Note: In each chart, the solid line is the level of employment and the dotted line is a simple linear trend line for the 10 year period.

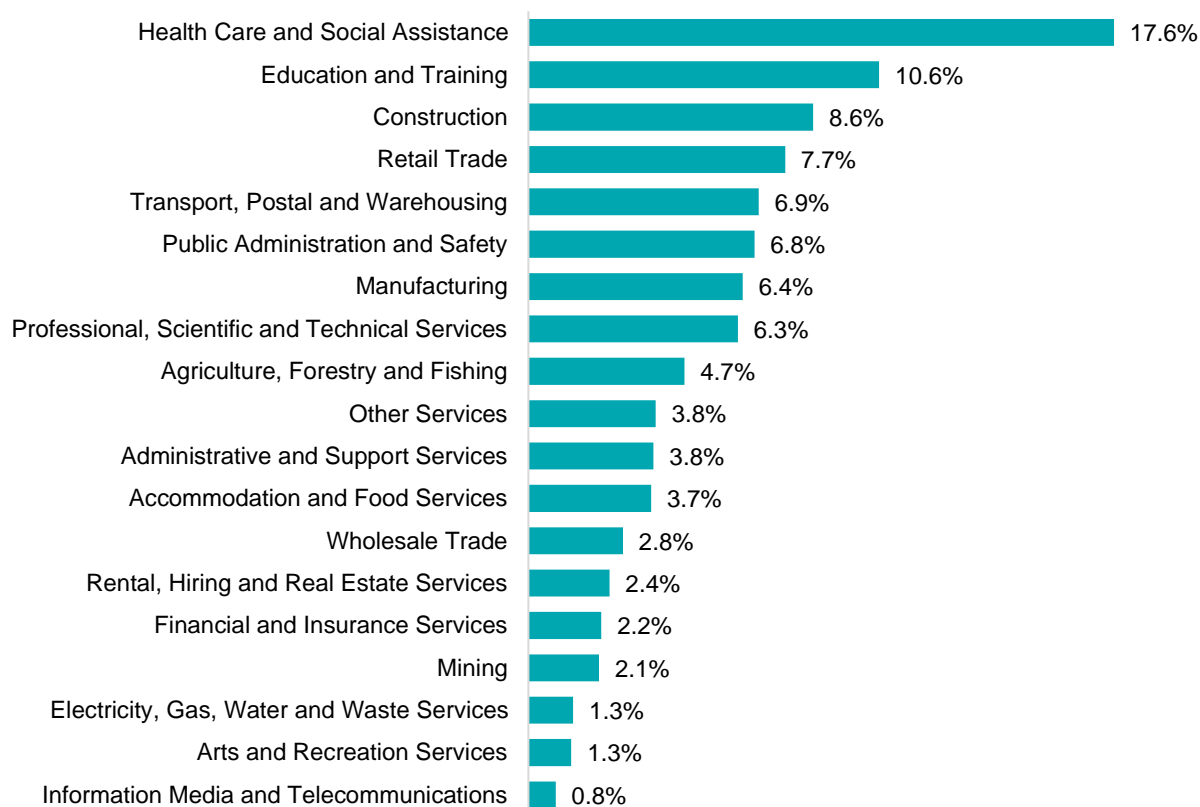
Employment characteristics by Industry

Which industries are youth (aged 15-24) employed in?



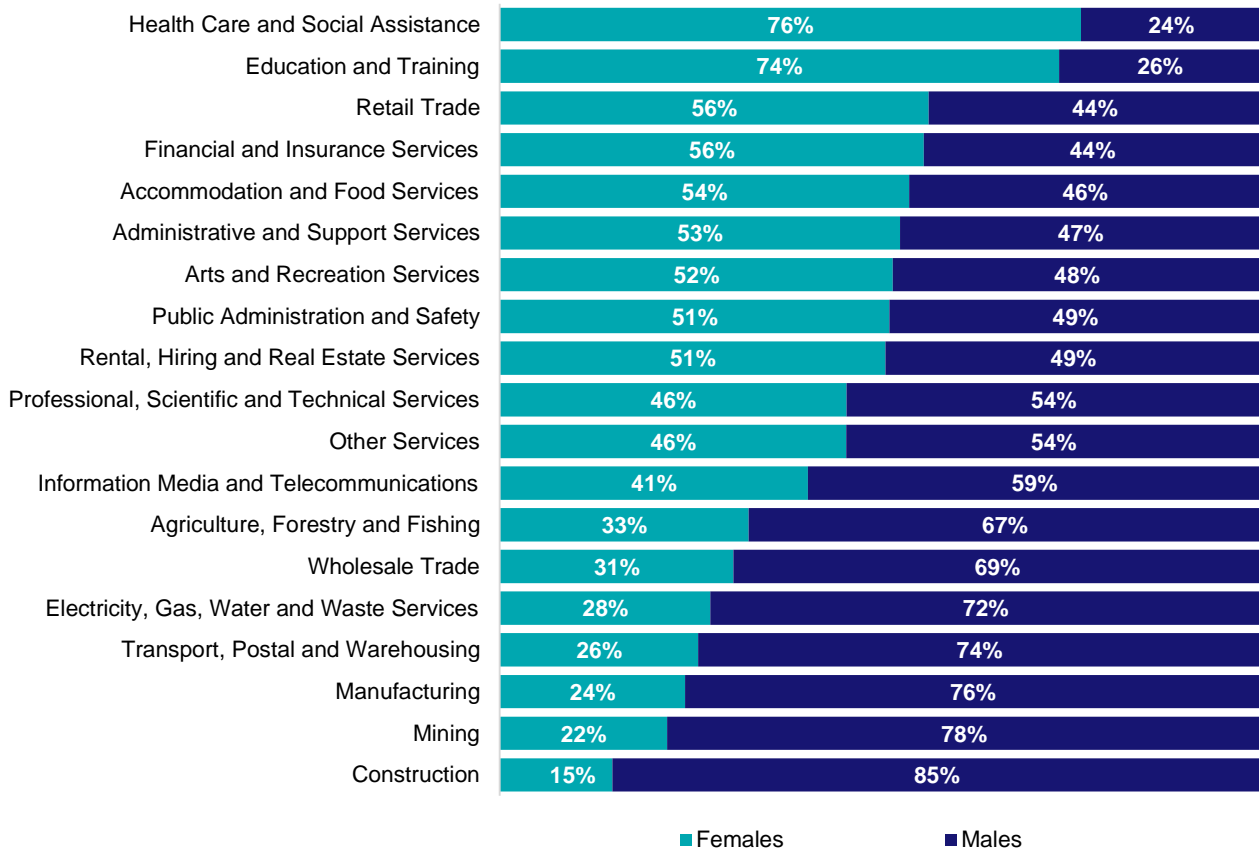
Source: ABS Census of Population and Housing, 2021.

Which industries are mature age persons (aged 55+) employed in?



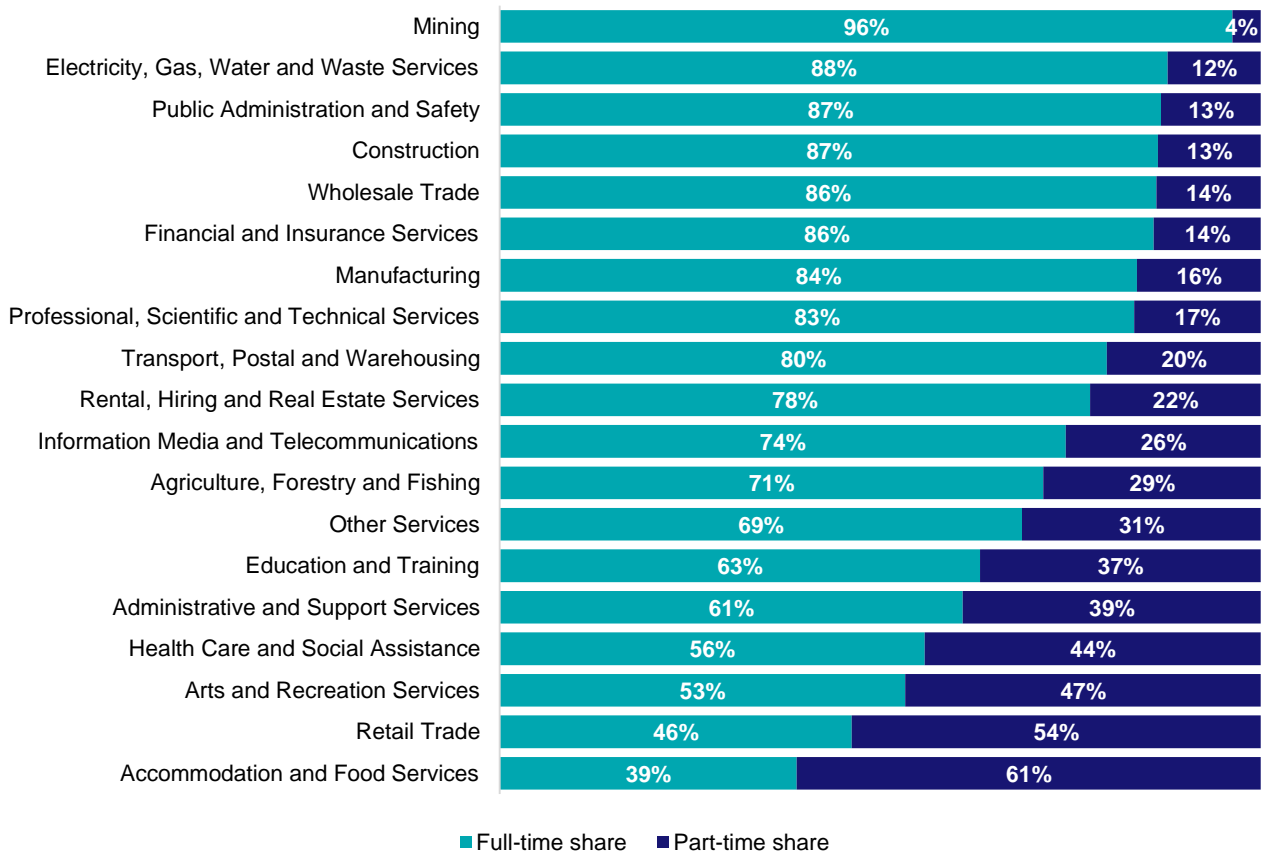
Source: ABS Census of Population and Housing, 2021.

Gender share by industry



Source: ABS Labour Force Survey, Detailed, four quarter averages, February 2025.

Full-time and part-time employment status by industry



Source: ABS Labour Force Survey, Detailed, four quarter averages, February 2025.

Appendix

Employment by industry, Queensland, February 2025

Industry (in order of size)	Share of emp't Feb-25 (%)	Share of emp't in Greater Brisbane (%)	Share of emp't in Rest of QLD (%)	Employed ('000)			1 year change		5 year change		Median age *
				Feb-25	Feb-24	Feb-20	('000)	%	('000)	%	
Health Care and Social Assistance	15.7	54.1	45.9	428.2	455.2	357.8	-26.9	-5.9	70.5	19.7	42
Retail Trade	10.1	56.8	43.2	276.2	270.4	241.6	5.8	2.2	34.6	14.3	33
Construction	9.7	53.1	46.9	262.9	279.2	247.2	-16.3	-5.8	15.7	6.3	39
Education and Training	8.4	54.7	45.3	229.4	249.8	216.7	-20.4	-8.2	12.8	5.9	44
Professional, Scientific and Technical Services	7.6	64.8	35.2	207.9	236.3	187.1	-28.4	-12.0	20.8	11.1	40
Accommodation and Food Services	7.3	54.6	45.4	199.3	197.6	201.2	1.6	0.8	-2.0	-1.0	25
Public Administration and Safety	6.6	63.4	36.6	180.2	192.6	160.7	-12.3	-6.4	19.6	12.2	44
Manufacturing	6.0	55.4	44.6	164.2	177.8	165.3	-13.6	-7.7	-1.1	-0.7	42
Transport, Postal and Warehousing	5.3	64.9	35.1	142.9	164.0	135.0	-21.2	-12.9	7.9	5.8	45
Other Services	3.9	54.6	45.4	105.4	113.2	109.5	-7.7	-6.8	-4.1	-3.7	39
Administrative and Support Services	3.1	53.5	46.5	84.0	89.0	92.4	-5.0	-5.6	-8.5	-9.2	41
Financial and Insurance Services	2.6	66.1	33.9	71.6	79.1	60.5	-7.5	-9.5	11.1	18.3	41
Mining	2.4	36.3	63.7	66.3	76.7	70.8	-10.3	-13.5	-4.4	-6.3	42
Wholesale Trade	2.4	60.3	39.7	64.6	75.4	72.5	-10.8	-14.3	-7.9	-10.9	43
Agriculture, Forestry and Fishing	2.2	20.2	79.8	59.2	67.7	70.4	-8.4	-12.5	-11.2	-15.9	47
Rental, Hiring and Real Estate Services	2.0	61.4	38.6	54.6	44.7	50.6	10.0	22.4	4.1	8.1	44
Electricity, Gas, Water and Waste Services	1.9	52.3	47.7	50.4	34.2	30.2	16.2	47.3	20.2	67.0	44
Arts and Recreation Services	1.7	51.8	48.2	47.0	43.4	50.6	3.5	8.1	-3.6	-7.1	36
Information Media and Telecommunications	1.0	60.4	39.6	26.9	30.4	30.3	-3.5	-11.6	-3.4	-11.2	39
All Industries	100.0	55.9	44.1	2721.3	2876.7	2550.3	-155.3	-5.4	171.0	6.7	40

Source: ABS Labour Force Survey, Detailed, February 2025, four quarter averages. *Median age is from the ABS Census of Population and Housing, 2021.

Employment Region Industry profile

Brisbane - South East Employment Region

Release date: 27 March 2025

Overview

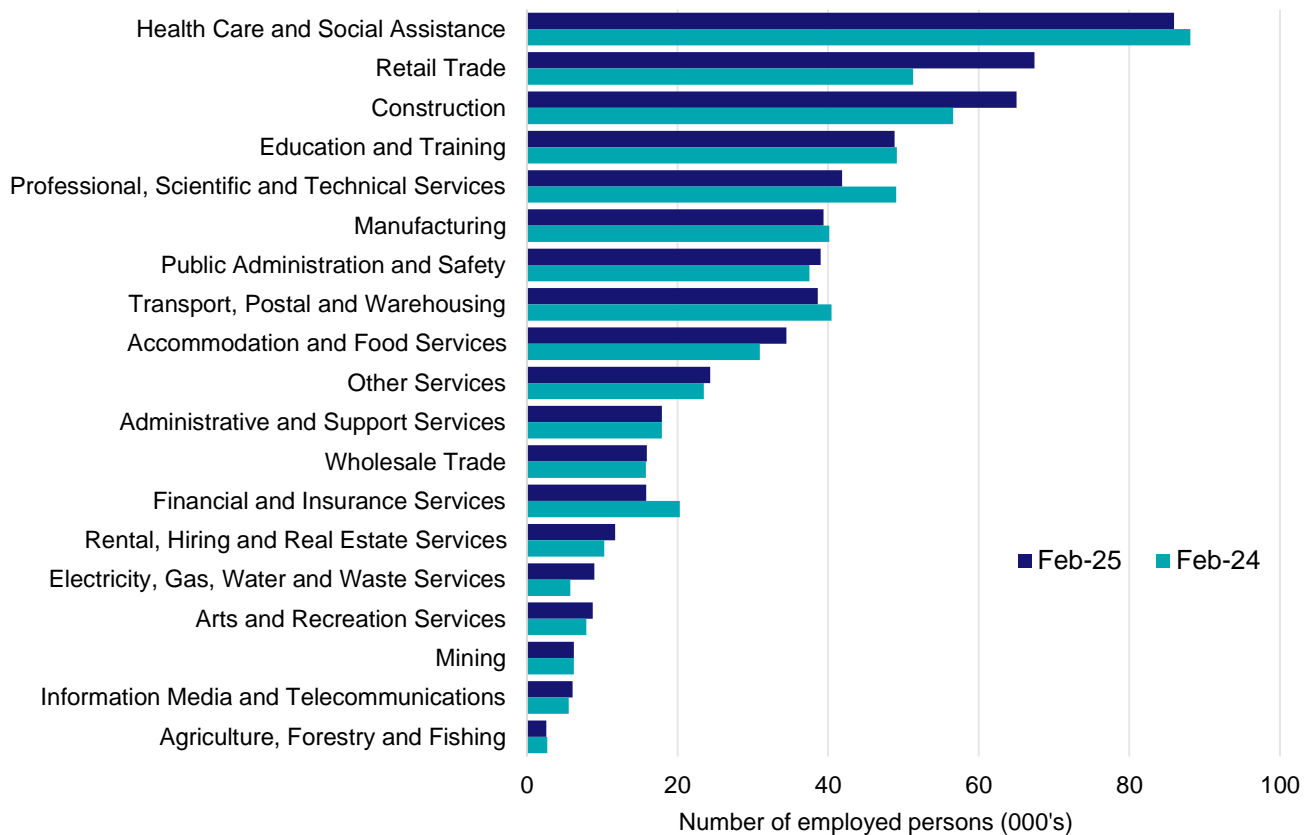
In February 2025, there were around 578,900 people employed in the Brisbane - South East Employment Region. The 5 largest employing industries in the region were Health Care and Social Assistance, Retail Trade, Construction, Education and Training, and Professional, Scientific and Technical Services. Together these 5 industries accounted for 53% of employment in the region.

Over the year to February 2025, employment in:

- Health Care and Social Assistance fell by 2.4% to stand at 85,900
- Retail Trade rose by 31.4% to stand at 67,400
- Construction rose by 14.9% to stand at 65,000.

In Health Care and Social Assistance in the Brisbane - South East Employment Region, 55% of workers were employed full-time; 76% were female; and the median age of the workforce was 40.

Employment by industry, February 2025 and February 2024



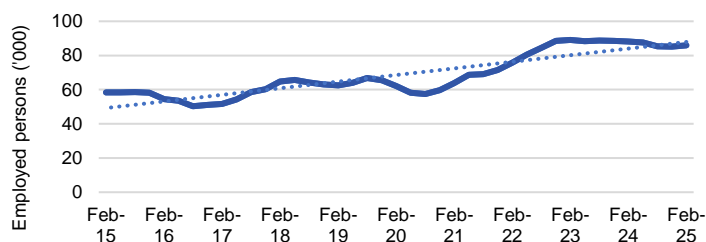
Source: ABS Labour Force Survey*, Detailed, four quarter averages, February 2025. Note that total employment for the region (four quarter averaged data) will not match data published in the Employment Region Labour Market dashboards (modelled estimates).

*ABS Labour Force Survey data are based on the combined SA4s of Brisbane - East; Brisbane - South and Logan - Beaudesert .

Notes: Data are the latest available. A high degree of caution should be exercised when interpreting data at the regional level, particularly in regards to percentage changes, given the volatility of the underlying data. For any enquiries related to the data in this report, please contact RegionalWorkforceAssessment@jobsandskills.gov.au

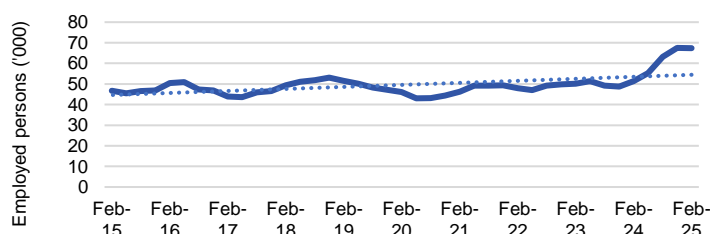
Five largest employing industries: key statistics

Health Care and Social Assistance



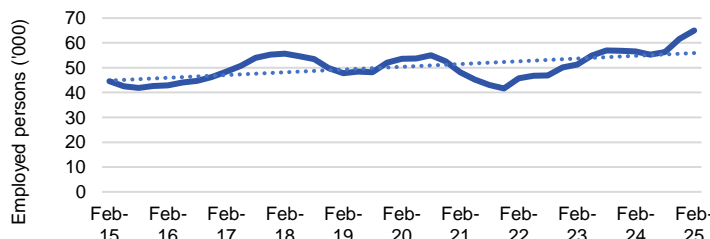
Number employed (Feb-25):	85,900
1 year employment change:	-2.4%
5 year employment change:	38.4%
10 year employment change:	47.2%
Youth share of employment:	11.1%
Mature age share of employment:	17.0%

Retail Trade



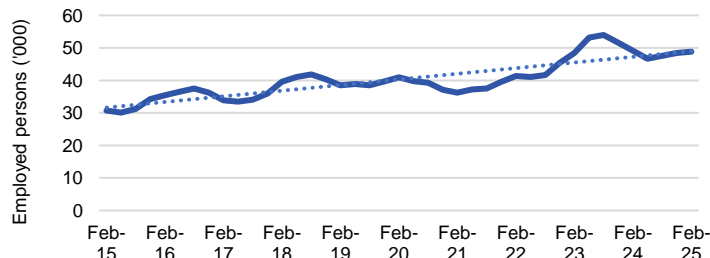
Number employed (Feb-25):	67,400
1 year employment change:	31.4%
5 year employment change:	46.1%
10 year employment change:	44.5%
Youth share of employment:	20.0%
Mature age share of employment:	7.7%

Construction



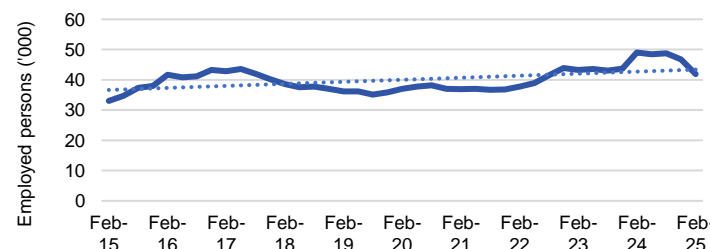
Number employed (Feb-25):	65,000
1 year employment change:	14.9%
5 year employment change:	21.1%
10 year employment change:	45.7%
Youth share of employment:	9.5%
Mature age share of employment:	9.2%

Education and Training



Number employed (Feb-25):	48,800
1 year employment change:	-0.7%
5 year employment change:	19.2%
10 year employment change:	59.1%
Youth share of employment:	5.8%
Mature age share of employment:	11.1%

Professional, Scientific and Technical Services



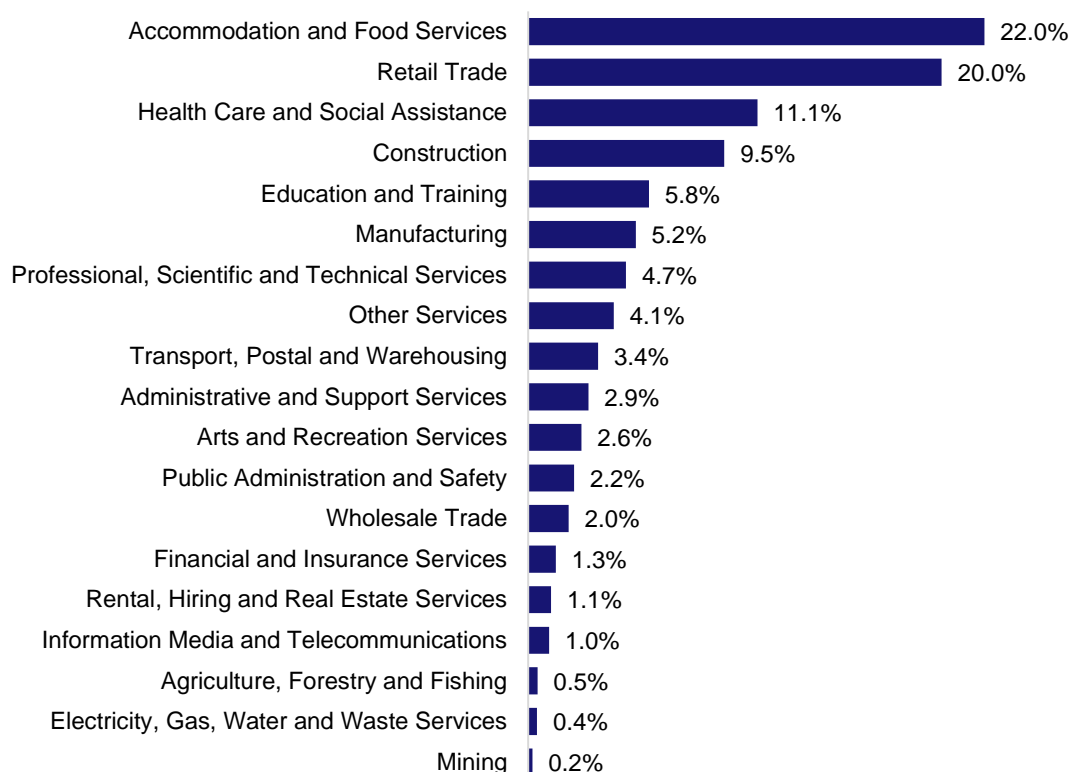
Number employed (Feb-25):	41,900
1 year employment change:	-14.6%
5 year employment change:	13.3%
10 year employment change:	26.7%
Youth share of employment:	4.7%
Mature age share of employment:	6.6%

Source: ABS Labour Force Survey, Detailed, four quarter averages, February 2025, except youth and mature age data which are from the ABS Census of Population and Housing, 2021.

Notes: In each chart, the solid line is the level of employment and the dotted line is a simple linear trend line for the 10 year period. Given the volatility of the underlying data, employment estimates should be treated with a high degree of caution. Particular focus should be placed on the employment series over time to ascertain more reliable long-term growth trends.

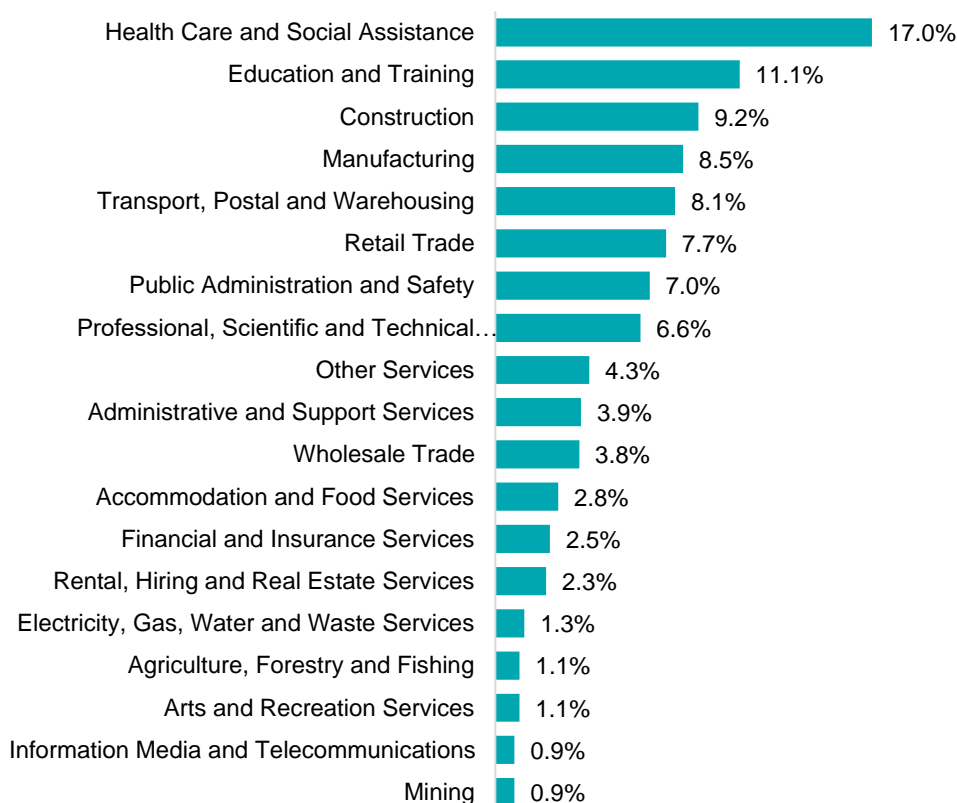
Employment characteristics by Industry

Which industries are youth (aged 15-24) employed in?



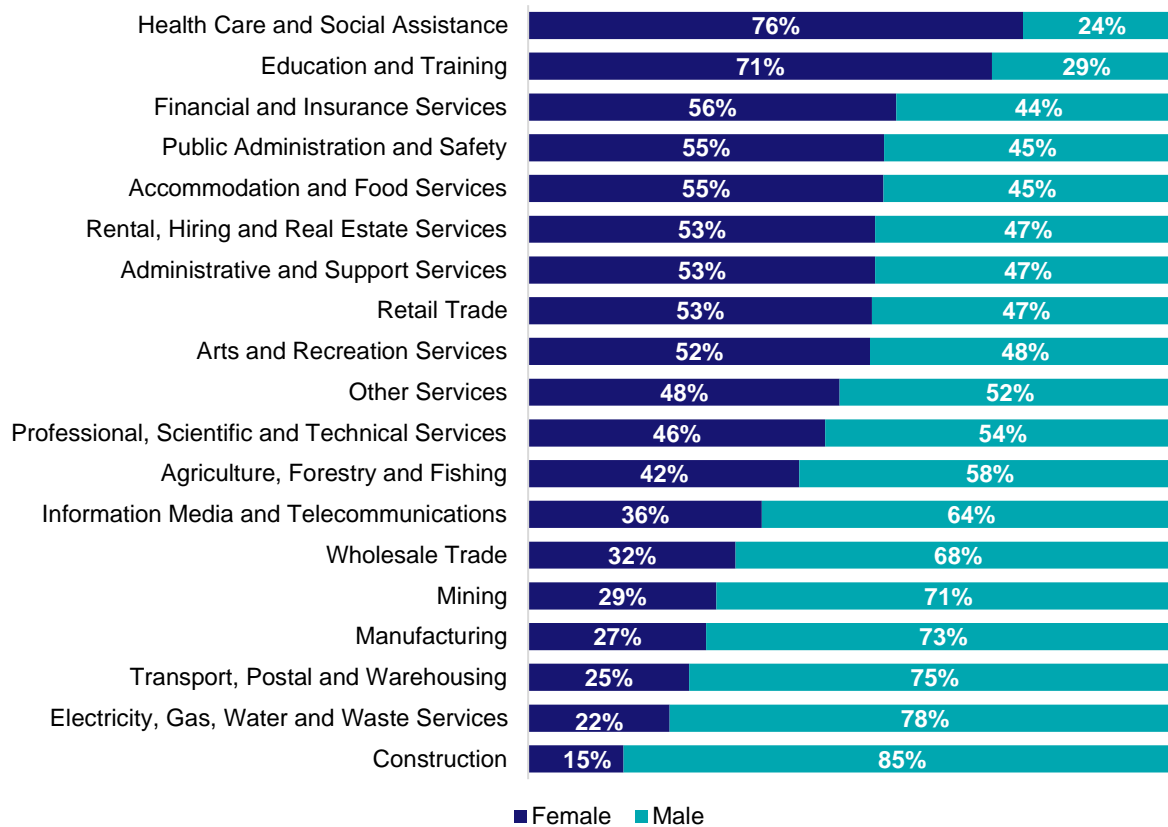
Source: ABS Census of Population and Housing, 2021.

Which industries are mature age persons (aged 55+) employed in?



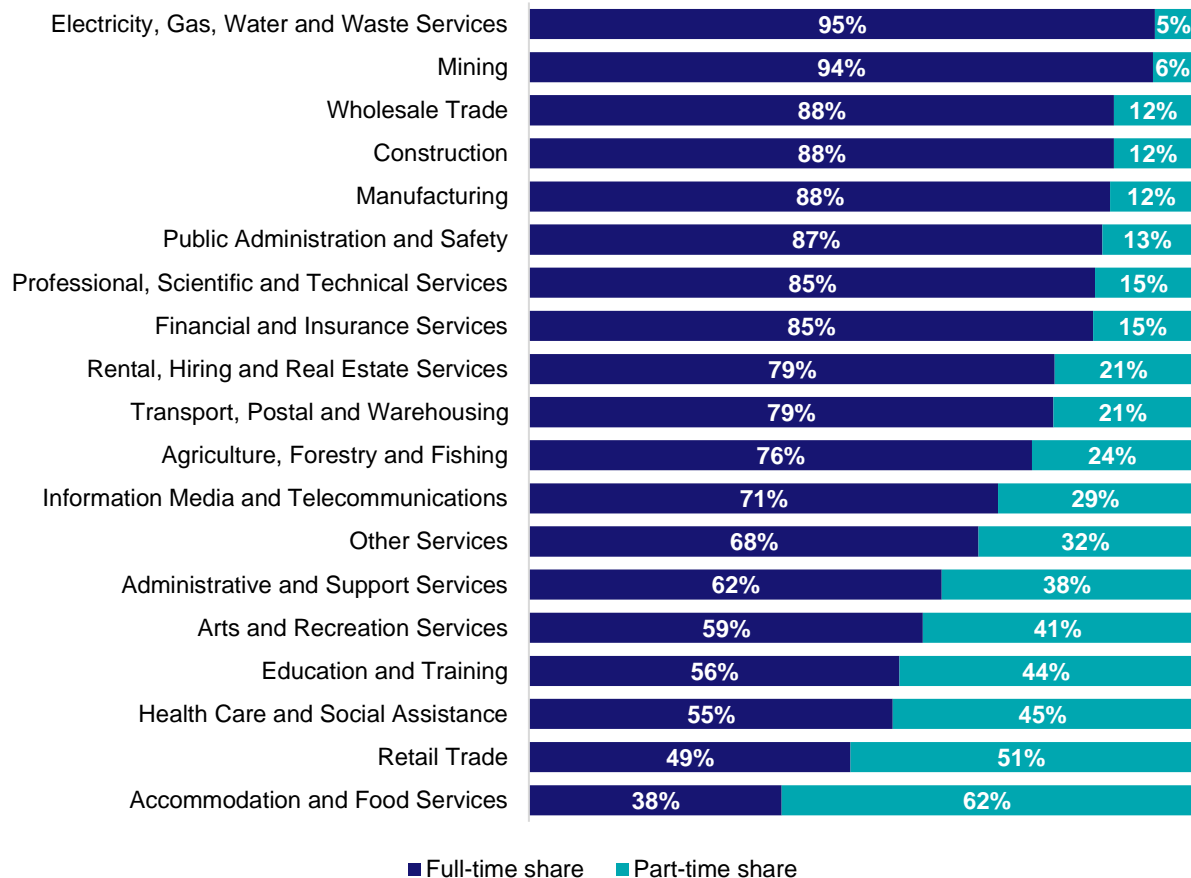
Source: ABS Census of Population and Housing, 2021. Note: SA2 level Census data have been aggregated to the Employment Region level.

Gender share by industry



Source: ABS Labour Force Survey, Detailed, four quarter averages, February 2025.

Full-time and part-time employment status by industry



Source: ABS Labour Force Survey, Detailed, four quarter averages, February 2025.

Appendix

Employment by industry, Brisbane - South East, February 2025

Industry (in order of size)	Share of employment in the region Feb-25 (%)	Employed ('000)			Full-time share %	Part-time share %	Median age *
		Feb-25	Feb-24	Feb-20			
Health Care and Social Assistance	14.8	85.9	88.1	62.1	54.9	45.1	40
Retail Trade	11.6	67.4	51.3	46.1	48.5	51.5	32
Construction	11.2	65.0	56.6	53.7	88.3	11.7	38
Education and Training	8.4	48.8	49.1	41.0	56.0	44.0	43
Professional, Scientific and Technical Services	7.2	41.9	49.0	37.0	85.5	14.5	39
Manufacturing	6.8	39.4	40.1	37.3	87.8	12.2	42
Public Administration and Safety	6.7	39.0	37.5	33.6	86.6	13.4	44
Transport, Postal and Warehousing	6.7	38.6	40.5	32.1	79.2	20.8	43
Accommodation and Food Services	6.0	34.5	30.9	35.9	38.2	61.8	23
Other Services	4.2	24.4	23.5	21.8	67.9	32.1	39
Administrative and Support Services	3.1	17.9	17.9	19.0	62.3	37.7	40
Wholesale Trade	2.8	15.9	15.8	14.6	88.3	11.7	43
Financial and Insurance Services	2.7	15.8	20.3	11.8	85.2	14.8	40
Rental, Hiring and Real Estate Services	2.0	11.7	10.3	10.0	79.4	20.6	40
Electricity, Gas, Water and Waste Services	1.5	8.9	5.7	6.0	94.5	5.5	43
Arts and Recreation Services	1.5	8.7	7.9	8.0	59.5	40.5	32
Mining	1.1	6.2	6.3	5.7	94.2	5.8	41
Information Media and Telecommunications	1.0	6.0	5.6	6.6	70.9	29.1	39
Agriculture, Forestry and Fishing	0.4	2.6	2.7	5.5	75.9	24.1	46
All industries	100.0	578.9	559.2	487.8	69.6	30.4	39

Source: ABS Labour Force Survey, Detailed, four quarter averages, February 2025. *Median age is from the ABS Census of Population and Housing, 2021. Median age has been derived using aggregated SA2s for the Employment Region.

Note: Small cells should be viewed with caution due to small sample sizes and regional volatility.



Employment Region Industry profile

Darling Downs Employment Region

Release date: 27 March 2025

Overview

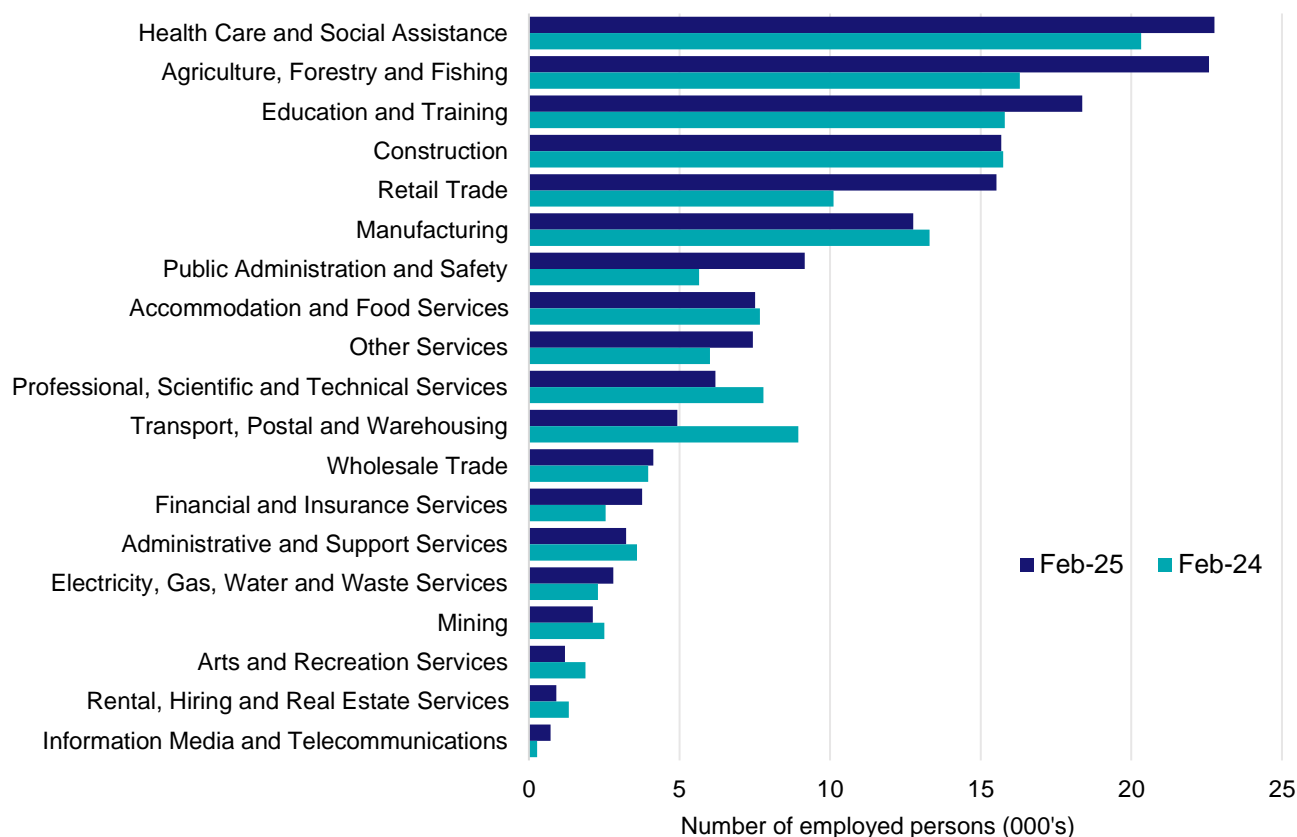
In February 2025, there were around 161,700 people employed in the Darling Downs Employment Region. The 5 largest employing industries in the region were Health Care and Social Assistance, Agriculture, Forestry and Fishing, Education and Training, Construction, and Retail Trade. Together these 5 industries accounted for 59% of employment in the region.

Over the year to February 2025, employment in:

- Health Care and Social Assistance rose by 12.0% to stand at 22,800
- Agriculture, Forestry and Fishing rose by 38.6% to stand at 22,600
- Education and Training rose by 16.2% to stand at 18,400.

In Health Care and Social Assistance in the Darling Downs Employment Region, 61% of workers were employed full-time; 74% were female; and the median age of the workforce was 42.

Employment by industry, February 2025 and February 2024



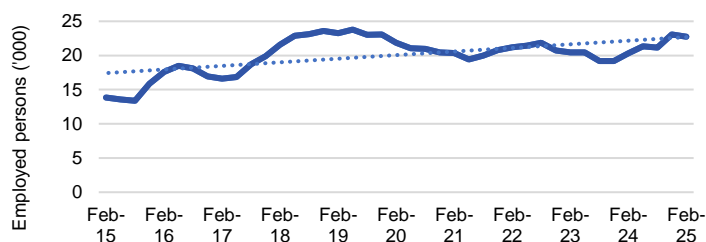
Source: ABS Labour Force Survey*, Detailed, four quarter averages, February 2025. Note that total employment for the region (four quarter averaged data) will not match data published in the Employment Region Labour Market dashboards (modelled estimates).

*ABS Labour Force Survey data are based on the combined SA4s of Darling Downs - Maranoa; and Toowoomba.

Notes: Data are the latest available. A high degree of caution should be exercised when interpreting data at the regional level, particularly in regards to percentage changes, given the volatility of the underlying data. For any enquiries related to the data in this report, please contact RegionalWorkforceAssessment@jobsandskills.gov.au

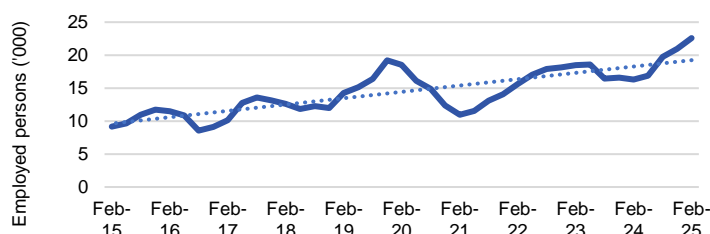
Five largest employing industries: key statistics

Health Care and Social Assistance



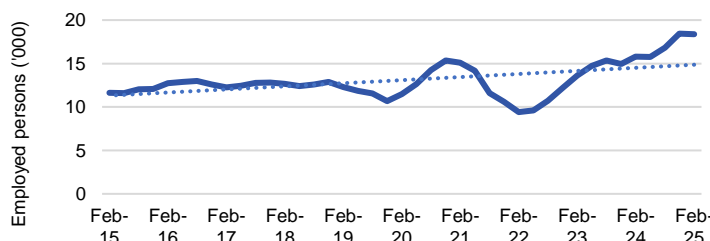
Number employed (Feb-25):	22,800
1 year employment change:	12.0%
5 year employment change:	4.0%
10 year employment change:	64.6%
Youth share of employment:	11.7%
Mature age share of employment:	16.6%

Agriculture, Forestry and Fishing



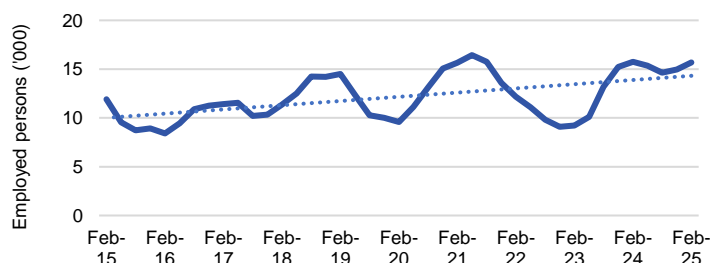
Number employed (Feb-25):	22,600
1 year employment change:	38.6%
5 year employment change:	21.8%
10 year employment change:	146.8%
Youth share of employment:	7.1%
Mature age share of employment:	17.5%

Education and Training



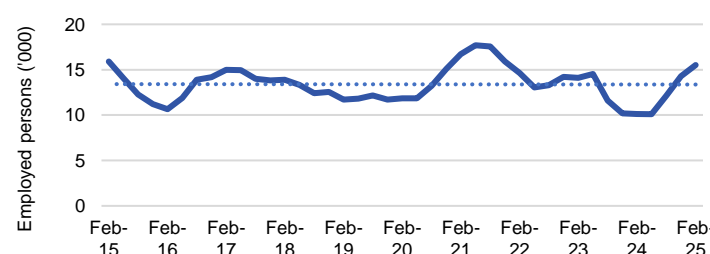
Number employed (Feb-25):	18,400
1 year employment change:	16.2%
5 year employment change:	60.0%
10 year employment change:	57.9%
Youth share of employment:	5.4%
Mature age share of employment:	11.2%

Construction



Number employed (Feb-25):	15,700
1 year employment change:	-0.4%
5 year employment change:	63.7%
10 year employment change:	31.6%
Youth share of employment:	9.5%
Mature age share of employment:	7.1%

Retail Trade



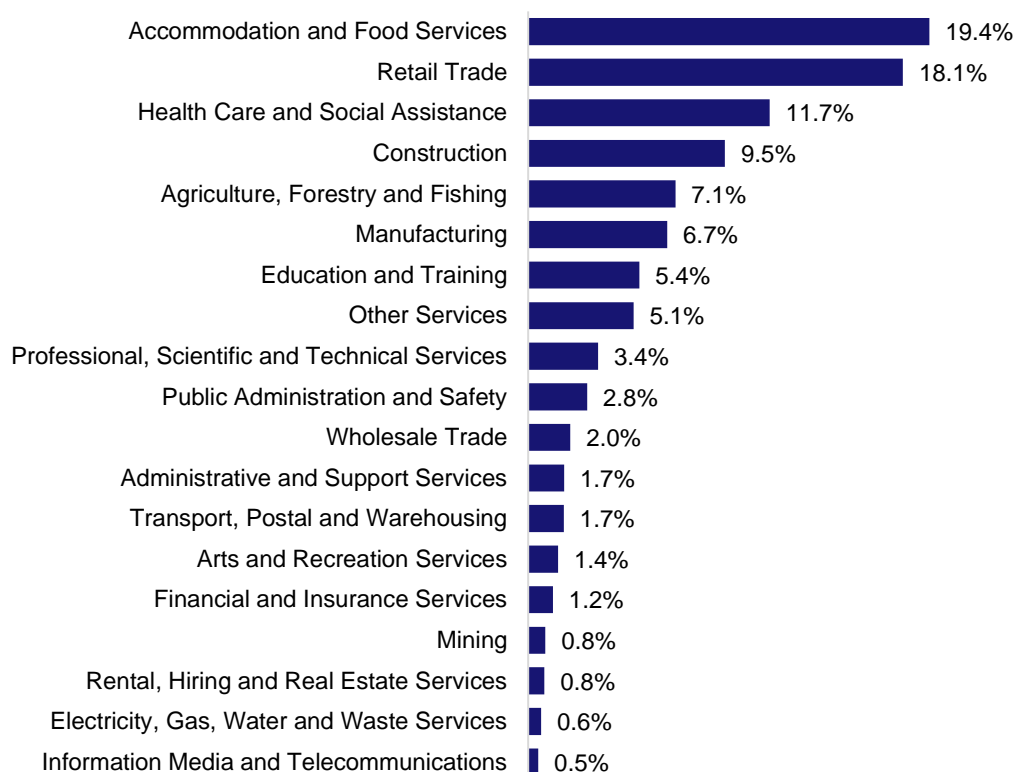
Number employed (Feb-25):	15,500
1 year employment change:	53.5%
5 year employment change:	31.0%
10 year employment change:	-2.4%
Youth share of employment:	18.1%
Mature age share of employment:	7.3%

Source: ABS Labour Force Survey, Detailed, four quarter averages, February 2025, except youth and mature age data which are from the ABS Census of Population and Housing, 2021.

Notes: In each chart, the solid line is the level of employment and the dotted line is a simple linear trend line for the 10 year period. Given the volatility of the underlying data, employment estimates should be treated with a high degree of caution. Particular focus should be placed on the employment series over time to ascertain more reliable long-term growth trends.

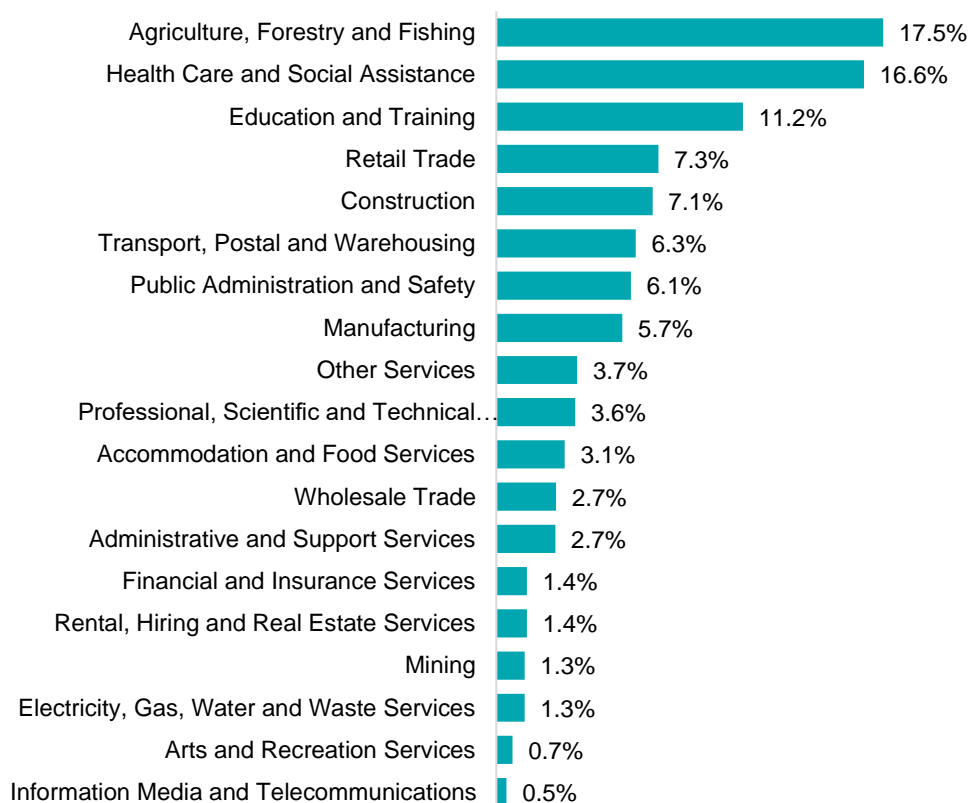
Employment characteristics by Industry

Which industries are youth (aged 15-24) employed in?



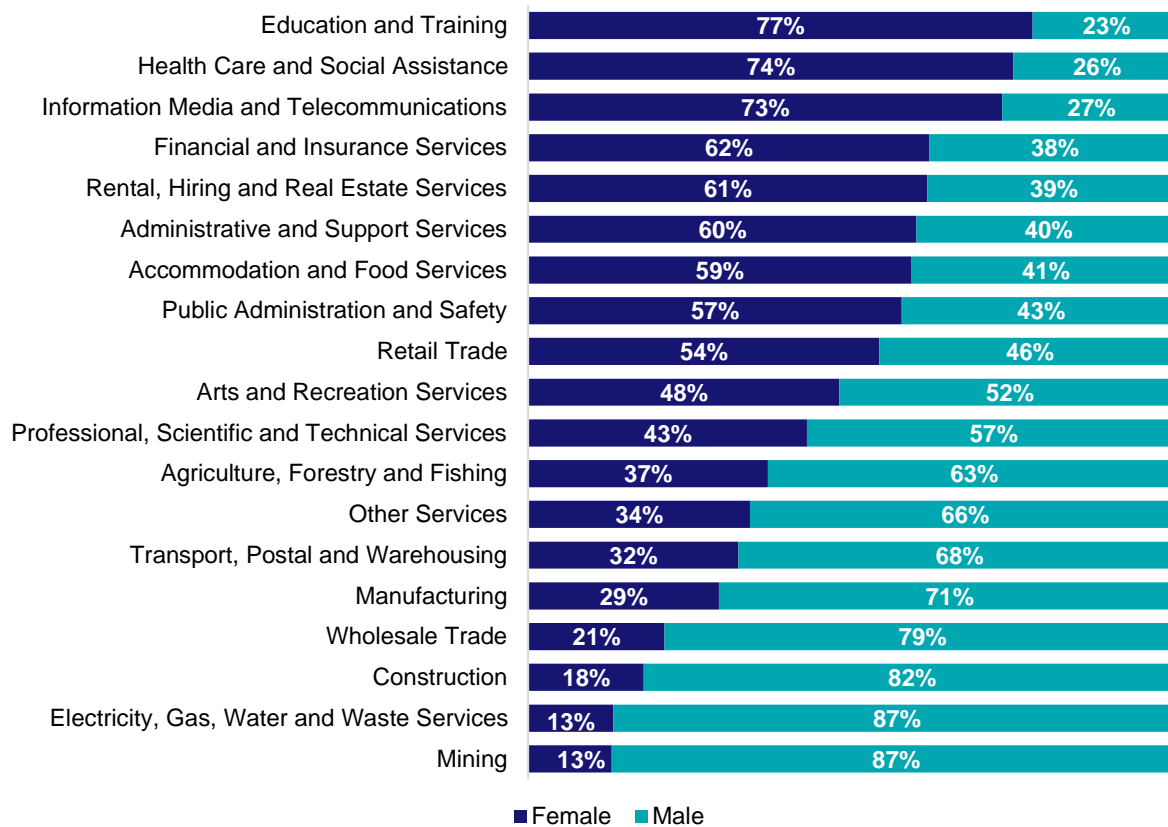
Source: ABS Census of Population and Housing, 2021.

Which industries are mature age persons (aged 55+) employed in?



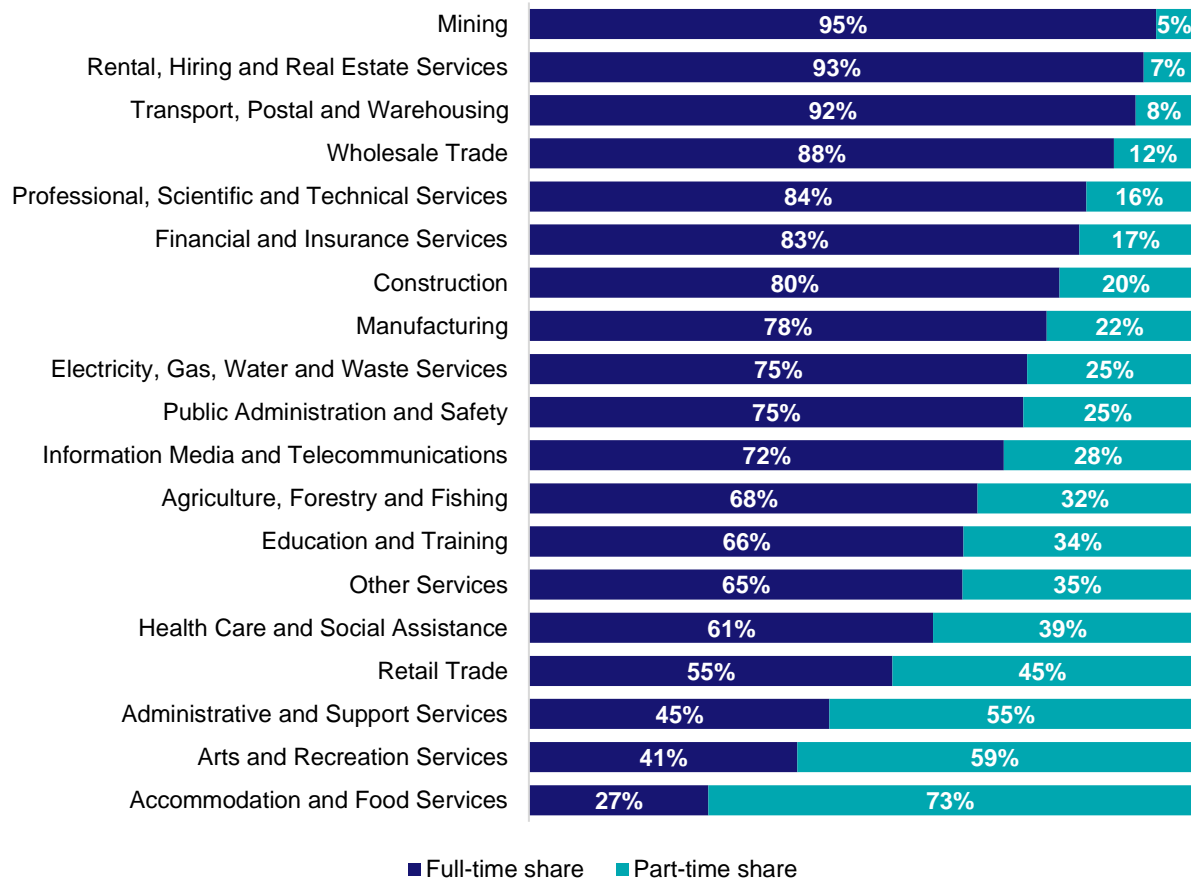
Source: ABS Census of Population and Housing, 2021. Note: SA2 level Census data have been aggregated to the Employment Region level.

Gender share by industry



Source: ABS Labour Force Survey, Detailed, four quarter averages, February 2025.

Full-time and part-time employment status by industry



Source: ABS Labour Force Survey, Detailed, four quarter averages, February 2025.

Appendix

Employment by industry, Darling Downs, February 2025

Industry (in order of size)	Share of employment in the region Feb-25 (%)	Employed ('000)			Full-time share %	Part-time share %	Median age *
		Feb-25	Feb-24	Feb-20			
Health Care and Social Assistance	14.1	22.8	20.3	21.9	61.0	39.0	42
Agriculture, Forestry and Fishing	14.0	22.6	16.3	18.5	67.8	32.2	48
Education and Training	11.4	18.4	15.8	11.5	65.6	34.4	45
Construction	9.7	15.7	15.7	9.6	80.1	19.9	38
Retail Trade	9.6	15.5	10.1	11.8	54.9	45.1	35
Manufacturing	7.9	12.8	13.3	9.4	78.2	21.8	39
Public Administration and Safety	5.7	9.2	5.7	8.3	74.6	25.4	45
Accommodation and Food Services	4.6	7.5	7.7	6.8	27.1	72.9	24
Other Services	4.6	7.4	6.0	6.2	65.5	34.5	37
Professional, Scientific and Technical Services	3.8	6.2	7.8	7.8	84.2	15.8	39
Transport, Postal and Warehousing	3.0	4.9	8.9	7.4	91.6	8.4	49
Wholesale Trade	2.6	4.1	4.0	3.1	88.3	11.7	45
Financial and Insurance Services	2.3	3.8	2.5	2.2	83.1	16.9	39
Administrative and Support Services	2.0	3.2	3.6	4.5	45.4	54.6	43
Electricity, Gas, Water and Waste Services	1.7	2.8	2.3	2.9	75.3	24.7	43
Mining	1.3	2.1	2.5	2.2	94.7	5.3	40
Arts and Recreation Services	0.7	1.2	1.9	0.4	40.5	59.5	30
Rental, Hiring and Real Estate Services	0.6	0.9	1.3	1.0	92.8	7.2	41
Information Media and Telecommunications	0.4	0.7	0.3	0.6	71.7	28.3	40
All industries	100.0	161.7	146.0	136.0	68.0	32.0	41

Source: ABS Labour Force Survey, Detailed, four quarter averages, February 2025. *Median age is from the ABS Census of Population and Housing, 2021. Median age has been derived using aggregated SA2s for the Employment Region.

Note: Small cells should be viewed with caution due to small sample sizes and regional volatility.



Employment Region Industry profile

Fitzroy Employment Region

Release date: 27 March 2025

Overview

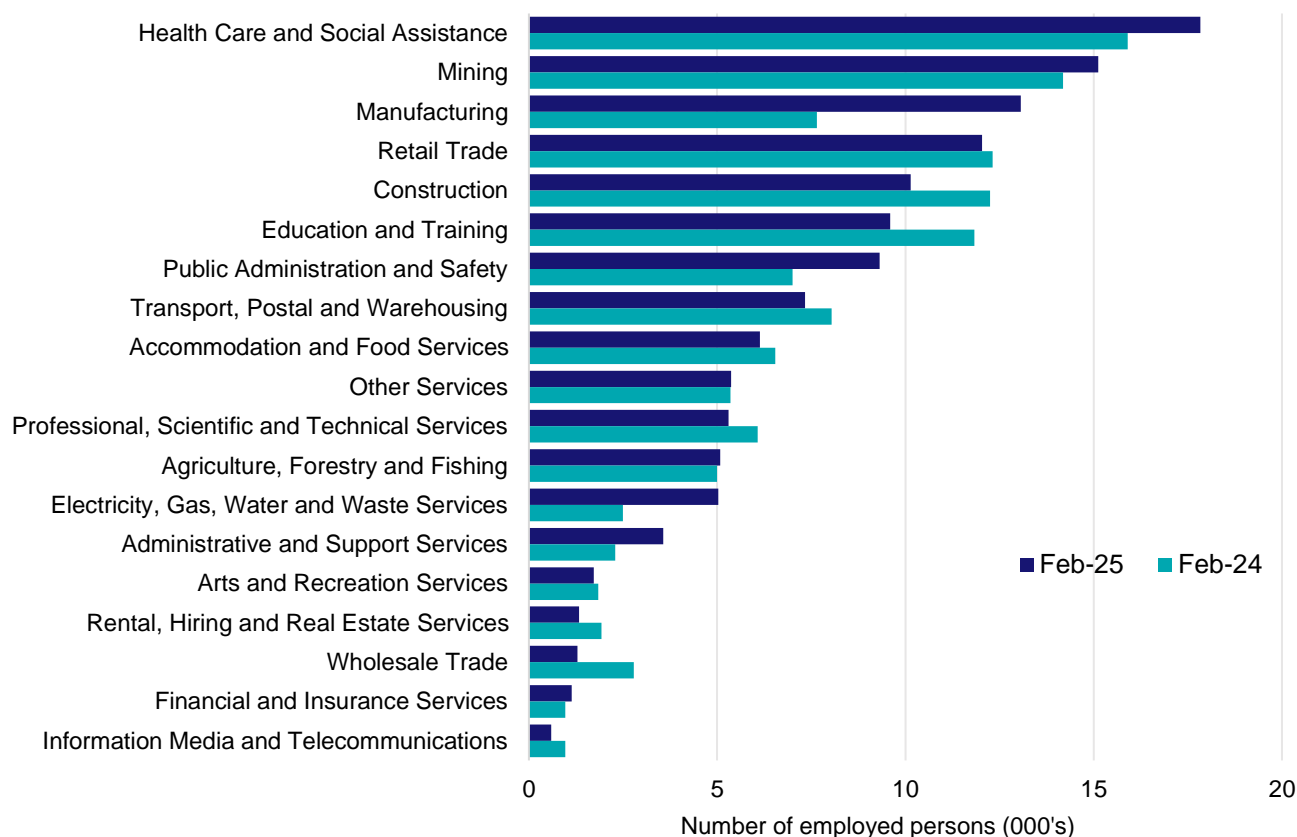
In February 2025, there were around 131,000 people employed in the Fitzroy Employment Region. The 5 largest employing industries in the region were Health Care and Social Assistance, Mining, Manufacturing, Retail Trade, and Construction. Together these 5 industries accounted for 52% of employment in the region.

Over the year to February 2025, employment in:

- Health Care and Social Assistance rose by 12.1% to stand at 17,800
- Mining rose by 6.5% to stand at 15,100
- Manufacturing rose by 70.8% to stand at 13,100.

In Health Care and Social Assistance in the Fitzroy Employment Region, 62% of workers were employed full-time; 89% were female; and the median age of the workforce was 41.

Employment by industry, February 2025 and February 2024



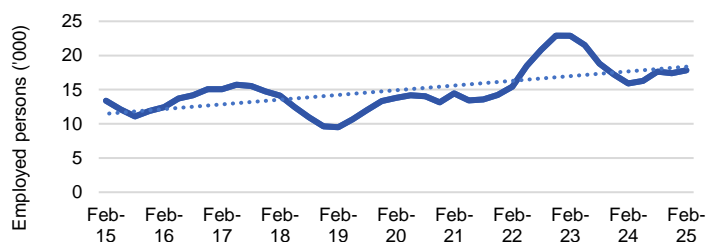
Source: ABS Labour Force Survey*, Detailed, four quarter averages, February 2025. Note that total employment for the region (four quarter averaged data) will not match data published in the Employment Region Labour Market dashboards (modelled estimates).

*ABS Labour Force Survey data are based on the Central Queensland SA4.

Notes: Data are the latest available. A high degree of caution should be exercised when interpreting data at the regional level, particularly in regards to percentage changes, given the volatility of the underlying data. For any enquiries related to the data in this report, please contact RegionalWorkforceAssessment@jobsandskills.gov.au

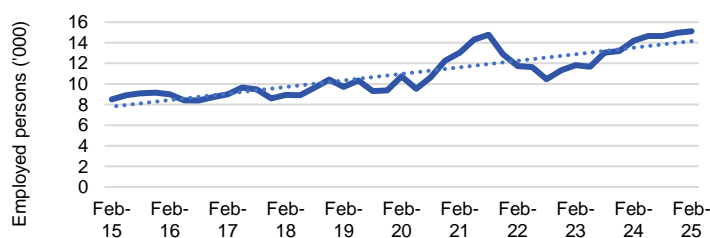
Five largest employing industries: key statistics

Health Care and Social Assistance



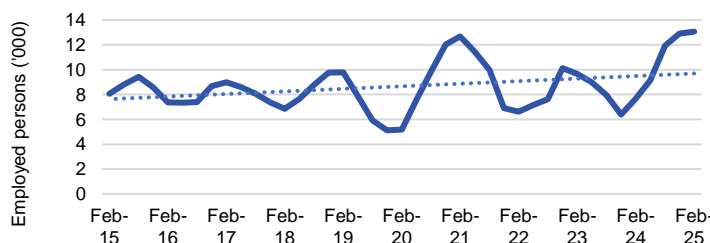
Number employed (Feb-25):	17,800
1 year employment change:	12.1%
5 year employment change:	29.1%
10 year employment change:	33.3%
Youth share of employment:	9.4%
Mature age share of employment:	13.8%

Mining



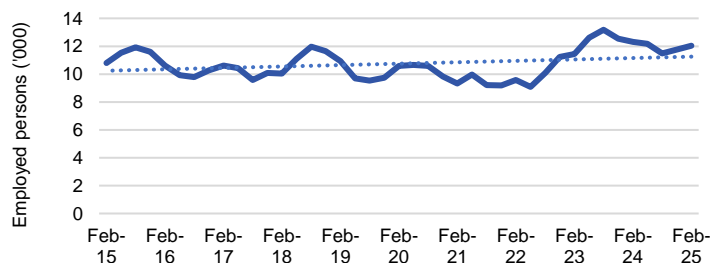
Number employed (Feb-25):	15,100
1 year employment change:	6.5%
5 year employment change:	40.8%
10 year employment change:	78.1%
Youth share of employment:	4.5%
Mature age share of employment:	7.7%

Manufacturing



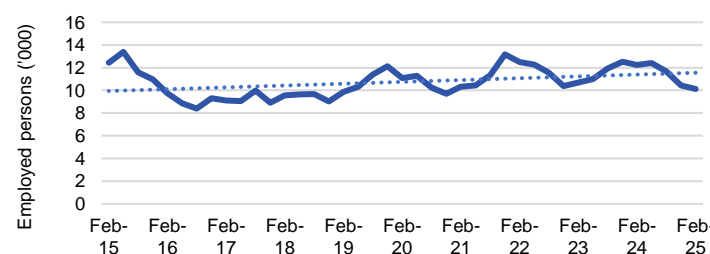
Number employed (Feb-25):	13,100
1 year employment change:	70.8%
5 year employment change:	152.0%
10 year employment change:	61.9%
Youth share of employment:	6.0%
Mature age share of employment:	6.6%

Retail Trade



Number employed (Feb-25):	12,000
1 year employment change:	-2.3%
5 year employment change:	13.6%
10 year employment change:	11.5%
Youth share of employment:	19.6%
Mature age share of employment:	7.1%

Construction



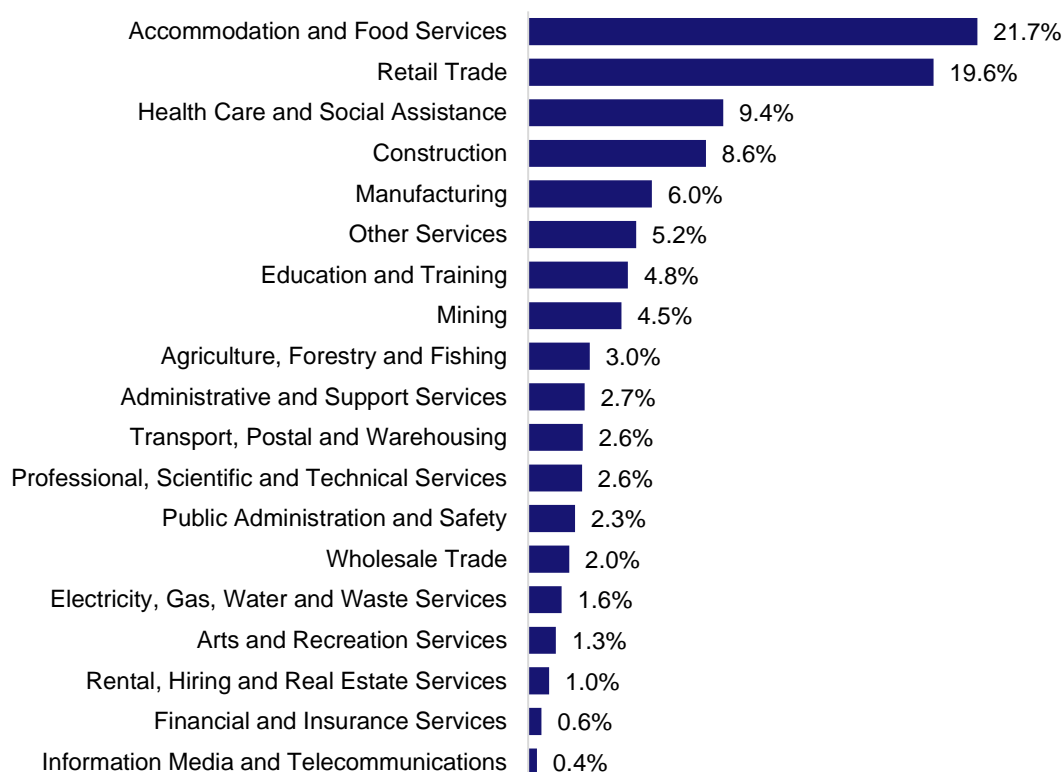
Number employed (Feb-25):	10,100
1 year employment change:	-17.3%
5 year employment change:	-8.7%
10 year employment change:	-18.5%
Youth share of employment:	8.6%
Mature age share of employment:	8.3%

Source: ABS Labour Force Survey, Detailed, four quarter averages, February 2025, except youth and mature age data which are from the ABS Census of Population and Housing, 2021.

Notes: In each chart, the solid line is the level of employment and the dotted line is a simple linear trend line for the 10 year period. Given the volatility of the underlying data, employment estimates should be treated with a high degree of caution. Particular focus should be placed on the employment series over time to ascertain more reliable long-term growth trends.

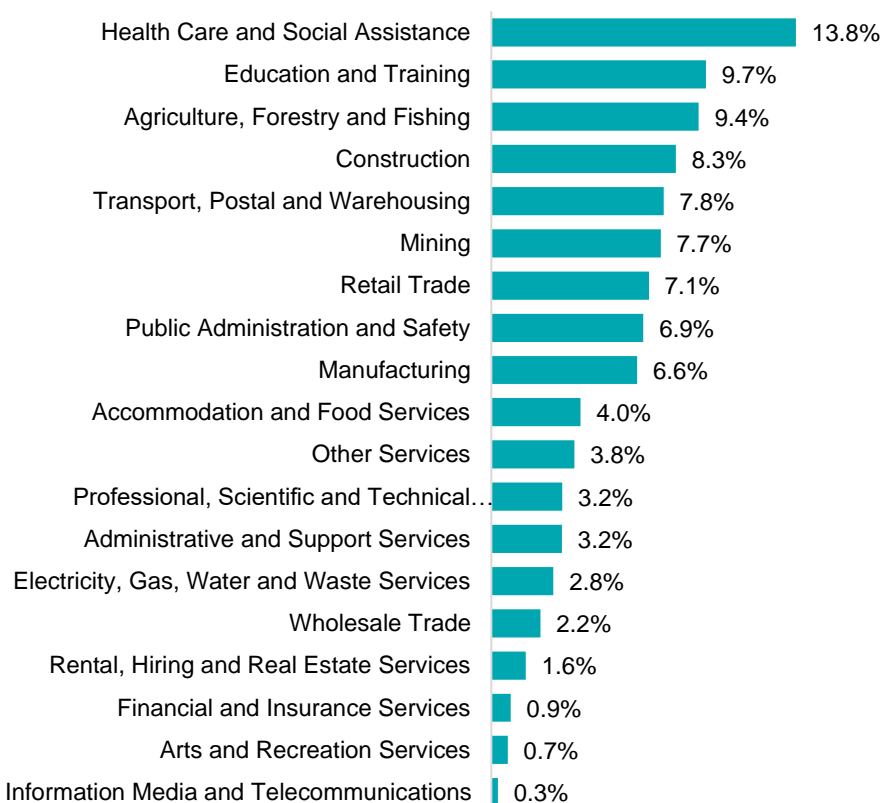
Employment characteristics by Industry

Which industries are youth (aged 15-24) employed in?



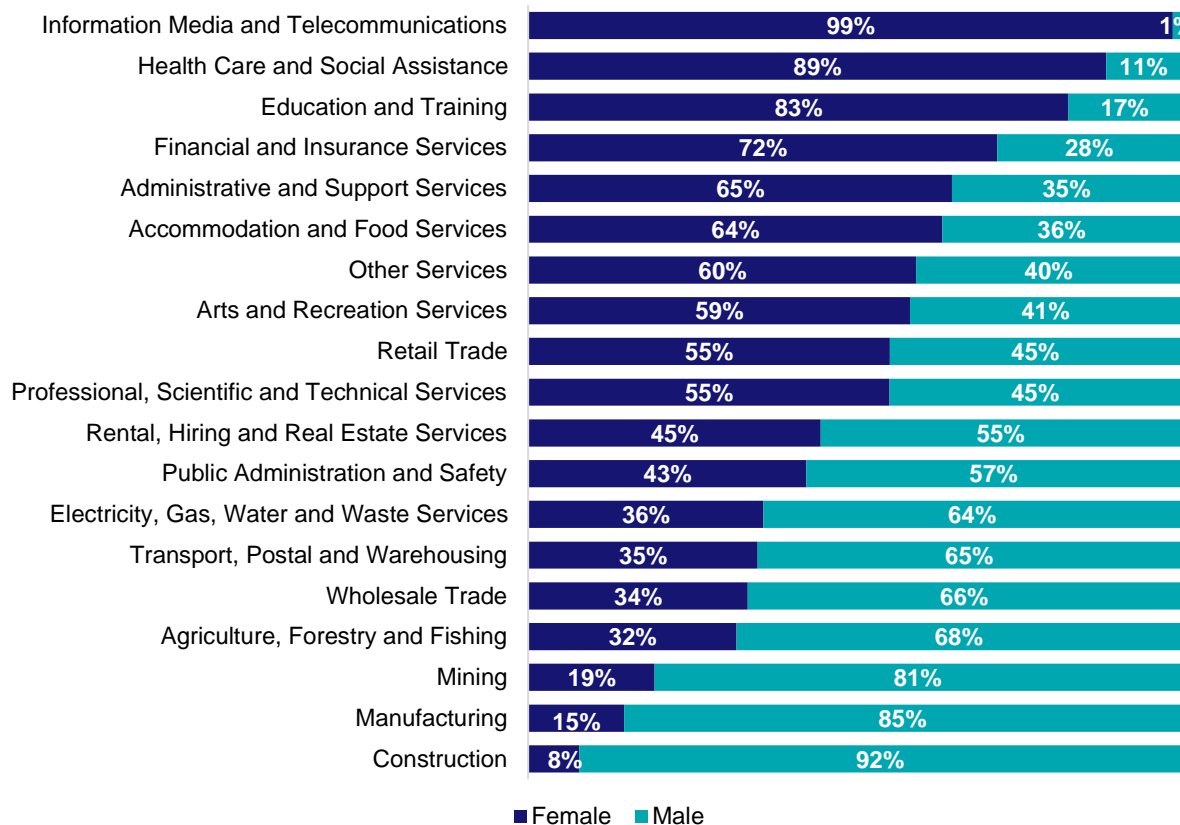
Source: ABS Census of Population and Housing, 2021.

Which industries are mature age persons (aged 55+) employed in?



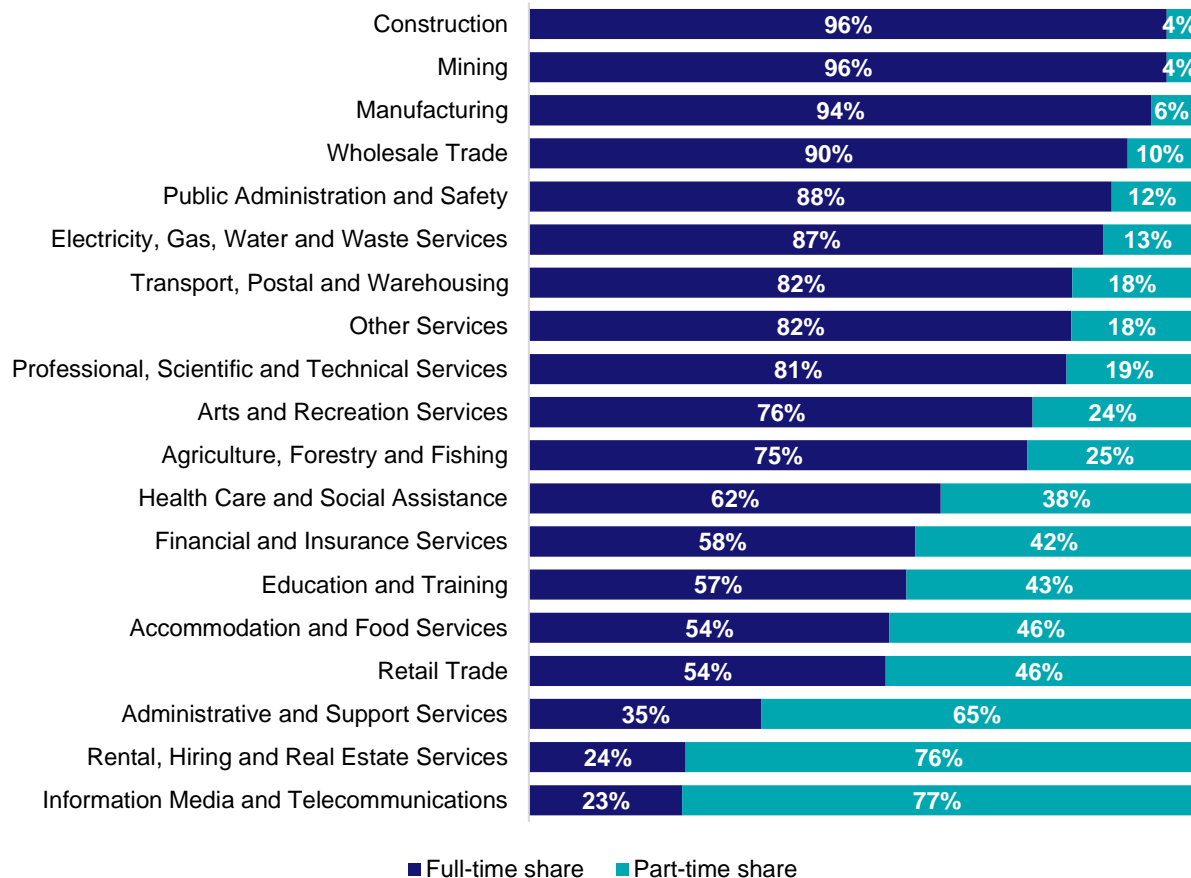
Source: ABS Census of Population and Housing, 2021. Note: SA2 level Census data have been aggregated to the Employment Region level.

Gender share by industry



Source: ABS Labour Force Survey, Detailed, four quarter averages, February 2025.

Full-time and part-time employment status by industry



Source: ABS Labour Force Survey, Detailed, four quarter averages, February 2025.

Appendix

Employment by industry, Fitzroy, February 2025

Industry (in order of size)	Share of employment in the region Feb-25 (%)	Employed ('000)			Full-time share %	Part-time share %	Median age *
		Feb-25	Feb-24	Feb-20			
Health Care and Social Assistance	13.6	17.8	15.9	13.8	62.2	37.8	41
Mining	11.5	15.1	14.2	10.7	96.3	3.7	41
Manufacturing	10.0	13.1	7.7	5.2	93.9	6.1	41
Retail Trade	9.2	12.0	12.3	10.6	53.9	46.1	33
Construction	7.7	10.1	12.3	11.1	96.3	3.7	39
Education and Training	7.3	9.6	11.8	12.1	57.0	43.0	44
Public Administration and Safety	7.1	9.3	7.0	6.2	88.0	12.0	45
Transport, Postal and Warehousing	5.6	7.3	8.0	5.5	82.1	17.9	47
Accommodation and Food Services	4.7	6.1	6.5	9.9	54.4	45.6	24
Other Services	4.1	5.4	5.4	5.1	81.9	18.1	37
Professional, Scientific and Technical Services	4.1	5.3	6.1	3.5	81.2	18.8	40
Agriculture, Forestry and Fishing	3.9	5.1	5.0	13.2	75.2	24.8	51
Electricity, Gas, Water and Waste Services	3.8	5.0	2.5	1.7	86.7	13.3	43
Administrative and Support Services	2.7	3.6	2.3	2.3	35.1	64.9	41
Arts and Recreation Services	1.3	1.7	1.8	2.3	76.1	23.9	34
Rental, Hiring and Real Estate Services	1.0	1.3	1.9	2.6	23.7	76.3	41
Wholesale Trade	1.0	1.3	2.8	2.3	90.4	9.6	40
Financial and Insurance Services	0.9	1.1	1.0	1.1	58.4	41.6	42
Information Media and Telecommunications	0.5	0.6	1.0	0.4	23.1	76.9	36
All industries	100.0	131.0	125.4	119.6	75.5	24.5	40

Source: ABS Labour Force Survey, Detailed, four quarter averages, February 2025. *Median age is from the ABS Census of Population and Housing, 2021. Median age has been derived using aggregated SA2s for the Employment Region.

Note: Small cells should be viewed with caution due to small sample sizes and regional volatility.

Employment Region Industry profile

Gold Coast Employment Region

Release date: 27 March 2025

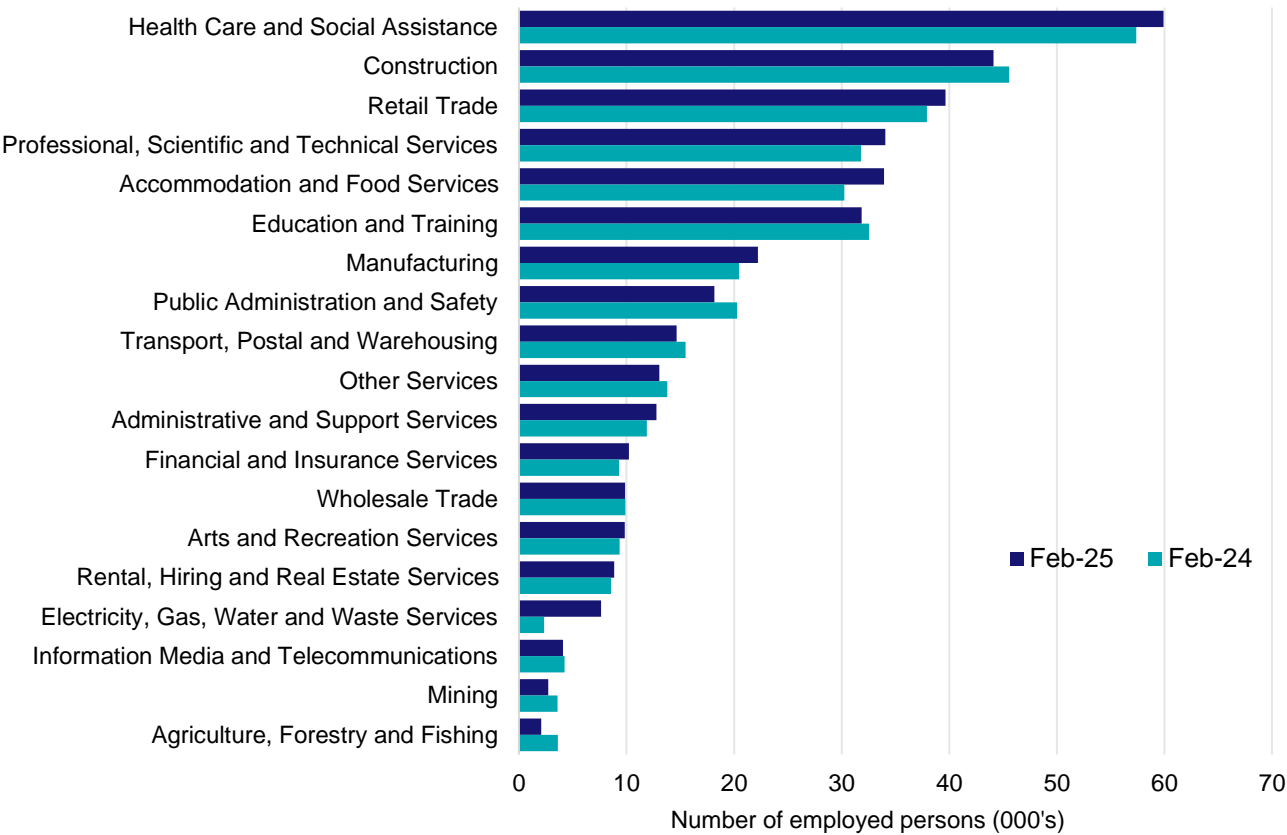
Overview

In February 2025, there were around 379,800 people employed in the Gold Coast Employment Region. The 5 largest employing industries in the region were Health Care and Social Assistance, Construction, Retail Trade, Professional, Scientific and Technical Services, and Accommodation and Food Services. Together these 5 industries accounted for 56% of employment in the region.

- Over the year to February 2025, employment in:
- Health Care and Social Assistance rose by 4.4% to stand at 59,900
 - Construction fell by 3.2% to stand at 44,100
 - Retail Trade rose by 4.5% to stand at 39,700.

In Health Care and Social Assistance in the Gold Coast Employment Region, 53% of workers were employed full-time; 75% were female; and the median age of the workforce was 43.

Employment by industry, February 2025 and February 2024



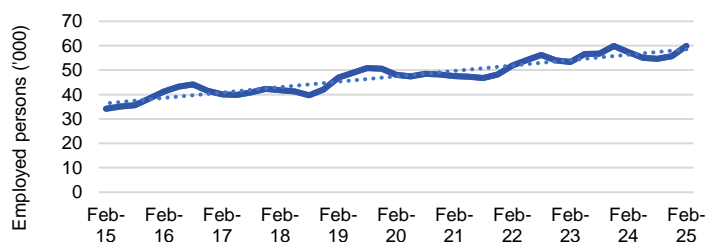
Source: ABS Labour Force Survey*, Detailed, four quarter averages, February 2025. Note that total employment for the region (four quarter averaged data) will not match data published in the Employment Region Labour Market dashboards (modelled estimates).

*ABS Labour Force Survey data are based on the Gold Coast SA4.

Notes: Data are the latest available. A high degree of caution should be exercised when interpreting data at the regional level, particularly in regards to percentage changes, given the volatility of the underlying data. For any enquiries related to the data in this report, please contact RegionalWorkforceAssessment@jobsandskills.gov.au

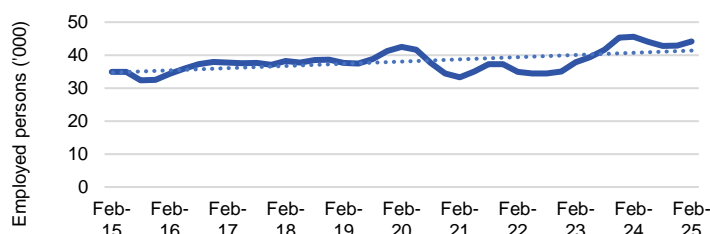
Five largest employing industries: key statistics

Health Care and Social Assistance



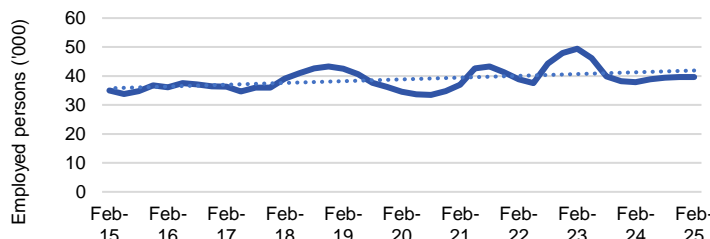
Number employed (Feb-25):	59,900
1 year employment change:	4.4%
5 year employment change:	24.7%
10 year employment change:	75.4%
Youth share of employment:	9.3%
Mature age share of employment:	18.2%

Construction



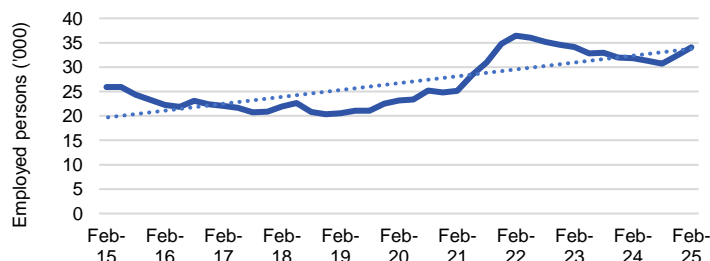
Number employed (Feb-25):	44,100
1 year employment change:	-3.2%
5 year employment change:	3.9%
10 year employment change:	26.4%
Youth share of employment:	9.7%
Mature age share of employment:	10.7%

Retail Trade



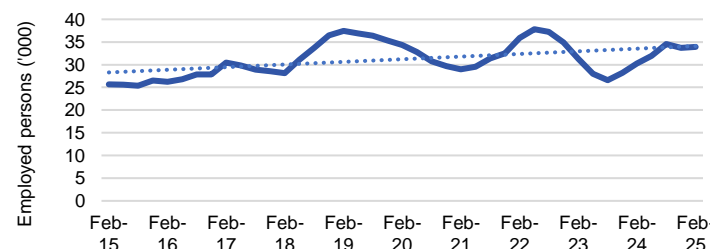
Number employed (Feb-25):	39,700
1 year employment change:	4.5%
5 year employment change:	14.9%
10 year employment change:	13.2%
Youth share of employment:	20.8%
Mature age share of employment:	9.0%

Professional, Scientific and Technical Services



Number employed (Feb-25):	34,100
1 year employment change:	7.1%
5 year employment change:	46.9%
10 year employment change:	31.4%
Youth share of employment:	3.7%
Mature age share of employment:	6.8%

Accommodation and Food Services



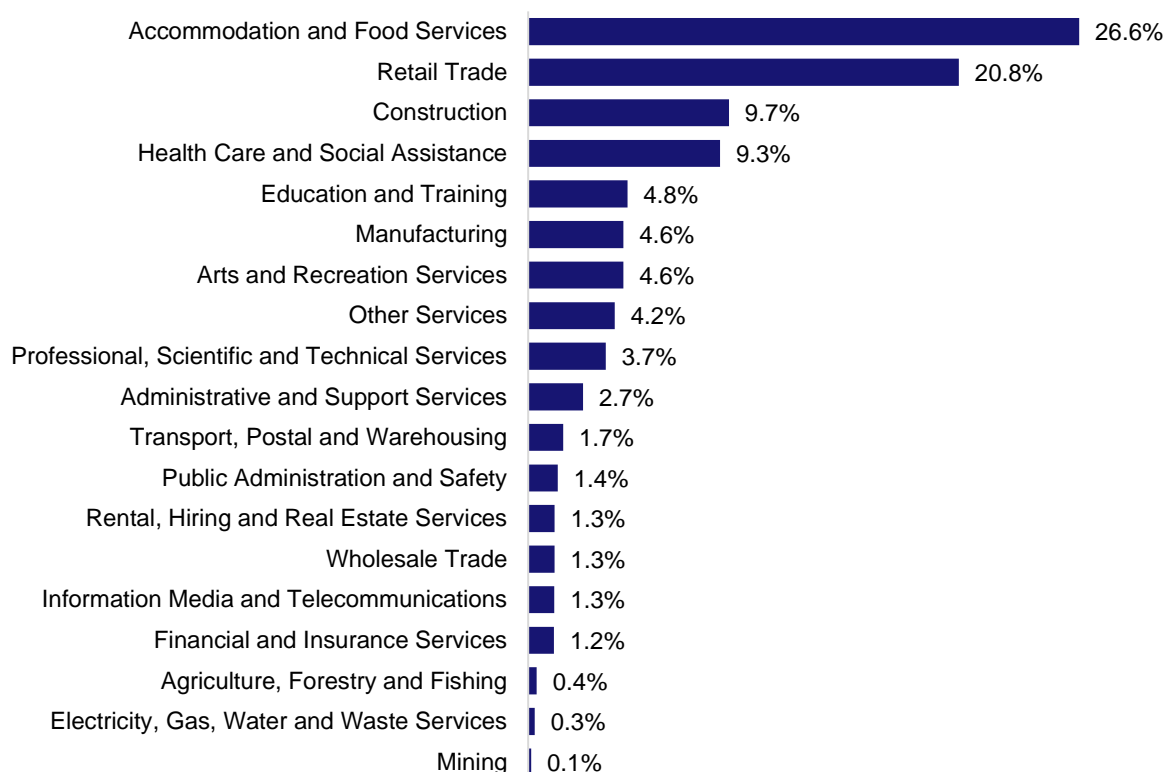
Number employed (Feb-25):	34,000
1 year employment change:	12.2%
5 year employment change:	-1.1%
10 year employment change:	32.2%
Youth share of employment:	26.6%
Mature age share of employment:	5.0%

Source: ABS Labour Force Survey, Detailed, four quarter averages, February 2025, except youth and mature age data which are from the ABS Census of Population and Housing, 2021.

Notes: In each chart, the solid line is the level of employment and the dotted line is a simple linear trend line for the 10 year period. Given the volatility of the underlying data, employment estimates should be treated with a high degree of caution. Particular focus should be placed on the employment series over time to ascertain more reliable long-term growth trends.

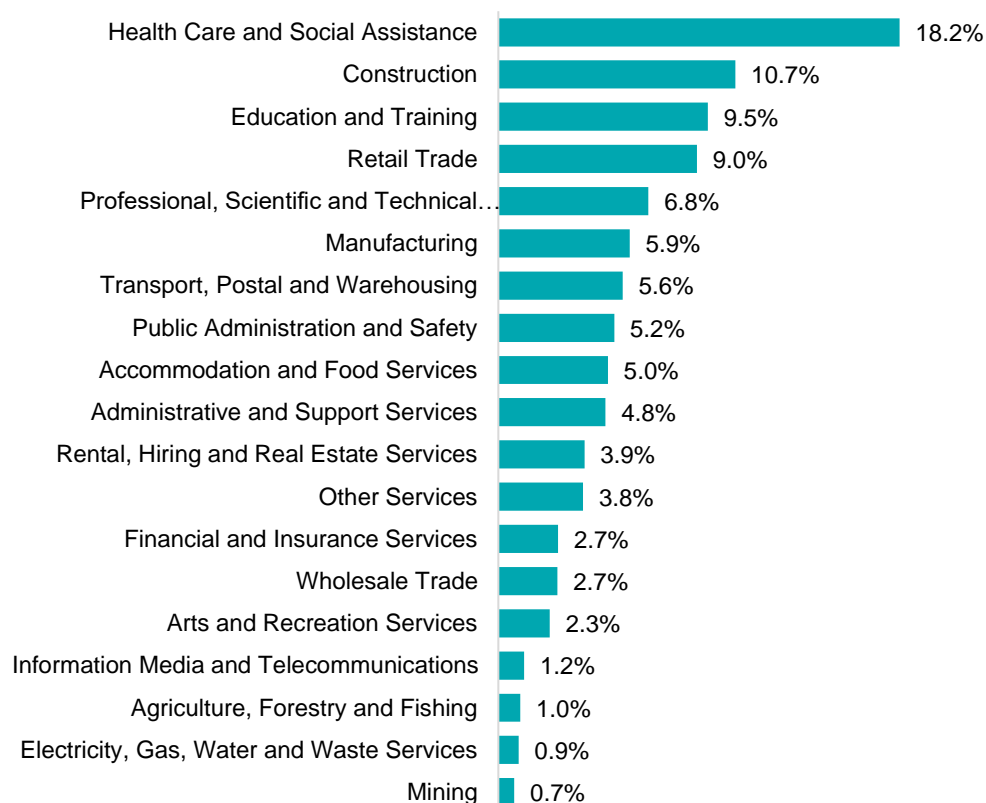
Employment characteristics by Industry

Which industries are youth (aged 15-24) employed in?



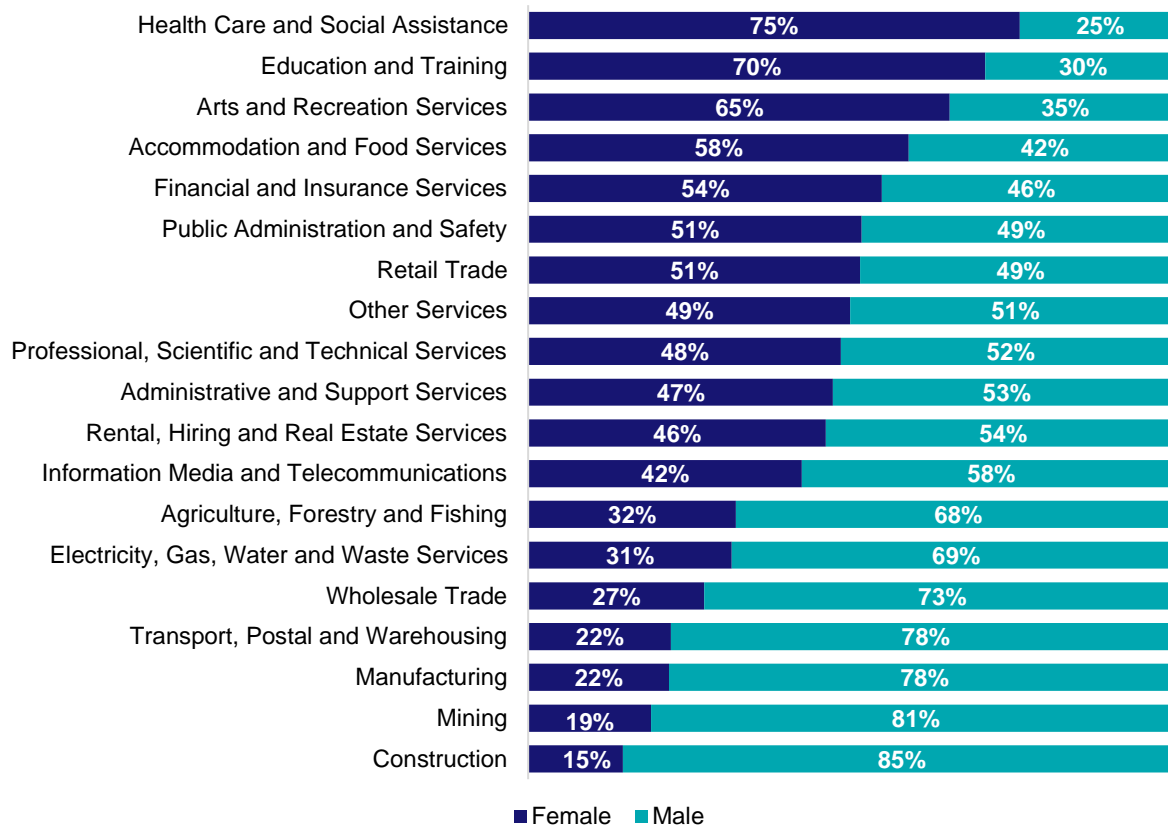
Source: ABS Census of Population and Housing, 2021.

Which industries are mature age persons (aged 55+) employed in?



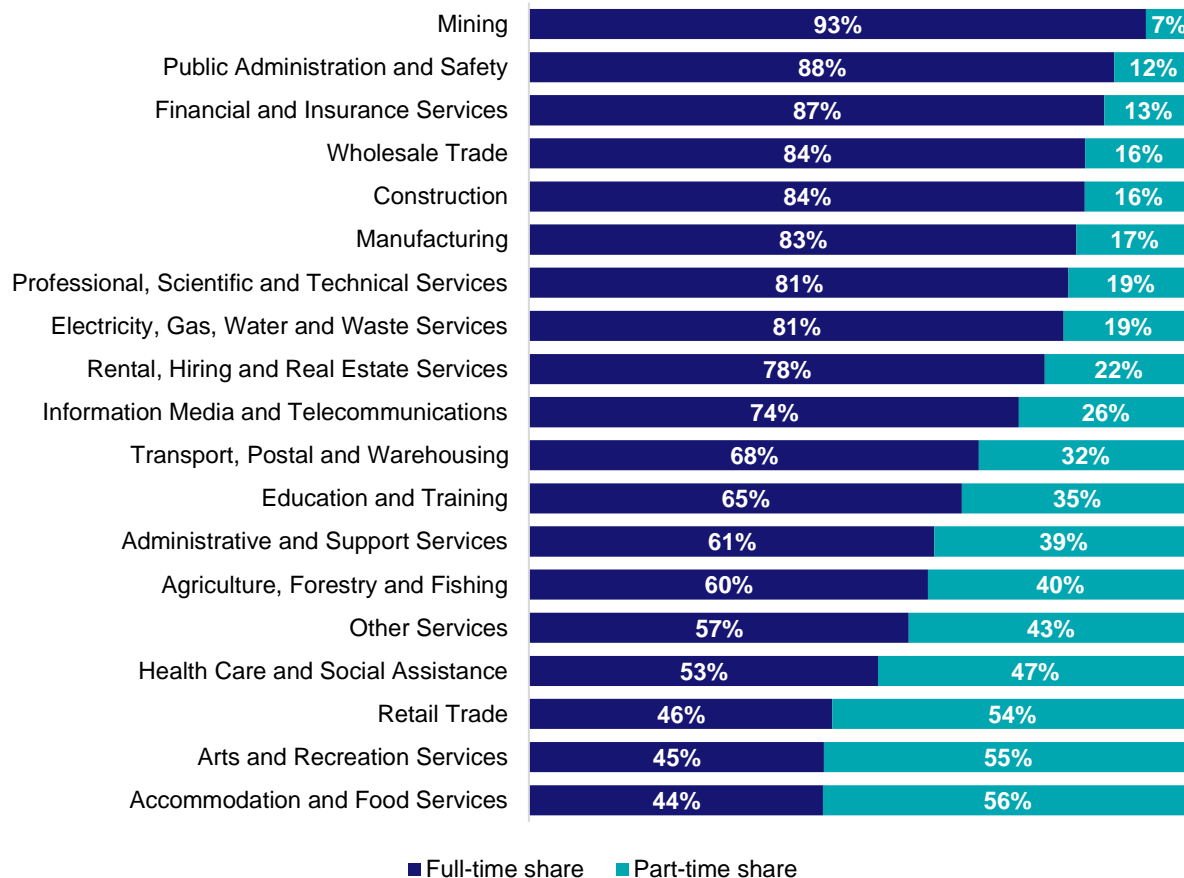
Source: ABS Census of Population and Housing, 2021. Note: SA2 level Census data have been aggregated to the Employment Region level.

Gender share by industry



Source: ABS Labour Force Survey, Detailed, four quarter averages, February 2025.

Full-time and part-time employment status by industry



Source: ABS Labour Force Survey, Detailed, four quarter averages, February 2025.

Appendix

Employment by industry, Gold Coast, February 2025

Industry (in order of size)	Share of employment in the region Feb-25 (%)	Employed ('000)			Full-time share %	Part-time share %	Median age *
		Feb-25	Feb-24	Feb-20			
Health Care and Social Assistance	15.8	59.9	57.4	48.1	52.7	47.3	43
Construction	11.6	44.1	45.6	42.5	83.9	16.1	40
Retail Trade	10.4	39.7	37.9	34.5	45.8	54.2	35
Professional, Scientific and Technical Services	9.0	34.1	31.8	23.2	81.5	18.5	41
Accommodation and Food Services	8.9	34.0	30.3	34.3	44.4	55.6	28
Education and Training	8.4	31.9	32.5	24.9	65.3	34.7	44
Manufacturing	5.8	22.2	20.5	23.6	82.7	17.3	43
Public Administration and Safety	4.8	18.2	20.3	14.1	88.4	11.6	46
Transport, Postal and Warehousing	3.9	14.6	15.5	13.2	67.9	32.1	47
Other Services	3.4	13.1	13.8	11.5	57.4	42.6	39
Administrative and Support Services	3.4	12.8	11.9	15.1	61.2	38.8	43
Financial and Insurance Services	2.7	10.2	9.3	8.5	86.9	13.1	42
Wholesale Trade	2.6	9.9	9.9	8.7	84.0	16.0	45
Arts and Recreation Services	2.6	9.8	9.4	9.5	44.5	55.5	35
Rental, Hiring and Real Estate Services	2.3	8.9	8.6	6.5	77.9	22.1	46
Electricity, Gas, Water and Waste Services	2.0	7.6	2.3	2.5	80.7	19.3	45
Information Media and Telecommunications	1.1	4.1	4.3	5.0	74.0	26.0	39
Mining	0.7	2.7	3.6	2.6	93.2	6.8	42
Agriculture, Forestry and Fishing	0.5	2.1	3.6	1.2	60.2	39.8	48
All industries	100.0	379.8	368.4	329.7	66.2	33.8	41

Source: ABS Labour Force Survey, Detailed, four quarter averages, February 2025. *Median age is from the ABS Census of Population and Housing, 2021. Median age has been derived using aggregated SA2s for the Employment Region.

Note: Small cells should be viewed with caution due to small sample sizes and regional volatility.

Employment Region Industry profile

Somerset Employment Region

Release date: 27 March 2025

Overview

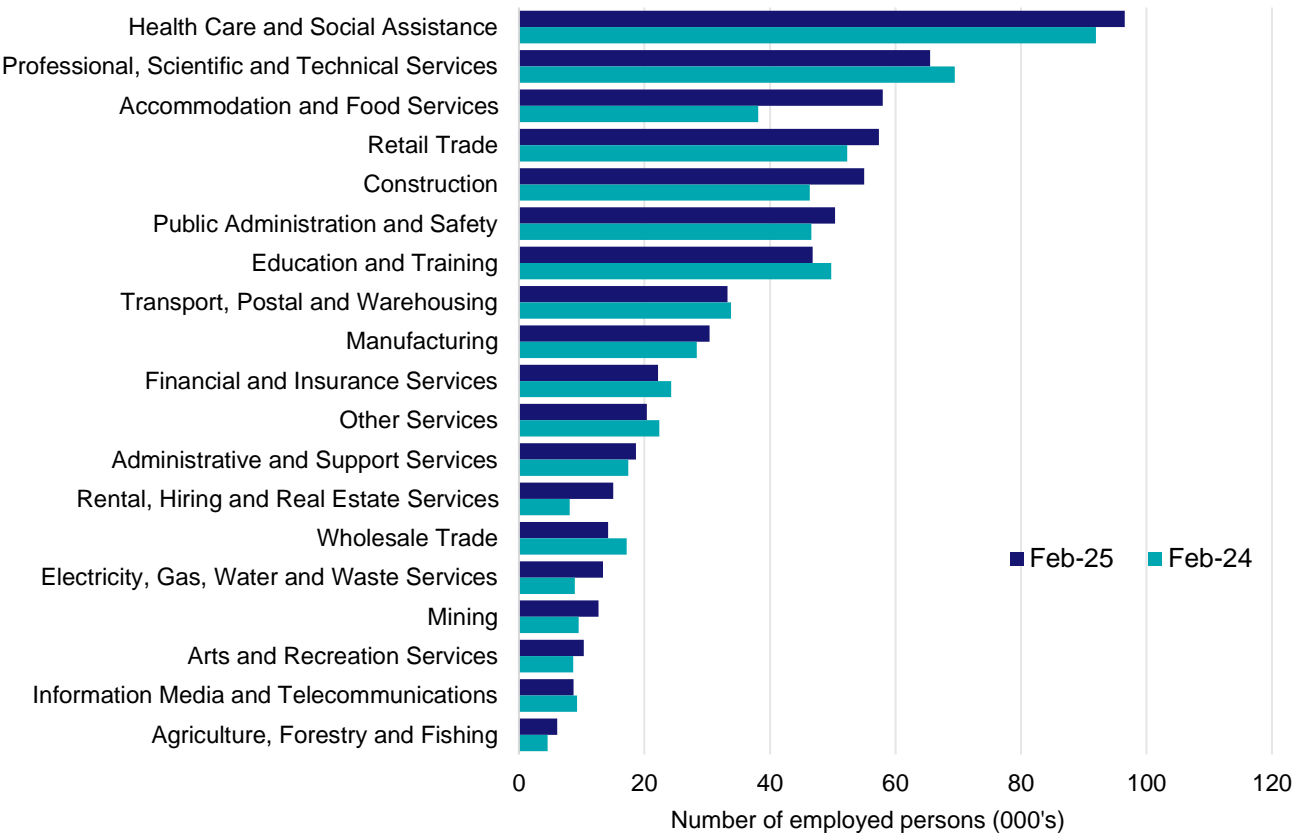
In February 2025, there were around 634,900 people employed in the Somerset Employment Region. The 5 largest employing industries in the region were Health Care and Social Assistance, Professional, Scientific and Technical Services, Accommodation and Food Services, Retail Trade, and Construction. Together these 5 industries accounted for 52% of employment in the region.

Over the year to February 2025, employment in:

- Health Care and Social Assistance rose by 5.0% to stand at 96,500
- Professional, Scientific and Technical Services fell by 5.7% to stand at 65,500
- Accommodation and Food Services rose by 52.0% to stand at 58,000.

In Health Care and Social Assistance in the Somerset Employment Region, 57% of workers were employed full-time; 77% were female; and the median age of the workforce was 40.

Employment by industry, February 2025 and February 2024



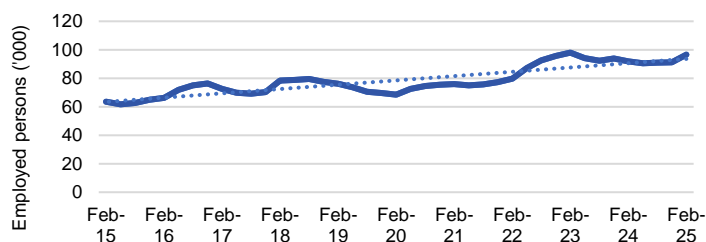
Source: ABS Labour Force Survey*, Detailed, four quarter averages, February 2025. Note that total employment for the region (four quarter averaged data) will not match data published in the Employment Region Labour Market dashboards (modelled estimates).

*ABS Labour Force Survey data are based on the combined SA4s of Brisbane - North; Brisbane Inner City; Moreton Bay - North; and Moreton Bay - South.

Notes: Data are the latest available. A high degree of caution should be exercised when interpreting data at the regional level, particularly in regards to percentage changes, given the volatility of the underlying data. For any enquiries related to the data in this report, please contact RegionalWorkforceAssessment@jobsandskills.gov.au

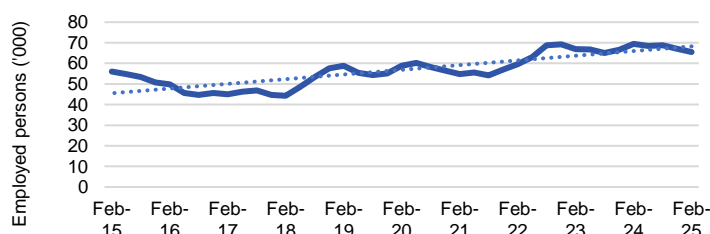
Five largest employing industries: key statistics

Health Care and Social Assistance



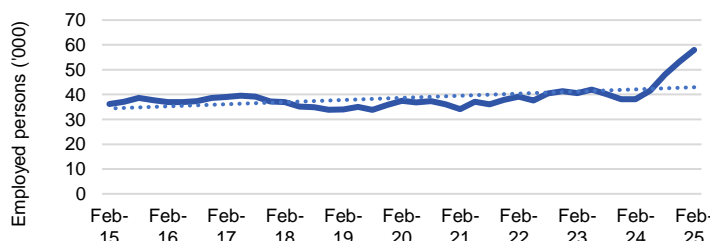
Number employed (Feb-25):	96,500
1 year employment change:	5.0%
5 year employment change:	41.1%
10 year employment change:	51.7%
Youth share of employment:	11.8%
Mature age share of employment:	18.7%

Professional, Scientific and Technical Services



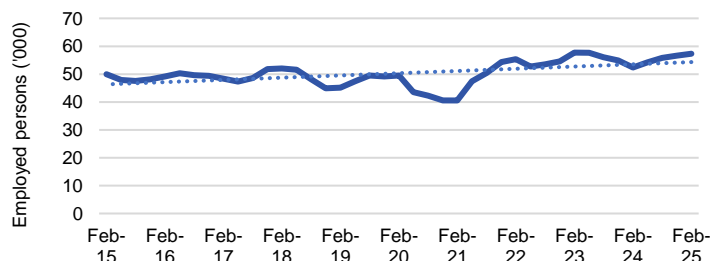
Number employed (Feb-25):	65,500
1 year employment change:	-5.7%
5 year employment change:	11.3%
10 year employment change:	17.0%
Youth share of employment:	6.4%
Mature age share of employment:	9.1%

Accommodation and Food Services



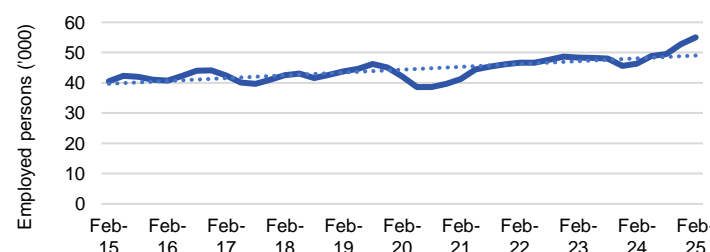
Number employed (Feb-25):	58,000
1 year employment change:	52.0%
5 year employment change:	54.5%
10 year employment change:	60.1%
Youth share of employment:	23.7%
Mature age share of employment:	2.5%

Retail Trade



Number employed (Feb-25):	57,400
1 year employment change:	9.6%
5 year employment change:	15.9%
10 year employment change:	14.8%
Youth share of employment:	19.0%
Mature age share of employment:	7.1%

Construction



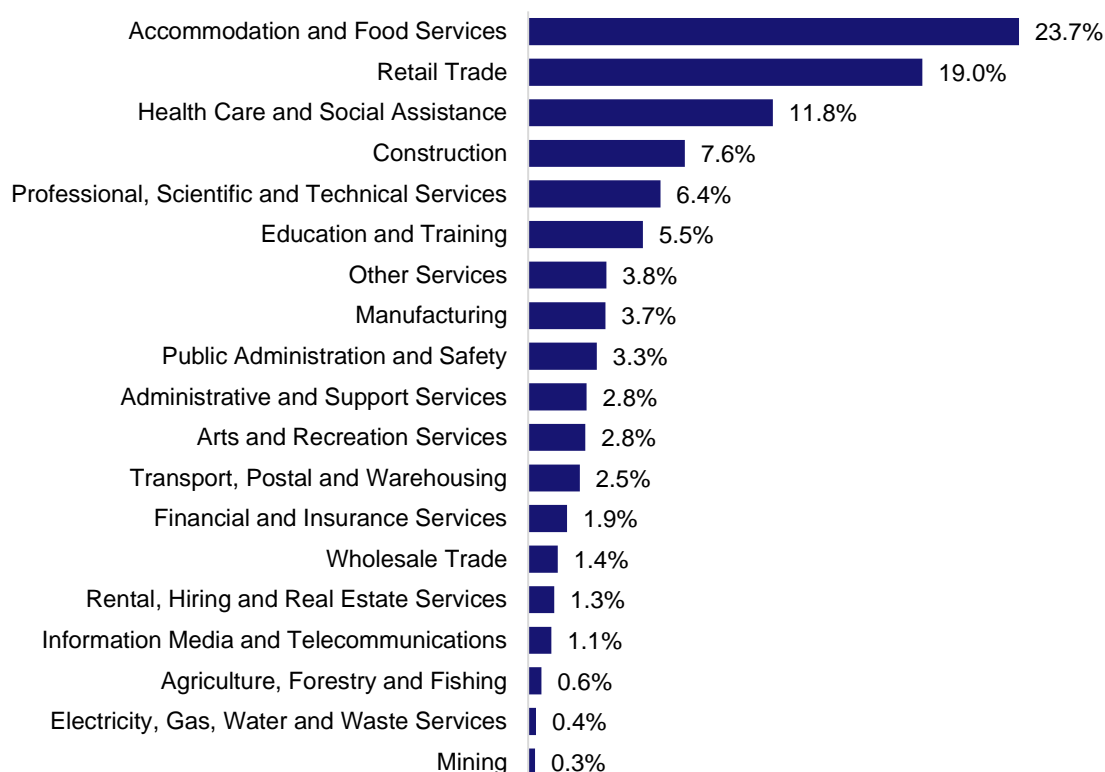
Number employed (Feb-25):	55,000
1 year employment change:	18.7%
5 year employment change:	30.6%
10 year employment change:	35.6%
Youth share of employment:	7.6%
Mature age share of employment:	7.7%

Source: ABS Labour Force Survey, Detailed, four quarter averages, February 2025, except youth and mature age data which are from the ABS Census of Population and Housing, 2021.

Notes: In each chart, the solid line is the level of employment and the dotted line is a simple linear trend line for the 10 year period. Given the volatility of the underlying data, employment estimates should be treated with a high degree of caution. Particular focus should be placed on the employment series over time to ascertain more reliable long-term growth trends.

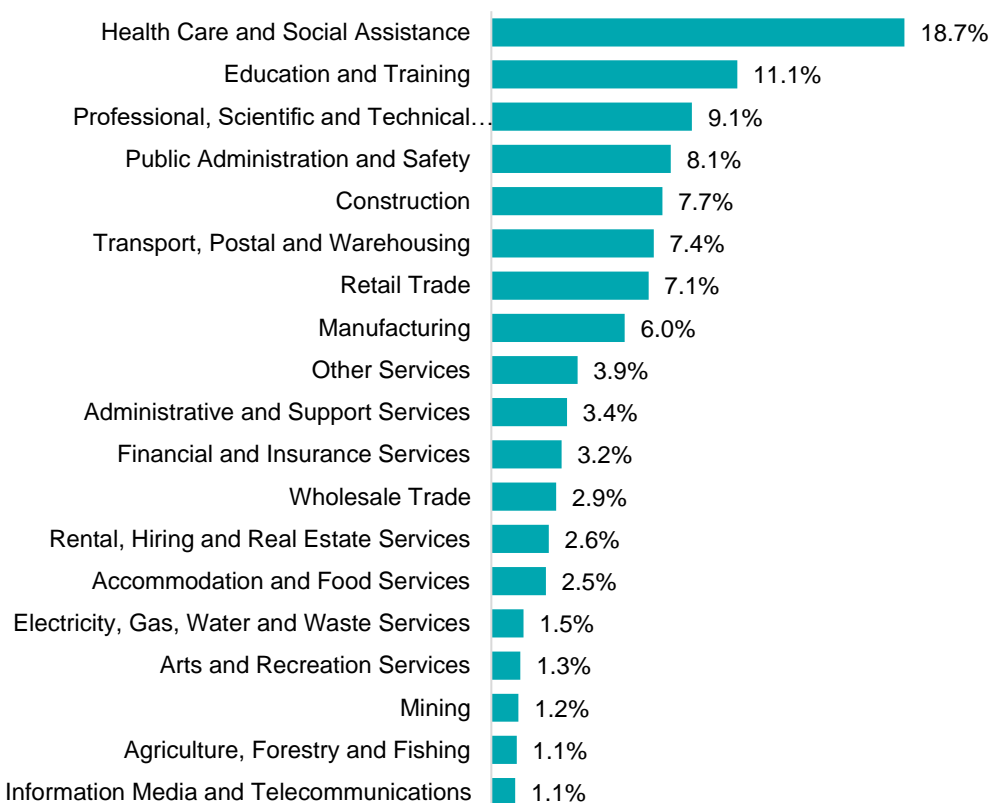
Employment characteristics by Industry

Which industries are youth (aged 15-24) employed in?



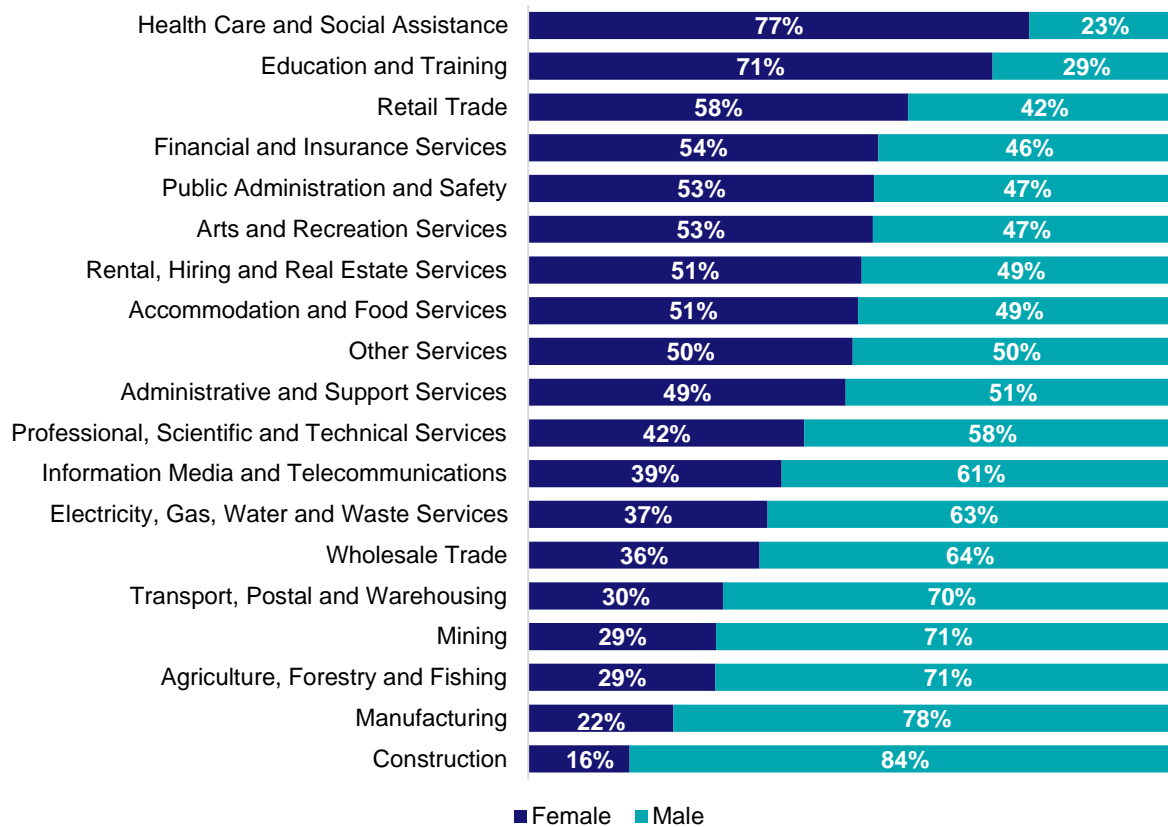
Source: ABS Census of Population and Housing, 2021.

Which industries are mature age persons (aged 55+) employed in?



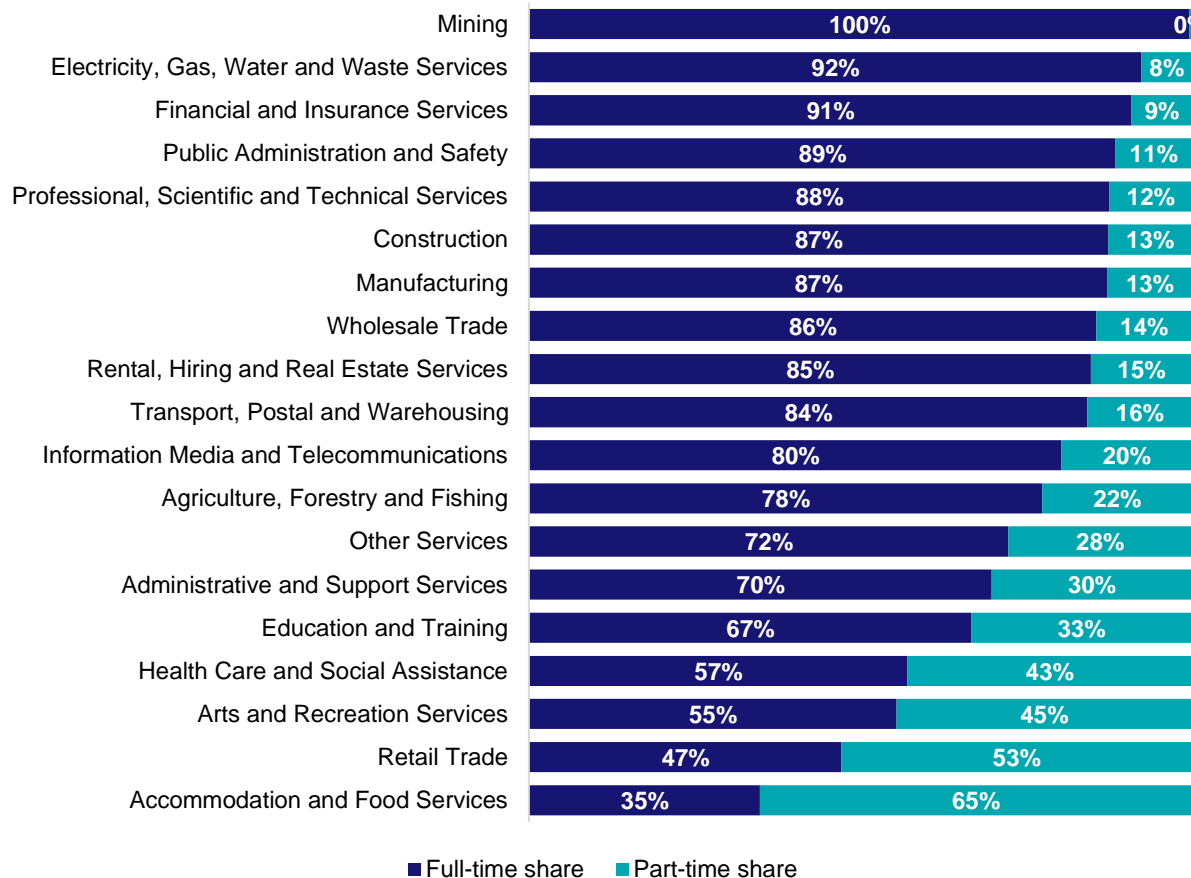
Source: ABS Census of Population and Housing, 2021. Note: SA2 level Census data have been aggregated to the Employment Region level.

Gender share by industry



Source: ABS Labour Force Survey, Detailed, four quarter averages, February 2025.

Full-time and part-time employment status by industry



Source: ABS Labour Force Survey, Detailed, four quarter averages, February 2025.

Appendix

Employment by industry, Somerset, February 2025

Industry (in order of size)	Share of employment in the region Feb-25 (%)	Employed ('000)			Full-time share %	Part-time share %	Median age *
		Feb-25	Feb-24	Feb-20			
Health Care and Social Assistance	15.2	96.5	91.9	68.4	57.1	42.9	40
Professional, Scientific and Technical Services	10.3	65.5	69.5	58.9	87.7	12.3	39
Accommodation and Food Services	9.1	58.0	38.1	37.5	34.9	65.1	23
Retail Trade	9.0	57.4	52.3	49.5	47.2	52.8	31
Construction	8.7	55.0	46.4	42.1	87.4	12.6	38
Public Administration and Safety	7.9	50.4	46.6	38.8	88.5	11.5	42
Education and Training	7.4	46.8	49.7	43.8	66.8	33.2	43
Transport, Postal and Warehousing	5.2	33.3	33.8	30.1	84.3	15.7	43
Manufacturing	4.8	30.4	28.3	27.8	87.4	12.6	42
Financial and Insurance Services	3.5	22.2	24.3	16.5	91.0	9.0	40
Other Services	3.2	20.4	22.4	21.3	72.4	27.6	37
Administrative and Support Services	2.9	18.6	17.5	20.8	69.9	30.1	38
Rental, Hiring and Real Estate Services	2.4	15.0	8.1	13.4	84.8	15.2	40
Wholesale Trade	2.2	14.2	17.2	17.0	85.7	14.3	43
Electricity, Gas, Water and Waste Services	2.1	13.4	8.9	8.0	92.4	7.6	44
Mining	2.0	12.7	9.5	7.4	99.7	0.3	41
Arts and Recreation Services	1.6	10.3	8.7	10.6	55.5	44.5	32
Information Media and Telecommunications	1.4	8.7	9.3	9.2	80.4	19.6	37
Agriculture, Forestry and Fishing	1.0	6.1	4.6	4.0	77.5	22.5	37
All industries	100.0	634.9	587.0	525.3	71.5	28.5	38

Source: ABS Labour Force Survey, Detailed, four quarter averages, February 2025. *Median age is from the ABS Census of Population and Housing, 2021. Median age has been derived using aggregated SA2s for the Employment Region.

Note: Small cells should be viewed with caution due to small sample sizes and regional volatility.

Employment Region Industry profile

Wide Bay and Sunshine Coast Employment Region

Release date: 27 March 2025

Overview

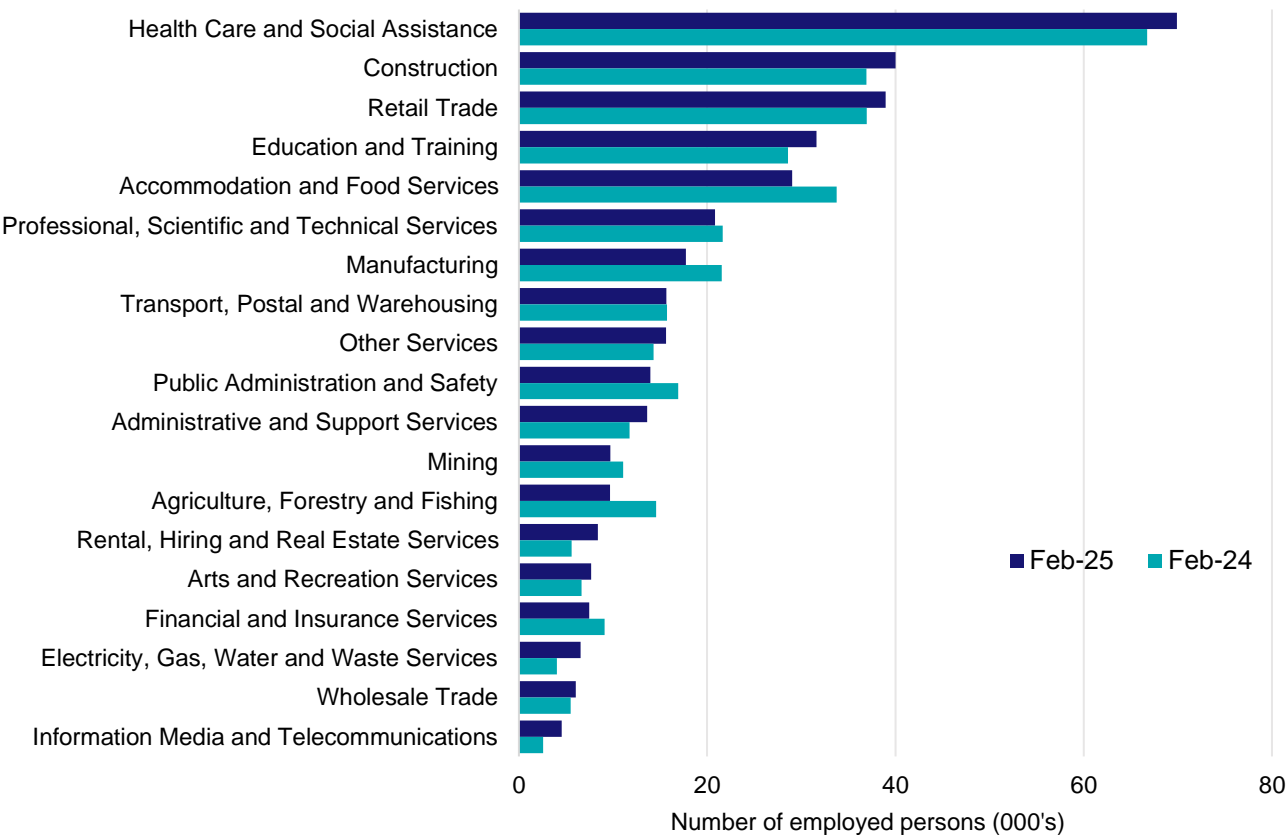
In February 2025, there were around 367,100 people employed in the Wide Bay and Sunshine Coast Employment Region. The 5 largest employing industries in the region were Health Care and Social Assistance, Construction, Retail Trade, Education and Training, and Accommodation and Food Services. Together these 5 industries accounted for 57% of employment in the region.

Over the year to February 2025, employment in:

- Health Care and Social Assistance rose by 4.7% to stand at 69,900
- Construction rose by 8.4% to stand at 40,000
- Retail Trade rose by 5.4% to stand at 39,000.

In Health Care and Social Assistance in the Wide Bay and Sunshine Coast Employment Region, 50% of workers were employed full-time; 74% were female; and the median age of the workforce was 45.

Employment by industry, February 2025 and February 2024



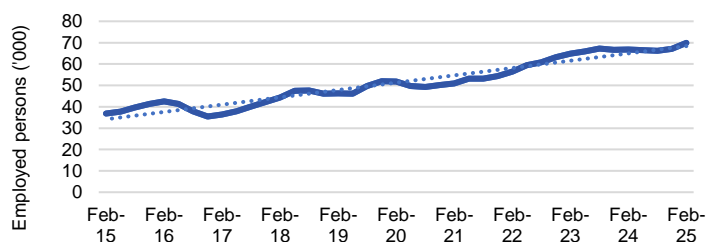
Source: ABS Labour Force Survey*, Detailed, four quarter averages, February 2025. Note that total employment for the region (four quarter averaged data) will not match data published in the Employment Region Labour Market dashboards (modelled estimates).

*ABS Labour Force Survey data are based on the combined SA4s of Sunshine Coast and Wide Bay.

Notes: Data are the latest available. A high degree of caution should be exercised when interpreting data at the regional level, particularly in regards to percentage changes, given the volatility of the underlying data. For any enquiries related to the data in this report, please contact RegionalWorkforceAssessment@jobsandskills.gov.au

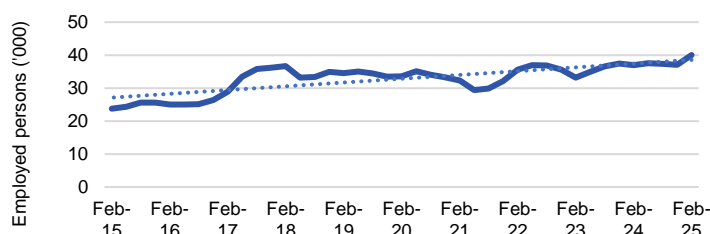
Five largest employing industries: key statistics

Health Care and Social Assistance



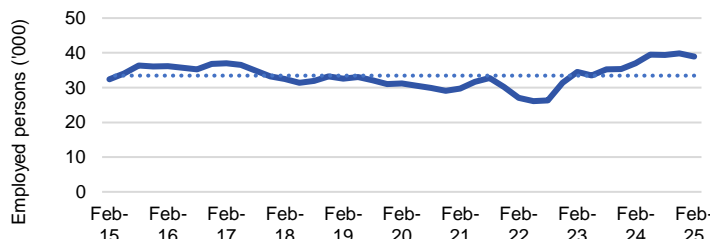
Number employed (Feb-25):	69,900
1 year employment change:	4.7%
5 year employment change:	34.9%
10 year employment change:	89.6%
Youth share of employment:	10.4%
Mature age share of employment:	20.5%

Construction



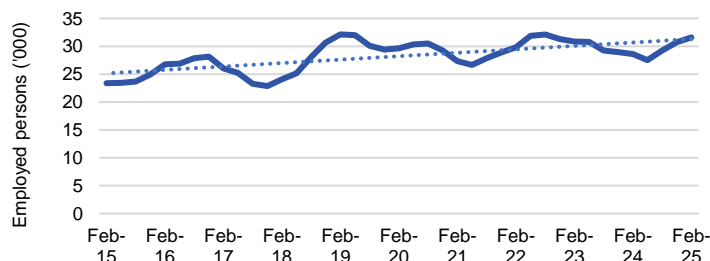
Number employed (Feb-25):	40,000
1 year employment change:	8.4%
5 year employment change:	19.4%
10 year employment change:	68.5%
Youth share of employment:	10.7%
Mature age share of employment:	9.4%

Retail Trade



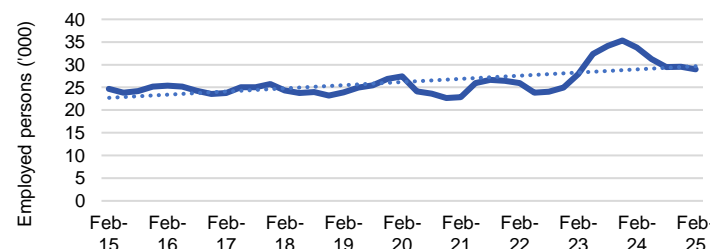
Number employed (Feb-25):	39,000
1 year employment change:	5.4%
5 year employment change:	24.7%
10 year employment change:	20.2%
Youth share of employment:	21.1%
Mature age share of employment:	8.6%

Education and Training



Number employed (Feb-25):	31,600
1 year employment change:	10.5%
5 year employment change:	6.7%
10 year employment change:	35.4%
Youth share of employment:	3.5%
Mature age share of employment:	10.2%

Accommodation and Food Services



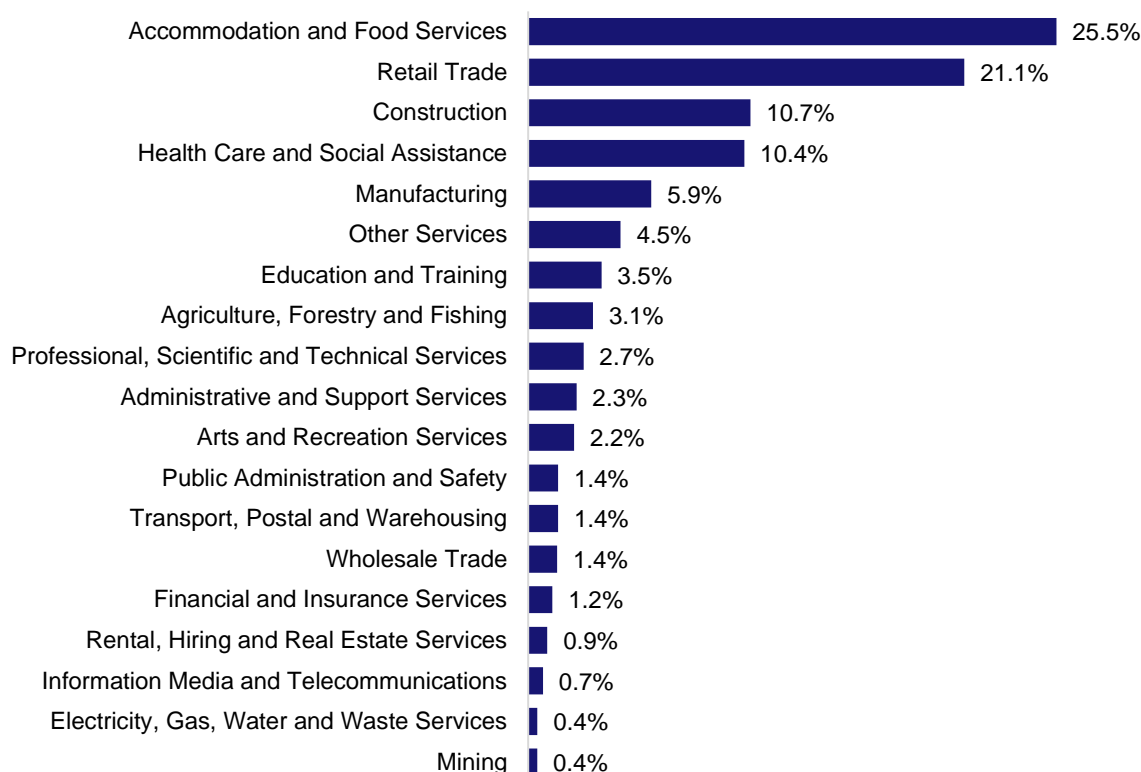
Number employed (Feb-25):	29,000
1 year employment change:	-14.0%
5 year employment change:	5.9%
10 year employment change:	17.7%
Youth share of employment:	25.5%
Mature age share of employment:	4.6%

Source: ABS Labour Force Survey, Detailed, four quarter averages, February 2025, except youth and mature age data which are from the ABS Census of Population and Housing, 2021.

Notes: In each chart, the solid line is the level of employment and the dotted line is a simple linear trend line for the 10 year period. Given the volatility of the underlying data, employment estimates should be treated with a high degree of caution. Particular focus should be placed on the employment series over time to ascertain more reliable long-term growth trends.

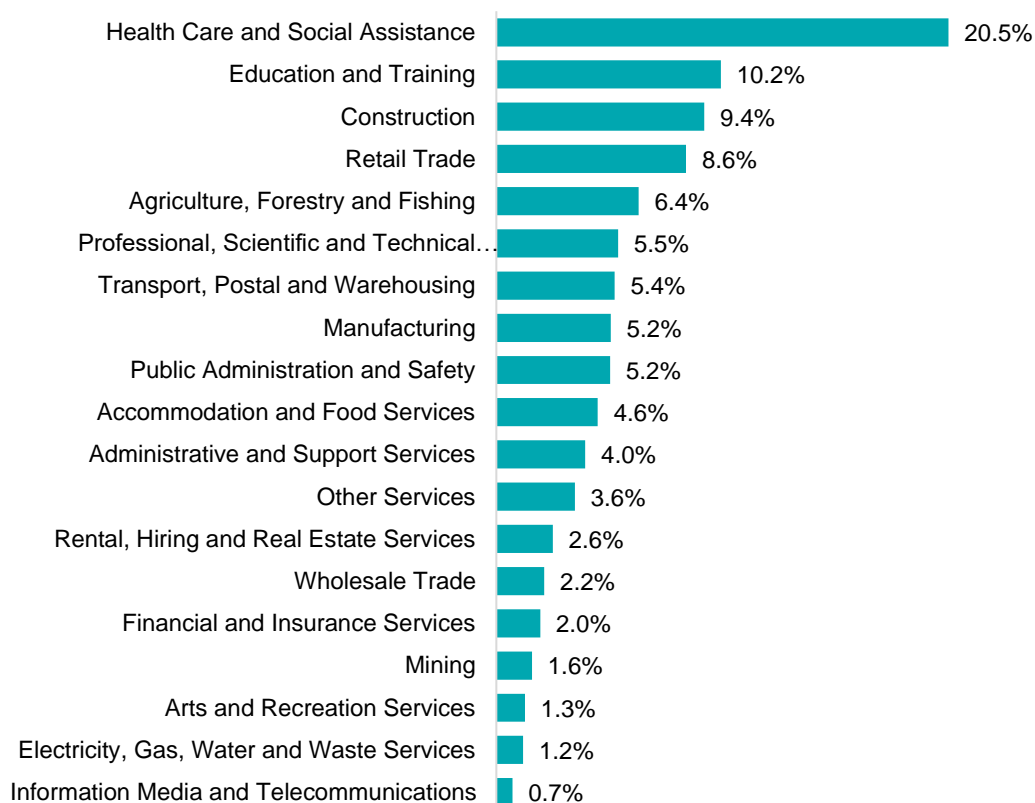
Employment characteristics by Industry

Which industries are youth (aged 15-24) employed in?



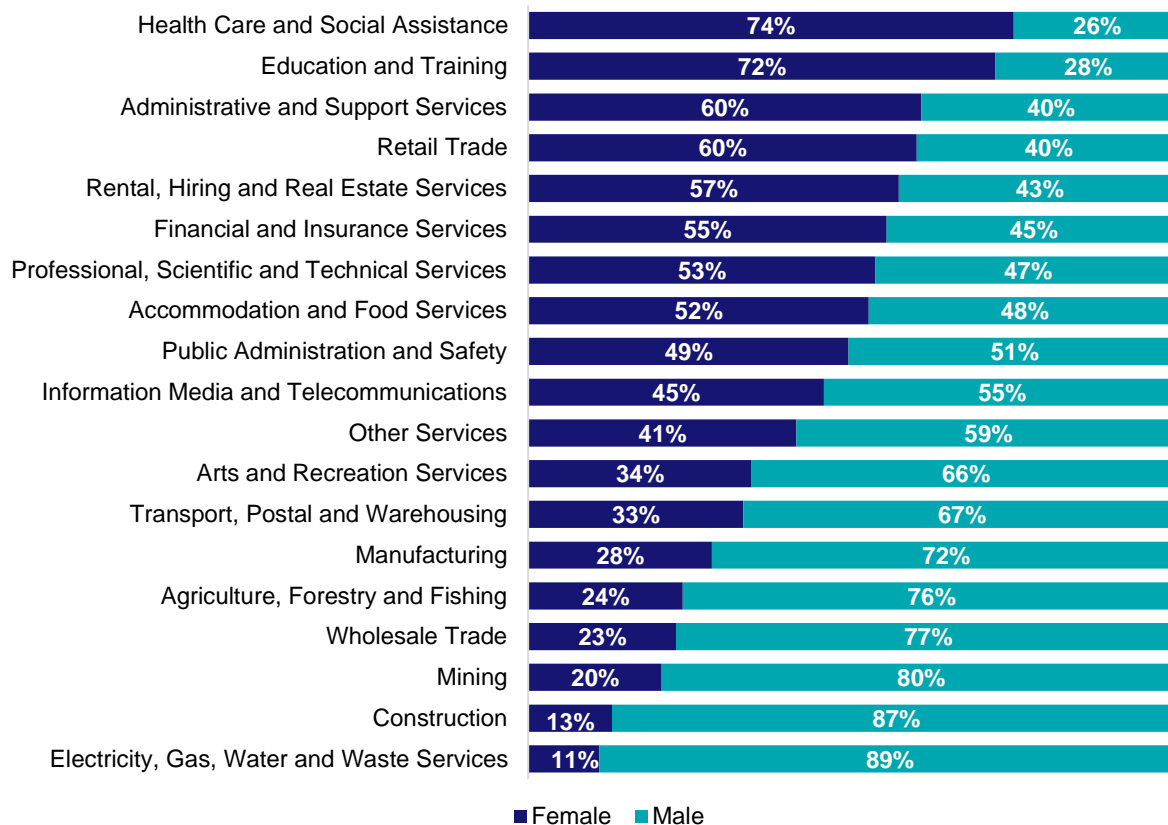
Source: ABS Census of Population and Housing, 2021.

Which industries are mature age persons (aged 55+) employed in?



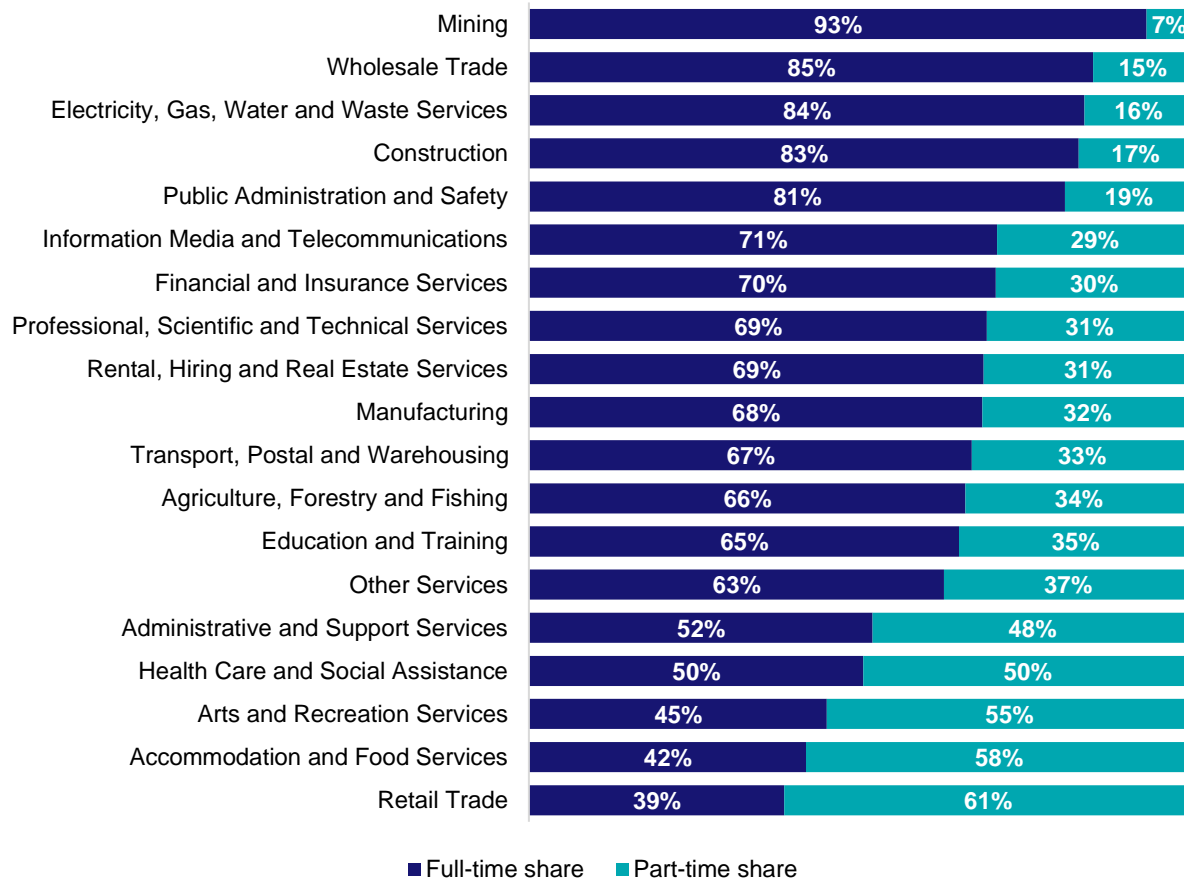
Source: ABS Census of Population and Housing, 2021. Note: SA2 level Census data have been aggregated to the Employment Region level.

Gender share by industry



Source: ABS Labour Force Survey, Detailed, four quarter averages, February 2025.

Full-time and part-time employment status by industry



Source: ABS Labour Force Survey, Detailed, four quarter averages, February 2025.

Appendix

Employment by industry, Wide Bay and Sunshine Coast, February 2025

Industry (in order of size)	Share of employment in the region Feb-25 (%)	Employed ('000)			Full-time share %	Part-time share %	Median age *
		Feb-25	Feb-24	Feb-20			
Health Care and Social Assistance	19.0	69.9	66.7	51.8	50.5	49.5	45
Construction	10.9	40.0	36.9	33.5	83.0	17.0	41
Retail Trade	10.6	39.0	37.0	31.2	38.5	61.5	37
Education and Training	8.6	31.6	28.6	29.6	64.9	35.1	47
Accommodation and Food Services	7.9	29.0	33.7	27.4	41.8	58.2	27
Professional, Scientific and Technical Services	5.7	20.8	21.6	17.0	69.1	30.9	44
Manufacturing	4.8	17.7	21.5	17.3	68.5	31.5	42
Transport, Postal and Warehousing	4.3	15.7	15.7	10.7	66.9	33.1	51
Other Services	4.3	15.6	14.3	13.6	62.7	37.3	40
Public Administration and Safety	3.8	14.0	16.9	14.3	80.9	19.1	47
Administrative and Support Services	3.7	13.6	11.7	8.7	51.9	48.1	46
Mining	2.6	9.7	11.1	7.1	93.2	6.8	44
Agriculture, Forestry and Fishing	2.6	9.7	14.6	12.1	65.9	34.1	48
Rental, Hiring and Real Estate Services	2.3	8.4	5.6	9.9	68.7	31.3	49
Arts and Recreation Services	2.1	7.7	6.6	6.8	45.0	55.0	38
Financial and Insurance Services	2.0	7.5	9.1	6.8	70.5	29.5	42
Electricity, Gas, Water and Waste Services	1.8	6.6	4.0	3.6	83.9	16.1	48
Wholesale Trade	1.6	6.0	5.5	6.5	85.2	14.8	46
Information Media and Telecommunications	1.2	4.6	2.6	1.8	70.7	29.3	43
All industries	100.0	367.1	364.0	309.8	61.3	38.7	43

Source: ABS Labour Force Survey, Detailed, four quarter averages, February 2025. *Median age is from the ABS Census of Population and Housing, 2021. Median age has been derived using aggregated SA2s for the Employment Region.

Note: Small cells should be viewed with caution due to small sample sizes and regional volatility.

Employment Region Industry profile

Wivenhoe Employment Region

Release date: 27 March 2025

Overview

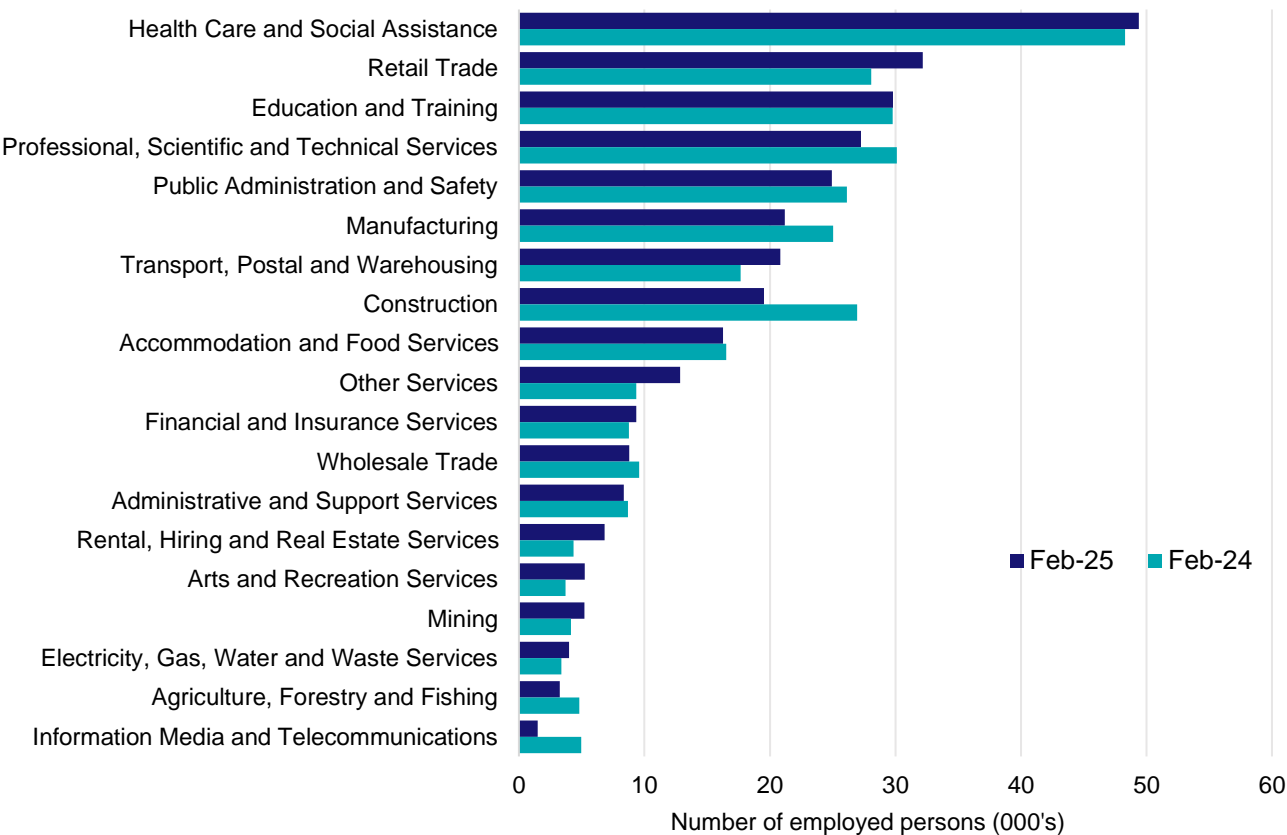
In February 2025, there were around 306,800 people employed in the Wivenhoe Employment Region. The 5 largest employing industries in the region were Health Care and Social Assistance, Retail Trade, Education and Training, Professional, Scientific and Technical Services, and Public Administration and Safety. Together these 5 industries accounted for 53% of employment in the region.

Over the year to February 2025, employment in:

- Health Care and Social Assistance rose by 2.3% to stand at 49,400
- Retail Trade rose by 14.6% to stand at 32,200
- Education and Training rose by 0.1% to stand at 29,800.

In Health Care and Social Assistance in the Wivenhoe Employment Region, 57% of workers were employed full-time; 76% were female; and the median age of the workforce was 41.

Employment by industry, February 2025 and February 2024



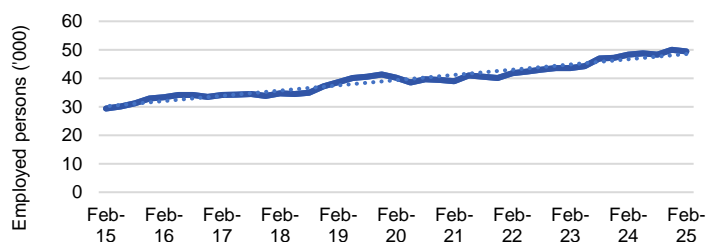
Source: ABS Labour Force Survey*, Detailed, four quarter averages, February 2025. Note that total employment for the region (four quarter averaged data) will not match data published in the Employment Region Labour Market dashboards (modelled estimates).

*ABS Labour Force Survey data are based on the combined SA4s of Brisbane-West and Ipswich.

Notes: Data are the latest available. A high degree of caution should be exercised when interpreting data at the regional level, particularly in regards to percentage changes, given the volatility of the underlying data. For any enquiries related to the data in this report, please contact RegionalWorkforceAssessment@jobsandskills.gov.au

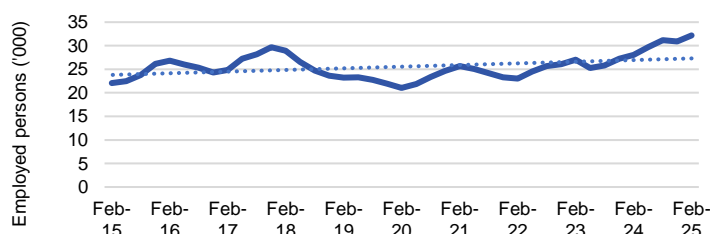
Five largest employing industries: key statistics

Health Care and Social Assistance



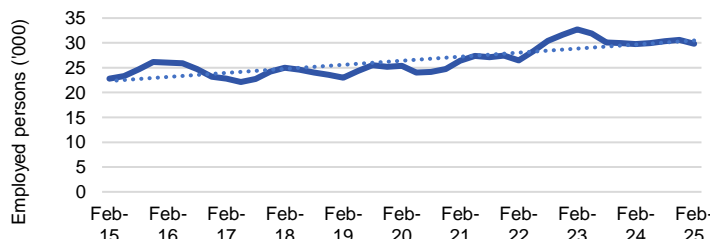
Number employed (Feb-25):	49,400
1 year employment change:	2.3%
5 year employment change:	23.0%
10 year employment change:	68.2%
Youth share of employment:	10.5%
Mature age share of employment:	17.4%

Retail Trade



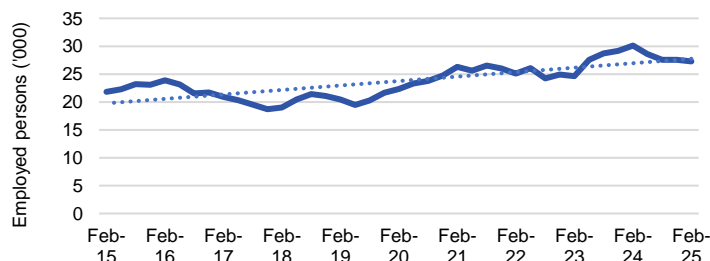
Number employed (Feb-25):	32,200
1 year employment change:	14.6%
5 year employment change:	53.0%
10 year employment change:	46.0%
Youth share of employment:	19.4%
Mature age share of employment:	6.5%

Education and Training



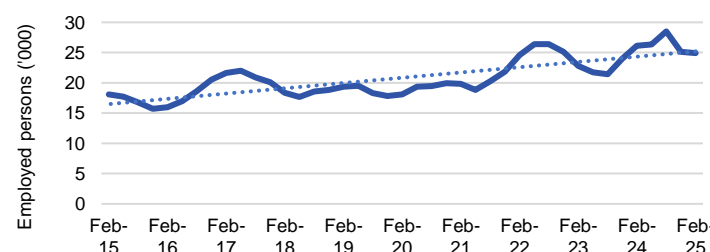
Number employed (Feb-25):	29,800
1 year employment change:	0.1%
5 year employment change:	17.3%
10 year employment change:	30.6%
Youth share of employment:	6.6%
Mature age share of employment:	12.5%

Professional, Scientific and Technical Services



Number employed (Feb-25):	27,300
1 year employment change:	-9.5%
5 year employment change:	21.9%
10 year employment change:	24.9%
Youth share of employment:	4.9%
Mature age share of employment:	8.3%

Public Administration and Safety



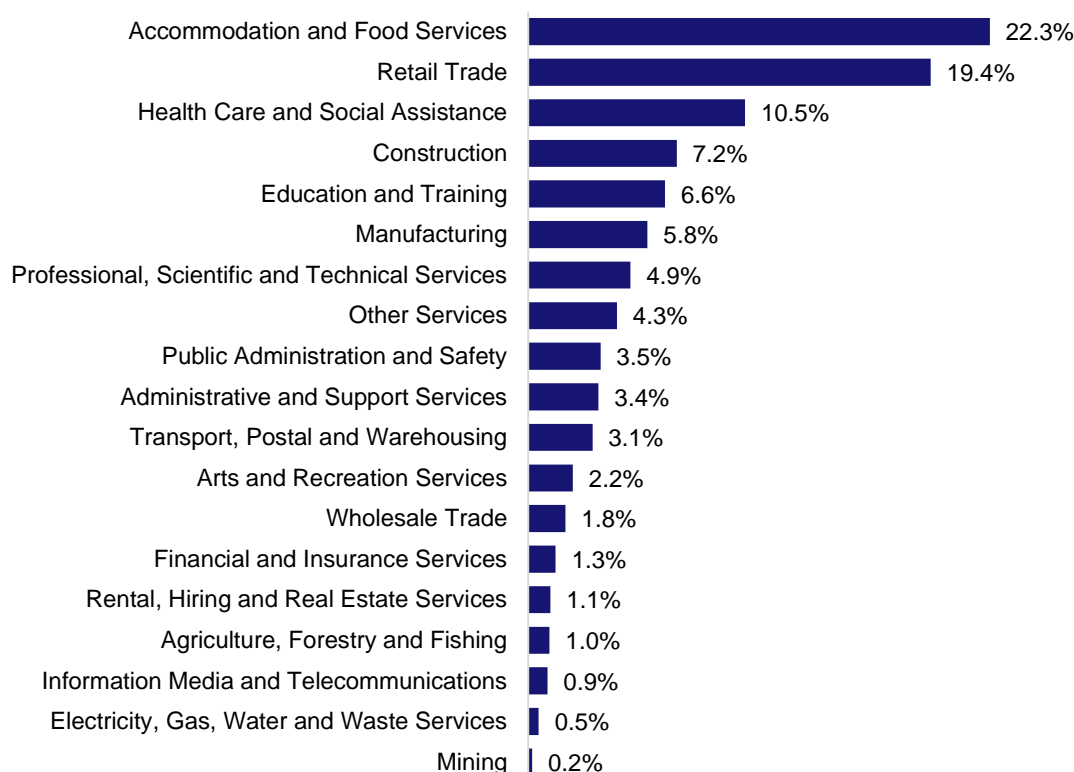
Number employed (Feb-25):	24,900
1 year employment change:	-4.6%
5 year employment change:	37.7%
10 year employment change:	37.9%
Youth share of employment:	3.5%
Mature age share of employment:	7.9%

Source: ABS Labour Force Survey, Detailed, four quarter averages, February 2025, except youth and mature age data which are from the ABS Census of Population and Housing, 2021.

Notes: In each chart, the solid line is the level of employment and the dotted line is a simple linear trend line for the 10 year period. Given the volatility of the underlying data, employment estimates should be treated with a high degree of caution. Particular focus should be placed on the employment series over time to ascertain more reliable long-term growth trends.

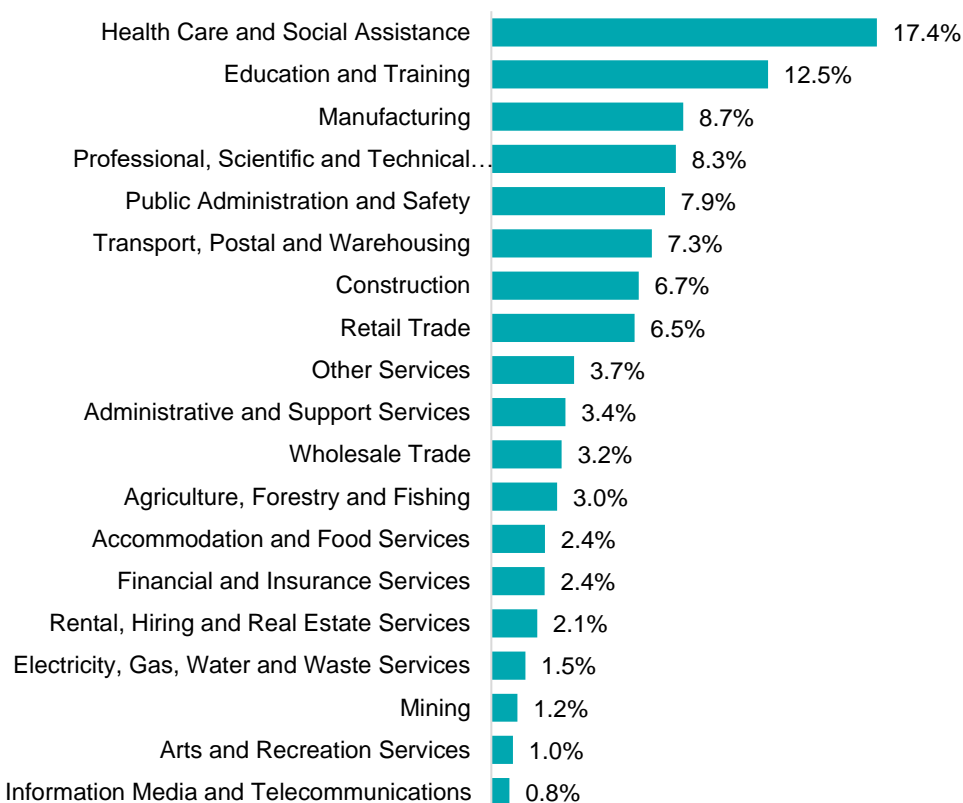
Employment characteristics by Industry

Which industries are youth (aged 15-24) employed in?



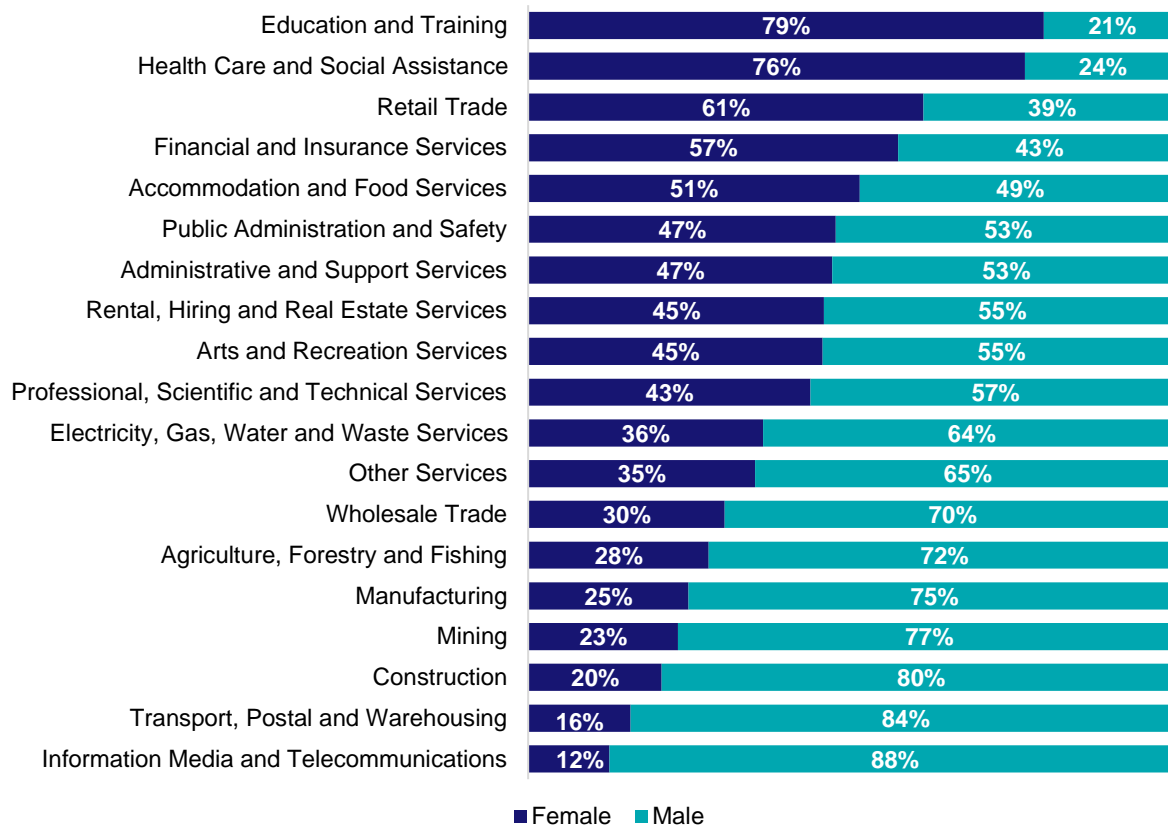
Source: ABS Census of Population and Housing, 2021.

Which industries are mature age persons (aged 55+) employed in?



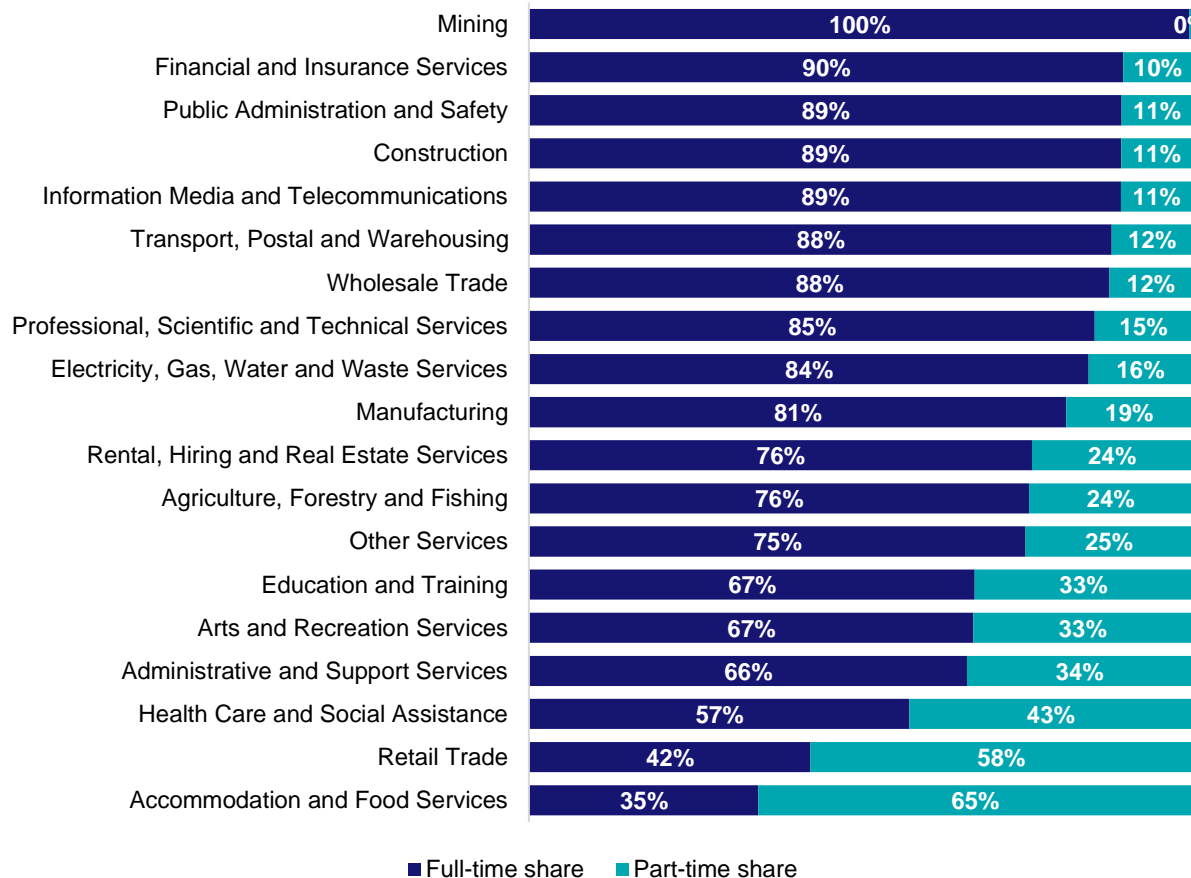
Source: ABS Census of Population and Housing, 2021. Note: SA2 level Census data have been aggregated to the Employment Region level.

Gender share by industry



Source: ABS Labour Force Survey, Detailed, four quarter averages, February 2025.

Full-time and part-time employment status by industry



Source: ABS Labour Force Survey, Detailed, four quarter averages, February 2025.

Appendix

Employment by industry, Wivenhoe, February 2025

Industry (in order of size)	Share of employment in the region Feb-25 (%)	Employed ('000)			Full-time share %	Part-time share %	Median age *
		Feb-25	Feb-24	Feb-20			
Health Care and Social Assistance	16.1	49.4	48.3	40.2	57.4	42.6	41
Retail Trade	10.5	32.2	28.1	21.0	42.5	57.5	31
Education and Training	9.7	29.8	29.8	25.4	67.3	32.7	43
Professional, Scientific and Technical Services	8.9	27.3	30.1	22.4	85.4	14.6	41
Public Administration and Safety	8.1	24.9	26.1	18.1	89.5	10.5	42
Manufacturing	6.9	21.2	25.0	23.3	81.1	18.9	42
Transport, Postal and Warehousing	6.8	20.8	17.7	14.6	88.0	12.0	43
Construction	6.4	19.5	27.0	21.3	89.4	10.6	38
Accommodation and Food Services	5.3	16.3	16.5	20.1	34.6	65.4	21
Other Services	4.2	12.8	9.4	11.9	75.0	25.0	37
Financial and Insurance Services	3.0	9.3	8.8	7.4	89.7	10.3	40
Wholesale Trade	2.9	8.8	9.6	9.3	87.7	12.3	43
Administrative and Support Services	2.7	8.3	8.7	9.2	66.1	33.9	39
Rental, Hiring and Real Estate Services	2.2	6.8	4.4	3.6	75.9	24.1	42
Arts and Recreation Services	1.7	5.3	3.7	6.2	67.1	32.9	31
Mining	1.7	5.2	4.1	3.9	99.7	0.3	43
Electricity, Gas, Water and Waste Services	1.3	4.0	3.4	3.2	84.5	15.5	43
Agriculture, Forestry and Fishing	1.1	3.3	4.8	2.3	75.5	24.5	48
Information Media and Telecommunications	0.5	1.5	5.0	2.0	89.4	10.6	38
All industries	100.0	306.8	310.3	265.5	71.3	28.7	39

Source: ABS Labour Force Survey, Detailed, four quarter averages, February 2025. *Median age is from the ABS Census of Population and Housing, 2021. Median age has been derived using aggregated SA2s for the Employment Region.

Note: Small cells should be viewed with caution due to small sample sizes and regional volatility.