



Australian Government



Jobs and Skills Australia

Industry profile

Australian Capital Territory

Release date: 27 March 2025

Overview

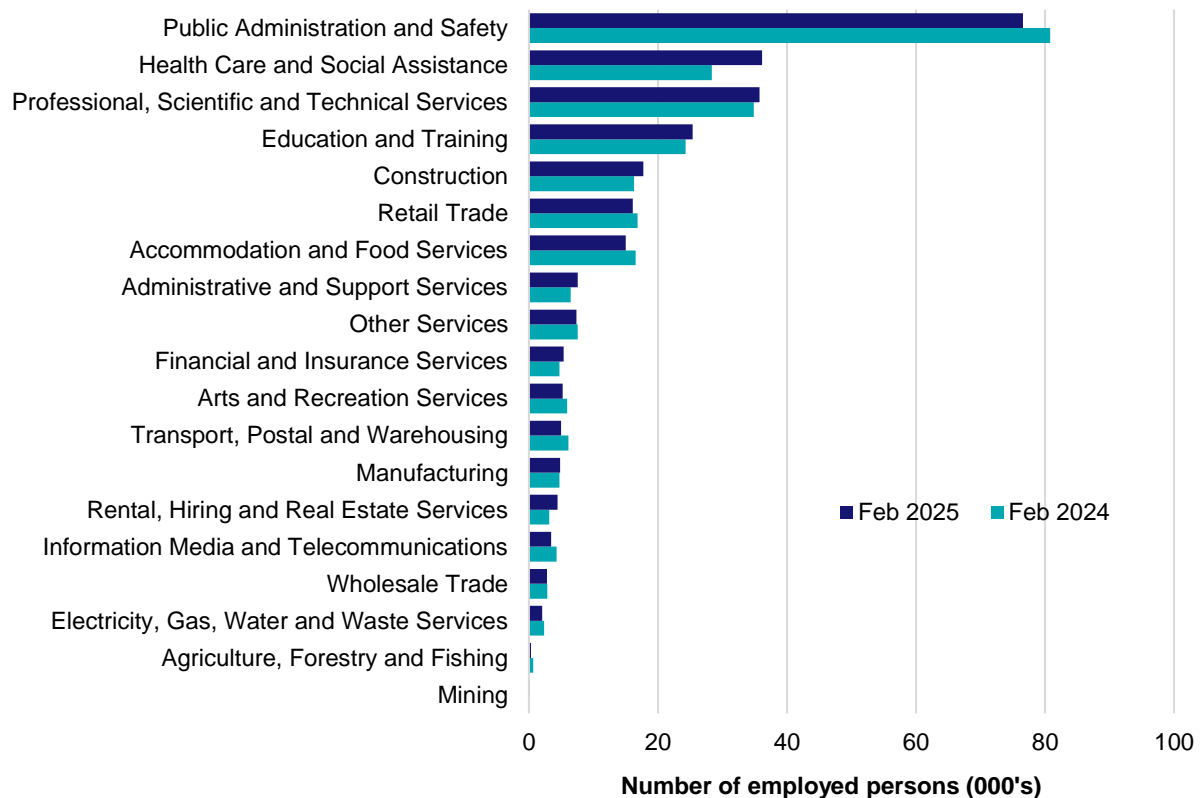
In February 2025, there were around 271,300 people employed in Australian Capital Territory. The 5 largest employing industries in Australian Capital Territory were Public Administration and Safety, Health Care and Social Assistance, Professional, Scientific and Technical Services, Education and Training and Construction. Together these 5 industries accounted for 71% of all employment.

Over the year to February 2025, employment in:

- Public Administration and Safety fell by 5.2% to stand at 76,600
- Health Care and Social Assistance rose by 27.6% to stand at 36,100
- Professional, Scientific and Technical Services rose by 2.6% to stand at 35,700.

In Public Administration and Safety in Australian Capital Territory, 90% of workers were employed full-time; 54% were Female; and the median age of the workforce was 41.

Employment by industry, February 2025 and February 2024

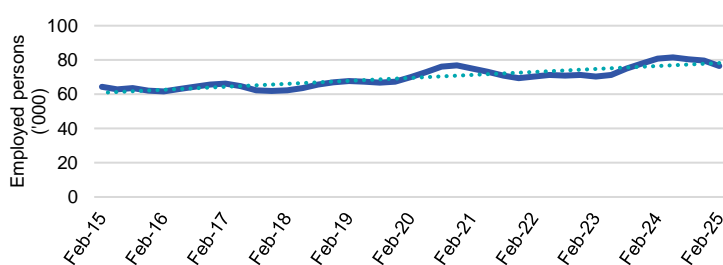


Source: ABS Labour Force Survey, Detailed, four quarter averages, February 2025. Note that total employment (four quarter averaged data) may not match data published in the Labour Market dashboards (6 month averaged data).

Note: For any enquiries related to the data in this report, contact RegionalWorkforceAssessment@jobsandskills.gov.au

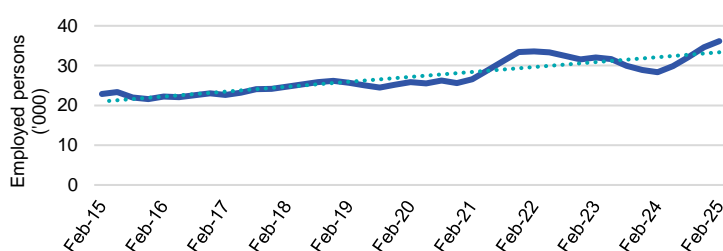
Five largest employing industries: key statistics

Public Administration and Safety



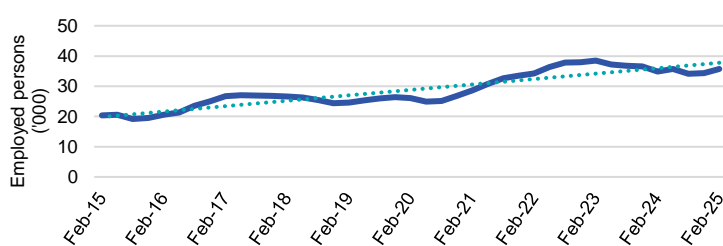
Number employed (Feb-25):	76,600
1 year employment change:	-5.2%
5 year employment change:	9.4%
10 year employment change:	19.1%
Youth share of employment:	14.0%
Mature age share of employment:	29.9%

Health Care and Social Assistance



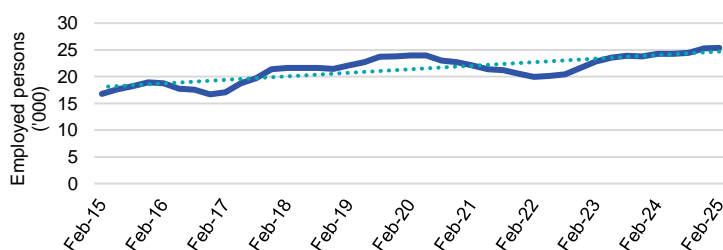
Number employed (Feb-25):	36,100
1 year employment change:	27.6%
5 year employment change:	40.0%
10 year employment change:	58.2%
Youth share of employment:	9.3%
Mature age share of employment:	13.2%

Professional, Scientific and Technical Services



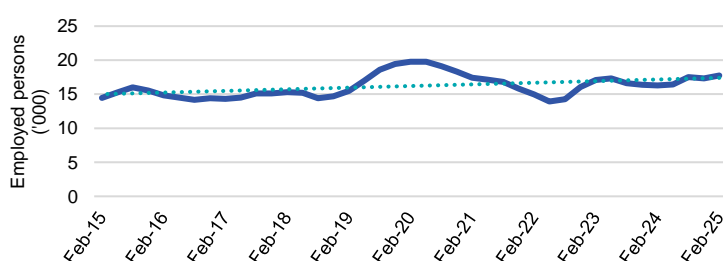
Number employed (Feb-25):	35,700
1 year employment change:	2.6%
5 year employment change:	37.2%
10 year employment change:	75.7%
Youth share of employment:	7.4%
Mature age share of employment:	11.4%

Education and Training



Number employed (Feb-25):	25,400
1 year employment change:	4.5%
5 year employment change:	5.9%
10 year employment change:	51.4%
Youth share of employment:	8.6%
Mature age share of employment:	11.4%

Construction



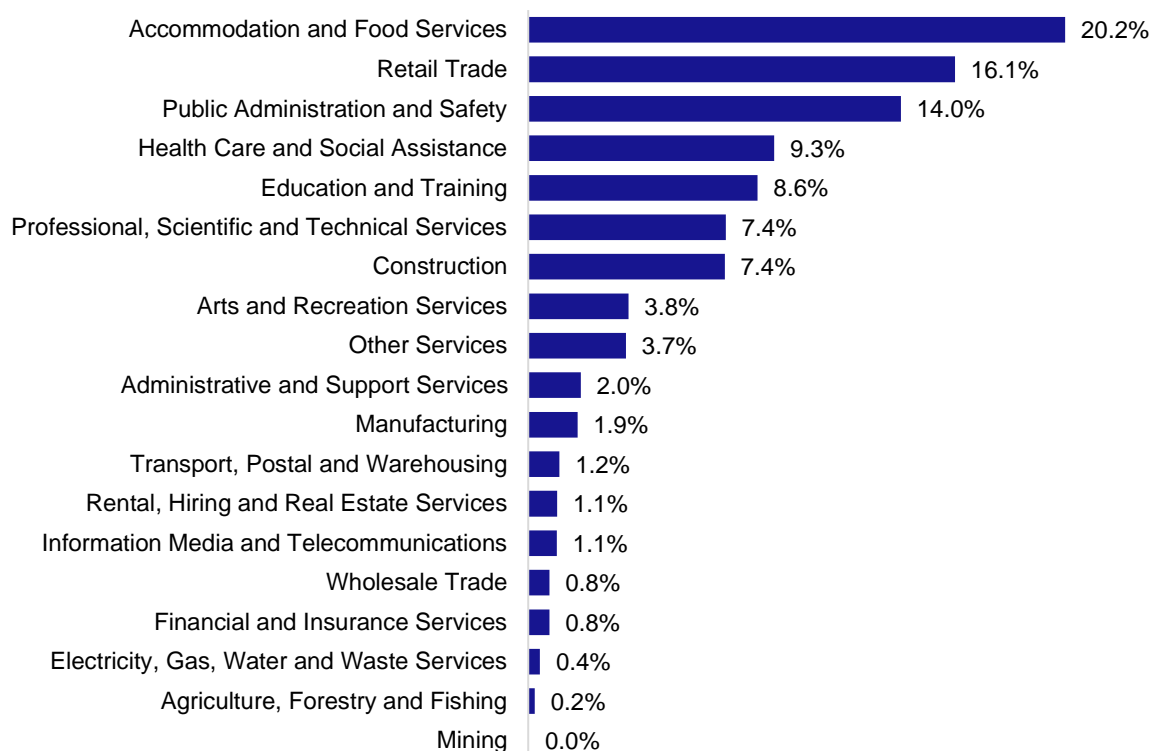
Number employed (Feb-25):	17,800
1 year employment change:	8.9%
5 year employment change:	-10.2%
10 year employment change:	23.0%
Youth share of employment:	7.4%
Mature age share of employment:	5.8%

Source: ABS Labour Force Survey, Detailed, four quarter averages, February 2025, except youth and mature age data which are from the ABS Census of Population and Housing, 2021.

Note: In each chart, the solid line is the level of employment and the dotted line is a simple linear trend line for the 10 year period.

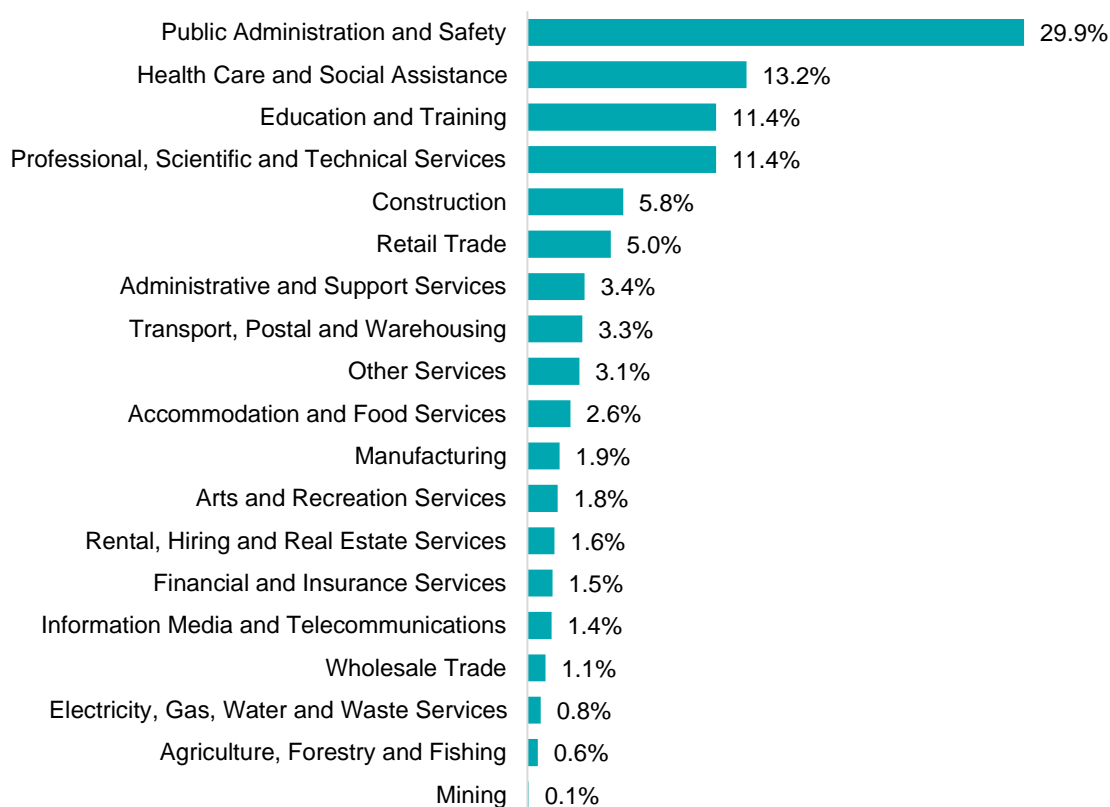
Employment characteristics by Industry

Which industries are youth (aged 15-24) employed in?



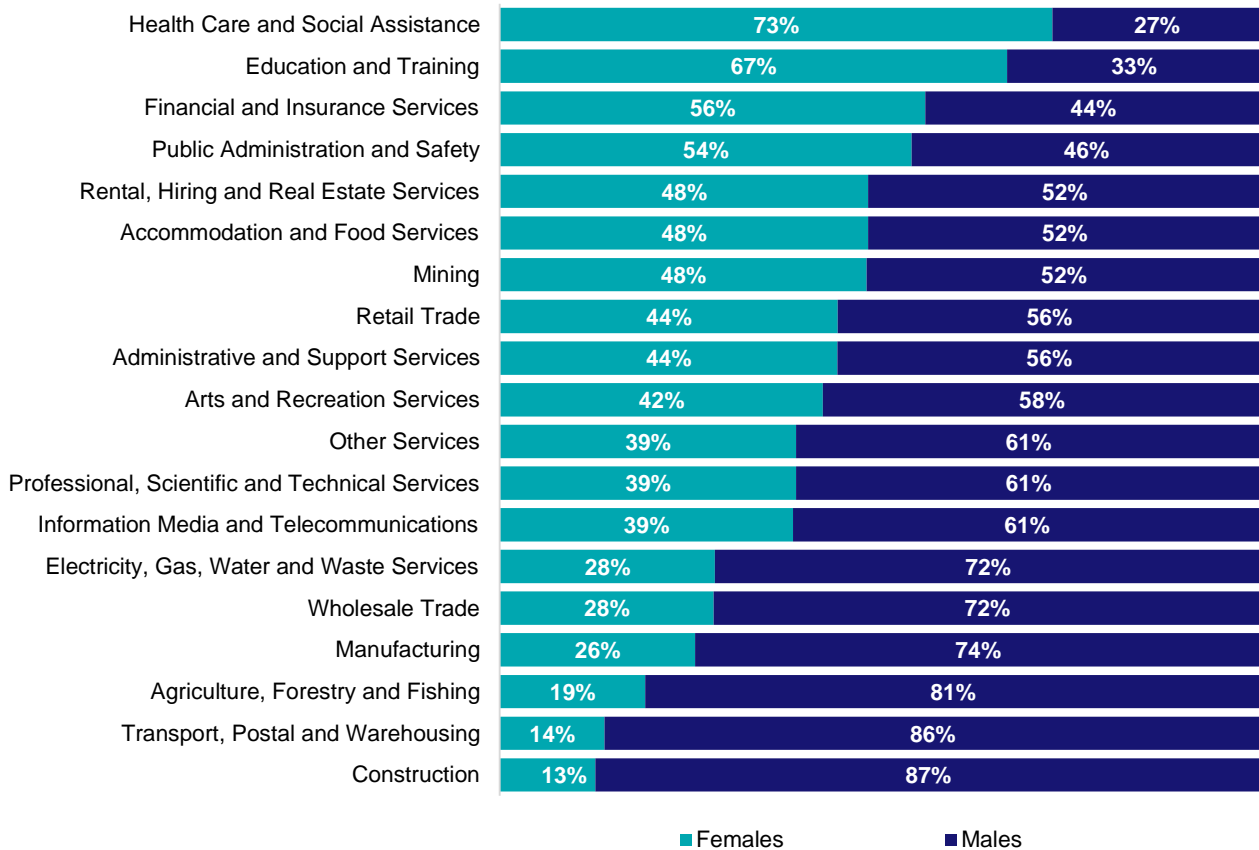
Source: ABS Census of Population and Housing, 2021.

Which industries are mature age persons (aged 55+) employed in?



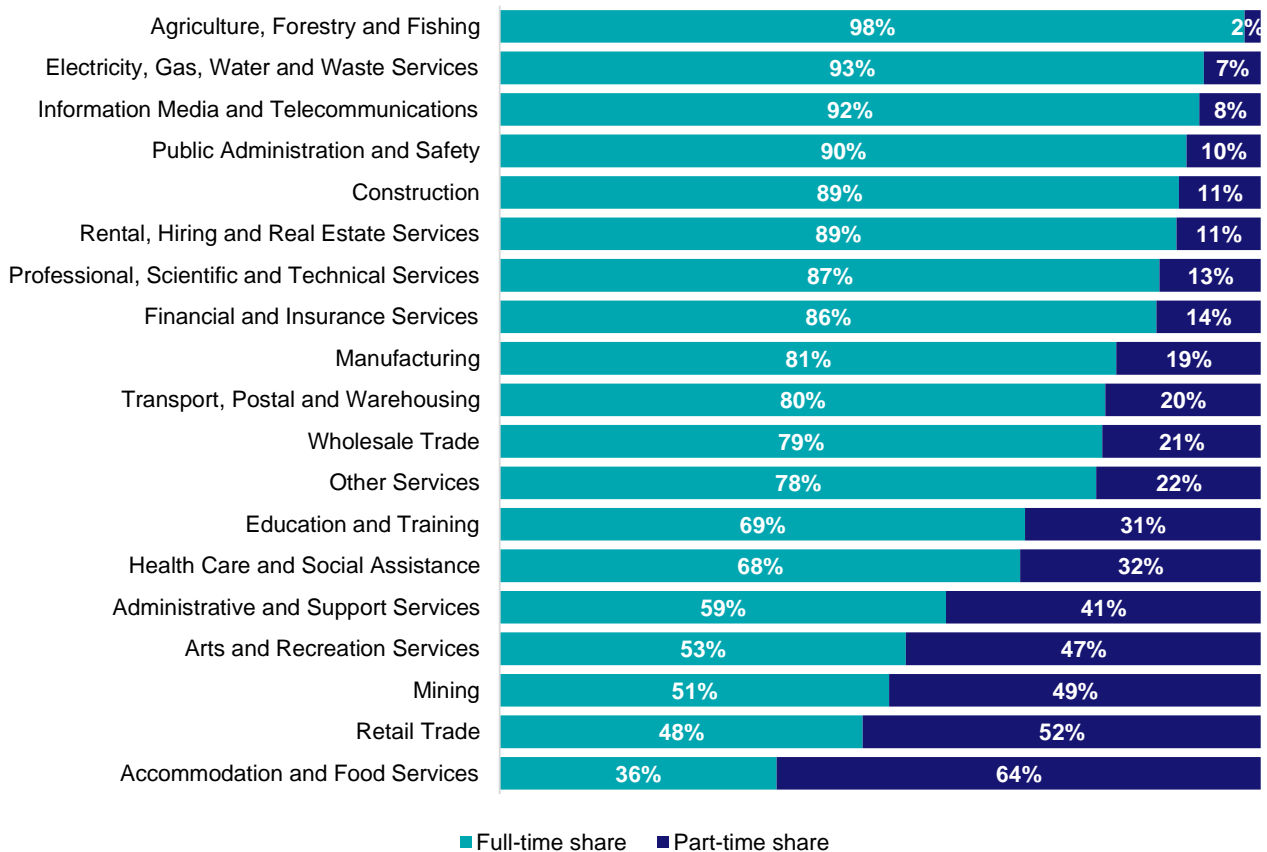
Source: ABS Census of Population and Housing, 2021.

Gender share by industry



Source: ABS Labour Force Survey, Detailed, four quarter averages, February 2025.

Full-time and part-time employment status by industry



Source: ABS Labour Force Survey, Detailed, four quarter averages, February 2025.

Appendix

Employment by industry, Australian Capital Territory, February 2025

Industry (in order of size)	Share of emp't Feb-25 (%)	Employed ('000)			1 year change		5 year change		Median age *
		Feb-25	Feb-24	Feb-20	('000)	%	('000)	%	
Public Administration and Safety	28.2	76.6	80.8	70.0	-4.2	-5.2	6.6	9.4	41
Health Care and Social Assistance	13.3	36.1	28.3	25.8	7.8	27.6	10.3	40.0	38
Professional, Scientific and Technical Services	13.2	35.7	34.8	26.0	0.9	2.6	9.7	37.2	38
Education and Training	9.4	25.4	24.3	24.0	1.1	4.5	1.4	5.9	40
Construction	6.5	17.8	16.3	19.8	1.4	8.9	-2.0	-10.2	35
Retail Trade	5.9	16.1	16.8	15.3	-0.7	-4.4	0.8	5.0	28
Accommodation and Food Services	5.5	15.0	16.5	14.7	-1.5	-9.2	0.3	2.1	25
Administrative and Support Services	2.8	7.6	6.5	8.1	1.1	17.5	-0.5	-5.9	39
Other Services	2.7	7.4	7.5	7.5	-0.2	-2.2	-0.1	-1.3	36
Financial and Insurance Services	2.0	5.4	4.7	3.4	0.6	13.4	2.0	58.9	39
Arts and Recreation Services	1.9	5.2	5.9	4.4	-0.7	-11.8	0.8	18.1	32
Transport, Postal and Warehousing	1.8	5.0	6.1	5.5	-1.1	-18.7	-0.5	-9.0	41
Manufacturing	1.8	4.8	4.7	3.8	0.1	1.6	1.0	25.9	38
Rental, Hiring and Real Estate Services	1.6	4.5	3.2	3.3	1.3	40.5	1.2	36.3	38
Information Media and Telecommunications	1.3	3.4	4.3	3.9	-0.9	-19.9	-0.5	-11.6	39
Wholesale Trade	1.0	2.8	2.9	3.5	0.0	-1.7	-0.7	-20.2	40
Electricity, Gas, Water and Waste Services	0.8	2.0	2.4	1.7	-0.3	-13.2	0.4	20.7	39
Agriculture, Forestry and Fishing	0.1	0.3	0.7	0.3	-0.3	-51.3	0.1	25.2	41
Mining	0.0	0.1	0.1	0.1	0.1	144.1	0.1	NA	43
All Industries	100.0	271.3	266.9	240.9	4.4	1.6	30.3	12.6	38

Source: ABS Labour Force Survey, Detailed, four quarter averages, February 2025. *Median age is from the ABS Census of Population and Housing, 2021.

Employment Region Industry profile

Capital Region Employment Region

Release date: 27 March 2025

Overview

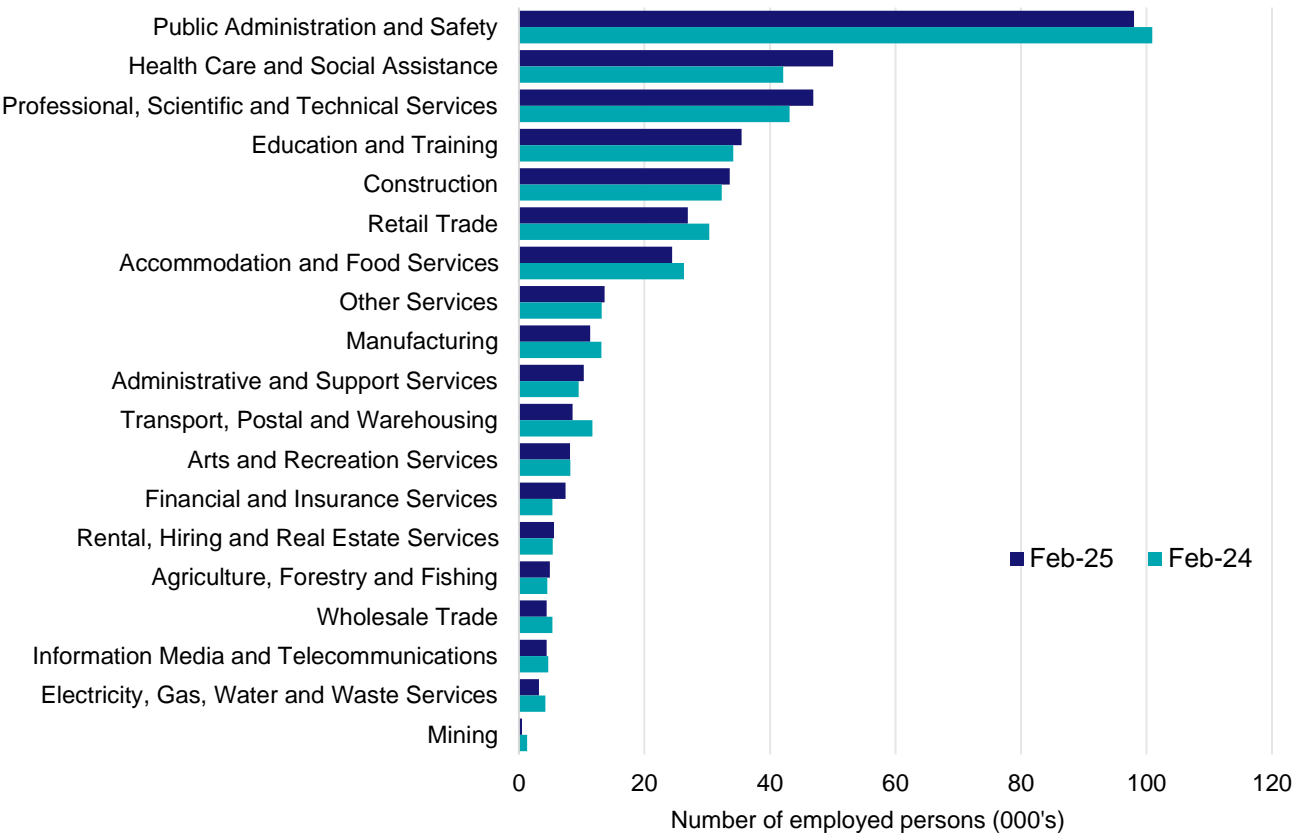
In February 2025, there were around 397,900 people employed in the Capital Region Employment Region. The 5 largest employing industries in the region were Public Administration and Safety, Health Care and Social Assistance, Professional, Scientific and Technical Services, Education and Training, and Construction. Together these 5 industries accounted for 66% of employment in the region.

Over the year to February 2025, employment in:

- Public Administration and Safety fell by 2.9% to stand at 98,000
- Health Care and Social Assistance rose by 18.9% to stand at 50,100
- Professional, Scientific and Technical Services rose by 8.7% to stand at 46,900.

In Public Administration and Safety in the Capital Region Employment Region, 89% of workers were employed full-time; 55% were female; and the median age of the workforce was 41.

Employment by industry, February 2025 and February 2024



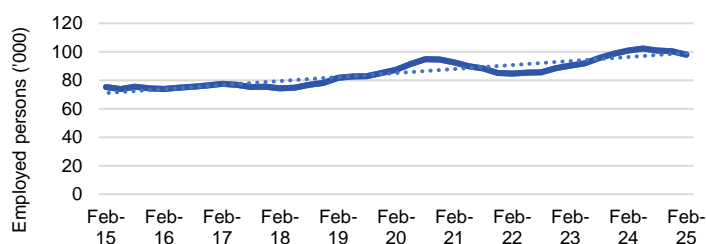
Source: ABS Labour Force Survey*, Detailed, four quarter averages, February 2025. Note that total employment for the region (four quarter averaged data) will not match data published in the Employment Region Labour Market dashboards (modelled estimates).

*ABS Labour Force Survey data are based on the combined SA4s of Australian Capital Territory and Capital Region.

Notes: Data are the latest available. A high degree of caution should be exercised when interpreting data at the regional level, particularly in regards to percentage changes, given the volatility of the underlying data. For any enquiries related to the data in this report, please contact RegionalWorkforceAssessment@jobsandskills.gov.au

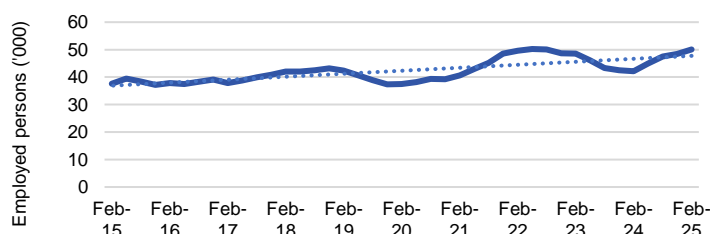
Five largest employing industries: key statistics

Public Administration and Safety



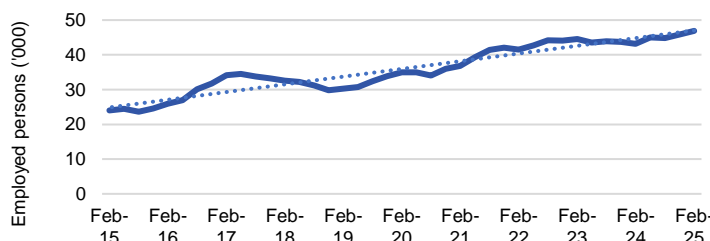
Number employed (Feb-25):	98,000
1 year employment change:	-2.9%
5 year employment change:	12.2%
10 year employment change:	30.2%
Youth share of employment:	12.4%
Mature age share of employment:	25.0%

Health Care and Social Assistance



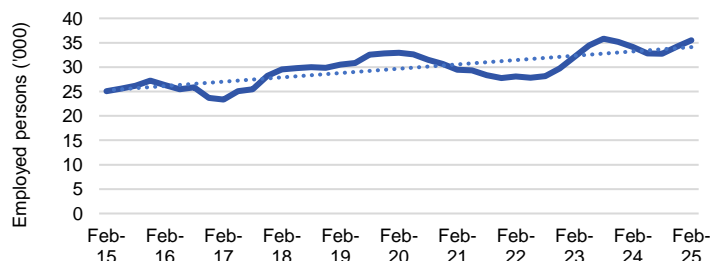
Number employed (Feb-25):	50,100
1 year employment change:	18.9%
5 year employment change:	33.7%
10 year employment change:	33.2%
Youth share of employment:	8.9%
Mature age share of employment:	13.0%

Professional, Scientific and Technical Services



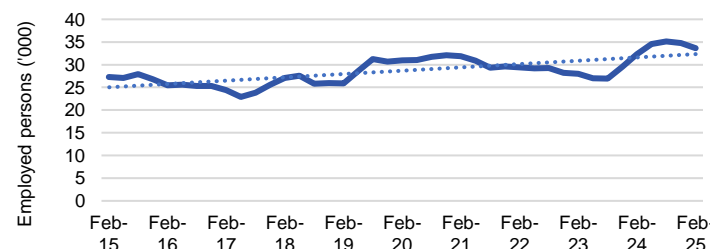
Number employed (Feb-25):	46,900
1 year employment change:	8.7%
5 year employment change:	34.0%
10 year employment change:	95.0%
Youth share of employment:	6.6%
Mature age share of employment:	9.6%

Education and Training



Number employed (Feb-25):	35,500
1 year employment change:	3.9%
5 year employment change:	7.6%
10 year employment change:	41.6%
Youth share of employment:	8.0%
Mature age share of employment:	10.2%

Construction



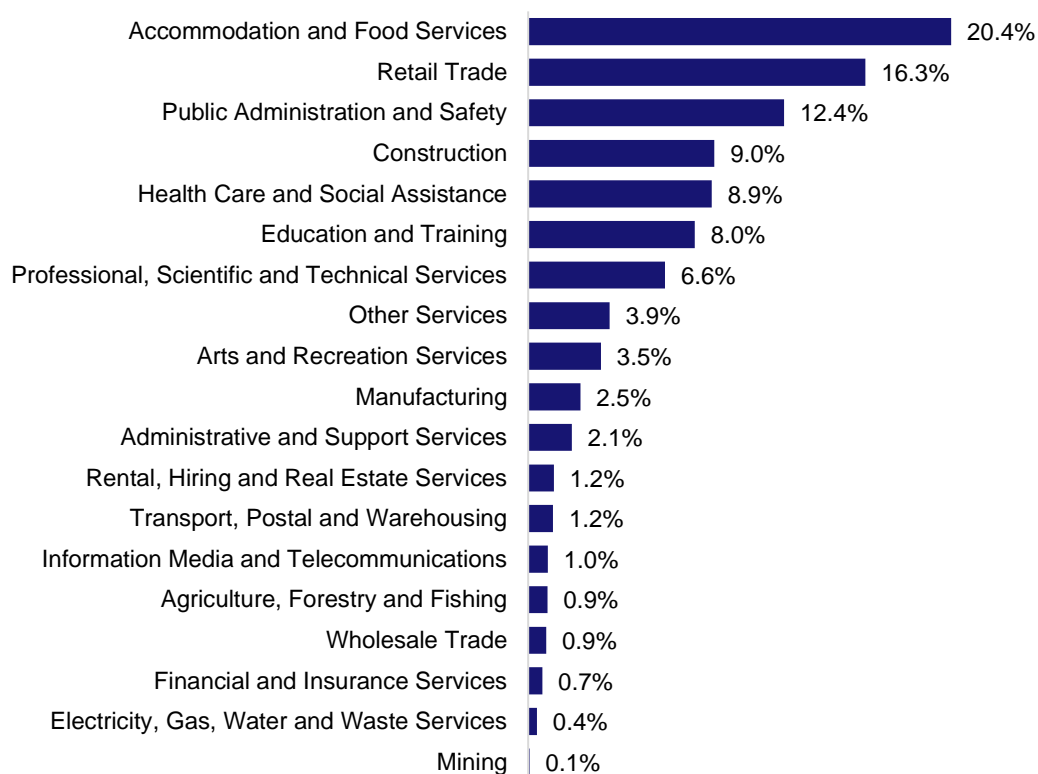
Number employed (Feb-25):	33,600
1 year employment change:	4.0%
5 year employment change:	8.5%
10 year employment change:	23.2%
Youth share of employment:	9.0%
Mature age share of employment:	6.7%

Source: ABS Labour Force Survey, Detailed, four quarter averages, February 2025, except youth and mature age data which are from the ABS Census of Population and Housing, 2021.

Notes: In each chart, the solid line is the level of employment and the dotted line is a simple linear trend line for the 10 year period. Given the volatility of the underlying data, employment estimates should be treated with a high degree of caution. Particular focus should be placed on the employment series over time to ascertain more reliable long-term growth trends.

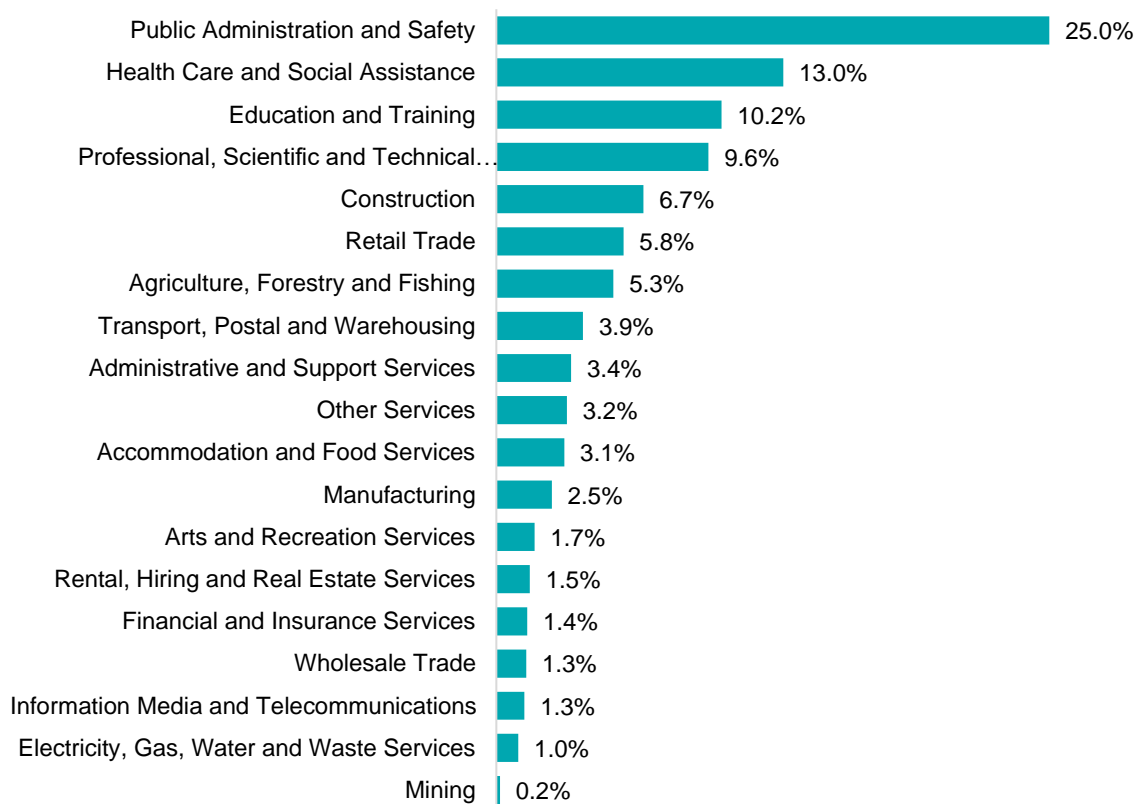
Employment characteristics by Industry

Which industries are youth (aged 15-24) employed in?



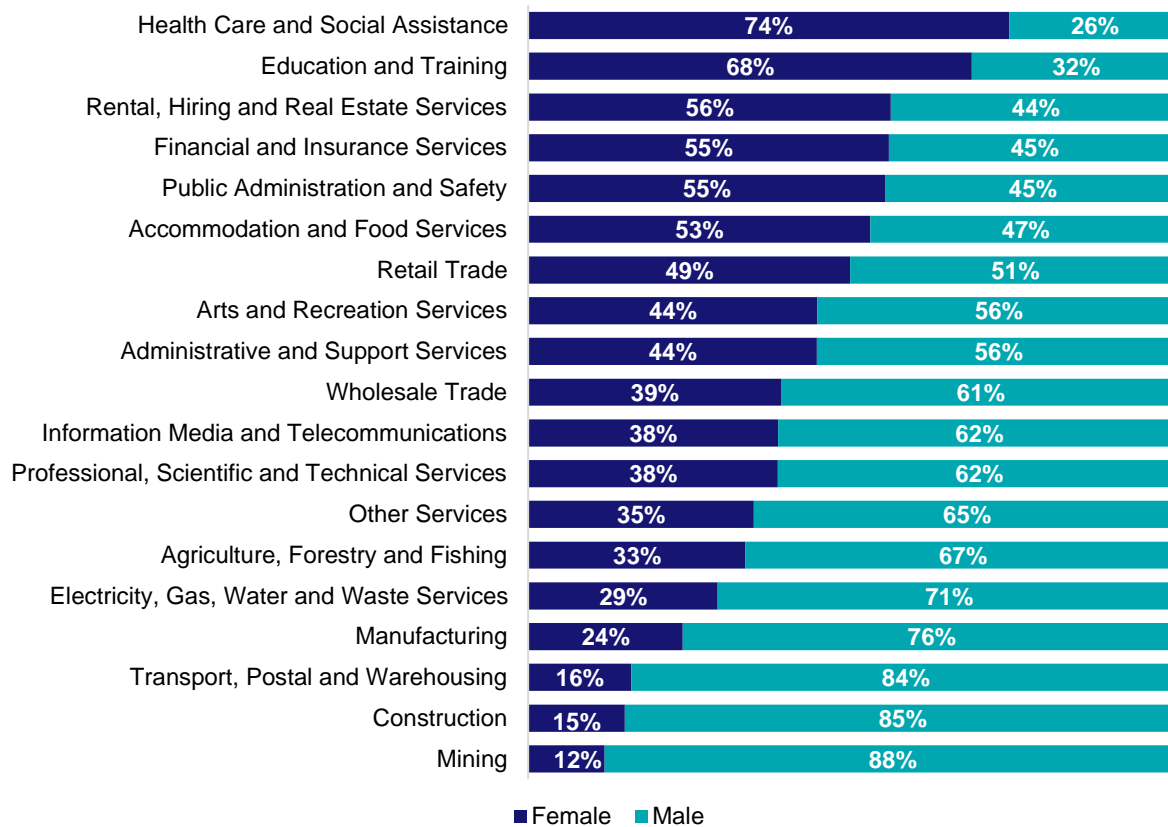
Source: ABS Census of Population and Housing, 2021.

Which industries are mature age persons (aged 55+) employed in?



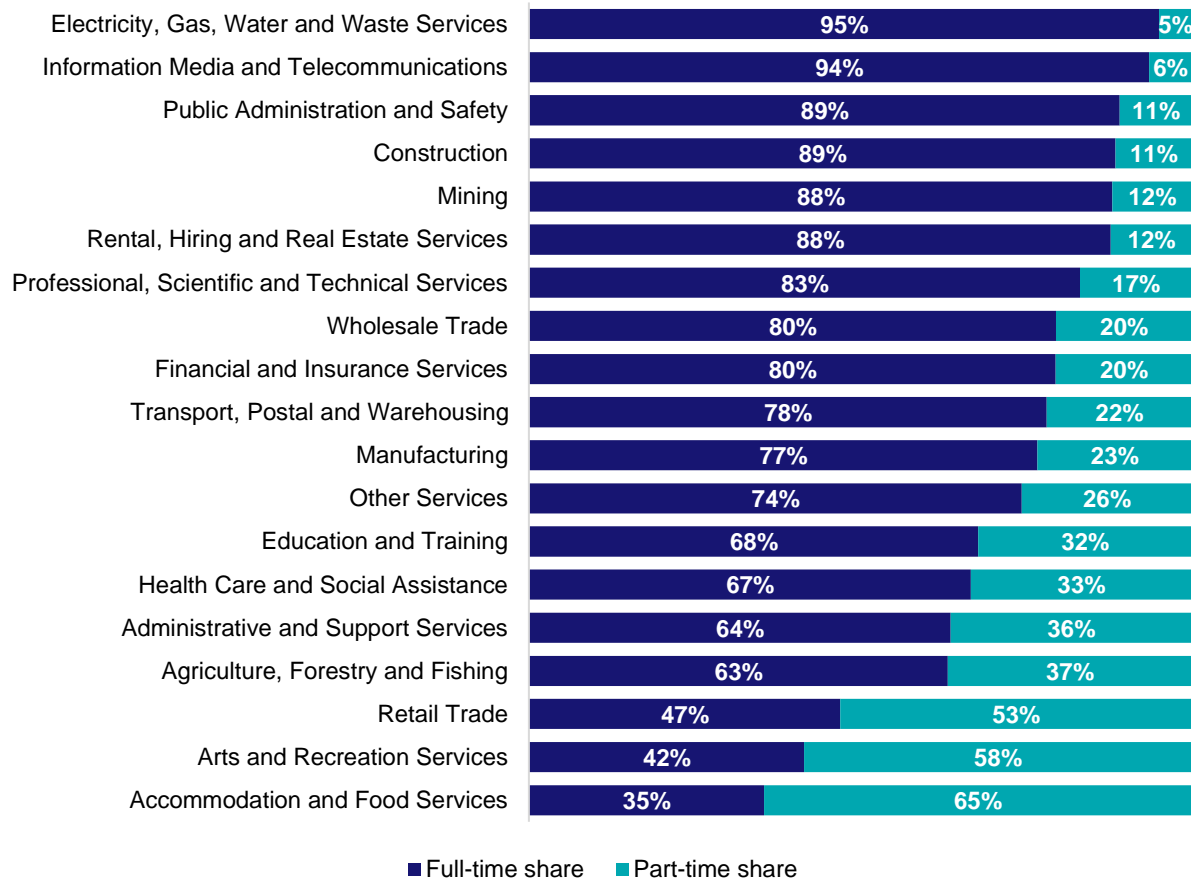
Source: ABS Census of Population and Housing, 2021. Note: SA2 level Census data have been aggregated to the Employment Region level.

Gender share by industry



Source: ABS Labour Force Survey, Detailed, four quarter averages, February 2025.

Full-time and part-time employment status by industry



Source: ABS Labour Force Survey, Detailed, four quarter averages, February 2025.

Appendix

Employment by industry, Capital Region, February 2025

Industry (in order of size)	Share of employment in the region Feb-25 (%)	Employed ('000)			Full-time share %	Part-time share %	Median age *
		Feb-25	Feb-24	Feb-20			
Public Administration and Safety	24.6	98.0	100.9	87.4	89.2	10.8	41
Health Care and Social Assistance	12.6	50.1	42.1	37.4	66.7	33.3	39
Professional, Scientific and Technical Services	11.8	46.9	43.2	35.0	83.2	16.8	39
Education and Training	8.9	35.5	34.1	33.0	67.8	32.2	40
Construction	8.4	33.6	32.3	31.0	88.6	11.4	36
Retail Trade	6.8	26.9	30.3	28.0	47.0	53.0	29
Accommodation and Food Services	6.1	24.4	26.3	26.3	35.5	64.5	24
Other Services	3.4	13.7	13.2	12.9	74.4	25.6	36
Manufacturing	2.9	11.3	13.2	9.0	76.8	23.2	38
Administrative and Support Services	2.6	10.3	9.5	11.6	63.7	36.3	39
Transport, Postal and Warehousing	2.1	8.5	11.7	10.2	78.2	21.8	42
Arts and Recreation Services	2.0	8.1	8.2	5.4	41.5	58.5	30
Financial and Insurance Services	1.9	7.4	5.3	4.7	79.5	20.5	38
Rental, Hiring and Real Estate Services	1.4	5.6	5.4	3.5	87.9	12.1	36
Agriculture, Forestry and Fishing	1.2	4.9	4.5	6.8	63.2	36.8	56
Wholesale Trade	1.1	4.4	5.3	5.4	79.6	20.4	42
Information Media and Telecommunications	1.1	4.4	4.7	5.6	93.6	6.4	38
Electricity, Gas, Water and Waste Services	0.8	3.2	4.2	3.5	95.2	4.8	40
Mining	0.1	0.5	1.3	1.2	88.1	11.9	39
All industries	100.0	397.9	395.8	357.8	74.3	25.7	38

Source: ABS Labour Force Survey, Detailed, four quarter averages, February 2025. *Median age is from the ABS Census of Population and Housing, 2021. Median age has been derived using aggregated SA2s for the Employment Region.

Note: Small cells should be viewed with caution due to small sample sizes and regional volatility.