



Australian Government



Jobs and Skills Australia

Industry profile

Australia

Release date: 27 March 2025

Overview

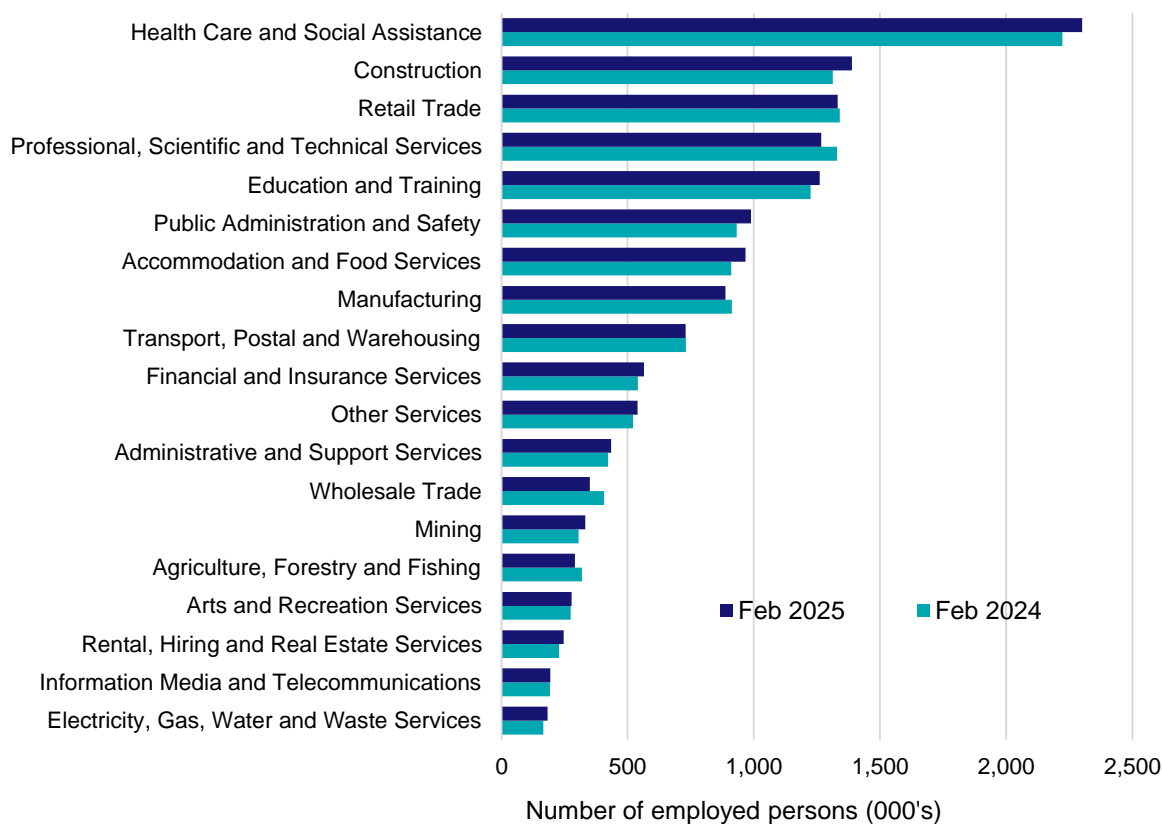
In February 2025, there were around 14,527,500 people employed in Australia. The 5 largest employing industries nationally were Health Care and Social Assistance, Construction, Retail Trade, Professional, Scientific and Technical Services and Education and Training. Together these 5 industries accounted for 52% of all employment.

Over the year to February 2025, employment in:

- Health Care and Social Assistance rose by 3.5% to stand at 2,301,100
- Construction rose by 5.8% to stand at 1,389,100
- Retail Trade fell by 0.7% to stand at 1,332,000.

In Health Care and Social Assistance, nationally, 56% of workers were employed full-time; 76% were Female; and the median age of the workforce was 42.

Employment by industry, February 2025 and February 2024

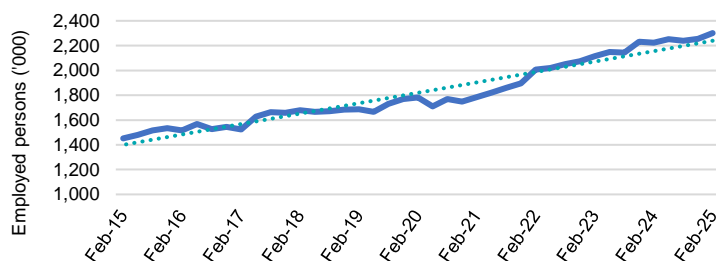


Source: ABS Labour Force Survey, Detailed, four quarter averages for full-time/part-time and gender data; ABS Labour Force Survey, Detailed, seasonally adjusted data, February 2025.

Note: For any enquiries related to the data in this report, contact RegionalWorkforceAssessment@jobsandskills.gov.au

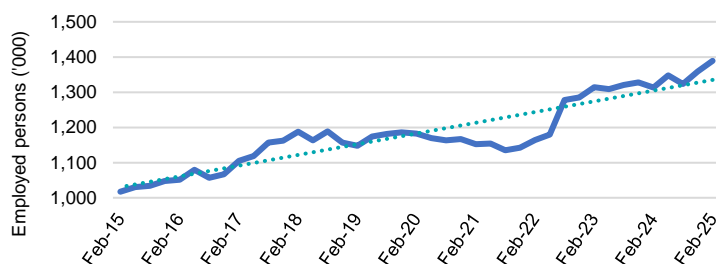
Five largest employing industries: key statistics

Health Care and Social Assistance



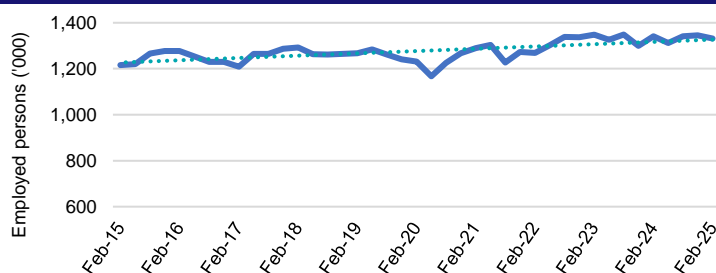
Number employed (Feb-25):	2,301,100
1 year employment change:	3.5%
5 year employment change:	29.1%
10 year employment change:	58.5%
Youth share of employment:	10.2%
Mature age share of employment:	17.2%

Construction



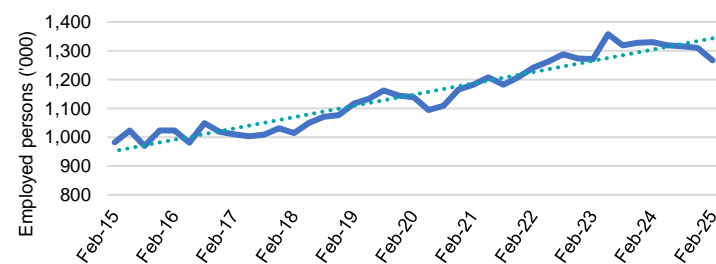
Number employed (Feb-25):	1,389,100
1 year employment change:	5.8%
5 year employment change:	17.5%
10 year employment change:	36.5%
Youth share of employment:	9.5%
Mature age share of employment:	8.0%

Retail Trade



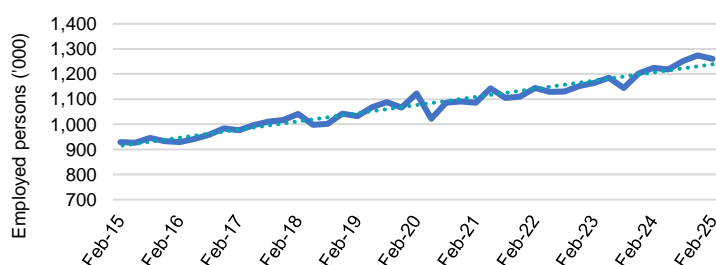
Number employed (Feb-25):	1,332,000
1 year employment change:	-0.7%
5 year employment change:	8.2%
10 year employment change:	9.5%
Youth share of employment:	20.2%
Mature age share of employment:	7.6%

Professional, Scientific and Technical Services



Number employed (Feb-25):	1,267,100
1 year employment change:	-4.7%
5 year employment change:	11.2%
10 year employment change:	29.0%
Youth share of employment:	4.7%
Mature age share of employment:	7.2%

Education and Training



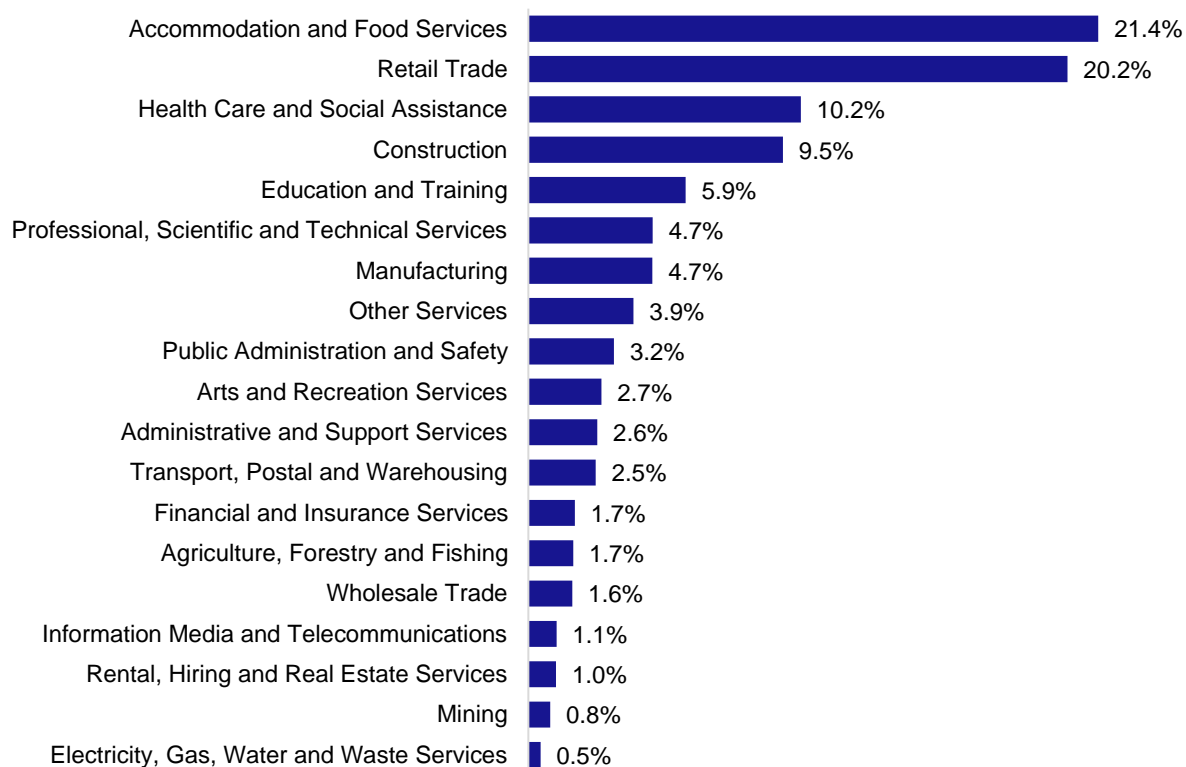
Number employed (Feb-25):	1,260,600
1 year employment change:	2.9%
5 year employment change:	12.3%
10 year employment change:	35.6%
Youth share of employment:	5.9%
Mature age share of employment:	10.5%

Source: ABS Labour Force Survey, Detailed, seasonally adjusted data, February 2025, except youth and mature age data which are from the ABS Census of Population and Housing, 2021.

Note: In each chart, the solid line is the level of employment and the dotted line is a simple linear trend line for the 10 year period.

Employment characteristics by Industry

Which industries are youth (aged 15-24) employed in?



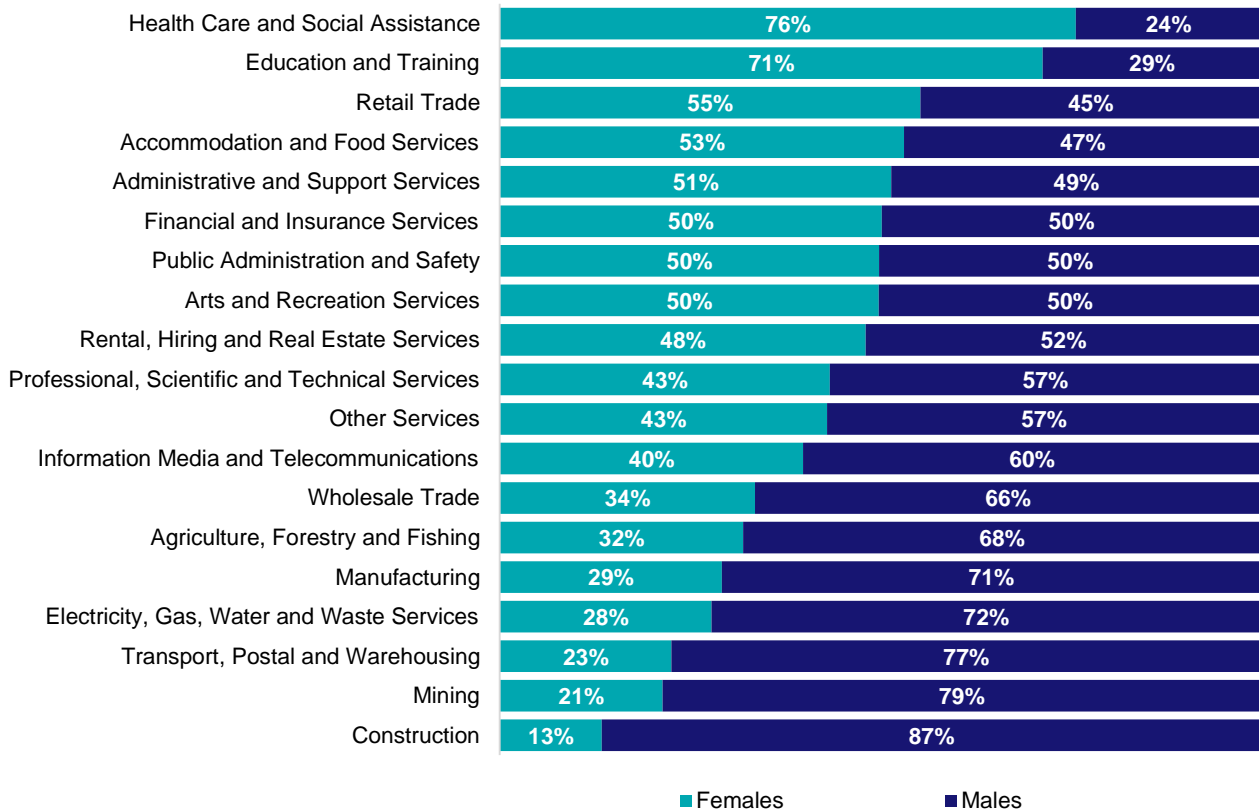
Source: ABS Census of Population and Housing, 2021.

Which industries are mature age persons (aged 55+) employed in?



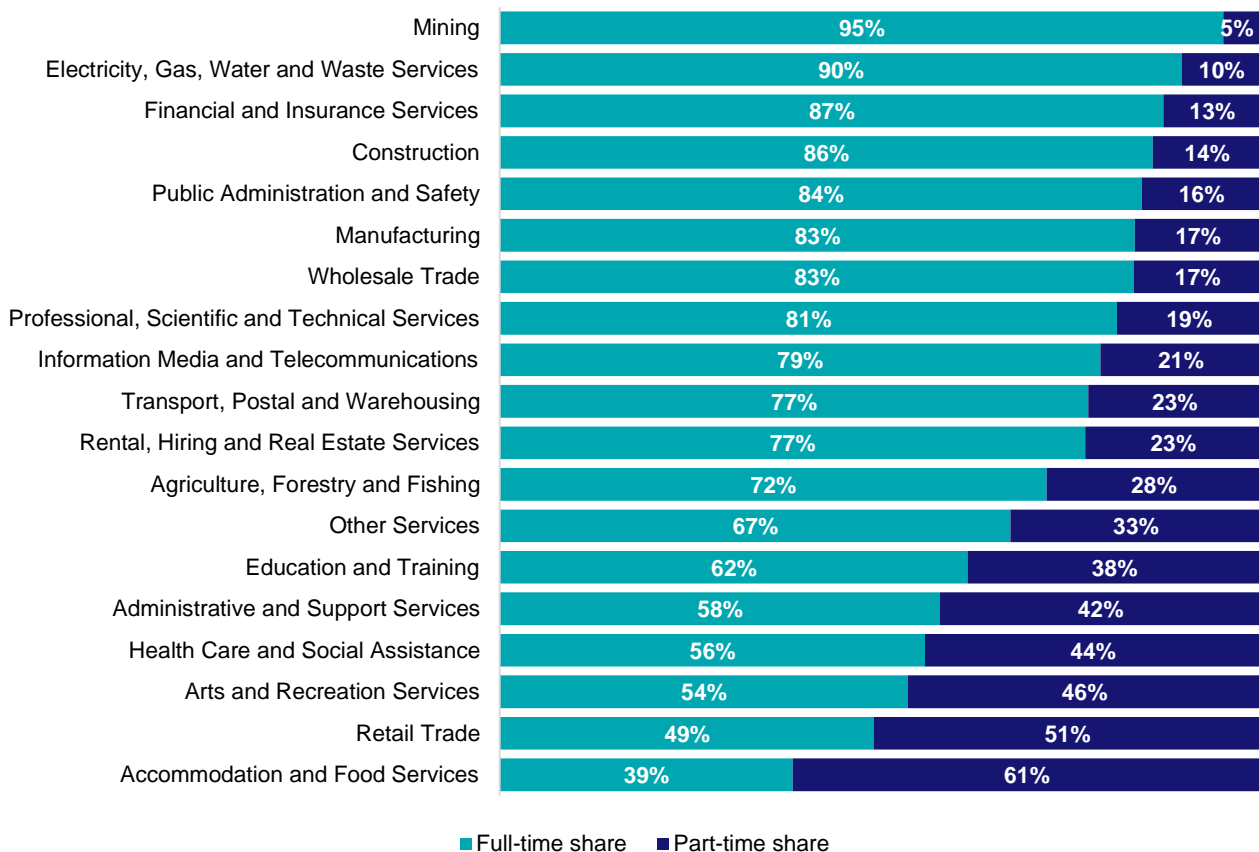
Source: ABS Census of Population and Housing, 2021.

Gender share by industry



Source: ABS Labour Force Survey, Detailed, four quarter averages, February 2025.

Full-time and part-time employment status by industry



Source: ABS Labour Force Survey, Detailed, four quarter averages, February 2025.

Appendix

Employment by industry, Australia, February 2025

Industry (in order of size)	Share of employment Feb-25 (%)	Share of emp't in Capital cities (%)	Share of emp't in regional areas (%)	Employed ('000)			1 year change		5 year change		Median age *
				Feb-25	Feb-24	Feb-20	('000)	%	('000)	%	
Health Care and Social Assistance	15.8	68.8	31.2	2,301.1	2,222.6	1,782.8	78.5	3.5	518.2	29.1	42
Construction	9.6	69.7	30.3	1,389.1	1,313.0	1,182.5	76.1	5.8	206.6	17.5	38
Retail Trade	9.2	69.1	30.9	1,332.0	1,340.7	1,230.7	-8.7	-0.7	101.3	8.2	34
Professional, Scientific and Technical Services	8.7	82.9	17.1	1,267.1	1,329.6	1,139.0	-62.5	-4.7	128.1	11.2	40
Education and Training	8.7	69.6	30.4	1,260.6	1,225.2	1,122.8	35.4	2.9	137.8	12.3	43
Public Administration and Safety	6.8	72.3	27.7	988.1	932.4	833.1	55.8	6.0	155.1	18.6	43
Accommodation and Food Services	6.7	69.5	30.5	967.1	910.0	916.9	57.1	6.3	50.1	5.5	27
Manufacturing	6.1	71.0	29.0	887.4	913.1	912.9	-25.7	-2.8	-25.5	-2.8	43
Transport, Postal and Warehousing	5.0	76.3	23.7	729.0	730.9	652.3	-1.9	-0.3	76.7	11.8	44
Financial and Insurance Services	3.9	85.8	14.2	564.4	540.8	465.8	23.6	4.4	98.7	21.2	40
Other Services	3.7	69.1	30.9	539.7	520.9	485.8	18.9	3.6	54.0	11.1	39
Administrative and Support Services	3.0	72.9	27.1	434.1	422.3	438.6	11.8	2.8	-4.5	-1.0	41
Wholesale Trade	2.4	77.7	22.3	349.8	407.2	390.0	-57.4	-14.1	-40.2	-10.3	44
Mining	2.3	57.2	42.8	331.7	306.0	262.0	25.8	8.4	69.7	26.6	41
Agriculture, Forestry and Fishing	2.0	17.6	82.4	290.7	318.9	324.9	-28.2	-8.8	-34.1	-10.5	49
Arts and Recreation Services	1.9	73.6	26.4	277.7	273.7	245.3	4.1	1.5	32.5	13.2	36
Rental, Hiring and Real Estate Services	1.7	76.7	23.3	247.0	228.5	213.8	18.5	8.1	33.1	15.5	42
Information Media and Telecommunications	1.3	82.2	17.8	193.7	191.6	208.2	2.1	1.1	-14.6	-7.0	39
Electricity, Gas, Water and Waste Services	1.3	67.0	33.0	182.2	165.7	131.4	16.5	10.0	50.8	38.7	43
All Industries	100.0	71.1	28.9	14,527.5	14,293.3	12,949.5	234.2	1.6	1577.9	12.2	40

Source: ABS Labour Force Survey, Detailed, February 2025. Data for Australia are seasonally adjusted. Greater Capital City and Rest of State data are four quarter averages. *Median age is from the ABS Census of Population and Housing, 2021.