

# Employment Region Industry profile

## Perth - South Employment Region

Release date: 24 April 2024

### Overview

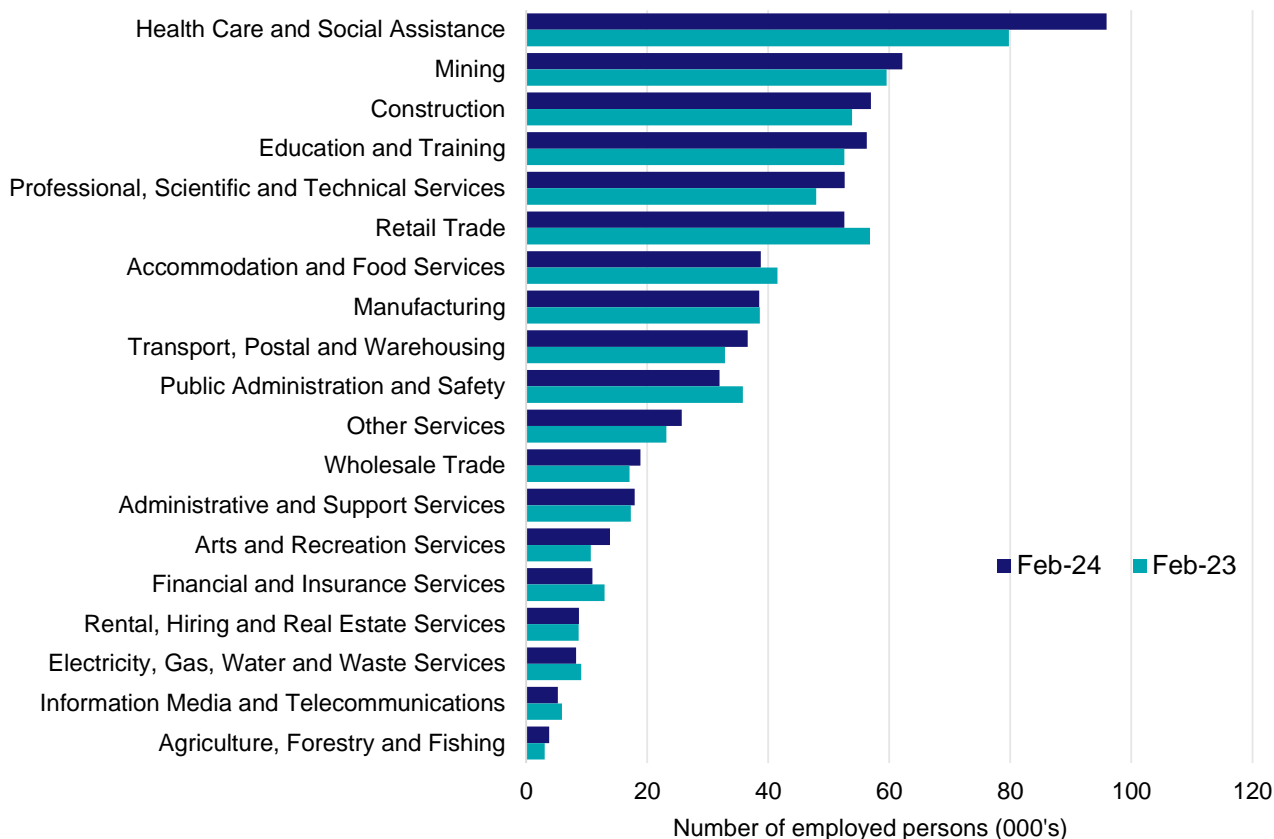
In February 2024, there were around 636,100 people employed in the Perth - South Employment Region. The 5 largest employing industries in the region were Health Care and Social Assistance, Mining, Construction, Education and Training, and Professional, Scientific and Technical Services. Together these 5 industries accounted for 51% of employment in the region.

Over the year to February 2024, employment in:

- Health Care and Social Assistance rose by 20.2% to stand at 95,900
- Mining rose by 4.4% to stand at 62,200
- Construction rose by 5.9% to stand at 57,000.

In Health Care and Social Assistance in the Perth - South Employment Region, 56% of workers were employed full-time; 80% were female; and the median age of the workforce was 41.

### Employment by industry, February 2024 and February 2023



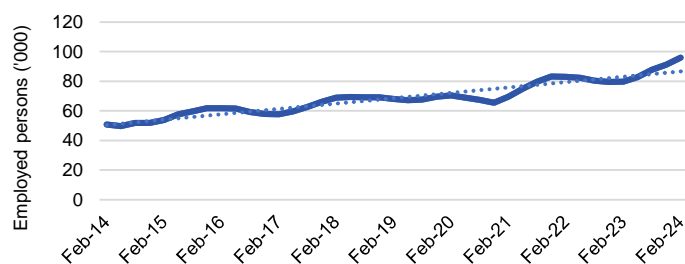
Source: ABS Labour Force Survey\*, Detailed, four quarter averages, February 2024. Note that total employment for the region (four quarter averaged data) may not match data published in the Employment Region Labour Market dashboards (6 month averaged data).

\*ABS Labour Force Survey data are based on the combined SA4s of Mandurah; Perth - South East; and Perth - South West.

**Notes:** Data are the latest available. A high degree of caution should be exercised when interpreting data at the regional level, particularly in regards to percentage changes, given the volatility of the underlying data. For any enquiries related to the data in this report, please contact [RegionalWorkforceAssessment@jobsandskills.gov.au](mailto:RegionalWorkforceAssessment@jobsandskills.gov.au)

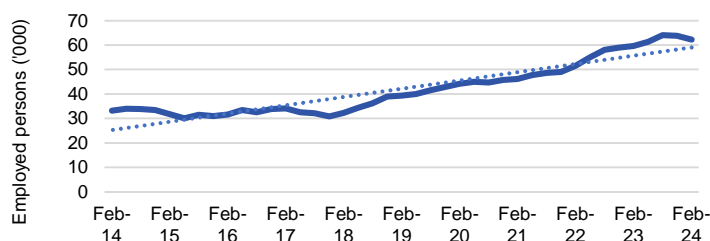
# Five largest employing industries: key statistics

## Health Care and Social Assistance



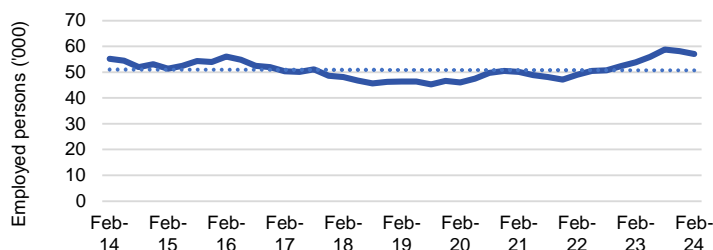
Number employed (Feb-24):	95,900
1 year employment change:	20.2%
5 year employment change:	40.9%
10 year employment change:	88.8%
Youth share of employment:	9.8%
Mature age share of employment:	16.1%

## Mining



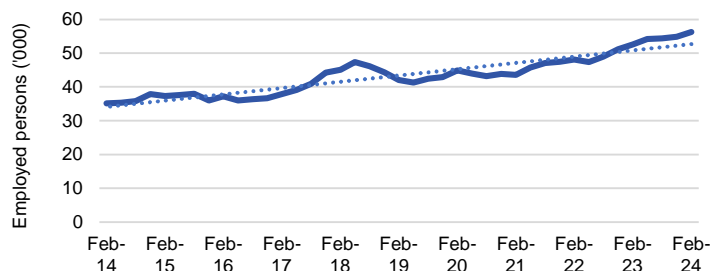
Number employed (Feb-24):	62,200
1 year employment change:	4.4%
5 year employment change:	58.2%
10 year employment change:	87.3%
Youth share of employment:	3.0%
Mature age share of employment:	6.1%

## Construction



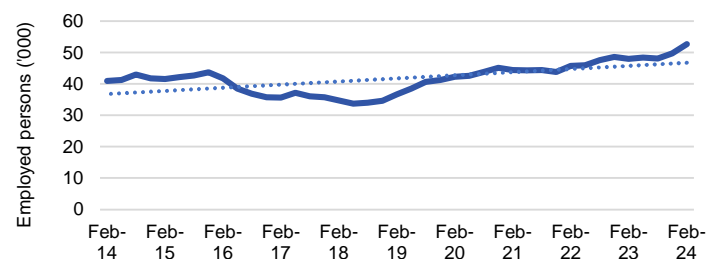
Number employed (Feb-24):	57,000
1 year employment change:	5.9%
5 year employment change:	22.9%
10 year employment change:	3.2%
Youth share of employment:	7.3%
Mature age share of employment:	8.5%

## Education and Training



Number employed (Feb-24):	56,300
1 year employment change:	7.1%
5 year employment change:	34.1%
10 year employment change:	60.3%
Youth share of employment:	5.4%
Mature age share of employment:	11.6%

## Professional, Scientific and Technical Services



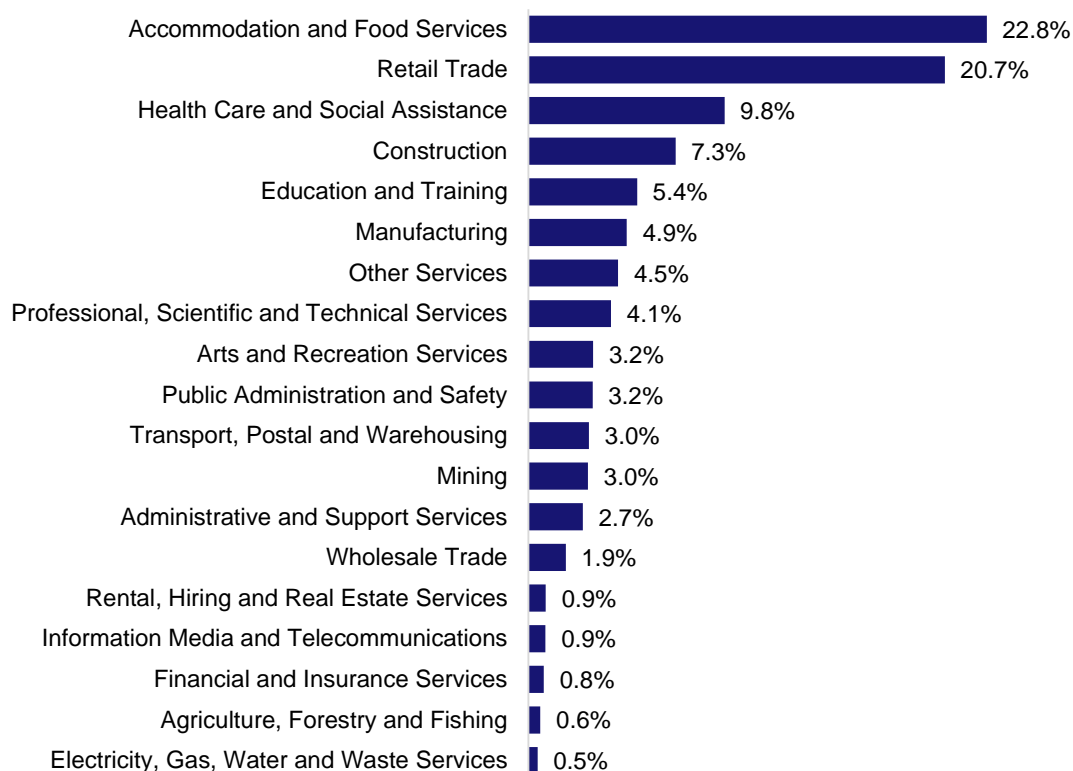
Number employed (Feb-24):	52,700
1 year employment change:	9.9%
5 year employment change:	43.7%
10 year employment change:	28.6%
Youth share of employment:	4.1%
Mature age share of employment:	6.7%

Source: ABS Labour Force Survey, Detailed, four quarter averages, February 2024, except youth and mature age data which are from the ABS Census of Population and Housing, 2021.

**Notes:** In each chart, the solid line is the level of employment and the dotted line is a simple linear trend line for the 10 year period. Given the volatility of the underlying data, employment estimates should be treated with a high degree of caution. Particular focus should be placed on the employment series over time to ascertain more reliable long-term growth trends.

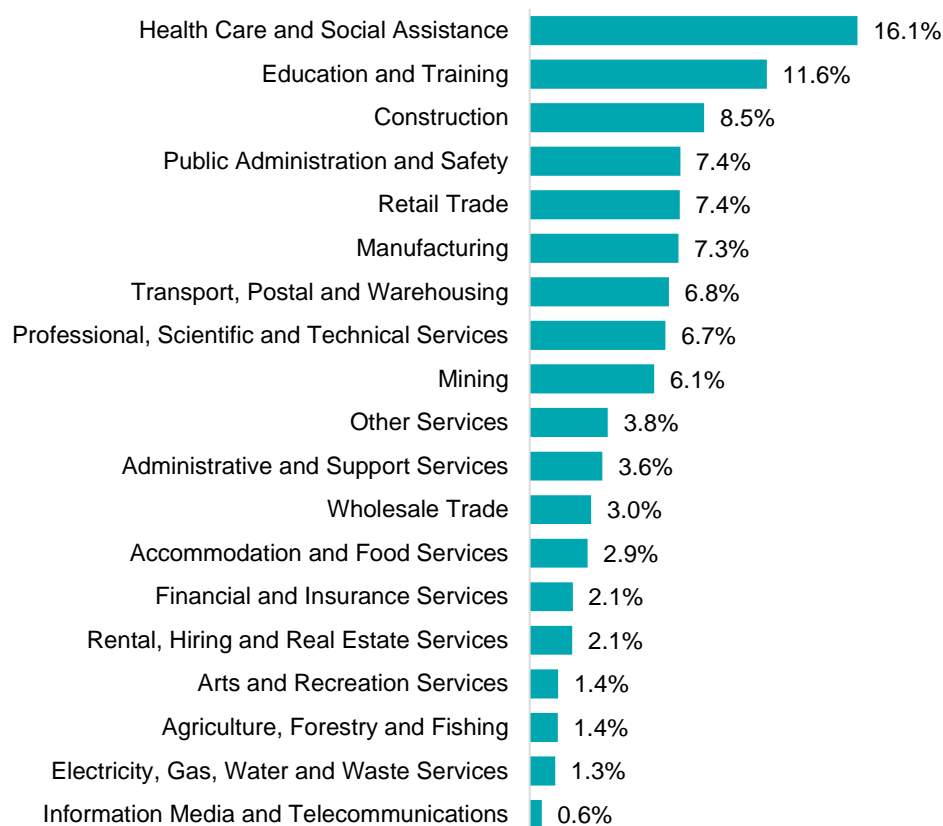
## Employment characteristics by Industry

### Which industries are youth (aged 15-24) employed in?



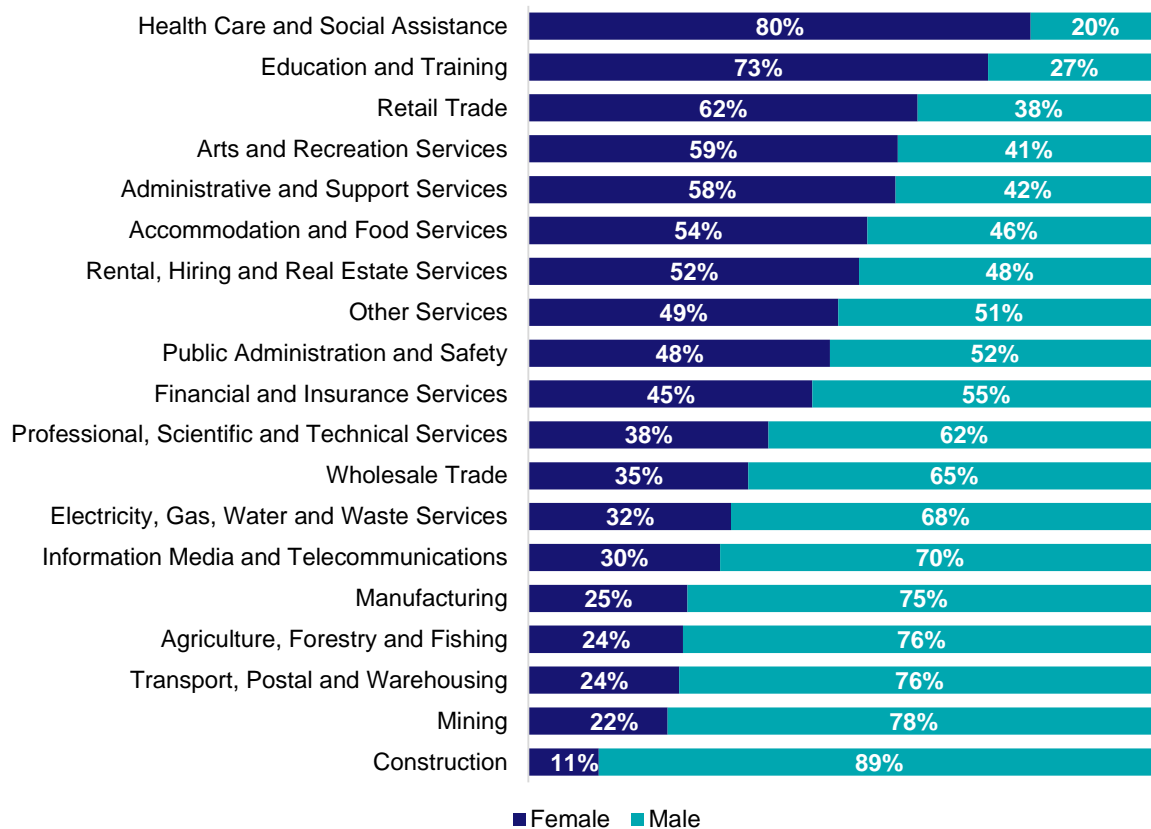
Source: ABS Census of Population and Housing, 2021.

### Which industries are mature age persons (aged 55+) employed in?



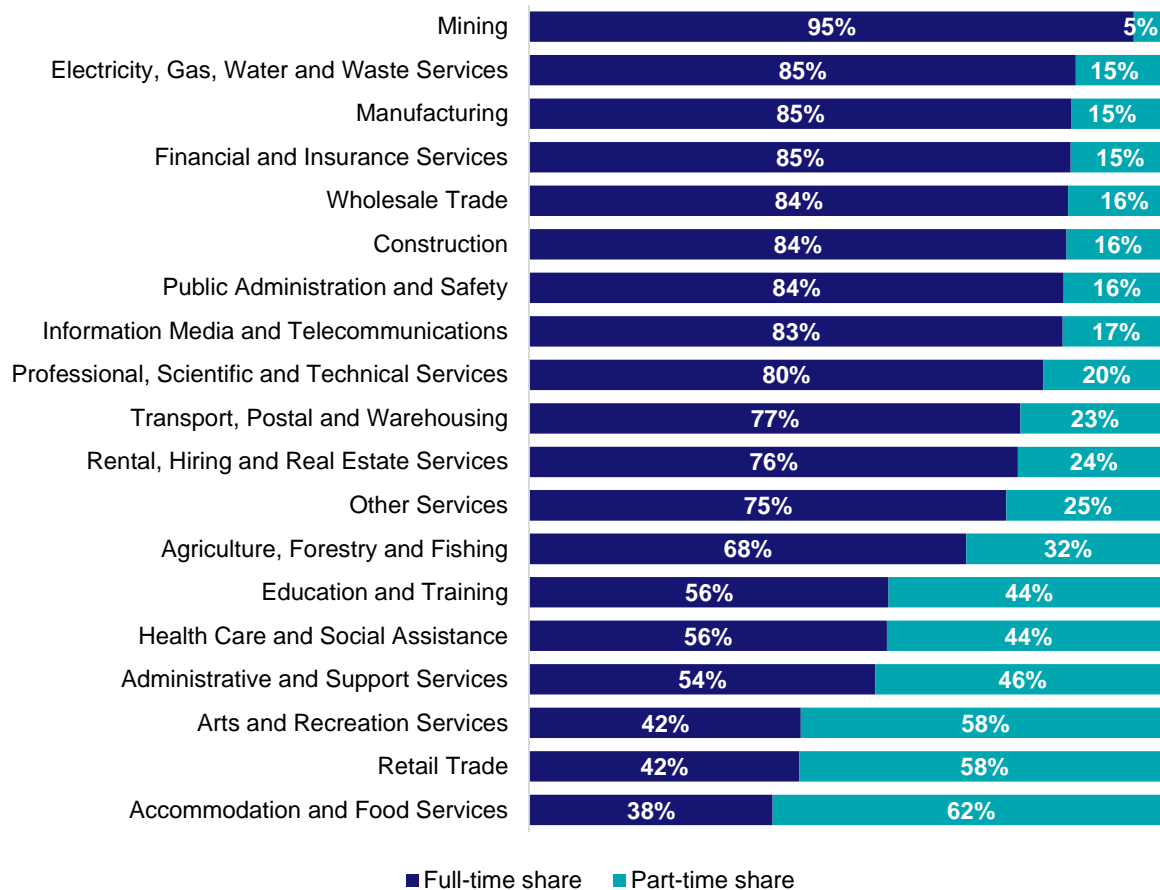
Source: ABS Census of Population and Housing, 2021. Note: SA2 level Census data have been aggregated to the Employment Region level.

## Gender share by industry



Source: ABS Labour Force Survey, Detailed, four quarter averages, February 2024.

## Full-time and part-time employment status by industry



Source: ABS Labour Force Survey, Detailed, four quarter averages, February 2024.

## Appendix

### Employment by industry, Perth - South, February 2024

Industry (in order of size)	Share of employment in the region Feb-24 (%)	Employed ('000)			Full-time share %	Part-time share %	Median age *
		Feb-24	Feb-23	Feb-19			
Health Care and Social Assistance	15.1	95.9	79.8	68.1	55.9	44.1	41
Mining	9.8	62.2	59.6	39.3	94.5	5.5	41
Construction	9.0	57.0	53.8	46.4	84.0	16.0	40
Education and Training	8.9	56.3	52.6	42.0	56.2	43.8	44
Professional, Scientific and Technical Services	8.3	52.7	47.9	36.7	80.4	19.6	40
Retail Trade	8.3	52.6	56.8	52.2	42.2	57.8	32
Accommodation and Food Services	6.1	38.8	41.5	38.8	38.1	61.9	24
Manufacturing	6.1	38.5	38.7	41.3	84.7	15.3	42
Transport, Postal and Warehousing	5.8	36.6	32.8	28.0	76.8	23.2	43
Public Administration and Safety	5.0	32.0	35.8	33.9	83.5	16.5	43
Other Services	4.0	25.7	23.2	23.2	74.6	25.4	38
Wholesale Trade	3.0	18.9	17.1	15.8	84.3	15.7	42
Administrative and Support Services	2.8	17.9	17.3	15.1	54.1	45.9	40
Arts and Recreation Services	2.2	13.9	10.7	9.5	42.5	57.5	33
Financial and Insurance Services	1.7	10.9	13.0	9.3	84.6	15.4	41
Rental, Hiring and Real Estate Services	1.4	8.8	8.7	8.1	76.4	23.6	44
Electricity, Gas, Water and Waste Services	1.3	8.3	9.1	10.4	85.4	14.6	42
Information Media and Telecommunications	0.8	5.2	5.9	4.1	83.4	16.6	36
Agriculture, Forestry and Fishing	0.6	3.8	3.1	4.6	68.3	31.7	47
<b>All industries</b>	<b>100.0</b>	<b>636.1</b>	<b>607.5</b>	<b>526.7</b>	<b>69.1</b>	<b>30.9</b>	<b>40</b>

Source: ABS Labour Force Survey, Detailed, four quarter averages, February 2024. \*Median age is from the ABS Census of Population and Housing, 2021. Median age has been derived using aggregated SA2s for the Employment Region.

**Note: Small cells should be viewed with caution due to small sample sizes and regional volatility.**