



Australian Government



Jobs and Skills Australia

Industry profile

Northern Territory

Release date: 27 October 2023

Overview

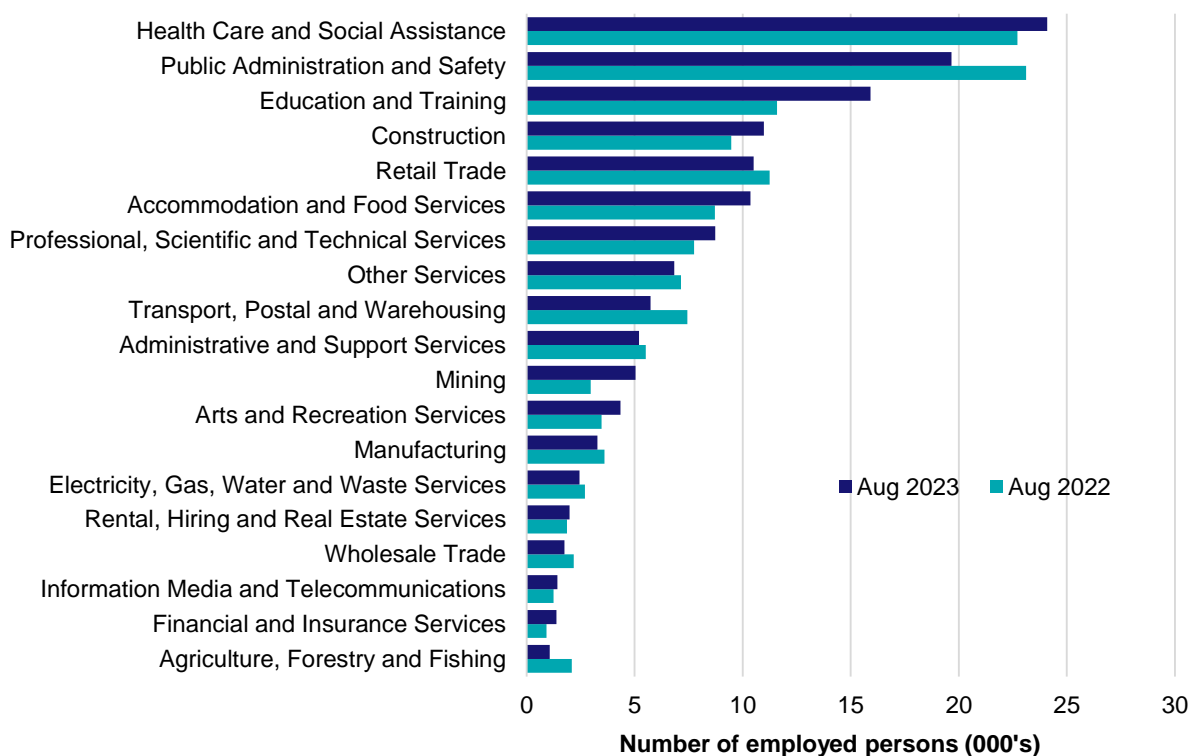
In August 2023, there were around 140,800 people employed in Northern Territory. The 5 largest employing industries in Northern Territory were Health Care and Social Assistance, Public Administration and Safety, Education and Training, Construction and Retail Trade. Together these 5 industries accounted for 58% of all employment.

Over the year to August 2023, employment in:

- Health Care and Social Assistance rose by 6.1% to stand at 24,100
- Public Administration and Safety fell by 15.0% to stand at 19,700
- Education and Training rose by 37.3% to stand at 15,900.

In Health Care and Social Assistance in Northern Territory, 77% of workers were employed full-time; 70% were Female; and the median age of the workforce was 38. Around 53% of employed persons in this industry were located in Greater Darwin.

Employment by industry, August 2023 and August 2022

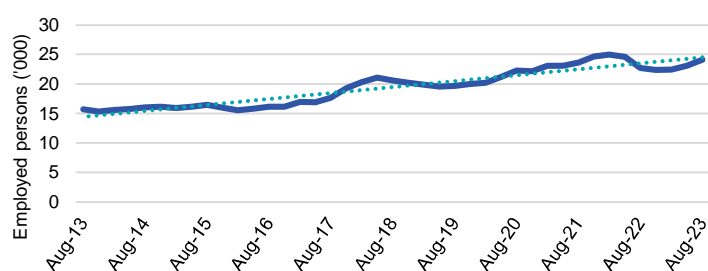


Source: ABS Labour Force Survey, Detailed, four quarter averages, August 2023. Note that total employment (four quarter averaged data) may not match data published in the Labour Market dashboards (6 month averaged data).

Note: For any enquiries related to the data in this report, contact RegionalWorkforceAssessment@jobsandskills.gov.au

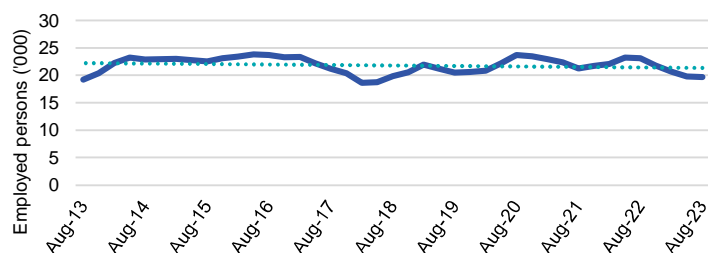
Five largest employing industries: key statistics

Health Care and Social Assistance



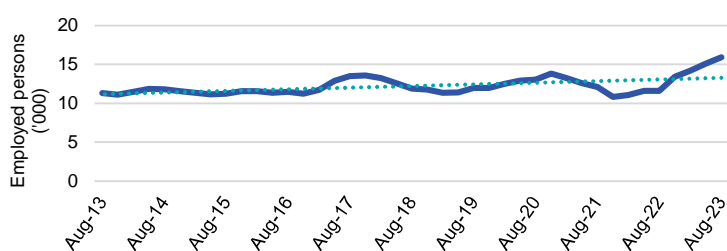
Number employed (Aug-23):	24,100
1 year employment change:	6.1%
5 year employment change:	17.2%
10 year employment change:	53.7%
Youth share of employment:	10.1%
Mature age share of employment:	14.8%

Public Administration and Safety



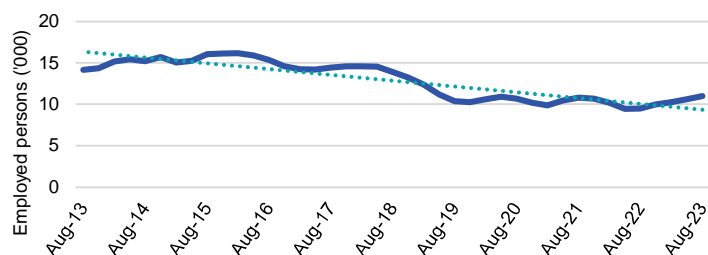
Number employed (Aug-23):	19,700
1 year employment change:	-15.0%
5 year employment change:	-0.8%
10 year employment change:	2.4%
Youth share of employment:	15.1%
Mature age share of employment:	18.0%

Education and Training



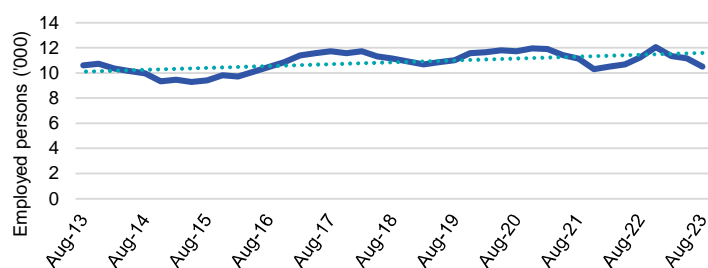
Number employed (Aug-23):	15,900
1 year employment change:	37.3%
5 year employment change:	34.1%
10 year employment change:	40.8%
Youth share of employment:	6.6%
Mature age share of employment:	11.8%

Construction



Number employed (Aug-23):	11,000
1 year employment change:	16.0%
5 year employment change:	-20.9%
10 year employment change:	-22.3%
Youth share of employment:	7.3%
Mature age share of employment:	8.4%

Retail Trade



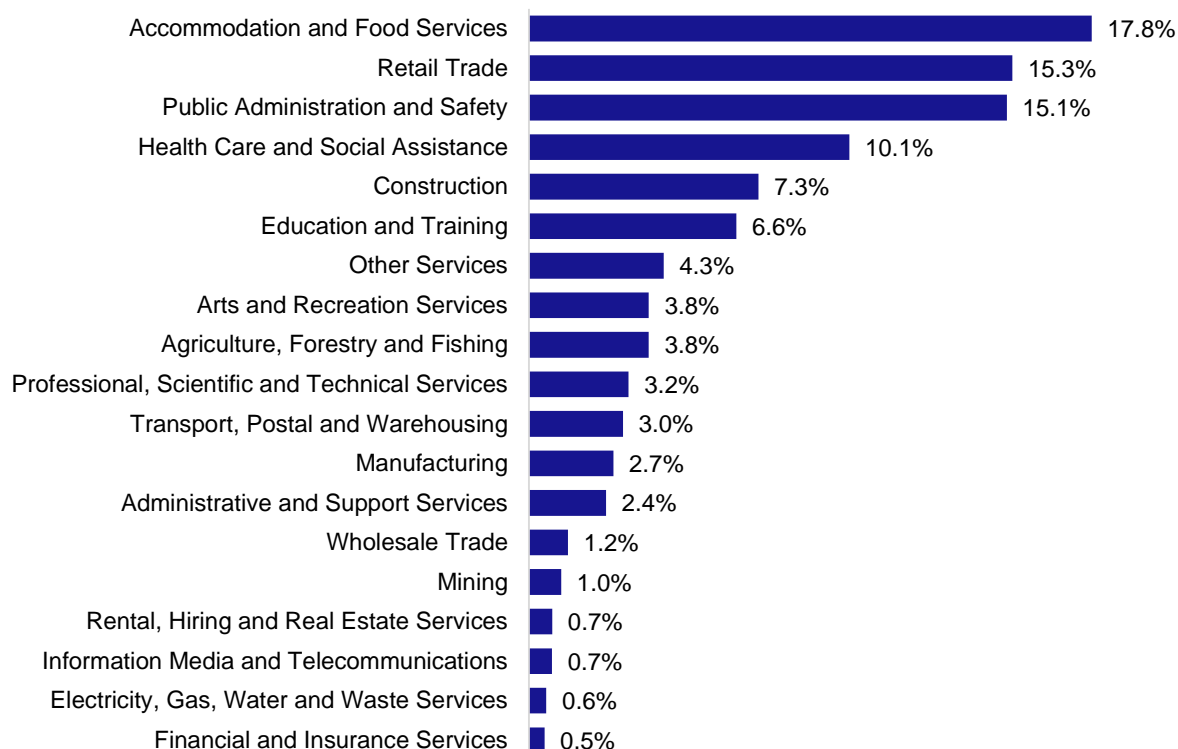
Number employed (Aug-23):	10,500
1 year employment change:	-6.6%
5 year employment change:	-5.7%
10 year employment change:	-0.9%
Youth share of employment:	15.3%
Mature age share of employment:	6.3%

Source: ABS Labour Force Survey, Detailed, four quarter averages, August 2023, except youth and mature age data which are from the ABS Census of Population and Housing, 2021.

Note: In each chart, the solid line is the level of employment and the dotted line is a simple linear trend line for the 10 year period.

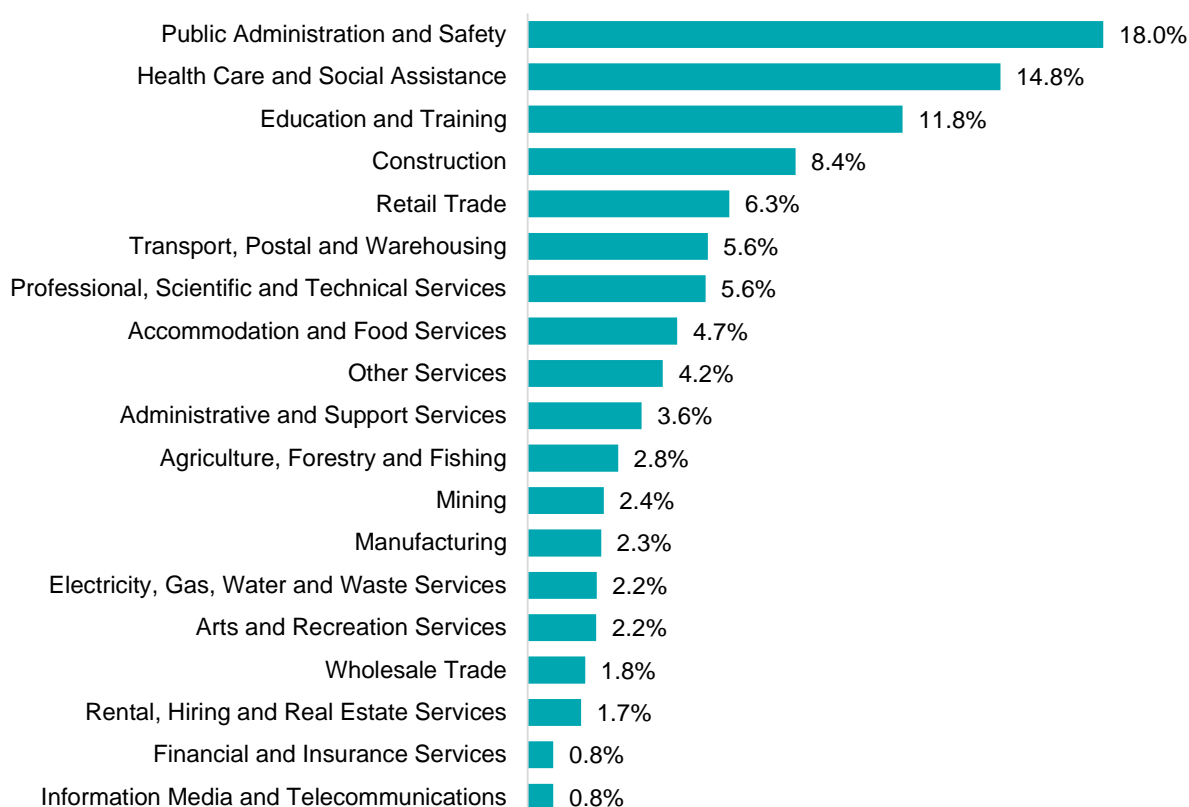
Employment characteristics by Industry

Which industries are youth (aged 15-24) employed in?



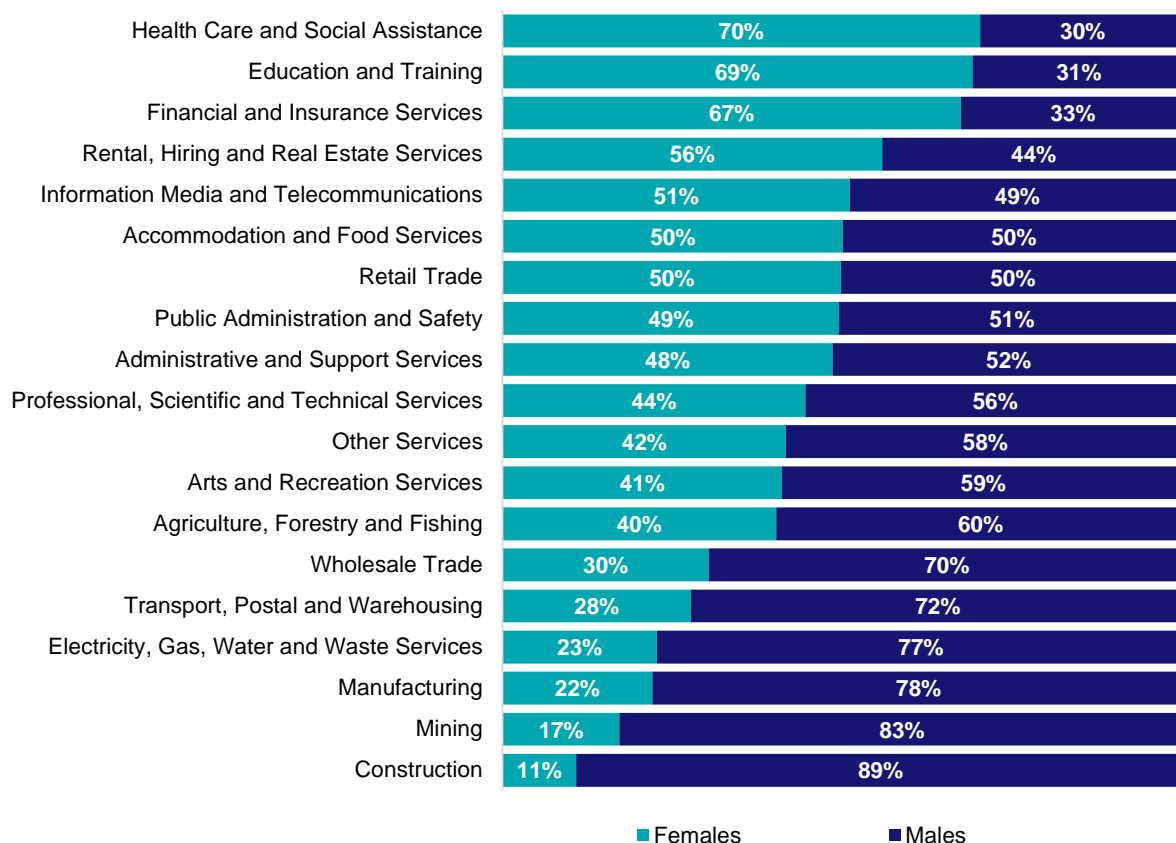
Source: ABS Census of Population and Housing, 2021.

Which industries are mature age persons (aged 55+) employed in?



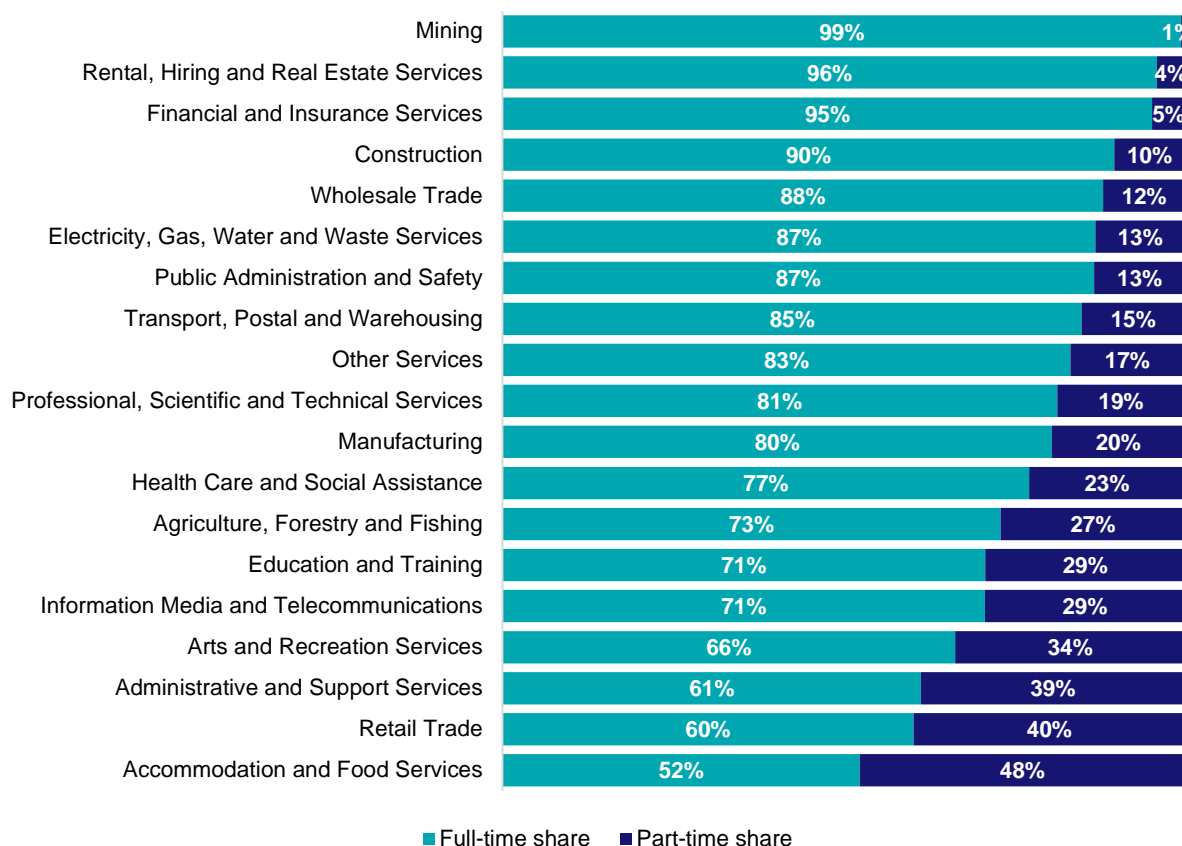
Source: ABS Census of Population and Housing, 2021.

Gender share by industry



Source: ABS Labour Force Survey, Detailed, four quarter averages, August 2023.

Full-time and part-time employment status by industry



Source: ABS Labour Force Survey, Detailed, four quarter averages, August 2023.

Appendix

Employment by industry, Northern Territory, August 2023

Industry (in order of size)	Share of emp't Aug-23 (%)	Share of emp't in Greater Darwin (%)	Share of emp't in Rest of NT (%)	Employed ('000)			1 year change		5 year change		Median age *
				Aug-23	Aug-22	Aug-18	('000)	%	('000)	%	
Health Care and Social Assistance	17.1	53.4	46.6	24.1	22.7	20.6	1.4	6.1	3.5	17.2	38
Public Administration and Safety	14.0	53.8	46.2	19.7	23.1	19.8	-3.5	-15.0	-0.2	-0.8	40
Education and Training	11.3	55.4	44.6	15.9	11.6	11.9	4.3	37.3	4.1	34.1	42
Construction	7.8	69.7	30.3	11.0	9.5	13.9	1.5	16.0	-2.9	-20.9	39
Retail Trade	7.5	61.0	39.0	10.5	11.3	11.1	-0.7	-6.6	-0.6	-5.7	33
Accommodation and Food Services	7.4	71.9	28.1	10.4	8.7	9.7	1.6	18.9	0.7	7.4	30
Professional, Scientific and Technical Services	6.2	76.7	23.3	8.7	7.8	6.9	1.0	12.6	1.8	26.0	39
Other Services	4.9	52.2	47.8	6.8	7.1	6.8	-0.3	-4.2	0.0	0.1	38
Transport, Postal and Warehousing	4.1	78.8	21.2	5.7	7.4	6.3	-1.7	-23.0	-0.5	-8.7	42
Administrative and Support Services	3.7	56.9	43.1	5.2	5.5	5.1	-0.3	-5.6	0.1	2.2	41
Mining	3.6	55.9	44.1	5.0	3.0	4.7	2.1	69.9	0.3	7.1	42
Arts and Recreation Services	3.1	54.7	45.3	4.3	3.5	4.6	0.9	25.4	-0.2	-4.5	35
Manufacturing	2.3	71.8	28.2	3.3	3.6	4.0	-0.3	-8.9	-0.7	-16.9	40
Electricity, Gas, Water and Waste Services	1.7	69.2	30.8	2.5	2.7	2.4	-0.3	-9.5	0.0	0.6	44
Rental, Hiring and Real Estate Services	1.4	77.7	22.3	2.0	1.9	2.1	0.1	6.5	-0.1	-4.7	43
Wholesale Trade	1.2	86.0	14.0	1.7	2.2	2.3	-0.4	-19.9	-0.6	-25.0	41
Information Media and Telecommunications	1.0	59.0	41.0	1.4	1.3	1.6	0.2	14.0	-0.2	-10.0	38
Financial and Insurance Services	1.0	89.6	10.4	1.4	0.9	1.7	0.5	51.5	-0.4	-20.3	39
Agriculture, Forestry and Fishing	0.8	84.6	15.4	1.1	2.1	2.1	-1.0	-49.3	-1.1	-50.1	38
All Industries	100.0	61.7	38.3	140.8	135.8	137.6	5.0	3.7	3.2	2.3	39

Source: ABS Labour Force Survey, Detailed, August 2023, four quarter averages. *Median age is from the ABS Census of Population and Housing, 2021.