



Australian Government



Jobs and Skills Australia

# Industry profile

## Australian Capital Territory

Release date: 27 October 2023

### Overview

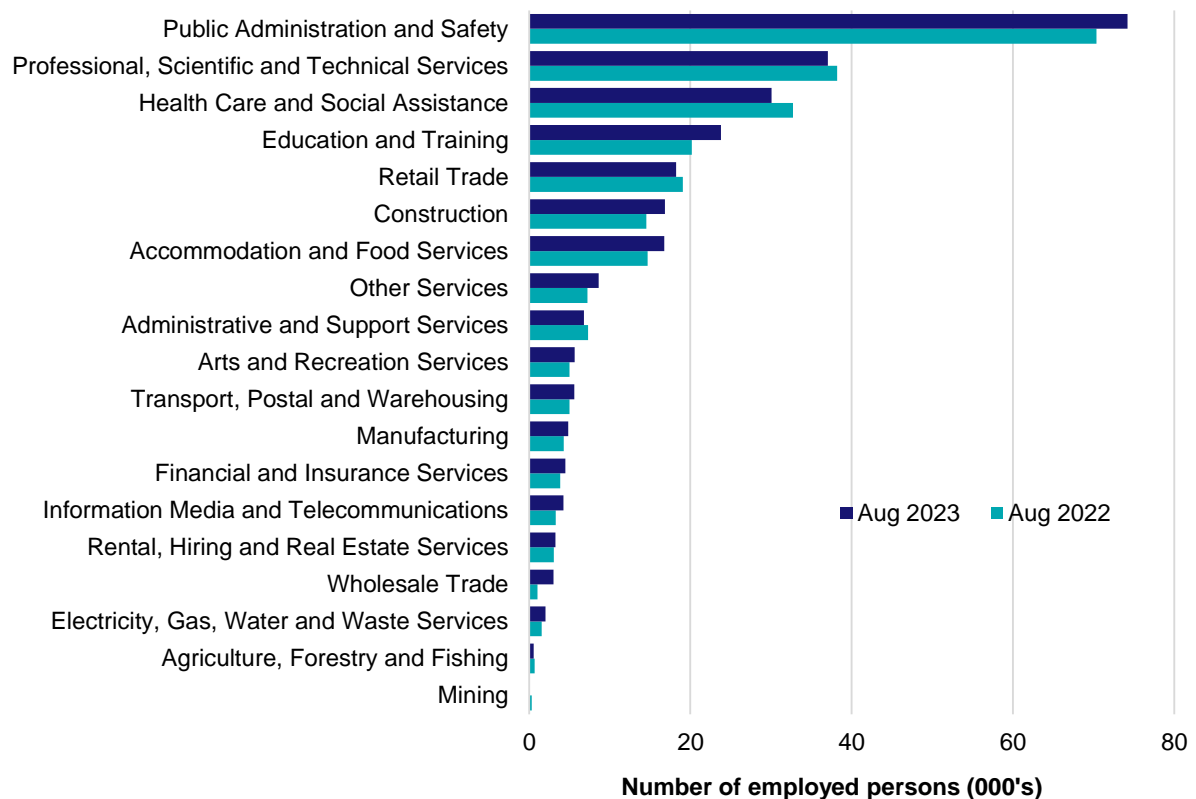
In August 2023, there were around 266,200 people employed in Australian Capital Territory. The 5 largest employing industries in Australian Capital Territory were Public Administration and Safety, Professional, Scientific and Technical Services, Health Care and Social Assistance, Education and Training and Retail Trade. Together these 5 industries accounted for 69% of all employment.

Over the year to August 2023, employment in:

- Public Administration and Safety rose by 5.5% to stand at 74,200
- Professional, Scientific and Technical Services fell by 3.0% to stand at 37,000
- Health Care and Social Assistance fell by 8.1% to stand at 30,100.

In Public Administration and Safety in Australian Capital Territory, 91% of workers were employed full-time; 52% were Female; and the median age of the workforce was 41.

### Employment by industry, August 2023 and August 2022

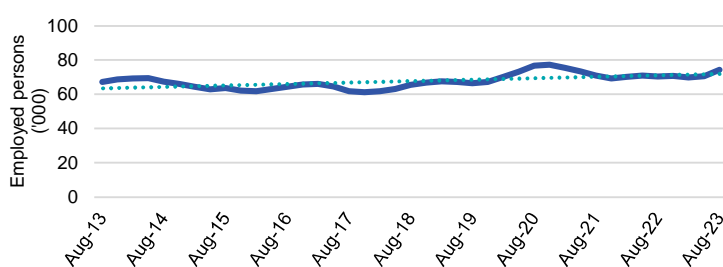


Source: ABS Labour Force Survey, Detailed, four quarter averages, August 2023. Note that total employment (four quarter averaged data) may not match data published in the Labour Market dashboards (6 month averaged data).

Note: For any enquiries related to the data in this report, contact [RegionalWorkforceAssessment@jobsandskills.gov.au](mailto:RegionalWorkforceAssessment@jobsandskills.gov.au)

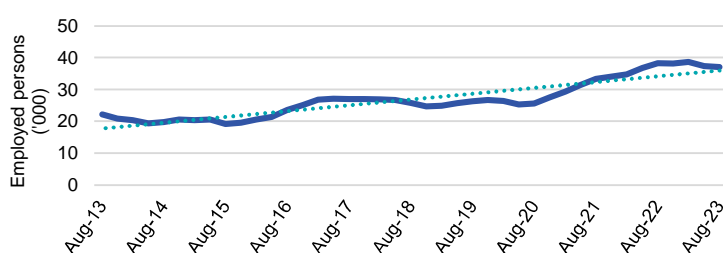
## Five largest employing industries: key statistics

### Public Administration and Safety



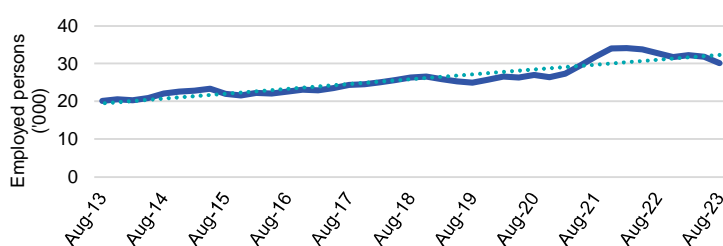
Number employed (Aug-23):	74,200
1 year employment change:	5.5%
5 year employment change:	13.3%
10 year employment change:	10.6%
Youth share of employment:	14.0%
Mature age share of employment:	29.9%

### Professional, Scientific and Technical Services



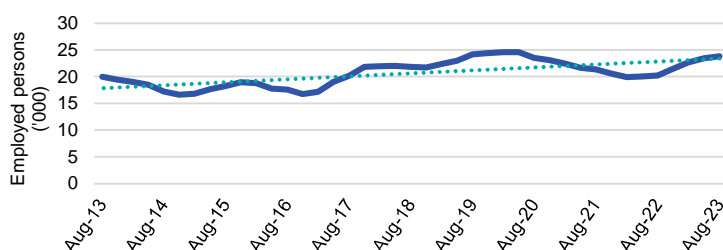
Number employed (Aug-23):	37,000
1 year employment change:	-3.0%
5 year employment change:	43.7%
10 year employment change:	67.2%
Youth share of employment:	7.4%
Mature age share of employment:	11.4%

### Health Care and Social Assistance



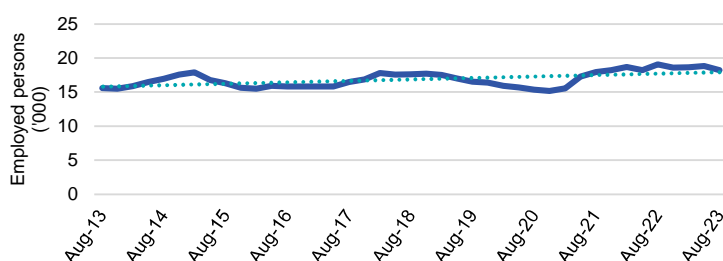
Number employed (Aug-23):	30,100
1 year employment change:	-8.1%
5 year employment change:	14.6%
10 year employment change:	49.5%
Youth share of employment:	9.3%
Mature age share of employment:	13.2%

### Education and Training



Number employed (Aug-23):	23,800
1 year employment change:	17.8%
5 year employment change:	9.0%
10 year employment change:	19.3%
Youth share of employment:	8.6%
Mature age share of employment:	11.4%

### Retail Trade



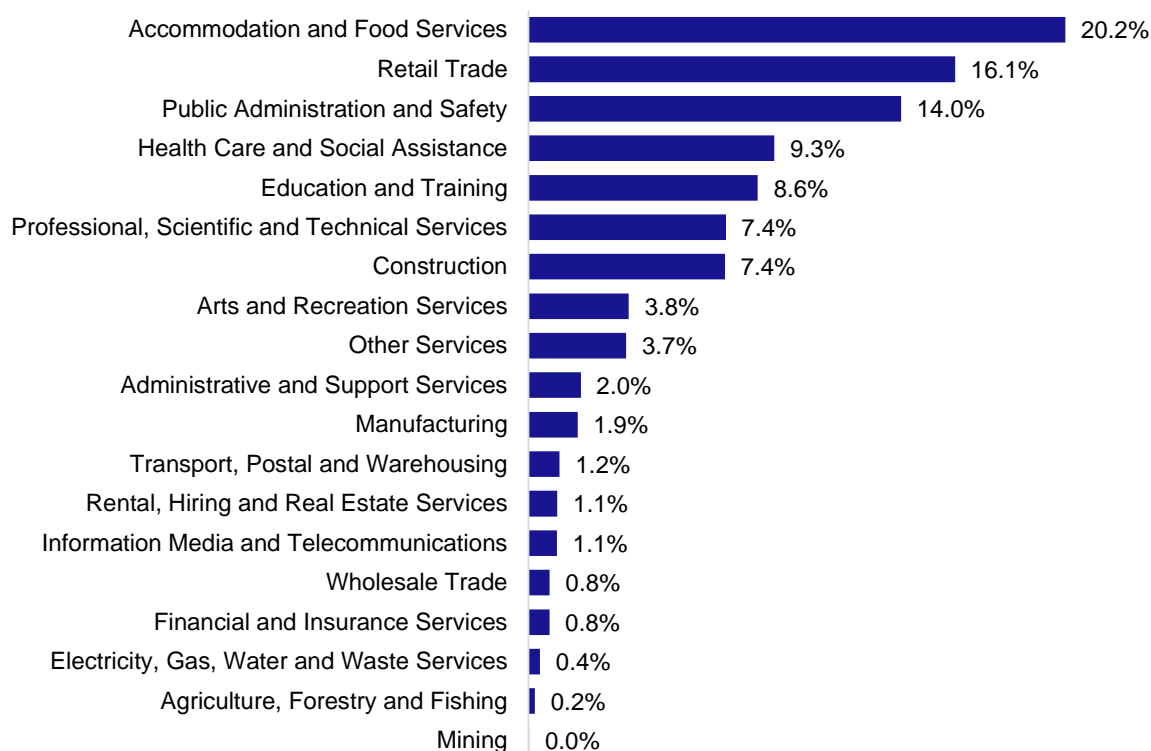
Number employed (Aug-23):	18,200
1 year employment change:	-4.5%
5 year employment change:	3.5%
10 year employment change:	16.8%
Youth share of employment:	16.1%
Mature age share of employment:	5.0%

Source: ABS Labour Force Survey, Detailed, four quarter averages, August 2023, except youth and mature age data which are from the ABS Census of Population and Housing, 2021.

Note: In each chart, the solid line is the level of employment and the dotted line is a simple linear trend line for the 10 year period.

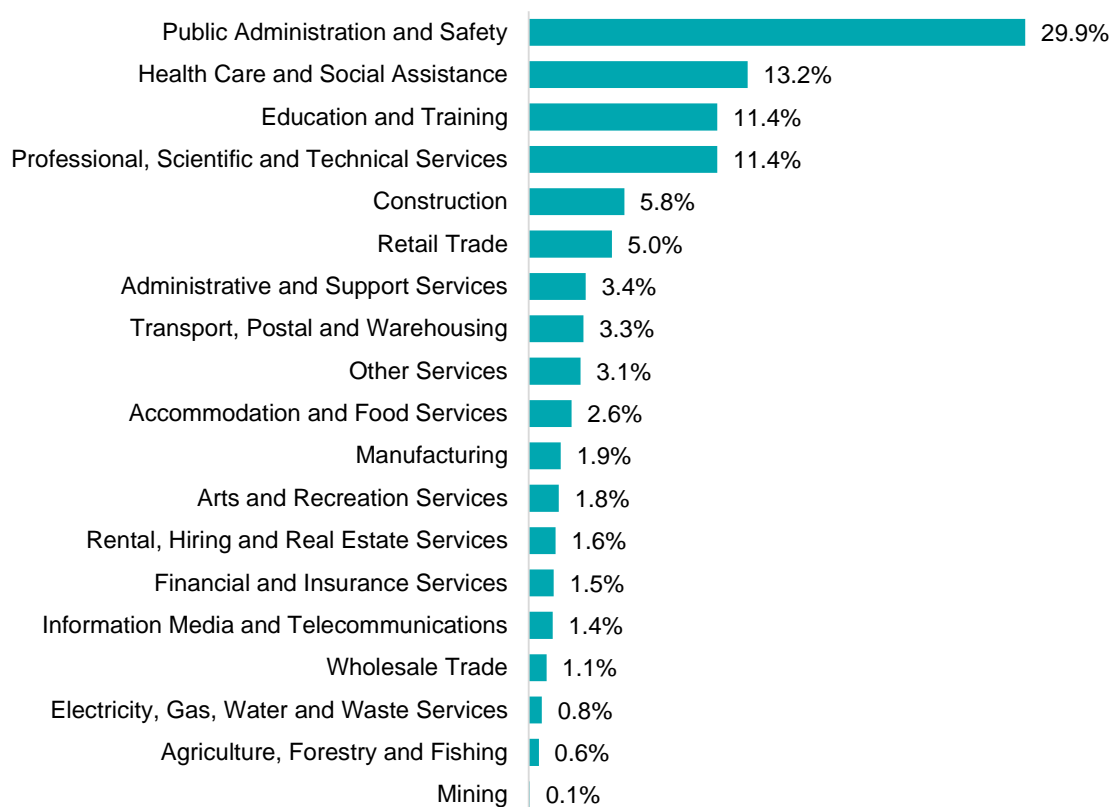
## Employment characteristics by Industry

### Which industries are youth (aged 15-24) employed in?



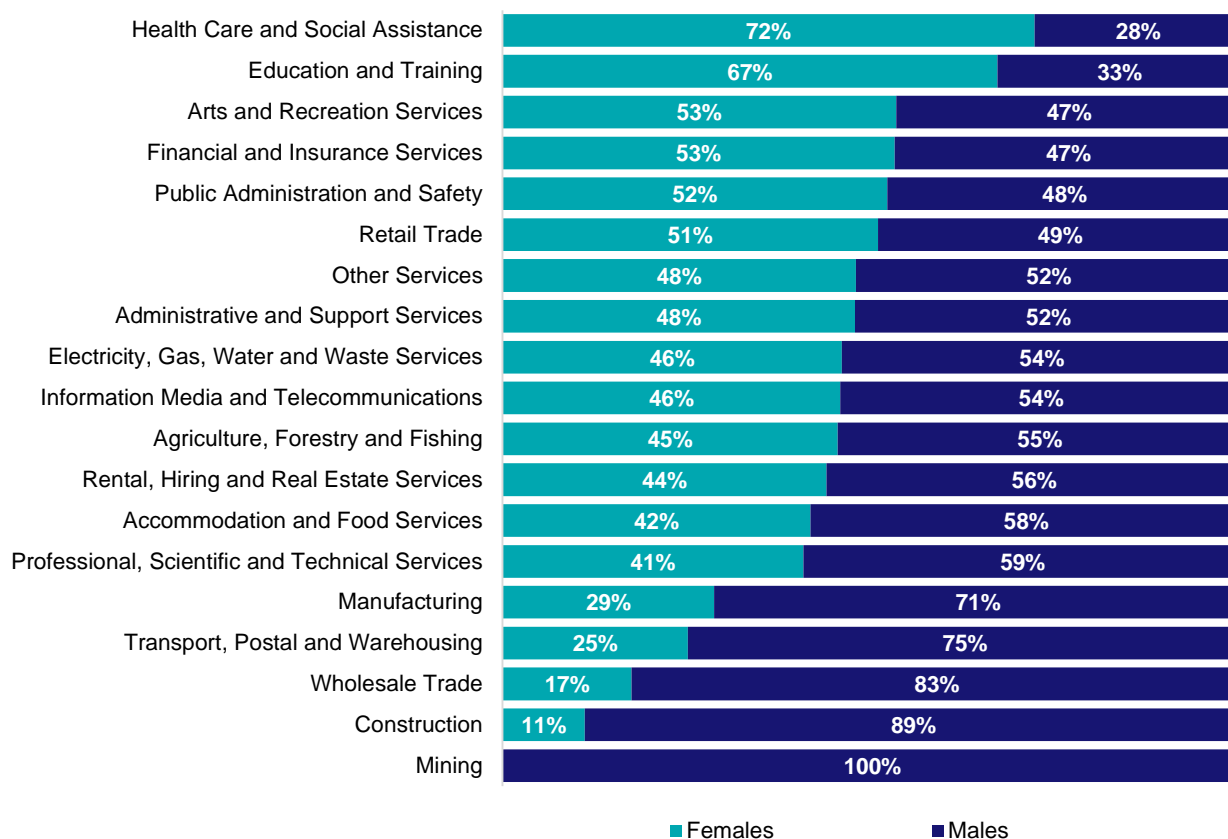
Source: ABS Census of Population and Housing, 2021.

### Which industries are mature age persons (aged 55+) employed in?



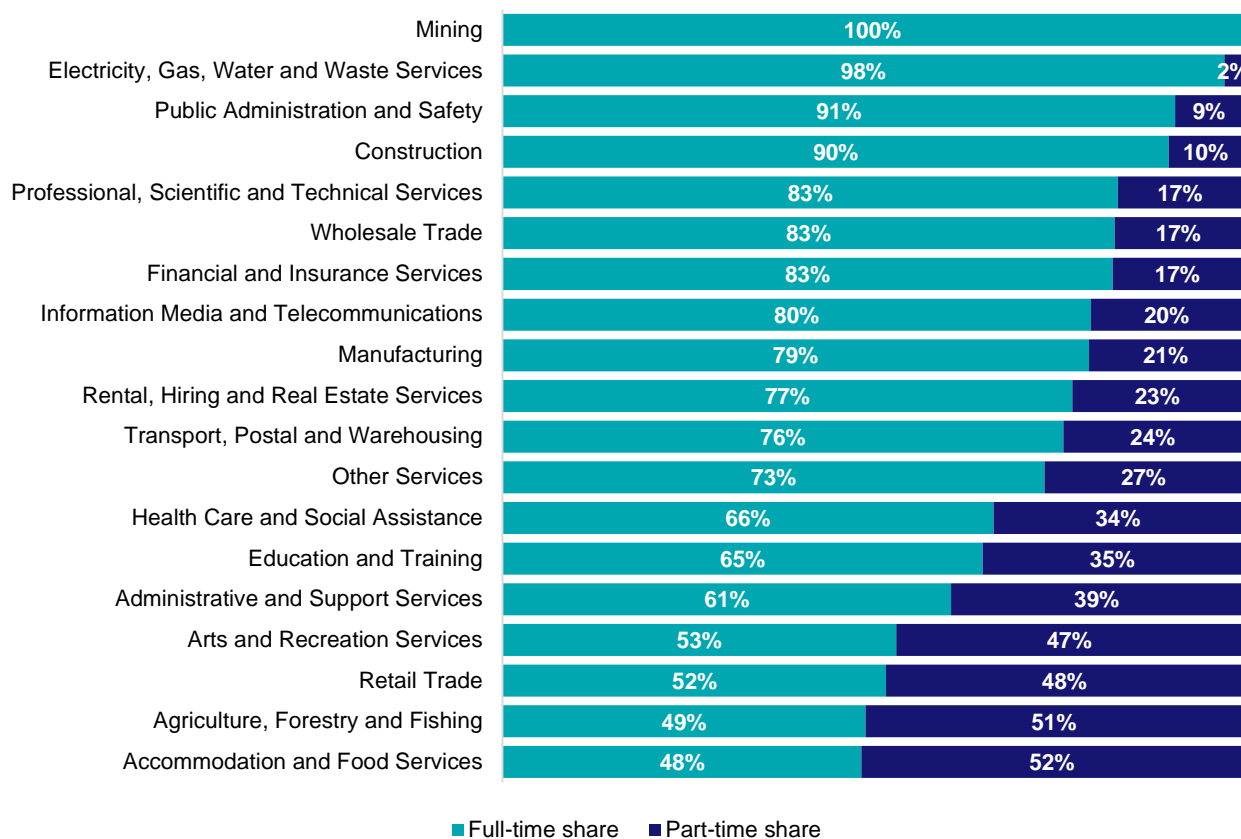
Source: ABS Census of Population and Housing, 2021.

## Gender share by industry



Source: ABS Labour Force Survey, Detailed, four quarter averages, August 2023.

## Full-time and part-time employment status by industry



Source: ABS Labour Force Survey, Detailed, four quarter averages, August 2023.

## Appendix

### Employment by industry, Australian Capital Territory, August 2023

Industry (in order of size)	Share of emp't Aug-23 (%)	Employed ('000)			1 year change		5 year change		Median age *
		Aug-23	Aug-22	Aug-18	('000)	%	('000)	%	
Public Administration and Safety	27.9	74.2	70.4	65.5	3.8	5.5	8.7	13.3	41
Professional, Scientific and Technical Services	13.9	37.0	38.2	25.8	-1.2	-3.0	11.3	43.7	38
Health Care and Social Assistance	11.3	30.1	32.7	26.3	-2.6	-8.1	3.8	14.6	38
Education and Training	8.9	23.8	20.2	21.8	3.6	17.8	2.0	9.0	40
Retail Trade	6.8	18.2	19.1	17.6	-0.9	-4.5	0.6	3.5	28
Construction	6.3	16.8	14.6	14.9	2.3	15.6	1.9	12.7	35
Accommodation and Food Services	6.3	16.8	14.7	18.1	2.1	14.0	-1.4	-7.6	25
Other Services	3.2	8.6	7.2	7.7	1.4	19.2	1.0	12.4	36
Administrative and Support Services	2.6	6.8	7.3	6.4	-0.5	-6.8	0.4	6.2	39
Arts and Recreation Services	2.1	5.7	5.0	4.7	0.6	12.3	1.0	20.9	32
Transport, Postal and Warehousing	2.1	5.6	5.0	6.2	0.6	12.0	-0.5	-8.9	41
Manufacturing	1.8	4.9	4.3	4.2	0.5	12.4	0.6	14.5	38
Financial and Insurance Services	1.7	4.5	3.8	3.7	0.6	16.6	0.8	22.1	39
Information Media and Telecommunications	1.6	4.3	3.3	4.1	1.0	28.8	0.2	5.3	39
Rental, Hiring and Real Estate Services	1.2	3.3	3.1	2.4	0.2	5.9	0.8	34.8	38
Wholesale Trade	1.1	3.0	1.1	1.6	2.0	186.2	1.4	87.6	40
Electricity, Gas, Water and Waste Services	0.8	2.0	1.6	2.3	0.5	30.4	-0.3	-13.4	39
Agriculture, Forestry and Fishing	0.2	0.6	0.7	0.4	-0.1	-19.7	0.2	48.1	41
Mining	0.0	0.0	0.3	0.0	-0.3	-87.4	0.0	NA	43
<b>All Industries</b>	<b>100.0</b>	<b>266.2</b>	<b>252.6</b>	<b>233.7</b>	<b>13.5</b>	<b>5.4</b>	<b>32.5</b>	<b>13.9</b>	<b>38</b>

Source: ABS Labour Force Survey, Detailed, four quarter averages, August 2023. \*Median age is from the ABS Census of Population and Housing, 2021.