



ABS Labour Force Results – July 2023

The data in this document are sourced from ABS, *Labour Force, Australia, July 2023* and are in seasonally adjusted terms (unless stated otherwise). Note that changes are calculated from more detailed data and may not match changes calculated manually from the figures presented in the text and tables.

OVERVIEW

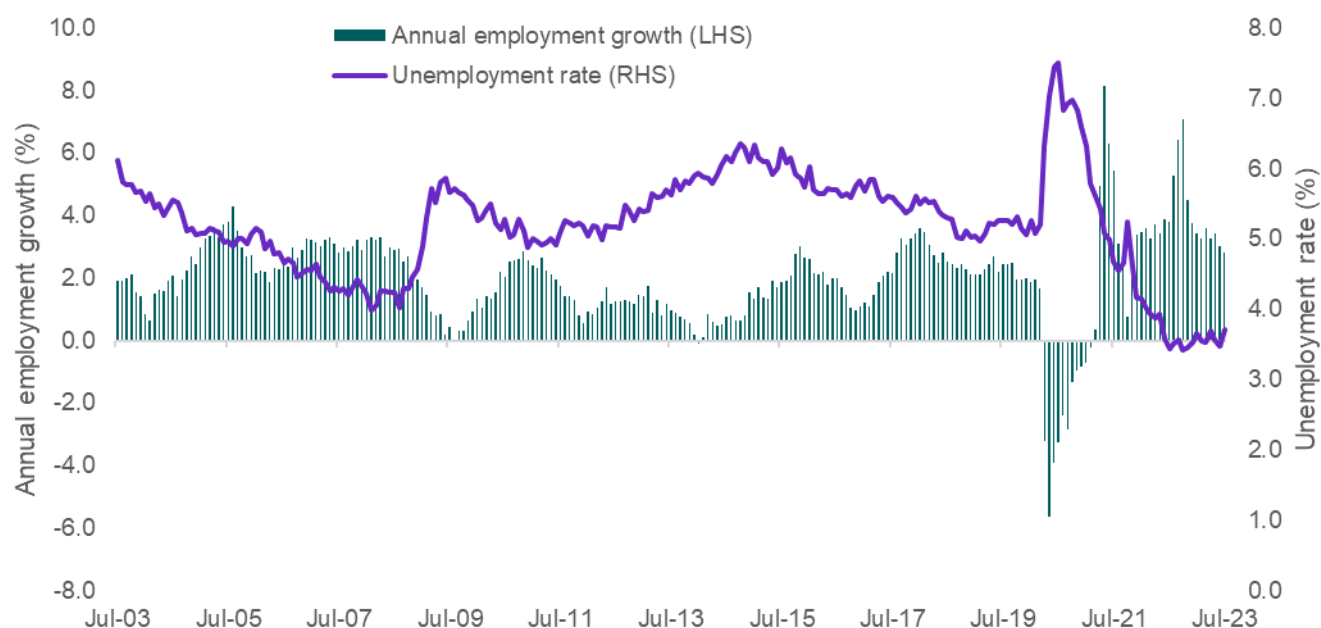
	Jul-23	Monthly change		Annual change	
		('000)	(%)	('000)	(%)
Employment ('000)	14,026.7	-14.6	-0.1	387.1	2.8
Full-time employment ('000)	9,839.8	-24.2	-0.2	386.1	4.1
Part-time employment ('000)	4,186.9	9.6	0.2	0.9	0.0
Hours worked (million hours)	1,952.0	3.9	0.2	96.7	5.2
Participation rate (%)	66.7	-	-0.1 pts	-	0.2 pts
Unemployment rate (%)	3.7	-	0.2 pts	-	0.3 pts
Youth (15-24 years) unemployment rate (%)	8.6	-	0.8 pts	-	1.5 pts

The latest ABS *Labour Force Survey* results show that underlying labour market conditions remain strong, despite some softening in July 2023. Seasonally adjusted **employment** decreased by 14,600 over the month, to 14,026,700 in July 2023, although this follows two consecutive monthly increases (in May and June) totalling 107,900. Employment is now 387,100 (or 2.8%) above the level recorded a year ago.

Full-time employment decreased by 24,200 over the month, to 9,839,800 in July, although it is 386,100 (or 4.1%) above the level recorded in July 2022. Part-time employment rose by 9,600 over the month, to 4,186,900 in July 2023, but was reasonably flat over the year.

Hours worked increased by 3.9 million hours in July 2023, to 1,952.0 million hours, and is 96.7 million hours (or 5.2%) above the level recorded a year ago.

The **unemployment rate** increased by 0.2 percentage points over the month, to 3.7% in July 2023, but is still close to 50-year lows. The **participation rate** declined by 0.1 percentage points over the month, to 66.7% in July 2023, but remains close to the record high of 66.9% in May 2023.



EMPLOYMENT

	Jul-23	Monthly change		Annual change	
		('000)	(%)	('000)	(%)
Total employment ('000)	14,026.7	-14.6	-0.1	387.1	2.8
Male	7,370.9*	10.5	0.1	219.3	3.1
Female	6,655.7	-25.2	-0.4	167.7	2.6
Full-time employment ('000)	9,839.8	-24.2	-0.2	386.1	4.1
Male	5,997.5*	2.4	0.0	177.6	3.1
Female	3,842.3	-26.7	-0.7	208.5	5.7
Part-time employment ('000)	4,186.9	9.6	0.2	0.9	0.0
Male	1,373.4*	8.1	0.6	41.7	3.1
Female	2,813.4	1.5	0.1	-40.8	-1.4

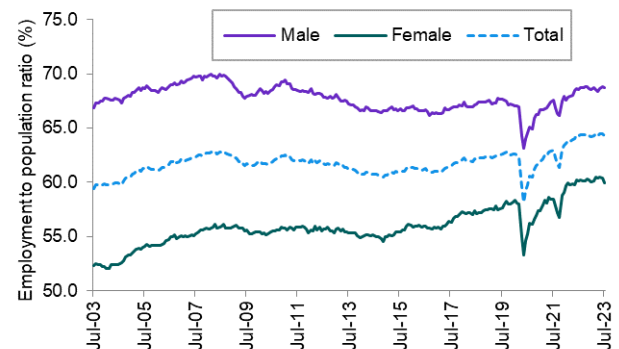
Note: *Record High

Male full-time, part-time and total employment stood at record highs in July 2023. While female full-time employment decreased over the month, the rate of full-time employment growth for women (5.7%) continued to outpace that for men (3.1%) over the last year.

EMPLOYMENT TO POPULATION RATIO

	Jul-23	Monthly change (% pts)	Annual change (% pts)
Employment to population ratio (%)	64.3	-0.2	0.0
Male	68.7	-0.1	0.2
Female	60.0	-0.4	-0.1

The employment to population ratio fell over the month, to 64.3% in July 2023, although it remains close to the equal record high, of 64.5%.

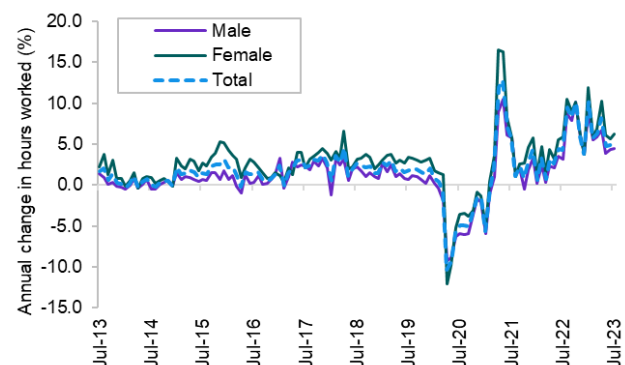


HOURS WORKED

	Jul-23	Monthly change		Annual change	
		(millions)	(%)	(millions)	(%)
Total hours worked (millions)	1,952.0	3.9	0.2	96.7	5.2
Male	1,120.0	-1.6	-0.1	47.9	4.5
Female	832.0	5.5	0.7	48.8	6.2

Total hours worked are 5.2% above the level recorded a year ago, outpacing the 2.8% increase in employment over the period.

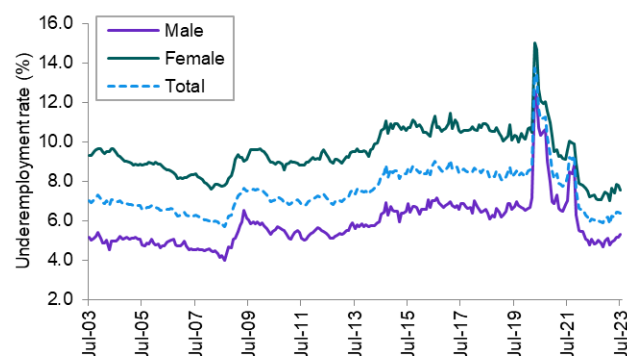
The ABS has advised that the strength of total hours worked over the past year, relative to employment growth, shows the demand for labour is continuing to be met, to some extent, by people working more hours.



UNDEREMPLOYMENT

	Jul-23	Monthly change ('000)	Monthly change (%)	Annual change ('000)	Annual change (%)
Underemployment ('000)	929.9	-3.9	-0.4	79.5	9.4
Male	408.4	13.6	3.5	49.8	13.9
Female	521.5	-17.6	-3.3	29.8	6.1
Underemployment rate (%)	6.4	-	0.0 pts	-	0.4 pts
Male	5.3	-	0.2 pts	-	0.5 pts
Female	7.5	-	-0.3 pts	-	0.2 pts

The underemployment rate was steady over the month, at 6.4% in July 2023. While the underemployment rate rose over the year, by 0.4 percentage points, it has fallen significantly since the pandemic began in March 2020.

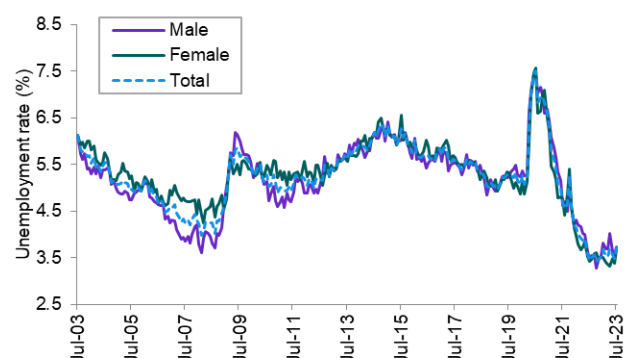


UNEMPLOYMENT

	Jul-23	Monthly change ('000)	Monthly change (%)	Annual change ('000)	Annual change (%)
Unemployment ('000)	541.0	35.6	7.0	55.5	11.4
Male	285.3	13.3	4.9	29.0	11.3
Female	255.7	22.3	9.5	26.5	11.5
Unemployment rate (%)	3.7	-	0.2 pts	-	0.3 pts
Male	3.7	-	0.2 pts	-	0.3 pts
Female	3.7	-	0.3 pts	-	0.3 pts

The unemployment rate increased by 0.2 percentage points over the month, to 3.7% in July 2023, but remains close to 50-year lows.

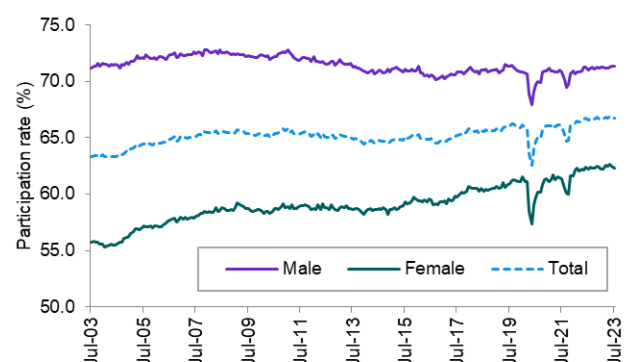
Both the male and female unemployment rate rose over the month, with both rates now higher than they were a year ago.



PARTICIPATION

	Jul-23	Monthly change (% pts)	Annual change (% pts)
Participation rate (%)	66.7	-0.1	0.2
Male	71.4	0.1	0.4
Female	62.3	-0.2	0.1

The participation rate, of 66.7% in July 2023, remains close to the record high of 66.9% recorded in May 2023.

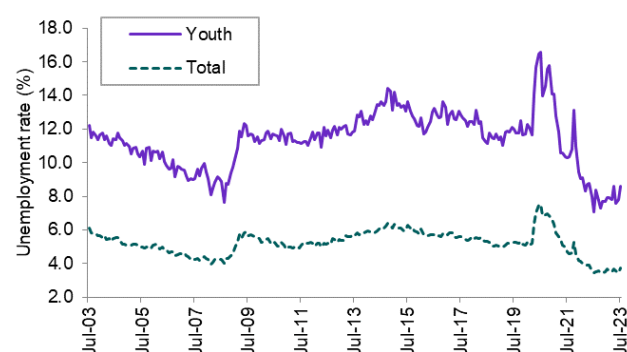


YOUTH (15-24 YEARS)

Youth (15-24 years)	Jul-23	Monthly change (%)	Annual change (%)
Employment ('000)	2,178.0	-5.6 (-0.3%)	56.4 (2.7%)
Employment to population ratio (%)	65.1	-0.5 pts	-1.7 pts
Unemployment rate (%)	8.6	0.8 pts	1.5 pts
Participation rate (%)	71.0	-0.1 pts	-0.8 pts
Underemployment rate (%)	14.5	-1.2 pts	0.4 pts

Labour market conditions for youth softened in July 2023, with youth employment decreasing by 5,600 over the month.

The youth unemployment rate increased by 0.8 percentage points over the month, while the youth participation rate fell by 0.1 percentage points.



STATES AND TERRITORIES

	Employment ('000)					Unemployment rate (%)			Participation rate (%)		
	Jul-23	Monthly change		Annual change		Jul-23	Monthly change	Annual change	Jul-23	Monthly change	Annual change
		('000)	(%)	('000)	(%)		(% pts)	(% pts)		(% pts)	(% pts)
New South Wales	4,348.5	-24.6	-0.6	108.2	2.6	3.3	0.4	0.0	65.8	-0.3	0.0
Victoria	3,654.3*	16.5	0.5	149.3	4.3	3.6	-0.1	0.4	67.7	0.1	1.1
Queensland	2,831.6	-22.8	-0.8	47.9	1.7	4.5	0.8	0.7	66.4	-0.1	-0.5
South Australia	953.0	3.8	0.4	43.6	4.8	4.0	-0.1	0.0	64.3	0.1	1.5
Western Australia	1,541.3	15.0	1.0	22.1	1.5	3.4	-0.2	0.1	68.4	0.3	-1.1
Tasmania	287.1	-2.9	-1.0	4.0	1.4	4.7	1.2	1.2	62.4	0.1	0.8
Northern Territory	138.0	-0.2	-0.2	1.2	0.9	3.9	0.5	0.2	73.0	0.2	-0.1
Australian Capital Territory	263.5	-0.5	-0.2	8.9	3.5	3.8	-0.1	0.6	72.7	-0.4	1.3
Australia	14,026.7	-14.6	-0.1	387.1	2.8	3.7	0.2	0.3	66.7	-0.1	0.2

Note: *Record High

Employment rose over the month in Victoria (up by 16,500), Western Australia (up by 15,000) and South Australia (up by 3,800) but fell in all other jurisdictions.

- Employment was at a record high in Victoria in July 2023.

It is also worth noting that all jurisdictions, except for Queensland (4.5%) and Tasmania (4.7%), recorded an unemployment rate of 4.0% or lower in July 2023.

The participation rate fell over the month in New South Wales, Queensland and the Australian Capital Territory but all other jurisdictions recorded increases.

Youth (15-24 years) unemployment rate	Jul-23	Monthly change (% pts)	Annual change (% pts)
New South Wales	6.6††	0.0	-2.2
Victoria	8.5	0.2	-1.4
Queensland	8.4	0.3	-1.3
South Australia	9.4	0.1	-0.1
Western Australia	8.1	0.1	-1.1
Tasmania	10.5	0.4	0.3
Northern Territory	9.0	0.1	0.5
Australian Capital Territory	6.8	0.3	-1.3
Australia	8.6	0.8	1.5

Data for the states and territories are 12-month averages of *original* estimates, while the data for Australia are in *seasonally adjusted* terms.

Note: ††Equal lowest rate since January 1979 (earliest available 12-month average data)

The youth (15-24 years) unemployment rate in New South Wales in July 2023 (at 6.6%) is the equal lowest rate recorded since the beginning of the series in January 1979¹.

¹ Earliest available 12-month average *original* data.