



ABS Labour Force Results – June 2023

The data in this document are sourced from ABS, *Labour Force, Australia, June 2023* and are in seasonally adjusted terms (unless stated otherwise). Note that changes are calculated from more detailed data and may not match changes calculated manually from the figures presented in the text and tables.

OVERVIEW

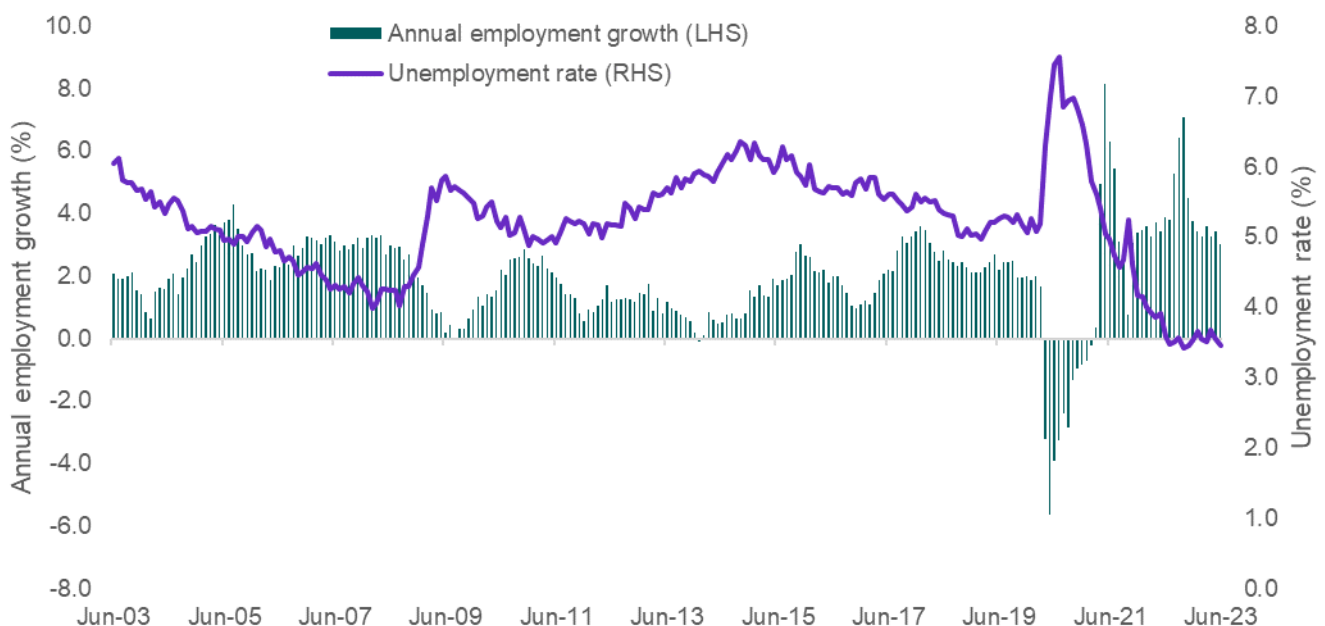
	Jun-23	Monthly change		Annual change	
		('000)	(%)	('000)	(%)
Employment ('000)	14,046.1*	32.6	0.2	409.9	3.0
<i>Full-time employment ('000)</i>	9,868.9*	39.3	0.4	379.7	4.0
<i>Part-time employment ('000)</i>	4,177.1	-6.7	-0.2	30.2	0.7
Hours worked (million hours)	1,947.3	6.4	0.3	87.5	4.7
Participation rate (%)	66.8	-	-0.1	-	0.1
Unemployment rate (%)	3.5	-	-0.1	-	-0.1
Youth (15-24 years) unemployment rate (%)	7.8	-	0.1	-	-0.2

Note: *Record High

The latest ABS *Labour Force Survey* results show that labour market conditions remained strong in June, with seasonally adjusted **employment** increasing by 32,600 (or 0.2%) over the month, to a record high, of 14,046,100. Employment is now 409,900 (or 3.0%) above the level recorded a year ago. The rise in employment over the month was driven, entirely, by **full-time employment**, which increased by 39,300 (or 0.4%), to a record high of 9,868,900, and is now 379,700 (or 4.0%) above the level recorded in June 2022. Both **male and female employment** increased over the month, to a record high of 7,359,200 and 6,686,800, respectively in June 2023.

Hours worked increased by 6.4 million hours (or 0.3%) in June 2023, to 1,947.3 million hours, and is 87.5 million hours (or 4.7%) above the level recorded a year ago.

The **unemployment rate** decreased marginally over the month, to 3.5% in June 2023. The **participation rate** declined by 0.1 percentage points over the month, to 66.8% in June 2023, but remains close to the record high of 66.9% in May 2023. The **female participation rate** fell by 0.2 percentage points over the month, to 62.5% in June 2023, but remains close to the record high of 62.7% in May 2023.



EMPLOYMENT

	Jun-23	Monthly change		Annual change	
		('000)	(%)	('000)	(%)
Total employment ('000)	14,046.1*	32.6	0.2	409.9	3.0
Male	7,359.2*	28.3	0.4	214.6	3.0
Female	6,686.8*	4.3	0.1	195.3	3.0
Full-time employment ('000)	9,868.9*	39.3	0.4	379.7	4.0
Male	5,994.7*	30.4	0.5	160.1	2.7
Female	3,874.3*	8.9	0.2	219.5	6.0
Part-time employment ('000)	4,177.1	-6.7	-0.2	30.2	0.7
Male	1,364.6	-2.1	-0.2	54.4	4.2
Female	2,812.6	-4.6	-0.2	-24.2	-0.9

Note: *Record High

Both male and female full-time employment are at record highs, although the rate of full-time employment growth for women (6.0%) has outpaced that for men (2.7%) over the last year.

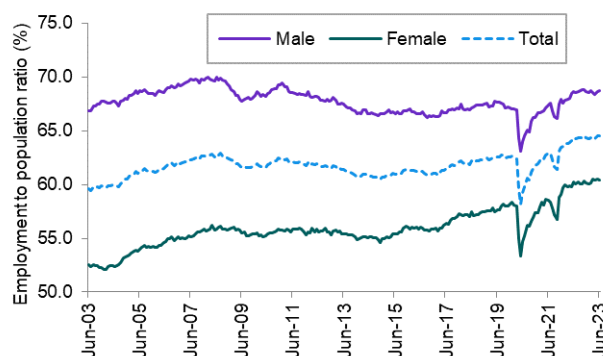
EMPLOYMENT TO POPULATION RATIO

	Jun-23	Monthly change (% pts)	Annual change (% pts)
Employment to population ratio (%)	64.5**	0.0	0.1
Male	68.8	0.1	0.1
Female	60.4	-0.1	0.1

Note: **Equal Record High

The employment to population ratio, at 64.5% in June 2023, is at an equal record high.

Both the male and female employment to population ratios have increased over the last year, with the female employment population ratio remaining close to the equal record high – of 60.5%.

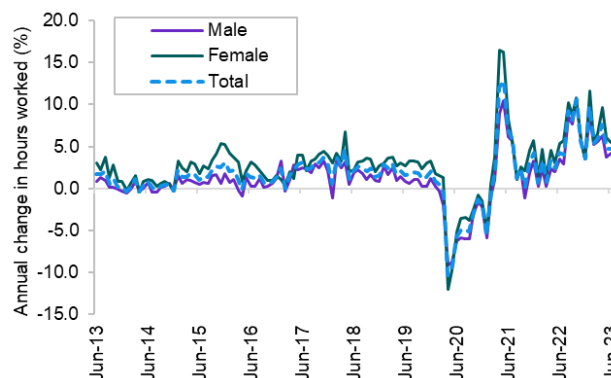


HOURS WORKED

	Jun-23	Monthly change		Annual change	
		(millions)	(%)	(millions)	(%)
Total hours worked (millions)	1,947.3	6.4	0.3	87.5	4.7
Male	1,121.4	8.3	0.7	44.5	4.1
Female	825.9	-1.9	-0.2	43.0	5.5

Total hours worked are 4.7% above the level recorded a year ago, outpacing the 3.0% increase in employment.

The ABS has advised that the strength of total hours worked since late 2022, relative to employment growth, has shown demand for labour in a tight market is being met, to some extent, by people working more hours.

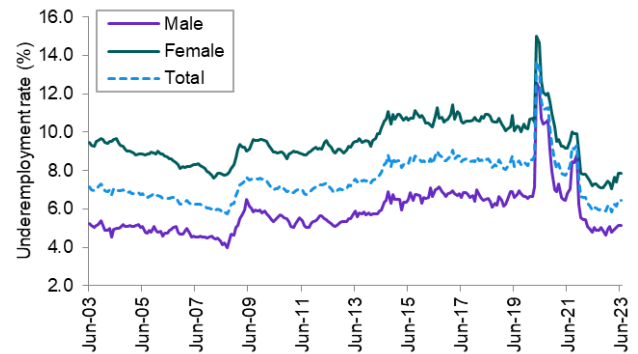


UNDEREMPLOYMENT

	Jun-23	Monthly change ('000)	Monthly change (%)	Annual change ('000)	Annual change (%)
Underemployment ('000)	935.2	-1.1	-0.1	69.9	8.1
Male	392.9	1.3	0.3	19.3	5.2
Female	542.3	-2.4	-0.4	50.6	10.3
Underemployment rate (%)	6.4	-	0.0 pts	-	0.3 pts
Male	5.1	-	0.0 pts	-	0.1 pts
Female	7.8	-	0.0 pts	-	0.5 pts

The underemployment rate remained steady over the month, at 6.4% in June 2023.

The underemployment rate has fallen significantly since the pandemic began in March 2020.

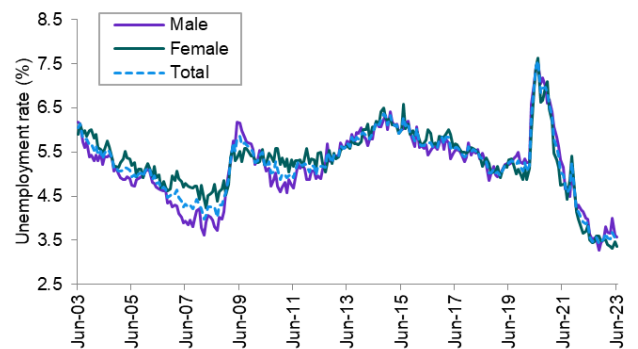


UNEMPLOYMENT

	Jun-23	Monthly change ('000)	Monthly change (%)	Annual change ('000)	Annual change (%)
Unemployment ('000)	504.4	-10.9	-2.1	-1.6	-0.3
Male	271.9	-3.1	-1.1	2.1	0.8
Female	232.5	-7.8	-3.3	-3.8	-1.6
Unemployment rate (%)	3.5	-	-0.1 pts	-	-0.1 pts
Male	3.6	-	-0.1 pts	-	-0.1 pts
Female	3.4	-	-0.1 pts	-	-0.2 pts

The unemployment rate fell marginally over the month, to 3.5% in June 2023.

The female unemployment rate fell by 0.1 percentage points over the month, to 3.4% in June 2023.

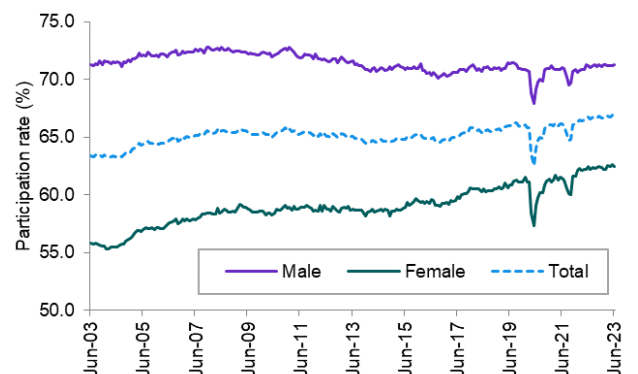


PARTICIPATION

	Jun-23	Monthly change (% pts)	Annual change (% pts)
Participation rate (%)	66.8	-0.1	0.1
Male	71.3	0.1	0.1
Female	62.5	-0.2	0.0

The participation rate, of 66.8% in June 2023, remains close to the record high of 66.9% recorded last month.

The female participation rate, of 62.5% in June 2023, also remains near the record high, of 62.7%.



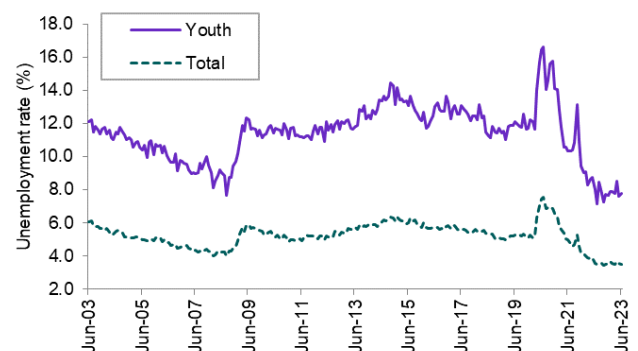
YOUTH (15-24 YEARS)

Youth (15-24 years)	Jun-23	Monthly change	Annual change
Employment ('000)	2,182.9*	21.1 (1.0%)	91.8 (4.4%)
Employment to population ratio (%)	65.6	0.4 pts	-0.7 pts
Unemployment rate (%)	7.8	0.1 pts	-0.2 pts
Participation rate (%)	71.1	0.3 pts	-0.8 pts
Underemployment rate (%)	15.7	1.3 pts	1.8 pts

Note: *Record High

Labour market conditions for youth improved in June 2023, with youth employment increasing to a record high.

While the youth unemployment rate increased over the month, this occurred in conjunction with a rise in the youth participation rate.



STATES AND TERRITORIES

	Employment ('000)					Unemployment rate (%)			Participation rate (%)		
	Jun-23	Monthly change		Annual change		Jun-23	Monthly change (% pts)	Annual change (% pts)	Jun-23	Monthly change (% pts)	Annual change (% pts)
		('000)	(%)	('000)	(%)						
New South Wales	4,373.8*	16.2	0.4	140.7	3.3	2.9 [^]	-0.1	-0.5	66.1	0.0	0.2
Victoria	3,636.1*	7.5	0.2	123.6	3.5	3.7	0.0	0.4	67.6	0.0	0.6
Queensland	2,855.6*	0.9	0.0	72.4	2.6	3.6	-0.3	-0.4	66.5	-0.4	-0.7
South Australia	948.9	-7.2	-0.8	38.0	4.2	4.2	0.2	-0.2	64.3	-0.5	1.0
Western Australia	1,527.1	-9.4	-0.6	11.6	0.8	3.6	-0.1	0.2	68.2	-0.6	-1.4
Tasmania	290.4	-0.4	-0.1	8.0	2.8	3.5 ^{^^}	-0.7	-0.7	62.4	-0.6	0.5
Northern Territory	137.8	-4.6	-3.2	4.2	3.1	3.3	0.2	-0.5	72.6	-2.4	1.0
Australian Capital Territory	264.2	-3.9	-1.4	9.0	3.5	3.9	0.8	0.8	73.1	-0.5	1.5
Australia	14,046.1*	32.6	0.2	409.9	3.0	3.5	-0.1	-0.1	66.8	-0.1	0.1

Note: *Record High [^]Lowest rate since the inception of the monthly series in February 1978 ^{^^}Equal lowest rate since the inception of the monthly series in February 1978

Employment rose in New South Wales (up by 16,200), Victoria (up by 7,500) and Queensland (up by 900) but fell in all other jurisdictions.

- Employment was at a record high in New South Wales, Victoria and Queensland in June 2023.

It is also worth noting that all jurisdictions, except for South Australia (4.2%), recorded an unemployment rate of less than 4.0% in June 2023.

- The unemployment rate in New South Wales fell to 2.9%, the lowest rate recorded since the inception of the monthly Labour Force series in February 1978. The unemployment rate in Tasmania fell to its equal lowest rate (of 3.5%) since February 1978.

The participation rate fell in all jurisdictions, except for New South Wales and Victoria which remained steady.

Youth (15-24 years) unemployment rate	Jun-23	Monthly change (% pts)	Annual change (% pts)
New South Wales	6.6†	-0.1	-2.5
Victoria	8.3	0.1	-2.0
Queensland	8.2	-0.1	-1.9
South Australia	9.3††	0.0	-0.2
Western Australia	8.0	0.0	-1.2
Tasmania	10.1	-0.1	-0.2
Northern Territory	9.0	0.0	0.5
Australian Capital Territory	6.5	0.1	-1.6
Australia	7.8	0.1	-0.2

Data for the states and territories are 12-month averages of *original* estimates, while the data for Australia are in *seasonally adjusted* terms.

Note: †Lowest rate since January 1979 (earliest available 12-month average data) ††Equal lowest rate since January 1979 (earliest available 12-month average data)

The youth (15-24 years) unemployment rate in June 2023 in New South Wales (at 6.6%) is the lowest rate recorded since the beginning of the series in January 1979¹, while the youth unemployment rate in South Australia (at 9.3%) was the equal lowest rate recorded since January 1979.

¹ Earliest available 12-month average *original* data.