



Employment Region Industry profile

South Eastern Melbourne and Peninsula Employment Region

Release date: 28 April 2023

Overview

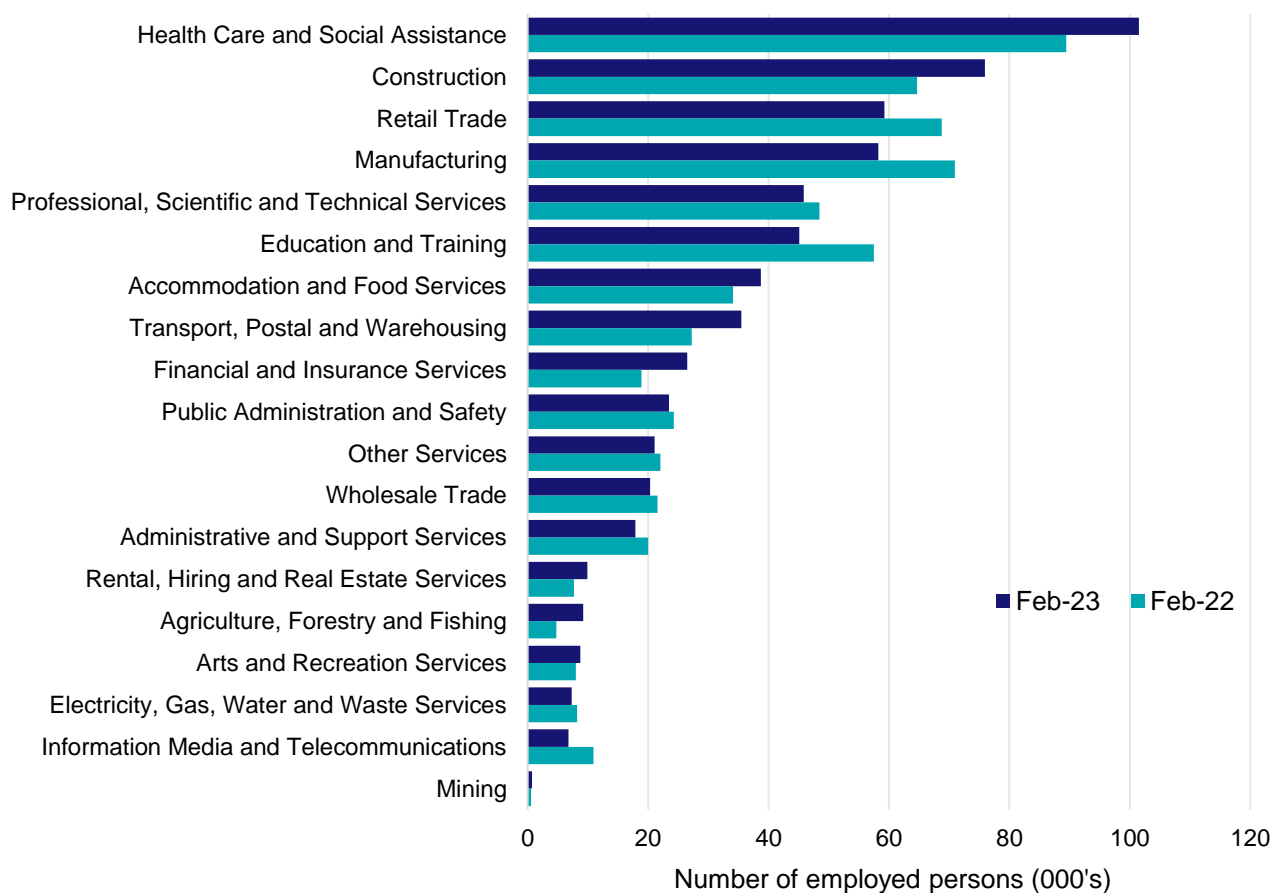
In February 2023, there were around 612,000 people employed in the South Eastern Melbourne and Peninsula Employment Region. The 5 largest employing industries in the region were Health Care and Social Assistance, Construction, Retail Trade, Manufacturing, and Professional, Scientific and Technical Services. Together these 5 industries accounted for 56% of employment in the region.

Over the year to February 2023, employment in:

- Health Care and Social Assistance rose by 13.5% to stand at 101,500
- Construction rose by 17.5% to stand at 75,900
- Retail Trade fell by 13.9% to stand at 59,200.

In Health Care and Social Assistance in the South Eastern Melbourne and Peninsula Employment Region, 55% of workers were employed full-time; 79% were female; and the median age of the workforce was 41.

Employment by industry, February 2023 and February 2022



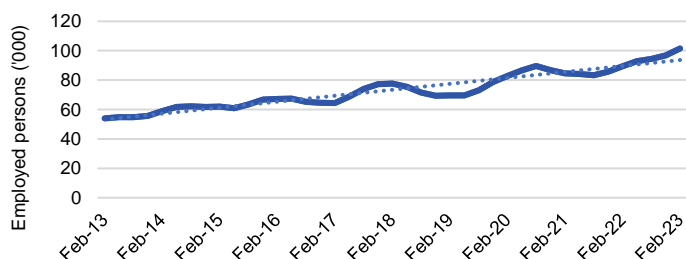
Source: ABS Labour Force Survey*, Detailed, four quarter averages, February 2023. Note that total employment for the region (four quarter averaged data) may not match data published in the Employment Region Labour Market dashboards (6 month averaged data).

*ABS Labour Force Survey data are based on the combined SA4s of Melbourne - South East; and Mornington Peninsula.

Notes: Data are the latest available. Estimates should be treated with caution, as data can be volatile at a regional level. For any enquiries related to the data in this report, please contact RegionalWorkforceAssessment@jobsandskills.gov.au

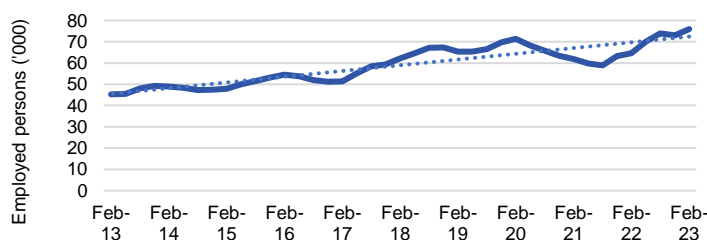
Five largest employing industries: key statistics

Health Care and Social Assistance



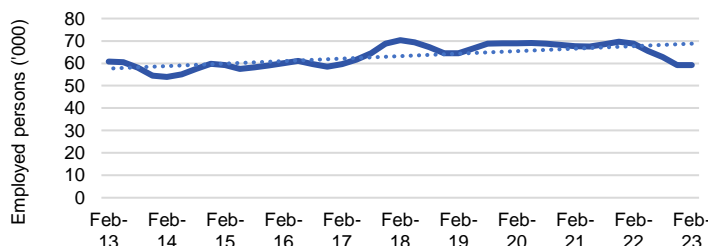
Number employed (Feb-23):	101,500
1 year employment change:	13.5%
5 year employment change:	30.6%
10 year employment change:	88.0%
Youth share of employment:	9.6%
Mature age share of employment:	16.3%

Construction



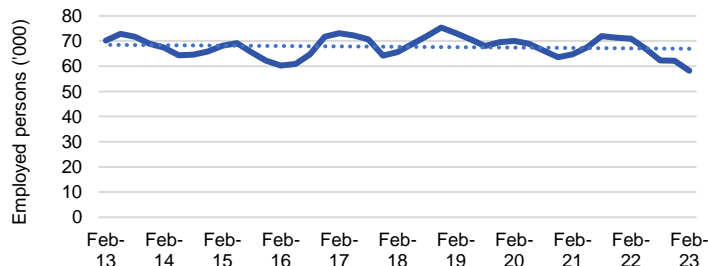
Number employed (Feb-23):	75,900
1 year employment change:	17.5%
5 year employment change:	22.2%
10 year employment change:	67.7%
Youth share of employment:	11.6%
Mature age share of employment:	9.5%

Retail Trade



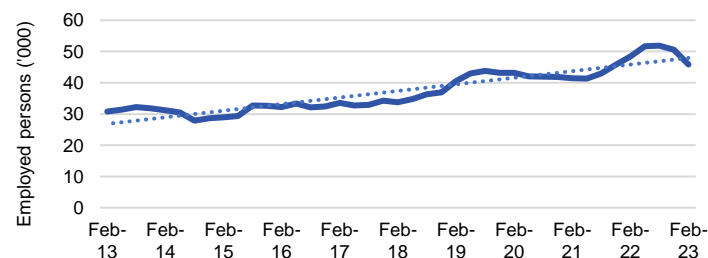
Number employed (Feb-23):	59,200
1 year employment change:	-13.9%
5 year employment change:	-15.8%
10 year employment change:	-2.5%
Youth share of employment:	22.0%
Mature age share of employment:	8.3%

Manufacturing



Number employed (Feb-23):	58,200
1 year employment change:	-17.9%
5 year employment change:	-11.3%
10 year employment change:	-17.1%
Youth share of employment:	6.0%
Mature age share of employment:	13.0%

Professional, Scientific and Technical Services



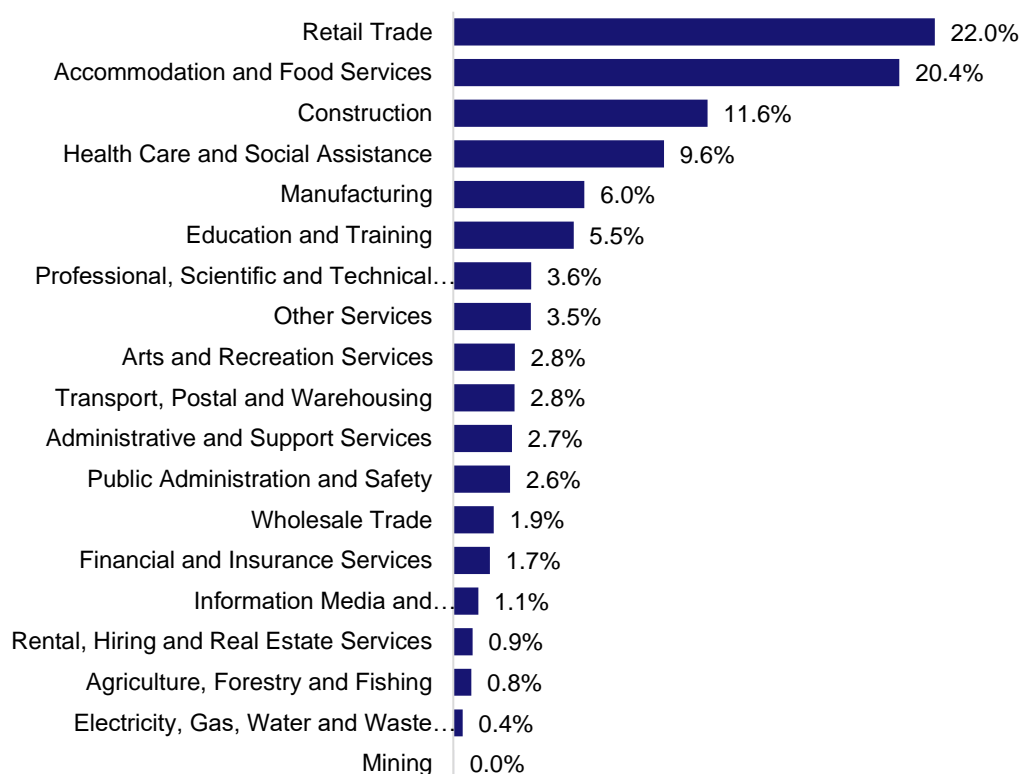
Number employed (Feb-23):	45,800
1 year employment change:	-5.4%
5 year employment change:	35.6%
10 year employment change:	48.9%
Youth share of employment:	3.6%
Mature age share of employment:	6.7%

Source: ABS Labour Force Survey, Detailed, four quarter averages, February 2023, except youth and mature age data which are from the ABS Census of Population and Housing, 2021.

Note: In each chart, the solid line is the level of employment and the dotted line is a simple linear trend line for the 10 year period.

Employment characteristics by Industry

Which industries are youth (aged 15-24) employed in?



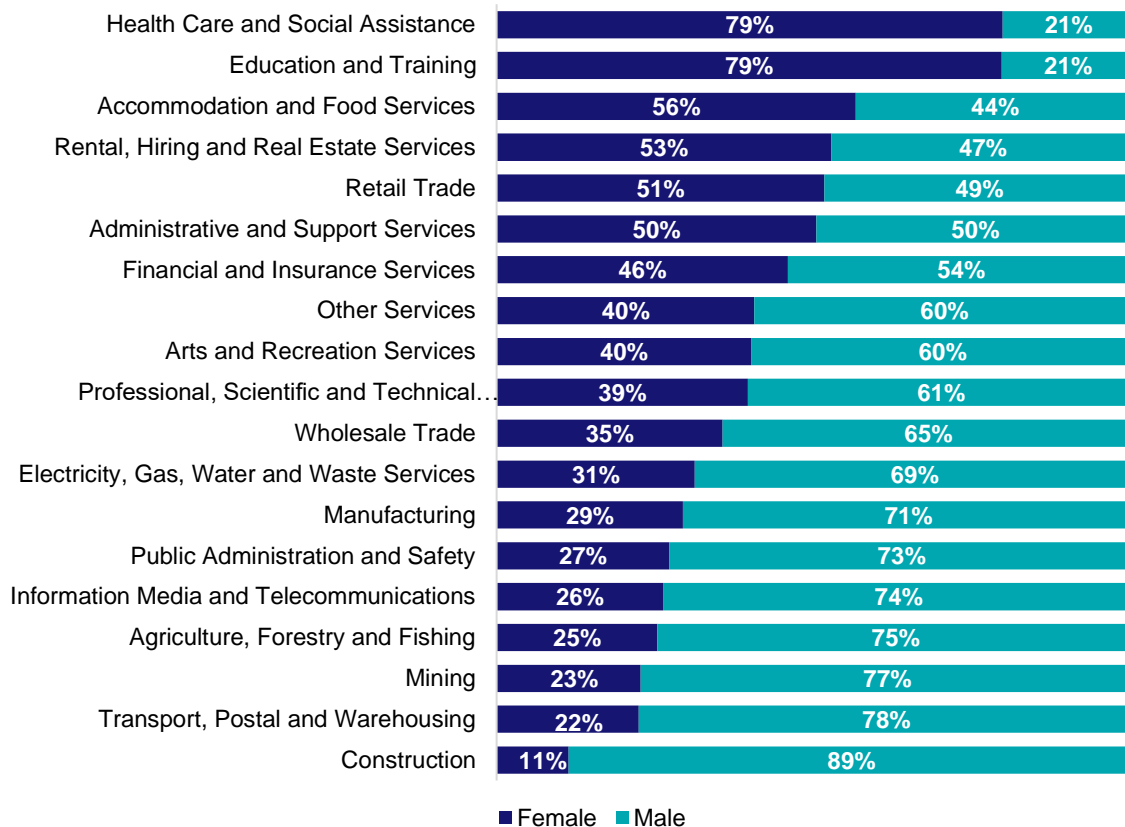
Source: ABS Census of Population and Housing, 2021.

Which industries are mature age persons (aged 55+) employed in?



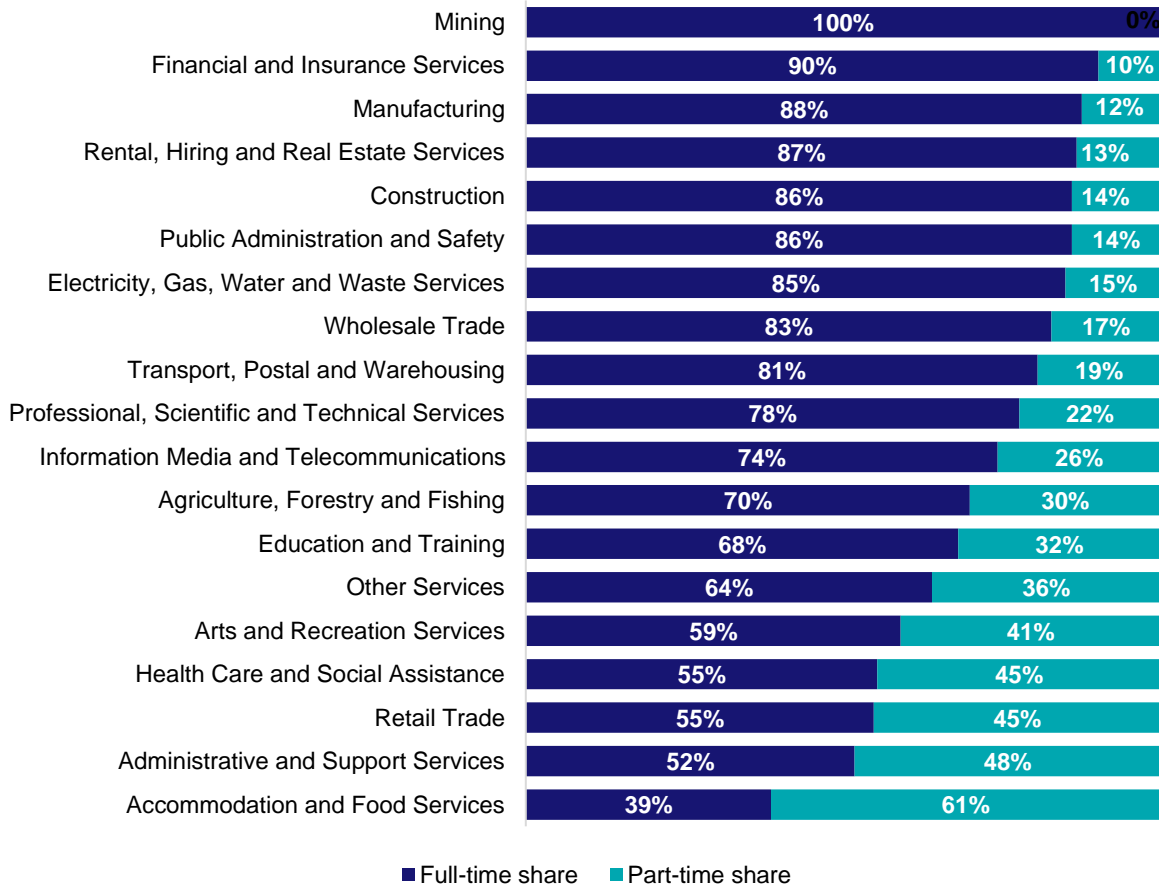
Source: ABS Census of Population and Housing, 2021. Note: SA2 level Census data have been aggregated to the Employment Region level.

Gender share by industry



Source: ABS Labour Force Survey, Detailed, four quarter averages, February 2023.

Full-time and part-time employment status by industry



Source: ABS Labour Force Survey, Detailed, four quarter averages, February 2023.

Appendix

Employment by industry, South Eastern Melbourne and Peninsula, February 2023

Industry (in order of size)	Share of employment in the region Feb-23 (%)	Employed ('000)			1 year change		5 year change		Full-time share %	Part-time share %	Median age *
		Feb-23	Feb-22	Feb-18	('000)	%	('000)	%			
Health Care and Social Assistance	16.6	101.5	89.4	77.7	12.1	13.5	23.8	30.6	55.4	44.6	41
Construction	12.4	75.9	64.6	62.1	11.3	17.5	13.8	22.2	86.1	13.9	37
Retail Trade	9.7	59.2	68.8	70.3	-9.5	-13.9	-11.1	-15.8	54.9	45.1	34
Manufacturing	9.5	58.2	70.9	65.6	-12.7	-17.9	-7.4	-11.3	87.7	12.3	44
Professional, Scientific and Technical Services	7.5	45.8	48.4	33.8	-2.6	-5.4	12.0	35.6	77.8	22.2	40
Education and Training	7.4	45.1	57.5	37.9	-12.4	-21.5	7.2	18.9	68.2	31.8	41
Accommodation and Food Services	6.3	38.7	34.1	34.1	4.6	13.5	4.7	13.7	38.6	61.4	25
Transport, Postal and Warehousing	5.8	35.5	27.2	27.9	8.3	30.3	7.5	27.0	80.7	19.3	42
Financial and Insurance Services	4.3	26.5	18.9	16.8	7.6	40.0	9.7	57.7	90.3	9.7	39
Public Administration and Safety	3.8	23.5	24.3	19.3	-0.8	-3.4	4.1	21.2	86.1	13.9	42
Other Services	3.4	21.1	22.1	29.3	-1.0	-4.4	-8.2	-28.1	64.0	36.0	39
Wholesale Trade	3.3	20.4	21.6	24.3	-1.2	-5.7	-4.0	-16.4	82.9	17.1	43
Administrative and Support Services	2.9	17.9	20.0	23.1	-2.1	-10.7	-5.2	-22.7	51.8	48.2	41
Rental, Hiring and Real Estate Services	1.6	9.9	7.7	7.2	2.2	29.2	2.7	38.3	86.8	13.2	40
Agriculture, Forestry and Fishing	1.5	9.2	4.8	3.4	4.5	93.7	5.8	168.0	70.0	30.0	46
Arts and Recreation Services	1.4	8.8	8.0	7.4	0.7	9.0	1.4	18.3	59.1	40.9	33
Electricity, Gas, Water and Waste Services	1.2	7.3	8.2	7.2	-0.9	-11.2	0.1	1.4	85.1	14.9	42
Information Media and Telecommunications	1.1	6.8	10.9	10.7	-4.2	-38.1	-3.9	-36.8	74.4	25.6	39
Mining	0.1	0.7	0.5	0.9	0.2	29.7	-0.2	-21.7	100.0	0.0	45
All industries	100.0	612.0	608.1	559.3	3.9	0.6	52.7	9.4	70.5	29.5	39

Source: ABS Labour Force Survey, Detailed, four quarter averages, February 2023. *Median age is from the ABS Census of Population and Housing, 2021. Median age has been derived using aggregated SA2s for the Employment Region.

Note: Small cells should be viewed with caution due to small sample sizes and regional volatility.