



Employment Region Industry profile

Perth - North Employment Region

Release date: 28 April 2023

Overview

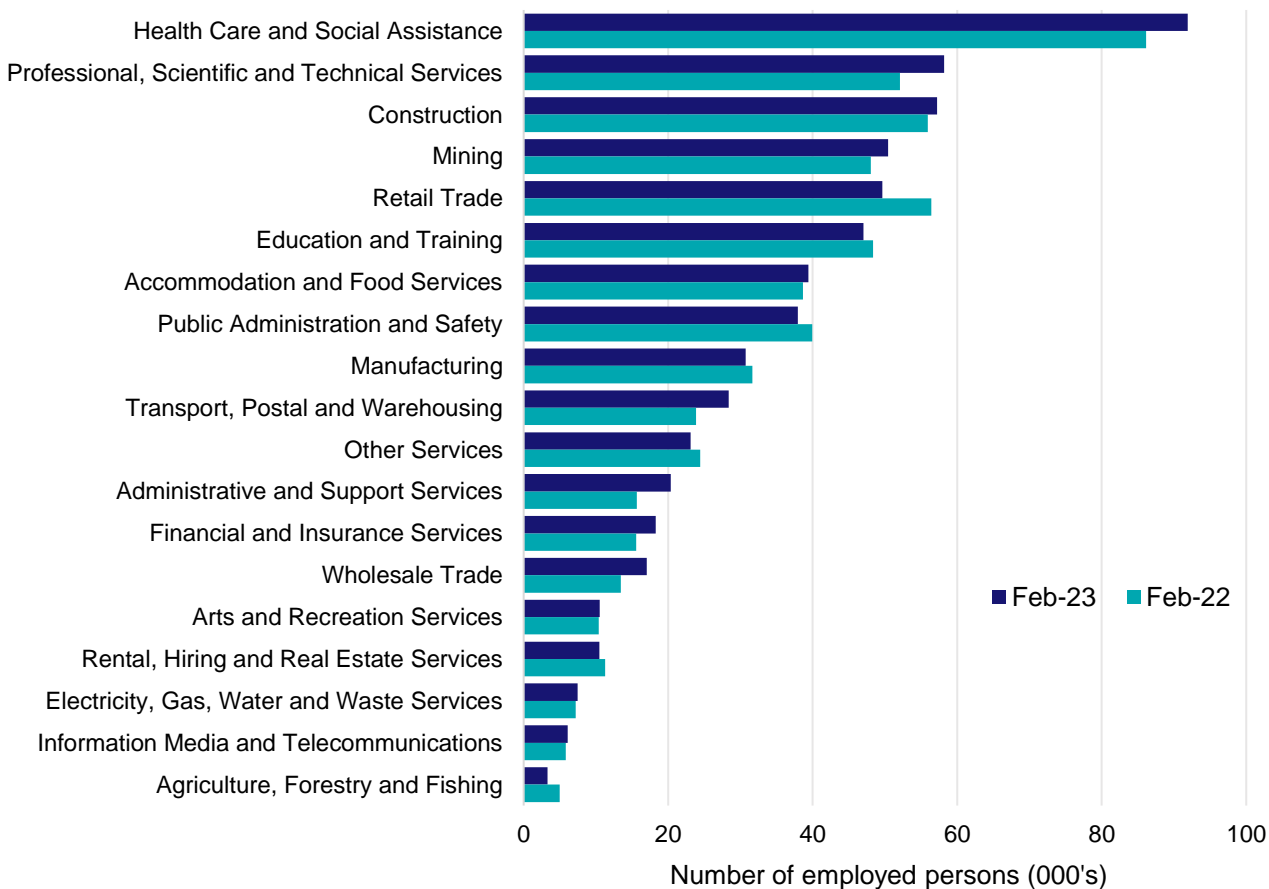
In February 2023, there were around 607,400 people employed in the Perth - North Employment Region. The 5 largest employing industries in the region were Health Care and Social Assistance, Professional, Scientific and Technical Services, Construction, Mining, and Retail Trade. Together these 5 industries accounted for 51% of employment in the region.

Over the year to February 2023, employment in:

- Health Care and Social Assistance rose by 6.7% to stand at 91,900
- Professional, Scientific and Technical Services rose by 11.8% to stand at 58,200
- Construction rose by 2.3% to stand at 57,200.

In Health Care and Social Assistance in the Perth - North Employment Region, 55% of workers were employed full-time; 78% were female; and the median age of the workforce was 41.

Employment by industry, February 2023 and February 2022



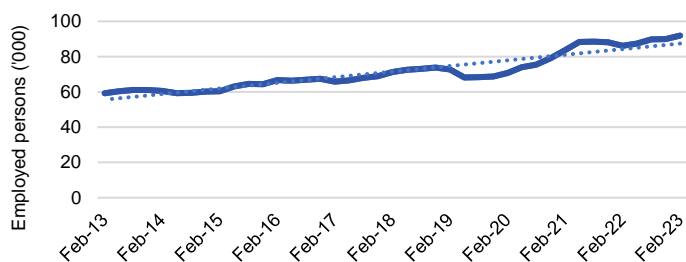
Source: ABS Labour Force Survey*, Detailed, four quarter averages, February 2023. Note that total employment for the region (four quarter averaged data) may not match data published in the Employment Region Labour Market dashboards (6 month averaged data).

*ABS Labour Force Survey data are based on the combined SA4s of Perth - Inner; Perth - North East; and Perth - North West.

Notes: Data are the latest available. Estimates should be treated with caution, as data can be volatile at a regional level. For any enquiries related to the data in this report, please contact RegionalWorkforceAssessment@jobsandskills.gov.au

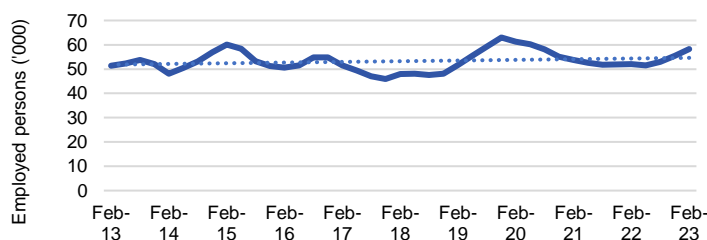
Five largest employing industries: key statistics

Health Care and Social Assistance



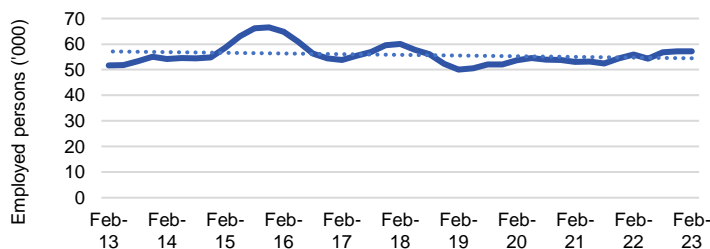
| | |
|---------------------------------|--------|
| Number employed (Feb-23): | 91,900 |
| 1 year employment change: | 6.7% |
| 5 year employment change: | 29.0% |
| 10 year employment change: | 55.2% |
| Youth share of employment: | 9.6% |
| Mature age share of employment: | 16.9% |

Professional, Scientific and Technical Services



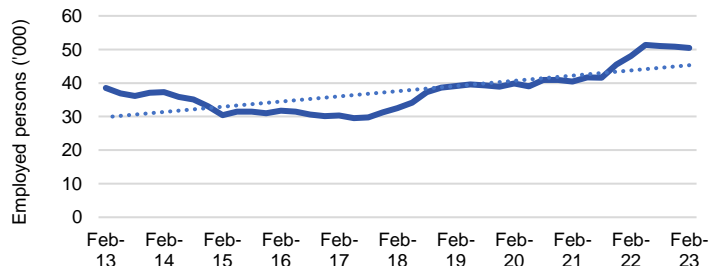
| | |
|---------------------------------|--------|
| Number employed (Feb-23): | 58,200 |
| 1 year employment change: | 11.8% |
| 5 year employment change: | 21.3% |
| 10 year employment change: | 13.2% |
| Youth share of employment: | 4.7% |
| Mature age share of employment: | 8.3% |

Construction



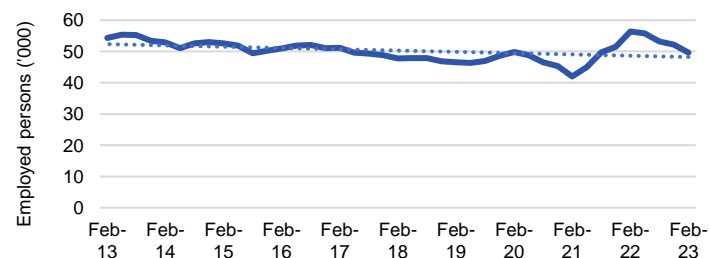
| | |
|---------------------------------|--------|
| Number employed (Feb-23): | 57,200 |
| 1 year employment change: | 2.3% |
| 5 year employment change: | -4.8% |
| 10 year employment change: | 10.6% |
| Youth share of employment: | 7.9% |
| Mature age share of employment: | 8.7% |

Mining



| | |
|---------------------------------|--------|
| Number employed (Feb-23): | 50,400 |
| 1 year employment change: | 4.9% |
| 5 year employment change: | 55.1% |
| 10 year employment change: | 31.0% |
| Youth share of employment: | 2.6% |
| Mature age share of employment: | 5.2% |

Retail Trade



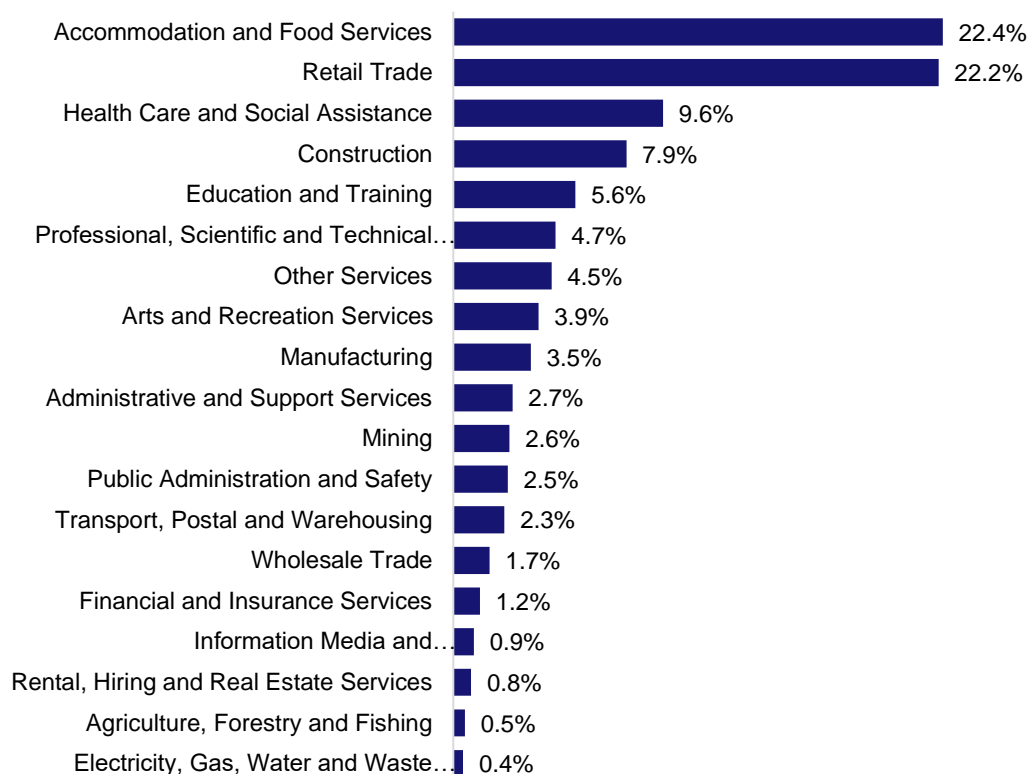
| | |
|---------------------------------|--------|
| Number employed (Feb-23): | 49,600 |
| 1 year employment change: | -12.0% |
| 5 year employment change: | 3.8% |
| 10 year employment change: | -8.7% |
| Youth share of employment: | 22.2% |
| Mature age share of employment: | 7.3% |

Source: ABS Labour Force Survey, Detailed, four quarter averages, February 2023, except youth and mature age data which are from the ABS Census of Population and Housing, 2021.

Note: In each chart, the solid line is the level of employment and the dotted line is a simple linear trend line for the 10 year period.

Employment characteristics by Industry

Which industries are youth (aged 15-24) employed in?



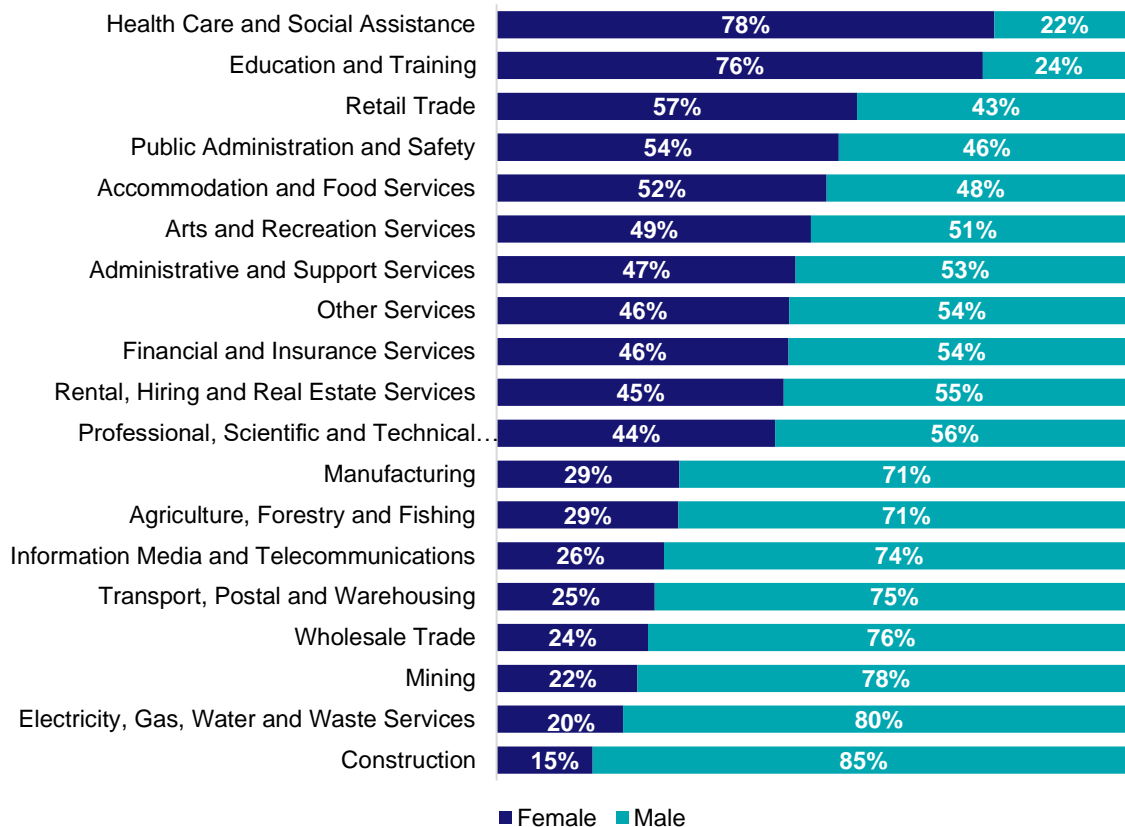
Source: ABS Census of Population and Housing, 2021.

Which industries are mature age persons (aged 55+) employed in?



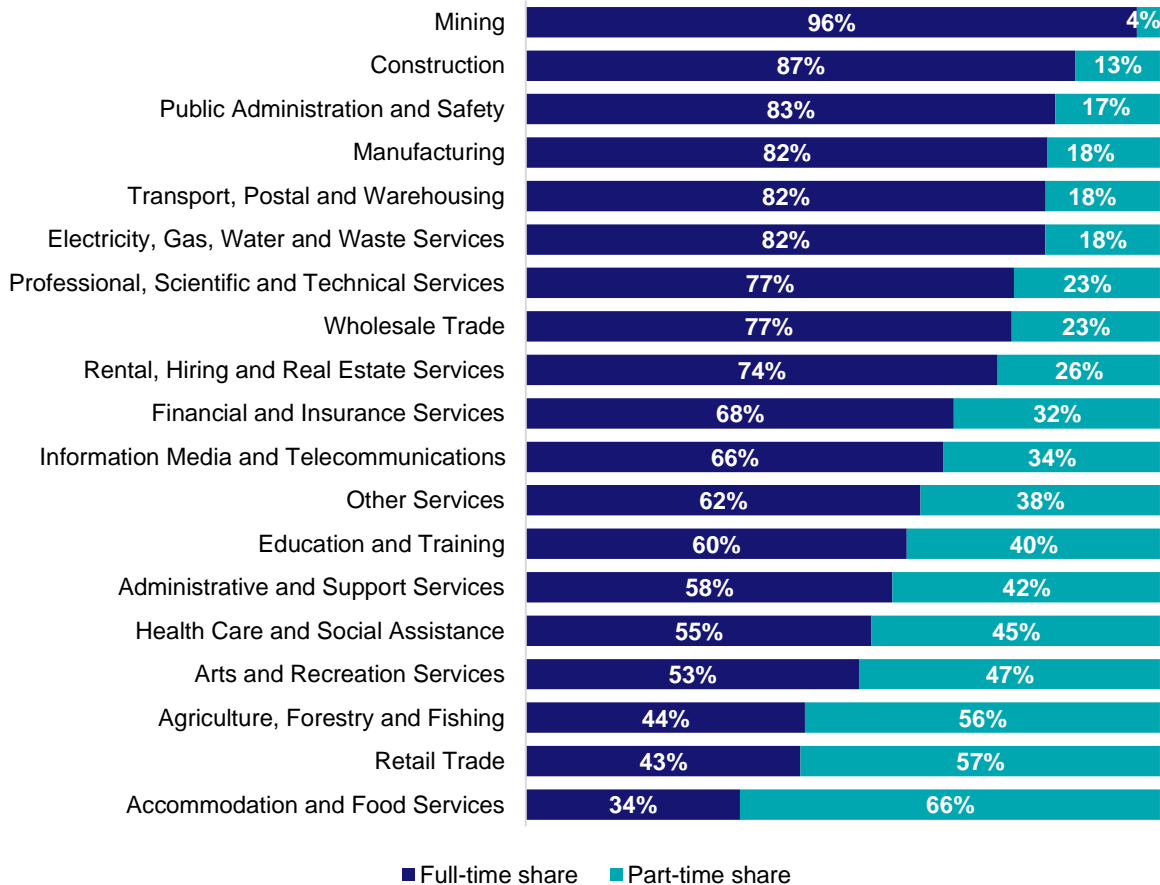
Source: ABS Census of Population and Housing, 2021. Note: SA2 level Census data have been aggregated to the Employment Region level.

Gender share by industry



Source: ABS Labour Force Survey, Detailed, four quarter averages, February 2023.

Full-time and part-time employment status by industry



Source: ABS Labour Force Survey, Detailed, four quarter averages, February 2023.

Appendix

Employment by industry, Perth - North, February 2023

| Industry (in order of size) | Share of employment in the region Feb-23 (%) | Employed ('000) | | | 1 year change | | 5 year change | | Full-time share % | Part-time share % | Median age * |
|---|--|-----------------|--------------|--------------|---------------|------------|---------------|-------------|-------------------|-------------------|--------------|
| | | Feb-23 | Feb-22 | Feb-18 | ('000) | % | ('000) | % | | | |
| Health Care and Social Assistance | 15.1 | 91.9 | 86.1 | 71.2 | 5.8 | 6.7 | 20.7 | 29.0 | 54.5 | 45.5 | 41 |
| Professional, Scientific and Technical Services | 9.6 | 58.2 | 52.1 | 48.0 | 6.1 | 11.8 | 10.2 | 21.3 | 77.0 | 23.0 | 41 |
| Construction | 9.4 | 57.2 | 55.9 | 60.1 | 1.3 | 2.3 | -2.9 | -4.8 | 86.6 | 13.4 | 39 |
| Mining | 8.3 | 50.4 | 48.1 | 32.5 | 2.4 | 4.9 | 17.9 | 55.1 | 96.4 | 3.6 | 40 |
| Retail Trade | 8.2 | 49.6 | 56.4 | 47.8 | -6.8 | -12.0 | 1.8 | 3.8 | 43.3 | 56.7 | 32 |
| Education and Training | 7.7 | 47.0 | 48.4 | 46.2 | -1.3 | -2.8 | 0.8 | 1.8 | 60.1 | 39.9 | 45 |
| Accommodation and Food Services | 6.5 | 39.4 | 38.6 | 31.8 | 0.8 | 2.0 | 7.6 | 24.0 | 33.8 | 66.2 | 25 |
| Public Administration and Safety | 6.2 | 38.0 | 40.0 | 32.3 | -2.0 | -5.0 | 5.6 | 17.4 | 83.5 | 16.5 | 44 |
| Manufacturing | 5.1 | 30.7 | 31.7 | 28.9 | -1.0 | -3.1 | 1.8 | 6.2 | 82.3 | 17.7 | 43 |
| Transport, Postal and Warehousing | 4.7 | 28.4 | 23.8 | 21.4 | 4.5 | 19.0 | 6.9 | 32.4 | 82.0 | 18.0 | 44 |
| Other Services | 3.8 | 23.1 | 24.4 | 22.4 | -1.3 | -5.4 | 0.8 | 3.4 | 62.2 | 37.8 | 38 |
| Administrative and Support Services | 3.3 | 20.3 | 15.7 | 17.6 | 4.7 | 29.9 | 2.7 | 15.3 | 57.8 | 42.2 | 40 |
| Financial and Insurance Services | 3.0 | 18.3 | 15.6 | 15.2 | 2.7 | 17.4 | 3.1 | 20.3 | 67.5 | 32.5 | 42 |
| Wholesale Trade | 2.8 | 17.0 | 13.4 | 14.1 | 3.6 | 26.8 | 2.9 | 20.9 | 76.6 | 23.4 | 43 |
| Arts and Recreation Services | 1.7 | 10.5 | 10.4 | 11.8 | 0.1 | 1.3 | -1.3 | -10.9 | 52.5 | 47.5 | 32 |
| Rental, Hiring and Real Estate Services | 1.7 | 10.5 | 11.3 | 9.7 | -0.8 | -6.9 | 0.7 | 7.5 | 74.4 | 25.6 | 43 |
| Electricity, Gas, Water and Waste Services | 1.2 | 7.5 | 7.2 | 6.9 | 0.2 | 3.4 | 0.6 | 8.8 | 81.9 | 18.1 | 43 |
| Information Media and Telecommunications | 1.0 | 6.1 | 5.8 | 7.7 | 0.3 | 4.3 | -1.6 | -20.8 | 65.9 | 34.1 | 38 |
| Agriculture, Forestry and Fishing | 0.5 | 3.3 | 5.0 | 4.7 | -1.7 | -33.8 | -1.4 | -29.9 | 44.0 | 56.0 | 44 |
| All industries | 100.0 | 607.4 | 589.8 | 530.3 | 17.6 | 3.0 | 77.1 | 14.5 | 67.9 | 32.1 | 40 |

Source: ABS Labour Force Survey, Detailed, four quarter averages, February 2023. *Median age is from the ABS Census of Population and Housing, 2021. Median age has been derived using aggregated SA2s for the Employment Region.

Note: Small cells should be viewed with caution due to small sample sizes and regional volatility.