



# Employment Region Industry profile

## North Eastern Melbourne Employment Region

Release date: 28 April 2023

### Overview

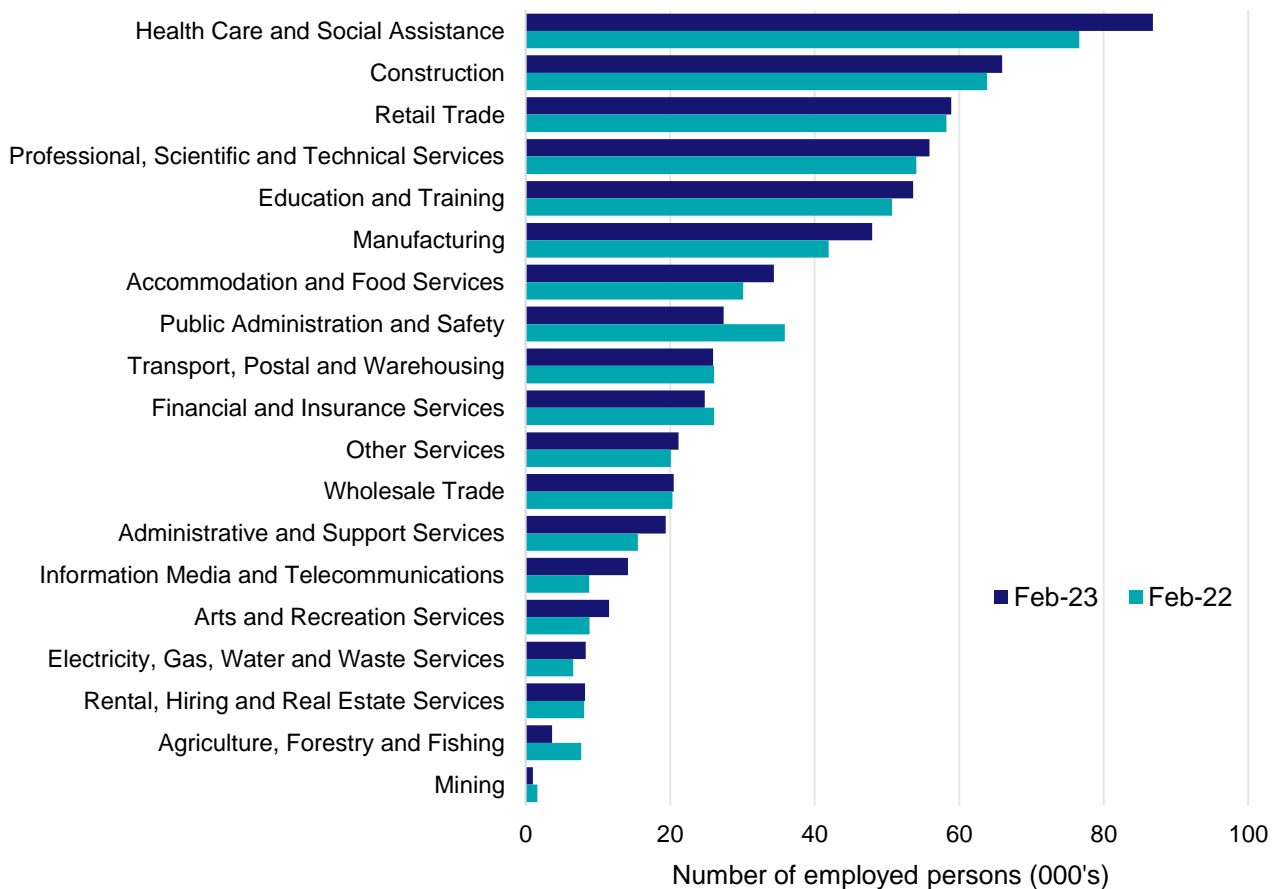
In February 2023, there were around 589,500 people employed in the North Eastern Melbourne Employment Region. The 5 largest employing industries in the region were Health Care and Social Assistance, Construction, Retail Trade, Professional, Scientific and Technical Services, and Education and Training. Together these 5 industries accounted for 54% of employment in the region.

Over the year to February 2023, employment in:

- Health Care and Social Assistance rose by 13.3% to stand at 86,800
- Construction rose by 3.2% to stand at 65,900
- Retail Trade rose by 1.2% to stand at 58,900.

In Health Care and Social Assistance in the North Eastern Melbourne Employment Region, 55% of workers were employed full-time; 82% were female; and the median age of the workforce was 42.

### Employment by industry, February 2023 and February 2022



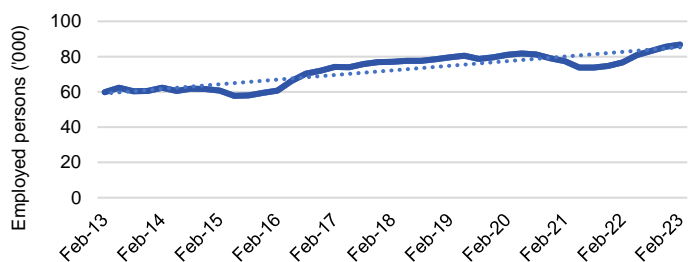
Source: ABS Labour Force Survey\*, Detailed, four quarter averages, February 2023. Note that total employment for the region (four quarter averaged data) may not match data published in the Employment Region Labour Market dashboards (6 month averaged data).

\*ABS Labour Force Survey data are based on the combined SA4s of: Melbourne - North East; and Melbourne - Outer East.

Notes: Data are the latest available. Estimates should be treated with caution, as data can be volatile at a regional level. For any enquiries related to the data in this report, please contact [RegionalWorkforceAssessment@jobsandskills.gov.au](mailto:RegionalWorkforceAssessment@jobsandskills.gov.au)

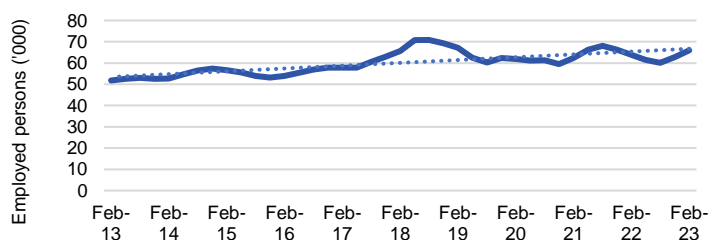
# Five largest employing industries: key statistics

## Health Care and Social Assistance



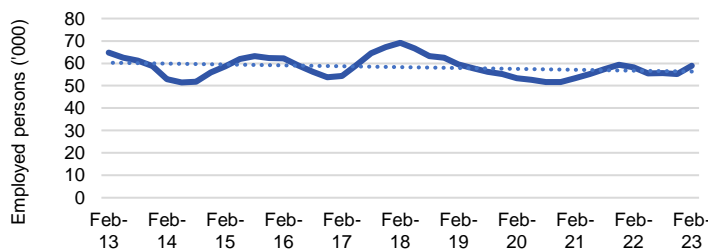
|                                 |        |
|---------------------------------|--------|
| Number employed (Feb-23):       | 86,800 |
| 1 year employment change:       | 13.3%  |
| 5 year employment change:       | 12.6%  |
| 10 year employment change:      | 45.3%  |
| Youth share of employment:      | 9.5%   |
| Mature age share of employment: | 17.1%  |

## Construction



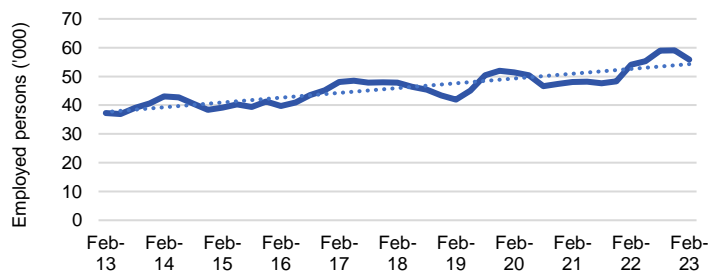
|                                 |        |
|---------------------------------|--------|
| Number employed (Feb-23):       | 65,900 |
| 1 year employment change:       | 3.2%   |
| 5 year employment change:       | 0.5%   |
| 10 year employment change:      | 27.3%  |
| Youth share of employment:      | 13.0%  |
| Mature age share of employment: | 9.6%   |

## Retail Trade



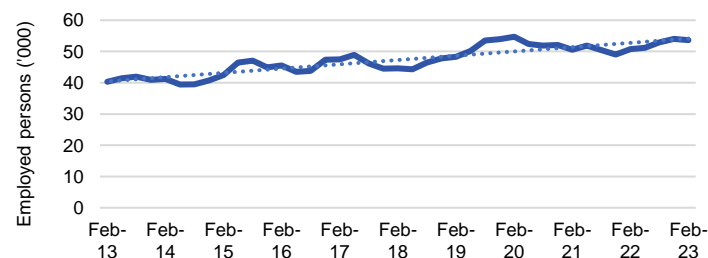
|                                 |        |
|---------------------------------|--------|
| Number employed (Feb-23):       | 58,900 |
| 1 year employment change:       | 1.2%   |
| 5 year employment change:       | -14.8% |
| 10 year employment change:      | -9.0%  |
| Youth share of employment:      | 22.5%  |
| Mature age share of employment: | 8.1%   |

## Professional, Scientific and Technical Services



|                                 |        |
|---------------------------------|--------|
| Number employed (Feb-23):       | 55,900 |
| 1 year employment change:       | 3.4%   |
| 5 year employment change:       | 16.9%  |
| 10 year employment change:      | 50.1%  |
| Youth share of employment:      | 3.9%   |
| Mature age share of employment: | 7.4%   |

## Education and Training



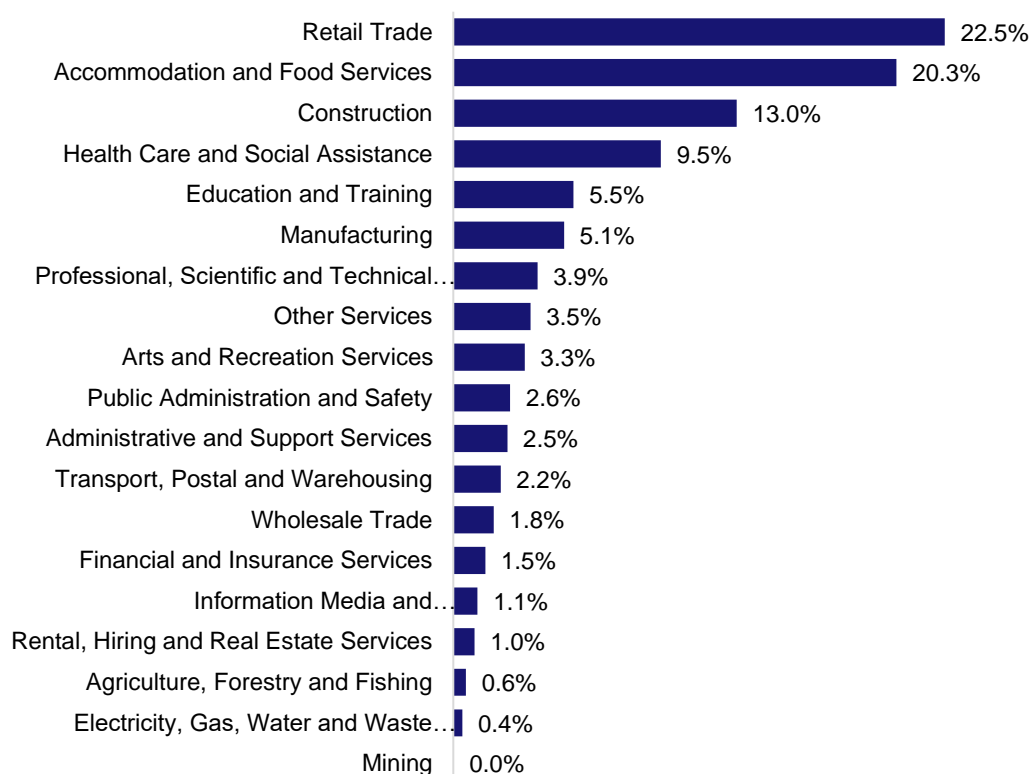
|                                 |        |
|---------------------------------|--------|
| Number employed (Feb-23):       | 53,600 |
| 1 year employment change:       | 5.8%   |
| 5 year employment change:       | 20.1%  |
| 10 year employment change:      | 33.1%  |
| Youth share of employment:      | 5.5%   |
| Mature age share of employment: | 10.8%  |

Source: ABS Labour Force Survey, Detailed, four quarter averages, February 2023, except youth and mature age data which are from the ABS Census of Population and Housing, 2021.

Note: In each chart, the solid line is the level of employment and the dotted line is a simple linear trend line for the 10 year period.

## Employment characteristics by Industry

### Which industries are youth (aged 15-24) employed in?



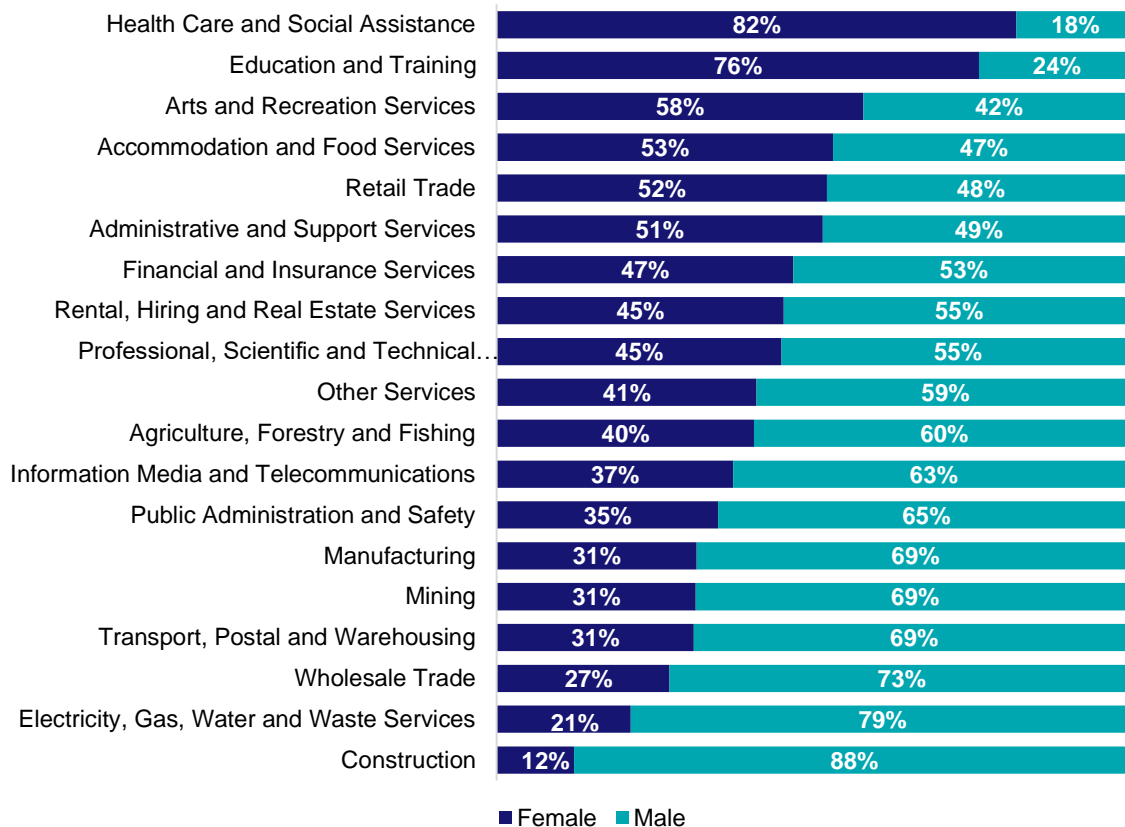
Source: ABS Census of Population and Housing, 2021.

### Which industries are mature age persons (aged 55+) employed in?



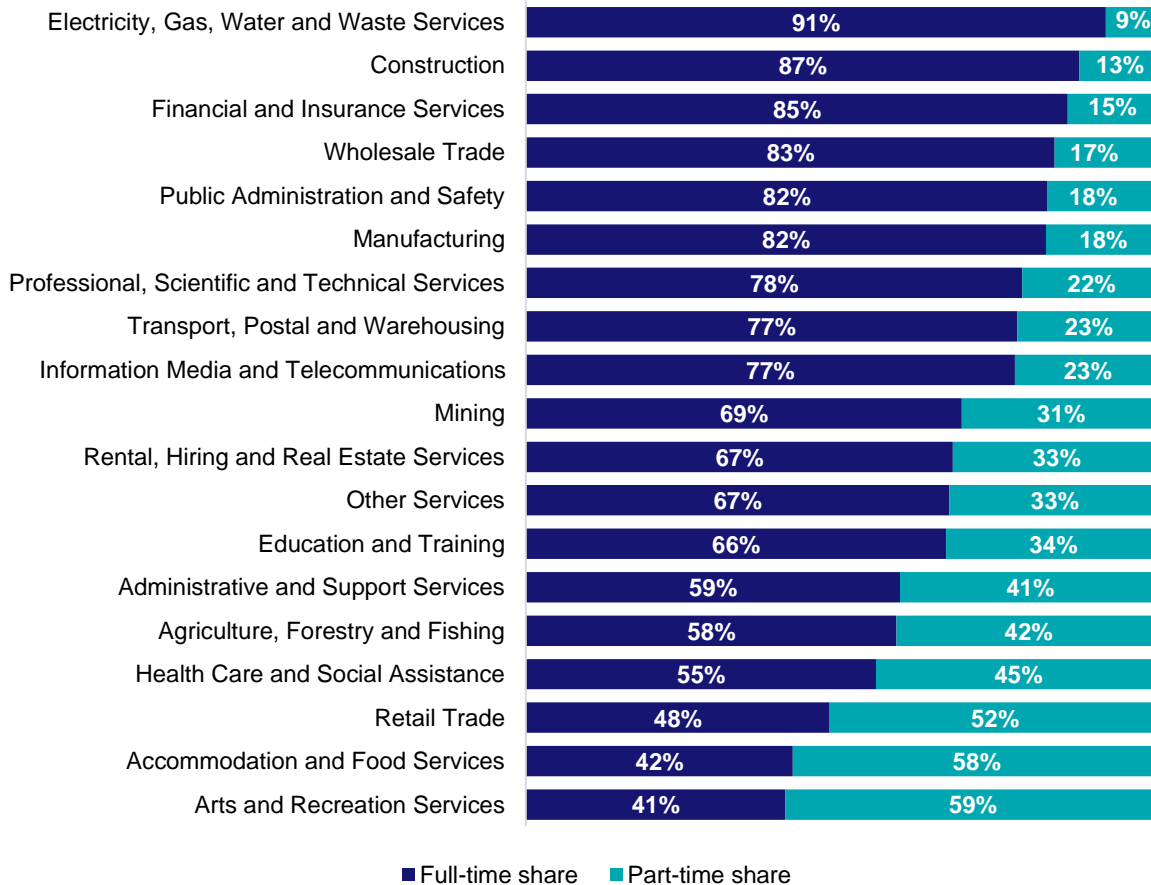
Source: ABS Census of Population and Housing, 2021. Note: SA2 level Census data have been aggregated to the Employment Region level.

## Gender share by industry



Source: ABS Labour Force Survey, Detailed, four quarter averages, February 2023.

## Full-time and part-time employment status by industry



Source: ABS Labour Force Survey, Detailed, four quarter averages, February 2023.

## Appendix

### Employment by industry, North Eastern Melbourne, February 2023

| Industry (in order of size)                     | Share of employment in the region Feb-23 (%) | Employed ('000) |              |              | 1 year change |            | 5 year change |            | Full-time share % | Part-time share % | Median age * |
|---|--|-----------------|--------------|--------------|---------------|------------|---------------|------------|-------------------|-------------------|--------------|
|   |  | Feb-23          | Feb-22       | Feb-18       | ('000)        | %          | ('000)        | %          |                   |                   |              |
| Health Care and Social Assistance               | 14.7   | 86.8            | 76.6         | 77.1         | 10.2          | 13.3       | 9.7           | 12.6       | 55.2              | 44.8              | 42           |
| Construction                                    | 11.2   | 65.9            | 63.9         | 65.6         | 2.1           | 3.2        | 0.3           | 0.5        | 87.3              | 12.7              | 38           |
| Retail Trade                                    | 10.0   | 58.9            | 58.2         | 69.2         | 0.7           | 1.2        | -10.2         | -14.8      | 47.9              | 52.1              | 34           |
| Professional, Scientific and Technical Services | 9.5  | 55.9            | 54.1         | 47.8         | 1.8           | 3.4        | 8.1           | 16.9       | 78.3              | 21.7              | 41           |
| Education and Training                          | 9.1  | 53.6            | 50.7         | 44.6         | 2.9           | 5.8        | 9.0           | 20.1       | 66.3              | 33.7              | 42           |
| Manufacturing                                   | 8.1  | 47.9            | 41.9         | 48.8         | 6.0           | 14.3       | -0.8          | -1.7       | 82.0              | 18.0              | 45           |
| Accommodation and Food Services                 | 5.8  | 34.3            | 30.1         | 30.7         | 4.2           | 14.0       | 3.6           | 11.9       | 42.1              | 57.9              | 24           |
| Public Administration and Safety                | 4.6  | 27.4            | 35.8         | 25.7         | -8.4          | -23.6      | 1.7           | 6.4        | 82.2              | 17.8              | 43           |
| Transport, Postal and Warehousing               | 4.4  | 25.9            | 26.1         | 25.3         | -0.2          | -0.6       | 0.6           | 2.4        | 77.5              | 22.5              | 44           |
| Financial and Insurance Services                | 4.2  | 24.8            | 26.1         | 19.0         | -1.3          | -4.9       | 5.8           | 30.5       | 85.5              | 14.5              | 40           |
| Other Services                                  | 3.6  | 21.1            | 20.1         | 27.7         | 1.1           | 5.3        | -6.6          | -23.7      | 66.8              | 33.2              | 41           |
| Wholesale Trade                                 | 3.5  | 20.5            | 20.3         | 19.1         | 0.2           | 0.9        | 1.4           | 7.2        | 83.4              | 16.6              | 45           |
| Administrative and Support Services             | 3.3  | 19.4            | 15.5         | 17.3         | 3.9           | 25.0       | 2.1           | 12.0       | 59.0              | 41.0              | 43           |
| Information Media and Telecommunications        | 2.4  | 14.2            | 8.8          | 10.1         | 5.4           | 61.1       | 4.1           | 40.5       | 77.1              | 22.9              | 40           |
| Arts and Recreation Services                    | 2.0  | 11.5            | 8.8          | 11.2         | 2.7           | 30.4       | 0.4           | 3.5        | 40.9              | 59.1              | 33           |
| Electricity, Gas, Water and Waste Services      | 1.4  | 8.3             | 6.6          | 6.2          | 1.8           | 26.8       | 2.1           | 34.1       | 91.4              | 8.6               | 42           |
| Rental, Hiring and Real Estate Services         | 1.4  | 8.2             | 8.1          | 7.2          | 0.1           | 1.7        | 1.0           | 13.8       | 67.3              | 32.7              | 40           |
| Agriculture, Forestry and Fishing               | 0.6  | 3.6             | 7.7          | 4.1          | -4.0          | -52.6      | -0.5          | -12.3      | 58.4              | 41.6              | 46           |
| Mining  | 0.2  | 1.0             | 1.6          | 1.6          | -0.6          | -38.8      | -0.6          | -37.1      | 68.7              | 31.3              | 47           |
| <b>All industries</b>                           | <b>100.0</b>                                 | <b>589.5</b>    | <b>561.0</b> | <b>558.4</b> | <b>28.5</b>   | <b>5.1</b> | <b>31.1</b>   | <b>5.6</b> | <b>68.7</b>       | <b>31.3</b>       | <b>40</b>    |

Source: ABS Labour Force Survey, Detailed, four quarter averages, February 2023. \*Median age is from the ABS Census of Population and Housing, 2021. Median age has been derived using aggregated SA2s for the Employment Region.

Note: Small cells should be viewed with caution due to small sample sizes and regional volatility.