



# Employment Region Industry profile

## North Coast Employment Region

Release date: 28 April 2023

### Overview

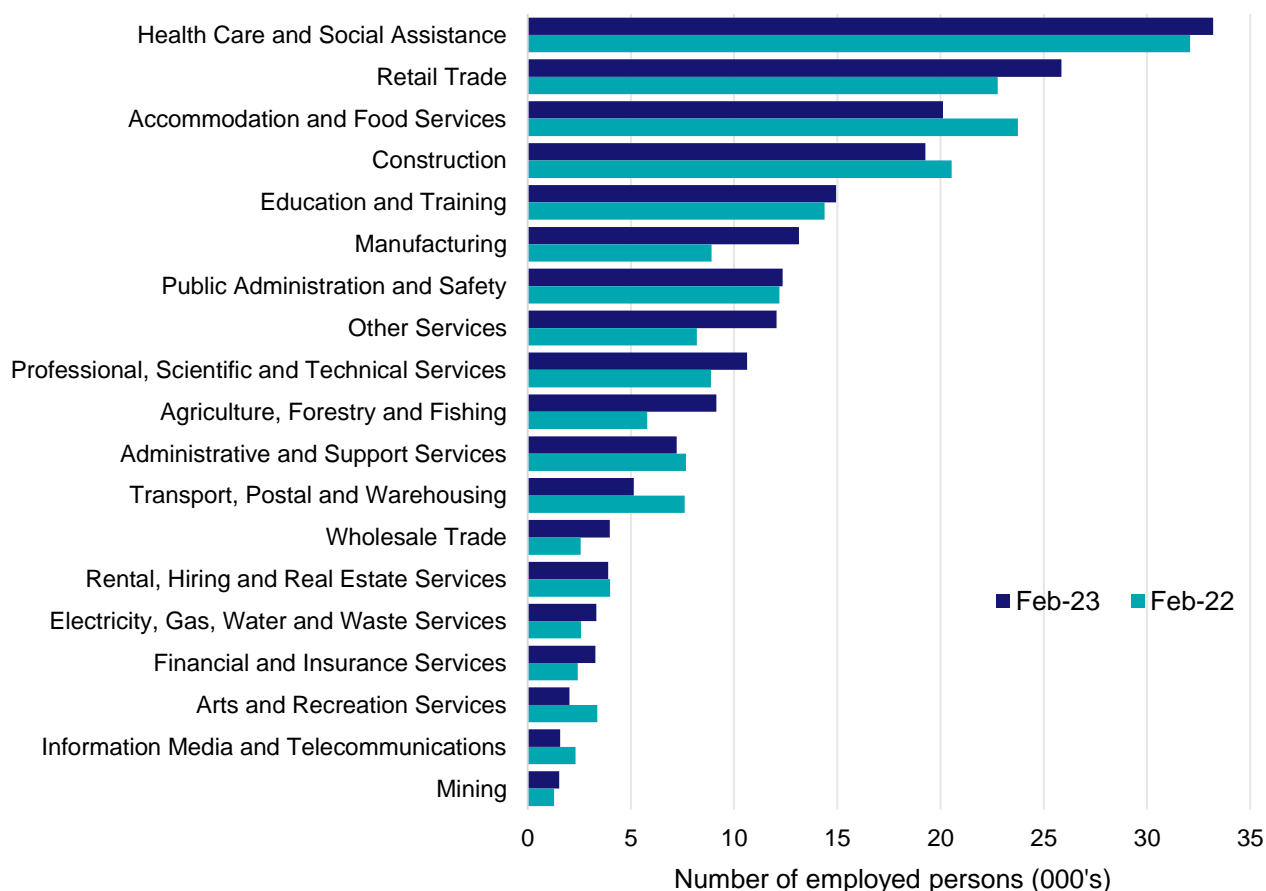
In February 2023, there were around 202,700 people employed in the North Coast Employment Region. The 5 largest employing industries in the region were Health Care and Social Assistance, Retail Trade, Accommodation and Food Services, Construction, and Education and Training. Together these 5 industries accounted for 56% of employment in the region.

Over the year to February 2023, employment in:

- Health Care and Social Assistance rose by 3.5% to stand at 33,200
- Retail Trade rose by 13.6% to stand at 25,900
- Accommodation and Food Services fell by 15.3% to stand at 20,100.

In Health Care and Social Assistance in the North Coast Employment Region, 53% of workers were employed part-time; 73% were female; and the median age of the workforce was 48.

### Employment by industry, February 2023 and February 2022



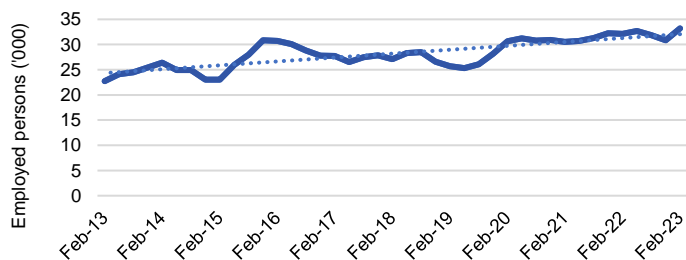
Source: ABS Labour Force Survey\*, Detailed, four quarter averages, February 2023. Note that total employment for the region (four quarter averaged data) may not match data published in the Employment Region Labour Market dashboards (6 month averaged data).

\*ABS Labour Force Survey data are based on the combined SA4s of Richmond - Tweed; and Coffs Harbour - Grafton.

Notes: Data are the latest available. Estimates should be treated with caution, as data can be volatile at a regional level. For any enquiries related to the data in this report, please contact [RegionalWorkforceAssessment@jobsandskills.gov.au](mailto:RegionalWorkforceAssessment@jobsandskills.gov.au)

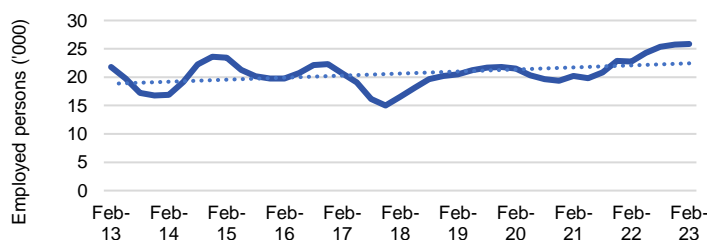
# Five largest employing industries: key statistics

## Health Care and Social Assistance



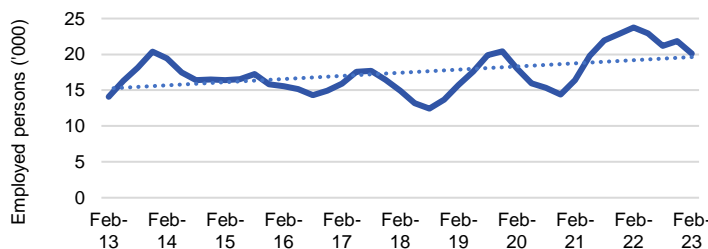
Number employed (Feb-23):	33,200
1 year employment change:	3.5%
5 year employment change:	22.5%
10 year employment change:	46.0%
Youth share of employment:	8.8%
Mature age share of employment:	21.2%

## Retail Trade



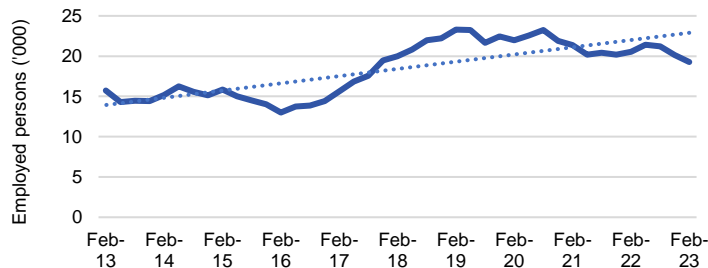
Number employed (Feb-23):	25,900
1 year employment change:	13.6%
5 year employment change:	56.5%
10 year employment change:	18.6%
Youth share of employment:	23.1%
Mature age share of employment:	8.0%

## Accommodation and Food Services



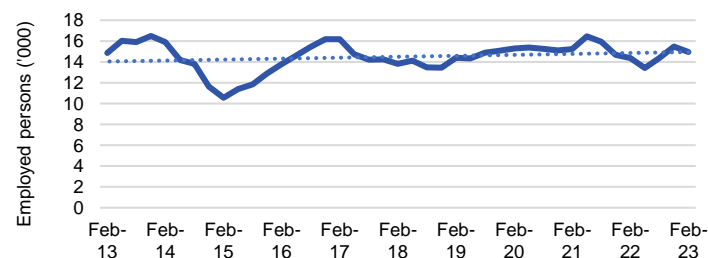
Number employed (Feb-23):	20,100
1 year employment change:	-15.3%
5 year employment change:	34.6%
10 year employment change:	42.8%
Youth share of employment:	25.3%
Mature age share of employment:	5.0%

## Construction



Number employed (Feb-23):	19,300
1 year employment change:	-6.2%
5 year employment change:	-3.7%
10 year employment change:	22.6%
Youth share of employment:	9.9%
Mature age share of employment:	8.0%

## Education and Training



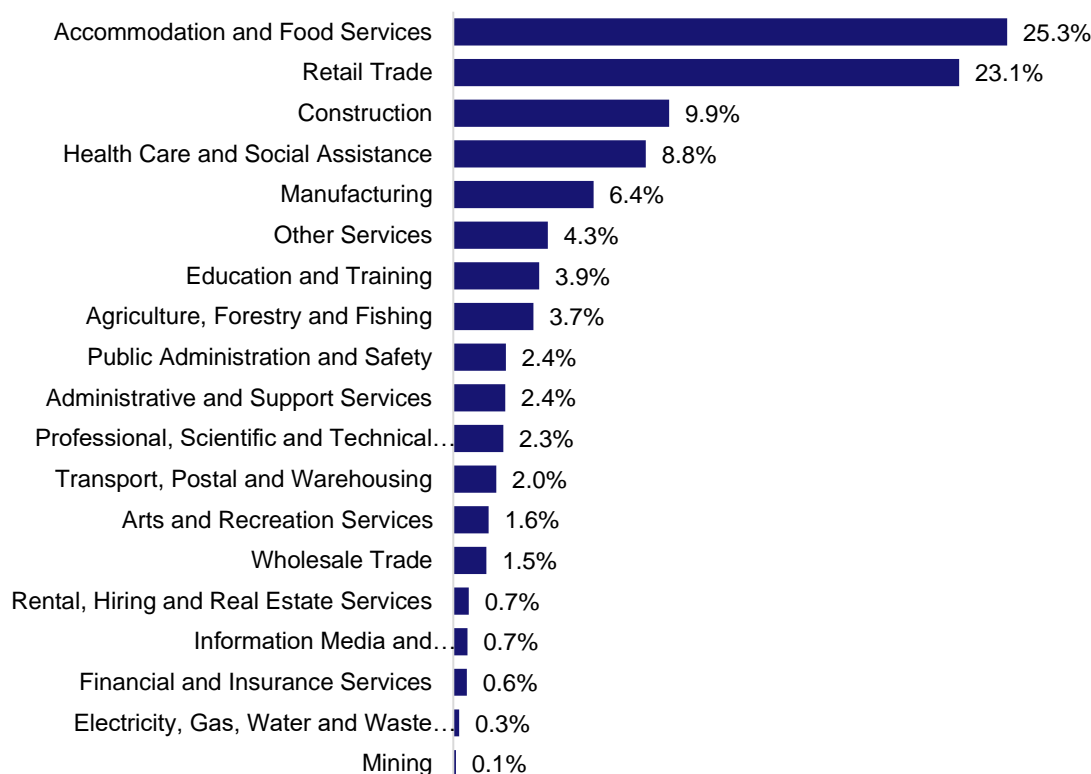
Number employed (Feb-23):	14,900
1 year employment change:	3.9%
5 year employment change:	8.3%
10 year employment change:	0.6%
Youth share of employment:	3.9%
Mature age share of employment:	10.5%

Source: ABS Labour Force Survey, Detailed, four quarter averages, February 2023, except youth and mature age data which are from the ABS Census of Population and Housing, 2021.

Note: In each chart, the solid line is the level of employment and the dotted line is a simple linear trend line for the 10 year period.

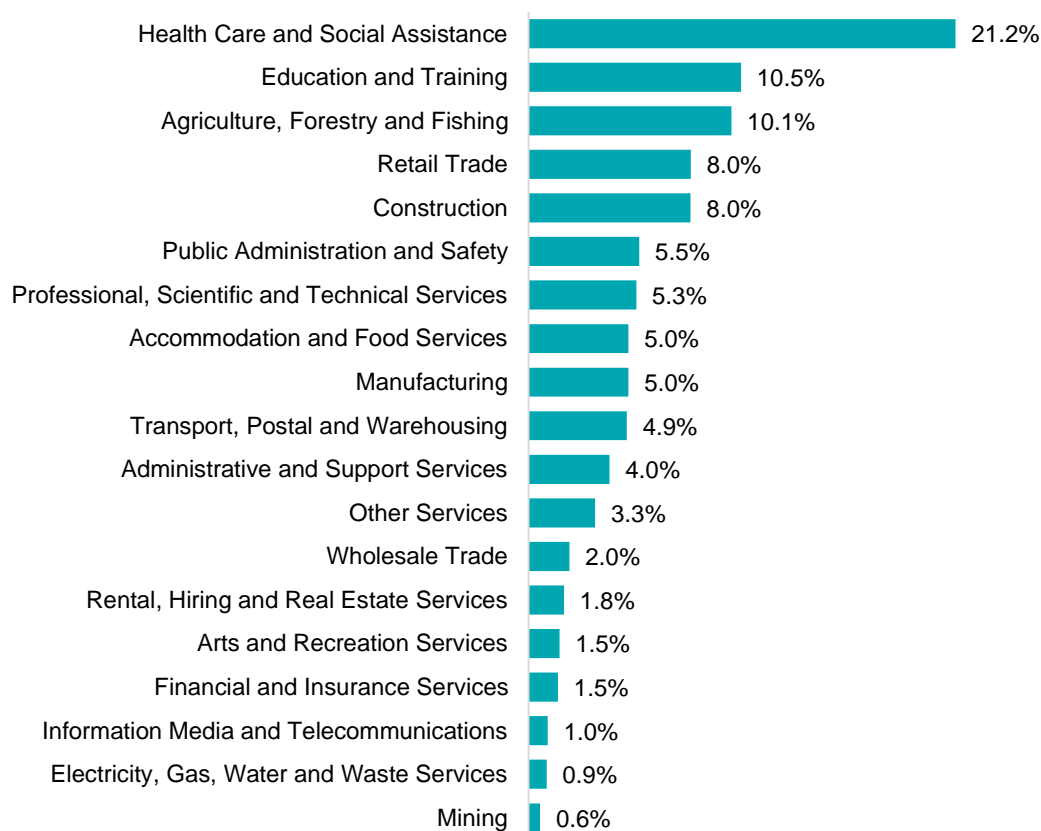
## Employment characteristics by Industry

### Which industries are youth (aged 15-24) employed in?



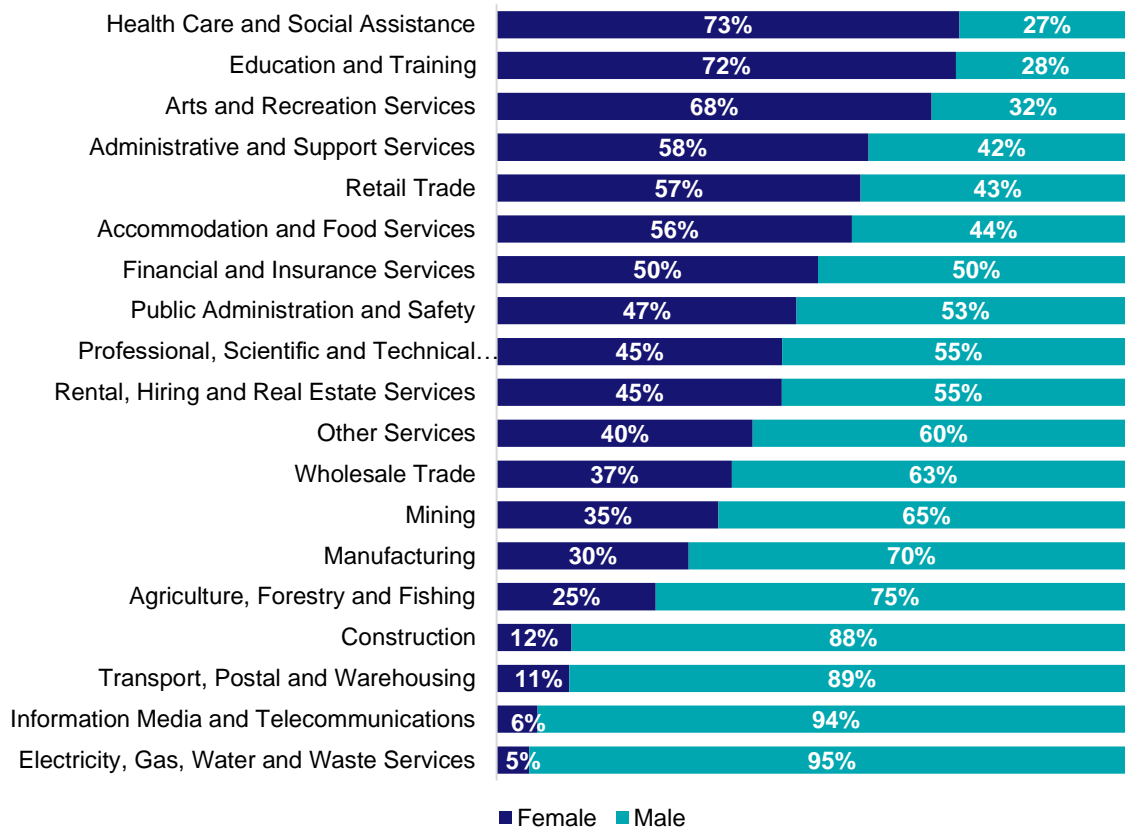
Source: ABS Census of Population and Housing, 2021.

### Which industries are mature age persons (aged 55+) employed in?



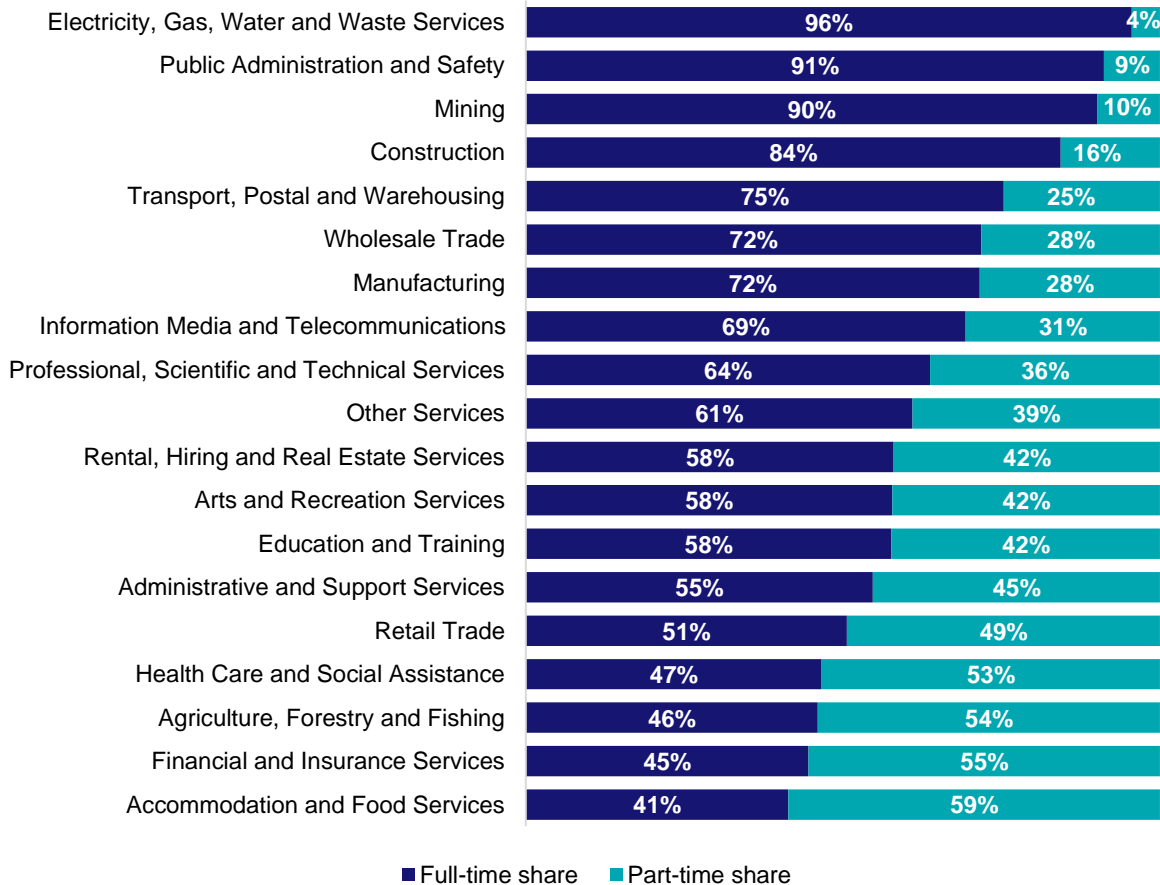
Source: ABS Census of Population and Housing, 2021. Note: SA2 level Census data have been aggregated to the Employment Region level.

## Gender share by industry



Source: ABS Labour Force Survey, Detailed, four quarter averages, February 2023.

## Full-time and part-time employment status by industry



Source: ABS Labour Force Survey, Detailed, four quarter averages, February 2023.

## Appendix

### Employment by industry, North Coast, February 2023

Industry (in order of size)	Share of employment in the region Feb-23 (%)	Employed ('000)			1 year change		5 year change		Full-time share %	Part-time share %	Median age *
		Feb-23	Feb-22	Feb-18	('000)	%	('000)	%			
Health Care and Social Assistance	16.4	33.2	32.1	27.1	1.1	3.5	6.1	22.5	46.6	53.4	48
Retail Trade	12.8	25.9	22.8	16.5	3.1	13.6	9.3	56.5	50.6	49.4	37
Accommodation and Food Services	9.9	20.1	23.7	14.9	-3.6	-15.3	5.2	34.6	41.4	58.6	31
Construction	9.5	19.3	20.5	20.0	-1.3	-6.2	-0.7	-3.7	84.3	15.7	41
Education and Training	7.4	14.9	14.4	13.8	0.6	3.9	1.1	8.3	57.6	42.4	47
Manufacturing	6.5	13.1	8.9	11.0	4.2	47.5	2.1	19.2	71.6	28.4	43
Public Administration and Safety	6.1	12.3	12.2	8.7	0.2	1.3	3.6	41.1	91.2	8.8	47
Other Services	5.9	12.1	8.2	5.9	3.9	47.1	6.1	103.3	61.0	39.0	42
Professional, Scientific and Technical Services	5.2	10.6	8.9	13.4	1.8	19.8	-2.8	-20.9	63.7	36.3	45
Agriculture, Forestry and Fishing	4.5	9.1	5.8	8.4	3.4	57.9	0.8	9.4	46.0	54.0	54
Administrative and Support Services	3.6	7.2	7.7	6.3	-0.5	-5.9	0.9	14.3	54.7	45.3	46
Transport, Postal and Warehousing	2.5	5.1	7.6	5.3	-2.5	-32.4	-0.1	-2.6	75.4	24.6	52
Wholesale Trade	2.0	4.0	2.6	5.7	1.4	55.6	-1.7	-30.0	71.8	28.2	47
Rental, Hiring and Real Estate Services	1.9	3.9	4.0	3.8	-0.1	-2.4	0.1	1.7	58.0	42.0	47
Electricity, Gas, Water and Waste Services	1.6	3.3	2.6	1.6	0.8	29.3	1.7	106.9	95.5	4.5	47
Financial and Insurance Services	1.6	3.3	2.4	2.3	0.8	34.8	0.9	40.5	44.6	55.4	46
Arts and Recreation Services	1.0	2.0	3.4	4.9	-1.4	-40.1	-2.9	-58.6	57.8	42.2	43
Information Media and Telecommunications	0.8	1.6	2.3	1.0	-0.7	-31.8	0.6	59.9	69.3	30.7	45
Mining	0.8	1.5	1.3	1.7	0.2	18.7	-0.2	-10.5	90.1	9.9	41
<b>All industries</b>	<b>100.0</b>	<b>202.7</b>	<b>191.3</b>	<b>172.5</b>	<b>11.4</b>	<b>6.0</b>	<b>30.2</b>	<b>17.5</b>	<b>60.2</b>	<b>39.8</b>	<b>44</b>

Source: ABS Labour Force Survey, Detailed, four quarter averages, February 2023. \*Median age is from the ABS Census of Population and Housing, 2021. Median age has been derived using aggregated SA2s for the Employment Region.

Note: Small cells should be viewed with caution due to small sample sizes and regional volatility.