



Employment Region Industry profile

Murray Riverina Employment Region

Release date: 28 April 2023

Overview

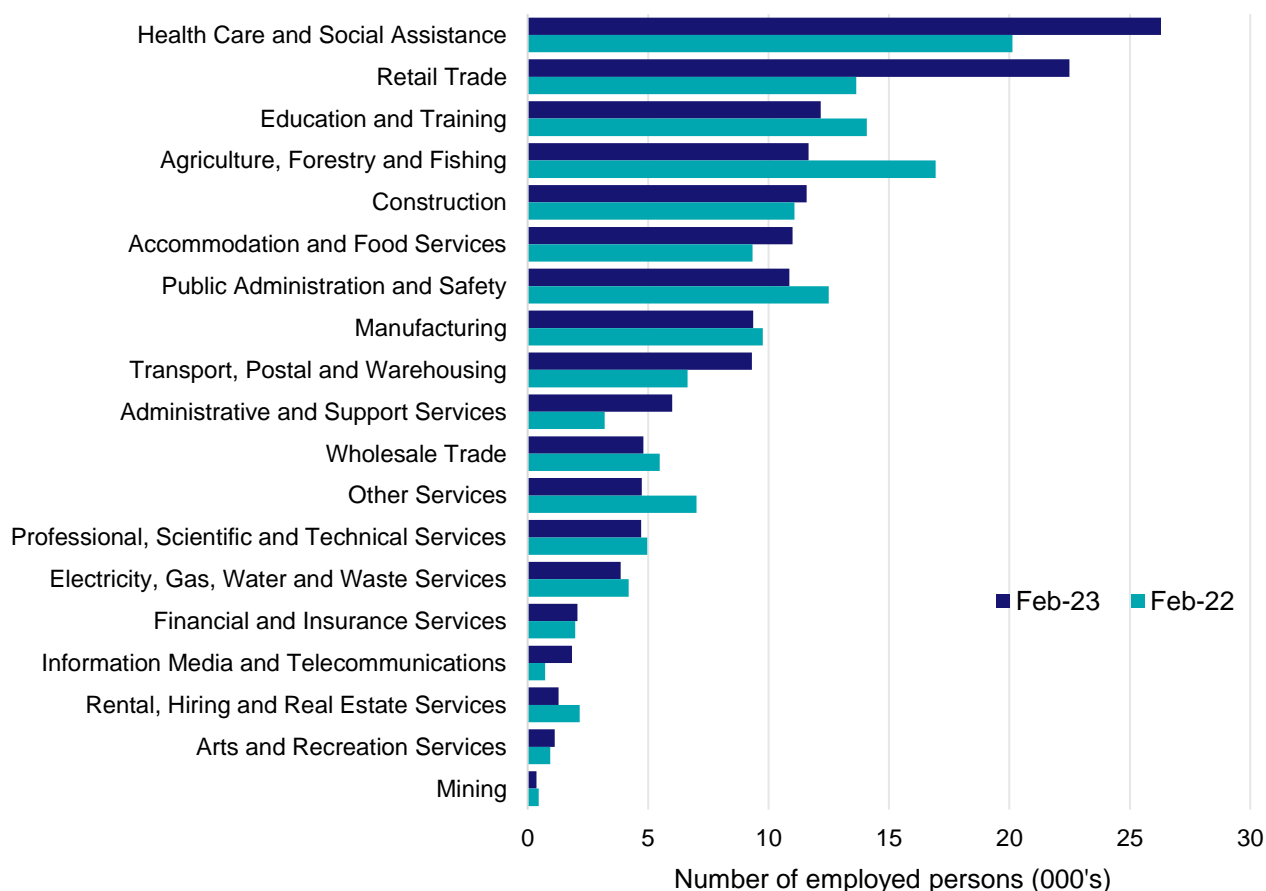
In February 2023, there were around 155,500 people employed in the Murray Riverina Employment Region. The 5 largest employing industries in the region were Health Care and Social Assistance, Retail Trade, Education and Training, Agriculture, Forestry and Fishing, and Construction. Together these 5 industries accounted for 54% of employment in the region.

Over the year to February 2023, employment in:

- Health Care and Social Assistance rose by 30.7% to stand at 26,300
- Retail Trade rose by 64.8% to stand at 22,500
- Education and Training fell by 13.6% to stand at 12,200.

In Health Care and Social Assistance in the Murray Riverina Employment Region, 64% of workers were employed full-time; 73% were female; and the median age of the workforce was 43.

Employment by industry, February 2023 and February 2022



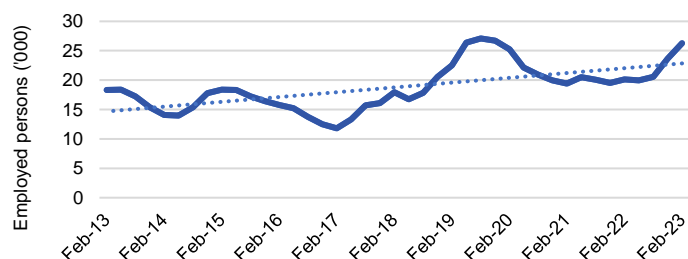
Source: ABS Labour Force Survey*, Detailed, four quarter averages, February 2023. Note that total employment for the region (four quarter averaged data) may not match data published in the Employment Region Labour Market dashboards (6 month averaged data).

*ABS Labour Force Survey data are based on the combined SA4s of Murray and Riverina.

Notes: Data are the latest available. Estimates should be treated with caution, as data can be volatile at a regional level. For any enquiries related to the data in this report, please contact RegionalWorkforceAssessment@jobsandskills.gov.au

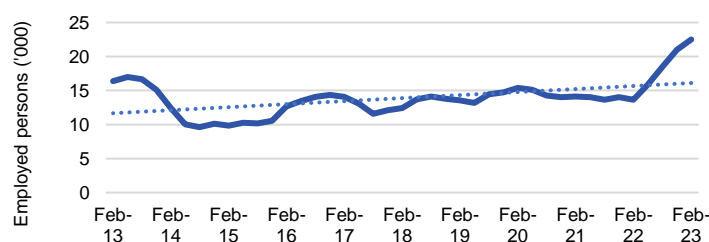
Five largest employing industries: key statistics

Health Care and Social Assistance



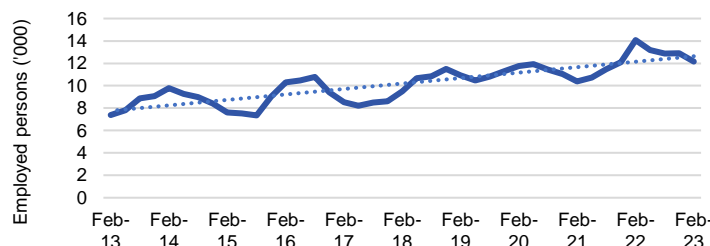
Number employed (Feb-23):	26,300
1 year employment change:	30.7%
5 year employment change:	46.5%
10 year employment change:	43.5%
Youth share of employment:	9.0%
Mature age share of employment:	14.0%

Retail Trade



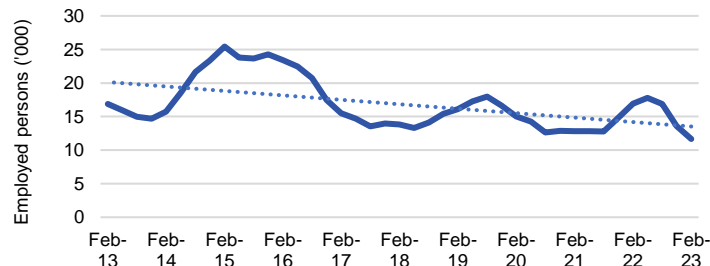
Number employed (Feb-23):	22,500
1 year employment change:	64.8%
5 year employment change:	81.3%
10 year employment change:	37.5%
Youth share of employment:	18.3%
Mature age share of employment:	7.2%

Education and Training



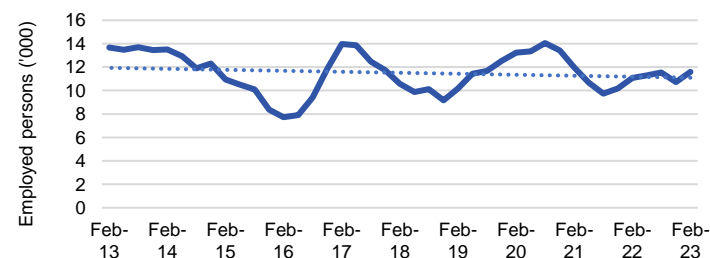
Number employed (Feb-23):	12,200
1 year employment change:	-13.6%
5 year employment change:	28.0%
10 year employment change:	65.0%
Youth share of employment:	4.7%
Mature age share of employment:	9.3%

Agriculture, Forestry and Fishing



Number employed (Feb-23):	11,700
1 year employment change:	-31.2%
5 year employment change:	-15.7%
10 year employment change:	-30.9%
Youth share of employment:	8.1%
Mature age share of employment:	21.3%

Construction



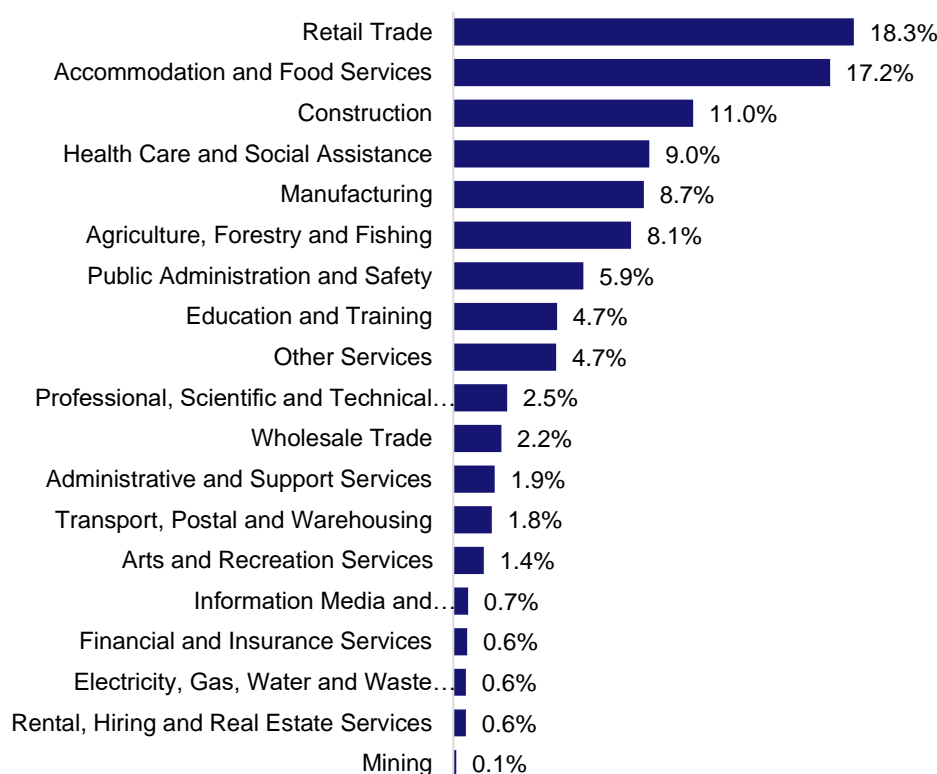
Number employed (Feb-23):	11,600
1 year employment change:	4.6%
5 year employment change:	9.5%
10 year employment change:	-15.3%
Youth share of employment:	11.0%
Mature age share of employment:	6.3%

Source: ABS Labour Force Survey, Detailed, four quarter averages, February 2023, except youth and mature age data which are from the ABS Census of Population and Housing, 2021.

Note: In each chart, the solid line is the level of employment and the dotted line is a simple linear trend line for the 10 year period.

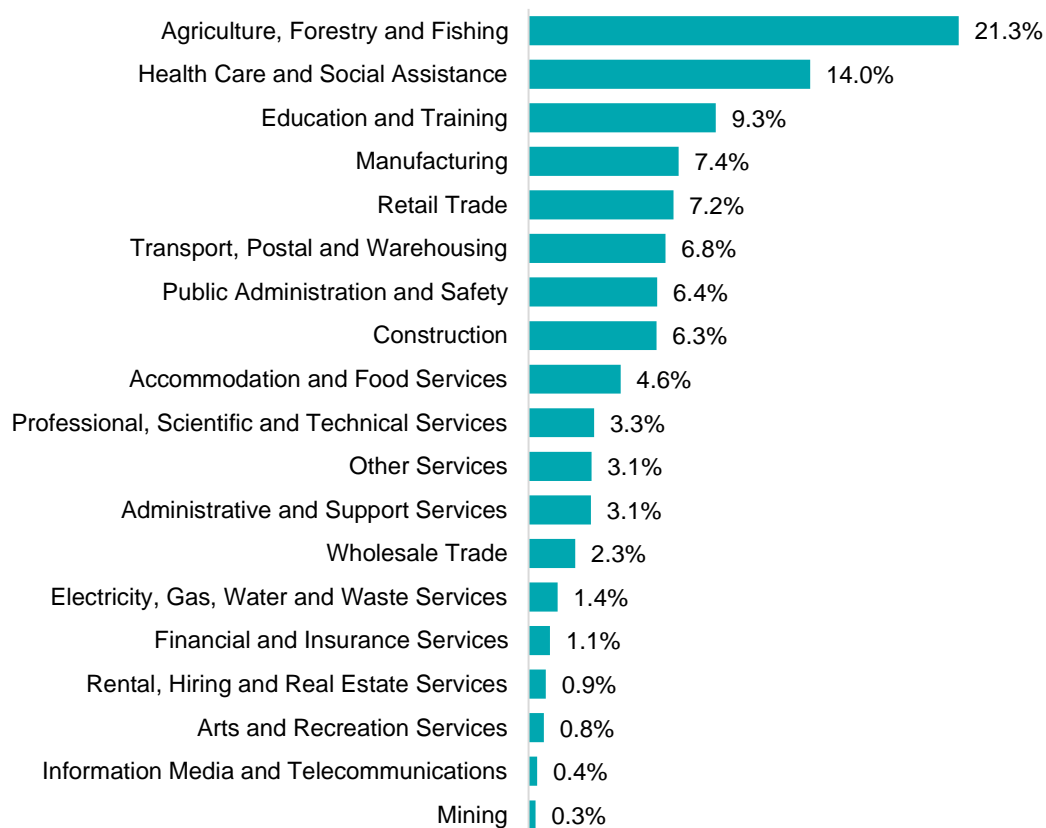
Employment characteristics by Industry

Which industries are youth (aged 15-24) employed in?



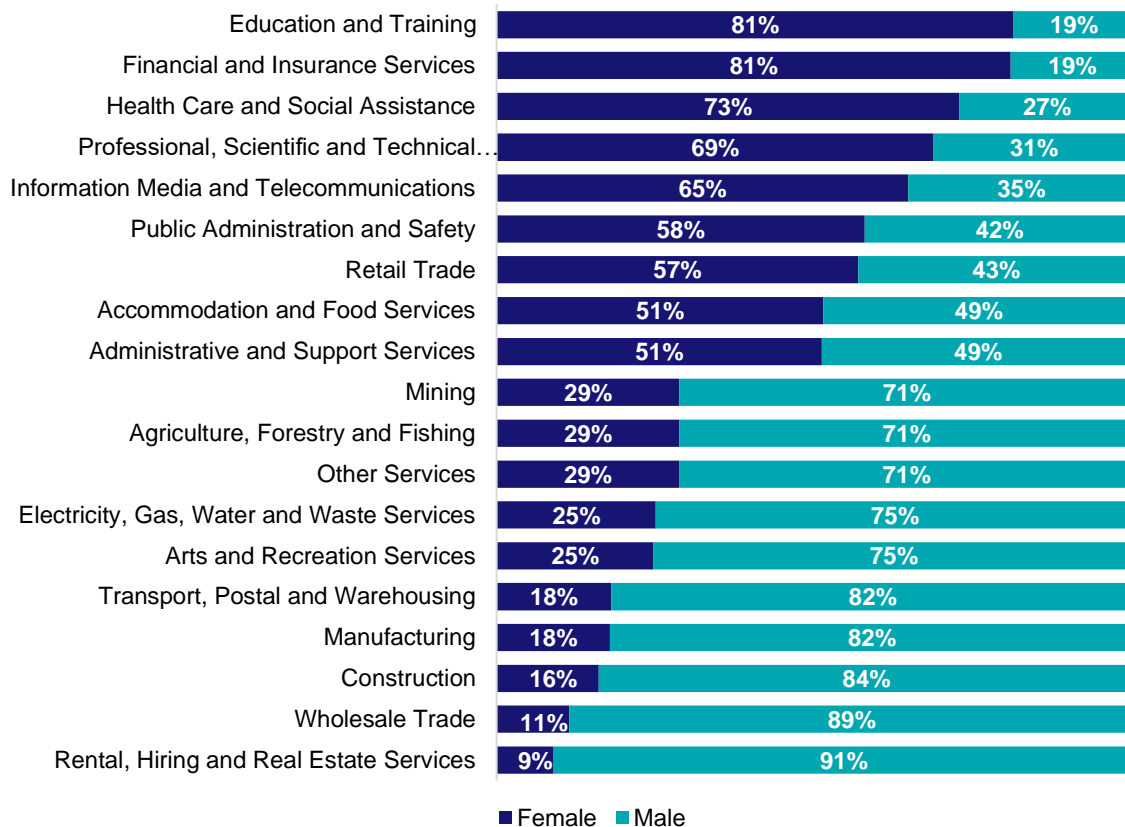
Source: ABS Census of Population and Housing, 2021.

Which industries are mature age persons (aged 55+) employed in?



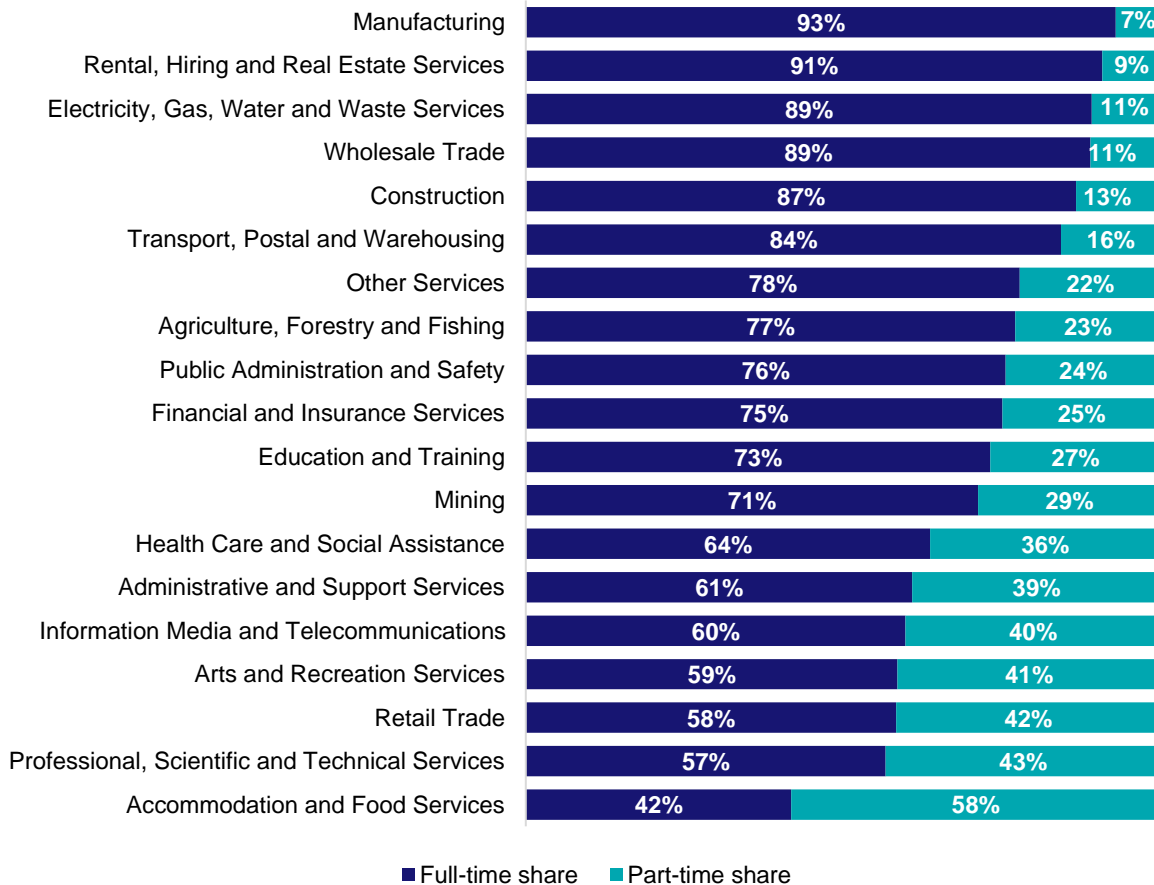
Source: ABS Census of Population and Housing, 2021. Note: SA2 level Census data have been aggregated to the Employment Region level.

Gender share by industry



Source: ABS Labour Force Survey, Detailed, four quarter averages, February 2023.

Full-time and part-time employment status by industry



Source: ABS Labour Force Survey, Detailed, four quarter averages, February 2023.

Appendix

Employment by industry, Murray Riverina, February 2023

Industry (in order of size)	Share of employment in the region Feb-23 (%)	Employed ('000)			1 year change		5 year change		Full-time share %	Part-time share %	Median age *
		Feb-23	Feb-22	Feb-18	('000)	%	('000)	%			
Health Care and Social Assistance	16.9	26.3	20.1	17.9	6.2	30.7	8.3	46.5	63.7	36.3	43
Retail Trade	14.5	22.5	13.6	12.4	8.8	64.8	10.1	81.3	58.4	41.6	36
Education and Training	7.8	12.2	14.1	9.5	-1.9	-13.6	2.7	28.0	73.2	26.8	45
Agriculture, Forestry and Fishing	7.5	11.7	16.9	13.8	-5.3	-31.2	-2.2	-15.7	77.2	22.8	50
Construction	7.5	11.6	11.1	10.6	0.5	4.6	1.0	9.5	86.7	13.3	37
Accommodation and Food Services	7.1	11.0	9.3	10.7	1.7	17.8	0.3	2.3	41.8	58.2	29
Public Administration and Safety	7.0	10.9	12.5	6.0	-1.6	-13.2	4.9	81.1	75.7	24.3	42
Manufacturing	6.0	9.4	9.8	15.0	-0.4	-4.1	-5.7	-37.7	93.0	7.0	40
Transport, Postal and Warehousing	6.0	9.3	6.6	5.7	2.7	40.2	3.6	62.6	84.4	15.6	53
Administrative and Support Services	3.9	6.0	3.2	3.4	2.8	87.8	2.6	75.1	60.9	39.1	45
Wholesale Trade	3.1	4.8	5.5	3.8	-0.7	-12.5	1.0	25.4	89.0	11.0	44
Other Services	3.0	4.7	7.0	5.3	-2.3	-32.3	-0.5	-9.7	77.9	22.1	38
Professional, Scientific and Technical Services	3.0	4.7	5.0	3.9	-0.2	-5.0	0.8	19.6	56.7	43.3	41
Electricity, Gas, Water and Waste Services	2.5	3.9	4.2	1.3	-0.3	-8.2	2.6	204.9	89.2	10.8	45
Financial and Insurance Services	1.3	2.1	2.0	2.1	0.1	5.0	0.0	-1.3	75.2	24.8	42
Information Media and Telecommunications	1.2	1.8	0.7	0.1	1.1	154.0	1.7	1376.2	59.9	40.1	36
Rental, Hiring and Real Estate Services	0.8	1.3	2.2	1.1	-0.9	-40.4	0.2	17.8	90.9	9.1	45
Arts and Recreation Services	0.7	1.1	0.9	2.1	0.2	19.4	-1.0	-47.4	58.6	41.4	36
Mining	0.2	0.4	0.5	0.1	-0.1	-20.6	0.2	182.6	71.3	28.7	42
All industries	100.0	155.5	145.2	125.0	10.3	7.1	30.5	24.4	70.5	29.5	42

Source: ABS Labour Force Survey, Detailed, four quarter averages, February 2023. *Median age is from the ABS Census of Population and Housing, 2021. Median age has been derived using aggregated SA2s for the Employment Region.

Note: Small cells should be viewed with caution due to small sample sizes and regional volatility.