



Employment Region Industry profile

Murray and South East Employment Region

Release date: 28 April 2023

Overview

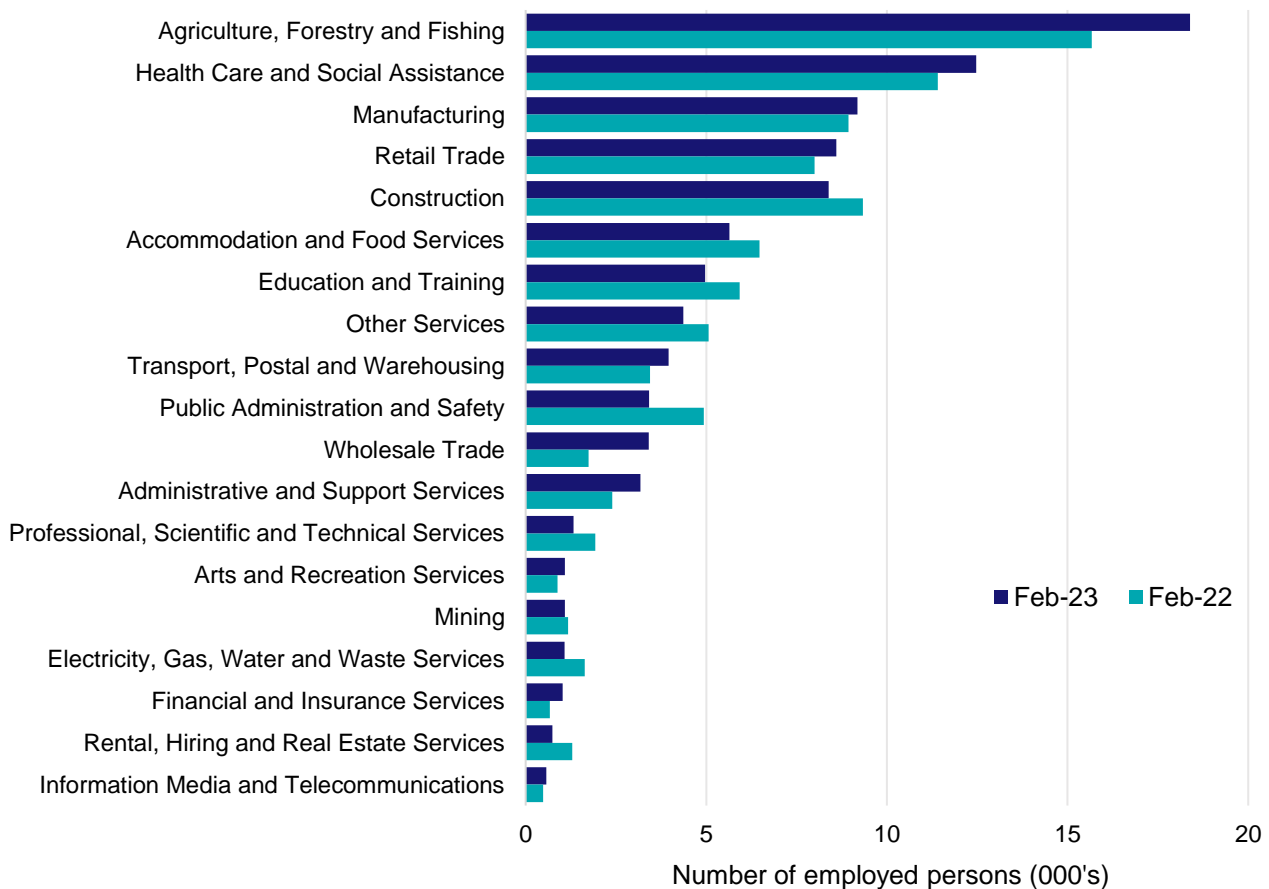
In February 2023, there were around 92,800 people employed in the Murray and South East Employment Region. The 5 largest employing industries in the region were Agriculture, Forestry and Fishing, Health Care and Social Assistance, Manufacturing, Retail Trade, and Construction. Together these 5 industries accounted for 61% of employment in the region.

Over the year to February 2023, employment in:

- Agriculture, Forestry and Fishing rose by 17.3% to stand at 18,400
- Health Care and Social Assistance rose by 9.3% to stand at 12,500
- Manufacturing rose by 2.8% to stand at 9,200.

In Agriculture, Forestry and Fishing in the Murray and South East Employment Region, 69% of workers were employed full-time; 66% were male; and the median age of the workforce was 48.

Employment by industry, February 2023 and February 2022



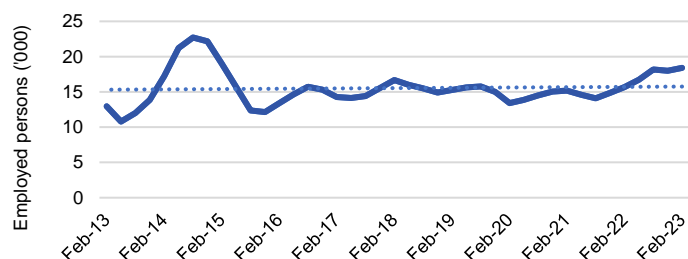
Source: ABS Labour Force Survey*, Detailed, four quarter averages, February 2023. Note that total employment for the region (four quarter averaged data) may not match data published in the Employment Region Labour Market dashboards (6 month averaged data).

*ABS Labour Force Survey data are based on the South Australia - South East SA4.

Notes: Data are the latest available. Estimates should be treated with caution, as data can be volatile at a regional level. For any enquiries related to the data in this report, please contact RegionalWorkforceAssessment@jobsandskills.gov.au

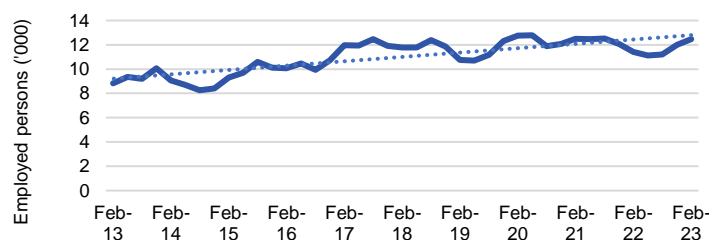
Five largest employing industries: key statistics

Agriculture, Forestry and Fishing



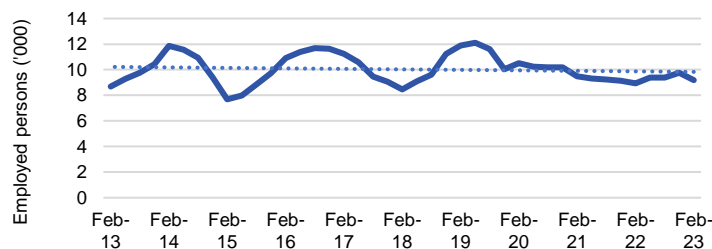
Number employed (Feb-23):	18,400
1 year employment change:	17.3%
5 year employment change:	10.2%
10 year employment change:	41.8%
Youth share of employment:	12.6%
Mature age share of employment:	25.3%

Health Care and Social Assistance



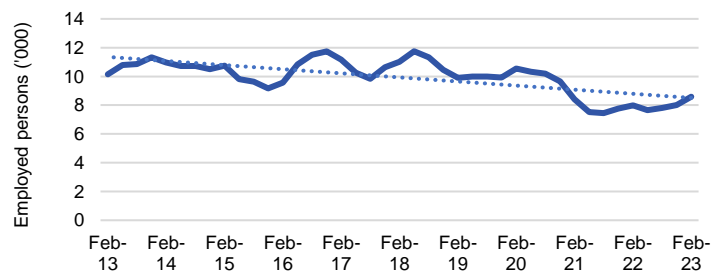
Number employed (Feb-23):	12,500
1 year employment change:	9.3%
5 year employment change:	5.8%
10 year employment change:	41.4%
Youth share of employment:	8.6%
Mature age share of employment:	14.2%

Manufacturing



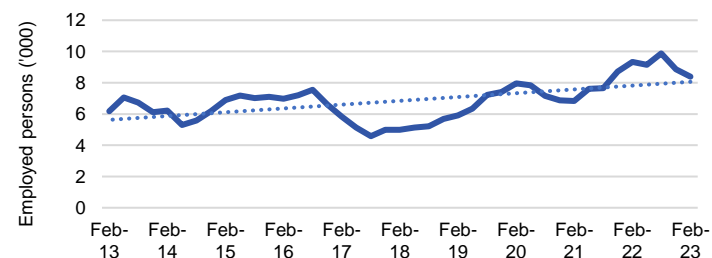
Number employed (Feb-23):	9,200
1 year employment change:	2.8%
5 year employment change:	8.4%
10 year employment change:	5.7%
Youth share of employment:	9.6%
Mature age share of employment:	8.9%

Retail Trade



Number employed (Feb-23):	8,600
1 year employment change:	7.5%
5 year employment change:	-21.9%
10 year employment change:	-15.3%
Youth share of employment:	19.8%
Mature age share of employment:	7.7%

Construction



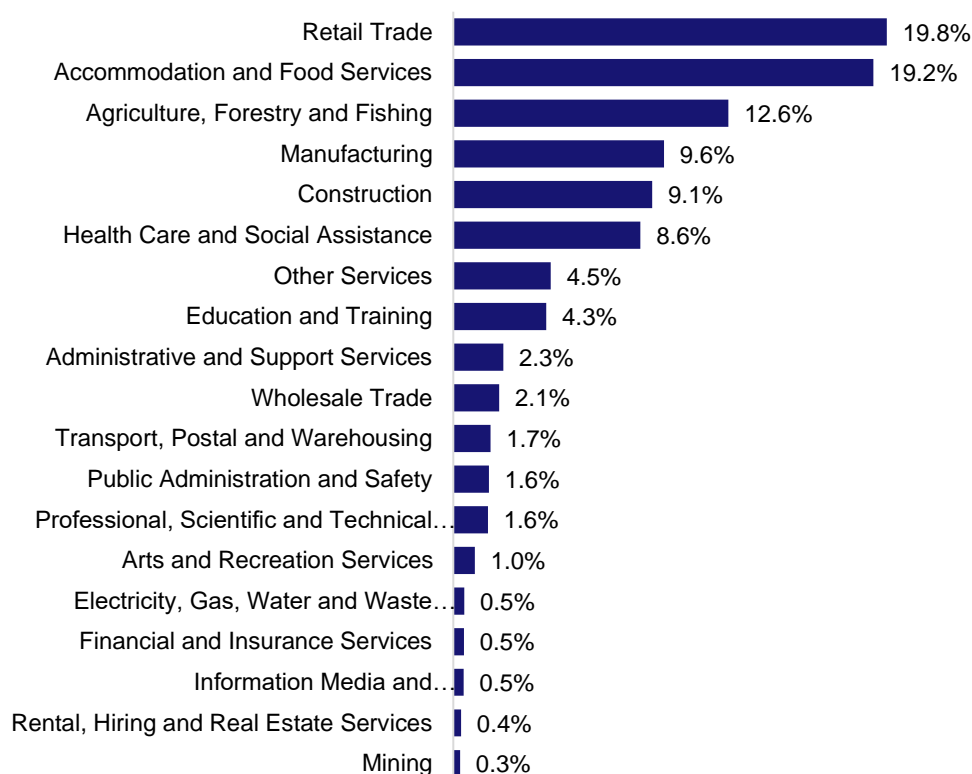
Number employed (Feb-23):	8,400
1 year employment change:	-10.2%
5 year employment change:	68.1%
10 year employment change:	35.8%
Youth share of employment:	9.1%
Mature age share of employment:	6.6%

Source: ABS Labour Force Survey, Detailed, four quarter averages, February 2023, except youth and mature age data which are from the ABS Census of Population and Housing, 2021.

Note: In each chart, the solid line is the level of employment and the dotted line is a simple linear trend line for the 10 year period.

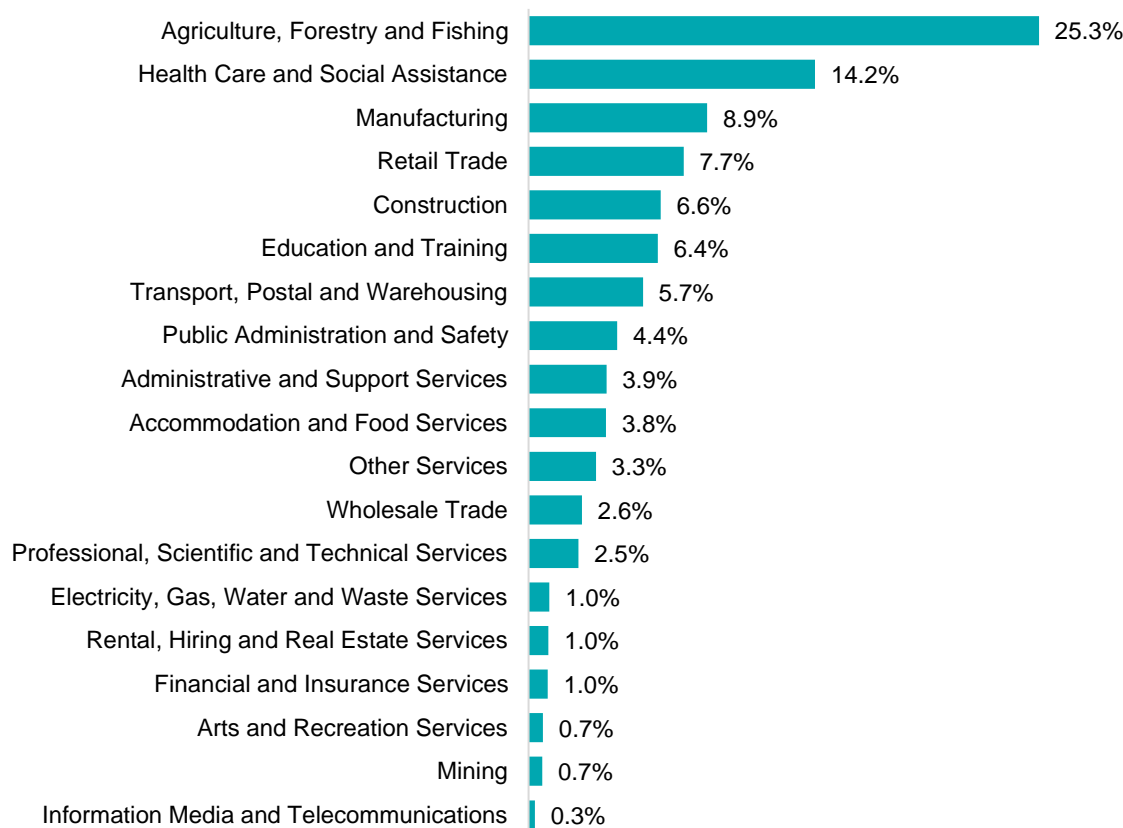
Employment characteristics by Industry

Which industries are youth (aged 15-24) employed in?



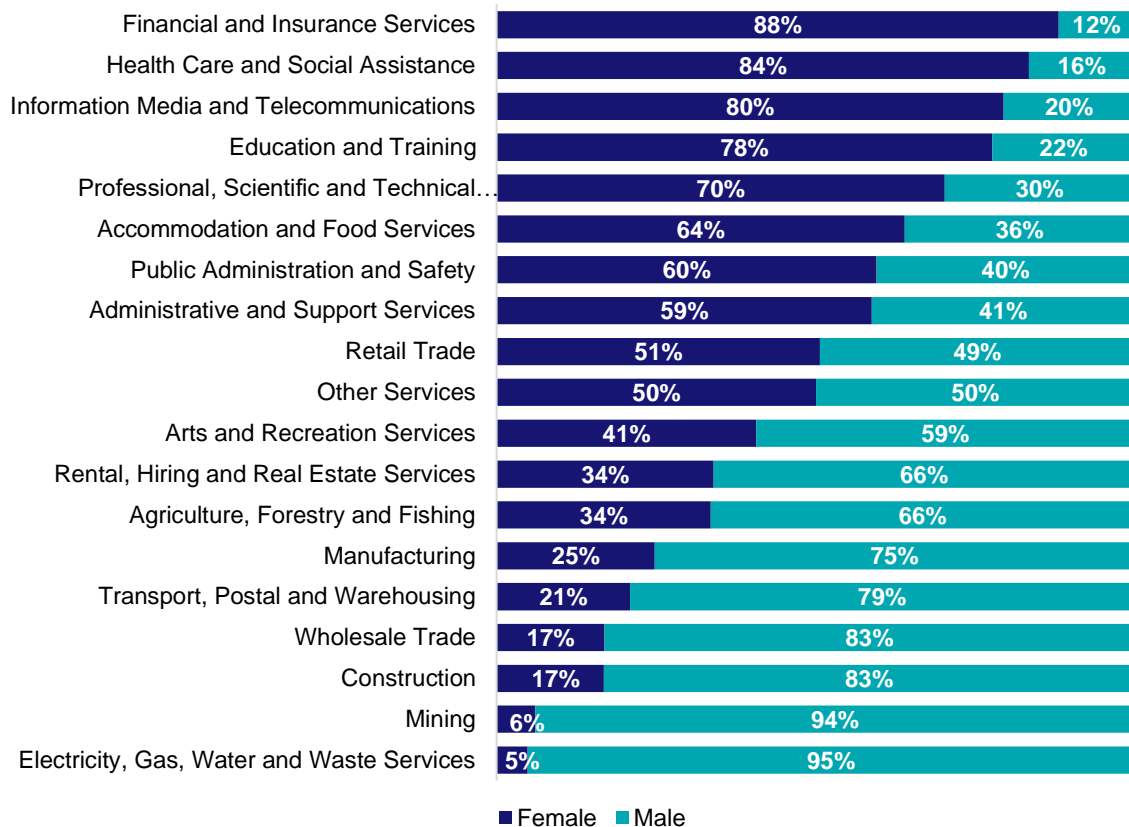
Source: ABS Census of Population and Housing, 2021.

Which industries are mature age persons (aged 55+) employed in?



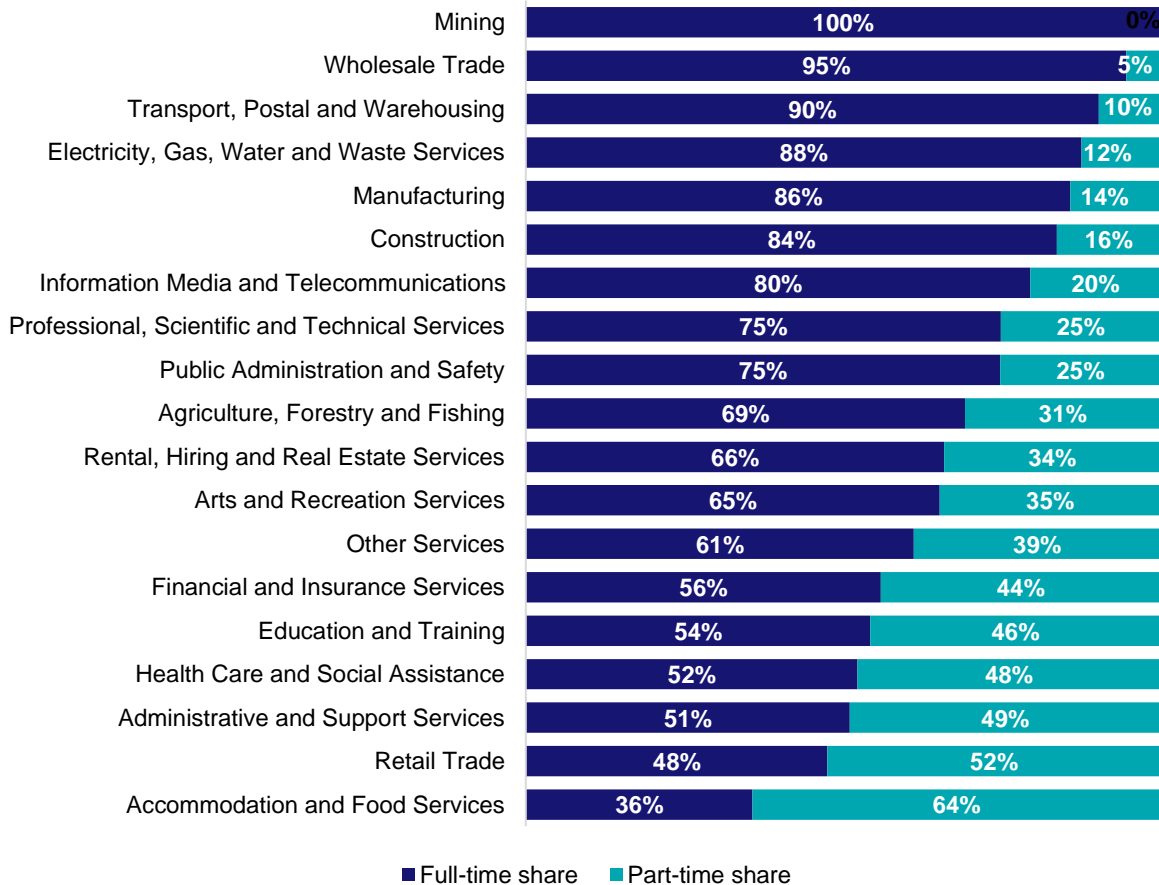
Source: ABS Census of Population and Housing, 2021. Note: SA2 level Census data have been aggregated to the Employment Region level.

Gender share by industry



Source: ABS Labour Force Survey, Detailed, four quarter averages, February 2023.

Full-time and part-time employment status by industry



Source: ABS Labour Force Survey, Detailed, four quarter averages, February 2023.

Appendix

Employment by industry, Murray and South East, February 2023

Industry (in order of size)	Share of employment in the region Feb-23 (%)	Employed ('000)			1 year change		5 year change		Full-time share %	Part-time share %	Median age *
		Feb-23	Feb-22	Feb-18	('000)	%	('000)	%			
Agriculture, Forestry and Fishing	19.8	18.4	15.7	16.7	2.7	17.3	1.7	10.2	69.3	30.7	48
Health Care and Social Assistance	13.4	12.5	11.4	11.8	1.1	9.3	0.7	5.8	52.3	47.7	46
Manufacturing	9.9	9.2	8.9	8.5	0.2	2.8	0.7	8.4	85.9	14.1	43
Retail Trade	9.3	8.6	8.0	11.0	0.6	7.5	-2.4	-21.9	47.6	52.4	36
Construction	9.0	8.4	9.3	5.0	-1.0	-10.2	3.4	68.1	83.7	16.3	40
Accommodation and Food Services	6.1	5.6	6.5	6.3	-0.8	-12.9	-0.6	-10.0	35.7	64.3	27
Education and Training	5.3	5.0	5.9	5.7	-1.0	-16.1	-0.7	-12.2	54.3	45.7	44
Other Services	4.7	4.4	5.1	3.1	-0.7	-13.7	1.3	41.8	61.2	38.8	39
Transport, Postal and Warehousing	4.3	4.0	3.4	4.8	0.5	15.0	-0.9	-18.0	90.3	9.7	52
Public Administration and Safety	3.7	3.4	4.9	3.6	-1.5	-30.7	-0.2	-4.9	74.8	25.2	47
Wholesale Trade	3.7	3.4	1.7	2.5	1.7	95.2	0.9	35.8	94.7	5.3	47
Administrative and Support Services	3.4	3.2	2.4	3.3	0.8	32.5	-0.1	-2.7	51.1	48.9	47
Professional, Scientific and Technical Services	1.4	1.3	1.9	2.7	-0.6	-31.3	-1.4	-50.7	74.9	25.1	42
Arts and Recreation Services	1.2	1.1	0.9	1.1	0.2	24.1	0.0	-0.4	65.3	34.7	34
Mining	1.2	1.1	1.2	1.3	-0.1	-7.8	-0.2	-17.5	100.0	0.0	45
Electricity, Gas, Water and Waste Services	1.2	1.1	1.6	1.2	-0.6	-34.3	-0.1	-11.7	87.6	12.4	49
Financial and Insurance Services	1.1	1.0	0.7	0.8	0.4	53.9	0.2	31.9	56.0	44.0	45
Rental, Hiring and Real Estate Services	0.8	0.7	1.3	1.9	-0.6	-42.7	-1.1	-60.2	66.0	34.0	46
Information Media and Telecommunications	0.6	0.6	0.5	0.6	0.1	19.4	-0.1	-8.4	79.5	20.5	32
All industries	100.0	92.8	91.4	91.7	1.5	1.6	1.2	1.3	66.6	33.4	44

Source: ABS Labour Force Survey, Detailed, four quarter averages, February 2023. *Median age is from the ABS Census of Population and Housing, 2021. Median age has been derived using aggregated SA2s for the Employment Region.

Note: Small cells should be viewed with caution due to small sample sizes and regional volatility.