



Employment Region Industry profile

Mid North SA Employment Region

Release date: 28 April 2023

Overview

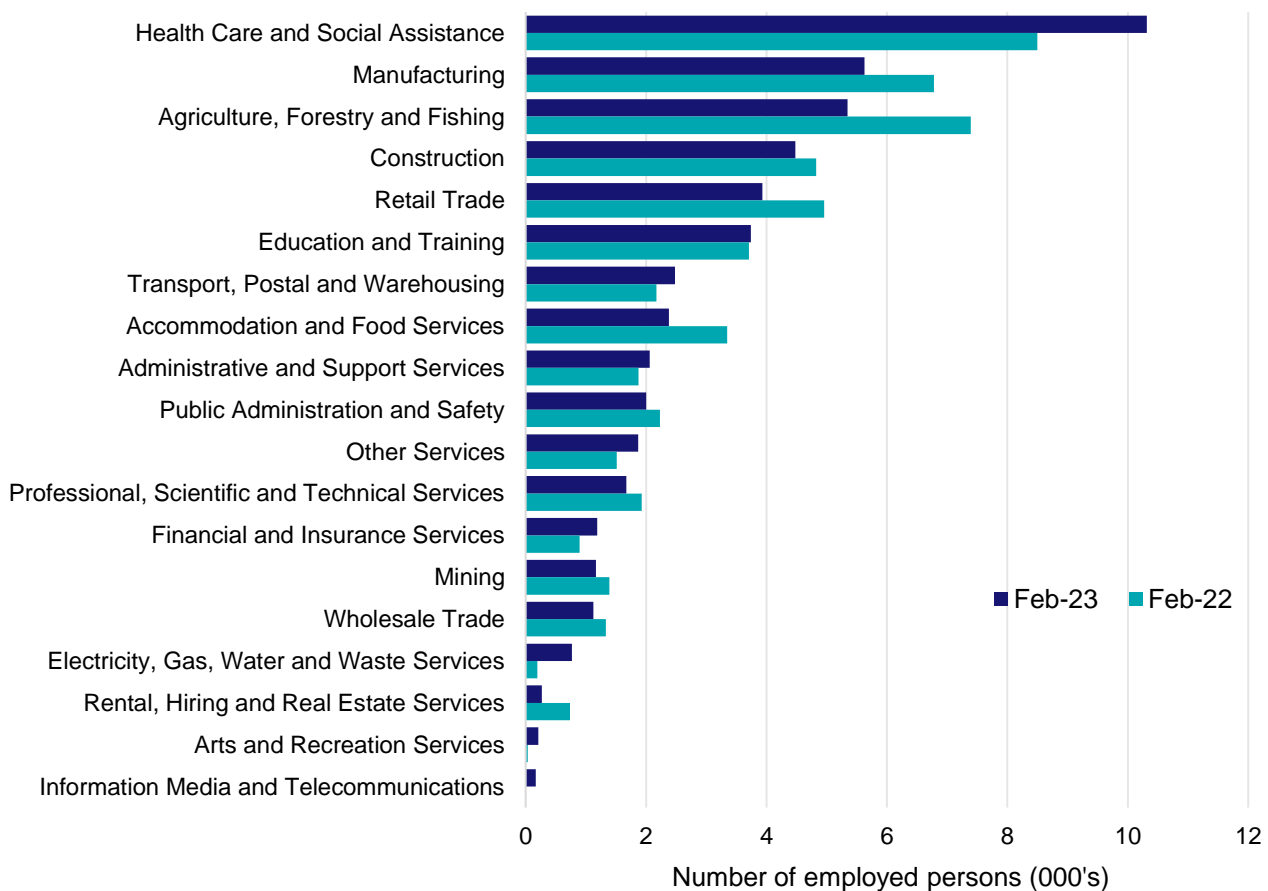
In February 2023, there were around 50,800 people employed in the Mid North SA Employment Region. The 5 largest employing industries in the region were Health Care and Social Assistance, Manufacturing, Agriculture, Forestry and Fishing, Construction, and Retail Trade. Together these 5 industries accounted for 58% of employment in the region.

Over the year to February 2023, employment in:

- Health Care and Social Assistance rose by 21.4% to stand at 10,300
- Manufacturing fell by 17.1% to stand at 5,600
- Agriculture, Forestry and Fishing fell by 27.7% to stand at 5,300.

In Health Care and Social Assistance in the Mid North SA Employment Region, 57% of workers were employed part-time; 79% were female; and the median age of the workforce was 48.

Employment by industry, February 2023 and February 2022



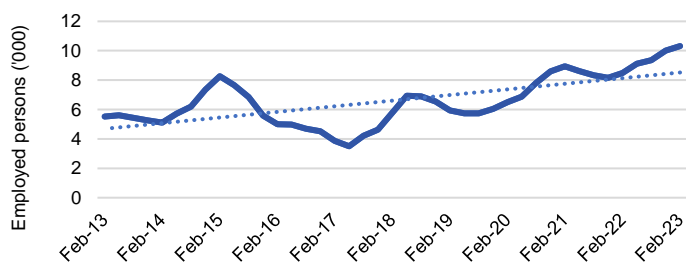
Source: ABS Labour Force Survey*, Detailed, four quarter averages, February 2023. Note that total employment for the region (four quarter averaged data) may not match data published in the Employment Region Labour Market dashboards (6 month averaged data).

*ABS Labour Force Survey data are based on the Barossa - Yorke - Mid North SA4.

Notes: Data are the latest available. Estimates should be treated with caution, as data can be volatile at a regional level. For any enquiries related to the data in this report, please contact RegionalWorkforceAssessment@jobsandskills.gov.au

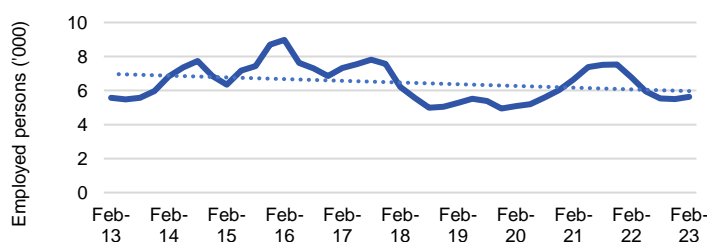
Five largest employing industries: key statistics

Health Care and Social Assistance



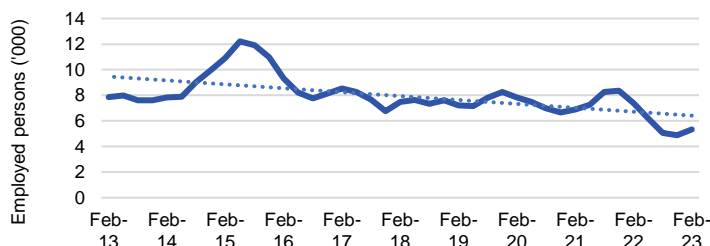
Number employed (Feb-23):	10,300
1 year employment change:	21.4%
5 year employment change:	78.2%
10 year employment change:	86.6%
Youth share of employment:	9.0%
Mature age share of employment:	15.1%

Manufacturing



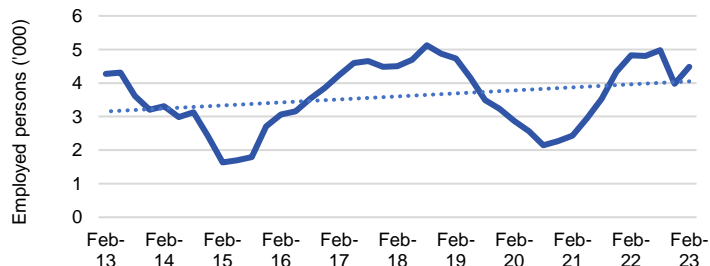
Number employed (Feb-23):	5,600
1 year employment change:	-17.1%
5 year employment change:	-9.4%
10 year employment change:	1.0%
Youth share of employment:	11.6%
Mature age share of employment:	9.8%

Agriculture, Forestry and Fishing



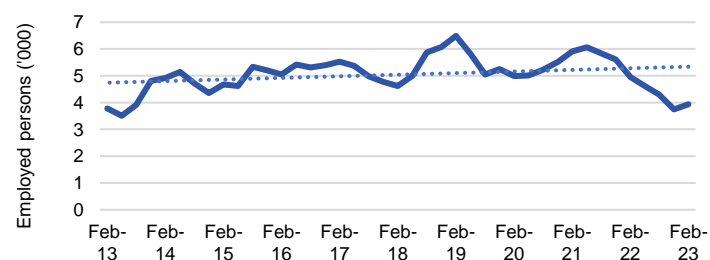
Number employed (Feb-23):	5,300
1 year employment change:	-27.7%
5 year employment change:	-28.5%
10 year employment change:	-32.0%
Youth share of employment:	8.4%
Mature age share of employment:	20.0%

Construction



Number employed (Feb-23):	4,500
1 year employment change:	-7.1%
5 year employment change:	-0.5%
10 year employment change:	4.8%
Youth share of employment:	9.4%
Mature age share of employment:	6.2%

Retail Trade



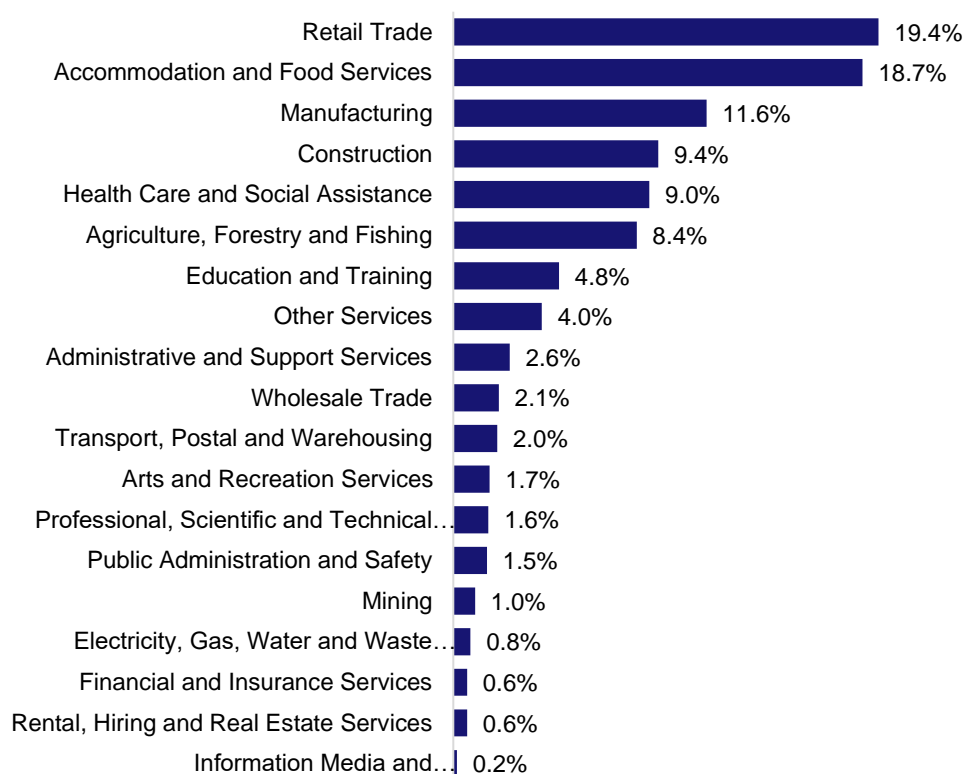
Number employed (Feb-23):	3,900
1 year employment change:	-20.7%
5 year employment change:	-14.8%
10 year employment change:	4.1%
Youth share of employment:	19.4%
Mature age share of employment:	7.1%

Source: ABS Labour Force Survey, Detailed, four quarter averages, February 2023, except youth and mature age data which are from the ABS Census of Population and Housing, 2021.

Note: In each chart, the solid line is the level of employment and the dotted line is a simple linear trend line for the 10 year period.

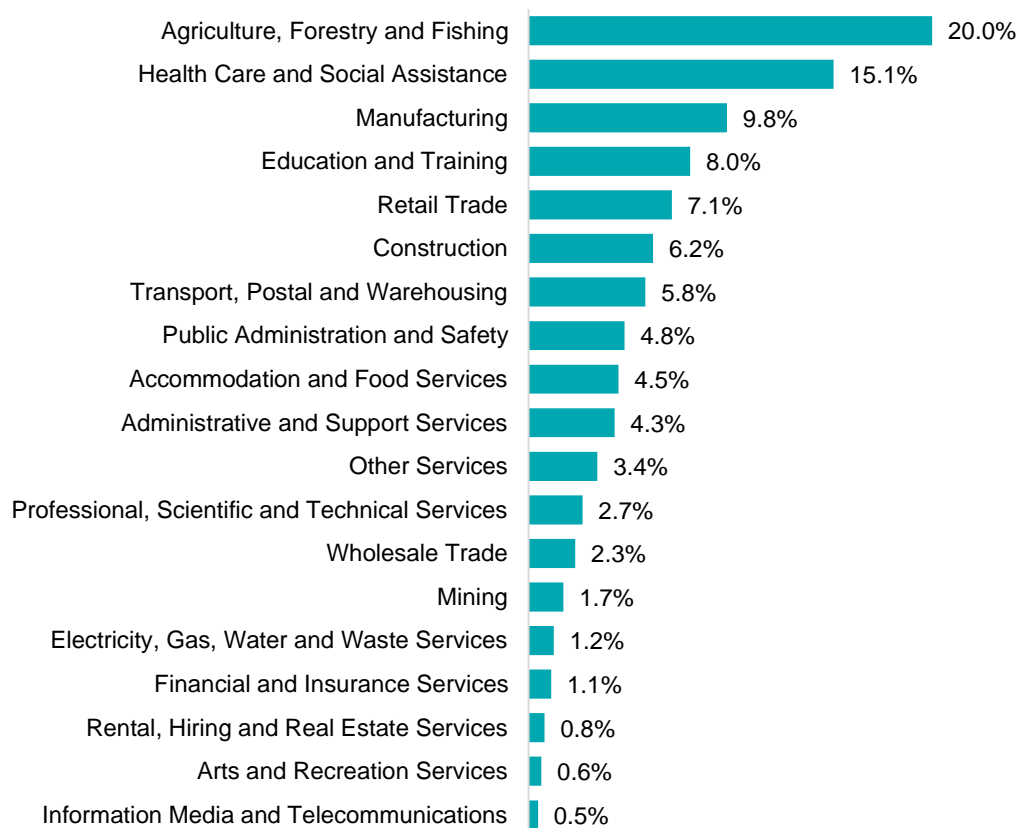
Employment characteristics by Industry

Which industries are youth (aged 15-24) employed in?



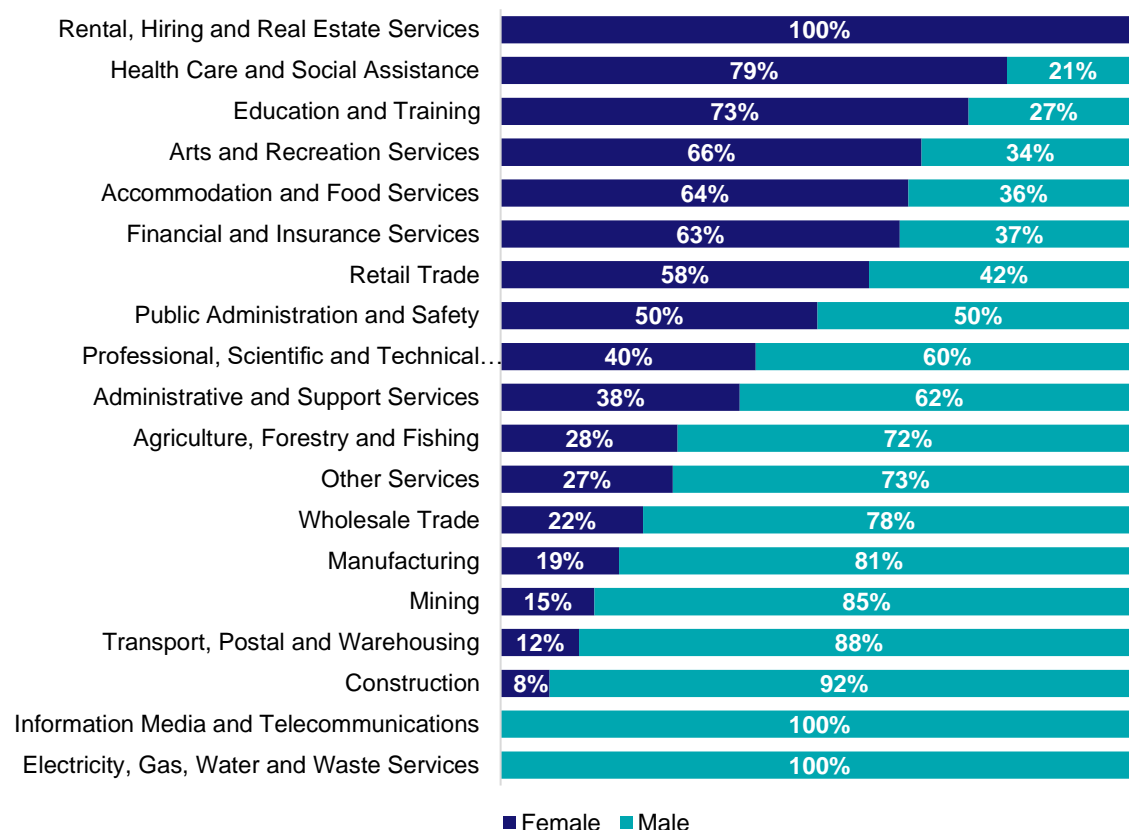
Source: ABS Census of Population and Housing, 2021.

Which industries are mature age persons (aged 55+) employed in?



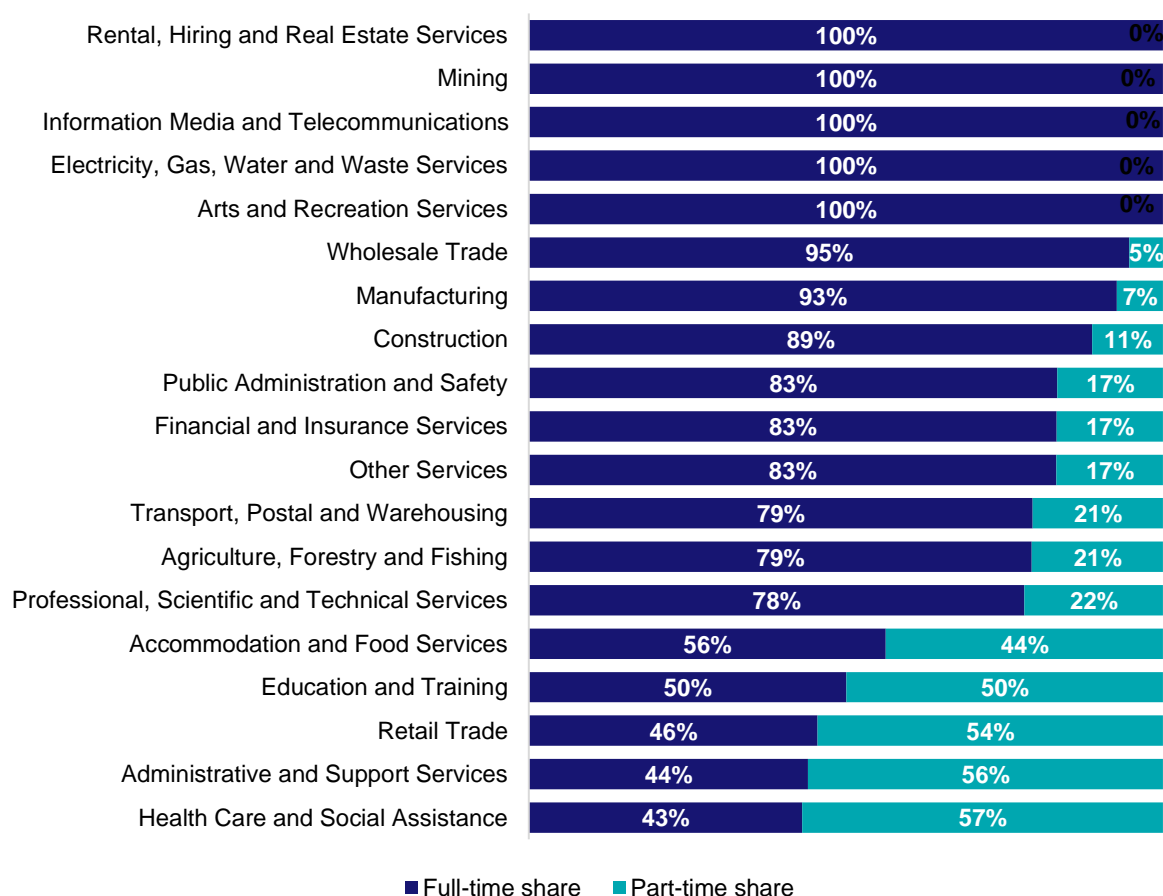
Source: ABS Census of Population and Housing, 2021. Note: SA2 level Census data have been aggregated to the Employment Region level.

Gender share by industry



Source: ABS Labour Force Survey, Detailed, four quarter averages, February 2023.

Full-time and part-time employment status by industry



Source: ABS Labour Force Survey, Detailed, four quarter averages, February 2023.

Appendix

Employment by industry, Mid North SA, February 2023

Industry (in order of size)	Share of employment in the region Feb-23 (%)	Employed ('000)			1 year change		5 year change		Full-time share %	Part-time share %	Median age *
		Feb-23	Feb-22	Feb-18	('000)	%	('000)	%			
Health Care and Social Assistance	20.3	10.3	8.5	5.8	1.8	21.4	4.5	78.2	43.1	56.9	48
Manufacturing	11.1	5.6	6.8	6.2	-1.2	-17.1	-0.6	-9.4	92.7	7.3	44
Agriculture, Forestry and Fishing	10.5	5.3	7.4	7.5	-2.0	-27.7	-2.1	-28.5	79.3	20.7	52
Construction	8.8	4.5	4.8	4.5	-0.3	-7.1	0.0	-0.5	88.8	11.2	40
Retail Trade	7.7	3.9	5.0	4.6	-1.0	-20.7	-0.7	-14.8	45.5	54.5	37
Education and Training	7.4	3.7	3.7	3.7	0.0	0.8	0.0	0.2	50.1	49.9	46
Transport, Postal and Warehousing	4.9	2.5	2.2	2.7	0.3	14.1	-0.3	-9.2	79.5	20.5	51
Accommodation and Food Services	4.7	2.4	3.3	2.8	-1.0	-28.9	-0.4	-15.4	56.3	43.7	32
Administrative and Support Services	4.1	2.1	1.9	1.8	0.2	9.9	0.2	12.9	44.0	56.0	48
Public Administration and Safety	3.9	2.0	2.2	2.8	-0.2	-10.3	-0.8	-29.3	83.3	16.7	49
Other Services	3.7	1.9	1.5	1.4	0.4	23.8	0.5	38.0	83.2	16.8	43
Professional, Scientific and Technical Services	3.3	1.7	1.9	2.1	-0.3	-13.3	-0.4	-19.0	78.1	21.9	44
Financial and Insurance Services	2.3	1.2	0.9	0.8	0.3	32.8	0.4	47.0	83.2	16.8	43
Mining	2.3	1.2	1.4	0.2	-0.2	-16.2	0.9	386.5	100.0	0.0	43
Wholesale Trade	2.2	1.1	1.3	1.1	-0.2	-15.5	0.0	4.5	94.7	5.3	49
Electricity, Gas, Water and Waste Services	1.5	0.8	0.2	0.5	0.6	291.3	0.3	70.5	100.0	0.0	42
Rental, Hiring and Real Estate Services	0.5	0.3	0.7	0.2	-0.5	-63.4	0.1	79.1	100.0	0.0	51
Arts and Recreation Services	0.4	0.2	0.0	1.1	0.2	472.0	-0.9	-81.2	100.0	0.0	28
Information Media and Telecommunications	0.3	0.2	0.0	0.6	0.2	-	-0.5	-74.4	100.0	0.0	38
All industries	100.0	50.8	53.8	50.4	-3.0	-5.6	0.4	0.7	68.8	31.2	45

Source: ABS Labour Force Survey, Detailed, four quarter averages, February 2023. *Median age is from the ABS Census of Population and Housing, 2021. Median age has been derived using aggregated SA2s for the Employment Region.

Note: Small cells should be viewed with caution due to small sample sizes and regional volatility.