



Employment Region Industry profile

Capital Region Employment Region

Release date: 28 April 2023

Overview

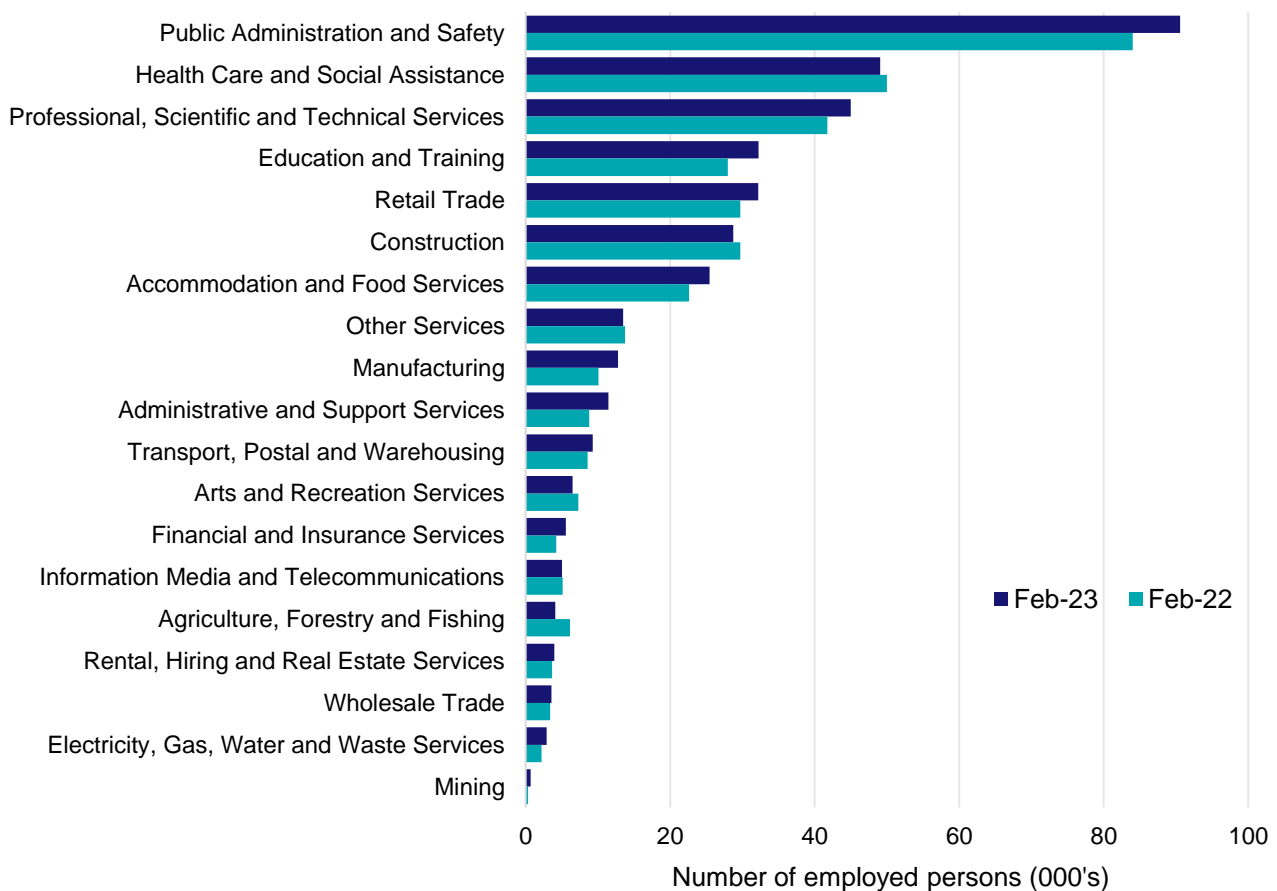
In February 2023, there were around 382,400 people employed in the Capital Region Employment Region. The 5 largest employing industries in the region were Public Administration and Safety, Health Care and Social Assistance, Professional, Scientific and Technical Services, Education and Training, and Retail Trade. Together these 5 industries accounted for 65% of employment in the region.

Over the year to February 2023, employment in:

- Public Administration and Safety rose by 7.8% to stand at 90,600
- Health Care and Social Assistance fell by 1.8% to stand at 49,100
- Professional, Scientific and Technical Services rose by 7.7% to stand at 45,000.

In Public Administration and Safety in the Capital Region Employment Region, 88% of workers were employed full-time; 53% were female; and the median age of the workforce was 41.

Employment by industry, February 2023 and February 2022



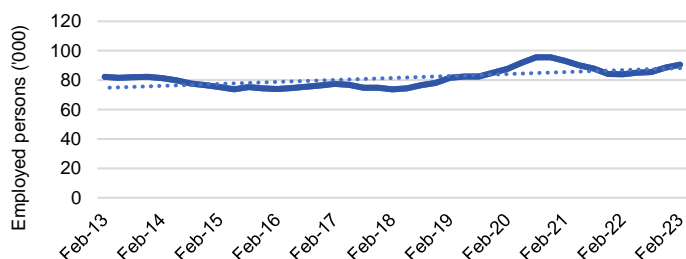
Source: ABS Labour Force Survey*, Detailed, four quarter averages, February 2023. Note that total employment for the region (four quarter averaged data) may not match data published in the Employment Region Labour Market dashboards (6 month averaged data).

*ABS Labour Force Survey data are based on the combined SA4s of Australian Capital Territory and Capital Region.

Notes: Data are the latest available. Estimates should be treated with caution, as data can be volatile at a regional level. For any enquiries related to the data in this report, please contact RegionalWorkforceAssessment@jobsandskills.gov.au

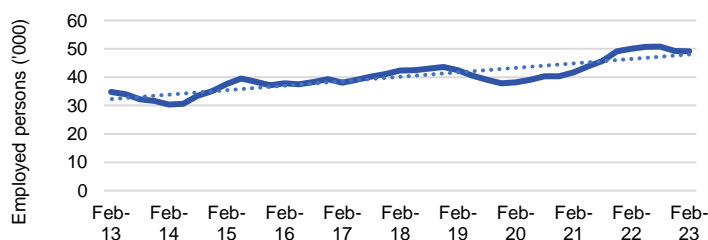
Five largest employing industries: key statistics

Public Administration and Safety



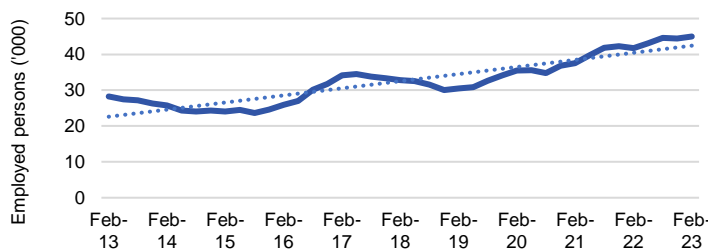
Number employed (Feb-23):	90,600
1 year employment change:	7.8%
5 year employment change:	22.9%
10 year employment change:	10.1%
Youth share of employment:	12.4%
Mature age share of employment:	25.0%

Health Care and Social Assistance



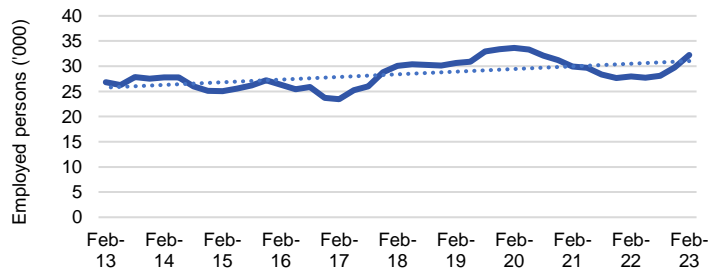
Number employed (Feb-23):	49,100
1 year employment change:	-1.8%
5 year employment change:	15.8%
10 year employment change:	41.1%
Youth share of employment:	8.9%
Mature age share of employment:	13.0%

Professional, Scientific and Technical Services



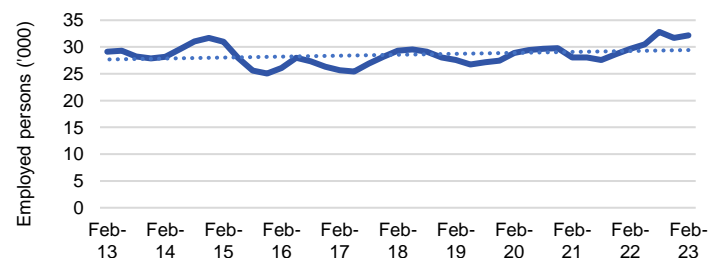
Number employed (Feb-23):	45,000
1 year employment change:	7.7%
5 year employment change:	37.1%
10 year employment change:	59.2%
Youth share of employment:	6.6%
Mature age share of employment:	9.6%

Education and Training



Number employed (Feb-23):	32,200
1 year employment change:	15.1%
5 year employment change:	7.1%
10 year employment change:	20.2%
Youth share of employment:	8.0%
Mature age share of employment:	10.2%

Retail Trade



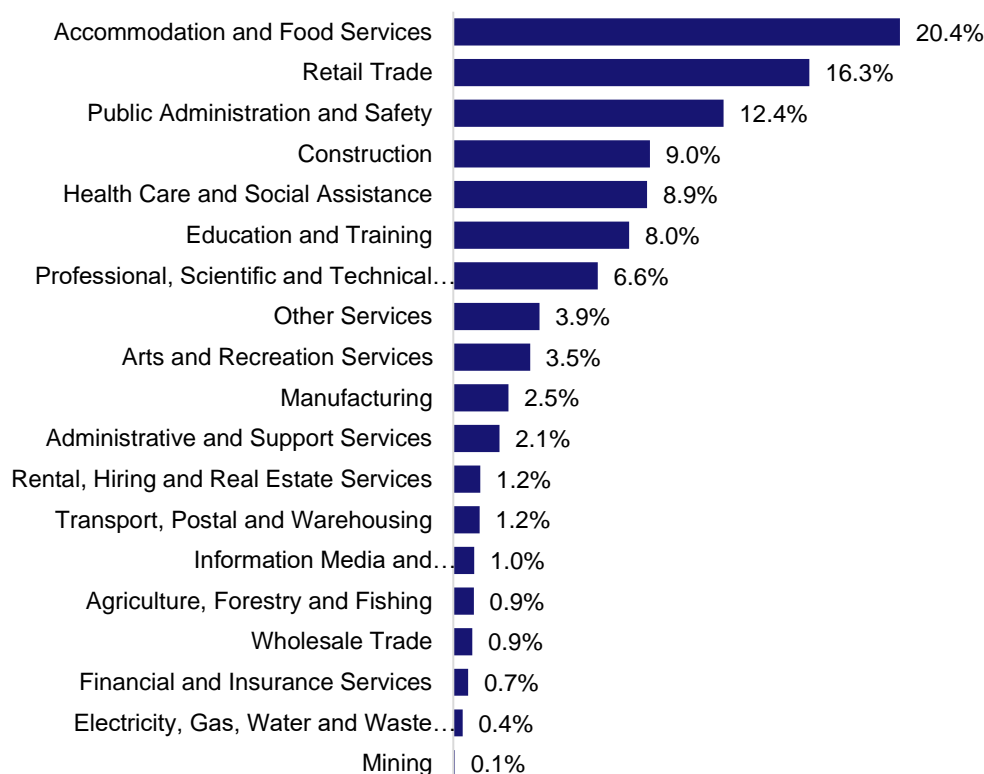
Number employed (Feb-23):	32,200
1 year employment change:	8.4%
5 year employment change:	9.7%
10 year employment change:	10.4%
Youth share of employment:	16.3%
Mature age share of employment:	5.8%

Source: ABS Labour Force Survey, Detailed, four quarter averages, February 2023, except youth and mature age data which are from the ABS Census of Population and Housing, 2021.

Note: In each chart, the solid line is the level of employment and the dotted line is a simple linear trend line for the 10 year period.

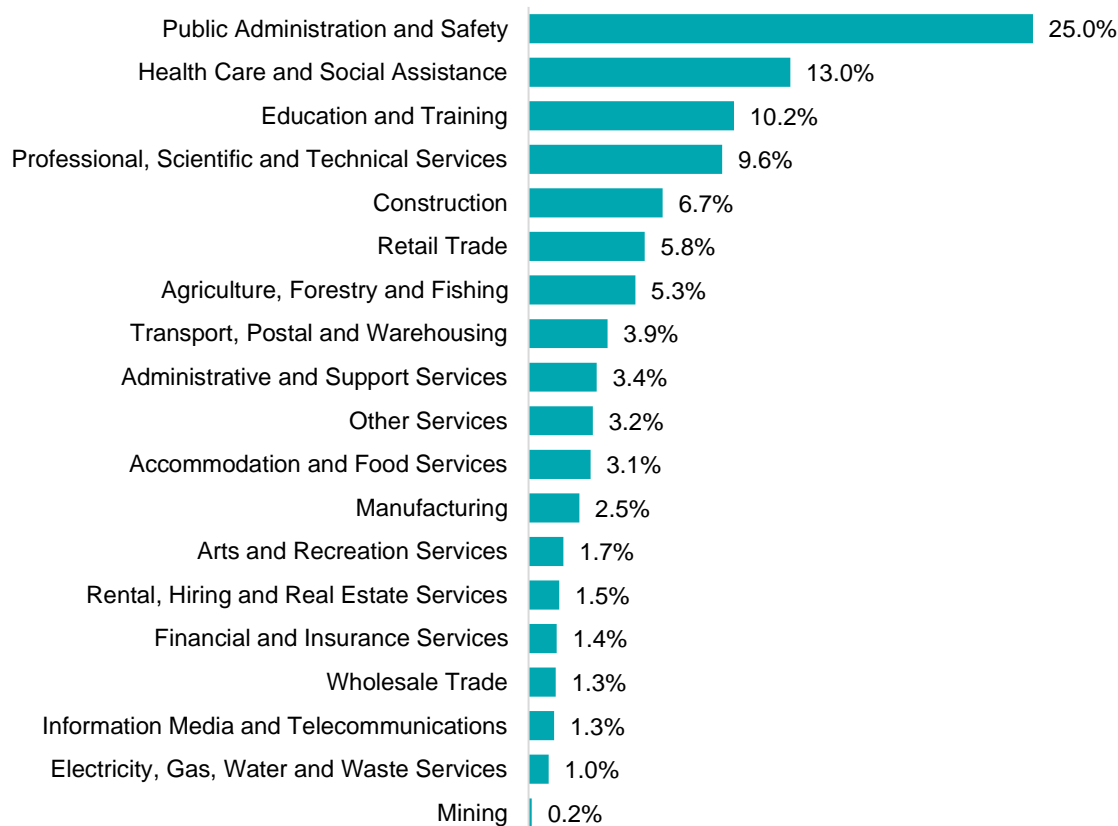
Employment characteristics by Industry

Which industries are youth (aged 15-24) employed in?



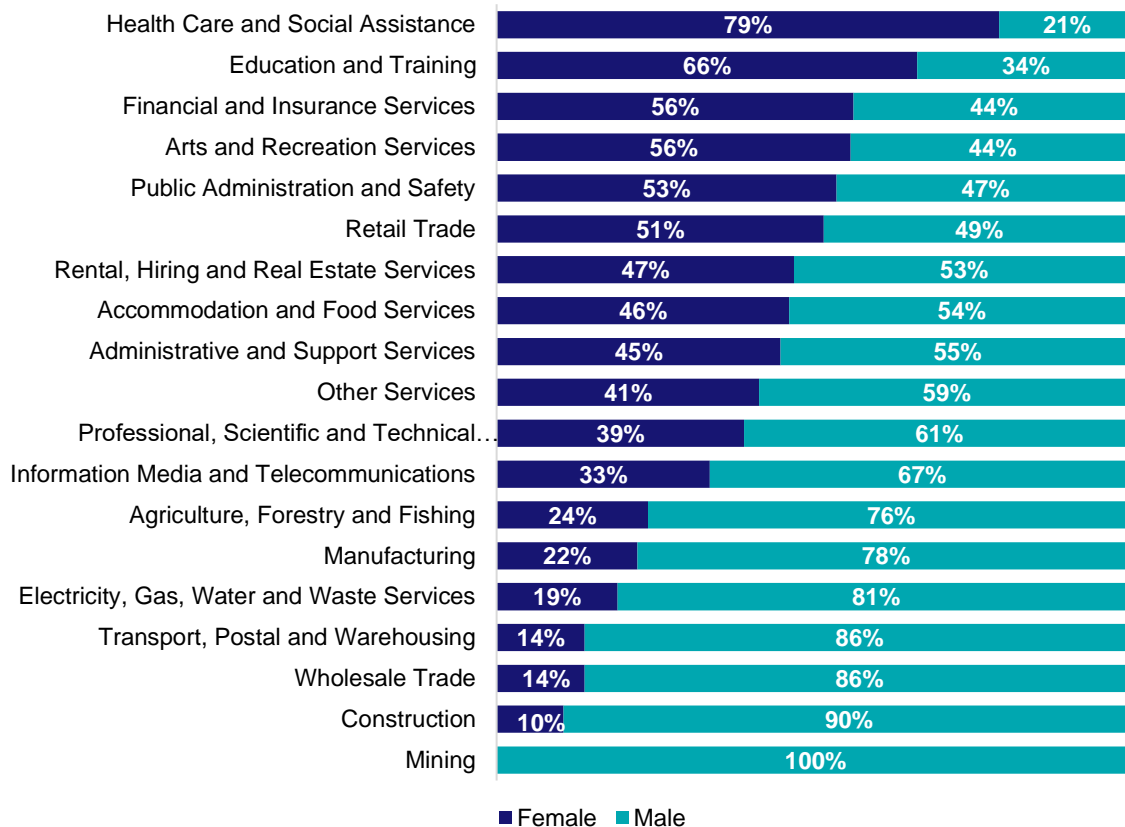
Source: ABS Census of Population and Housing, 2021.

Which industries are mature age persons (aged 55+) employed in?



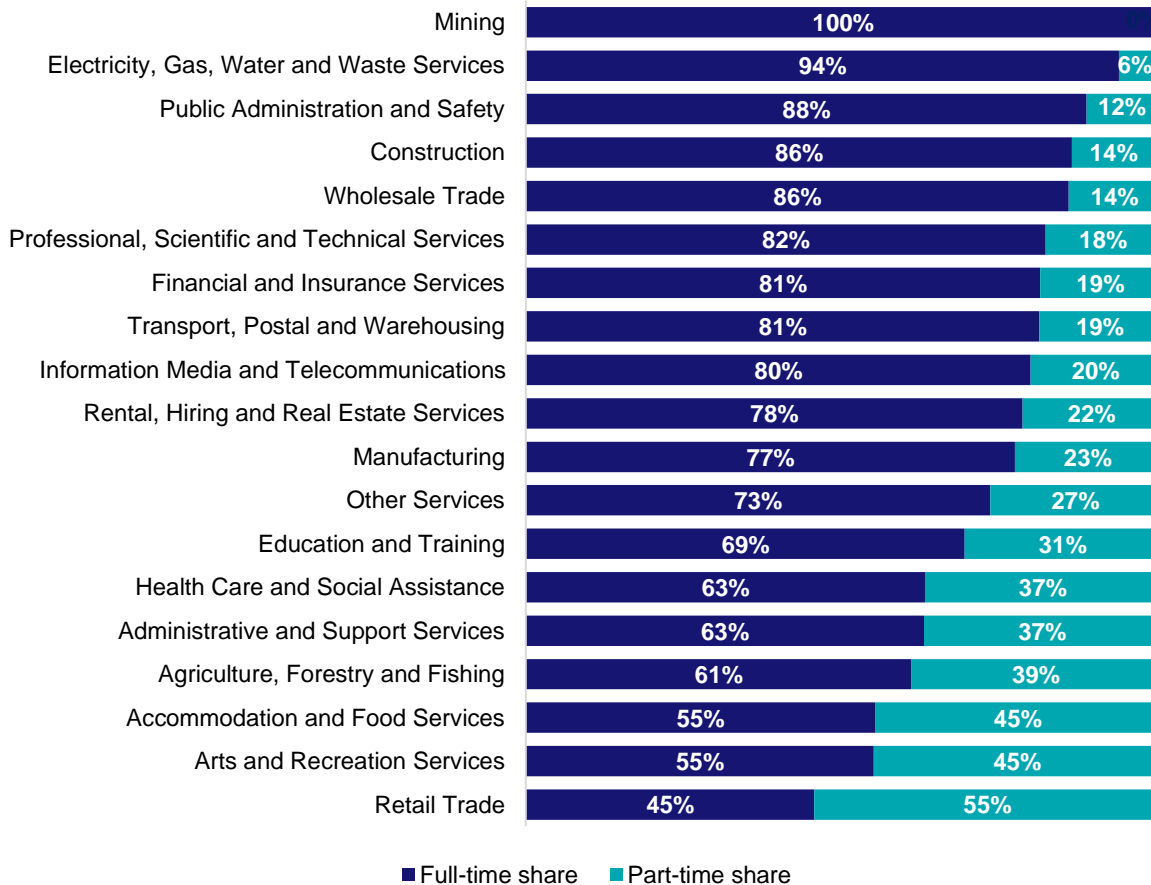
Source: ABS Census of Population and Housing, 2021. Note: SA2 level Census data have been aggregated to the Employment Region level.

Gender share by industry



Source: ABS Labour Force Survey, Detailed, four quarter averages, February 2023.

Full-time and part-time employment status by industry



Source: ABS Labour Force Survey, Detailed, four quarter averages, February 2023.

Appendix

Employment by industry, Capital Region, February 2023

Industry (in order of size)	Share of employment in the region Feb-23 (%)	Employed ('000)			1 year change		5 year change		Full-time share %	Part-time share %	Median age *
		Feb-23	Feb-22	Feb-18	('000)	%	('000)	%			
Public Administration and Safety	23.7	90.6	84.0	73.7	6.6	7.8	16.9	22.9	88.4	11.6	41
Health Care and Social Assistance	12.8	49.1	50.0	42.4	-0.9	-1.8	6.7	15.8	62.9	37.1	39
Professional, Scientific and Technical Services	11.8	45.0	41.8	32.8	3.2	7.7	12.2	37.1	82.0	18.0	39
Education and Training	8.4	32.2	28.0	30.1	4.2	15.1	2.1	7.1	69.2	30.8	40
Retail Trade	8.4	32.2	29.7	29.3	2.5	8.4	2.8	9.7	45.5	54.5	29
Construction	7.5	28.7	29.7	27.7	-1.0	-3.2	1.0	3.6	86.1	13.9	36
Accommodation and Food Services	6.7	25.5	22.6	30.0	2.8	12.5	-4.5	-15.0	55.1	44.9	24
Other Services	3.5	13.5	13.7	12.3	-0.2	-1.8	1.2	9.7	73.2	26.8	36
Manufacturing	3.3	12.8	10.1	12.4	2.7	26.7	0.4	2.8	77.1	22.9	38
Administrative and Support Services	3.0	11.4	8.8	8.3	2.7	30.2	3.1	37.7	62.8	37.2	39
Transport, Postal and Warehousing	2.4	9.3	8.6	9.1	0.7	8.0	0.2	1.8	81.0	19.0	42
Arts and Recreation Services	1.7	6.5	7.3	7.0	-0.8	-11.0	-0.5	-7.8	54.9	45.1	30
Financial and Insurance Services	1.5	5.6	4.2	4.4	1.3	31.0	1.2	27.4	81.1	18.9	38
Information Media and Telecommunications	1.3	5.0	5.1	5.4	-0.1	-2.1	-0.4	-7.8	79.6	20.4	38
Agriculture, Forestry and Fishing	1.1	4.1	6.1	7.3	-2.0	-33.3	-3.2	-44.3	60.8	39.2	56
Rental, Hiring and Real Estate Services	1.0	4.0	3.7	4.0	0.3	8.4	0.0	-0.4	78.3	21.7	36
Wholesale Trade	0.9	3.6	3.4	5.1	0.2	4.7	-1.6	-31.0	85.6	14.4	42
Electricity, Gas, Water and Waste Services	0.8	2.9	2.2	3.8	0.7	30.6	-0.9	-23.1	93.5	6.5	40
Mining	0.2	0.7	0.3	0.9	0.4	110.3	-0.2	-25.3	100.0	0.0	39
All industries	100.0	382.4	359.3	346.1	23.1	6.4	36.3	10.5	73.8	26.2	38

Source: ABS Labour Force Survey, Detailed, four quarter averages, February 2023. *Median age is from the ABS Census of Population and Housing, 2021. Median age has been derived using aggregated SA2s for the Employment Region.

Note: Small cells should be viewed with caution due to small sample sizes and regional volatility.