



Industry profile

Tasmania

Release date: 28 April 2023

Overview

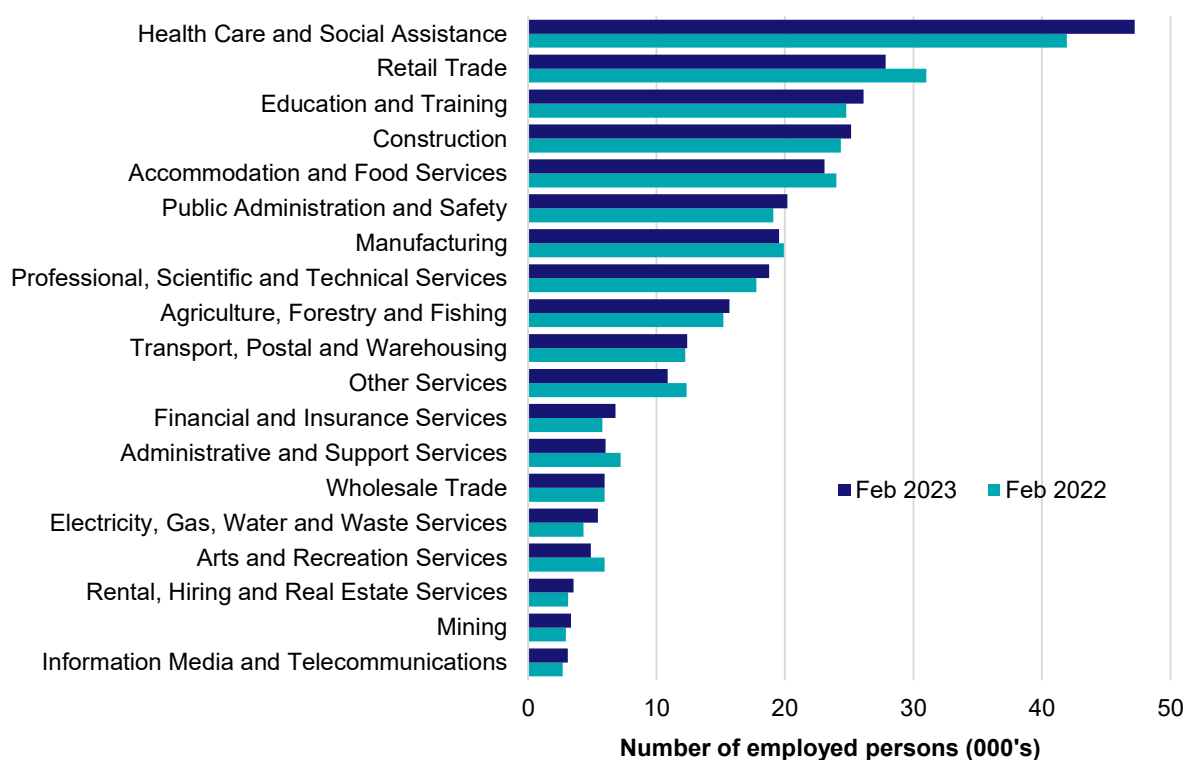
In February 2023, there were around 286,000 people employed in Tasmania. The 5 largest employing industries in Tasmania were Health Care and Social Assistance, Retail Trade, Education and Training, Construction and Accommodation and Food Services. Together these 5 industries accounted for 52% of all employment.

Over the year to February 2023, employment in:

- Health Care and Social Assistance rose by 12.6% to stand at 47,200
- Retail Trade fell by 10.2% to stand at 27,800
- Education and Training rose by 5.4% to stand at 26,100.

In Health Care and Social Assistance in Tasmania, 50% of workers were employed part-time; 76% were Female; and the median age of the workforce was 43. Around 45% of employed persons in this industry were located in Greater Hobart.

Employment by industry, February 2023 and February 2022

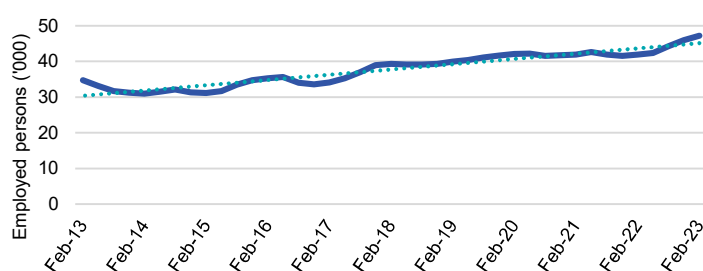


Source: ABS Labour Force Survey, Detailed, four quarter averages, February 2023. Note that total employment (four quarter averaged data) may not match data published in the Labour Market dashboards (6 month averaged data).

Note: For any enquiries related to the data in this report, contact RegionalWorkforceAssessment@jobsandskills.gov.au

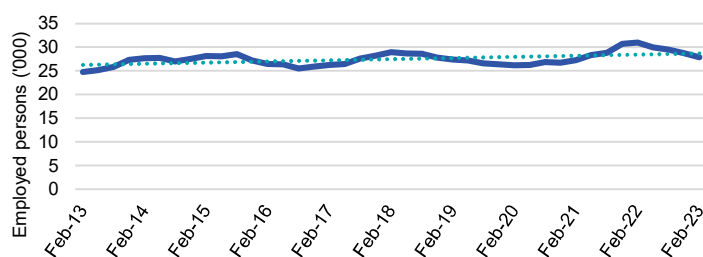
Five largest employing industries: key statistics

Health Care and Social Assistance



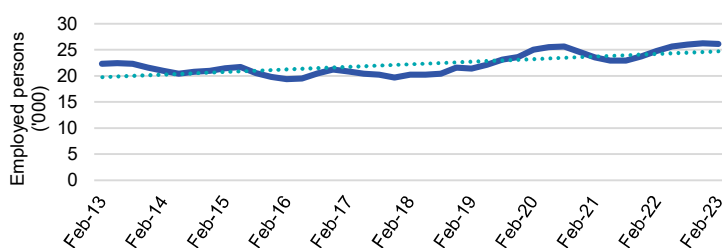
Number employed (Feb-23):	47,200
1 year employment change:	12.6%
5 year employment change:	20.1%
10 year employment change:	35.8%
Youth share of employment:	10.2%
Mature age share of employment:	18.6%

Retail Trade



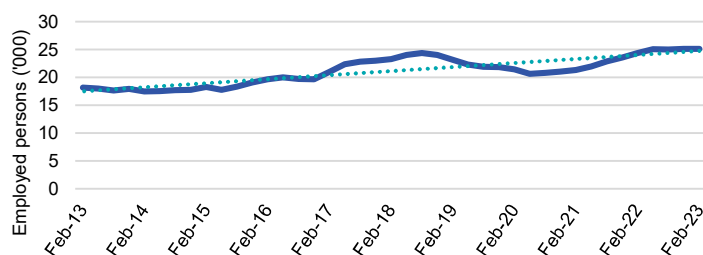
Number employed (Feb-23):	27,800
1 year employment change:	-10.2%
5 year employment change:	-3.7%
10 year employment change:	12.3%
Youth share of employment:	20.4%
Mature age share of employment:	7.5%

Education and Training



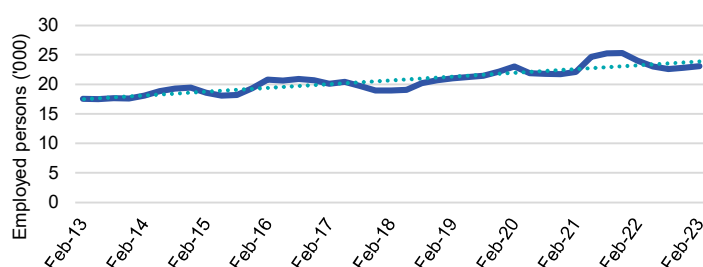
Number employed (Feb-23):	26,100
1 year employment change:	5.4%
5 year employment change:	29.3%
10 year employment change:	17.0%
Youth share of employment:	4.8%
Mature age share of employment:	10.8%

Construction



Number employed (Feb-23):	25,200
1 year employment change:	3.3%
5 year employment change:	8.1%
10 year employment change:	38.7%
Youth share of employment:	11.1%
Mature age share of employment:	7.8%

Accommodation and Food Services



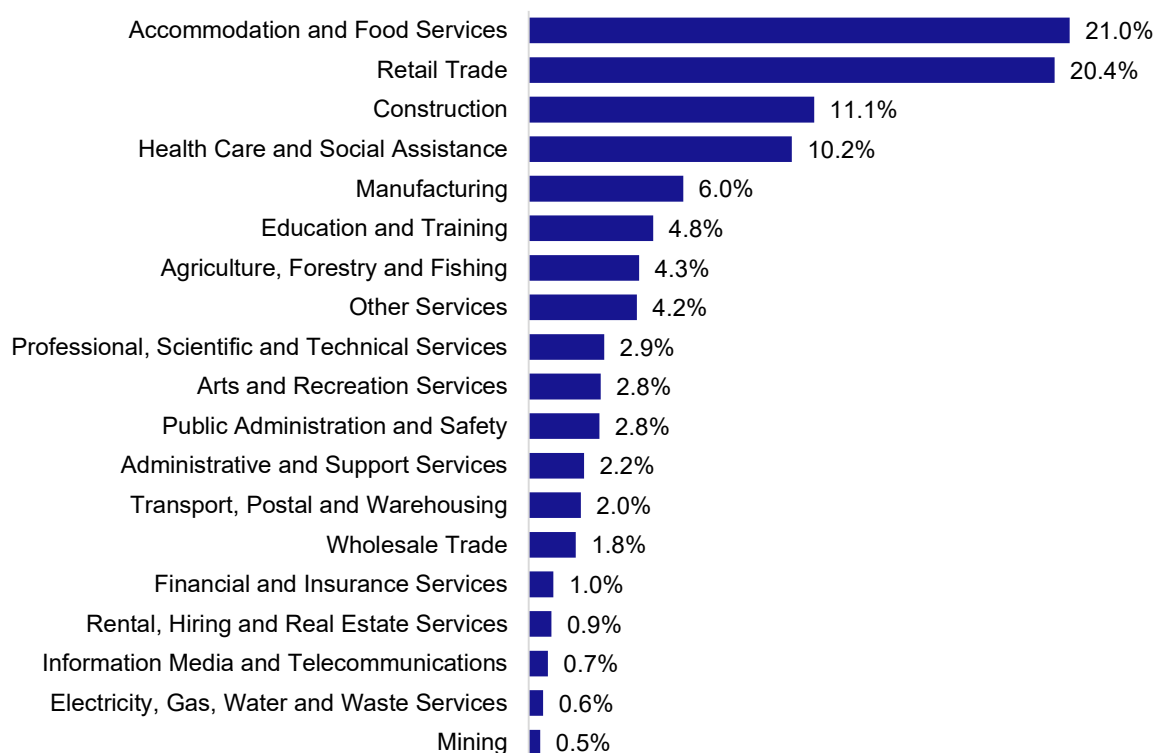
Number employed (Feb-23):	23,100
1 year employment change:	-3.9%
5 year employment change:	21.8%
10 year employment change:	31.4%
Youth share of employment:	21.0%
Mature age share of employment:	4.1%

Source: ABS Labour Force Survey, Detailed, four quarter averages, February 2023, except youth and mature age data which are from the ABS Census of Population and Housing, 2021.

Note: In each chart, the solid line is the level of employment and the dotted line is a simple linear trend line for the 10 year period.

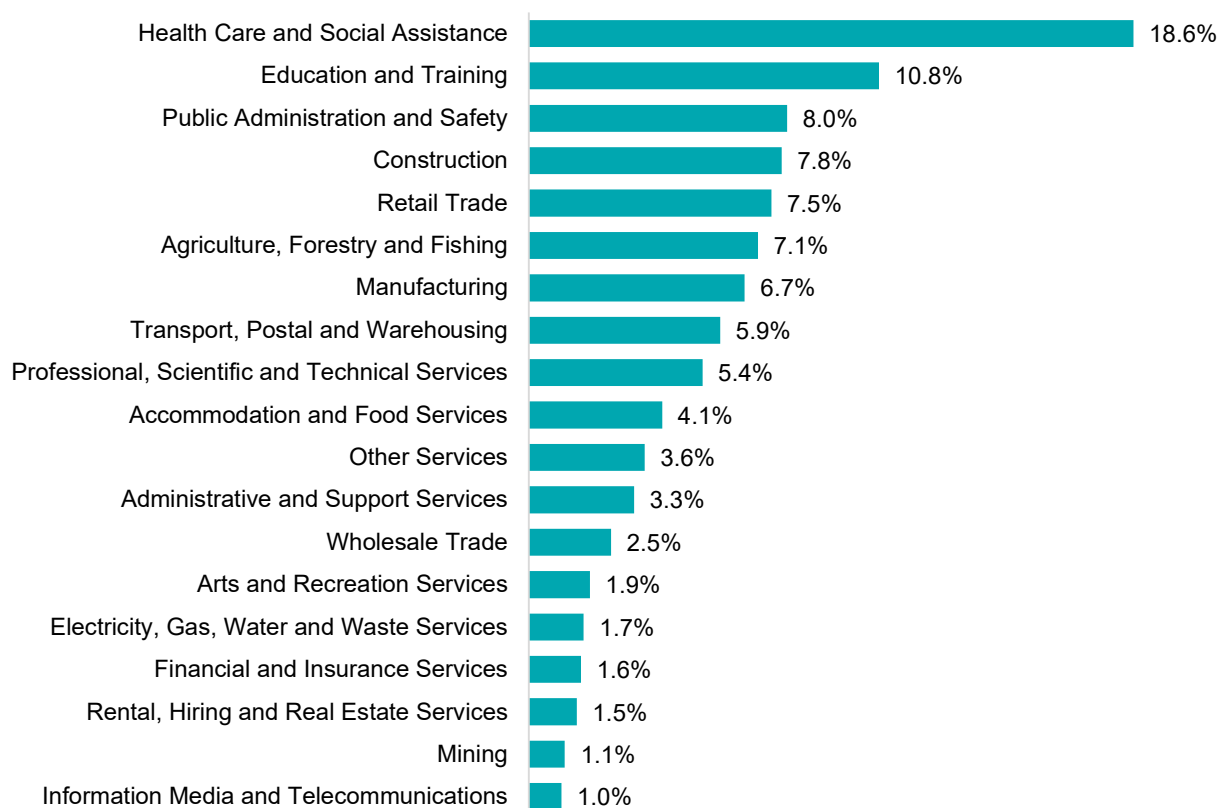
Employment characteristics by Industry

Which industries are youth (aged 15-24) employed in?



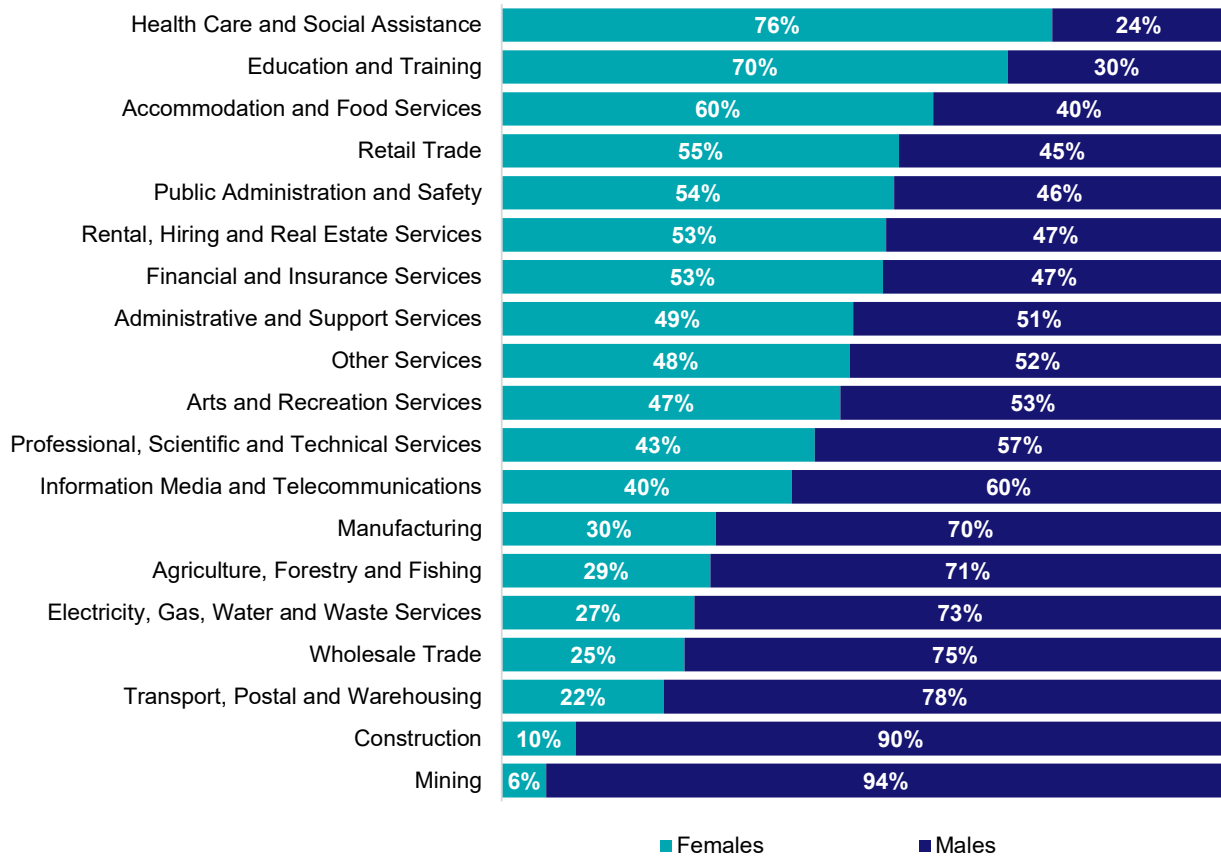
Source: ABS Census of Population and Housing, 2021.

Which industries are mature age persons (aged 55+) employed in?



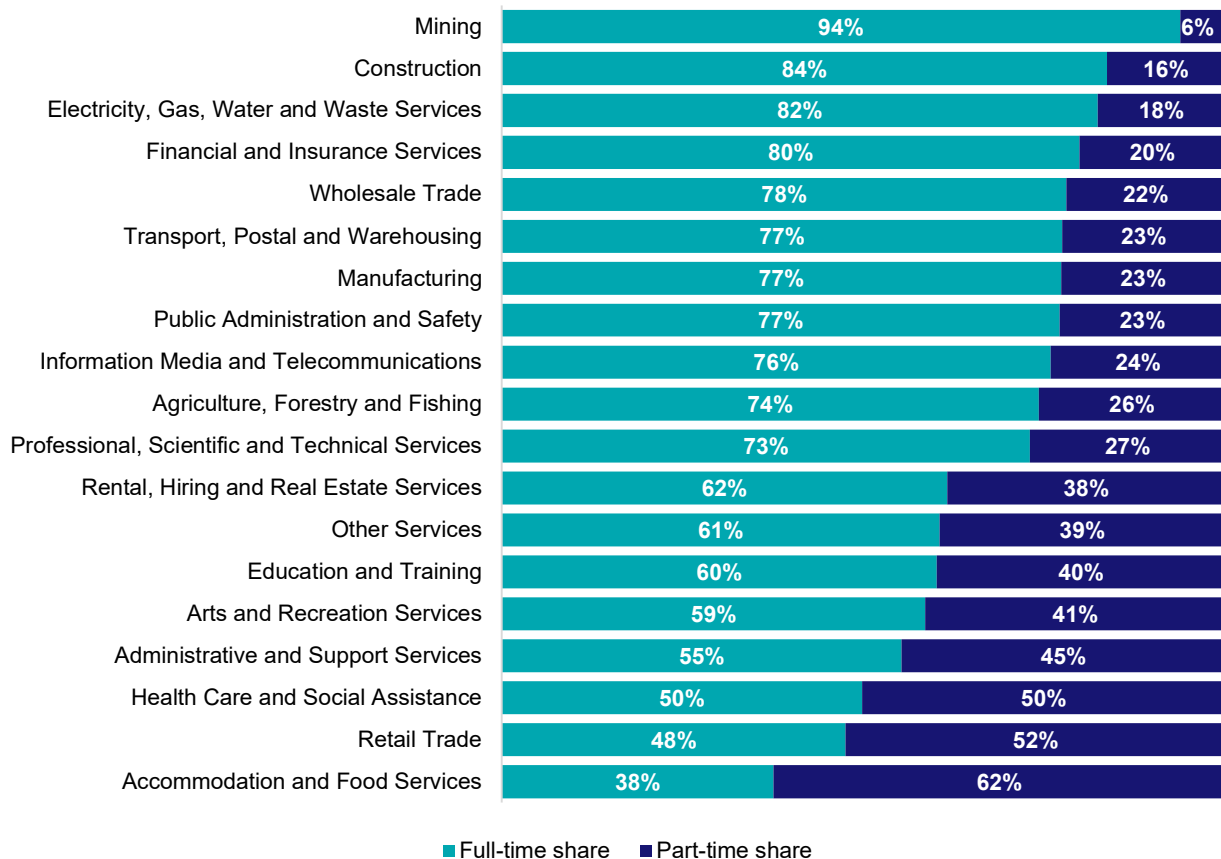
Source: ABS Census of Population and Housing, 2021.

Gender share by industry



Source: ABS Labour Force Survey, Detailed, four quarter averages, February 2023.

Full-time and part-time employment status by industry



Source: ABS Labour Force Survey, Detailed, four quarter averages, February 2023.

Appendix

Employment by industry, Tasmania, February 2023

Industry (in order of size)	Share of emp't Feb-23 (%)	Share of emp't in Greater Hobart (%)	Share of emp't in Rest of TAS (%)	Employed ('000)			1 year change		5 year change		Median age *
				Feb-23	Feb-22	Feb-18	('000)	%	('000)	%	
Health Care and Social Assistance	16.5	44.6	55.4	47.2	41.9	39.3	5.3	12.6	7.9	20.1	43
Retail Trade	9.7	43.4	56.6	27.8	31.0	28.9	-3.2	-10.2	-1.1	-3.7	34
Education and Training	9.1	50.2	49.8	26.1	24.8	20.2	1.3	5.4	5.9	29.3	45
Construction	8.8	45.5	54.5	25.2	24.4	23.3	0.8	3.3	1.9	8.1	38
Accommodation and Food Services	8.1	45.1	54.9	23.1	24.0	18.9	-0.9	-3.9	4.1	21.8	29
Public Administration and Safety	7.1	60.9	39.1	20.2	19.1	16.4	1.1	5.7	3.8	23.3	46
Manufacturing	6.8	29.5	70.5	19.6	19.9	18.8	-0.4	-1.8	0.7	3.9	42
Professional, Scientific and Technical Services	6.6	62.4	37.6	18.8	17.8	12.0	1.0	5.6	6.8	56.9	42
Agriculture, Forestry and Fishing	5.5	20.0	80.0	15.7	15.2	13.9	0.5	3.2	1.8	12.9	44
Transport, Postal and Warehousing	4.3	39.0	61.0	12.4	12.3	11.4	0.1	1.2	1.0	9.2	47
Other Services	3.8	48.4	51.6	10.9	12.3	11.0	-1.5	-12.0	-0.1	-1.1	39
Financial and Insurance Services	2.4	60.8	39.2	6.8	5.8	5.4	1.0	18.0	1.4	26.0	41
Administrative and Support Services	2.1	45.4	54.6	6.0	7.2	6.5	-1.2	-16.1	-0.4	-6.7	43
Wholesale Trade	2.1	33.1	66.9	6.0	6.0	4.8	0.0	0.0	1.1	23.0	44
Electricity, Gas, Water and Waste Services	1.9	47.2	52.8	5.4	4.3	4.1	1.1	26.0	1.3	31.3	44
Arts and Recreation Services	1.7	59.5	40.5	4.9	6.0	6.5	-1.1	-17.9	-1.6	-24.5	40
Rental, Hiring and Real Estate Services	1.2	37.4	62.6	3.5	3.1	3.4	0.4	13.5	0.1	3.5	45
Mining	1.2	20.7	79.3	3.4	3.0	4.4	0.4	13.7	-1.0	-23.7	44
Information Media and Telecommunications	1.1	61.8	38.2	3.1	2.7	3.9	0.4	15.2	-0.8	-19.5	42
All Industries	100.0	45.2	54.8	286.0	280.6	253.1	5.4	1.9	32.9	13.0	41

Source: ABS Labour Force Survey, Detailed, February 2023, four quarter averages. *Median age is from the ABS Census of Population and Housing, 2021.



Employment Region Industry profile

Hobart and Southern Tasmania Employment Region

Release date: 28 April 2023

Overview

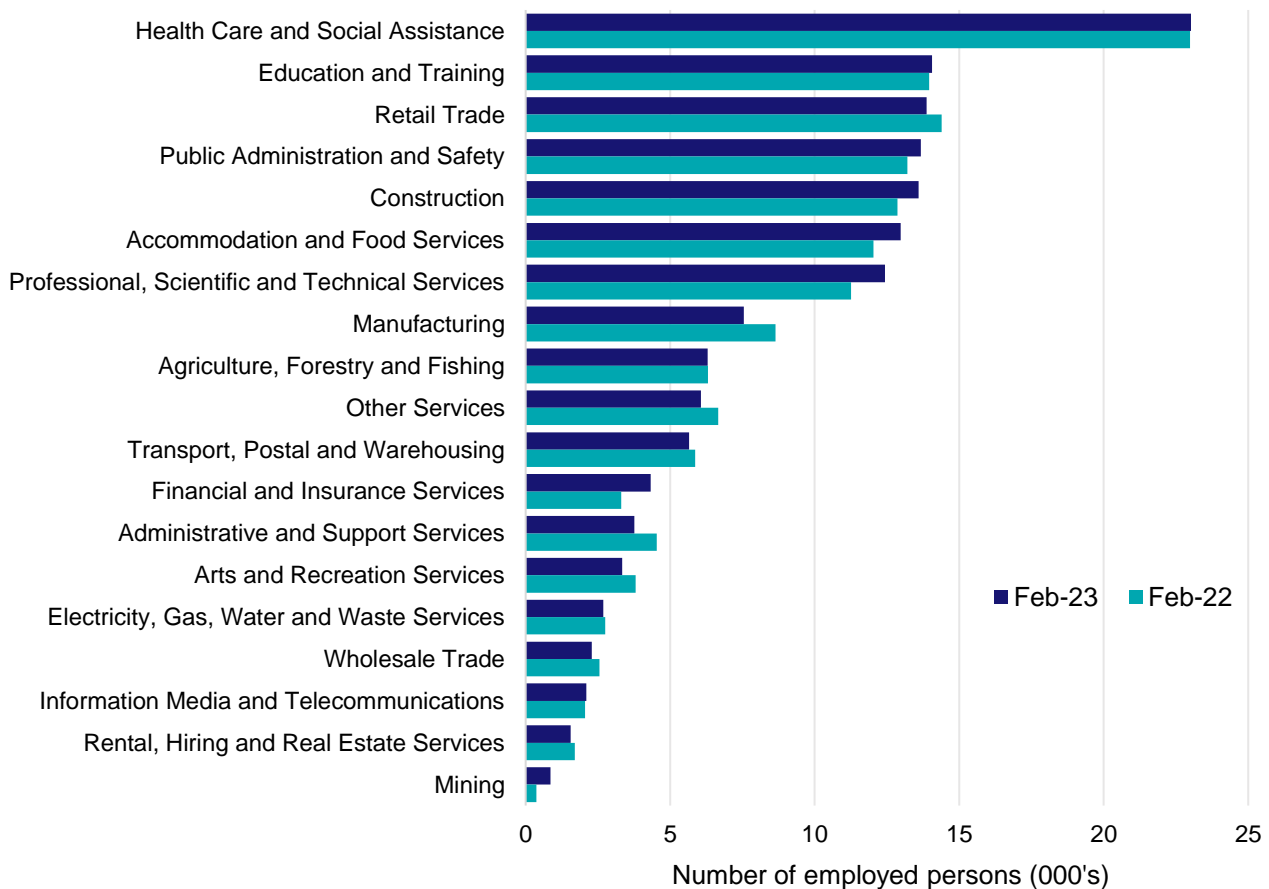
In February 2023, there were around 150,100 people employed in the Hobart and Southern Tasmania Employment Region. The 5 largest employing industries in the region were Health Care and Social Assistance, Education and Training, Retail Trade, Public Administration and Safety, and Construction. Together these 5 industries accounted for 52% of employment in the region.

Over the year to February 2023, employment in:

- Health Care and Social Assistance rose by 0.2% to stand at 23,000
- Education and Training rose by 0.7% to stand at 14,100
- Retail Trade fell by 3.6% to stand at 13,900.

In Health Care and Social Assistance in the Hobart and Southern Tasmania Employment Region, 52% of workers were employed part-time; 76% were female; and the median age of the workforce was 41.

Employment by industry, February 2023 and February 2022



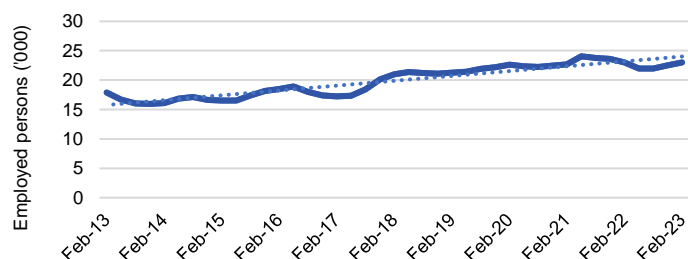
Source: ABS Labour Force Survey*, Detailed, four quarter averages, February 2023. Note that total employment for the region (four quarter averaged data) may not match data published in the Employment Region Labour Market dashboards (6 month averaged data).

*ABS Labour Force Survey data are based on the combined SA4s of Hobart and South East.

Notes: Data are the latest available. Estimates should be treated with caution, as data can be volatile at a regional level. For any enquiries related to the data in this report, please contact RegionalWorkforceAssessment@jobsandskills.gov.au

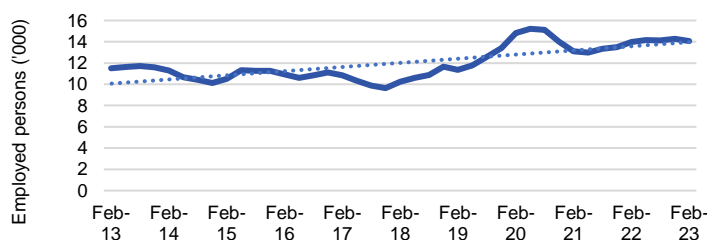
Five largest employing industries: key statistics

Health Care and Social Assistance



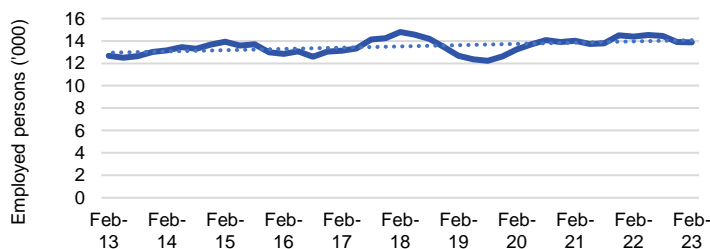
Number employed (Feb-23):	23,000
1 year employment change:	0.2%
5 year employment change:	9.5%
10 year employment change:	28.8%
Youth share of employment:	10.8%
Mature age share of employment:	18.6%

Education and Training



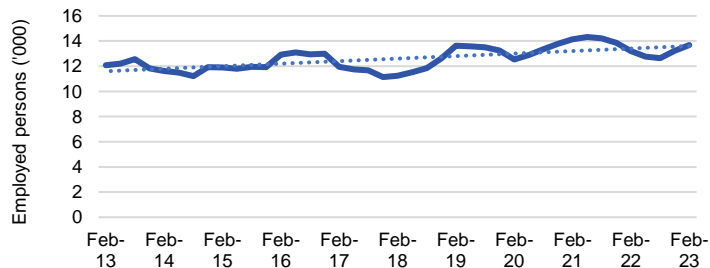
Number employed (Feb-23):	14,100
1 year employment change:	0.7%
5 year employment change:	37.4%
10 year employment change:	22.3%
Youth share of employment:	5.8%
Mature age share of employment:	11.8%

Retail Trade



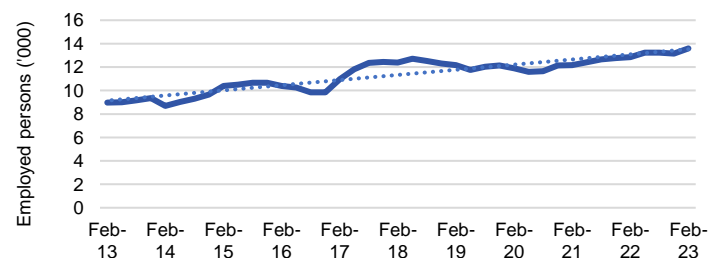
Number employed (Feb-23):	13,900
1 year employment change:	-3.6%
5 year employment change:	-6.3%
10 year employment change:	9.5%
Youth share of employment:	20.4%
Mature age share of employment:	6.9%

Public Administration and Safety



Number employed (Feb-23):	13,700
1 year employment change:	3.5%
5 year employment change:	21.7%
10 year employment change:	13.1%
Youth share of employment:	3.5%
Mature age share of employment:	10.6%

Construction



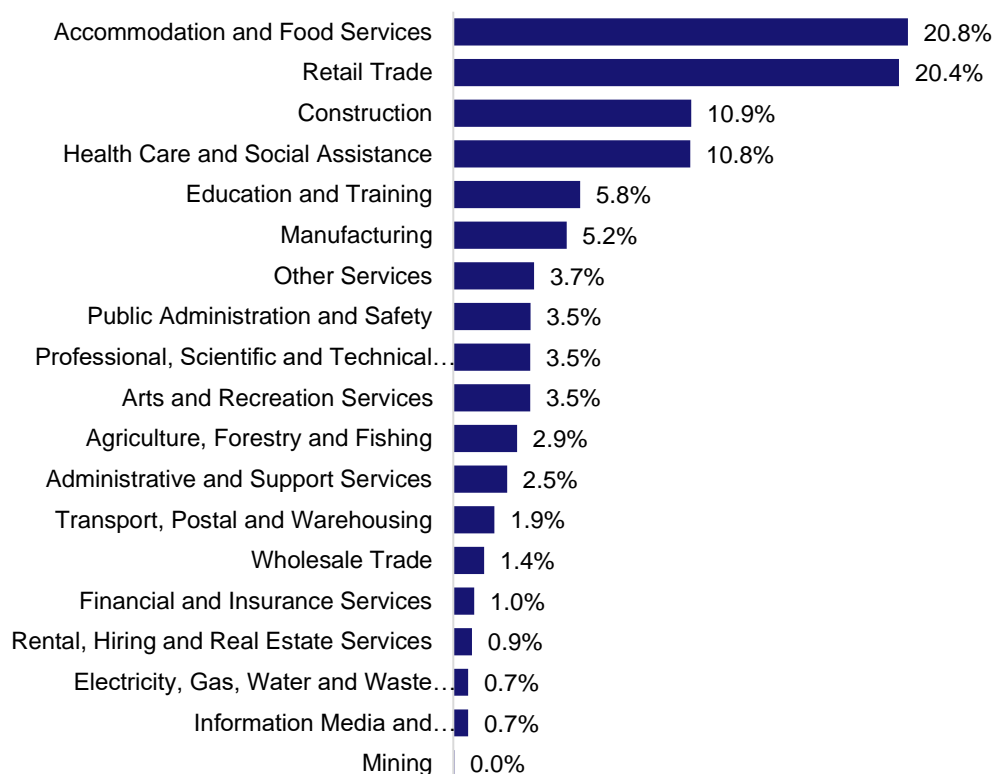
Number employed (Feb-23):	13,600
1 year employment change:	5.7%
5 year employment change:	9.8%
10 year employment change:	51.7%
Youth share of employment:	10.9%
Mature age share of employment:	8.0%

Source: ABS Labour Force Survey, Detailed, four quarter averages, February 2023, except youth and mature age data which are from the ABS Census of Population and Housing, 2021.

Note: In each chart, the solid line is the level of employment and the dotted line is a simple linear trend line for the 10 year period.

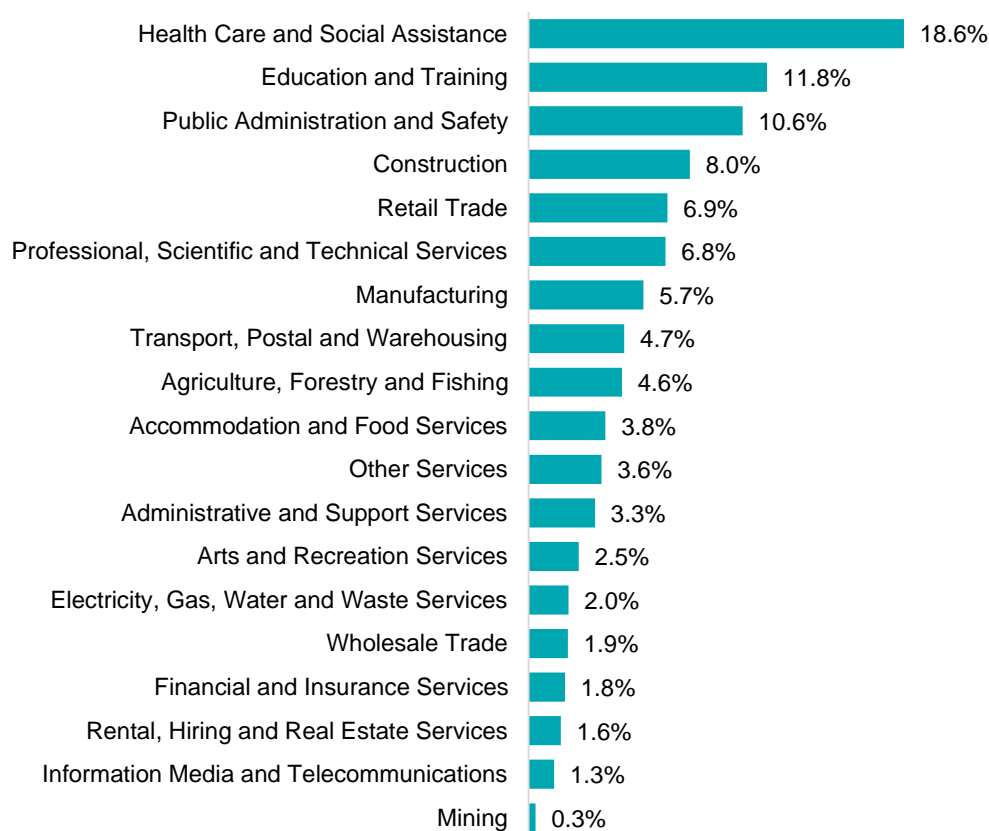
Employment characteristics by Industry

Which industries are youth (aged 15-24) employed in?



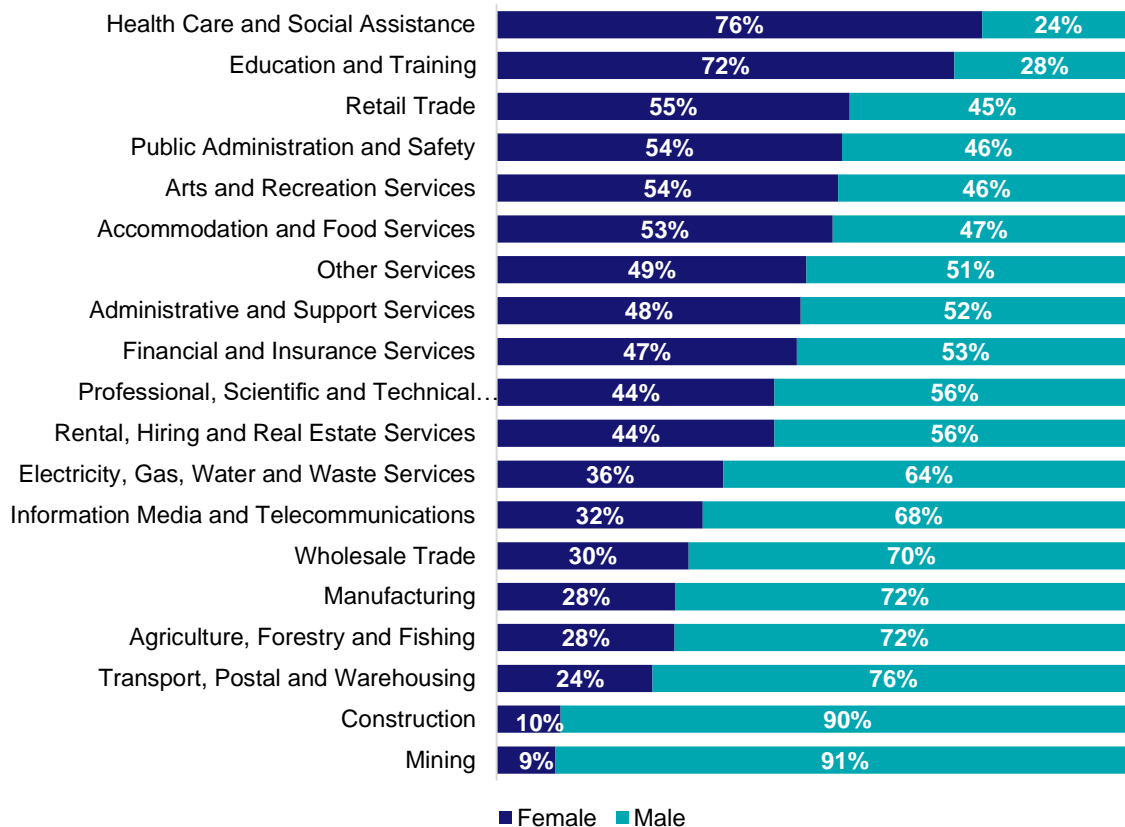
Source: ABS Census of Population and Housing, 2021.

Which industries are mature age persons (aged 55+) employed in?



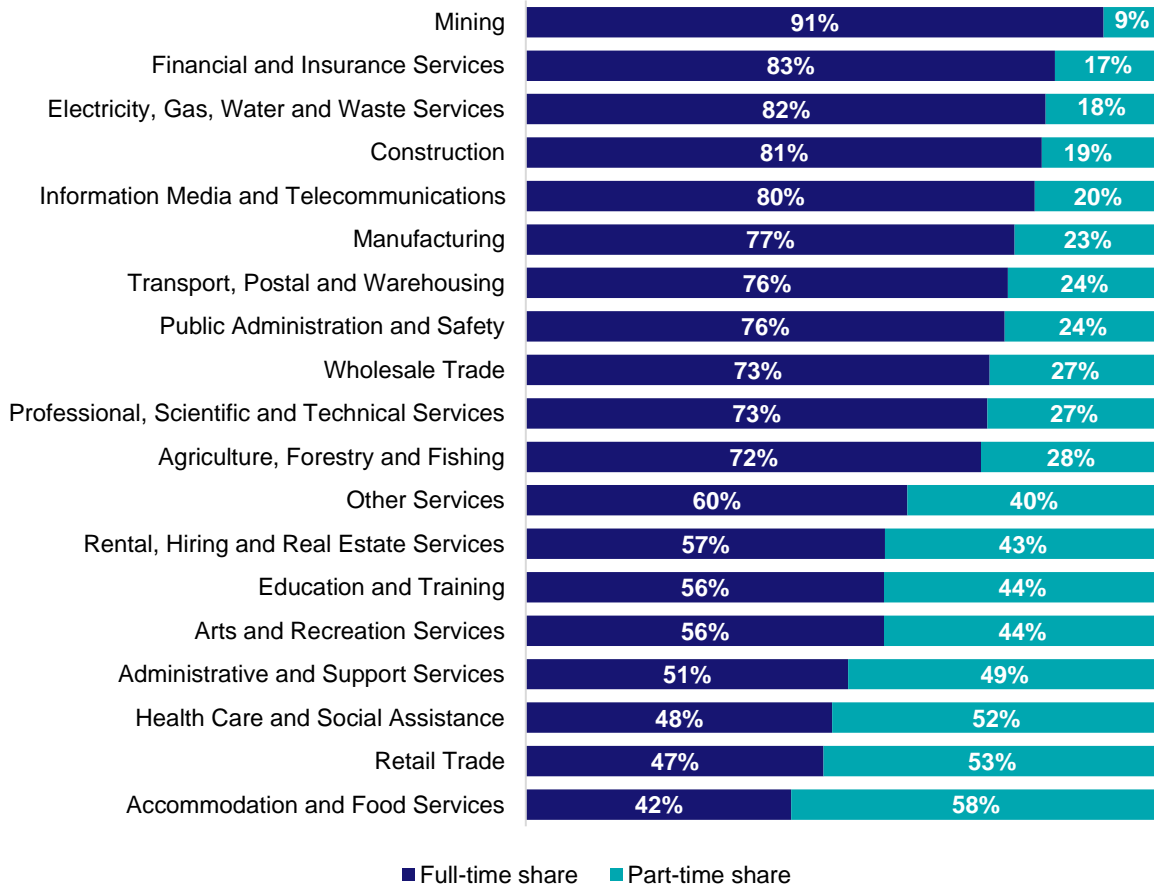
Source: ABS Census of Population and Housing, 2021. Note: SA2 level Census data have been aggregated to the Employment Region level.

Gender share by industry



Source: ABS Labour Force Survey, Detailed, four quarter averages, February 2023.

Full-time and part-time employment status by industry



Source: ABS Labour Force Survey, Detailed, four quarter averages, February 2023.

Appendix

Employment by industry, Hobart and Southern Tasmania, February 2023

Industry (in order of size)	Share of employment in the region Feb-23 (%)	Employed ('000)			1 year change		5 year change		Full-time share %	Part-time share %	Median age *
		Feb-23	Feb-22	Feb-18	('000)	%	('000)	%			
Health Care and Social Assistance	15.3	23.0	23.0	21.0	0.0	0.2	2.0	9.5	48.3	51.7	41
Education and Training	9.4	14.1	14.0	10.2	0.1	0.7	3.8	37.4	56.5	43.5	44
Retail Trade	9.2	13.9	14.4	14.8	-0.5	-3.6	-0.9	-6.3	46.9	53.1	32
Public Administration and Safety	9.1	13.7	13.2	11.2	0.5	3.5	2.4	21.7	75.5	24.5	45
Construction	9.1	13.6	12.9	12.4	0.7	5.7	1.2	9.8	81.4	18.6	38
Accommodation and Food Services	8.6	13.0	12.0	11.3	0.9	7.8	1.7	15.0	41.9	58.1	28
Professional, Scientific and Technical Services	8.3	12.4	11.3	7.7	1.2	10.4	4.7	61.0	72.8	27.2	41
Manufacturing	5.0	7.5	8.6	8.5	-1.1	-12.7	-1.0	-11.6	77.1	22.9	41
Agriculture, Forestry and Fishing	4.2	6.3	6.3	5.2	0.0	-0.2	1.1	21.8	71.8	28.2	42
Other Services	4.0	6.1	6.7	5.0	-0.6	-8.9	1.1	21.8	60.1	39.9	38
Transport, Postal and Warehousing	3.8	5.7	5.9	5.3	-0.2	-3.6	0.4	7.0	76.0	24.0	44
Financial and Insurance Services	2.9	4.3	3.3	3.1	1.0	30.5	1.3	41.3	83.4	16.6	40
Administrative and Support Services	2.5	3.8	4.5	3.2	-0.8	-17.3	0.5	16.9	50.8	49.2	41
Arts and Recreation Services	2.2	3.3	3.8	4.0	-0.5	-12.4	-0.6	-15.8	56.5	43.5	36
Electricity, Gas, Water and Waste Services	1.8	2.7	2.7	2.7	-0.1	-2.2	0.0	-1.2	82.0	18.0	42
Wholesale Trade	1.5	2.3	2.5	2.4	-0.3	-10.3	-0.1	-3.2	73.1	26.9	43
Information Media and Telecommunications	1.4	2.1	2.1	2.1	0.0	1.9	0.0	-1.1	80.3	19.7	39
Rental, Hiring and Real Estate Services	1.0	1.6	1.7	1.5	-0.1	-8.1	0.0	0.8	56.7	43.3	47
Mining	0.6	0.9	0.4	0.9	0.5	129.8	-0.1	-8.4	91.1	8.9	49
All industries	100.0	150.1	149.3	132.5	0.8	0.5	17.5	13.2	62.9	37.1	40

Source: ABS Labour Force Survey, Detailed, four quarter averages, February 2023. *Median age is from the ABS Census of Population and Housing, 2021. Median age has been derived using aggregated SA2s for the Employment Region.

Note: Small cells should be viewed with caution due to small sample sizes and regional volatility.



Employment Region Industry profile

North and North Western Tasmania Employment Region

Release date: 28 April 2023

Overview

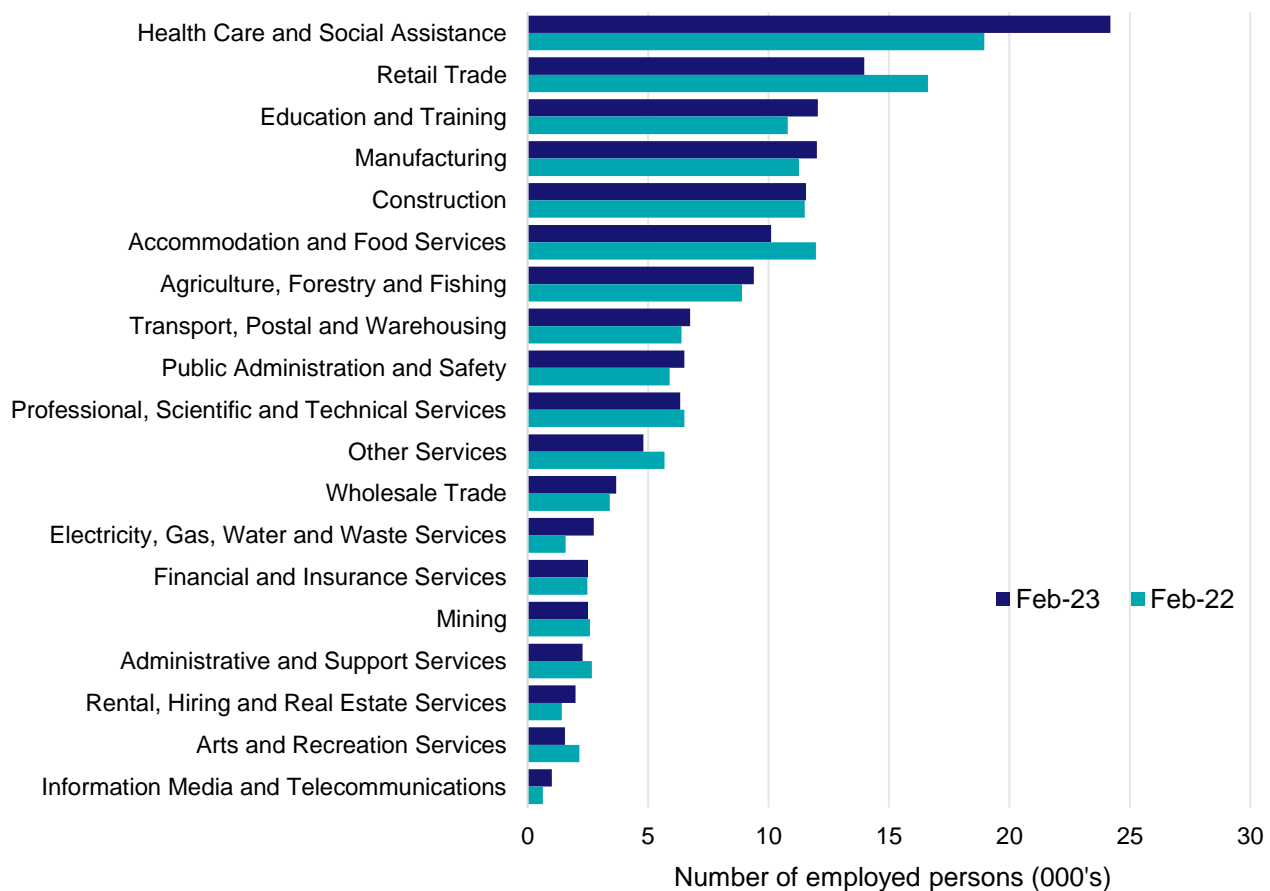
In February 2023, there were around 135,900 people employed in the North and North Western Tasmania Employment Region. The 5 largest employing industries in the region were Health Care and Social Assistance, Retail Trade, Education and Training, Manufacturing, and Construction. Together these 5 industries accounted for 54% of employment in the region.

Over the year to February 2023, employment in:

- Health Care and Social Assistance rose by 27.6% to stand at 24,200
- Retail Trade fell by 15.9% to stand at 14,000
- Education and Training rose by 11.5% to stand at 12,000.

In Health Care and Social Assistance in the North and North Western Tasmania Employment Region, 51% of workers were employed full-time; 76% were female; and the median age of the workforce was 44.

Employment by industry, February 2023 and February 2022



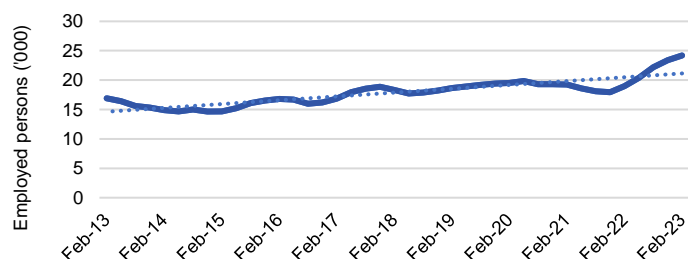
Source: ABS Labour Force Survey*, Detailed, four quarter averages, February 2023. Note that total employment for the region (four quarter averaged data) may not match data published in the Employment Region Labour Market dashboards (6 month averaged data).

*ABS Labour Force Survey data are based on the combined SA4s of Launceston and North East; and West and North West.

Notes: Data are the latest available. Estimates should be treated with caution, as data can be volatile at a regional level. For any enquiries related to the data in this report, please contact RegionalWorkforceAssessment@jobsandskills.gov.au

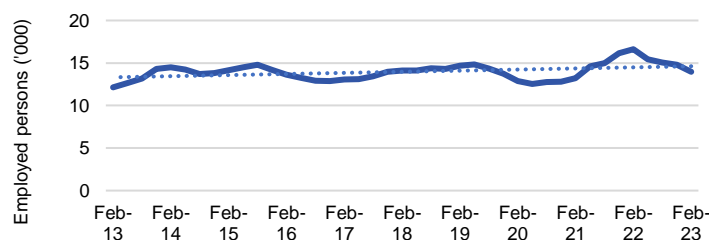
Five largest employing industries: key statistics

Health Care and Social Assistance



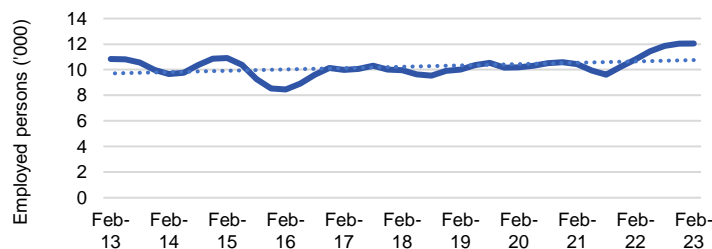
Number employed (Feb-23):	24,200
1 year employment change:	27.6%
5 year employment change:	32.2%
10 year employment change:	43.3%
Youth share of employment:	9.9%
Mature age share of employment:	18.6%

Retail Trade



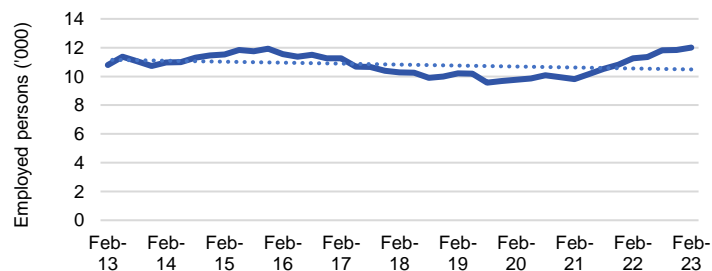
Number employed (Feb-23):	14,000
1 year employment change:	-15.9%
5 year employment change:	-1.1%
10 year employment change:	15.1%
Youth share of employment:	20.6%
Mature age share of employment:	8.0%

Education and Training



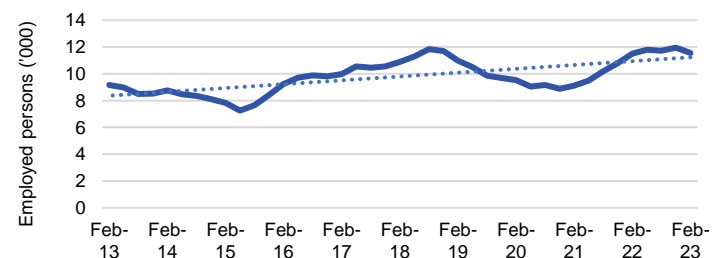
Number employed (Feb-23):	12,000
1 year employment change:	11.5%
5 year employment change:	20.9%
10 year employment change:	11.3%
Youth share of employment:	3.9%
Mature age share of employment:	9.8%

Manufacturing



Number employed (Feb-23):	12,000
1 year employment change:	6.6%
5 year employment change:	16.8%
10 year employment change:	11.2%
Youth share of employment:	6.8%
Mature age share of employment:	7.5%

Construction



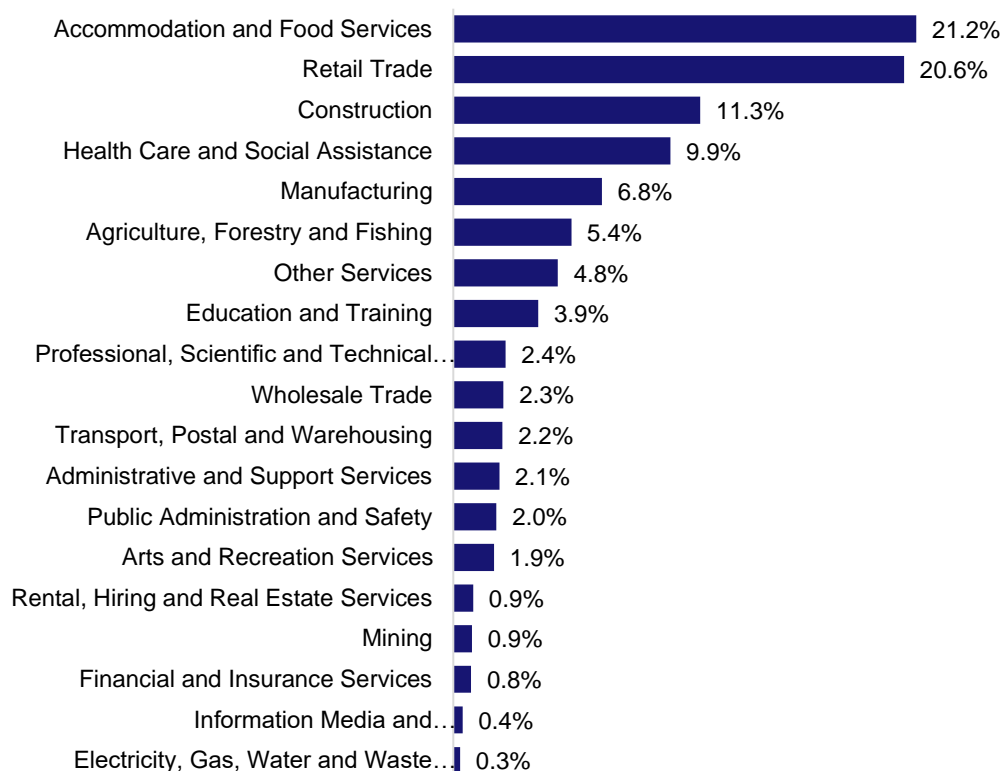
Number employed (Feb-23):	11,600
1 year employment change:	0.5%
5 year employment change:	6.1%
10 year employment change:	26.0%
Youth share of employment:	11.3%
Mature age share of employment:	7.7%

Source: ABS Labour Force Survey, Detailed, four quarter averages, February 2023, except youth and mature age data which are from the ABS Census of Population and Housing, 2021.

Note: In each chart, the solid line is the level of employment and the dotted line is a simple linear trend line for the 10 year period.

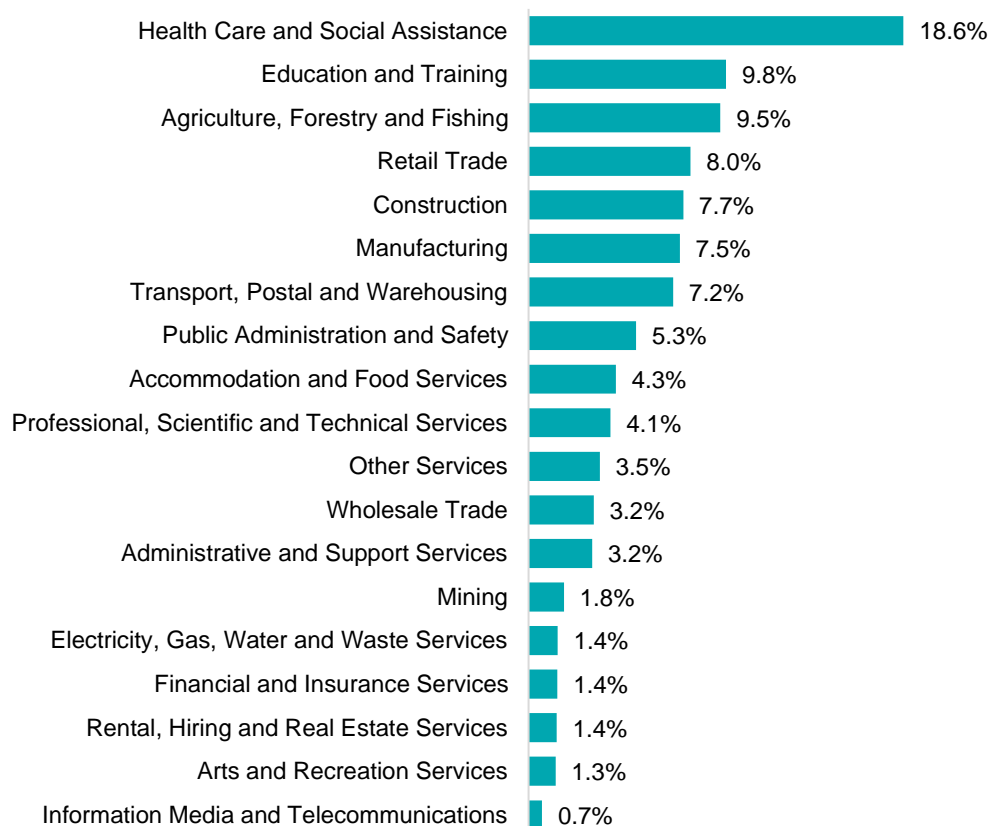
Employment characteristics by Industry

Which industries are youth (aged 15-24) employed in?



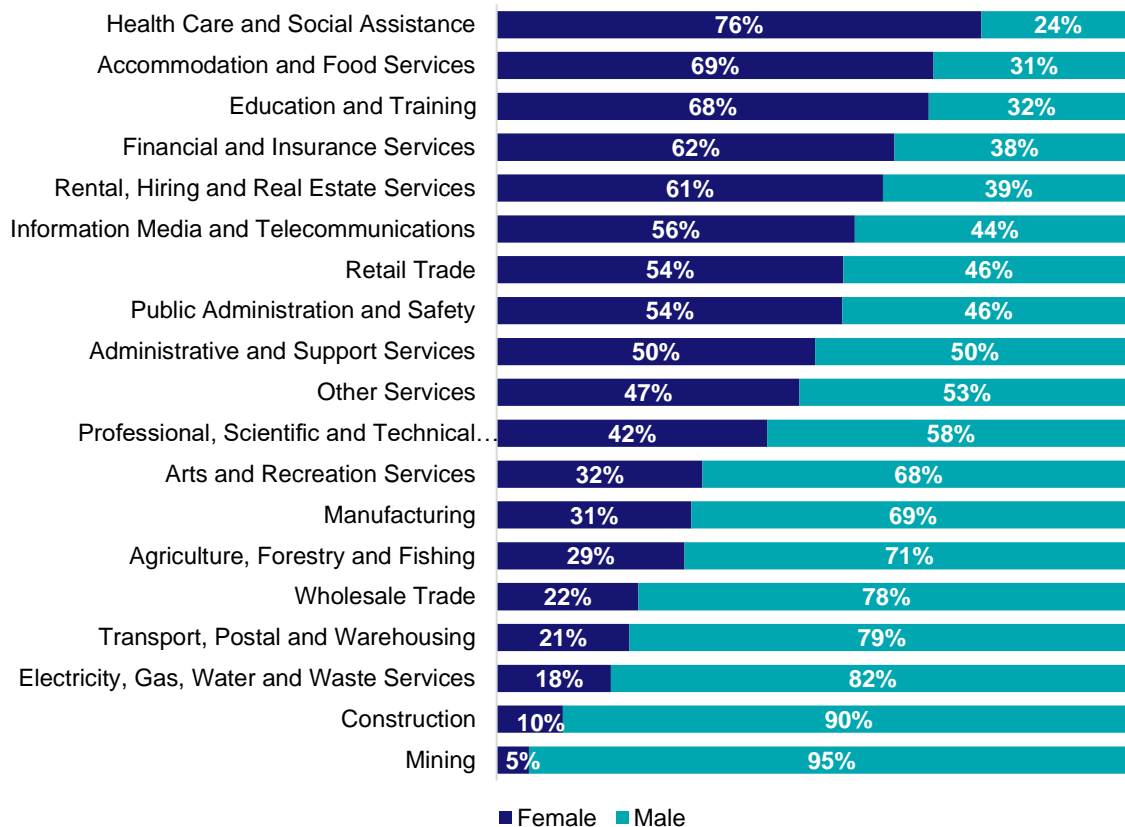
Source: ABS Census of Population and Housing, 2021.

Which industries are mature age persons (aged 55+) employed in?



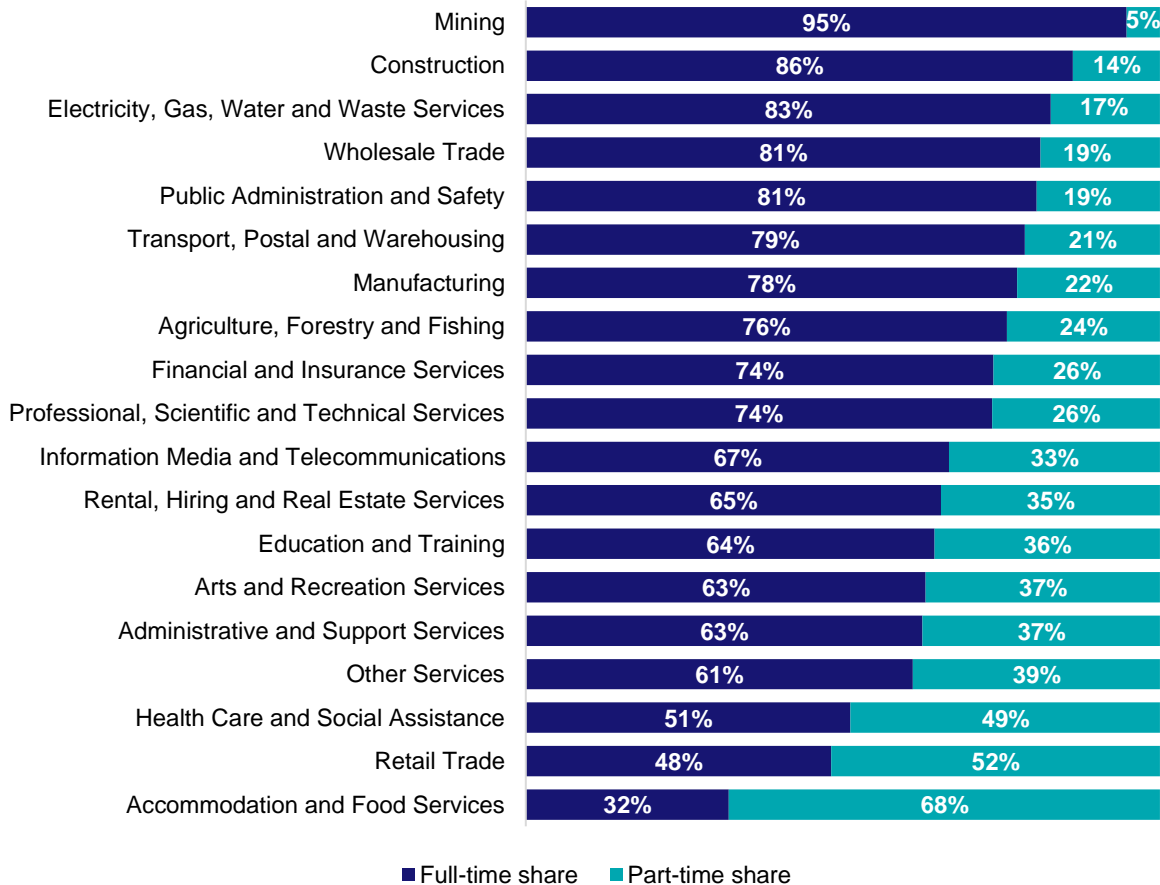
Source: ABS Census of Population and Housing, 2021. Note: SA2 level Census data have been aggregated to the Employment Region level.

Gender share by industry



Source: ABS Labour Force Survey, Detailed, four quarter averages, February 2023.

Full-time and part-time employment status by industry



Source: ABS Labour Force Survey, Detailed, four quarter averages, February 2023.

Appendix

Employment by industry, North and North Western Tasmania, February 2023

Industry (in order of size)	Share of employment in the region Feb-23 (%)	Employed ('000)			1 year change		5 year change		Full-time share %	Part-time share %	Median age *
		Feb-23	Feb-22	Feb-18	('000)	%	('000)	%			
Health Care and Social Assistance	17.8	24.2	19.0	18.3	5.2	27.6	5.9	32.2	51.2	48.8	44
Retail Trade	10.3	14.0	16.6	14.1	-2.6	-15.9	-0.2	-1.1	48.1	51.9	36
Education and Training	8.9	12.0	10.8	10.0	1.2	11.5	2.1	20.9	64.5	35.5	46
Manufacturing	8.8	12.0	11.3	10.3	0.7	6.6	1.7	16.8	77.5	22.5	42
Construction	8.5	11.6	11.5	10.9	0.1	0.5	0.7	6.1	86.3	13.7	38
Accommodation and Food Services	7.4	10.1	12.0	7.7	-1.9	-15.6	2.4	31.8	32.0	68.0	27
Agriculture, Forestry and Fishing	6.9	9.4	8.9	8.7	0.5	5.5	0.7	7.6	75.9	24.1	44
Transport, Postal and Warehousing	5.0	6.7	6.4	6.1	0.4	5.6	0.7	11.2	78.7	21.3	50
Public Administration and Safety	4.8	6.5	5.9	5.1	0.6	10.5	1.4	26.7	80.5	19.5	46
Professional, Scientific and Technical Services	4.7	6.3	6.5	4.2	-0.2	-2.6	2.1	49.3	73.5	26.5	42
Other Services	3.5	4.8	5.7	6.0	-0.9	-15.6	-1.2	-20.1	61.0	39.0	38
Wholesale Trade	2.7	3.7	3.4	2.5	0.3	7.7	1.2	48.0	81.1	18.9	46
Electricity, Gas, Water and Waste Services	2.0	2.8	1.6	1.4	1.2	75.2	1.3	93.7	82.8	17.2	46
Financial and Insurance Services	1.8	2.5	2.5	2.4	0.0	1.2	0.1	6.1	73.8	26.2	42
Mining	1.8	2.5	2.6	3.5	-0.1	-3.0	-1.0	-27.8	94.7	5.3	43
Administrative and Support Services	1.7	2.3	2.7	3.3	-0.4	-14.2	-1.0	-29.9	62.6	37.4	47
Rental, Hiring and Real Estate Services	1.5	2.0	1.4	1.9	0.6	39.3	0.1	5.8	65.4	34.6	43
Arts and Recreation Services	1.1	1.6	2.1	2.5	-0.6	-27.7	-1.0	-38.2	63.1	36.9	42
Information Media and Telecommunications	0.7	1.0	0.6	1.7	0.4	58.4	-0.7	-41.9	66.7	33.3	43
All industries	100.0	135.9	131.4	120.5	4.5	3.5	15.4	12.8	65.1	34.9	42

Source: ABS Labour Force Survey, Detailed, four quarter averages, February 2023. *Median age is from the ABS Census of Population and Housing, 2021. Median age has been derived using aggregated SA2s for the Employment Region.

Note: Small cells should be viewed with caution due to small sample sizes and regional volatility.