



# Industry profile

## South Australia

Release date: 28 April 2023

### Overview

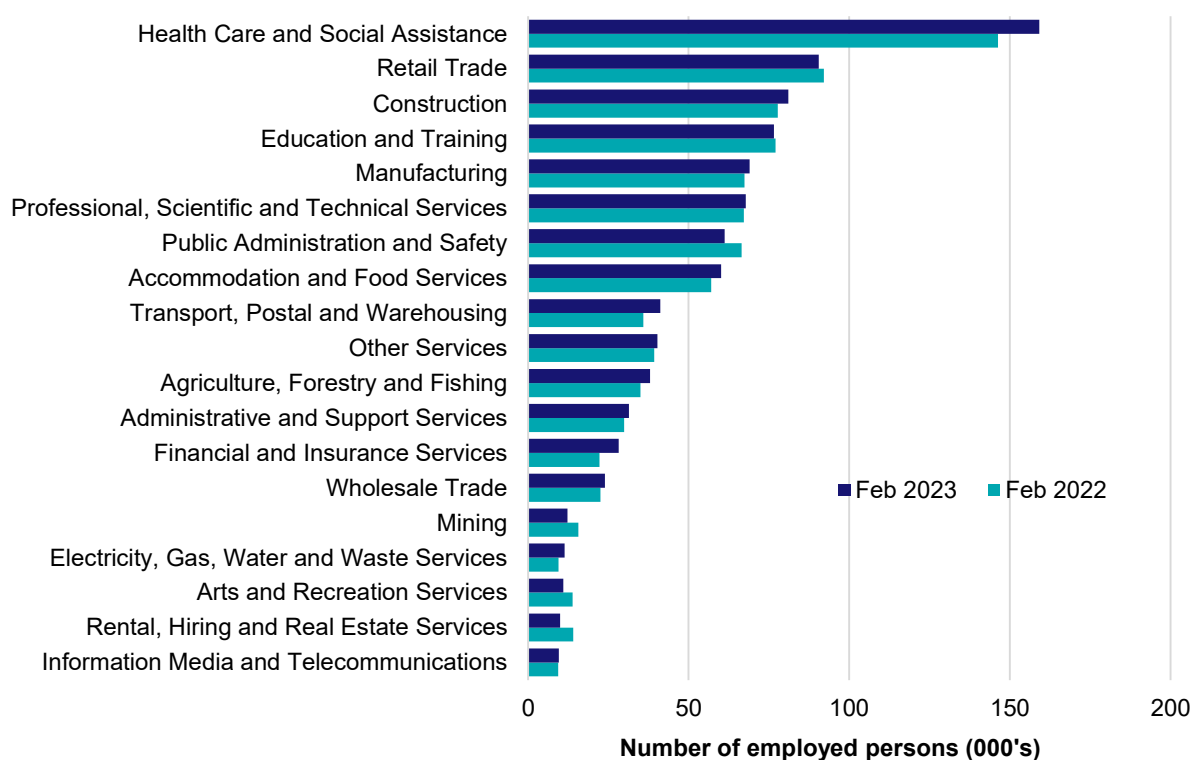
In February 2023, there were around 923,200 people employed in South Australia. The 5 largest employing industries in South Australia were Health Care and Social Assistance, Retail Trade, Construction, Education and Training and Manufacturing. Together these 5 industries accounted for 52% of all employment.

Over the year to February 2023, employment in:

- Health Care and Social Assistance rose by 8.8% to stand at 159,200
- Retail Trade fell by 1.7% to stand at 90,600
- Construction rose by 4.3% to stand at 81,100.

In Health Care and Social Assistance in South Australia, 52% of workers were employed full-time; 76% were Female; and the median age of the workforce was 42. Around 83% of employed persons in this industry were located in Greater Adelaide.

### Employment by industry, February 2023 and February 2022

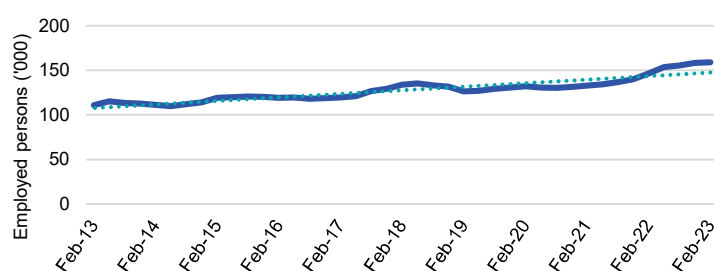


Source: ABS Labour Force Survey, Detailed, four quarter averages, February 2023. Note that total employment (four quarter averaged data) may not match data published in the Labour Market dashboards (6 month averaged data).

Note: For any enquiries related to the data in this report, contact [RegionalWorkforceAssessment@jobsandskills.gov.au](mailto:RegionalWorkforceAssessment@jobsandskills.gov.au)

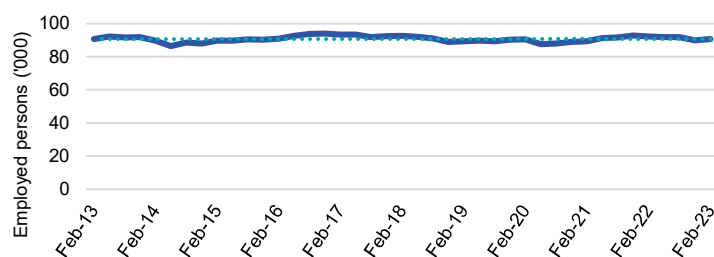
## Five largest employing industries: key statistics

### Health Care and Social Assistance



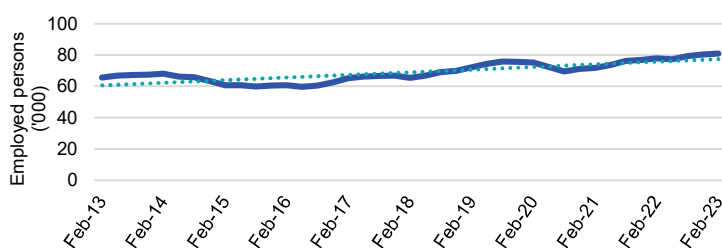
Number employed (Feb-23):	159,200
1 year employment change:	8.8%
5 year employment change:	18.9%
10 year employment change:	43.6%
Youth share of employment:	10.4%
Mature age share of employment:	18.5%

### Retail Trade



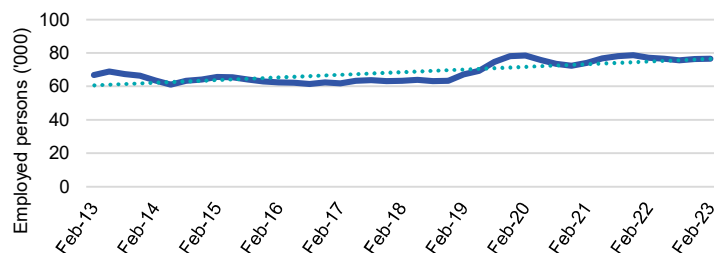
Number employed (Feb-23):	90,600
1 year employment change:	-1.7%
5 year employment change:	-2.1%
10 year employment change:	0.0%
Youth share of employment:	22.2%
Mature age share of employment:	7.5%

### Construction



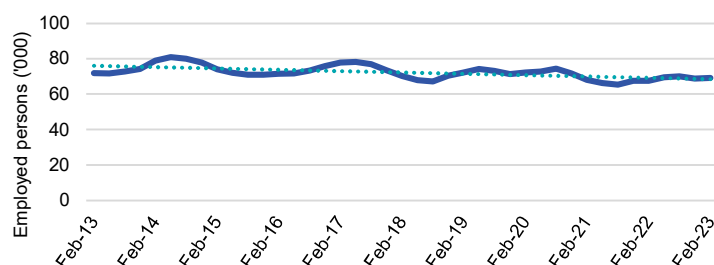
Number employed (Feb-23):	81,100
1 year employment change:	4.3%
5 year employment change:	24.0%
10 year employment change:	23.7%
Youth share of employment:	8.4%
Mature age share of employment:	7.6%

### Education and Training



Number employed (Feb-23):	76,600
1 year employment change:	-0.7%
5 year employment change:	21.1%
10 year employment change:	14.8%
Youth share of employment:	5.6%
Mature age share of employment:	9.9%

### Manufacturing



Number employed (Feb-23):	69,000
1 year employment change:	2.3%
5 year employment change:	-1.7%
10 year employment change:	-4.0%
Youth share of employment:	5.5%
Mature age share of employment:	8.1%

Source: ABS Labour Force Survey, Detailed, four quarter averages, February 2023, except youth and mature age data which are from the ABS Census of Population and Housing, 2021.

Note: In each chart, the solid line is the level of employment and the dotted line is a simple linear trend line for the 10 year period.

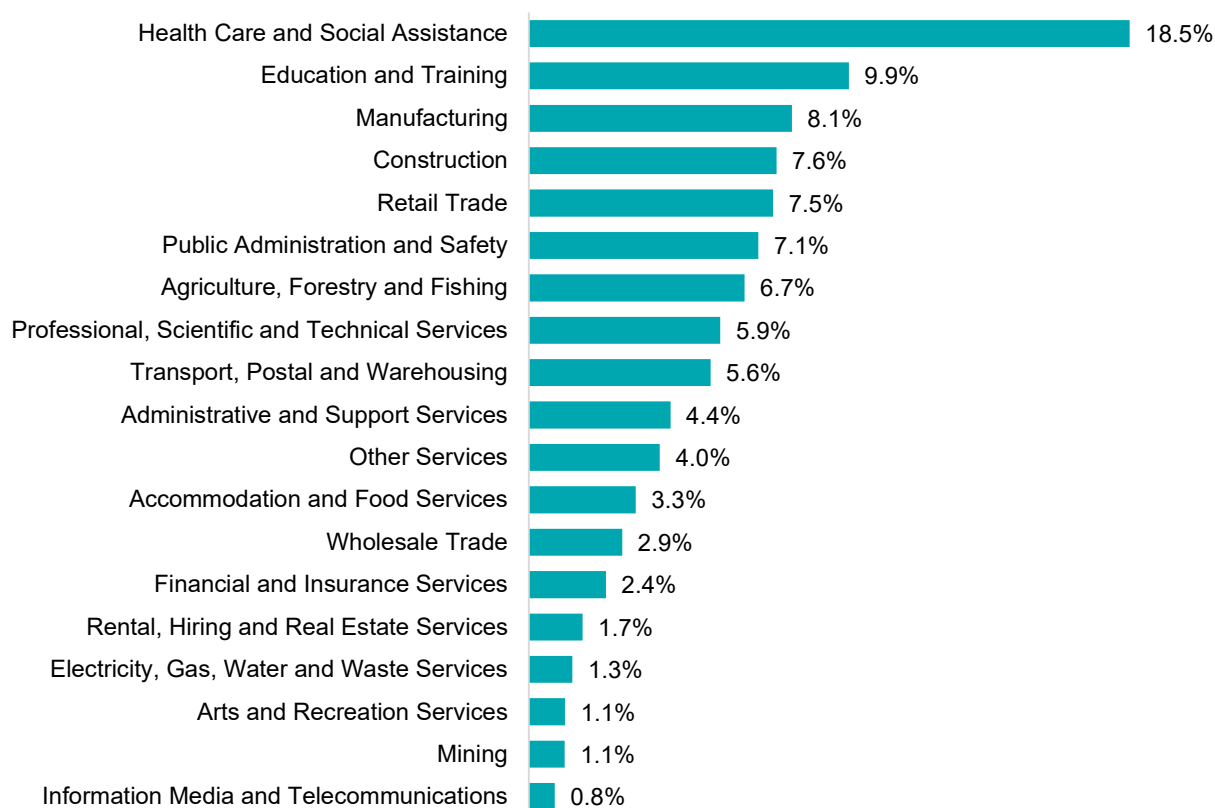
## Employment characteristics by Industry

### Which industries are youth (aged 15-24) employed in?



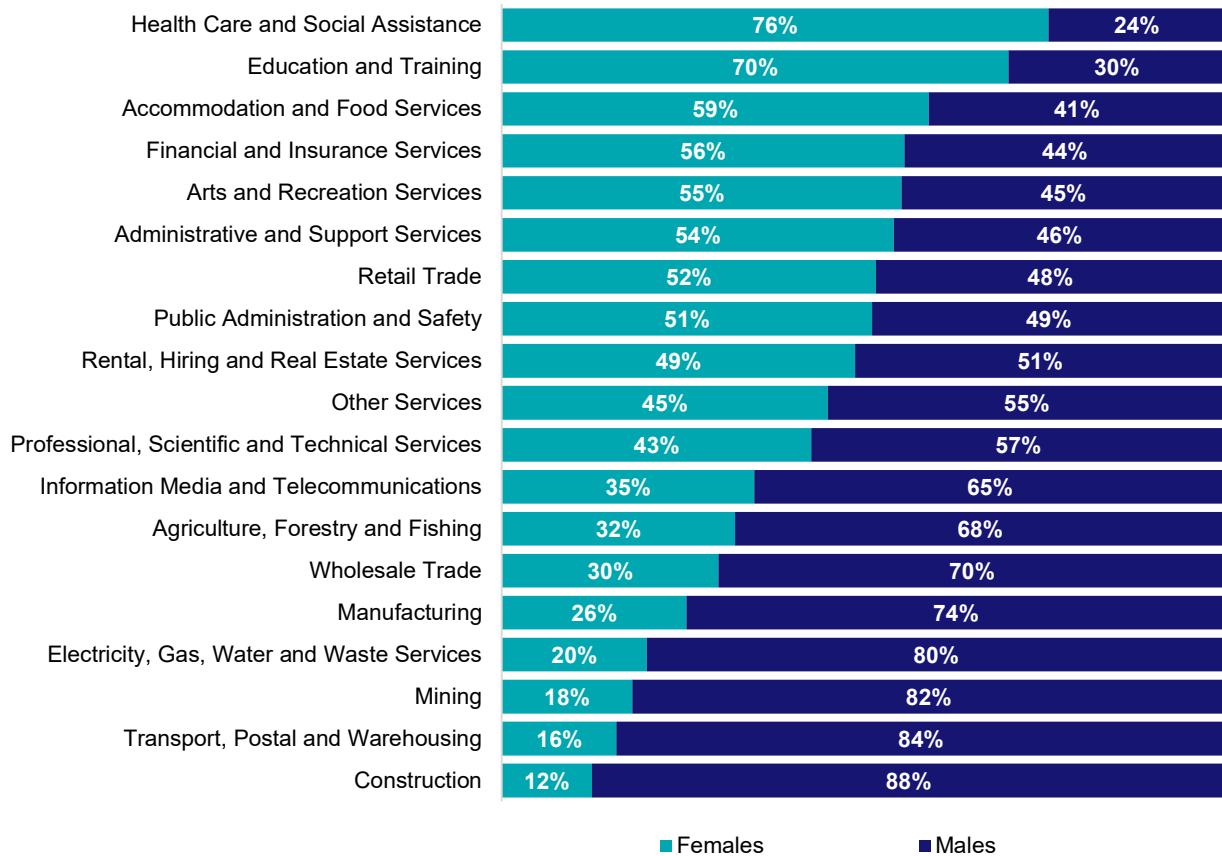
Source: ABS Census of Population and Housing, 2021.

### Which industries are mature age persons (aged 55+) employed in?



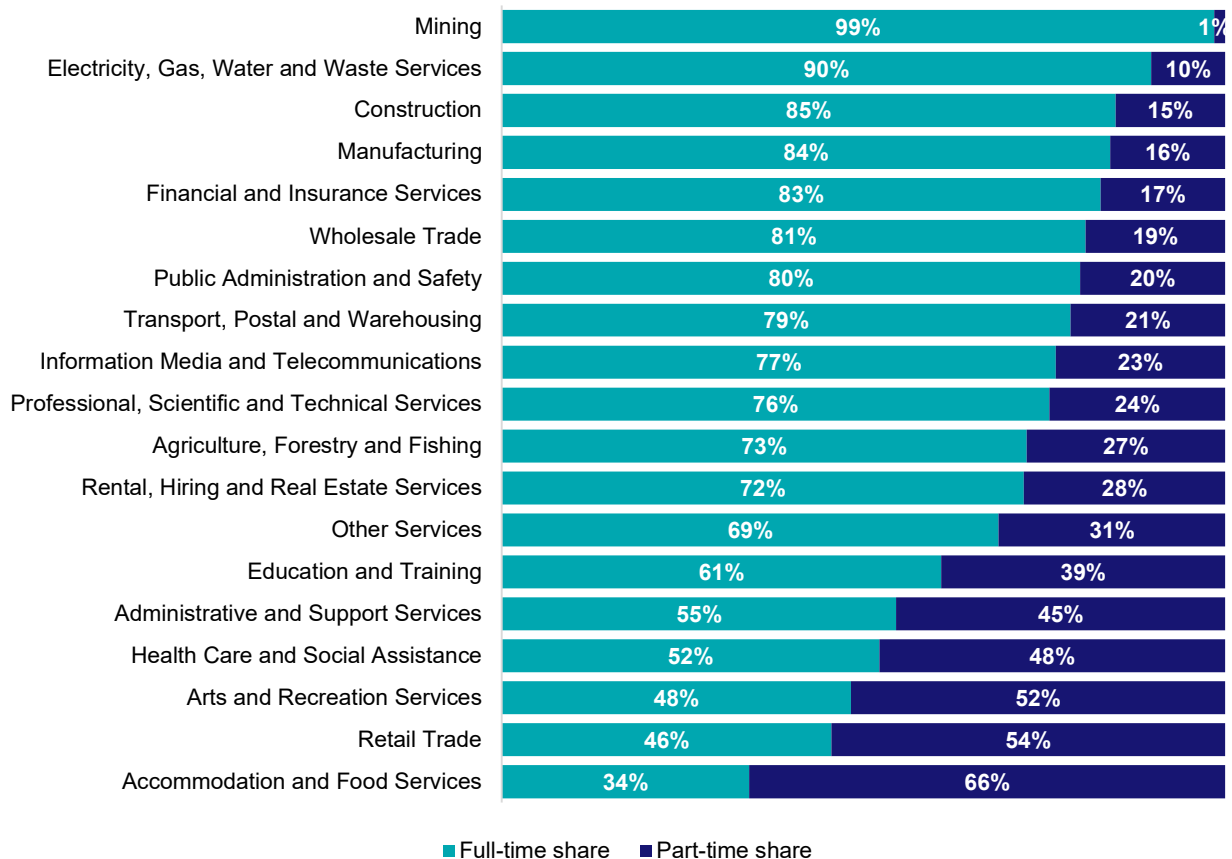
Source: ABS Census of Population and Housing, 2021.

## Gender share by industry



Source: ABS Labour Force Survey, Detailed, four quarter averages, February 2023.

## Full-time and part-time employment status by industry



Source: ABS Labour Force Survey, Detailed, four quarter averages, February 2023.

## Appendix

### Employment by industry, South Australia, February 2023

Industry (in order of size)	Share of emp't Feb-23 (%)	Share of emp't in Greater Adelaide (%)	Share of emp't in Rest of SA (%)	Employed ('000)			1 year change		5 year change		Median age *
				Feb-23	Feb-22	Feb-18	('000)	%	('000)	%	
Health Care and Social Assistance	17.2	82.6	17.4	159.2	146.3	133.9	12.9	8.8	25.3	18.9	42
Retail Trade	9.8	81.8	18.2	90.6	92.2	92.6	-1.6	-1.7	-2.0	-2.1	33
Construction	8.8	80.1	19.9	81.1	77.8	65.4	3.3	4.3	15.7	24.0	39
Education and Training	8.3	83.9	16.1	76.6	77.1	63.3	-0.5	-0.7	13.3	21.1	43
Manufacturing	7.5	75.3	24.7	69.0	67.4	70.2	1.6	2.3	-1.2	-1.7	44
Professional, Scientific and Technical Services	7.3	93.9	6.1	67.8	67.2	50.5	0.5	0.8	17.3	34.3	41
Public Administration and Safety	6.6	86.6	13.4	61.2	66.5	55.8	-5.3	-7.9	5.4	9.8	44
Accommodation and Food Services	6.5	80.9	19.1	60.2	57.1	52.6	3.1	5.5	7.6	14.4	26
Transport, Postal and Warehousing	4.5	78.4	21.6	41.2	35.9	42.6	5.3	14.6	-1.5	-3.4	45
Other Services	4.4	80.0	20.0	40.3	39.3	35.8	1.1	2.7	4.5	12.6	40
Agriculture, Forestry and Fishing	4.1	24.3	75.7	38.0	35.0	39.2	3.0	8.6	-1.1	-2.9	48
Administrative and Support Services	3.4	78.0	22.0	31.4	29.9	32.5	1.5	5.1	-1.0	-3.2	43
Financial and Insurance Services	3.1	90.5	9.5	28.3	22.3	21.5	6.0	26.9	6.7	31.3	42
Wholesale Trade	2.6	74.3	25.7	23.9	22.6	21.7	1.4	6.1	2.3	10.5	45
Mining	1.3	60.1	39.9	12.3	15.7	8.9	-3.4	-21.5	3.4	38.8	41
Electricity, Gas, Water and Waste Services	1.2	79.8	20.2	11.4	9.5	10.6	2.0	20.8	0.9	8.4	43
Arts and Recreation Services	1.2	84.0	16.0	11.0	13.9	15.5	-2.8	-20.4	-4.5	-29.0	35
Rental, Hiring and Real Estate Services	1.1	87.5	12.5	10.0	14.1	12.6	-4.2	-29.4	-2.6	-20.7	45
Information Media and Telecommunications	1.0	88.1	11.9	9.6	9.4	11.6	0.2	2.1	-2.0	-17.5	39
<b>All Industries</b>	<b>100.0</b>	<b>79.8</b>	<b>20.2</b>	<b>923.2</b>	<b>899.1</b>	<b>836.6</b>	<b>24.1</b>	<b>2.7</b>	<b>86.6</b>	<b>10.3</b>	<b>41</b>

Source: ABS Labour Force Survey, Detailed, February 2023, four quarter averages. \*Median age is from the ABS Census of Population and Housing, 2021.



# Employment Region Industry profile

## Adelaide North Employment Region

Release date: 28 April 2023

### Overview

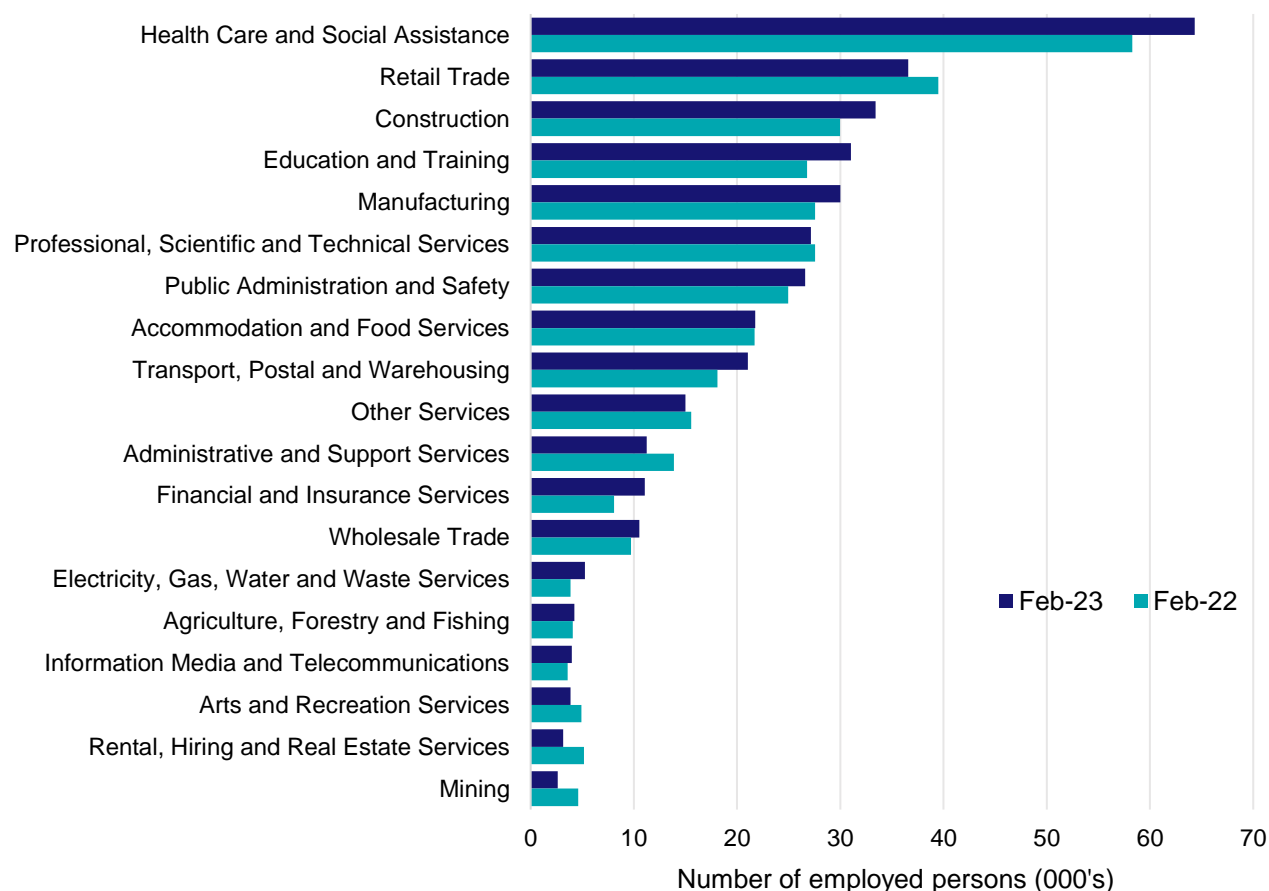
In February 2023, there were around 362,800 people employed in the Adelaide North Employment Region. The 5 largest employing industries in the region were Health Care and Social Assistance, Retail Trade, Construction, Education and Training, and Manufacturing. Together these 5 industries accounted for 54% of employment in the region.

Over the year to February 2023, employment in:

- Health Care and Social Assistance rose by 10.4% to stand at 64,300
- Retail Trade fell by 7.4% to stand at 36,600
- Construction rose by 11.5% to stand at 33,400.

In Health Care and Social Assistance in the Adelaide North Employment Region, 54% of workers were employed full-time; 74% were female; and the median age of the workforce was 40.

### Employment by industry, February 2023 and February 2022



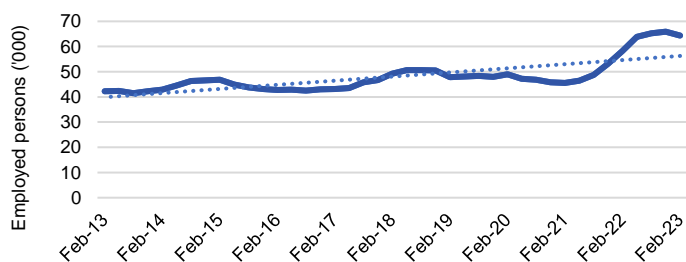
Source: ABS Labour Force Survey\*, Detailed, four quarter averages, February 2023. Note that total employment for the region (four quarter averaged data) may not match data published in the Employment Region Labour Market dashboards (6 month averaged data).

\*ABS Labour Force Survey data are based on the combined SA4s of Adelaide - North; and Adelaide - West.

Notes: Data are the latest available. Estimates should be treated with caution, as data can be volatile at a regional level. For any enquiries related to the data in this report, please contact [RegionalWorkforceAssessment@jobsandskills.gov.au](mailto:RegionalWorkforceAssessment@jobsandskills.gov.au)

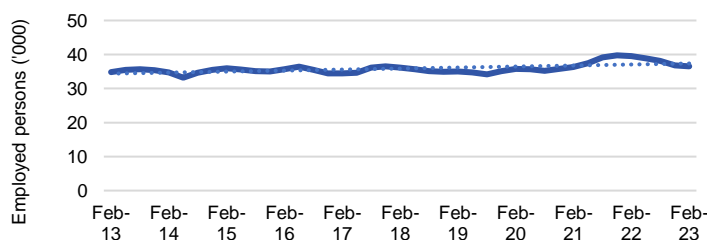
# Five largest employing industries: key statistics

## Health Care and Social Assistance



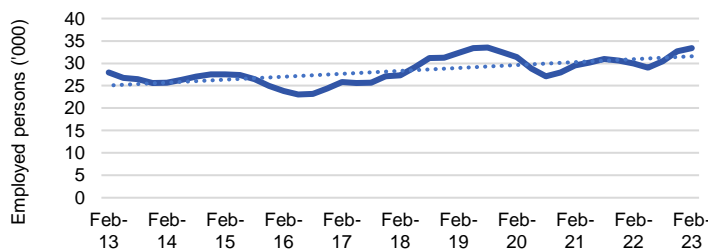
Number employed (Feb-23):	64,300
1 year employment change:	10.4%
5 year employment change:	30.7%
10 year employment change:	52.0%
Youth share of employment:	10.8%
Mature age share of employment:	18.2%

## Retail Trade



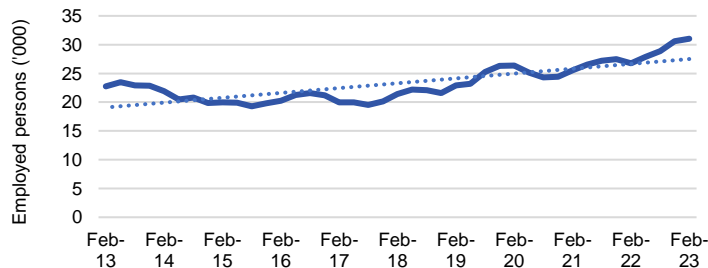
Number employed (Feb-23):	36,600
1 year employment change:	-7.4%
5 year employment change:	1.2%
10 year employment change:	4.9%
Youth share of employment:	22.5%
Mature age share of employment:	8.1%

## Construction



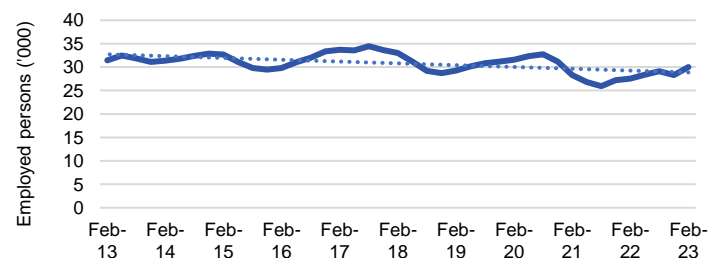
Number employed (Feb-23):	33,400
1 year employment change:	11.5%
5 year employment change:	22.2%
10 year employment change:	19.5%
Youth share of employment:	8.6%
Mature age share of employment:	8.4%

## Education and Training



Number employed (Feb-23):	31,000
1 year employment change:	15.9%
5 year employment change:	45.0%
10 year employment change:	36.5%
Youth share of employment:	5.3%
Mature age share of employment:	9.2%

## Manufacturing



Number employed (Feb-23):	30,000
1 year employment change:	8.8%
5 year employment change:	-9.1%
10 year employment change:	-4.7%
Youth share of employment:	5.0%
Mature age share of employment:	9.8%

Source: ABS Labour Force Survey, Detailed, four quarter averages, February 2023, except youth and mature age data which are from the ABS Census of Population and Housing, 2021.

Note: In each chart, the solid line is the level of employment and the dotted line is a simple linear trend line for the 10 year period.

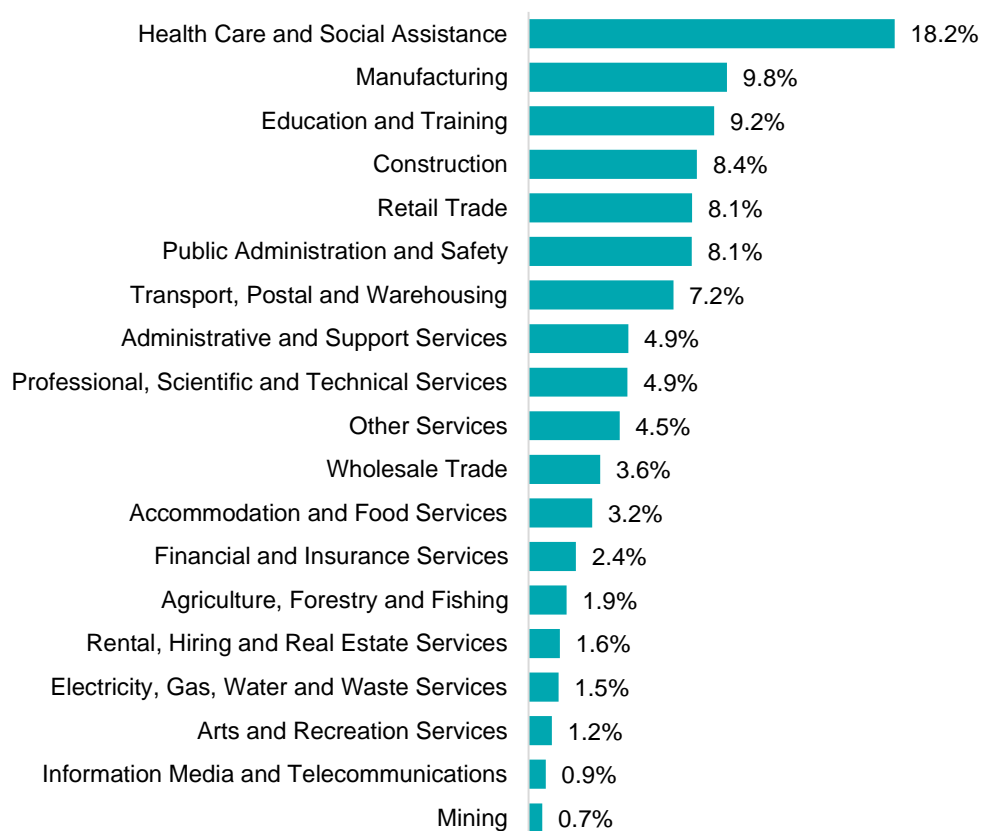
## Employment characteristics by Industry

### Which industries are youth (aged 15-24) employed in?



Source: ABS Census of Population and Housing, 2021.

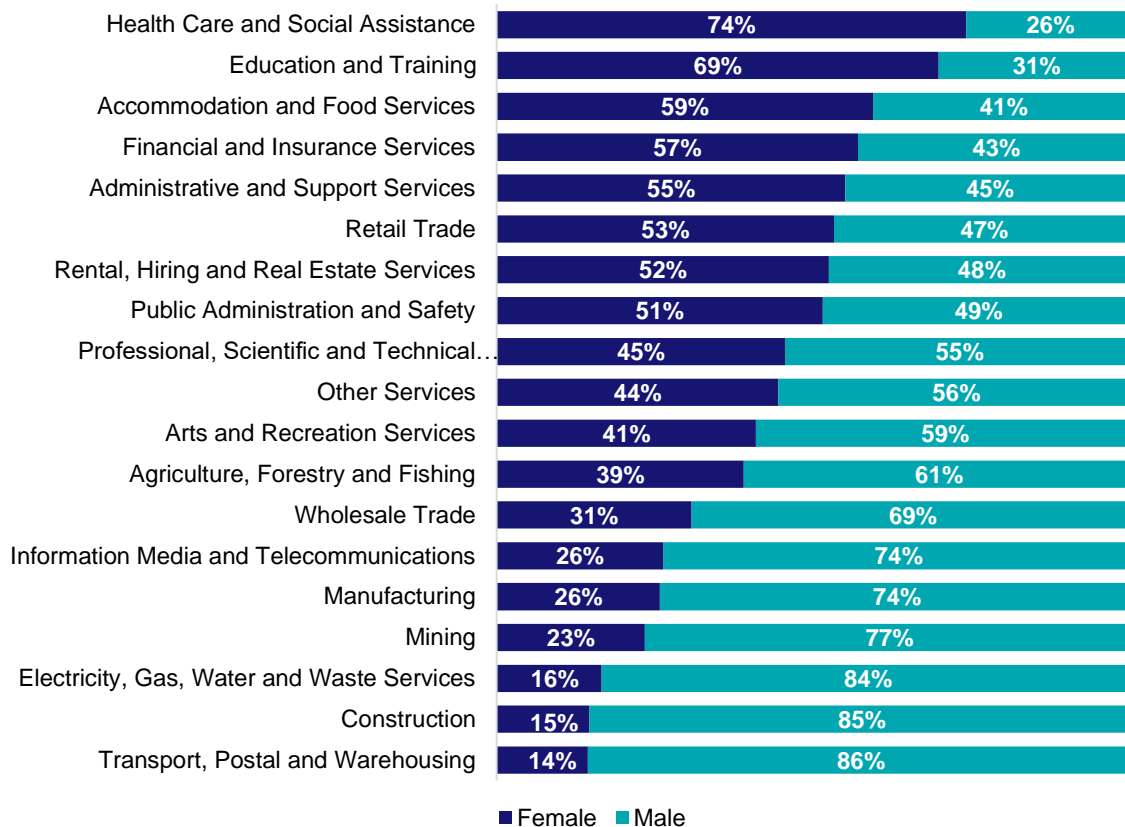
### Which industries are mature age persons (aged 55+) employed in?



Source: ABS Census of Population and Housing, 2021. Note: SA2 level Census data have been aggregated to the Employment Region level.

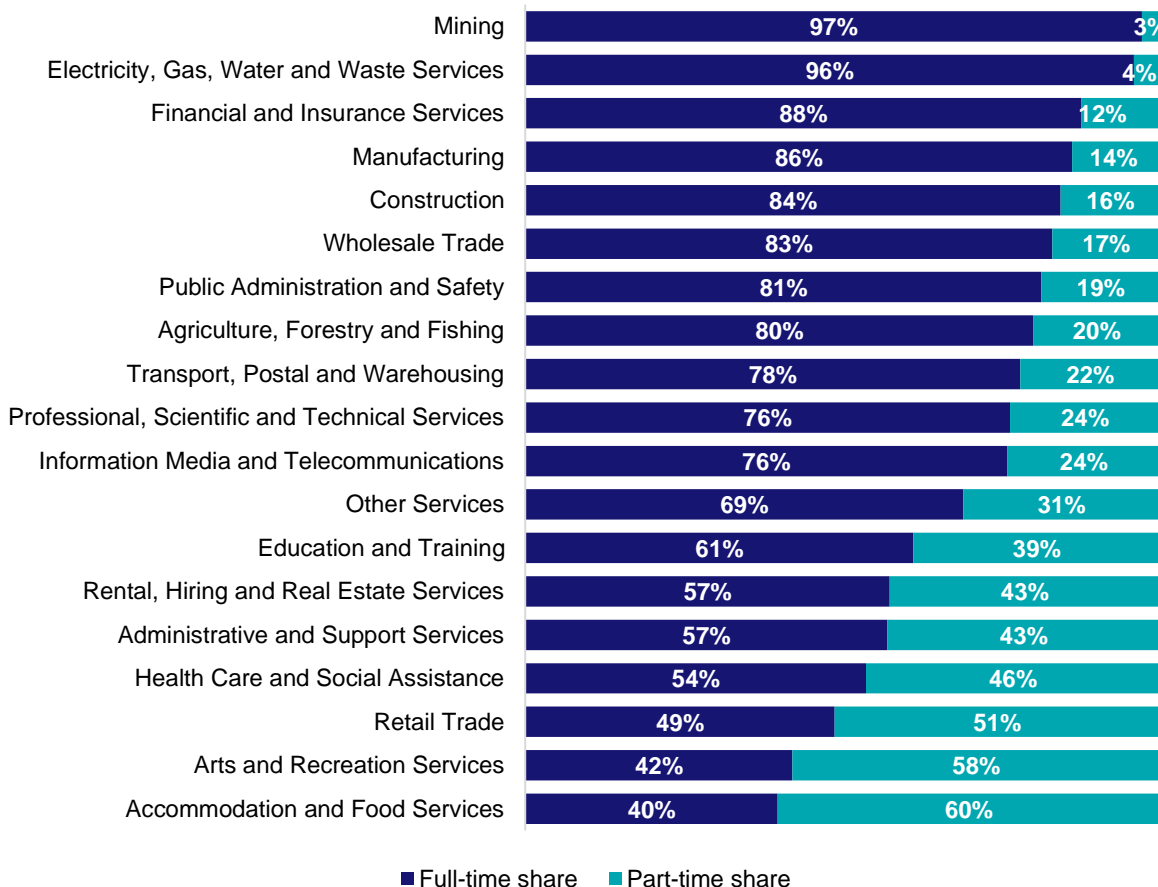


## Gender share by industry



Source: ABS Labour Force Survey, Detailed, four quarter averages, February 2023.

## Full-time and part-time employment status by industry



Source: ABS Labour Force Survey, Detailed, four quarter averages, February 2023.

## Appendix

### Employment by industry, Adelaide North, February 2023

Industry (in order of size)	Share of employment in the region Feb-23 (%)	Employed ('000)			1 year change		5 year change		Full-time share %	Part-time share %	Median age *
		Feb-23	Feb-22	Feb-18	('000)	%	('000)	%			
Health Care and Social Assistance	17.7	64.3	58.3	49.2	6.1	10.4	15.1	30.7	53.7	46.3	40
Retail Trade	10.1	36.6	39.5	36.1	-2.9	-7.4	0.4	1.2	48.8	51.2	32
Construction	9.2	33.4	30.0	27.3	3.5	11.5	6.1	22.2	84.4	15.6	38
Education and Training	8.6	31.0	26.8	21.4	4.3	15.9	9.6	45.0	61.2	38.8	41
Manufacturing	8.3	30.0	27.6	33.0	2.4	8.8	-3.0	-9.1	86.2	13.8	43
Professional, Scientific and Technical Services	7.5	27.2	27.5	16.6	-0.4	-1.4	10.5	63.2	76.4	23.6	38
Public Administration and Safety	7.3	26.6	25.0	22.0	1.6	6.5	4.6	20.8	81.4	18.6	42
Accommodation and Food Services	6.0	21.8	21.7	17.6	0.1	0.3	4.1	23.3	39.8	60.2	26
Transport, Postal and Warehousing	5.8	21.0	18.1	19.6	2.9	16.3	1.5	7.5	78.0	22.0	42
Other Services	4.1	15.0	15.6	15.2	-0.6	-3.5	-0.2	-1.3	69.0	31.0	38
Administrative and Support Services	3.1	11.3	13.9	13.9	-2.6	-18.9	-2.6	-18.9	57.1	42.9	40
Financial and Insurance Services	3.0	11.1	8.1	9.0	3.0	36.9	2.0	22.6	87.6	12.4	39
Wholesale Trade	2.9	10.5	9.7	8.4	0.8	8.4	2.2	26.1	83.1	16.9	43
Electricity, Gas, Water and Waste Services	1.4	5.3	3.9	5.1	1.4	35.8	0.2	3.9	95.9	4.1	41
Agriculture, Forestry and Fishing	1.2	4.2	4.1	4.1	0.1	3.6	0.1	2.7	80.1	19.9	44
Information Media and Telecommunications	1.1	4.0	3.6	5.9	0.4	11.3	-1.9	-31.9	76.0	24.0	38
Arts and Recreation Services	1.1	3.9	4.9	4.6	-1.1	-21.6	-0.8	-16.9	42.1	57.9	31
Rental, Hiring and Real Estate Services	0.9	3.2	5.2	4.3	-2.0	-38.8	-1.2	-27.2	57.4	42.6	41
Mining	0.7	2.6	4.6	2.2	-2.0	-43.3	0.4	20.4	97.2	2.8	37
<b>All industries</b>	<b>100.0</b>	<b>362.8</b>	<b>347.8</b>	<b>315.6</b>	<b>15.0</b>	<b>4.3</b>	<b>47.2</b>	<b>15.0</b>	<b>67.7</b>	<b>32.3</b>	<b>39</b>

Source: ABS Labour Force Survey, Detailed, four quarter averages, February 2023. \*Median age is from the ABS Census of Population and Housing, 2021. Median age has been derived using aggregated SA2s for the Employment Region.

Note: Small cells should be viewed with caution due to small sample sizes and regional volatility.



# Employment Region Industry profile

## Adelaide South Employment Region

Release date: 28 April 2023

### Overview

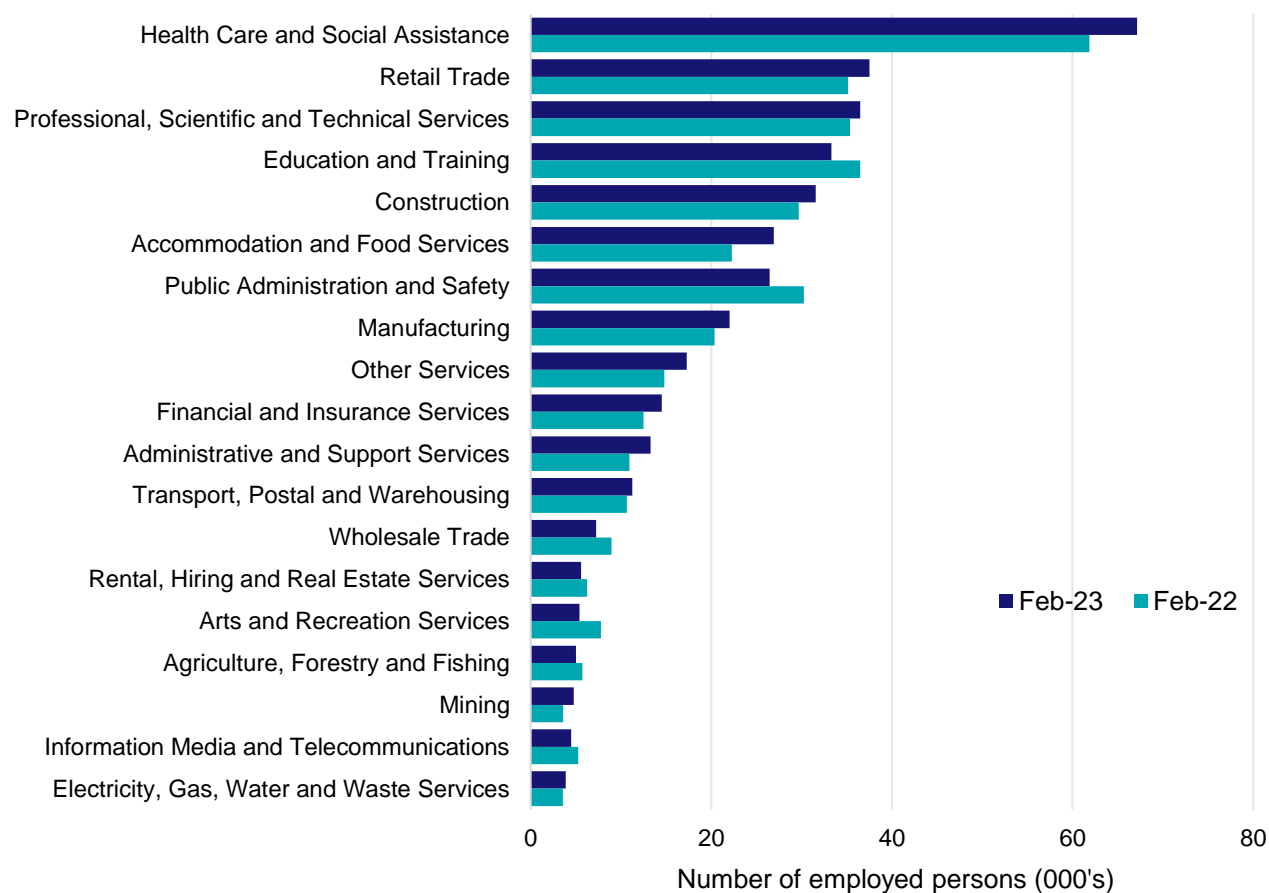
In February 2023, there were around 374,000 people employed in the Adelaide South Employment Region. The 5 largest employing industries in the region were Health Care and Social Assistance, Retail Trade, Professional, Scientific and Technical Services, Education and Training, and Construction. Together these 5 industries accounted for 55% of employment in the region.

Over the year to February 2023, employment in:

- Health Care and Social Assistance rose by 8.5% to stand at 67,100
- Retail Trade rose by 6.8% to stand at 37,500
- Professional, Scientific and Technical Services rose by 3.2% to stand at 36,500.

In Health Care and Social Assistance in the Adelaide South Employment Region, 52% of workers were employed full-time; 75% were female; and the median age of the workforce was 43.

### Employment by industry, February 2023 and February 2022



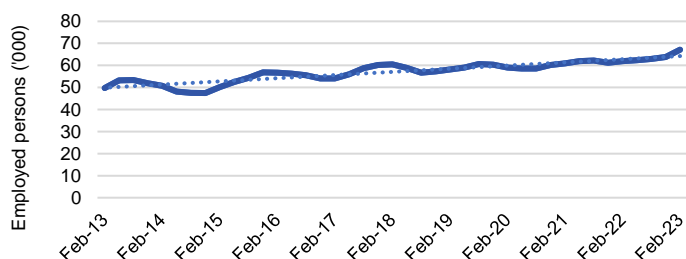
Source: ABS Labour Force Survey\*, Detailed, four quarter averages, February 2023. Note that total employment for the region (four quarter averaged data) may not match data published in the Employment Region Labour Market dashboards (6 month averaged data).

\*ABS Labour Force Survey data are based on the combined SA4s of Adelaide - Central and Hills; and Adelaide - South.

Notes: Data are the latest available. Estimates should be treated with caution, as data can be volatile at a regional level. For any enquiries related to the data in this report, please contact [RegionalWorkforceAssessment@jobsandskills.gov.au](mailto:RegionalWorkforceAssessment@jobsandskills.gov.au)

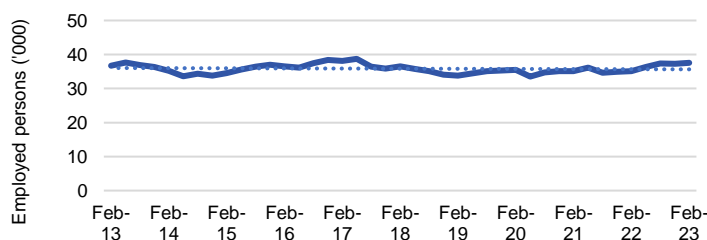
# Five largest employing industries: key statistics

## Health Care and Social Assistance



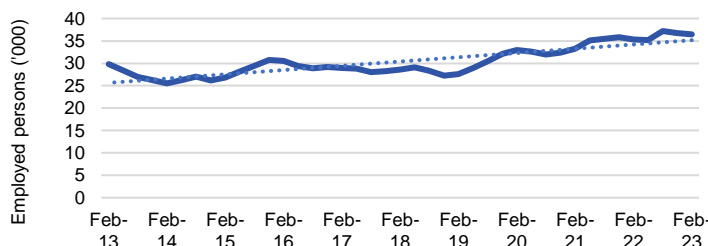
Number employed (Feb-23):	67,100
1 year employment change:	8.5%
5 year employment change:	11.0%
10 year employment change:	35.0%
Youth share of employment:	10.6%
Mature age share of employment:	20.6%

## Retail Trade



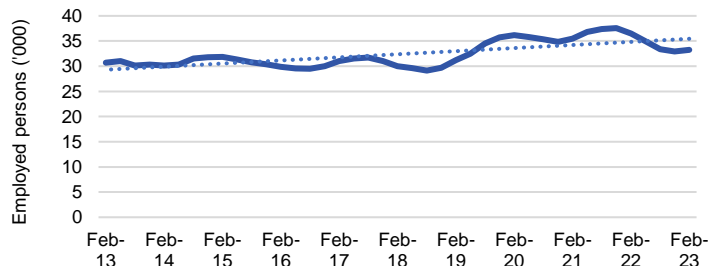
Number employed (Feb-23):	37,500
1 year employment change:	6.8%
5 year employment change:	2.8%
10 year employment change:	2.1%
Youth share of employment:	22.9%
Mature age share of employment:	7.1%

## Professional, Scientific and Technical Services



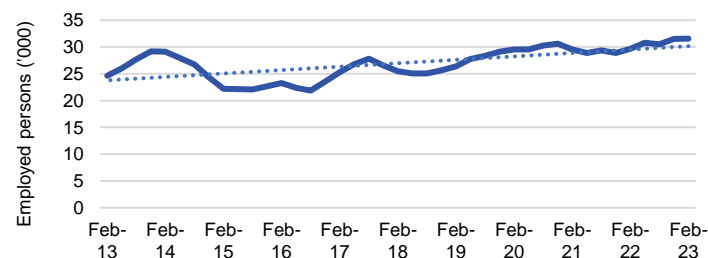
Number employed (Feb-23):	36,500
1 year employment change:	3.2%
5 year employment change:	27.4%
10 year employment change:	22.3%
Youth share of employment:	4.3%
Mature age share of employment:	8.3%

## Education and Training



Number employed (Feb-23):	33,300
1 year employment change:	-8.8%
5 year employment change:	11.0%
10 year employment change:	8.3%
Youth share of employment:	6.3%
Mature age share of employment:	11.6%

## Construction



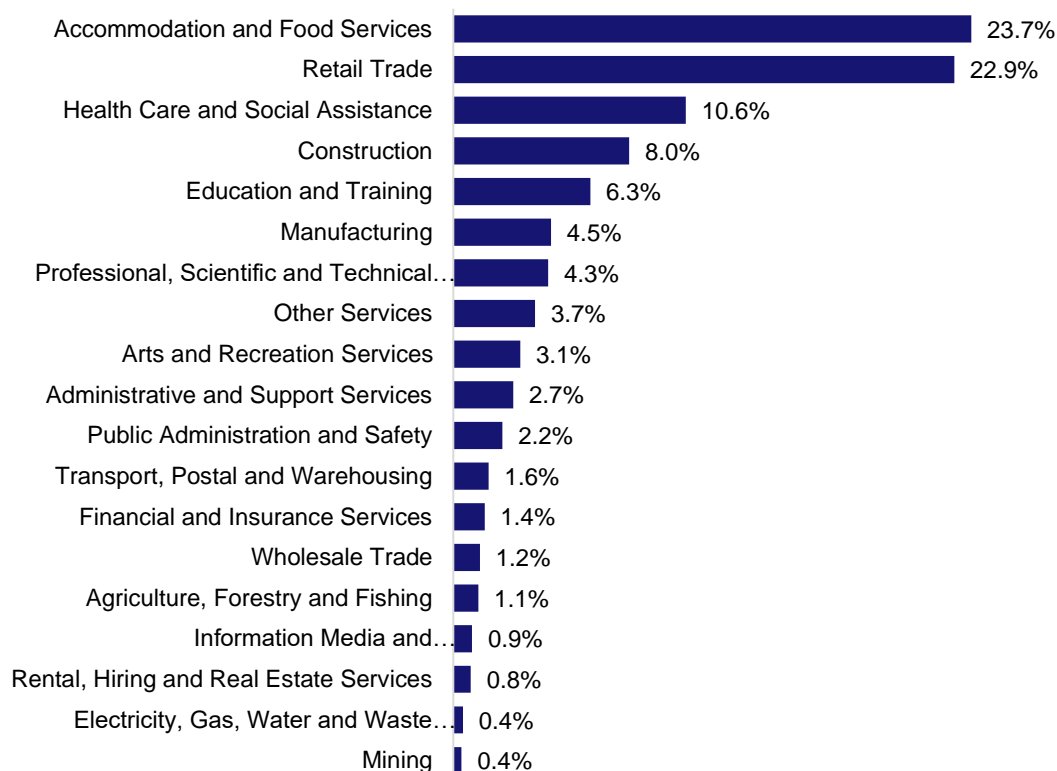
Number employed (Feb-23):	31,600
1 year employment change:	6.4%
5 year employment change:	23.8%
10 year employment change:	28.0%
Youth share of employment:	8.0%
Mature age share of employment:	7.6%

Source: ABS Labour Force Survey, Detailed, four quarter averages, February 2023, except youth and mature age data which are from the ABS Census of Population and Housing, 2021.

Note: In each chart, the solid line is the level of employment and the dotted line is a simple linear trend line for the 10 year period.

## Employment characteristics by Industry

### Which industries are youth (aged 15-24) employed in?



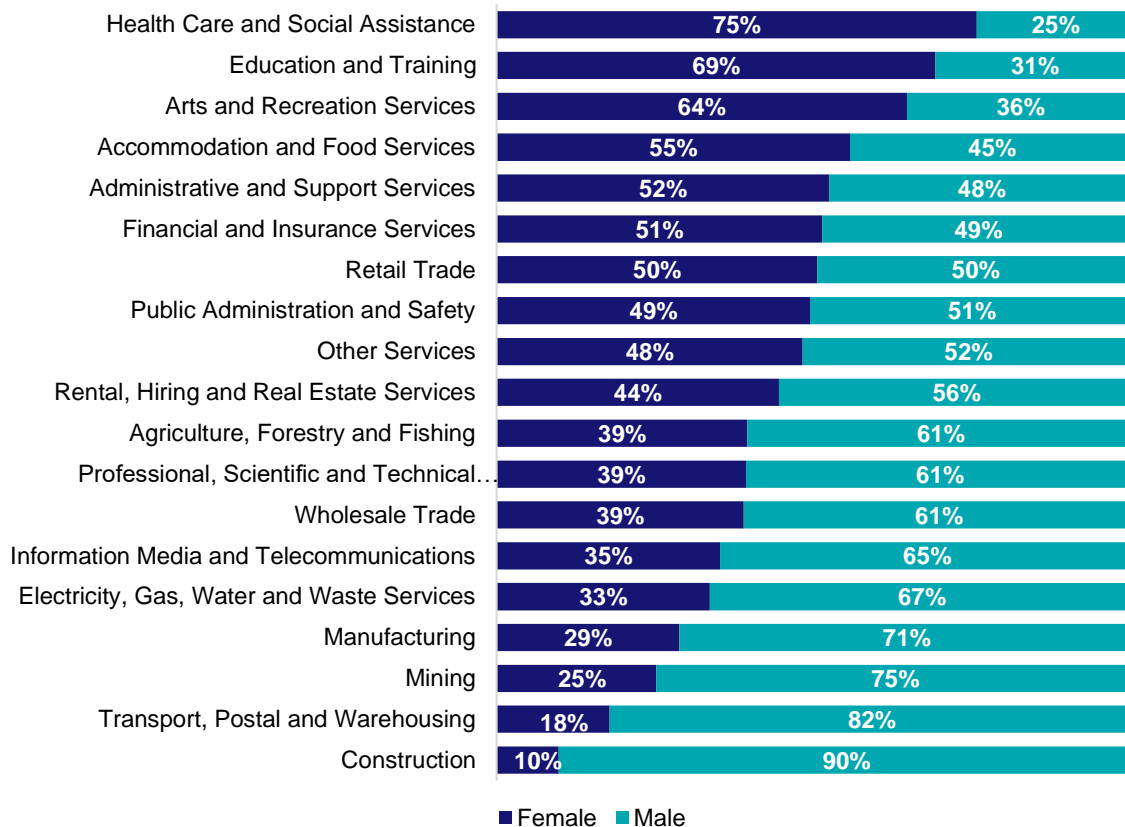
Source: ABS Census of Population and Housing, 2021.

### Which industries are mature age persons (aged 55+) employed in?



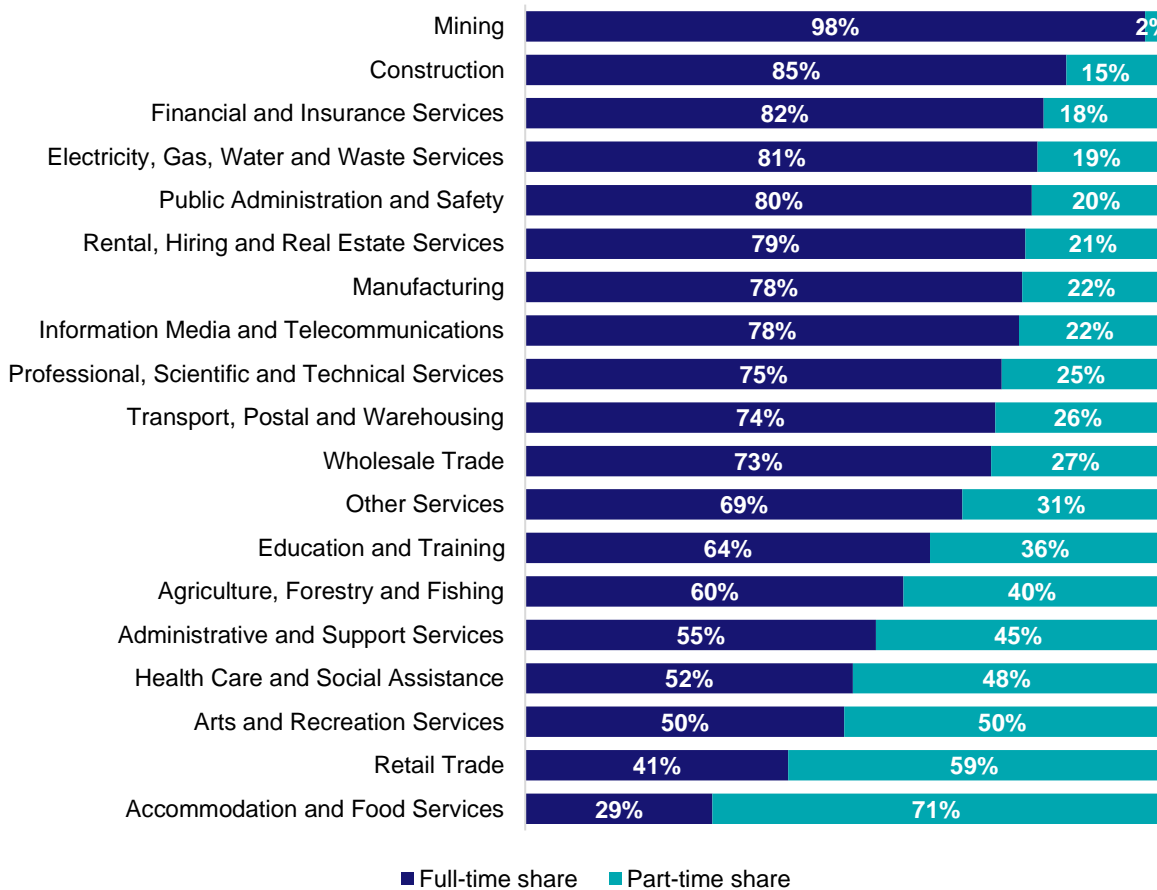
Source: ABS Census of Population and Housing, 2021. Note: SA2 level Census data have been aggregated to the Employment Region level.

## Gender share by industry



Source: ABS Labour Force Survey, Detailed, four quarter averages, February 2023.

## Full-time and part-time employment status by industry



Source: ABS Labour Force Survey, Detailed, four quarter averages, February 2023.

## Appendix

### Employment by industry, Adelaide South, February 2023

Industry (in order of size)	Share of employment in the region Feb-23 (%)	Employed ('000)			1 year change		5 year change		Full-time share %	Part-time share %	Median age *
		Feb-23	Feb-22	Feb-18	('000)	%	('000)	%			
Health Care and Social Assistance	17.9	67.1	61.9	60.5	5.3	8.5	6.7	11.0	51.6	48.4	43
Retail Trade	10.0	37.5	35.1	36.5	2.4	6.8	1.0	2.8	41.4	58.6	32
Professional, Scientific and Technical Services	9.8	36.5	35.4	28.6	1.1	3.2	7.8	27.4	75.1	24.9	42
Education and Training	8.9	33.3	36.5	30.0	-3.2	-8.8	3.3	11.0	63.8	36.2	44
Construction	8.4	31.6	29.7	25.5	1.9	6.4	6.1	23.8	85.3	14.7	40
Accommodation and Food Services	7.2	26.9	22.3	23.4	4.6	20.8	3.5	15.1	29.5	70.5	24
Public Administration and Safety	7.1	26.5	30.3	23.8	-3.8	-12.6	2.6	11.0	79.9	20.1	45
Manufacturing	5.9	22.0	20.4	20.7	1.7	8.2	1.3	6.2	78.4	21.6	45
Other Services	4.6	17.3	14.8	14.6	2.5	17.0	2.7	18.2	68.9	31.1	41
Financial and Insurance Services	3.9	14.5	12.5	10.6	2.0	16.3	3.9	36.5	81.7	18.3	42
Administrative and Support Services	3.5	13.3	11.0	12.9	2.3	21.1	0.4	3.0	55.3	44.7	43
Transport, Postal and Warehousing	3.0	11.2	10.6	13.5	0.6	5.7	-2.3	-16.9	74.1	25.9	46
Wholesale Trade	1.9	7.2	9.0	9.2	-1.7	-19.2	-2.0	-21.3	73.4	26.6	46
Rental, Hiring and Real Estate Services	1.5	5.6	6.3	5.9	-0.7	-11.1	-0.3	-5.1	78.9	21.1	46
Arts and Recreation Services	1.4	5.4	7.8	8.1	-2.4	-30.5	-2.7	-33.4	50.3	49.7	33
Agriculture, Forestry and Fishing	1.3	5.0	5.7	4.9	-0.7	-12.4	0.1	1.6	59.6	40.4	50
Mining	1.3	4.8	3.6	3.4	1.2	33.3	1.4	40.8	97.7	2.3	41
Information Media and Telecommunications	1.2	4.5	5.3	4.5	-0.8	-14.9	0.0	-0.9	77.8	22.2	40
Electricity, Gas, Water and Waste Services	1.0	3.9	3.6	3.5	0.3	9.4	0.3	9.8	80.8	19.2	45
<b>All industries</b>	<b>100.0</b>	<b>374.0</b>	<b>361.4</b>	<b>340.2</b>	<b>12.6</b>	<b>3.5</b>	<b>33.8</b>	<b>9.9</b>	<b>63.7</b>	<b>36.3</b>	<b>41</b>

Source: ABS Labour Force Survey, Detailed, four quarter averages, February 2023. \*Median age is from the ABS Census of Population and Housing, 2021. Median age has been derived using aggregated SA2s for the Employment Region.

Note: Small cells should be viewed with caution due to small sample sizes and regional volatility.



# Employment Region Industry profile

## Mid North SA Employment Region

Release date: 28 April 2023

### Overview

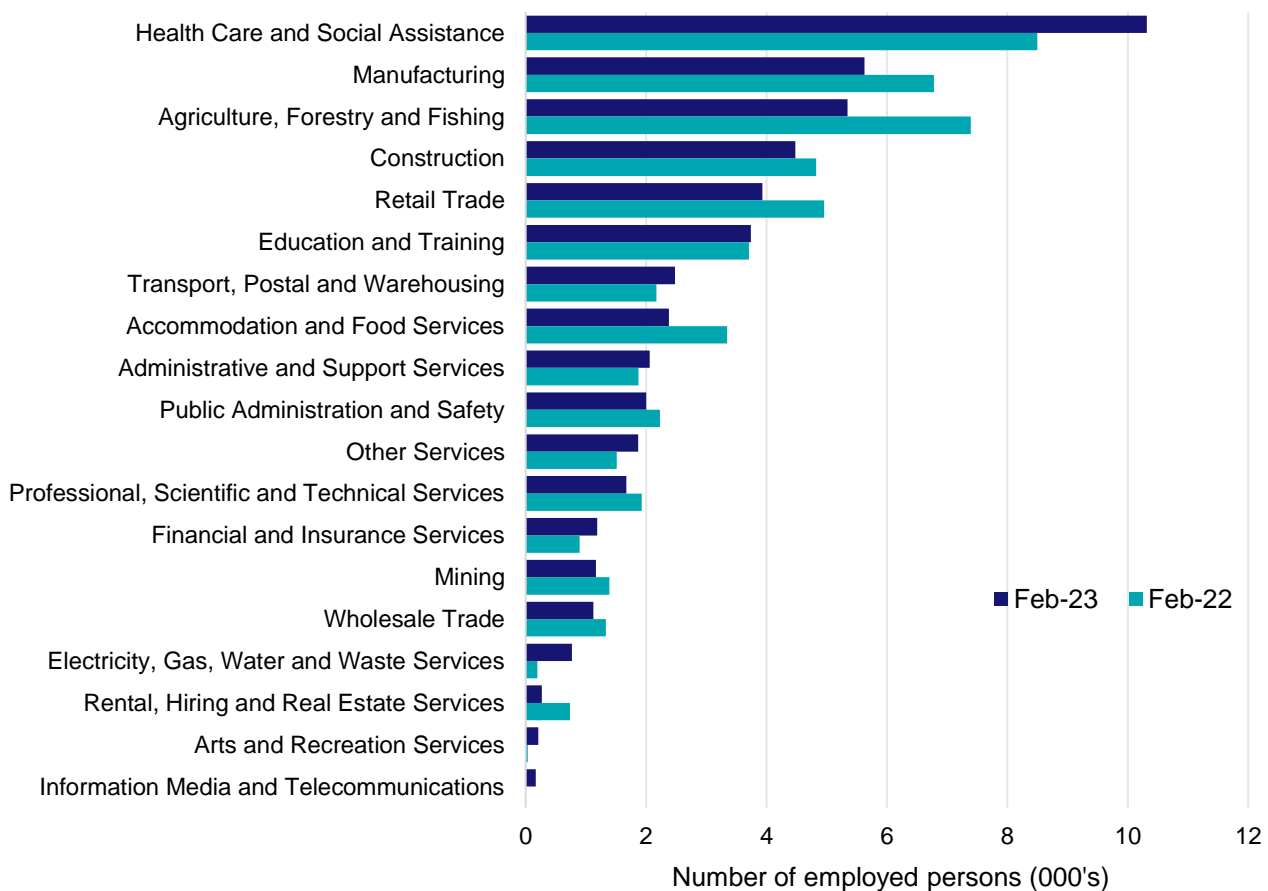
In February 2023, there were around 50,800 people employed in the Mid North SA Employment Region. The 5 largest employing industries in the region were Health Care and Social Assistance, Manufacturing, Agriculture, Forestry and Fishing, Construction, and Retail Trade. Together these 5 industries accounted for 58% of employment in the region.

Over the year to February 2023, employment in:

- Health Care and Social Assistance rose by 21.4% to stand at 10,300
- Manufacturing fell by 17.1% to stand at 5,600
- Agriculture, Forestry and Fishing fell by 27.7% to stand at 5,300.

In Health Care and Social Assistance in the Mid North SA Employment Region, 57% of workers were employed part-time; 79% were female; and the median age of the workforce was 48.

### Employment by industry, February 2023 and February 2022



Source: ABS Labour Force Survey\*, Detailed, four quarter averages, February 2023. Note that total employment for the region (four quarter averaged data) may not match data published in the Employment Region Labour Market dashboards (6 month averaged data).

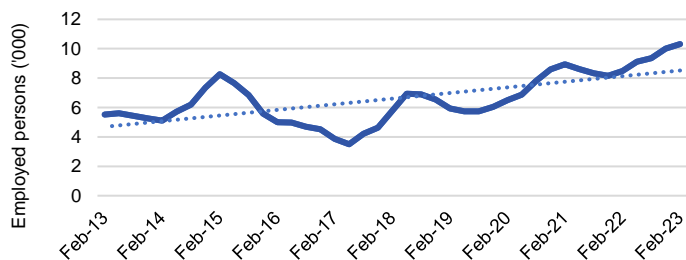
\*ABS Labour Force Survey data are based on the Barossa - Yorke - Mid North SA4.

Notes: Data are the latest available. Estimates should be treated with caution, as data can be volatile at a regional level. For any enquiries related to the data in this report, please contact [RegionalWorkforceAssessment@jobsandskills.gov.au](mailto:RegionalWorkforceAssessment@jobsandskills.gov.au)



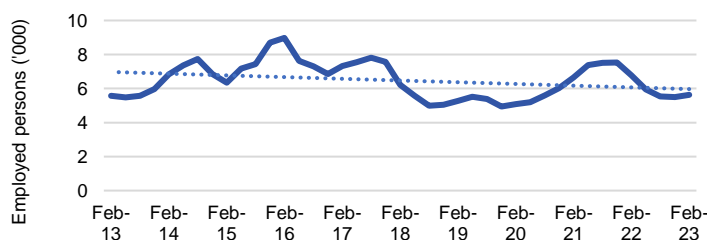
# Five largest employing industries: key statistics

## Health Care and Social Assistance



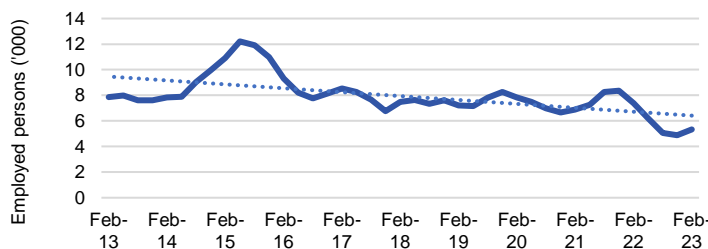
Number employed (Feb-23):	10,300
1 year employment change:	21.4%
5 year employment change:	78.2%
10 year employment change:	86.6%
Youth share of employment:	9.0%
Mature age share of employment:	15.1%

## Manufacturing



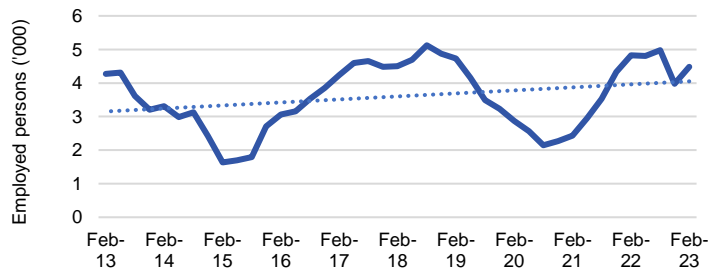
Number employed (Feb-23):	5,600
1 year employment change:	-17.1%
5 year employment change:	-9.4%
10 year employment change:	1.0%
Youth share of employment:	11.6%
Mature age share of employment:	9.8%

## Agriculture, Forestry and Fishing



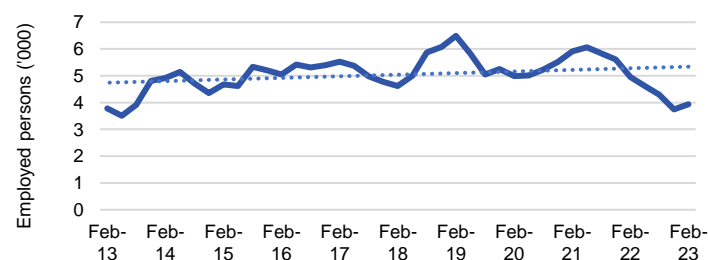
Number employed (Feb-23):	5,300
1 year employment change:	-27.7%
5 year employment change:	-28.5%
10 year employment change:	-32.0%
Youth share of employment:	8.4%
Mature age share of employment:	20.0%

## Construction



Number employed (Feb-23):	4,500
1 year employment change:	-7.1%
5 year employment change:	-0.5%
10 year employment change:	4.8%
Youth share of employment:	9.4%
Mature age share of employment:	6.2%

## Retail Trade



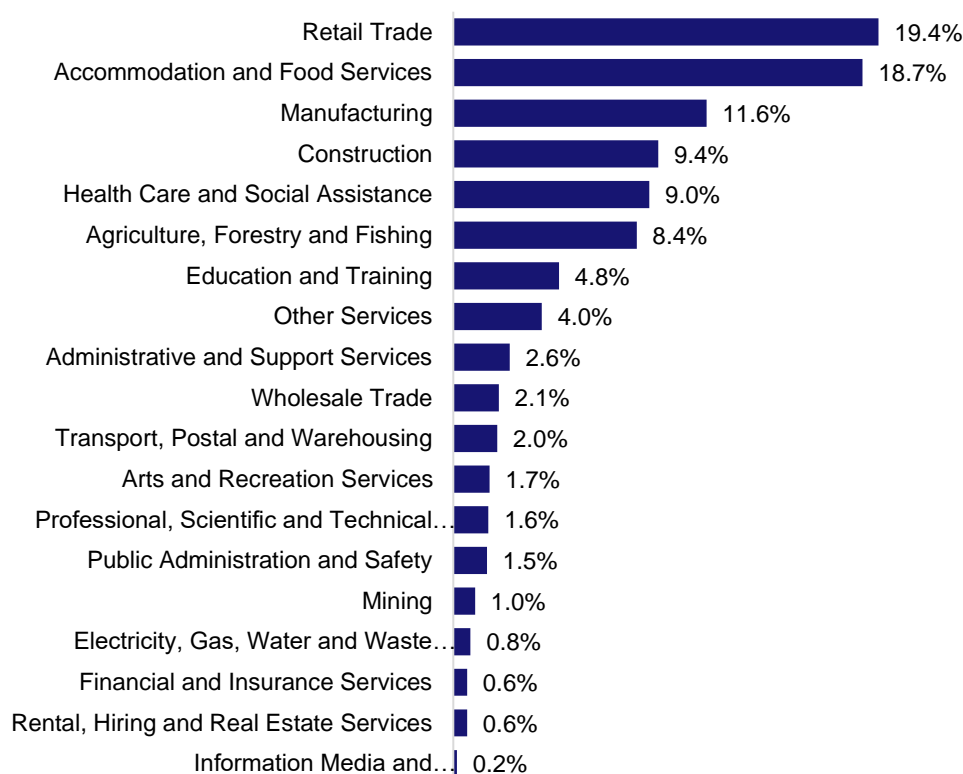
Number employed (Feb-23):	3,900
1 year employment change:	-20.7%
5 year employment change:	-14.8%
10 year employment change:	4.1%
Youth share of employment:	19.4%
Mature age share of employment:	7.1%

Source: ABS Labour Force Survey, Detailed, four quarter averages, February 2023, except youth and mature age data which are from the ABS Census of Population and Housing, 2021.

Note: In each chart, the solid line is the level of employment and the dotted line is a simple linear trend line for the 10 year period.

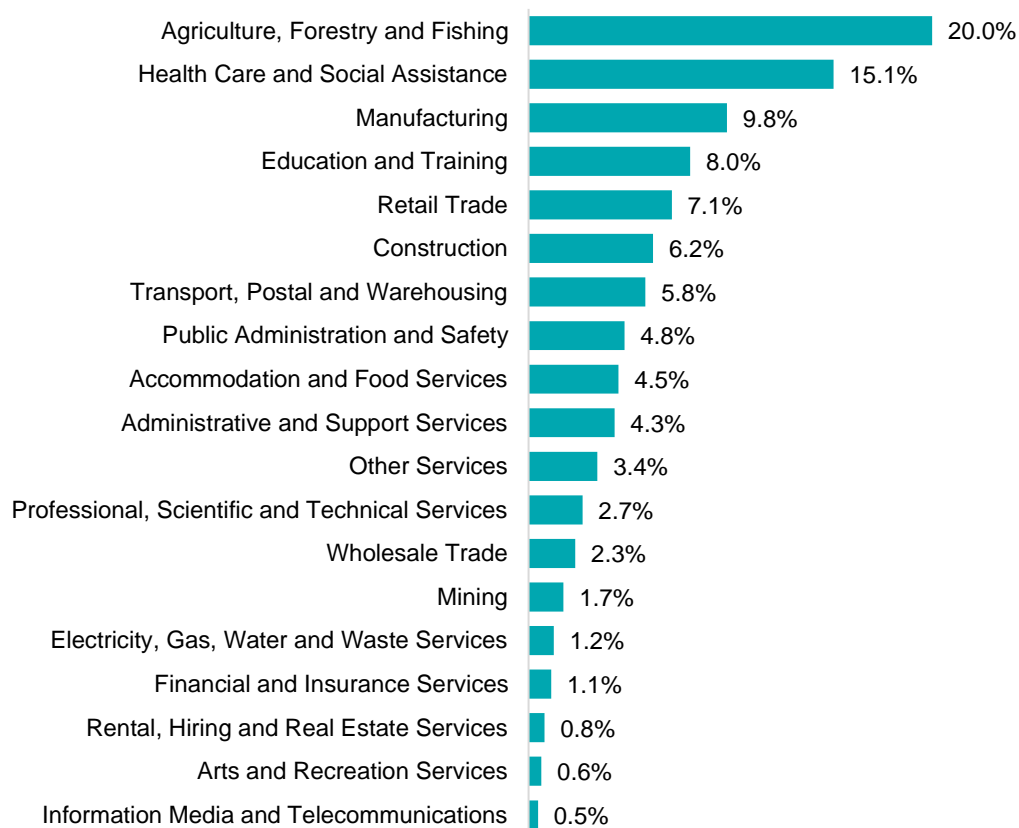
## Employment characteristics by Industry

### Which industries are youth (aged 15-24) employed in?



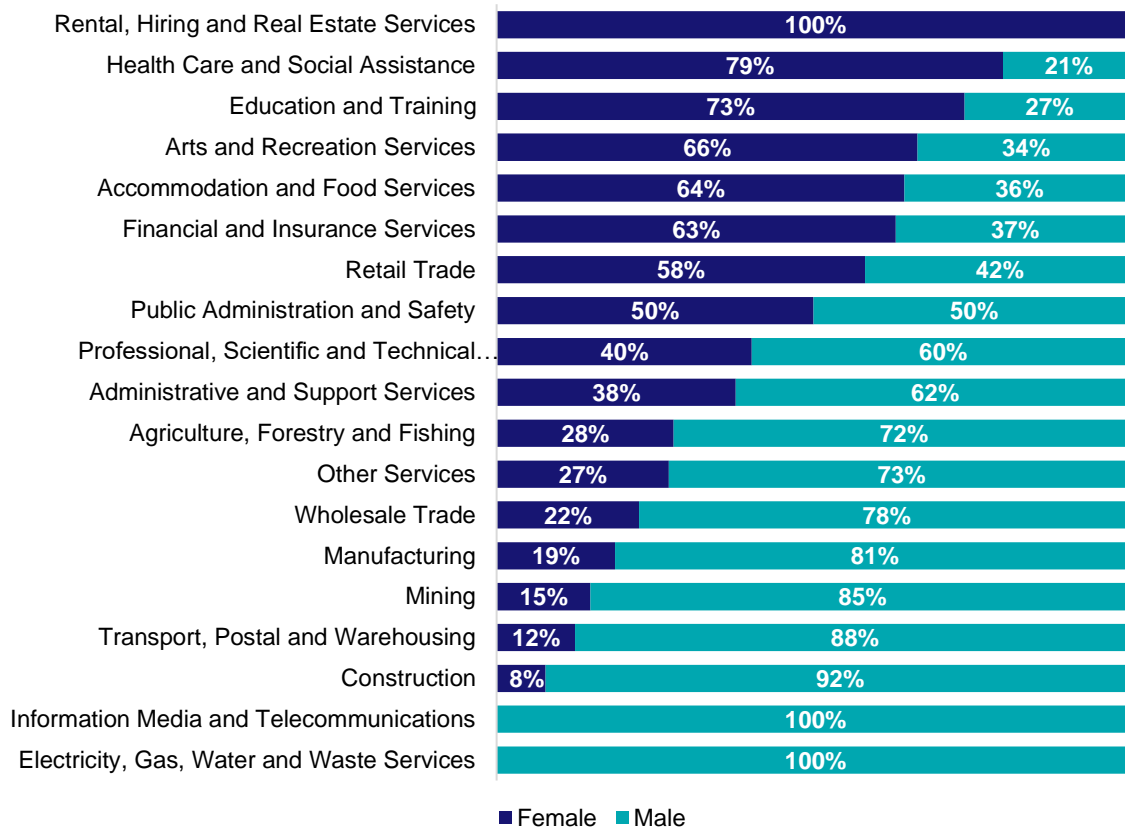
Source: ABS Census of Population and Housing, 2021.

### Which industries are mature age persons (aged 55+) employed in?



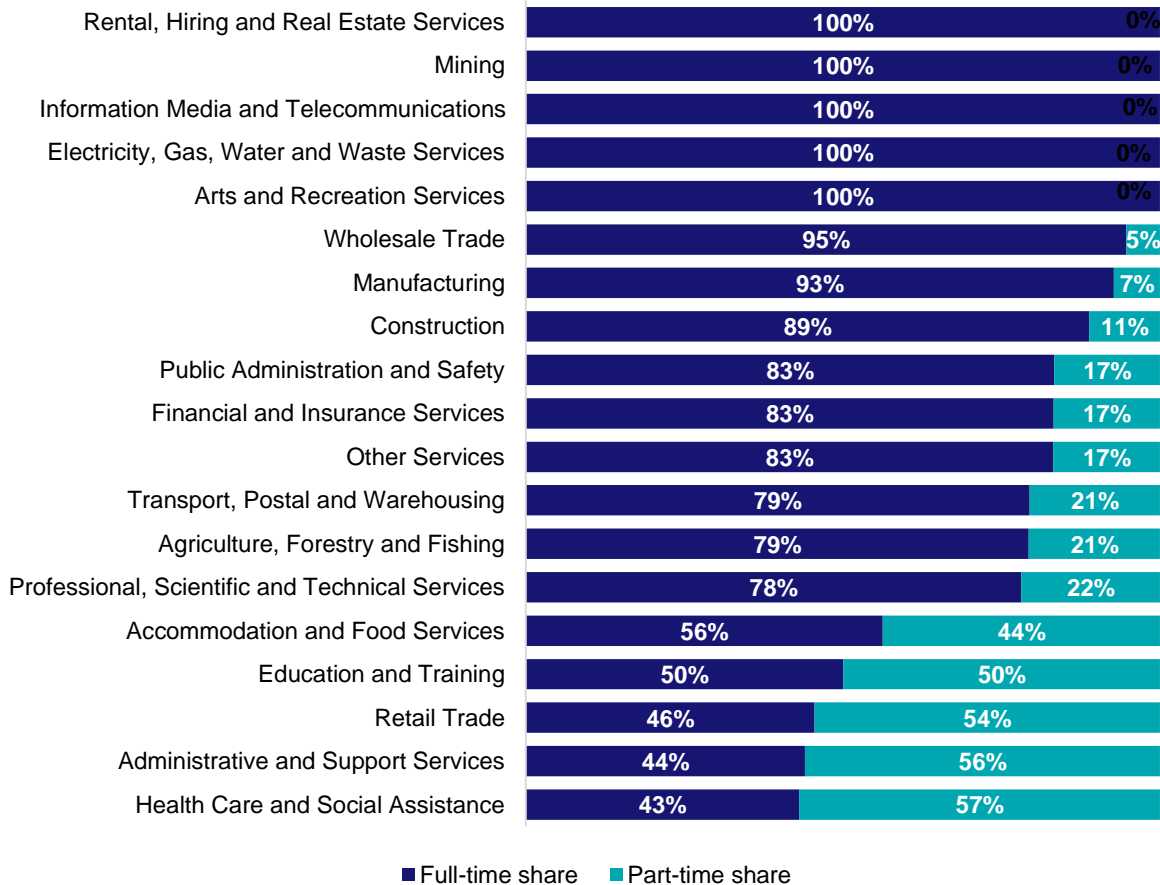
Source: ABS Census of Population and Housing, 2021. Note: SA2 level Census data have been aggregated to the Employment Region level.

## Gender share by industry



Source: ABS Labour Force Survey, Detailed, four quarter averages, February 2023.

## Full-time and part-time employment status by industry



Source: ABS Labour Force Survey, Detailed, four quarter averages, February 2023.

## Appendix

### Employment by industry, Mid North SA, February 2023

Industry (in order of size)	Share of employment in the region Feb-23 (%)	Employed ('000)			1 year change		5 year change		Full-time share %	Part-time share %	Median age *
		Feb-23	Feb-22	Feb-18	('000)	%	('000)	%			
Health Care and Social Assistance	20.3	10.3	8.5	5.8	1.8	21.4	4.5	78.2	43.1	56.9	48
Manufacturing	11.1	5.6	6.8	6.2	-1.2	-17.1	-0.6	-9.4	92.7	7.3	44
Agriculture, Forestry and Fishing	10.5	5.3	7.4	7.5	-2.0	-27.7	-2.1	-28.5	79.3	20.7	52
Construction	8.8	4.5	4.8	4.5	-0.3	-7.1	0.0	-0.5	88.8	11.2	40
Retail Trade	7.7	3.9	5.0	4.6	-1.0	-20.7	-0.7	-14.8	45.5	54.5	37
Education and Training	7.4	3.7	3.7	3.7	0.0	0.8	0.0	0.2	50.1	49.9	46
Transport, Postal and Warehousing	4.9	2.5	2.2	2.7	0.3	14.1	-0.3	-9.2	79.5	20.5	51
Accommodation and Food Services	4.7	2.4	3.3	2.8	-1.0	-28.9	-0.4	-15.4	56.3	43.7	32
Administrative and Support Services	4.1	2.1	1.9	1.8	0.2	9.9	0.2	12.9	44.0	56.0	48
Public Administration and Safety	3.9	2.0	2.2	2.8	-0.2	-10.3	-0.8	-29.3	83.3	16.7	49
Other Services	3.7	1.9	1.5	1.4	0.4	23.8	0.5	38.0	83.2	16.8	43
Professional, Scientific and Technical Services	3.3	1.7	1.9	2.1	-0.3	-13.3	-0.4	-19.0	78.1	21.9	44
Financial and Insurance Services	2.3	1.2	0.9	0.8	0.3	32.8	0.4	47.0	83.2	16.8	43
Mining	2.3	1.2	1.4	0.2	-0.2	-16.2	0.9	386.5	100.0	0.0	43
Wholesale Trade	2.2	1.1	1.3	1.1	-0.2	-15.5	0.0	4.5	94.7	5.3	49
Electricity, Gas, Water and Waste Services	1.5	0.8	0.2	0.5	0.6	291.3	0.3	70.5	100.0	0.0	42
Rental, Hiring and Real Estate Services	0.5	0.3	0.7	0.2	-0.5	-63.4	0.1	79.1	100.0	0.0	51
Arts and Recreation Services	0.4	0.2	0.0	1.1	0.2	472.0	-0.9	-81.2	100.0	0.0	28
Information Media and Telecommunications	0.3	0.2	0.0	0.6	0.2	-	-0.5	-74.4	100.0	0.0	38
<b>All industries</b>	<b>100.0</b>	<b>50.8</b>	<b>53.8</b>	<b>50.4</b>	<b>-3.0</b>	<b>-5.6</b>	<b>0.4</b>	<b>0.7</b>	<b>68.8</b>	<b>31.2</b>	<b>45</b>

Source: ABS Labour Force Survey, Detailed, four quarter averages, February 2023. \*Median age is from the ABS Census of Population and Housing, 2021. Median age has been derived using aggregated SA2s for the Employment Region.

Note: Small cells should be viewed with caution due to small sample sizes and regional volatility.



# Employment Region Industry profile

## Murray and South East Employment Region

Release date: 28 April 2023

### Overview

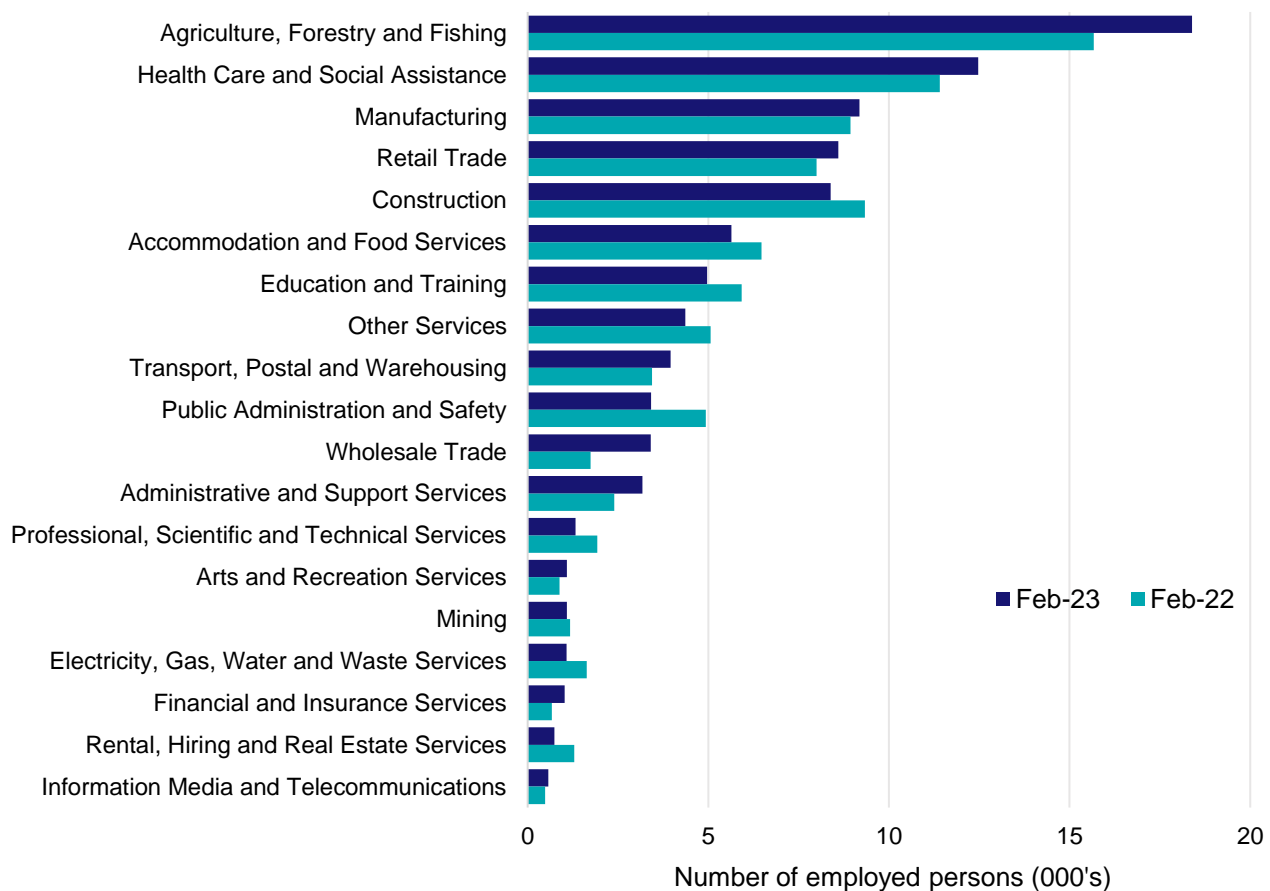
In February 2023, there were around 92,800 people employed in the Murray and South East Employment Region. The 5 largest employing industries in the region were Agriculture, Forestry and Fishing, Health Care and Social Assistance, Manufacturing, Retail Trade, and Construction. Together these 5 industries accounted for 61% of employment in the region.

Over the year to February 2023, employment in:

- Agriculture, Forestry and Fishing rose by 17.3% to stand at 18,400
- Health Care and Social Assistance rose by 9.3% to stand at 12,500
- Manufacturing rose by 2.8% to stand at 9,200.

In Agriculture, Forestry and Fishing in the Murray and South East Employment Region, 69% of workers were employed full-time; 66% were male; and the median age of the workforce was 48.

### Employment by industry, February 2023 and February 2022



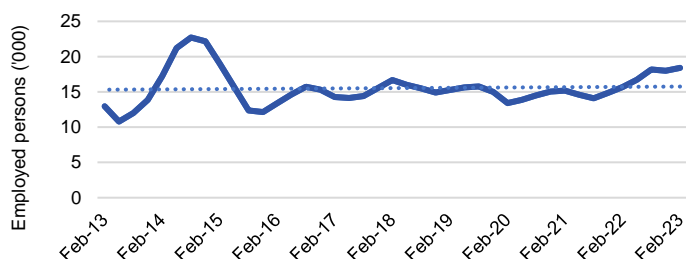
Source: ABS Labour Force Survey\*, Detailed, four quarter averages, February 2023. Note that total employment for the region (four quarter averaged data) may not match data published in the Employment Region Labour Market dashboards (6 month averaged data).

\*ABS Labour Force Survey data are based on the South Australia - South East SA4.

Notes: Data are the latest available. Estimates should be treated with caution, as data can be volatile at a regional level. For any enquiries related to the data in this report, please contact [RegionalWorkforceAssessment@jobsandskills.gov.au](mailto:RegionalWorkforceAssessment@jobsandskills.gov.au)

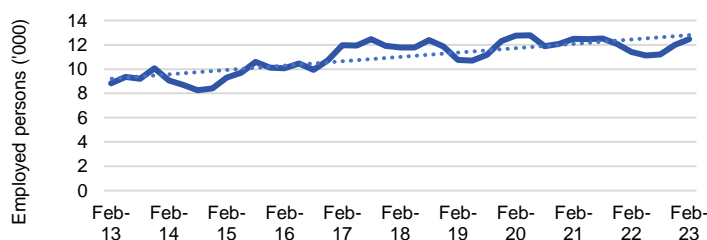
# Five largest employing industries: key statistics

## Agriculture, Forestry and Fishing



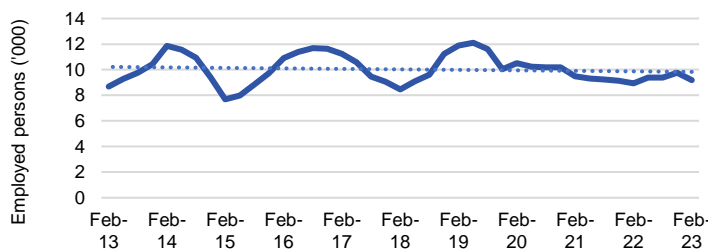
Number employed (Feb-23):	18,400
1 year employment change:	17.3%
5 year employment change:	10.2%
10 year employment change:	41.8%
Youth share of employment:	12.6%
Mature age share of employment:	25.3%

## Health Care and Social Assistance



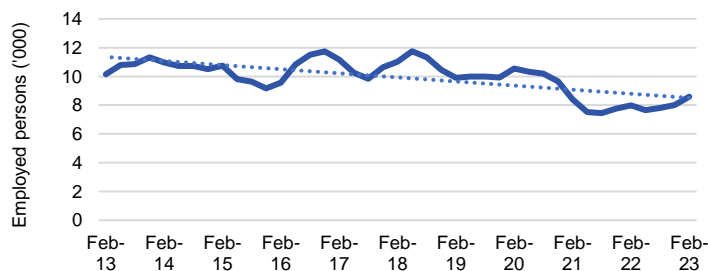
Number employed (Feb-23):	12,500
1 year employment change:	9.3%
5 year employment change:	5.8%
10 year employment change:	41.4%
Youth share of employment:	8.6%
Mature age share of employment:	14.2%

## Manufacturing



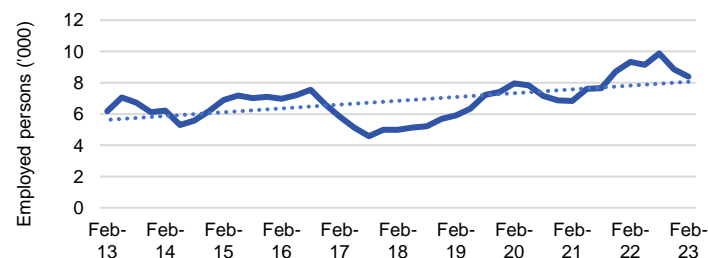
Number employed (Feb-23):	9,200
1 year employment change:	2.8%
5 year employment change:	8.4%
10 year employment change:	5.7%
Youth share of employment:	9.6%
Mature age share of employment:	8.9%

## Retail Trade



Number employed (Feb-23):	8,600
1 year employment change:	7.5%
5 year employment change:	-21.9%
10 year employment change:	-15.3%
Youth share of employment:	19.8%
Mature age share of employment:	7.7%

## Construction



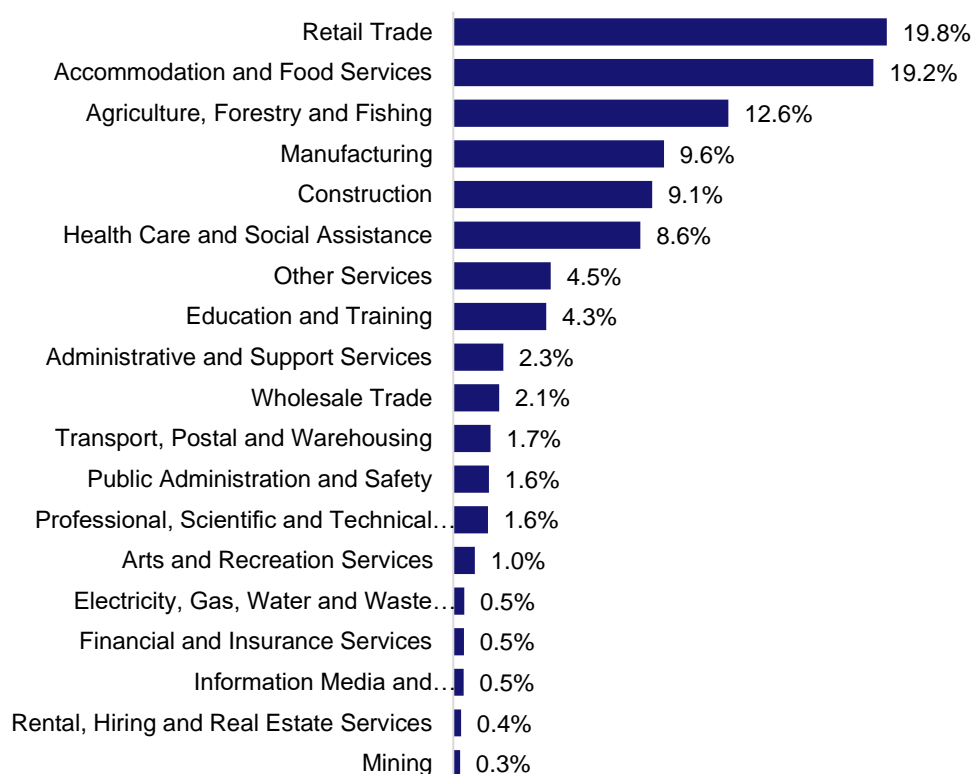
Number employed (Feb-23):	8,400
1 year employment change:	-10.2%
5 year employment change:	68.1%
10 year employment change:	35.8%
Youth share of employment:	9.1%
Mature age share of employment:	6.6%

Source: ABS Labour Force Survey, Detailed, four quarter averages, February 2023, except youth and mature age data which are from the ABS Census of Population and Housing, 2021.

Note: In each chart, the solid line is the level of employment and the dotted line is a simple linear trend line for the 10 year period.

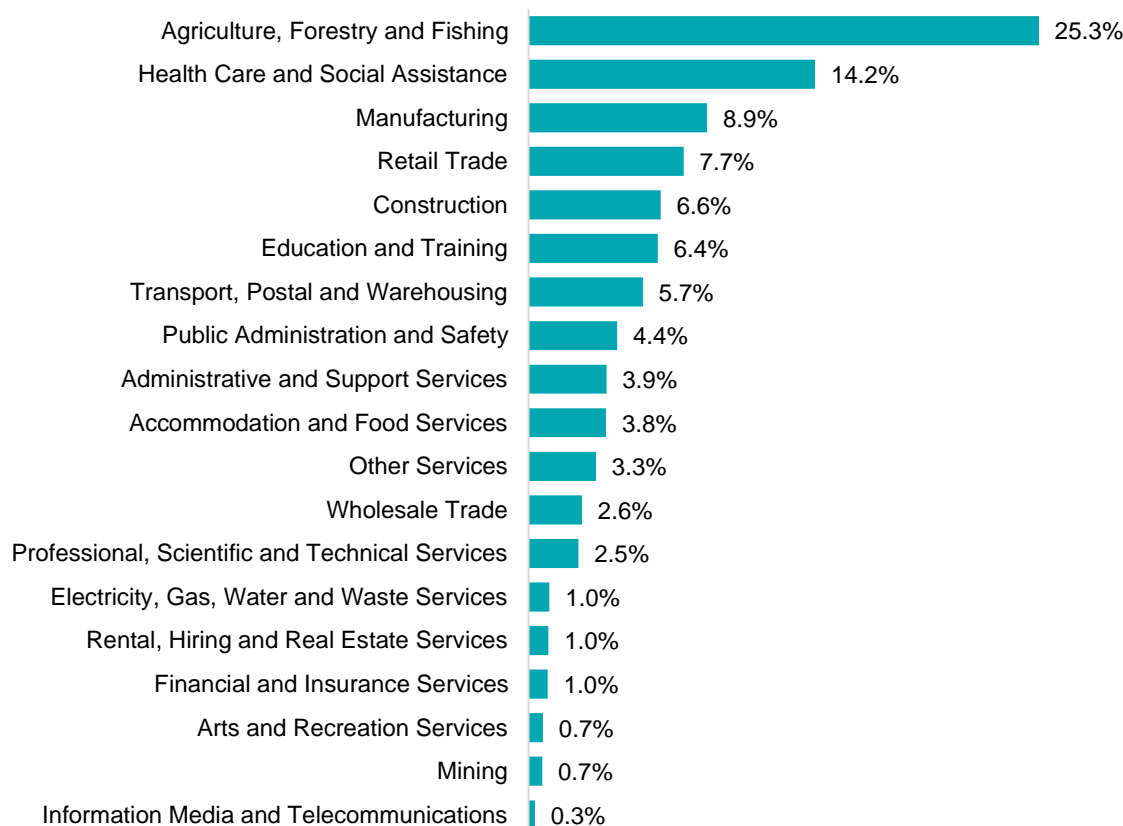
## Employment characteristics by Industry

### Which industries are youth (aged 15-24) employed in?



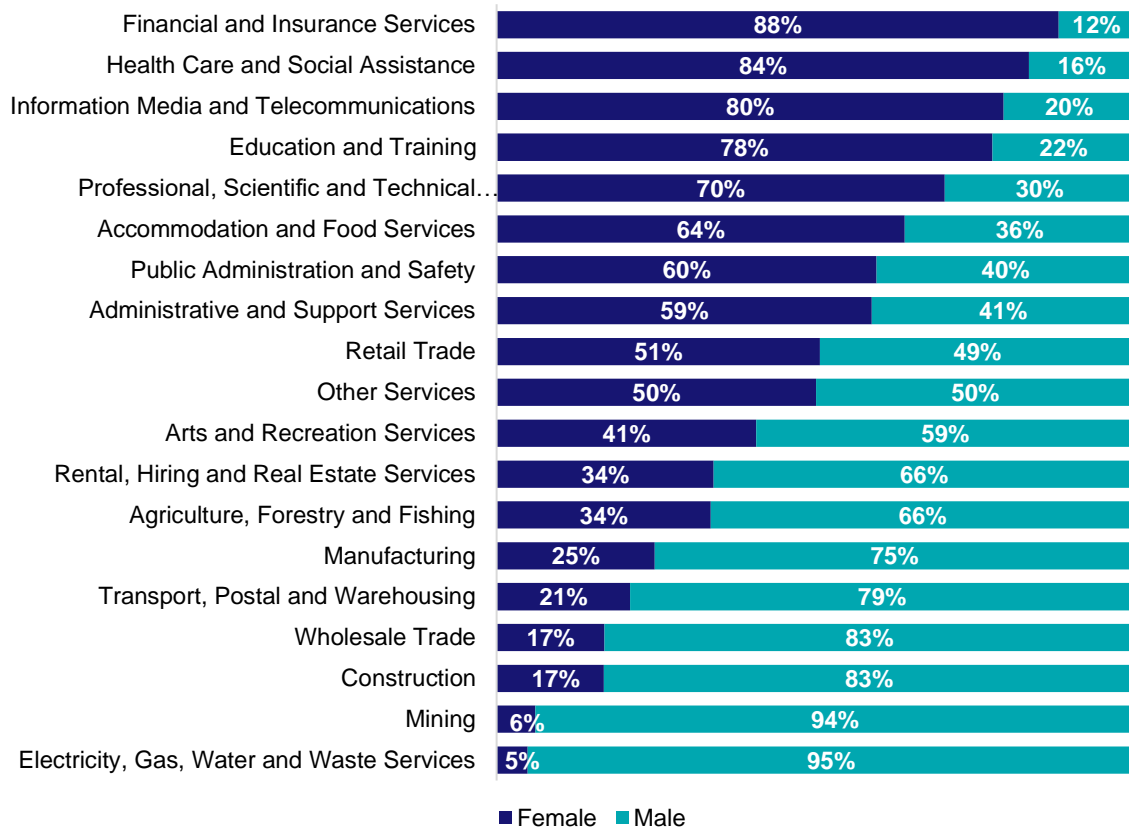
Source: ABS Census of Population and Housing, 2021.

### Which industries are mature age persons (aged 55+) employed in?



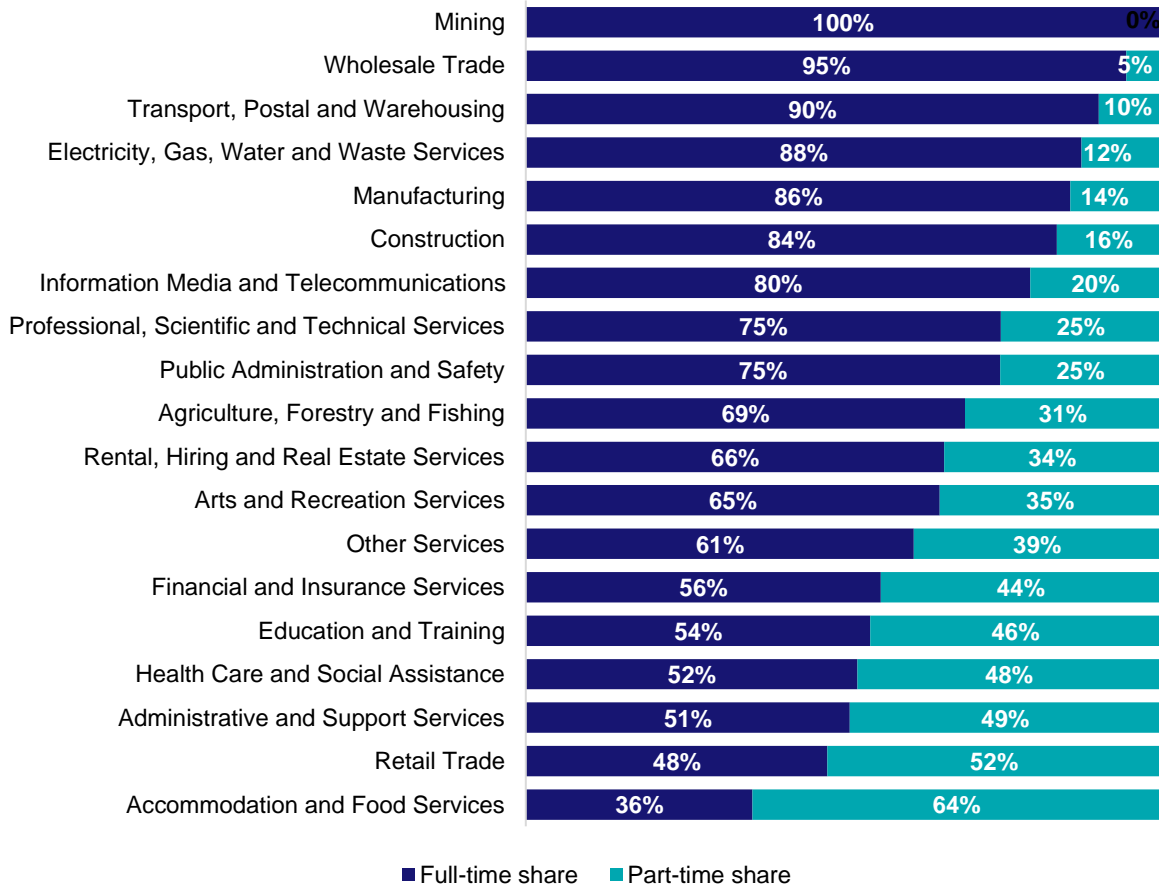
Source: ABS Census of Population and Housing, 2021. Note: SA2 level Census data have been aggregated to the Employment Region level.

## Gender share by industry



Source: ABS Labour Force Survey, Detailed, four quarter averages, February 2023.

## Full-time and part-time employment status by industry



Source: ABS Labour Force Survey, Detailed, four quarter averages, February 2023.



## Appendix

### Employment by industry, Murray and South East, February 2023

Industry (in order of size)	Share of employment in the region Feb-23 (%)	Employed ('000)			1 year change		5 year change		Full-time share %	Part-time share %	Median age *
		Feb-23	Feb-22	Feb-18	('000)	%	('000)	%			
Agriculture, Forestry and Fishing	19.8	18.4	15.7	16.7	2.7	17.3	1.7	10.2	69.3	30.7	48
Health Care and Social Assistance	13.4	12.5	11.4	11.8	1.1	9.3	0.7	5.8	52.3	47.7	46
Manufacturing	9.9	9.2	8.9	8.5	0.2	2.8	0.7	8.4	85.9	14.1	43
Retail Trade	9.3	8.6	8.0	11.0	0.6	7.5	-2.4	-21.9	47.6	52.4	36
Construction	9.0	8.4	9.3	5.0	-1.0	-10.2	3.4	68.1	83.7	16.3	40
Accommodation and Food Services	6.1	5.6	6.5	6.3	-0.8	-12.9	-0.6	-10.0	35.7	64.3	27
Education and Training	5.3	5.0	5.9	5.7	-1.0	-16.1	-0.7	-12.2	54.3	45.7	44
Other Services	4.7	4.4	5.1	3.1	-0.7	-13.7	1.3	41.8	61.2	38.8	39
Transport, Postal and Warehousing	4.3	4.0	3.4	4.8	0.5	15.0	-0.9	-18.0	90.3	9.7	52
Public Administration and Safety	3.7	3.4	4.9	3.6	-1.5	-30.7	-0.2	-4.9	74.8	25.2	47
Wholesale Trade	3.7	3.4	1.7	2.5	1.7	95.2	0.9	35.8	94.7	5.3	47
Administrative and Support Services	3.4	3.2	2.4	3.3	0.8	32.5	-0.1	-2.7	51.1	48.9	47
Professional, Scientific and Technical Services	1.4	1.3	1.9	2.7	-0.6	-31.3	-1.4	-50.7	74.9	25.1	42
Arts and Recreation Services	1.2	1.1	0.9	1.1	0.2	24.1	0.0	-0.4	65.3	34.7	34
Mining	1.2	1.1	1.2	1.3	-0.1	-7.8	-0.2	-17.5	100.0	0.0	45
Electricity, Gas, Water and Waste Services	1.2	1.1	1.6	1.2	-0.6	-34.3	-0.1	-11.7	87.6	12.4	49
Financial and Insurance Services	1.1	1.0	0.7	0.8	0.4	53.9	0.2	31.9	56.0	44.0	45
Rental, Hiring and Real Estate Services	0.8	0.7	1.3	1.9	-0.6	-42.7	-1.1	-60.2	66.0	34.0	46
Information Media and Telecommunications	0.6	0.6	0.5	0.6	0.1	19.4	-0.1	-8.4	79.5	20.5	32
<b>All industries</b>	<b>100.0</b>	<b>92.8</b>	<b>91.4</b>	<b>91.7</b>	<b>1.5</b>	<b>1.6</b>	<b>1.2</b>	<b>1.3</b>	<b>66.6</b>	<b>33.4</b>	<b>44</b>

Source: ABS Labour Force Survey, Detailed, four quarter averages, February 2023. \*Median age is from the ABS Census of Population and Housing, 2021. Median age has been derived using aggregated SA2s for the Employment Region.

Note: Small cells should be viewed with caution due to small sample sizes and regional volatility.



# Employment Region Industry profile

## North West Country SA Employment Region

Release date: 28 April 2023

### Overview

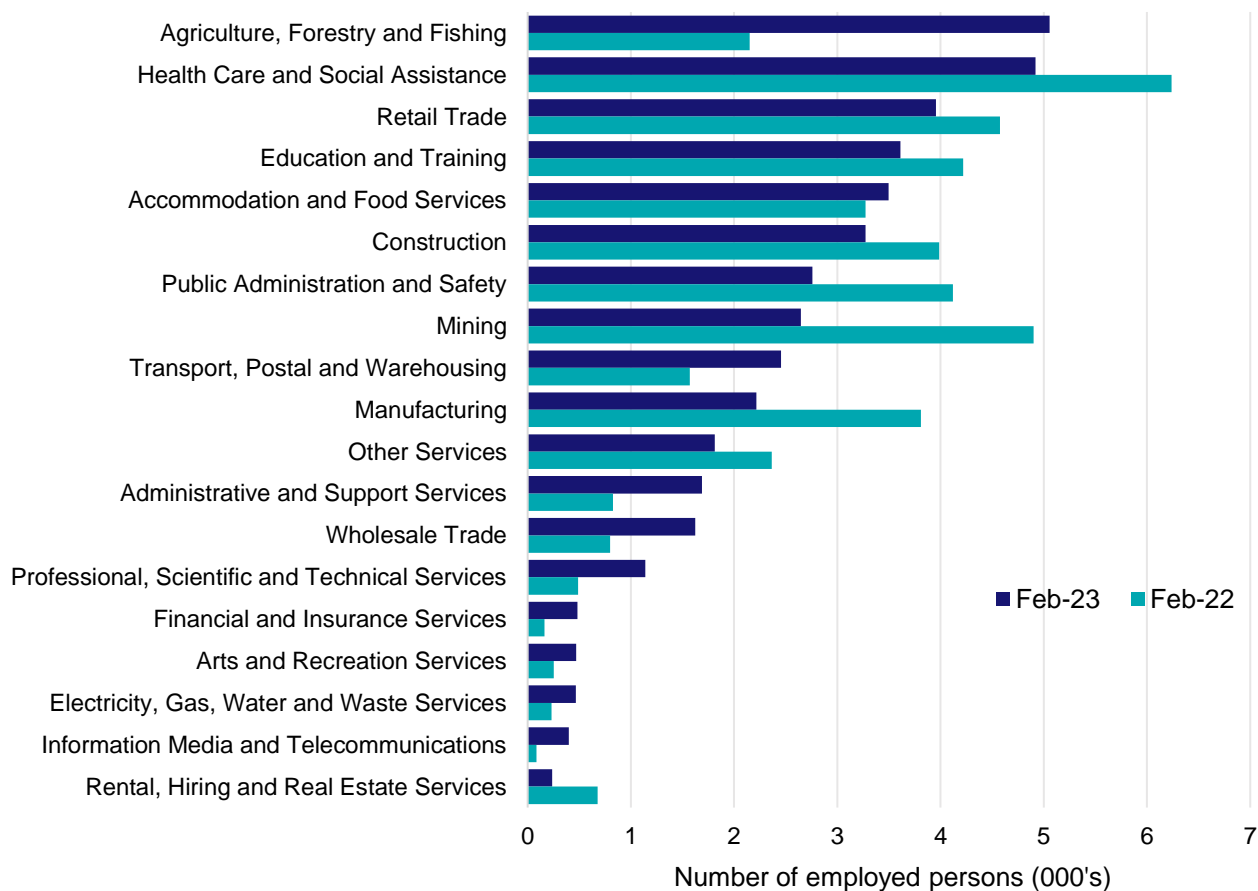
In February 2023, there were around 42,700 people employed in the North West Country SA Employment Region. The 5 largest employing industries in the region were Agriculture, Forestry and Fishing, Health Care and Social Assistance, Retail Trade, Education and Training, and Accommodation and Food Services. Together these 5 industries accounted for 49% of employment in the region.

Over the year to February 2023, employment in:

- Agriculture, Forestry and Fishing rose by 135.0% to stand at 5,100
- Health Care and Social Assistance fell by 21.1% to stand at 4,900
- Retail Trade fell by 13.6% to stand at 4,000.

In Agriculture, Forestry and Fishing in the North West Country SA Employment Region, 84% of workers were employed full-time; 81% were male; and the median age of the workforce was 41.

### Employment by industry, February 2023 and February 2022



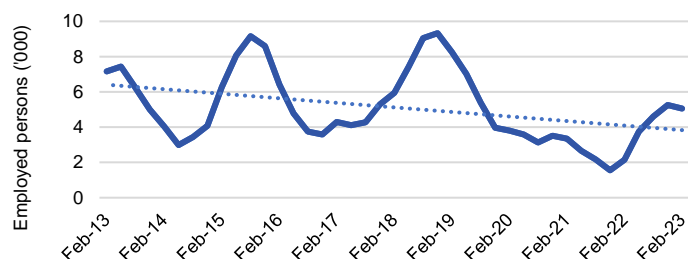
Source: ABS Labour Force Survey\*, Detailed, four quarter averages, February 2023. Note that total employment for the region (four quarter averaged data) may not match data published in the Employment Region Labour Market dashboards (6 month averaged data).

\*ABS Labour Force Survey data are based on the South Australia - Outback SA4.

Notes: Data are the latest available. Estimates should be treated with caution, as data can be volatile at a regional level. For any enquiries related to the data in this report, please contact [RegionalWorkforceAssessment@jobsandskills.gov.au](mailto:RegionalWorkforceAssessment@jobsandskills.gov.au)

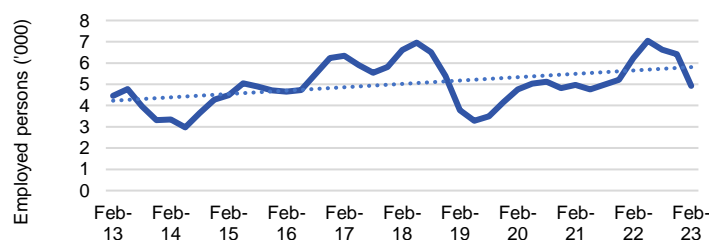
# Five largest employing industries: key statistics

## Agriculture, Forestry and Fishing



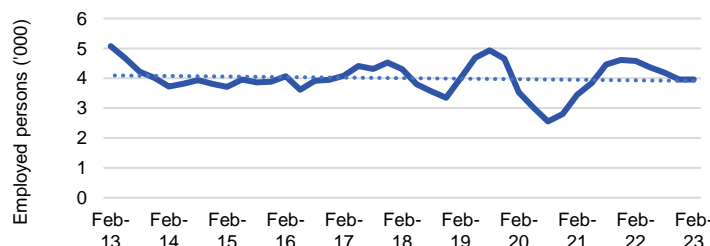
Number employed (Feb-23):	5,100
1 year employment change:	135.0%
5 year employment change:	-14.9%
10 year employment change:	-29.5%
Youth share of employment:	2.8%
Mature age share of employment:	4.9%

## Health Care and Social Assistance



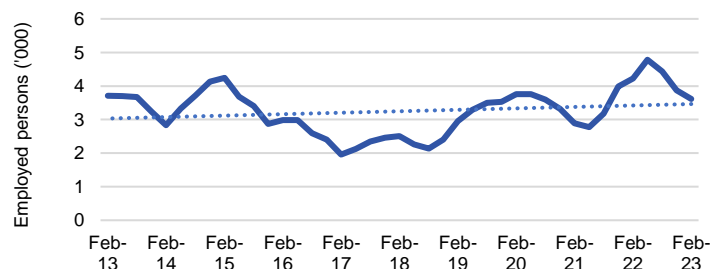
Number employed (Feb-23):	4,900
1 year employment change:	-21.1%
5 year employment change:	-25.7%
10 year employment change:	10.3%
Youth share of employment:	11.1%
Mature age share of employment:	18.1%

## Retail Trade



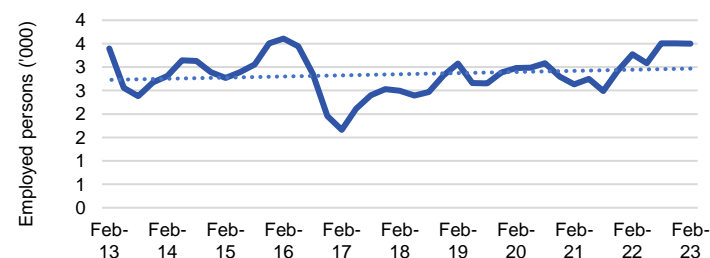
Number employed (Feb-23):	4,000
1 year employment change:	-13.6%
5 year employment change:	-8.1%
10 year employment change:	-22.1%
Youth share of employment:	22.8%
Mature age share of employment:	8.7%

## Education and Training



Number employed (Feb-23):	3,600
1 year employment change:	-14.5%
5 year employment change:	43.8%
10 year employment change:	-2.6%
Youth share of employment:	4.5%
Mature age share of employment:	9.2%

## Accommodation and Food Services



Number employed (Feb-23):	3,500
1 year employment change:	6.9%
5 year employment change:	40.1%
10 year employment change:	2.9%
Youth share of employment:	20.8%
Mature age share of employment:	4.5%

Source: ABS Labour Force Survey, Detailed, four quarter averages, February 2023, except youth and mature age data which are from the ABS Census of Population and Housing, 2021.

Note: In each chart, the solid line is the level of employment and the dotted line is a simple linear trend line for the 10 year period.

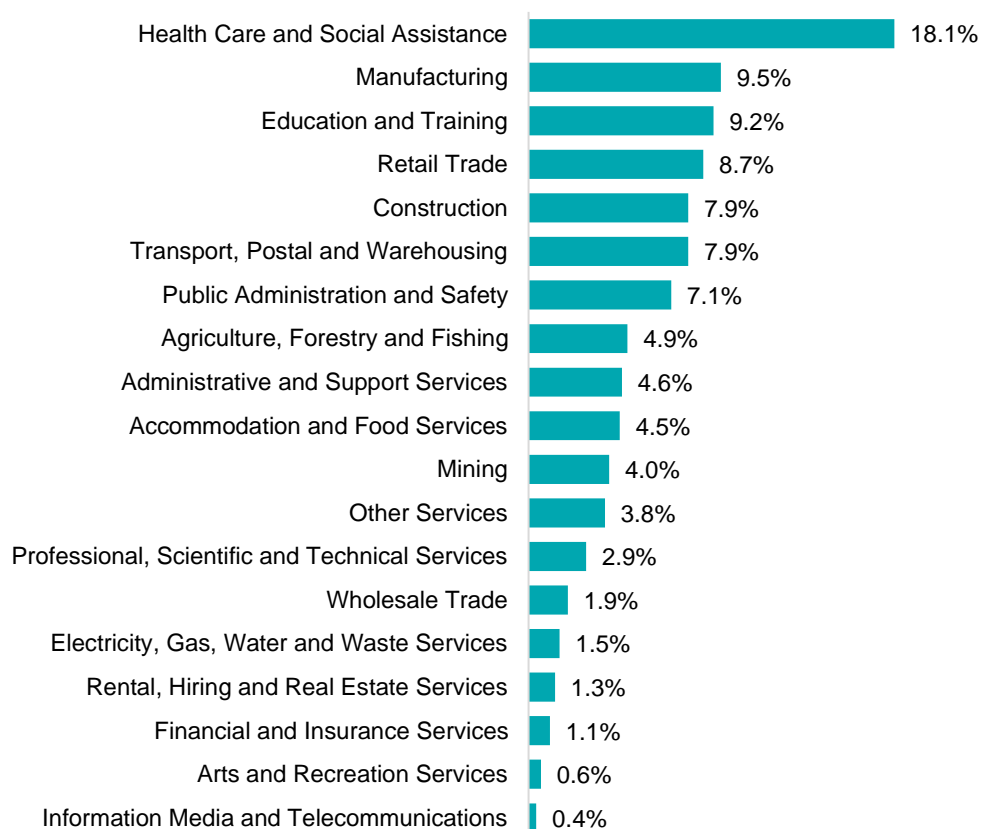
## Employment characteristics by Industry

### Which industries are youth (aged 15-24) employed in?



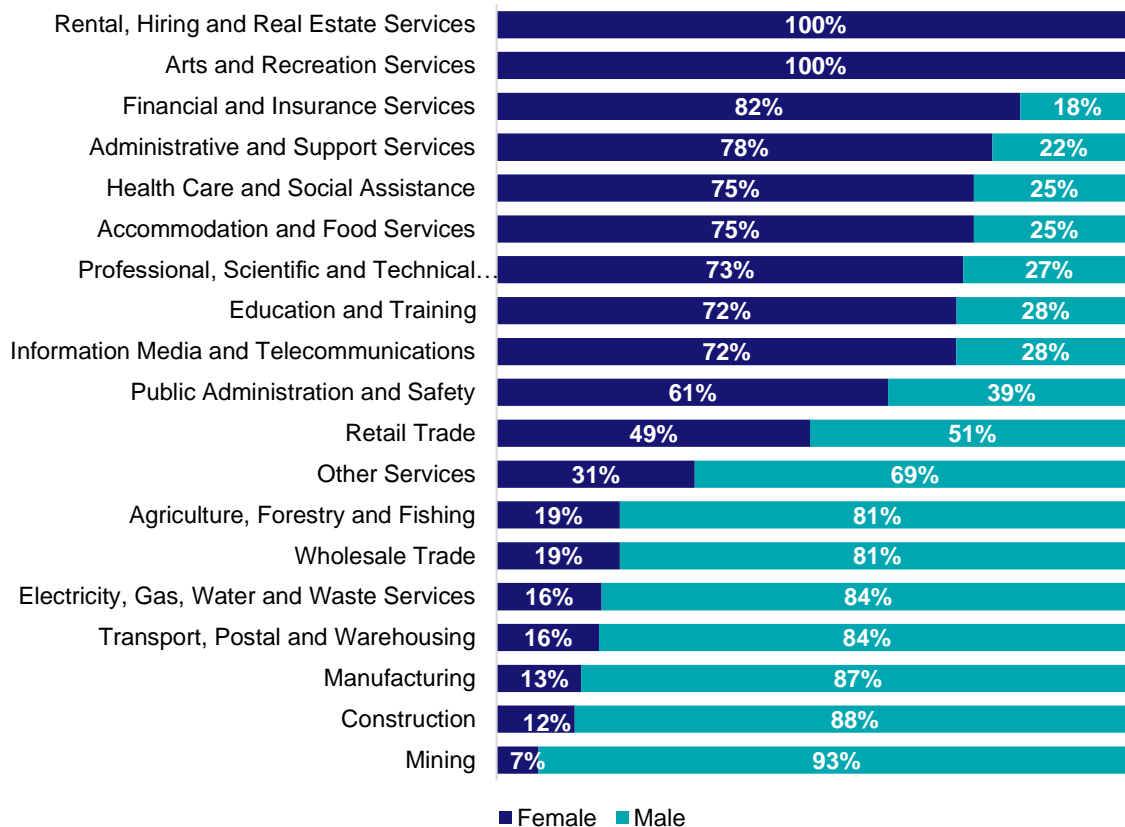
Source: ABS Census of Population and Housing, 2021.

### Which industries are mature age persons (aged 55+) employed in?



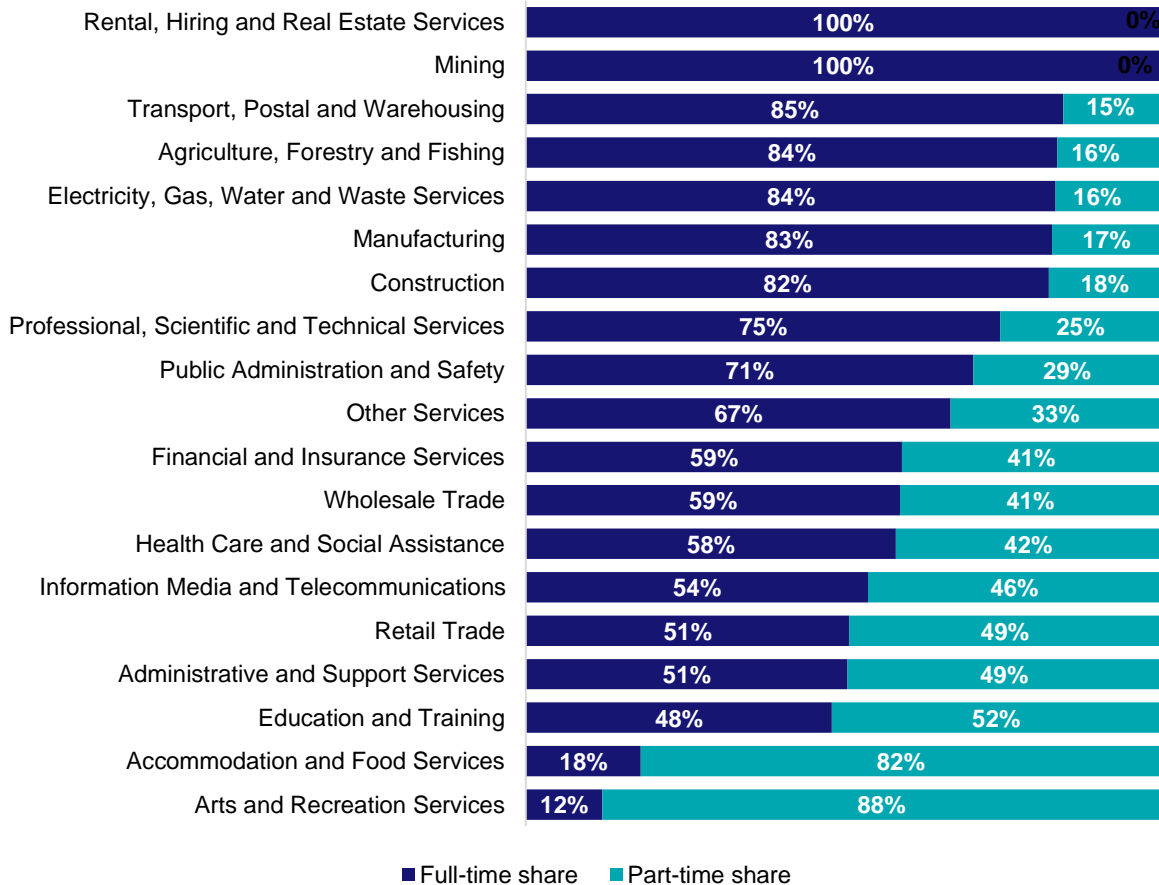
Source: ABS Census of Population and Housing, 2021. Note: SA2 level Census data have been aggregated to the Employment Region level.

## Gender share by industry



Source: ABS Labour Force Survey, Detailed, four quarter averages, February 2023.

## Full-time and part-time employment status by industry



Source: ABS Labour Force Survey, Detailed, four quarter averages, February 2023.

## Appendix

### Employment by industry, North West Country SA, February 2023

Industry (in order of size)	Share of employment in the region Feb-23 (%)	Employed ('000)			1 year change		5 year change		Full-time share %	Part-time share %	Median age *
		Feb-23	Feb-22	Feb-18	('000)	%	('000)	%			
Agriculture, Forestry and Fishing	11.8	5.1	2.2	5.9	2.9	135.0	-0.9	-14.9	83.8	16.2	41
Health Care and Social Assistance	11.5	4.9	6.2	6.6	-1.3	-21.1	-1.7	-25.7	58.3	41.7	43
Retail Trade	9.3	4.0	4.6	4.3	-0.6	-13.6	-0.3	-8.1	51.0	49.0	35
Education and Training	8.5	3.6	4.2	2.5	-0.6	-14.5	1.1	43.8	48.2	51.8	43
Accommodation and Food Services	8.2	3.5	3.3	2.5	0.2	6.9	1.0	40.1	18.1	81.9	28
Construction	7.7	3.3	4.0	3.1	-0.7	-17.9	0.2	5.8	82.5	17.5	40
Public Administration and Safety	6.5	2.8	4.1	3.5	-1.4	-33.0	-0.8	-21.6	70.6	29.4	45
Mining	6.2	2.6	4.9	1.7	-2.3	-46.0	0.9	52.8	100.0	0.0	41
Transport, Postal and Warehousing	5.7	2.5	1.6	2.0	0.9	56.3	0.5	24.9	84.8	15.2	49
Manufacturing	5.2	2.2	3.8	1.8	-1.6	-41.9	0.4	23.1	83.0	17.0	42
Other Services	4.2	1.8	2.4	1.6	-0.6	-23.3	0.3	16.9	67.0	33.0	38
Administrative and Support Services	4.0	1.7	0.8	0.6	0.9	104.2	1.1	167.1	50.7	49.3	43
Wholesale Trade	3.8	1.6	0.8	0.5	0.8	103.2	1.1	220.0	59.0	41.0	44
Professional, Scientific and Technical Services	2.7	1.1	0.5	0.5	0.7	133.5	0.7	149.6	74.8	25.2	41
Financial and Insurance Services	1.1	0.5	0.2	0.3	0.3	198.1	0.2	65.1	59.3	40.7	36
Arts and Recreation Services	1.1	0.5	0.3	0.6	0.2	86.4	-0.1	-20.0	12.1	87.9	46
Electricity, Gas, Water and Waste Services	1.1	0.5	0.2	0.3	0.2	102.7	0.2	53.6	83.5	16.5	44
Information Media and Telecommunications	0.9	0.4	0.1	0.0	0.3	376.4	0.4	-	53.9	46.1	43
Rental, Hiring and Real Estate Services	0.6	0.2	0.7	0.4	-0.4	-65.1	-0.1	-33.4	100.0	0.0	41
<b>All industries</b>	<b>100.0</b>	<b>42.7</b>	<b>44.7</b>	<b>38.7</b>	<b>-2.0</b>	<b>-4.5</b>	<b>4.0</b>	<b>10.4</b>	<b>65.0</b>	<b>35.0</b>	<b>41</b>

Source: ABS Labour Force Survey, Detailed, four quarter averages, February 2023. \*Median age is from the ABS Census of Population and Housing, 2021. Median age has been derived using aggregated SA2s for the Employment Region.

Note: Small cells should be viewed with caution due to small sample sizes and regional volatility.