



Industry profile

Northern Territory

Release date: 28 April 2023

Overview

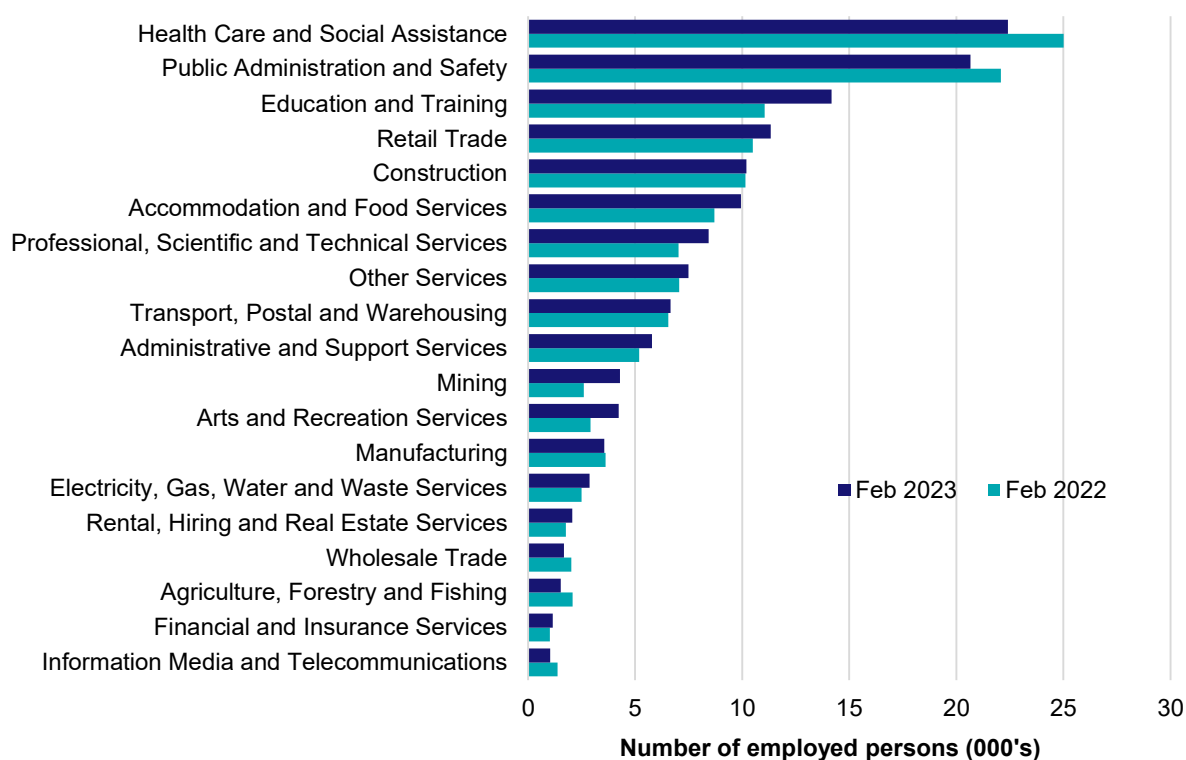
In February 2023, there were around 139,600 people employed in Northern Territory. The 5 largest employing industries in Northern Territory were Health Care and Social Assistance, Public Administration and Safety, Education and Training, Retail Trade and Construction. Together these 5 industries accounted for 56% of all employment.

Over the year to February 2023, employment in:

- Health Care and Social Assistance fell by 10.4% to stand at 22,400
- Public Administration and Safety fell by 6.4% to stand at 20,700
- Education and Training rose by 28.3% to stand at 14,200.

In Health Care and Social Assistance in Northern Territory, 76% of workers were employed full-time; 71% were Female; and the median age of the workforce was 38. Around 57% of employed persons in this industry were located in Greater Darwin.

Employment by industry, February 2023 and February 2022

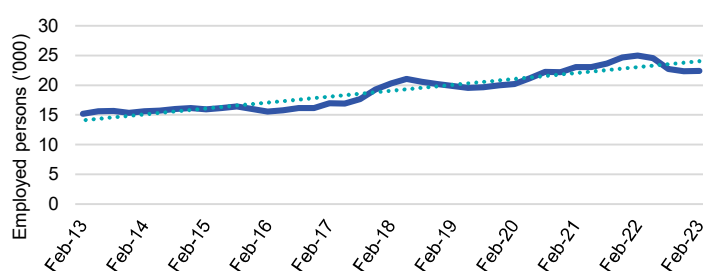


Source: ABS Labour Force Survey, Detailed, four quarter averages, February 2023. Note that total employment (four quarter averaged data) may not match data published in the Labour Market dashboards (6 month averaged data).

Note: For any enquiries related to the data in this report, contact RegionalWorkforceAssessment@jobsandskills.gov.au

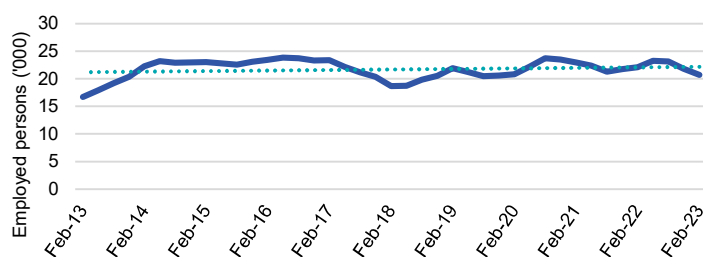
Five largest employing industries: key statistics

Health Care and Social Assistance



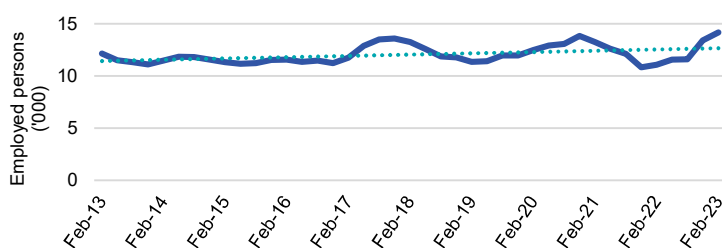
Number employed (Feb-23):	22,400
1 year employment change:	-10.4%
5 year employment change:	10.4%
10 year employment change:	47.2%
Youth share of employment:	10.1%
Mature age share of employment:	14.8%

Public Administration and Safety



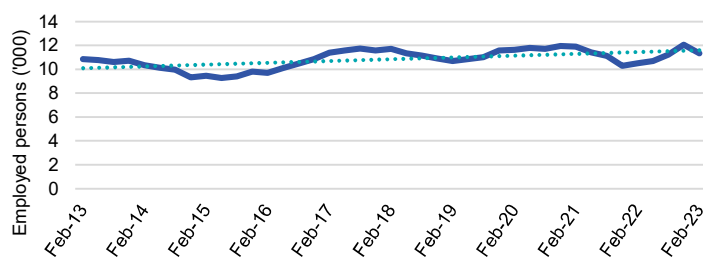
Number employed (Feb-23):	20,700
1 year employment change:	-6.4%
5 year employment change:	10.8%
10 year employment change:	23.8%
Youth share of employment:	15.1%
Mature age share of employment:	18.0%

Education and Training



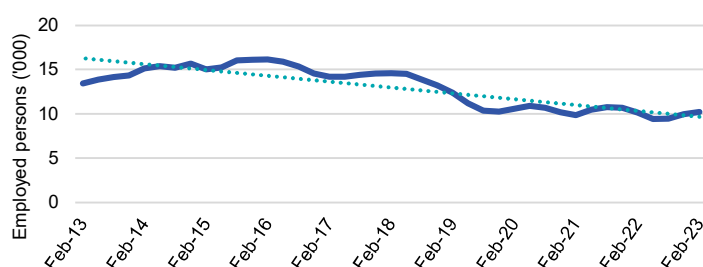
Number employed (Feb-23):	14,200
1 year employment change:	28.3%
5 year employment change:	7.0%
10 year employment change:	16.7%
Youth share of employment:	6.6%
Mature age share of employment:	11.8%

Retail Trade



Number employed (Feb-23):	11,300
1 year employment change:	8.0%
5 year employment change:	-3.3%
10 year employment change:	4.5%
Youth share of employment:	15.3%
Mature age share of employment:	6.3%

Construction



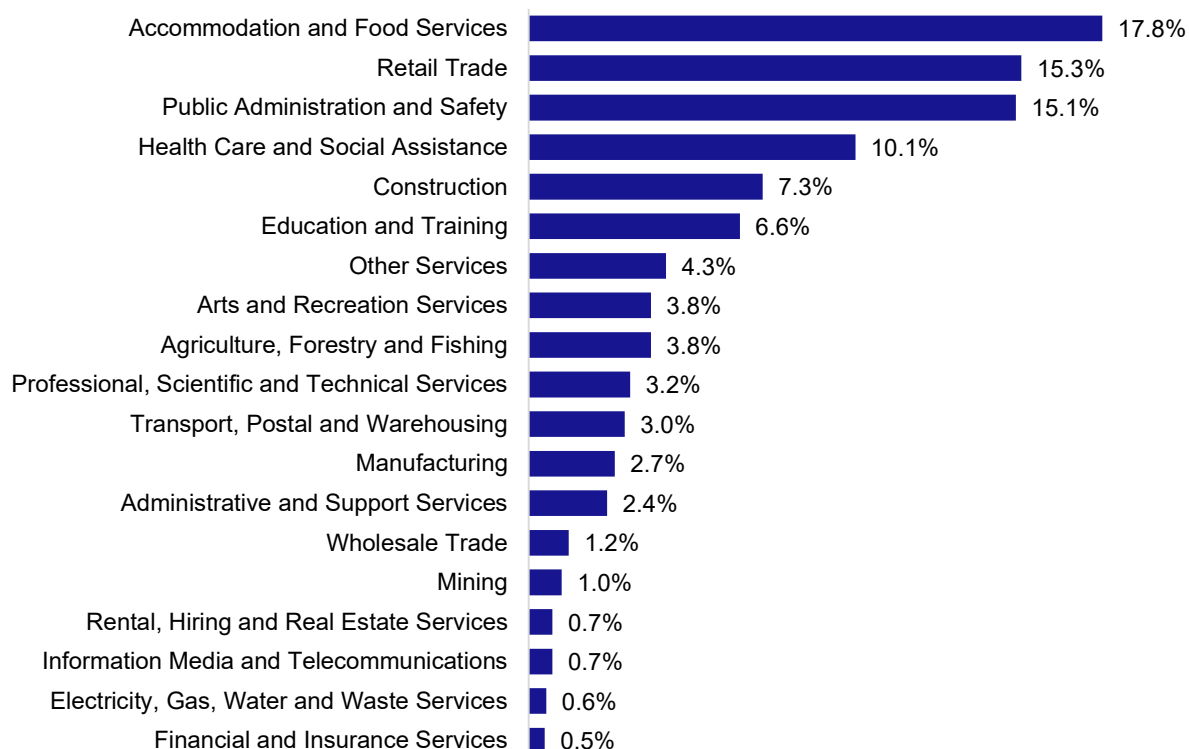
Number employed (Feb-23):	10,200
1 year employment change:	0.5%
5 year employment change:	-29.9%
10 year employment change:	-23.9%
Youth share of employment:	7.3%
Mature age share of employment:	8.4%

Source: ABS Labour Force Survey, Detailed, four quarter averages, February 2023, except youth and mature age data which are from the ABS Census of Population and Housing, 2021.

Note: In each chart, the solid line is the level of employment and the dotted line is a simple linear trend line for the 10 year period.

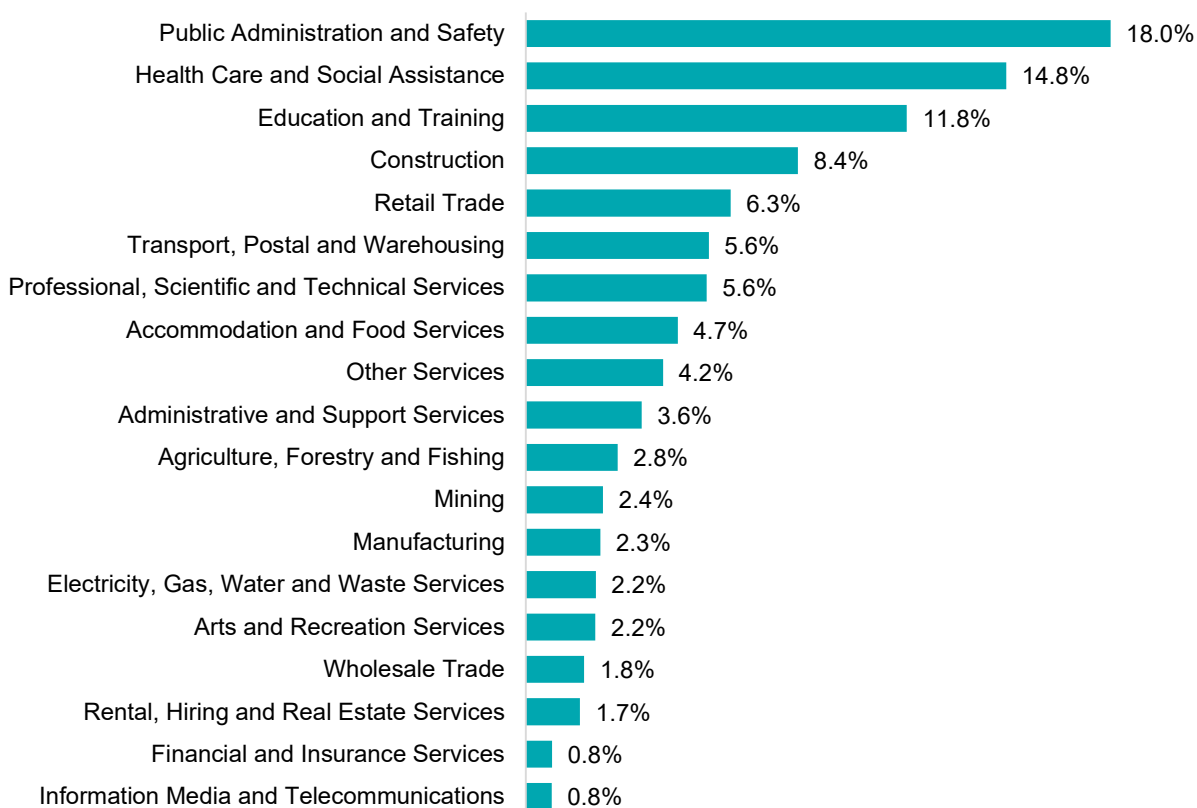
Employment characteristics by Industry

Which industries are youth (aged 15-24) employed in?



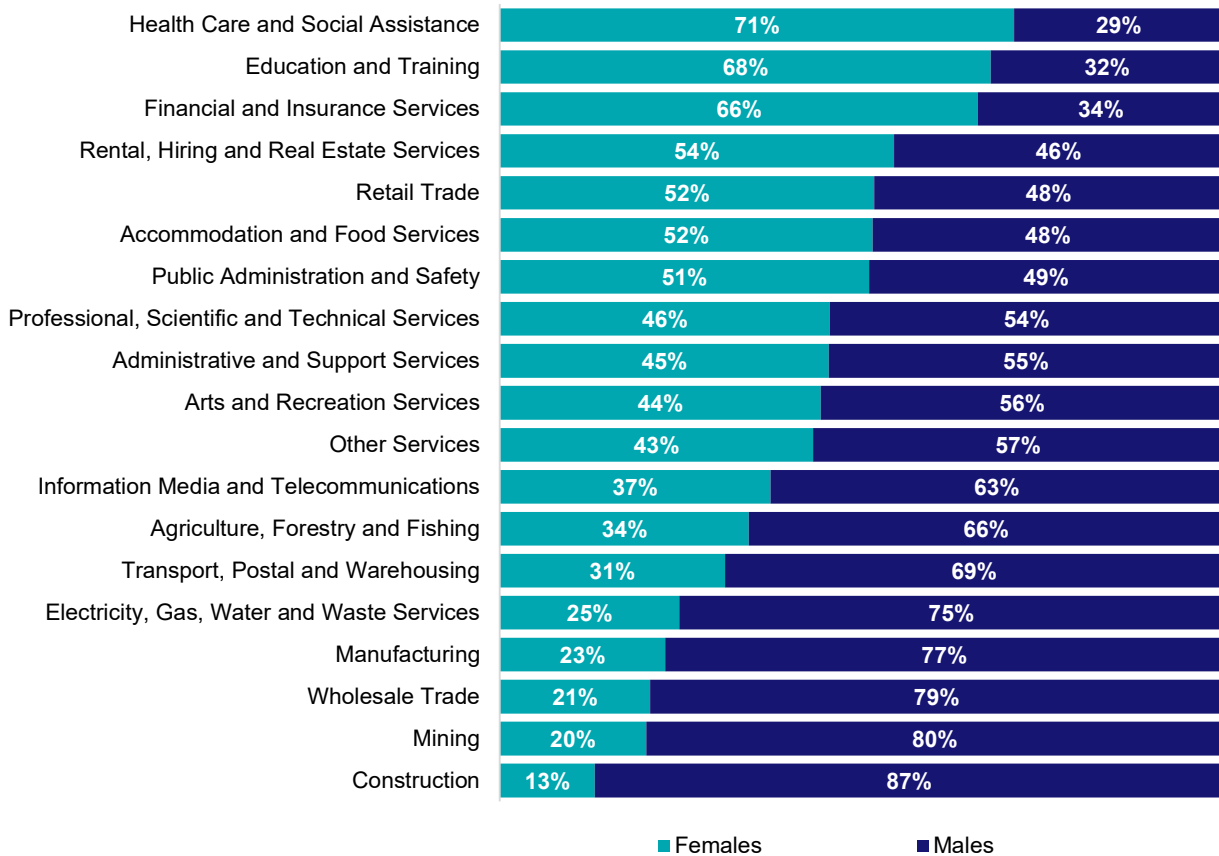
Source: ABS Census of Population and Housing, 2021.

Which industries are mature age persons (aged 55+) employed in?



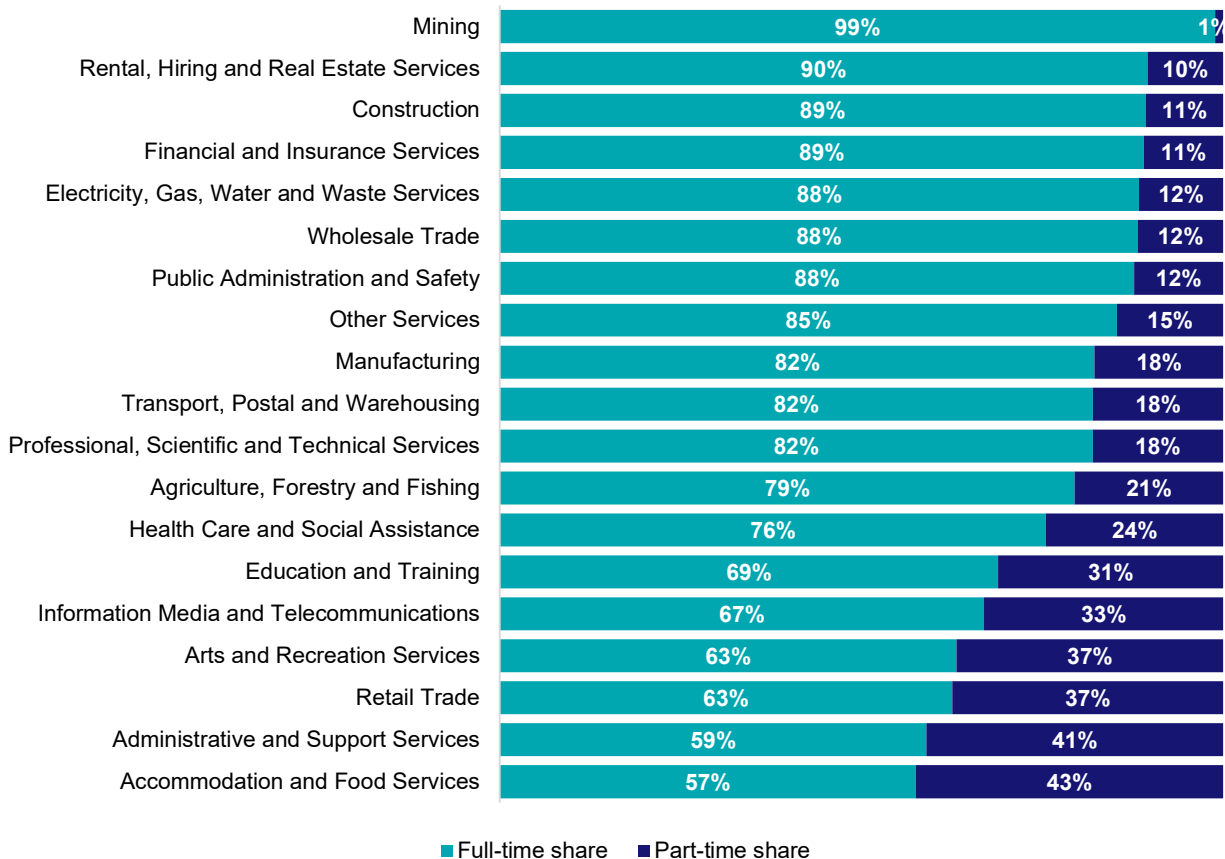
Source: ABS Census of Population and Housing, 2021.

Gender share by industry



Source: ABS Labour Force Survey, Detailed, four quarter averages, February 2023.

Full-time and part-time employment status by industry



Source: ABS Labour Force Survey, Detailed, four quarter averages, February 2023.

Appendix

Employment by industry, Northern Territory, February 2023

Industry (in order of size)	Share of emp't Feb-23 (%)	Share of emp't in Greater Darwin (%)	Share of emp't in Rest of NT (%)	Employed ('000)			1 year change		5 year change		Median age *
				Feb-23	Feb-22	Feb-18	('000)	%	('000)	%	
Health Care and Social Assistance	16.1	57.0	43.0	22.4	25.0	20.3	-2.6	-10.4	2.1	10.4	38
Public Administration and Safety	14.8	55.7	44.3	20.7	22.1	18.6	-1.4	-6.4	2.0	10.8	40
Education and Training	10.2	56.3	43.7	14.2	11.1	13.2	3.1	28.3	0.9	7.0	42
Retail Trade	8.1	58.4	41.6	11.3	10.5	11.7	0.8	8.0	-0.4	-3.3	33
Construction	7.3	64.2	35.8	10.2	10.2	14.6	0.1	0.5	-4.4	-29.9	39
Accommodation and Food Services	7.1	71.9	28.1	9.9	8.7	9.5	1.2	14.2	0.4	4.4	30
Professional, Scientific and Technical Services	6.0	72.8	27.2	8.4	7.0	7.0	1.4	20.0	1.5	21.1	39
Other Services	5.4	51.6	48.4	7.5	7.1	5.9	0.4	6.2	1.6	27.4	38
Transport, Postal and Warehousing	4.8	73.6	26.4	6.7	6.6	7.5	0.1	1.6	-0.8	-10.7	42
Administrative and Support Services	4.1	65.3	34.7	5.8	5.2	4.7	0.6	11.3	1.1	23.6	41
Mining	3.1	57.7	42.3	4.3	2.6	4.9	1.7	64.5	-0.6	-12.7	42
Arts and Recreation Services	3.0	60.9	39.1	4.2	2.9	3.8	1.3	45.5	0.4	10.8	35
Manufacturing	2.6	65.4	34.6	3.6	3.6	4.5	-0.1	-1.4	-0.9	-20.6	40
Electricity, Gas, Water and Waste Services	2.1	75.2	24.8	2.9	2.5	2.4	0.4	14.8	0.5	18.7	44
Rental, Hiring and Real Estate Services	1.5	71.9	28.1	2.1	1.8	2.5	0.3	16.9	-0.4	-15.8	43
Wholesale Trade	1.2	62.8	37.2	1.7	2.0	2.0	-0.3	-16.9	-0.3	-16.9	41
Agriculture, Forestry and Fishing	1.1	58.6	41.4	1.5	2.1	1.6	-0.6	-26.7	-0.1	-6.2	38
Financial and Insurance Services	0.8	89.4	10.6	1.2	1.0	1.8	0.1	12.7	-0.7	-35.9	39
Information Media and Telecommunications	0.7	57.9	42.1	1.0	1.4	1.3	-0.3	-24.8	-0.3	-20.8	38
All Industries	100.0	61.6	38.4	139.6	133.3	137.9	6.3	4.7	1.7	1.2	39

Source: ABS Labour Force Survey, Detailed, February 2023, four quarter averages. *Median age is from the ABS Census of Population and Housing, 2021.



Employment Region Industry profile

Darwin Employment Region

Release date: 28 April 2023

Overview

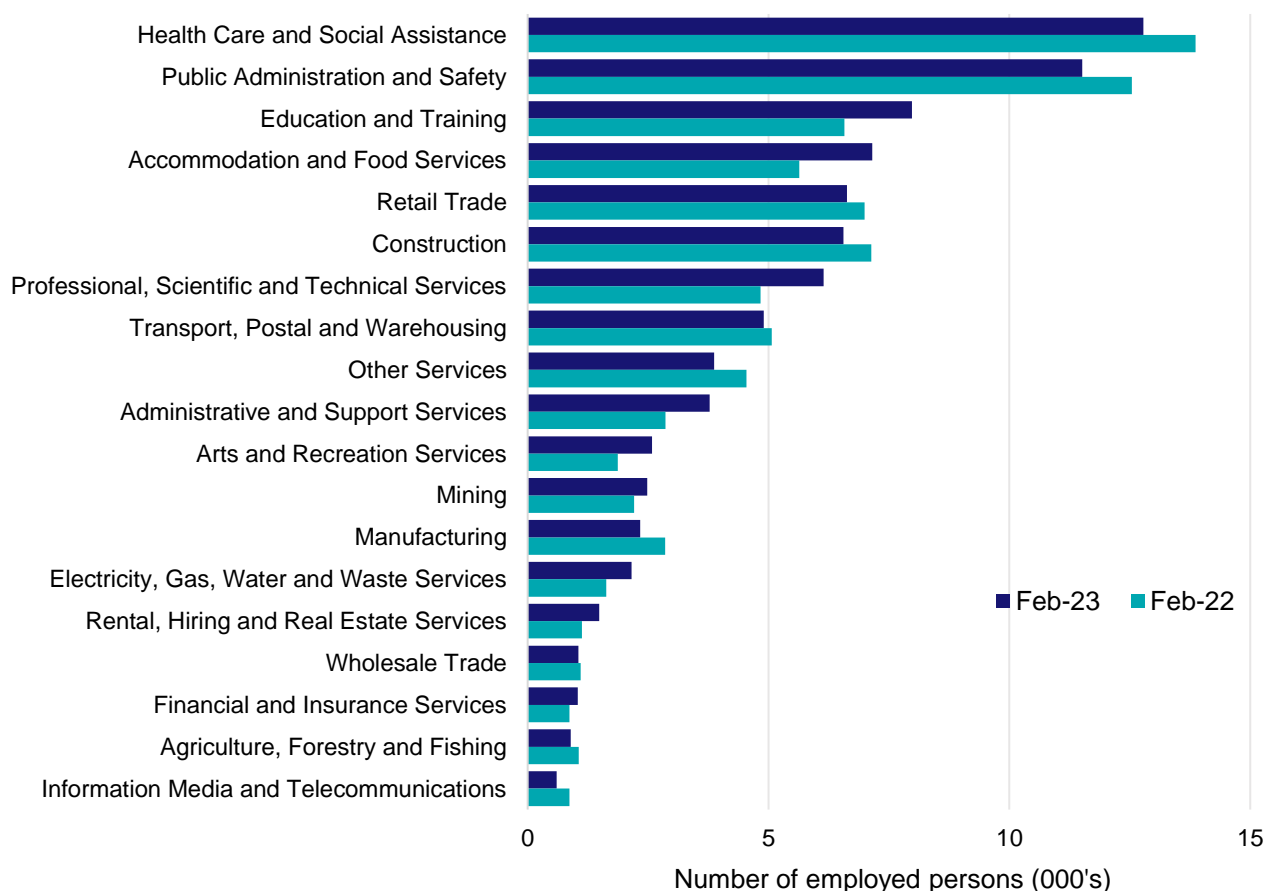
In February 2023, there were around 85,900 people employed in the Darwin Employment Region. The 5 largest employing industries in the region were Health Care and Social Assistance, Public Administration and Safety, Education and Training, Accommodation and Food Services, and Retail Trade. Together these 5 industries accounted for 54% of employment in the region.

Over the year to February 2023, employment in:

- Health Care and Social Assistance fell by 7.9% to stand at 12,800
- Public Administration and Safety fell by 8.2% to stand at 11,500
- Education and Training rose by 21.3% to stand at 8,000.

In Health Care and Social Assistance in the Darwin Employment Region, 78% of workers were employed full-time; 73% were female; and the median age of the workforce was 37.

Employment by industry, February 2023 and February 2022



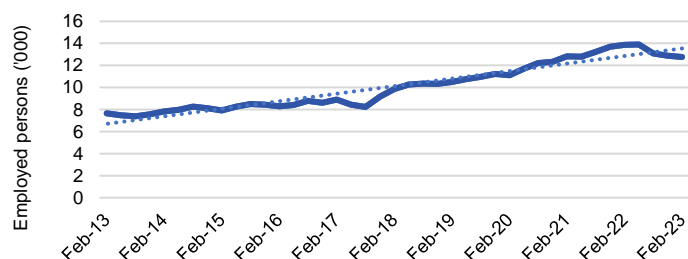
Source: ABS Labour Force Survey*, Detailed, four quarter averages, February 2023. Note that total employment for the region (four quarter averaged data) may not match data published in the Employment Region Labour Market dashboards (6 month averaged data).

*ABS Labour Force Survey data are based on the Darwin SA4.

Notes: Data are the latest available. Estimates should be treated with caution, as data can be volatile at a regional level. For any enquiries related to the data in this report, please contact RegionalWorkforceAssessment@jobsandskills.gov.au

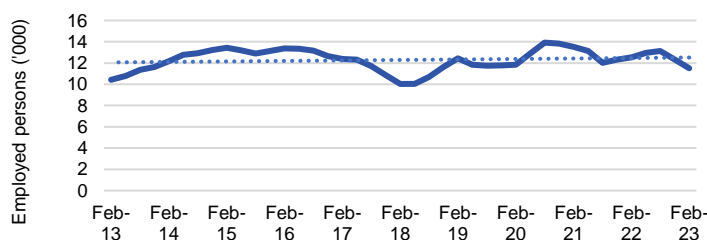
Five largest employing industries: key statistics

Health Care and Social Assistance



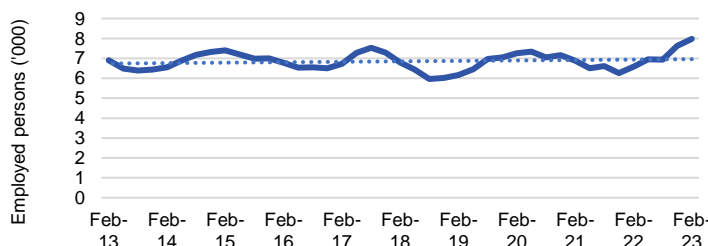
Number employed (Feb-23):	12,800
1 year employment change:	-7.9%
5 year employment change:	29.5%
10 year employment change:	67.2%
Youth share of employment:	10.4%
Mature age share of employment:	15.3%

Public Administration and Safety



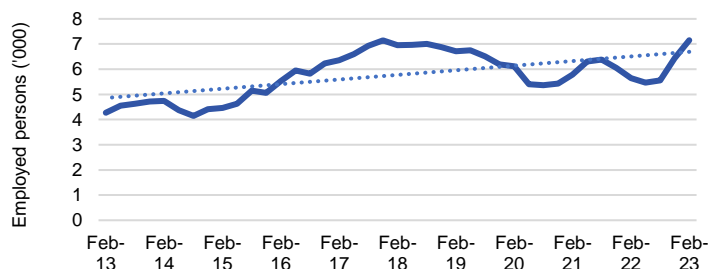
Number employed (Feb-23):	11,500
1 year employment change:	-8.2%
5 year employment change:	14.7%
10 year employment change:	10.5%
Youth share of employment:	16.7%
Mature age share of employment:	19.3%

Education and Training



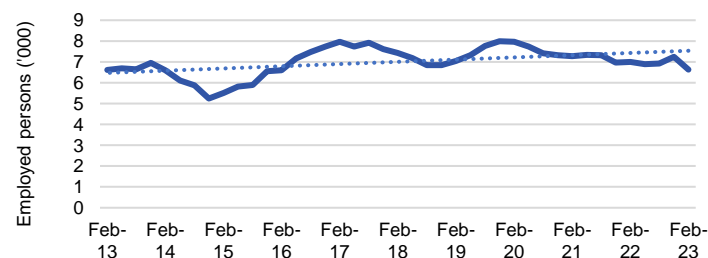
Number employed (Feb-23):	8,000
1 year employment change:	21.3%
5 year employment change:	17.5%
10 year employment change:	15.7%
Youth share of employment:	5.6%
Mature age share of employment:	11.5%

Accommodation and Food Services



Number employed (Feb-23):	7,200
1 year employment change:	26.8%
5 year employment change:	2.9%
10 year employment change:	67.4%
Youth share of employment:	19.6%
Mature age share of employment:	4.1%

Retail Trade



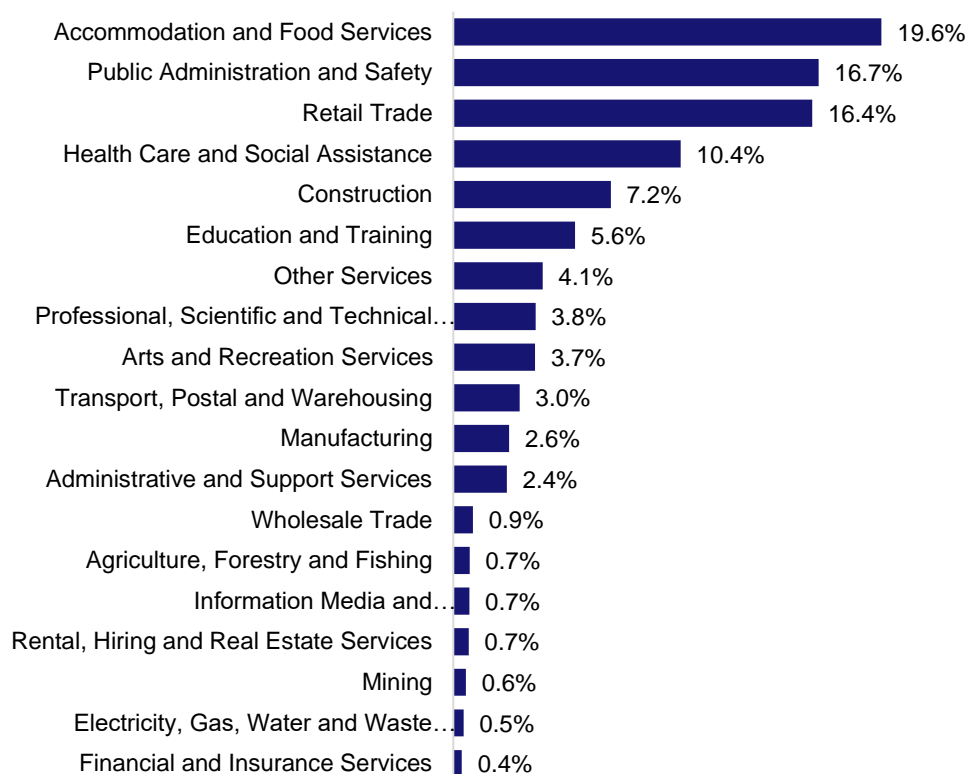
Number employed (Feb-23):	6,600
1 year employment change:	-5.2%
5 year employment change:	-10.8%
10 year employment change:	0.2%
Youth share of employment:	16.4%
Mature age share of employment:	6.3%

Source: ABS Labour Force Survey, Detailed, four quarter averages, February 2023, except youth and mature age data which are from the ABS Census of Population and Housing, 2021.

Note: In each chart, the solid line is the level of employment and the dotted line is a simple linear trend line for the 10 year period.

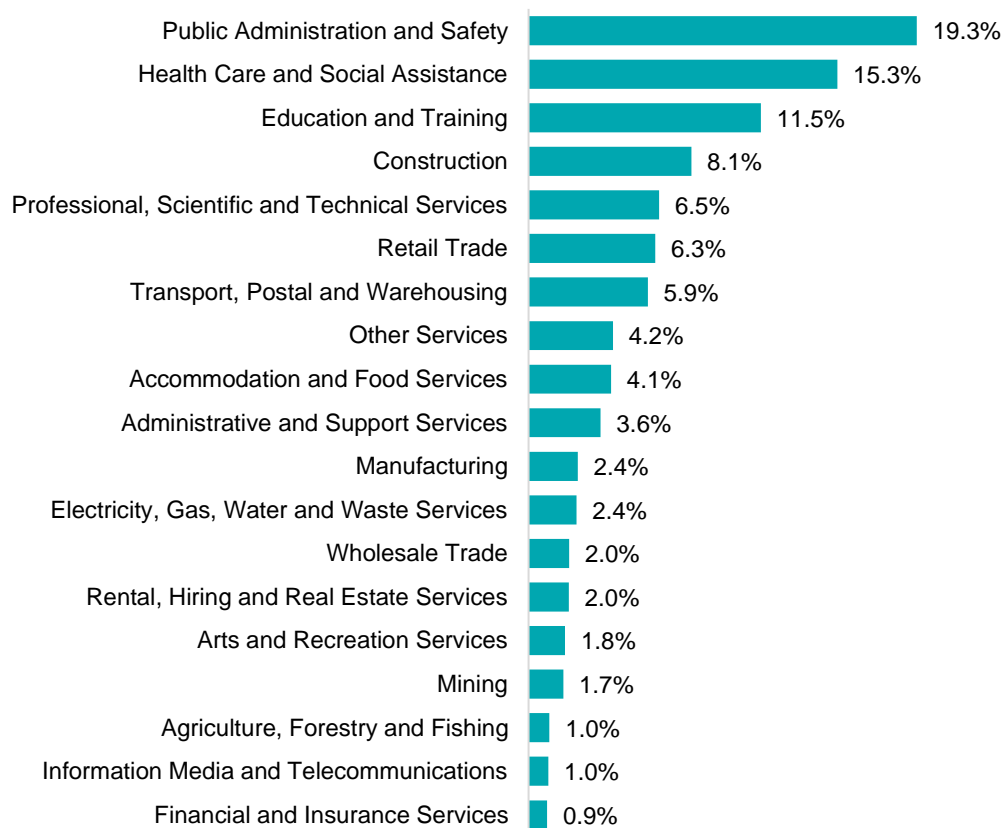
Employment characteristics by Industry

Which industries are youth (aged 15-24) employed in?



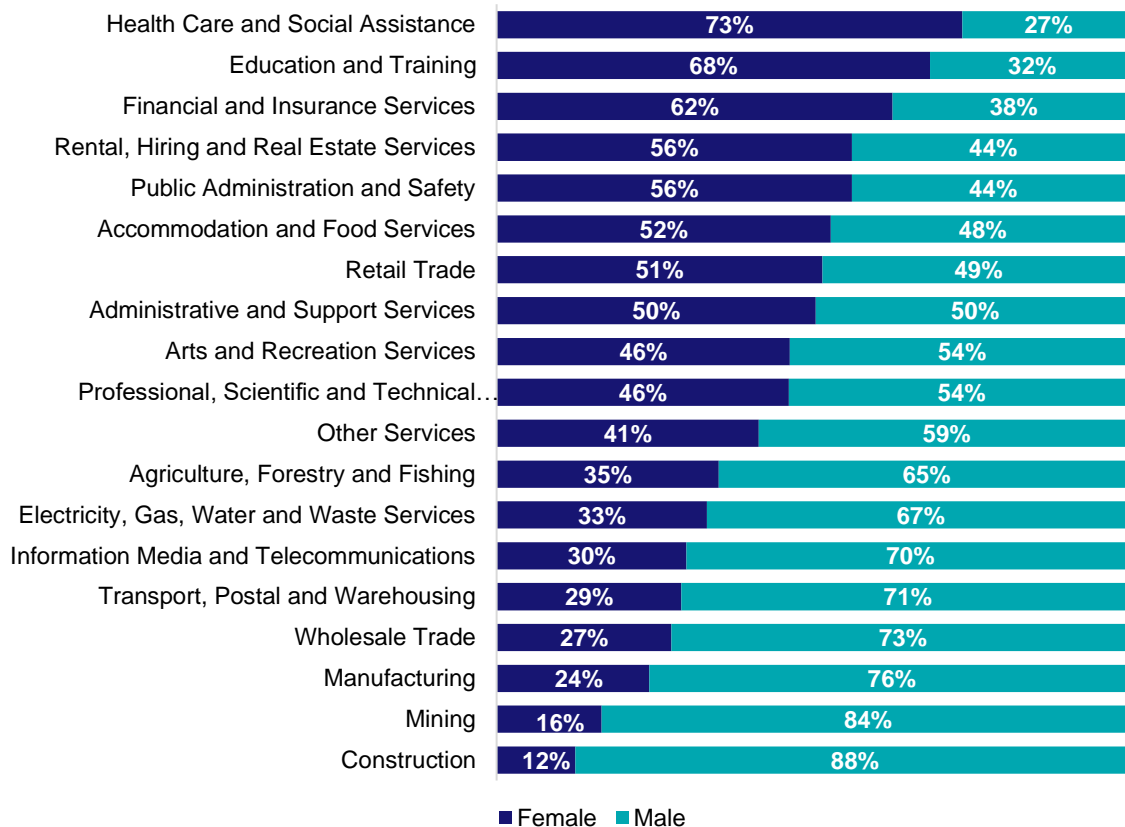
Source: ABS Census of Population and Housing, 2021.

Which industries are mature age persons (aged 55+) employed in?



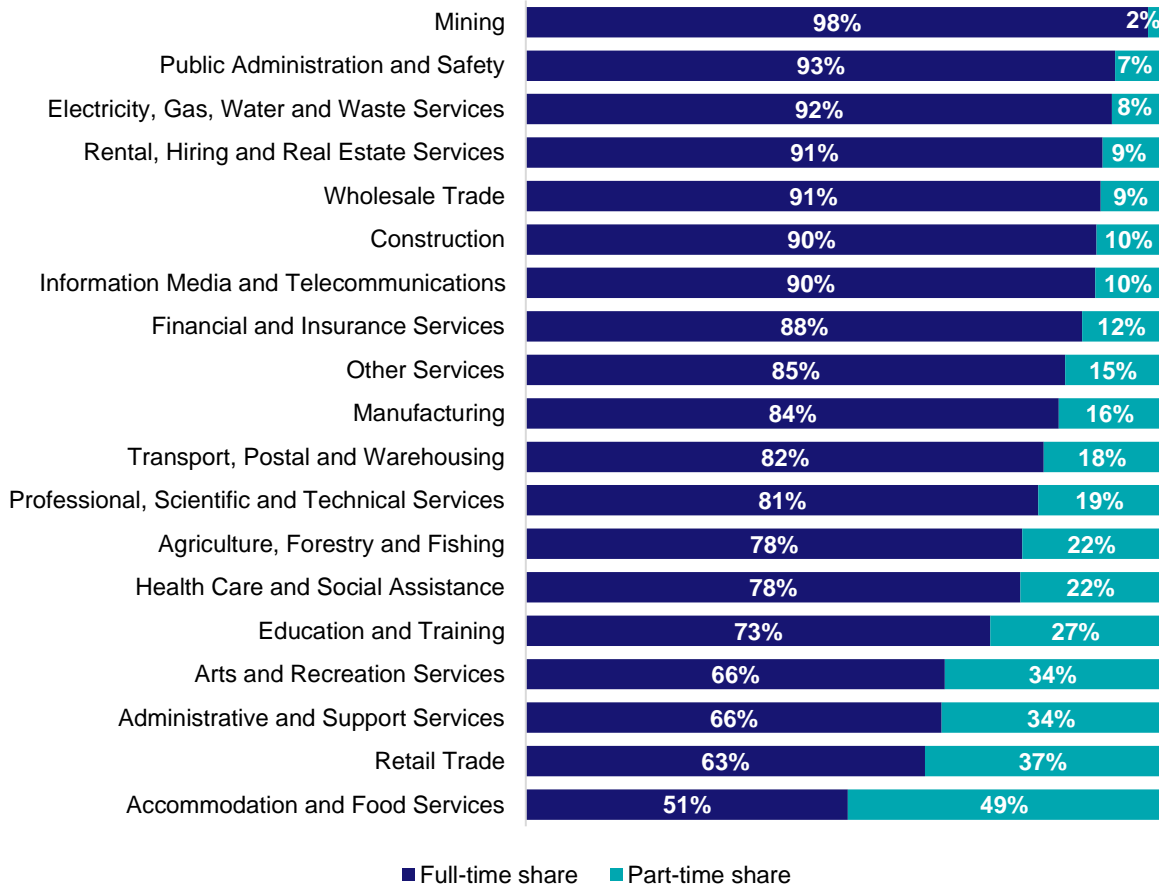
Source: ABS Census of Population and Housing, 2021. Note: SA2 level Census data have been aggregated to the Employment Region level.

Gender share by industry



Source: ABS Labour Force Survey, Detailed, four quarter averages, February 2023.

Full-time and part-time employment status by industry



Source: ABS Labour Force Survey, Detailed, four quarter averages, February 2023.

Appendix

Employment by industry, Darwin, February 2023

Industry (in order of size)	Share of employment in the region Feb-23 (%)	Employed ('000)			1 year change		5 year change		Full-time share %	Part-time share %	Median age *
		Feb-23	Feb-22	Feb-18	('000)	%	('000)	%			
Health Care and Social Assistance	14.9	12.8	13.9	9.9	-1.1	-7.9	2.9	29.5	78.0	22.0	37
Public Administration and Safety	13.4	11.5	12.5	10.0	-1.0	-8.2	1.5	14.7	92.9	7.1	39
Education and Training	9.3	8.0	6.6	6.8	1.4	21.3	1.2	17.5	73.3	26.7	42
Accommodation and Food Services	8.3	7.2	5.6	6.9	1.5	26.8	0.2	2.9	50.8	49.2	29
Retail Trade	7.7	6.6	7.0	7.4	-0.4	-5.2	-0.8	-10.8	62.9	37.1	31
Construction	7.6	6.6	7.1	11.0	-0.6	-8.2	-4.4	-40.3	90.0	10.0	38
Professional, Scientific and Technical Services	7.1	6.1	4.8	5.1	1.3	27.0	1.1	21.1	80.8	19.2	38
Transport, Postal and Warehousing	5.7	4.9	5.1	5.2	-0.2	-3.2	-0.3	-6.2	81.7	18.3	38
Other Services	4.5	3.9	4.5	3.5	-0.7	-14.8	0.4	11.7	85.1	14.9	37
Administrative and Support Services	4.4	3.8	2.9	2.7	0.9	32.0	1.1	41.4	65.6	34.4	40
Arts and Recreation Services	3.0	2.6	1.9	2.3	0.7	38.1	0.3	14.5	66.0	34.0	30
Mining	2.9	2.5	2.2	3.1	0.3	12.1	-0.7	-21.0	98.1	1.9	41
Manufacturing	2.7	2.3	2.9	3.4	-0.5	-18.1	-1.1	-31.6	84.1	15.9	39
Electricity, Gas, Water and Waste Services	2.5	2.2	1.6	1.9	0.5	32.1	0.3	13.5	92.4	7.6	41
Rental, Hiring and Real Estate Services	1.7	1.5	1.1	1.8	0.4	32.2	-0.3	-17.4	90.9	9.1	43
Wholesale Trade	1.2	1.1	1.1	1.3	0.0	-4.1	-0.2	-18.4	90.6	9.4	38
Financial and Insurance Services	1.2	1.0	0.9	1.5	0.2	19.5	-0.5	-30.8	87.7	12.3	36
Agriculture, Forestry and Fishing	1.0	0.9	1.1	1.1	-0.2	-15.4	-0.2	-15.2	78.3	21.7	42
Information Media and Telecommunications	0.7	0.6	0.9	1.1	-0.3	-30.8	-0.5	-44.5	89.8	10.2	35
All industries	100.0	85.9	83.6	85.9	2.3	2.7	0.0	0.0	78.6	21.4	37

Source: ABS Labour Force Survey, Detailed, four quarter averages, February 2023. *Median age is from the ABS Census of Population and Housing, 2021. Median age has been derived using aggregated SA2s for the Employment Region.

Note: Small cells should be viewed with caution due to small sample sizes and regional volatility.