



Industry profile

Australian Capital Territory

Release date: 28 April 2023

Overview

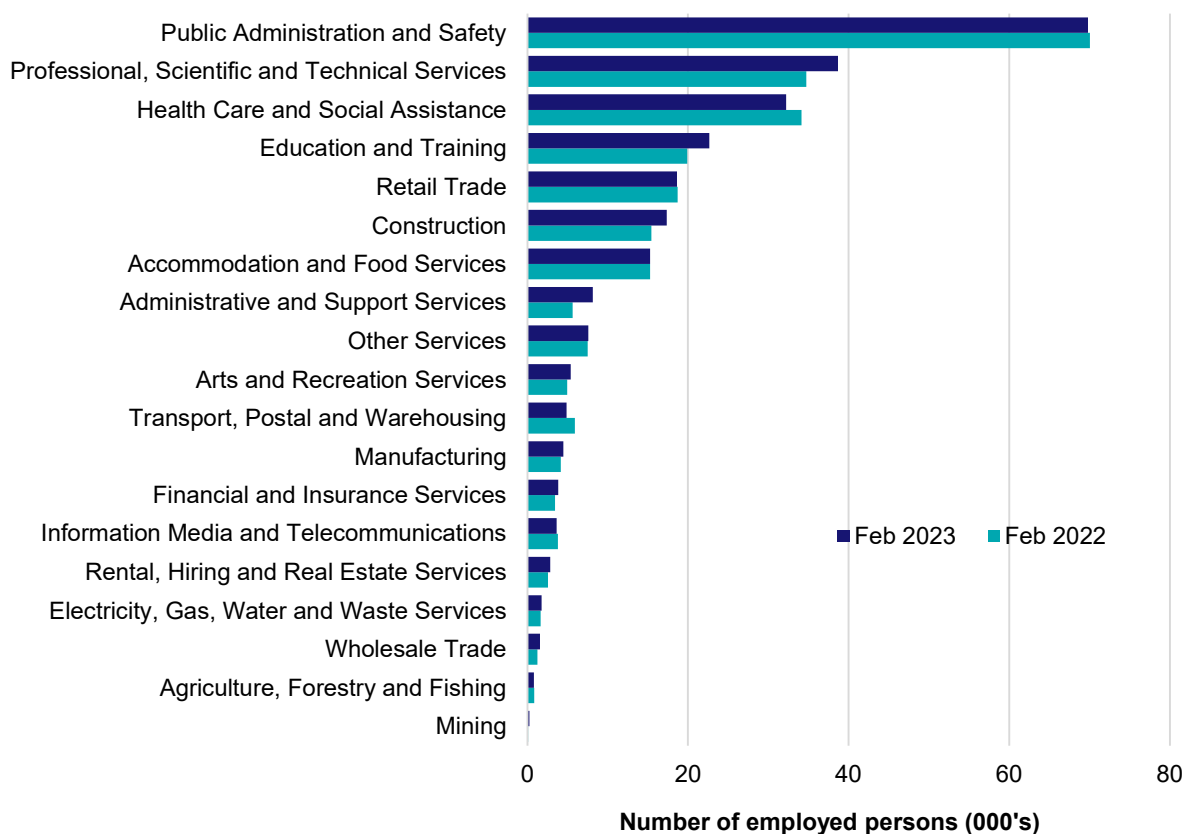
In February 2023, there were around 260,000 people employed in Australian Capital Territory. The 5 largest employing industries in Australian Capital Territory were Public Administration and Safety, Professional, Scientific and Technical Services, Health Care and Social Assistance, Education and Training and Retail Trade. Together these 5 industries accounted for 70% of all employment.

Over the year to February 2023, employment in:

- Public Administration and Safety fell by 0.3% to stand at 69,800
- Professional, Scientific and Technical Services rose by 11.5% to stand at 38,700
- Health Care and Social Assistance fell by 5.6% to stand at 32,200.

In Public Administration and Safety in Australian Capital Territory, 89% of workers were employed full-time; 53% were Female; and the median age of the workforce was 41.

Employment by industry, February 2023 and February 2022

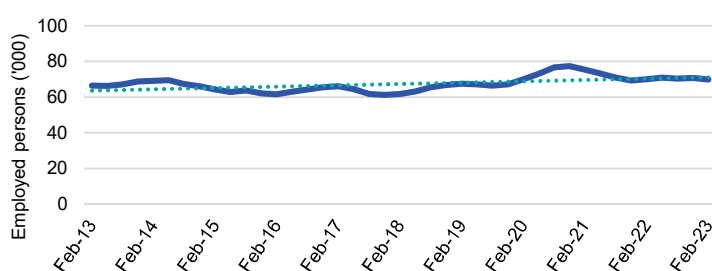


Source: ABS Labour Force Survey, Detailed, four quarter averages, February 2023. Note that total employment (four quarter averaged data) may not match data published in the Labour Market dashboards (6 month averaged data).

Note: For any enquiries related to the data in this report, contact RegionalWorkforceAssessment@jobsandskills.gov.au

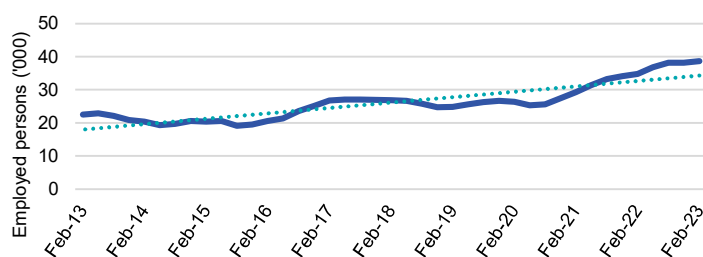
Five largest employing industries: key statistics

Public Administration and Safety



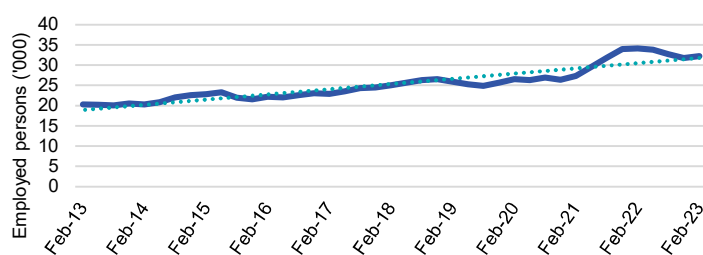
| | |
|---------------------------------|--------|
| Number employed (Feb-23): | 69,800 |
| 1 year employment change: | -0.3% |
| 5 year employment change: | 13.1% |
| 10 year employment change: | 5.1% |
| Youth share of employment: | 14.0% |
| Mature age share of employment: | 29.9% |

Professional, Scientific and Technical Services



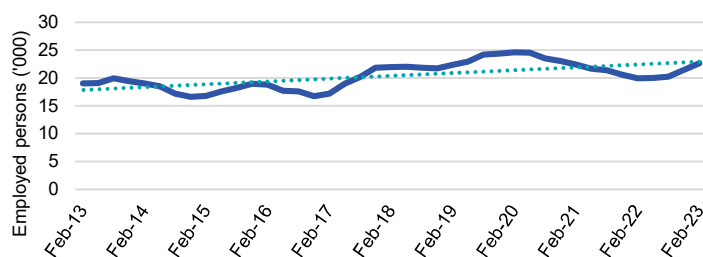
| | |
|---------------------------------|--------|
| Number employed (Feb-23): | 38,700 |
| 1 year employment change: | 11.5% |
| 5 year employment change: | 44.0% |
| 10 year employment change: | 71.9% |
| Youth share of employment: | 7.4% |
| Mature age share of employment: | 11.4% |

Health Care and Social Assistance



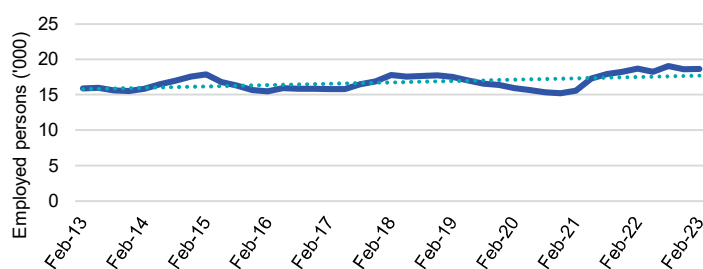
| | |
|---------------------------------|--------|
| Number employed (Feb-23): | 32,200 |
| 1 year employment change: | -5.6% |
| 5 year employment change: | 28.7% |
| 10 year employment change: | 58.6% |
| Youth share of employment: | 9.3% |
| Mature age share of employment: | 13.2% |

Education and Training



| | |
|---------------------------------|--------|
| Number employed (Feb-23): | 22,700 |
| 1 year employment change: | 13.8% |
| 5 year employment change: | 3.2% |
| 10 year employment change: | 19.1% |
| Youth share of employment: | 8.6% |
| Mature age share of employment: | 11.4% |

Retail Trade



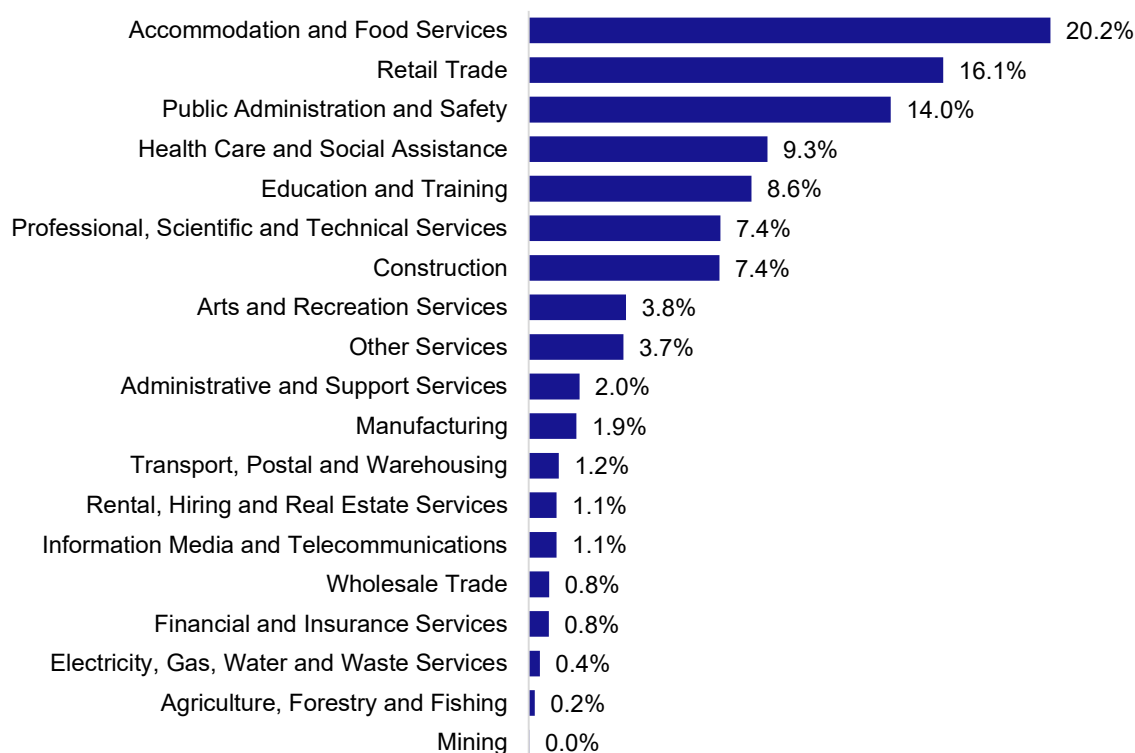
| | |
|---------------------------------|--------|
| Number employed (Feb-23): | 18,600 |
| 1 year employment change: | -0.3% |
| 5 year employment change: | 4.8% |
| 10 year employment change: | 17.3% |
| Youth share of employment: | 16.1% |
| Mature age share of employment: | 5.0% |

Source: ABS Labour Force Survey, Detailed, four quarter averages, February 2023, except youth and mature age data which are from the ABS Census of Population and Housing, 2021.

Note: In each chart, the solid line is the level of employment and the dotted line is a simple linear trend line for the 10 year period.

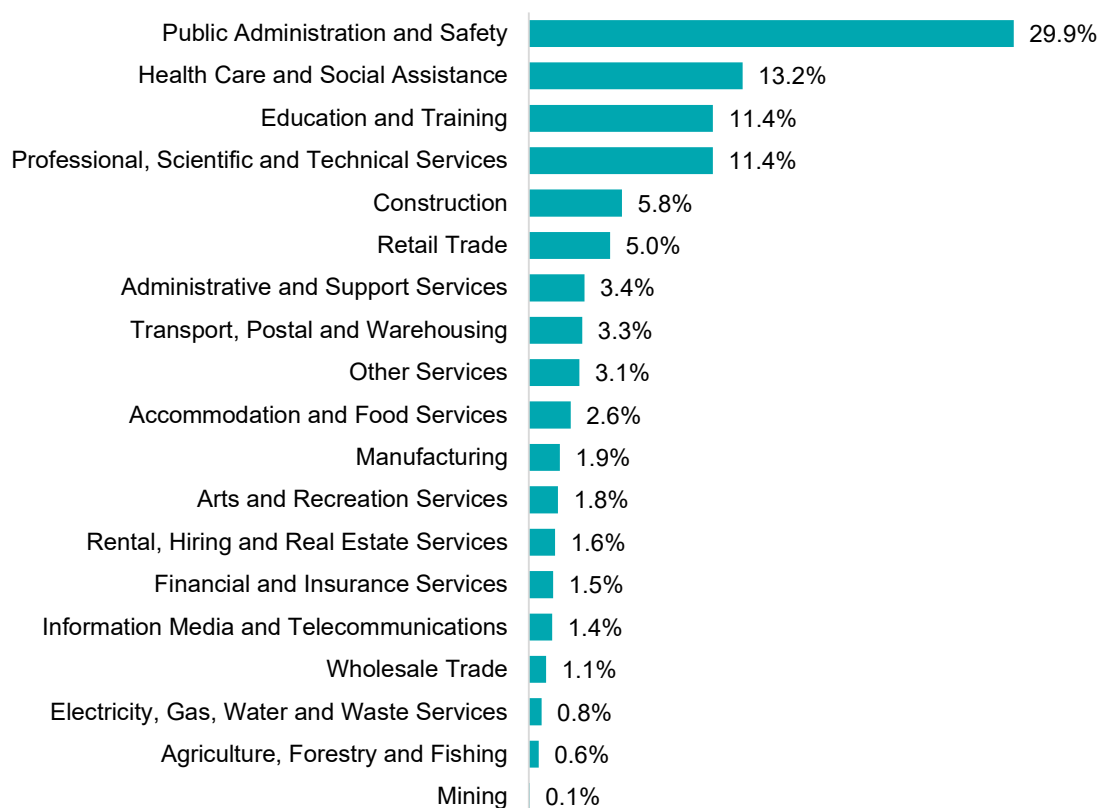
Employment characteristics by Industry

Which industries are youth (aged 15-24) employed in?



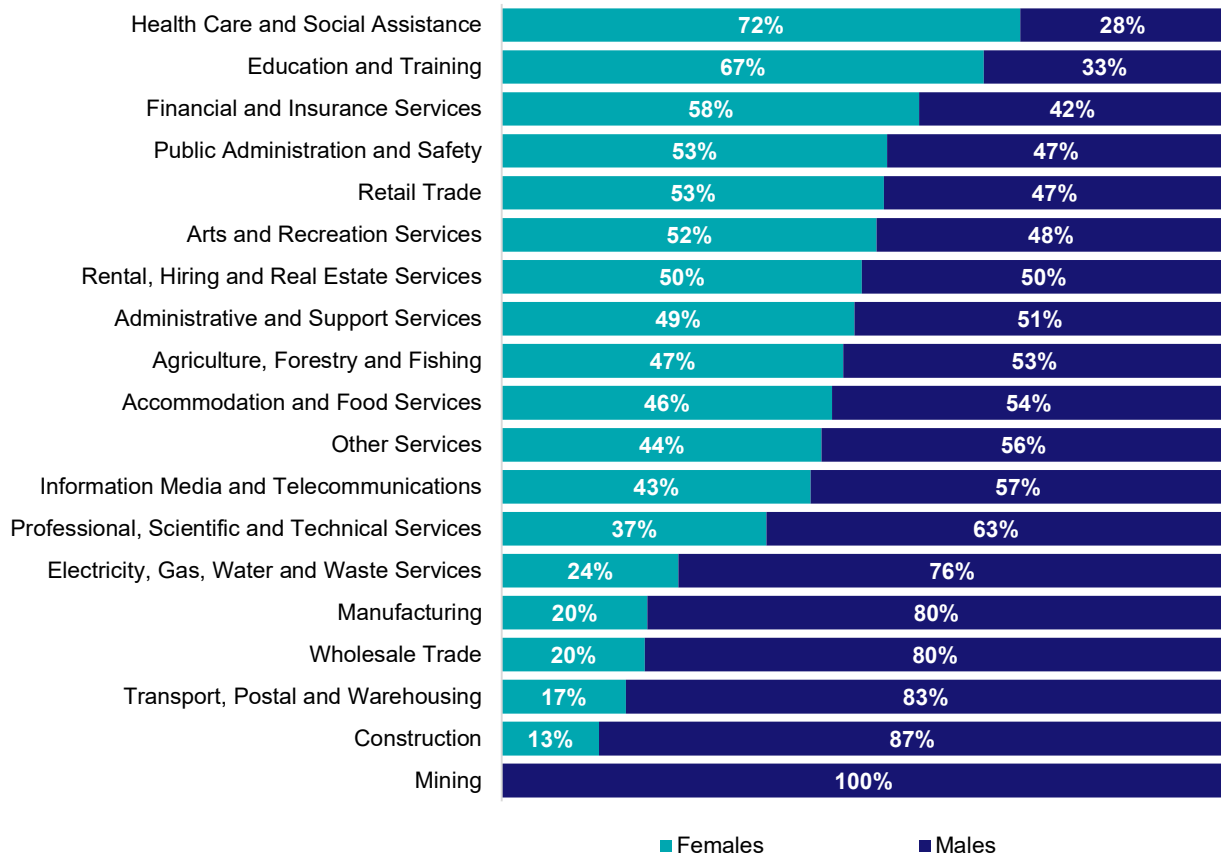
Source: ABS Census of Population and Housing, 2021.

Which industries are mature age persons (aged 55+) employed in?



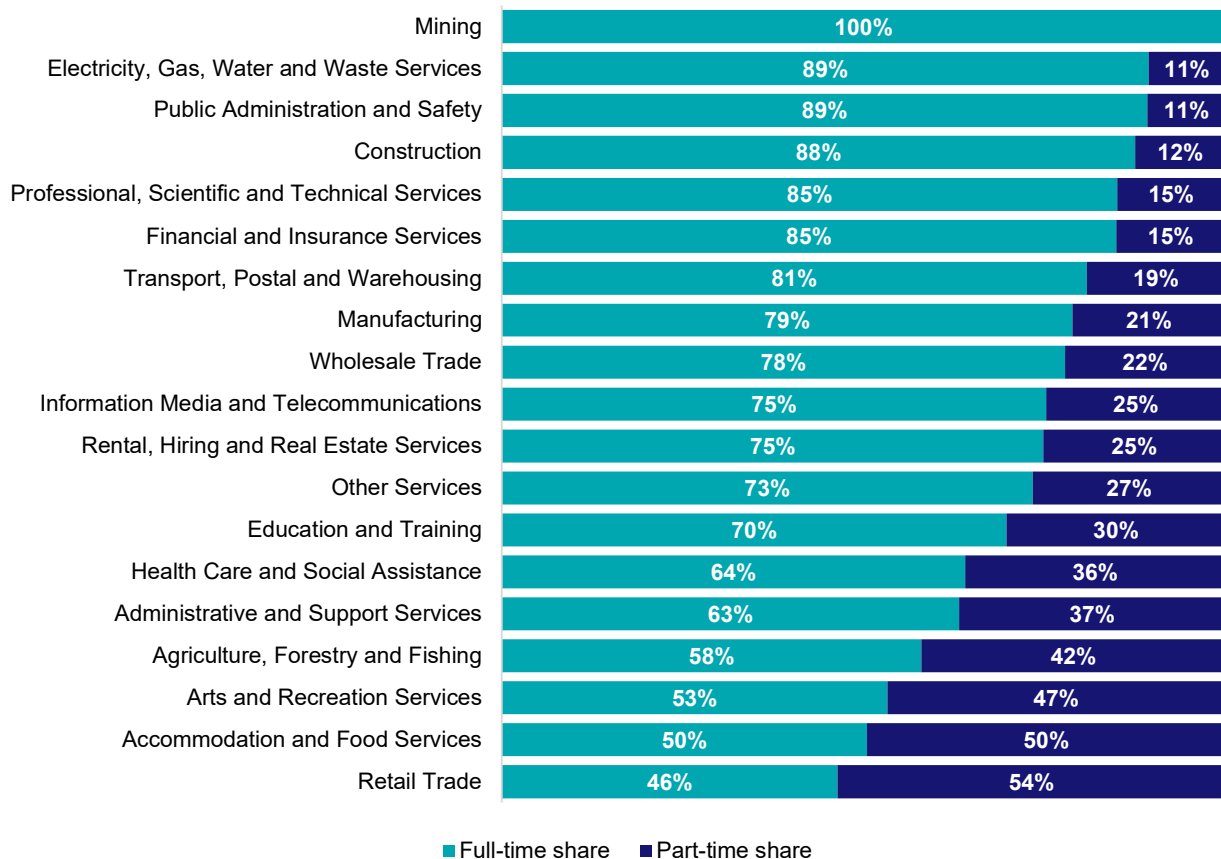
Source: ABS Census of Population and Housing, 2021.

Gender share by industry



Source: ABS Labour Force Survey, Detailed, four quarter averages, February 2023.

Full-time and part-time employment status by industry



Source: ABS Labour Force Survey, Detailed, four quarter averages, February 2023.

Appendix

Employment by industry, Australian Capital Territory, February 2023

| Industry (in order of size) | Share of emp't Feb-23 (%) | Employed ('000) | | | 1 year change | | 5 year change | | Median age * |
|---|------------------------------|-----------------|--------------|--------------|---------------|------------|---------------|-------------|--------------|
| | | Feb-23 | Feb-22 | Feb-18 | ('000) | % | ('000) | % | |
| Public Administration and Safety | 26.9 | 69.8 | 70.0 | 61.7 | -0.2 | -0.3 | 8.1 | 13.1 | 41 |
| Professional, Scientific and Technical Services | 14.9 | 38.7 | 34.7 | 26.9 | 4.0 | 11.5 | 11.8 | 44.0 | 38 |
| Health Care and Social Assistance | 12.4 | 32.2 | 34.1 | 25.0 | -1.9 | -5.6 | 7.2 | 28.7 | 38 |
| Education and Training | 8.7 | 22.7 | 19.9 | 22.0 | 2.7 | 13.8 | 0.7 | 3.2 | 40 |
| Retail Trade | 7.2 | 18.6 | 18.7 | 17.8 | -0.1 | -0.3 | 0.9 | 4.8 | 28 |
| Construction | 6.7 | 17.4 | 15.4 | 15.7 | 1.9 | 12.4 | 1.6 | 10.4 | 35 |
| Accommodation and Food Services | 5.9 | 15.3 | 15.3 | 18.6 | 0.0 | 0.0 | -3.3 | -17.6 | 25 |
| Administrative and Support Services | 3.1 | 8.2 | 5.6 | 6.2 | 2.5 | 44.4 | 2.0 | 32.3 | 39 |
| Other Services | 2.9 | 7.6 | 7.5 | 7.2 | 0.1 | 0.9 | 0.4 | 5.6 | 36 |
| Arts and Recreation Services | 2.1 | 5.4 | 5.0 | 5.9 | 0.4 | 8.3 | -0.5 | -9.0 | 32 |
| Transport, Postal and Warehousing | 1.9 | 4.9 | 5.9 | 5.0 | -1.0 | -17.5 | -0.1 | -2.2 | 41 |
| Manufacturing | 1.7 | 4.5 | 4.2 | 4.4 | 0.3 | 7.7 | 0.1 | 1.9 | 38 |
| Financial and Insurance Services | 1.5 | 3.9 | 3.4 | 3.6 | 0.4 | 12.1 | 0.2 | 6.8 | 39 |
| Information Media and Telecommunications | 1.4 | 3.7 | 3.8 | 4.2 | -0.2 | -4.1 | -0.6 | -13.2 | 39 |
| Rental, Hiring and Real Estate Services | 1.1 | 2.8 | 2.6 | 2.4 | 0.2 | 9.6 | 0.4 | 16.5 | 38 |
| Electricity, Gas, Water and Waste Services | 0.7 | 1.8 | 1.6 | 2.1 | 0.1 | 7.5 | -0.3 | -16.2 | 39 |
| Wholesale Trade | 0.6 | 1.6 | 1.3 | 2.1 | 0.3 | 27.0 | -0.6 | -25.9 | 40 |
| Agriculture, Forestry and Fishing | 0.3 | 0.8 | 0.8 | 0.6 | 0.0 | -1.6 | 0.2 | 38.5 | 41 |
| Mining | 0.1 | 0.3 | 0.1 | 0.0 | 0.2 | 127.6 | 0.2 | NA | 43 |
| All Industries | 100.0 | 260.0 | 250.2 | 231.4 | 9.8 | 3.9 | 28.6 | 12.3 | 38 |

Source: ABS Labour Force Survey, Detailed, four quarter averages, February 2023. *Median age is from the ABS Census of Population and Housing, 2021.



Employment Region Industry profile

Capital Region Employment Region

Release date: 28 April 2023

Overview

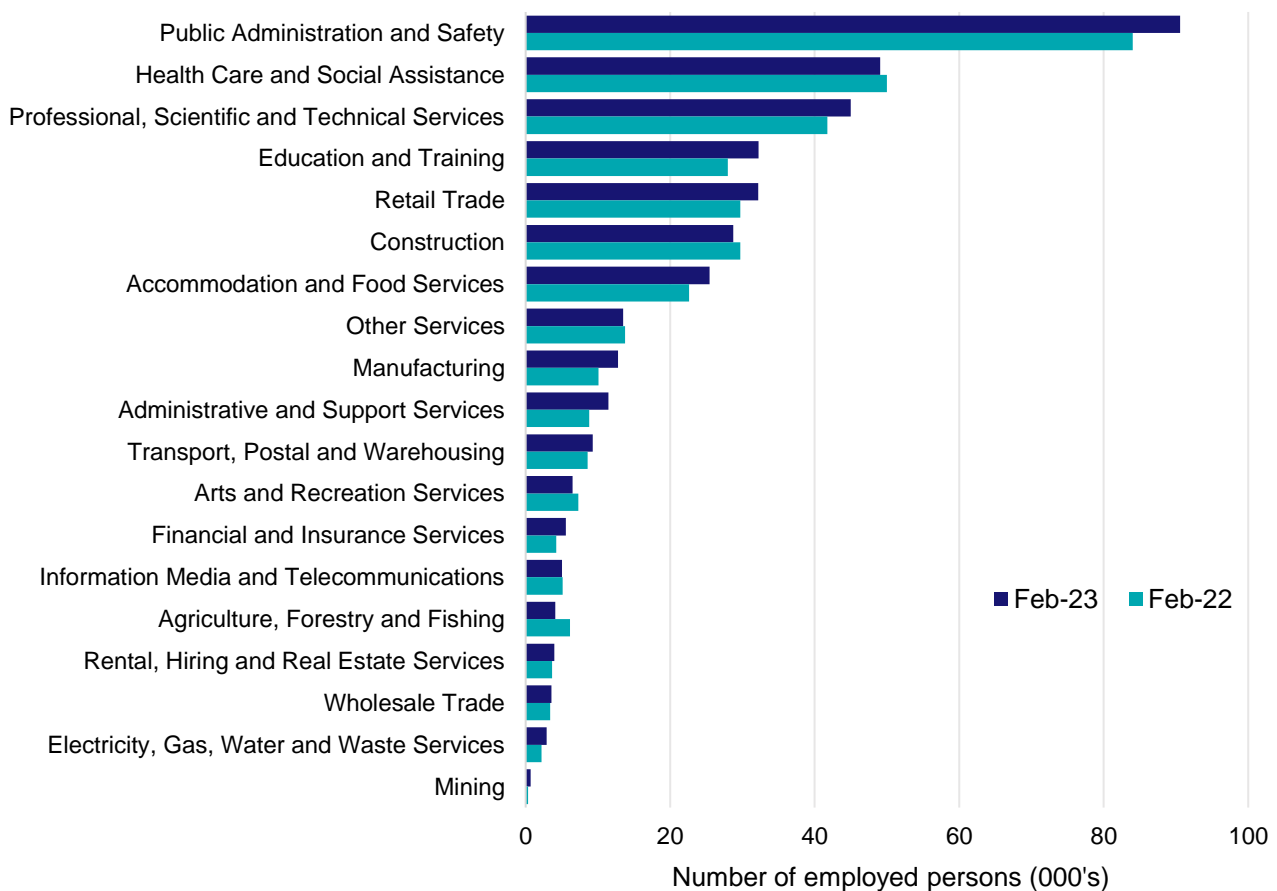
In February 2023, there were around 382,400 people employed in the Capital Region Employment Region. The 5 largest employing industries in the region were Public Administration and Safety, Health Care and Social Assistance, Professional, Scientific and Technical Services, Education and Training, and Retail Trade. Together these 5 industries accounted for 65% of employment in the region.

Over the year to February 2023, employment in:

- Public Administration and Safety rose by 7.8% to stand at 90,600
- Health Care and Social Assistance fell by 1.8% to stand at 49,100
- Professional, Scientific and Technical Services rose by 7.7% to stand at 45,000.

In Public Administration and Safety in the Capital Region Employment Region, 88% of workers were employed full-time; 53% were female; and the median age of the workforce was 41.

Employment by industry, February 2023 and February 2022



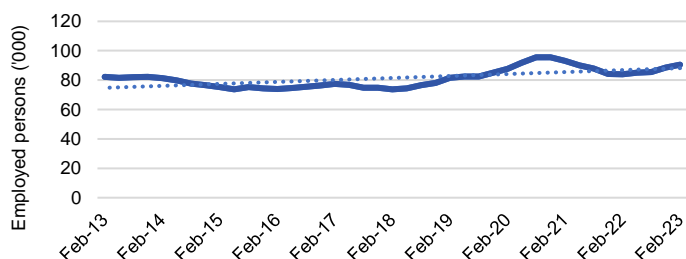
Source: ABS Labour Force Survey*, Detailed, four quarter averages, February 2023. Note that total employment for the region (four quarter averaged data) may not match data published in the Employment Region Labour Market dashboards (6 month averaged data).

*ABS Labour Force Survey data are based on the combined SA4s of Australian Capital Territory and Capital Region.

Notes: Data are the latest available. Estimates should be treated with caution, as data can be volatile at a regional level. For any enquiries related to the data in this report, please contact RegionalWorkforceAssessment@jobsandskills.gov.au

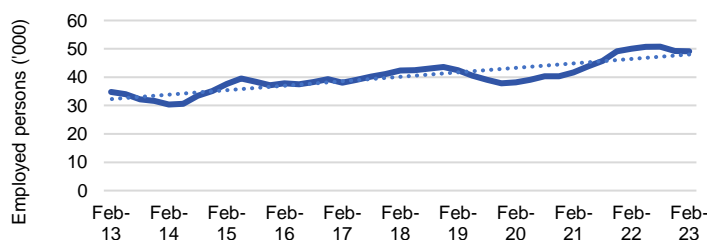
Five largest employing industries: key statistics

Public Administration and Safety



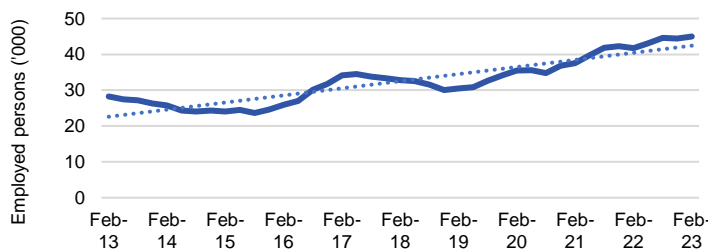
| | |
|---------------------------------|--------|
| Number employed (Feb-23): | 90,600 |
| 1 year employment change: | 7.8% |
| 5 year employment change: | 22.9% |
| 10 year employment change: | 10.1% |
| Youth share of employment: | 12.4% |
| Mature age share of employment: | 25.0% |

Health Care and Social Assistance



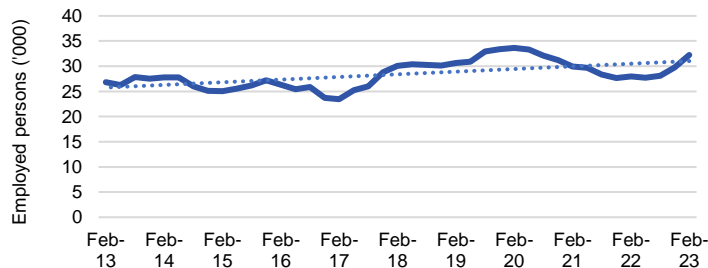
| | |
|---------------------------------|--------|
| Number employed (Feb-23): | 49,100 |
| 1 year employment change: | -1.8% |
| 5 year employment change: | 15.8% |
| 10 year employment change: | 41.1% |
| Youth share of employment: | 8.9% |
| Mature age share of employment: | 13.0% |

Professional, Scientific and Technical Services



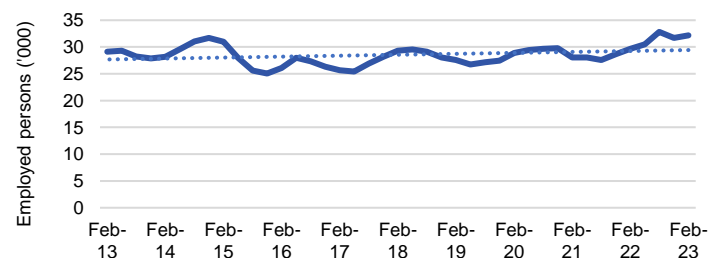
| | |
|---------------------------------|--------|
| Number employed (Feb-23): | 45,000 |
| 1 year employment change: | 7.7% |
| 5 year employment change: | 37.1% |
| 10 year employment change: | 59.2% |
| Youth share of employment: | 6.6% |
| Mature age share of employment: | 9.6% |

Education and Training



| | |
|---------------------------------|--------|
| Number employed (Feb-23): | 32,200 |
| 1 year employment change: | 15.1% |
| 5 year employment change: | 7.1% |
| 10 year employment change: | 20.2% |
| Youth share of employment: | 8.0% |
| Mature age share of employment: | 10.2% |

Retail Trade



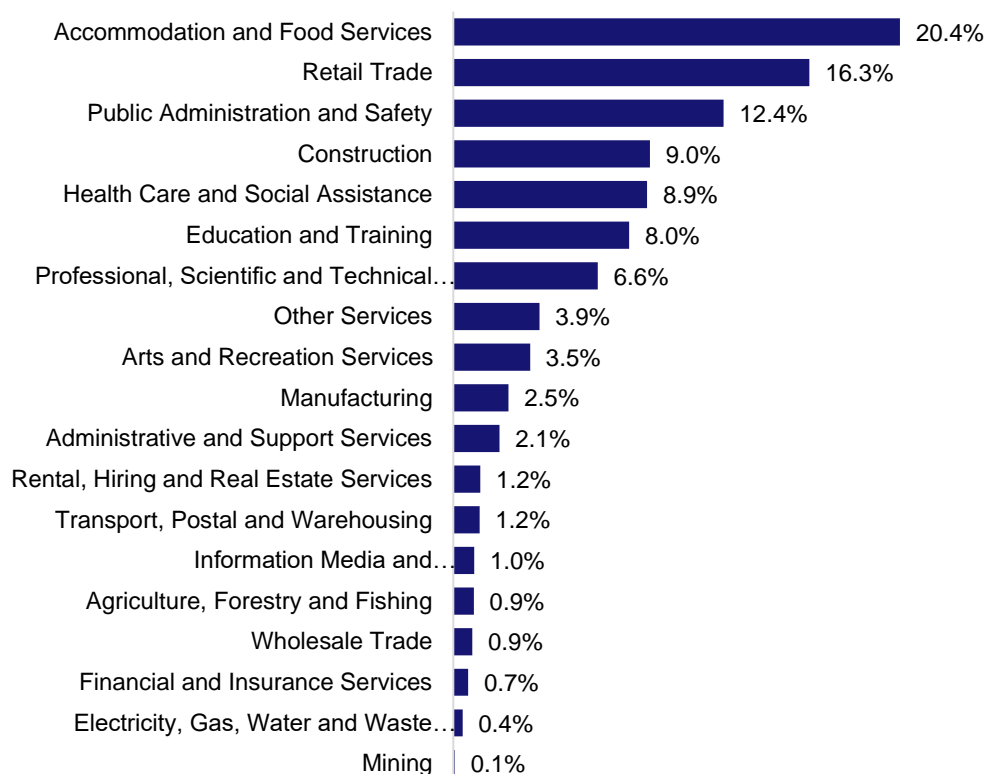
| | |
|---------------------------------|--------|
| Number employed (Feb-23): | 32,200 |
| 1 year employment change: | 8.4% |
| 5 year employment change: | 9.7% |
| 10 year employment change: | 10.4% |
| Youth share of employment: | 16.3% |
| Mature age share of employment: | 5.8% |

Source: ABS Labour Force Survey, Detailed, four quarter averages, February 2023, except youth and mature age data which are from the ABS Census of Population and Housing, 2021.

Note: In each chart, the solid line is the level of employment and the dotted line is a simple linear trend line for the 10 year period.

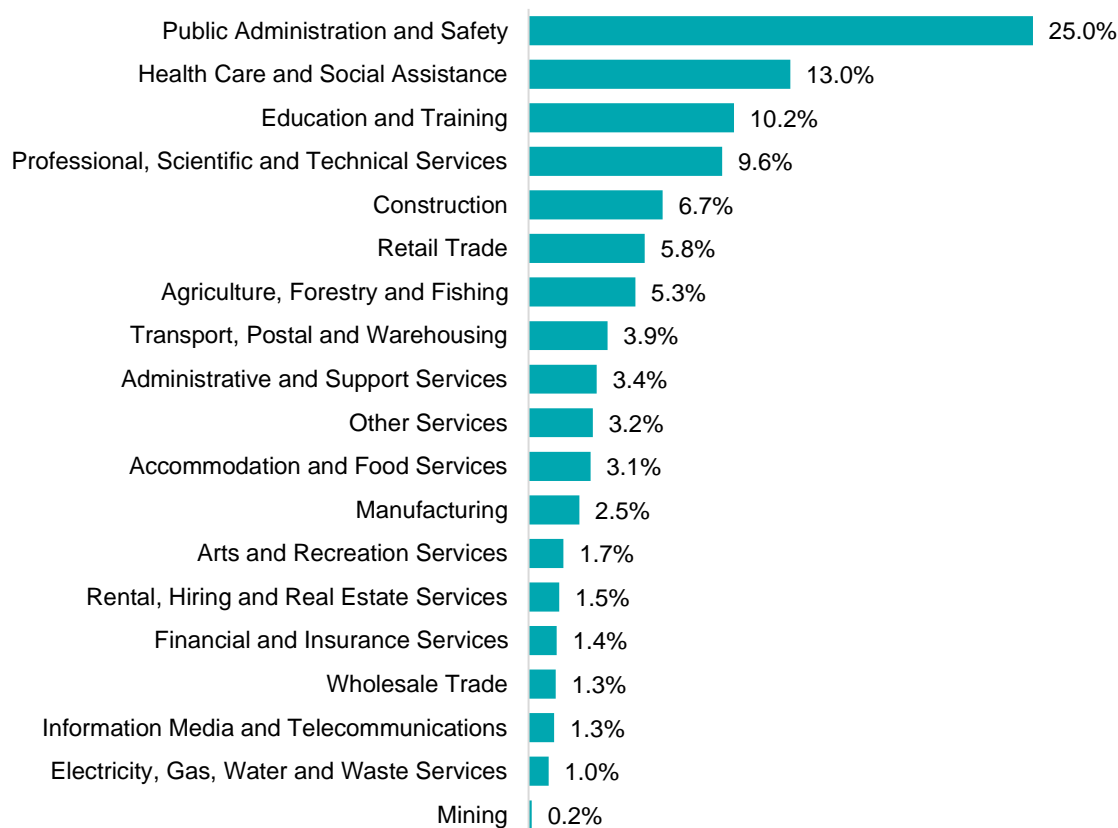
Employment characteristics by Industry

Which industries are youth (aged 15-24) employed in?



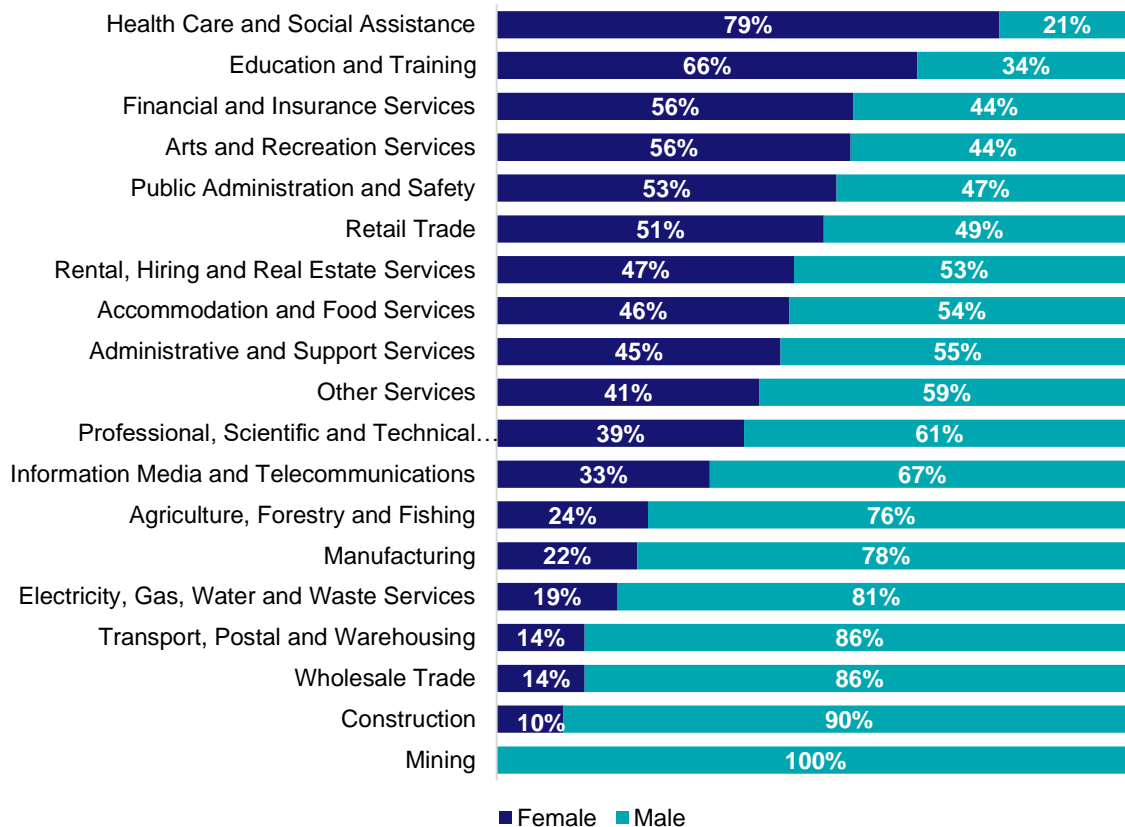
Source: ABS Census of Population and Housing, 2021.

Which industries are mature age persons (aged 55+) employed in?



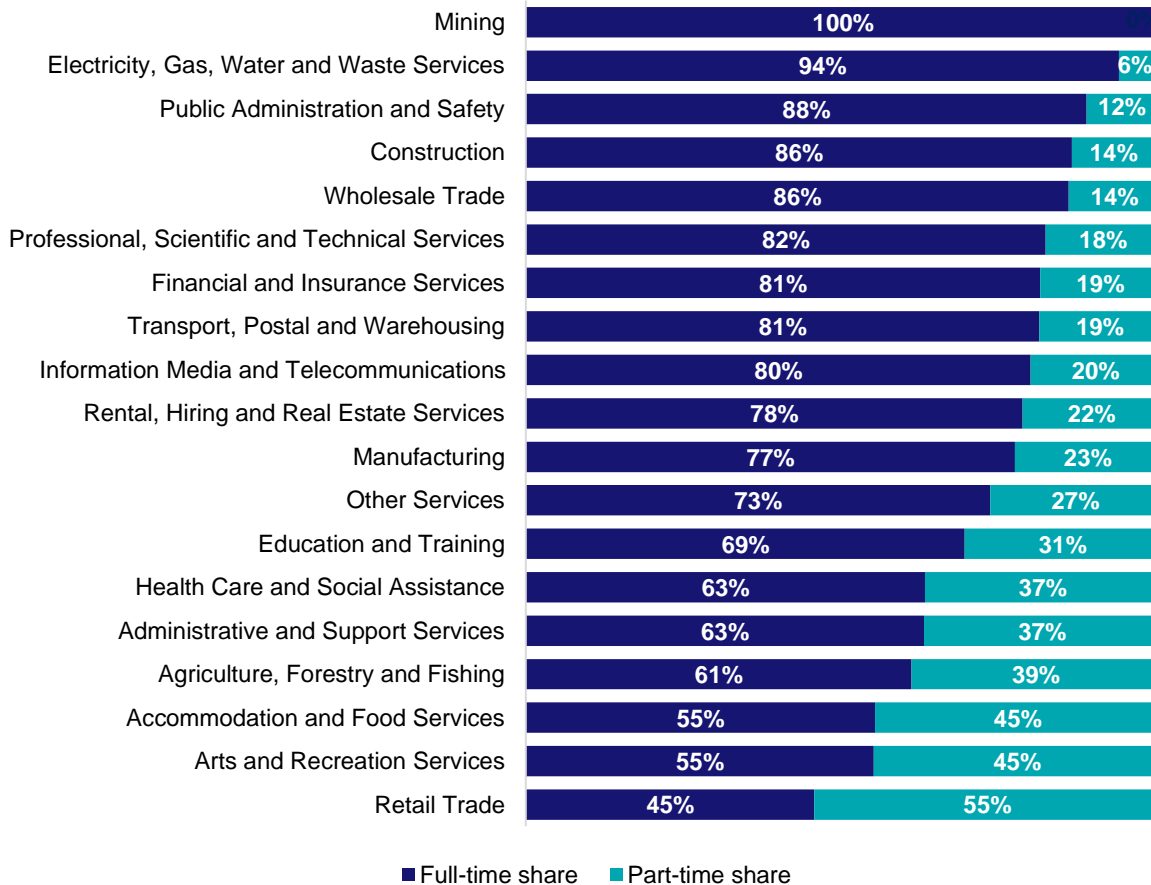
Source: ABS Census of Population and Housing, 2021. Note: SA2 level Census data have been aggregated to the Employment Region level.

Gender share by industry



Source: ABS Labour Force Survey, Detailed, four quarter averages, February 2023.

Full-time and part-time employment status by industry



Source: ABS Labour Force Survey, Detailed, four quarter averages, February 2023.

Appendix

Employment by industry, Capital Region, February 2023

| Industry (in order of size) | Share of employment in the region Feb-23 (%) | Employed ('000) | | | 1 year change | | 5 year change | | Full-time share % | Part-time share % | Median age * |
|---|--|-----------------|--------------|--------------|---------------|------------|---------------|-------------|-------------------|-------------------|--------------|
| | | Feb-23 | Feb-22 | Feb-18 | ('000) | % | ('000) | % | | | |
| Public Administration and Safety | 23.7 | 90.6 | 84.0 | 73.7 | 6.6 | 7.8 | 16.9 | 22.9 | 88.4 | 11.6 | 41 |
| Health Care and Social Assistance | 12.8 | 49.1 | 50.0 | 42.4 | -0.9 | -1.8 | 6.7 | 15.8 | 62.9 | 37.1 | 39 |
| Professional, Scientific and Technical Services | 11.8 | 45.0 | 41.8 | 32.8 | 3.2 | 7.7 | 12.2 | 37.1 | 82.0 | 18.0 | 39 |
| Education and Training | 8.4 | 32.2 | 28.0 | 30.1 | 4.2 | 15.1 | 2.1 | 7.1 | 69.2 | 30.8 | 40 |
| Retail Trade | 8.4 | 32.2 | 29.7 | 29.3 | 2.5 | 8.4 | 2.8 | 9.7 | 45.5 | 54.5 | 29 |
| Construction | 7.5 | 28.7 | 29.7 | 27.7 | -1.0 | -3.2 | 1.0 | 3.6 | 86.1 | 13.9 | 36 |
| Accommodation and Food Services | 6.7 | 25.5 | 22.6 | 30.0 | 2.8 | 12.5 | -4.5 | -15.0 | 55.1 | 44.9 | 24 |
| Other Services | 3.5 | 13.5 | 13.7 | 12.3 | -0.2 | -1.8 | 1.2 | 9.7 | 73.2 | 26.8 | 36 |
| Manufacturing | 3.3 | 12.8 | 10.1 | 12.4 | 2.7 | 26.7 | 0.4 | 2.8 | 77.1 | 22.9 | 38 |
| Administrative and Support Services | 3.0 | 11.4 | 8.8 | 8.3 | 2.7 | 30.2 | 3.1 | 37.7 | 62.8 | 37.2 | 39 |
| Transport, Postal and Warehousing | 2.4 | 9.3 | 8.6 | 9.1 | 0.7 | 8.0 | 0.2 | 1.8 | 81.0 | 19.0 | 42 |
| Arts and Recreation Services | 1.7 | 6.5 | 7.3 | 7.0 | -0.8 | -11.0 | -0.5 | -7.8 | 54.9 | 45.1 | 30 |
| Financial and Insurance Services | 1.5 | 5.6 | 4.2 | 4.4 | 1.3 | 31.0 | 1.2 | 27.4 | 81.1 | 18.9 | 38 |
| Information Media and Telecommunications | 1.3 | 5.0 | 5.1 | 5.4 | -0.1 | -2.1 | -0.4 | -7.8 | 79.6 | 20.4 | 38 |
| Agriculture, Forestry and Fishing | 1.1 | 4.1 | 6.1 | 7.3 | -2.0 | -33.3 | -3.2 | -44.3 | 60.8 | 39.2 | 56 |
| Rental, Hiring and Real Estate Services | 1.0 | 4.0 | 3.7 | 4.0 | 0.3 | 8.4 | 0.0 | -0.4 | 78.3 | 21.7 | 36 |
| Wholesale Trade | 0.9 | 3.6 | 3.4 | 5.1 | 0.2 | 4.7 | -1.6 | -31.0 | 85.6 | 14.4 | 42 |
| Electricity, Gas, Water and Waste Services | 0.8 | 2.9 | 2.2 | 3.8 | 0.7 | 30.6 | -0.9 | -23.1 | 93.5 | 6.5 | 40 |
| Mining | 0.2 | 0.7 | 0.3 | 0.9 | 0.4 | 110.3 | -0.2 | -25.3 | 100.0 | 0.0 | 39 |
| All industries | 100.0 | 382.4 | 359.3 | 346.1 | 23.1 | 6.4 | 36.3 | 10.5 | 73.8 | 26.2 | 38 |

Source: ABS Labour Force Survey, Detailed, four quarter averages, February 2023. *Median age is from the ABS Census of Population and Housing, 2021. Median age has been derived using aggregated SA2s for the Employment Region.

Note: Small cells should be viewed with caution due to small sample sizes and regional volatility.