



ABS Labour Force Results – October 2022

The data in this summary are sourced from ABS, Labour Force, Australia, October 2022 and are in seasonally adjusted terms (unless stated otherwise). Note that changes in the tables are calculated from more detailed data and may not match changes calculated manually from the figures presented in the text.

Table 1: Key national labour market statistics

	Oct-22	Sep-22	Change over the month	Mar-20	Change since Mar-20	Oct-21	Change over the year
Total employment ('000)	13,617.9	13,585.7	32.2	12,995.0	623.0 (4.8%)	12,855.9	762.0 (5.9%)
Full-time employment ('000)	9,525.9	9,478.7	47.1	8,873.2	652.7 (7.4%)	8,949.8	576.1 (6.4%)
Part-time employment ('000)	4,092.1	4,107.0	-14.9	4,121.8	-29.7 (-0.7%)	3,906.2	185.9 (4.8%)
Total unemployment ('000)	477.6	498.1	-20.6	713.6	-236.1 (-33.1%)	713.8	-236.2 (-33.1%)
Unemployment rate (%)	3.4	3.5	-0.1 pts	5.2	-1.8 pts	5.3	-1.9 pts
Participation rate (%)	66.5	66.5	0.0 pts	65.8	0.7 pts	64.8	1.7 pts
Total underemployment ('000)	836.2	846.3	-10.1	1,200.9	-364.7 (-30.4%)	1,283.4	-447.2 (-34.8%)
Underemployment rate (%)	5.9	6.0	-0.1 pts	8.8	-2.8 pts	9.5	-3.5 pts
Monthly hours worked in all jobs (million hours)	1,897.5	1,854.3	43.2	1,767.5	130.0 (7.4%)	1,730.4	167.1 (9.7%)
Annual employment growth rate (%)	5.9 (1.8 decade avg)	5.4 (1.8 decade avg)	0.6 pts	1.7 (1.8 decade avg)	4.2 pts	0.8 (1.3 decade avg)	5.2 pts
Annual full-time employment growth rate (%)	6.4 (1.7 decade avg)	5.5 (1.7 decade avg)	0.9 pts	1.0 (1.5 decade avg)	5.4 pts	3.6 (1.2 decade avg)	2.9 pts
Annual part-time employment growth rate (%)	4.8 (2.0 decade avg)	5.0 (2.0 decade avg)	-0.2 pts	3.2 (2.3 decade avg)	1.6 pts	-5.1 (1.6 decade avg)	9.9 pts
Female employment ('000)	6,481.8	6,473.5	8.3	6,155.4	326.4 (5.3%)	6,065.3	416.5 (6.9%)
Female full-time employment ('000)	3,708.2	3,692.9	15.3	3,340.6	367.6 (11.0%)	3,429.9	278.3 (8.1%)
Female part-time employment ('000)	2,773.6	2,780.7	-7.1	2,814.8	-41.2 (-1.5%)	2,635.4	138.2 (5.2%)
Female unemployment ('000)	240.1	240.6	-0.5	331.6	-91.5 (-27.6%)	347.3	-107.2 (-30.9%)
Female unemployment rate (%)	3.6	3.6	0.0 pts	5.1	-1.5 pts	5.4	-1.8 pts
Female participation rate (%)	62.3	62.3	0.0 pts	61.1	1.2 pts	60.1	2.2 pts
Female underemployment ('000)	478.5	477.0	1.5	684.2	-205.7 (-30.1%)	648.1	-169.6 (-26.2%)
Female underemployment rate (%)	7.1	7.1	0.0 pts	10.5	-3.4 pts	10.1	-3.0 pts
Male employment ('000)	7,136.1	7,112.2	24.0	6,839.6	296.6 (4.3%)	6,790.7	345.5 (5.1%)
Male full-time employment ('000)	5,817.7	5,785.9	31.8	5,532.6	285.1 (5.2%)	5,519.9	297.8 (5.4%)
Male part-time employment ('000)	1,318.5	1,326.3	-7.8	1,307.0	11.5 (0.9%)	1,270.8	47.7 (3.8%)
Male unemployment ('000)	237.5	257.5	-20.1	382.0	-144.5 (-37.8%)	366.4	-129.0 (-35.2%)
Male unemployment rate (%)	3.2	3.5	-0.3 pts	5.3	-2.1 pts	5.1	-1.9 pts
Male participation rate (%)	70.9	71.0	0.0 pts	70.7	0.3 pts	69.7	1.3 pts
Male underemployment ('000)	357.7	369.4	-11.7	516.7	-159.0 (-30.8%)	635.3	-277.6 (-43.7%)
Male underemployment rate (%)	4.9	5.0	-0.2 pts	7.2	-2.3 pts	8.9	-4.0 pts
Youth employment ('000)	2,043.7	2,045.8	-2.1	1,931.3	112.4 (5.8%)	1,799.4	244.3 (13.6%)
Youth full-time employment ('000)	924.0	935.1	-11.0	843.6	80.5 (9.5%)	822.5	101.5 (12.3%)
Youth part-time employment ('000)	1,118.7	1,102.4	16.3	1,085.7	33.0 (3.0%)	976.4	142.3 (14.6%)
Youth unemployment ('000)	159.9	172.6	-12.7	253.5	-93.6 (-36.9%)	269.6	-109.7 (-40.7%)
Youth unemployment rate (%)	7.3	7.8	-0.5 pts	11.6	-4.3 pts	13.1	-5.8 pts
Youth participation rate (%)	71.1	71.6	-0.5 pts	68.1	3.0 pts	66.7	4.4 pts
Youth underemployment ('000)	301.4	302.5	-1.1	423.1	-121.7 (-28.8%)	353.8	-52.4 (-14.8%)
Youth underemployment rate (%)	13.7	13.7	0.0 pts	19.3	-5.6 pts	17.2	-3.5 pts

OVERVIEW

Seasonally adjusted **employment** increased by 32,200 (or 0.2%) over the month, to a record high of 13,617,900 in October 2022. Employment is now 623,000 (or 4.8%) above the level recorded in March 2020 (the month that Australia recorded its 100th COVID-19 case). **Full-time employment** rose by 47,100 (or 0.5%) in October, to a record high of 9,525,900, while **part-time employment** decreased, by 14,900 (or 0.4%), to 4,092,100.

Hours worked increased by 43.2 million hours (or 2.3%) in October, to 1,897.5 million hours, and is 130.0 million hours (or 7.4%) above the level recorded in March 2020.

The **unemployment rate** decreased by 0.1 percentage points over the month, to 3.4% in October 2022. It has not been lower since 1974.

The **underemployment rate** fell by 0.1 percentage points, to 5.9% in October 2022, and is well below the 8.8% recorded in March 2020.

The **participation rate** was steady over the month, at 66.5% in October 2022, and is well above the 65.8% recorded in March 2020.

EMPLOYMENT

Employment rose by 32,200 (or 0.2%) over the month, to a record high of 13,617,900 in October 2022, and is 623,000 (or 4.8%) above the level recorded in March 2020.

- **Full-time employment** increased by 47,100 (or 0.5%) in October, to a record high of 9,525,900, and is 652,700 (or 7.4%) above the level recorded in March 2020.
- **Part-time employment** fell by 14,900 (or 0.4%) over the month, to 4,092,100 in October 2022, and is now 29,700 (or 0.7%) below the level recorded in March 2020.

Female employment rose by 8,300 (or 0.1%) over the month, to 6,481,800 in October 2022, and is 326,400 (or 5.3%) above the level recorded in March 2020.

Male employment increased by 24,000 (or 0.3%) over the month, to a record high of 7,136,100 in October 2022, and is 296,600 (or 4.3%) above the level recorded in March 2020.

HOURS WORKED

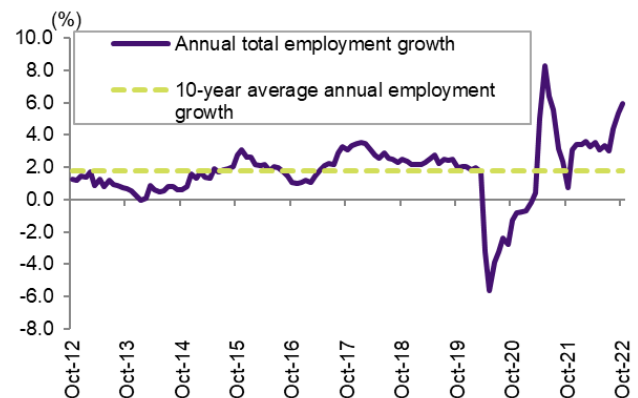
The number of **monthly hours worked in all jobs** rose by 43.2 million hours (or 2.3%) over the month, to a record high of 1,897.5 million hours in October 2022. Since March 2020, the number of monthly hours worked in all jobs has risen by 130.0 million hours (or 7.4%).

The number of people who were employed but worked reduced hours due to 'Own illness, injury or sick leave' fell by 101,300 (or 17.8%) over the month, to 467,100 in October 2022, but remains above the average level recorded in October over the previous 8 years (of 355,900).

In addition, the number of persons employed but working reduced hours due to 'Bad weather or plant

The **employment to population (15 years and over) ratio** rose by 0.1 percentage points over the month, to 64.3% in October 2022, and is well above the 62.4% recorded in March 2020.

Chart 1: Annual employment growth (%)

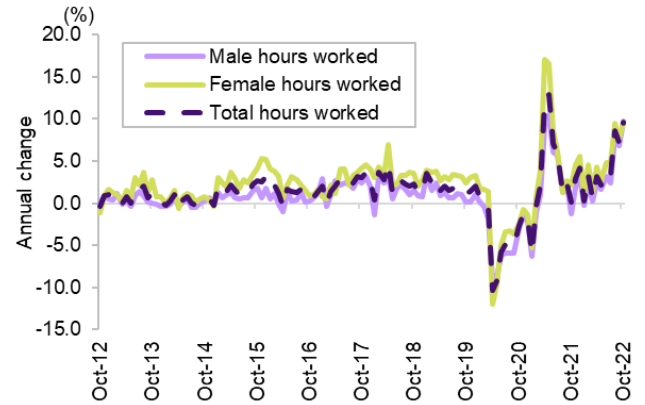


breakdown' increased from 66,500 in September, to 100,300 in October 2022 due to flooding events in New South Wales, Victoria and Tasmania. While the number of people working reduced hours due to 'Annual leave, holidays, flexitime, or long service leave' increased by 810,700 (or 70.1%) over the month, it remains around 10% lower than usually recorded in October.

Male hours worked increased by 24.8 million hours (or 2.3%) in October 2022, to a record high of 1,096.2 million hours, and is 63.9 million hours (or 6.2%) above the level recorded in March 2020

Female hours worked rose by 18.4 million hours (or 2.4%) over the month, to a record high of 801.2 million hours in October, and is 66.1 million hours (or 9.0%) above the level recorded in March 2020.

Chart 2: Annual change in hours worked by gender (%)



UNDEREMPLOYMENT

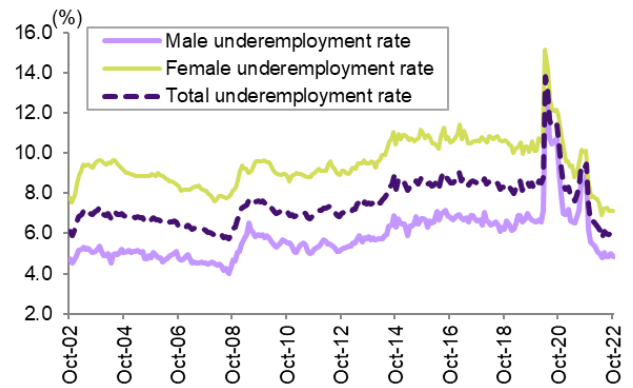
The level of **underemployment** decreased by 10,100 (or 1.2%) over the month, to 836,200 in October 2022, and is 364,700 (or 30.4%) below the level recorded in March 2020.

The **underemployment rate** decreased by 0.1 percentage points over the month, to 5.9% in October 2022, and is well below the 8.8% recorded in March 2020.

The **male underemployment rate** decreased from 5.0% in September 2022, to 4.9% in October 2022, and is well below the 7.2% recorded in March 2020.

The **female underemployment rate** remained steady over the month, at 7.1% in October 2022, and is well below the 10.5% recorded in March 2020.

Chart 3: Underemployment rate by gender (%)



UNEMPLOYMENT

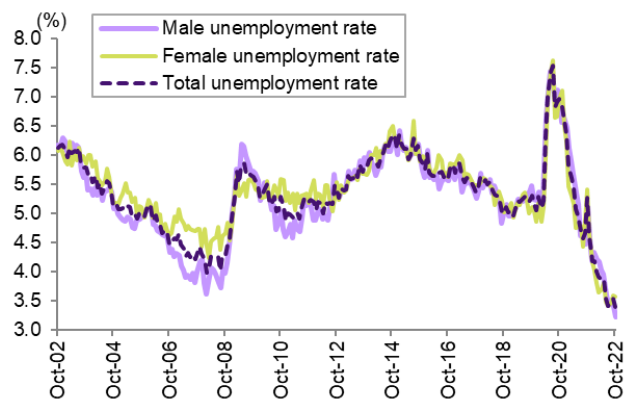
Unemployment fell by 20,600 (or 4.1%) over the month, to 477,600 in October 2022, and is 236,100 (or 33.1%) below the level recorded in March 2020.

The **unemployment rate** fell by 0.1 percentage points over the month, to 3.4% in October 2022, and has not been lower than this since 1974.

The **female unemployment rate** remained steady over the month, at 3.6% in October 2022, and is well below the 5.1% recorded in March 2020.

The **male unemployment rate** fell by 0.3 percentage points over the month, to 3.2% in October 2022, the lowest rate recorded since 1974 and well below the 5.3% recorded in March 2020.

Chart 4: Unemployment rate by gender (%)



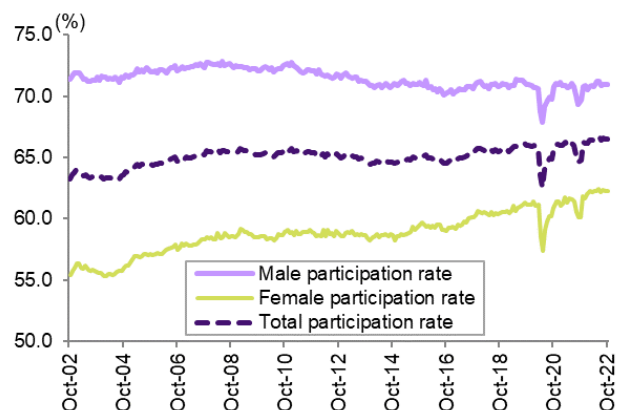
PARTICIPATION

The **labour force participation rate** remained steady over the month, at 66.5% in October 2022, and is above the 65.8% recorded in March 2020.

The **female participation rate** also remained steady over the month, at 62.3% in October 2022, and is above the 61.1% recorded in March 2020.

The **male participation rate** fell marginally over the month, to 70.9% in October 2022, but remains above the 70.7% recorded in March 2020.

Chart 5: Participation rate by gender (%)



YOUTH (15-24 YEARS)

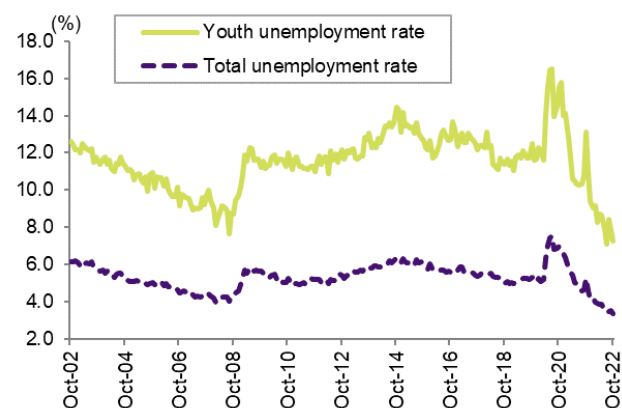
The level of **youth employment** fell by 2,100 (or 0.1%) over the month, to 2,043,700 in October 2022, but remains 112,400 (or 5.8%) above the level recorded in March 2020.

The **youth unemployment rate** decreased by 0.5 percentage points over the month, to 7.3% in October 2022, and is well below the 11.6% recorded in March 2020. The **female youth unemployment rate** decreased to a record low of 6.6% in October 2022.

The **youth participation rate** decreased by 0.5 percentage points over the month, to 71.1% in October 2022, but remains 3.0 percentage points above the rate recorded in March 2020.

The **youth underemployment rate** remained steady over the month, at 13.7% in October 2022, and is well below the 19.3% recorded in March 2020.

Chart 6: Youth and total unemployment rate (%)



STATES AND TERRITORIES

Table 2: Key labour market indicators by state and territory

	Employment ('000)					Unemployment rate (%)			Participation rate (%)		
	Oct-22	Monthly change		Change since Mar-20		Mar-20	Sep-22	Oct-22	Mar-20	Sep-22	Oct-22
New South Wales	4,322.8	34.6	0.8%	194.9	4.7%	4.9	3.3	3.0	65.4	66.0	66.3
Victoria	3,518.2	2.2	0.1%	80.0	2.3%	5.1	3.5	3.6	66.2	66.7	66.8
Queensland	2,769.0	-1.3	0.0%	209.2	8.2%	5.7	3.7	3.3	65.5	66.6	66.2
South Australia	897.1	11.8	1.3%	39.5	4.6%	6.3	4.3	4.1	62.9	62.8	63.4
Western Australia	1,455.4	-11.4	-0.8%	79.3	5.8%	5.6	3.4	3.6	68.1	69.2	68.7
Tasmania	268.8	1.0	0.4%	10.8	4.2%	5.0	4.3	4.0	61.0	61.7	61.6
Northern Territory	137.2	1.5	1.1%	1.2	0.9%	5.1	4.0	3.8	75.9	73.0	73.6
Australian Capital Territory	240.0	4.2	1.8%	0.9	0.4%	3.2	3.1	3.2	72.1	70.9	72.0
Australia	13,617.9	32.2	0.2%	623.0	4.8%	5.2	3.5	3.4	65.8	66.5	66.5

Data are in *seasonally adjusted* terms.

Six of the states and territories recorded an increase in **employment** in October 2022, with New South Wales recording the largest increase (of 34,600 or 0.8%), followed by South Australia (up by 11,800 or 1.3%).

- Employment was at a record high in New South Wales, South Australia and Tasmania in October 2022.

Western Australia recorded the largest decrease in employment over the month (of 11,400 or 0.8%), followed by Queensland (down by 1,300).

Employment is above pre-pandemic levels in all states and territories. Since March 2020, Queensland has recorded the largest increase in employment (up by 209,200 or 8.2%), followed by New South Wales (up by 194,900 or 4.7%).

South Australia recorded the highest **unemployment rate** of all the states and territories in October 2022 (of 4.1%), while New South Wales recorded the lowest rate, of 3.0% in October 2022.

- The unemployment rate in New South Wales (of 3.0%) was the lowest rate recorded since the inception of the monthly series in February 1978, while the unemployment rate in Queensland was the equal lowest rate over this period (of 3.3%).

The Northern Territory recorded the highest **participation rate**, of 73.6% in October 2022, while Tasmania recorded the lowest participation rate, of 61.6%.

The participation rate in New South Wales (of 66.3%) was at a record high in October 2022.

Table 3: Youth unemployment rate by state and territory

Youth unemployment rate (%)					
	Mar-20	Sep-22	Oct-22	Monthly change (% pts)	Change since March 2020 (% pts)
New South Wales	10.5	8.3	7.7	-0.5	-2.7
Victoria	10.7	9.6	9.0	-0.5	-1.6
Queensland	14.5	9.3	8.9	-0.3	-5.6
South Australia	13.8	9.3	9.3	-0.1	-4.5
Western Australia	13.2	8.8	8.5	-0.3	-4.8
Tasmania	12.5	10.2	10.0	-0.2	-2.5
Northern Territory	12.6	8.6	8.7	0.1	-3.8
Australian Capital Territory	8.2	8.1	7.3	-0.8	-0.9
Australia	11.6	7.8	7.3	-0.5	-4.3

Data for the states and territories are 12-month averages of *original* estimates, while the data for Australia are in *seasonally adjusted* terms.